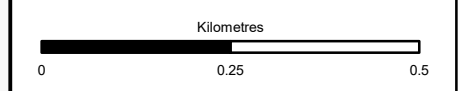


- Proposed Scheme
- Photo Locations
- Nature of Views from existing A9**
- O - Open Views
- I - Intermittent/Restricted Views
- N - No View/Enclosed
- Priority View (Refer to SEA Strategic Landscape Review)**
- Direction of View
- View from Road Assessment (Refer to Section 9.4)**
- Direction of View



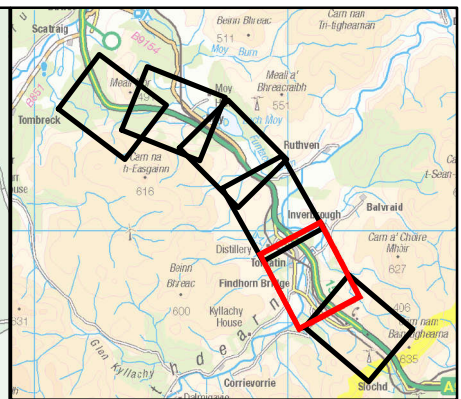
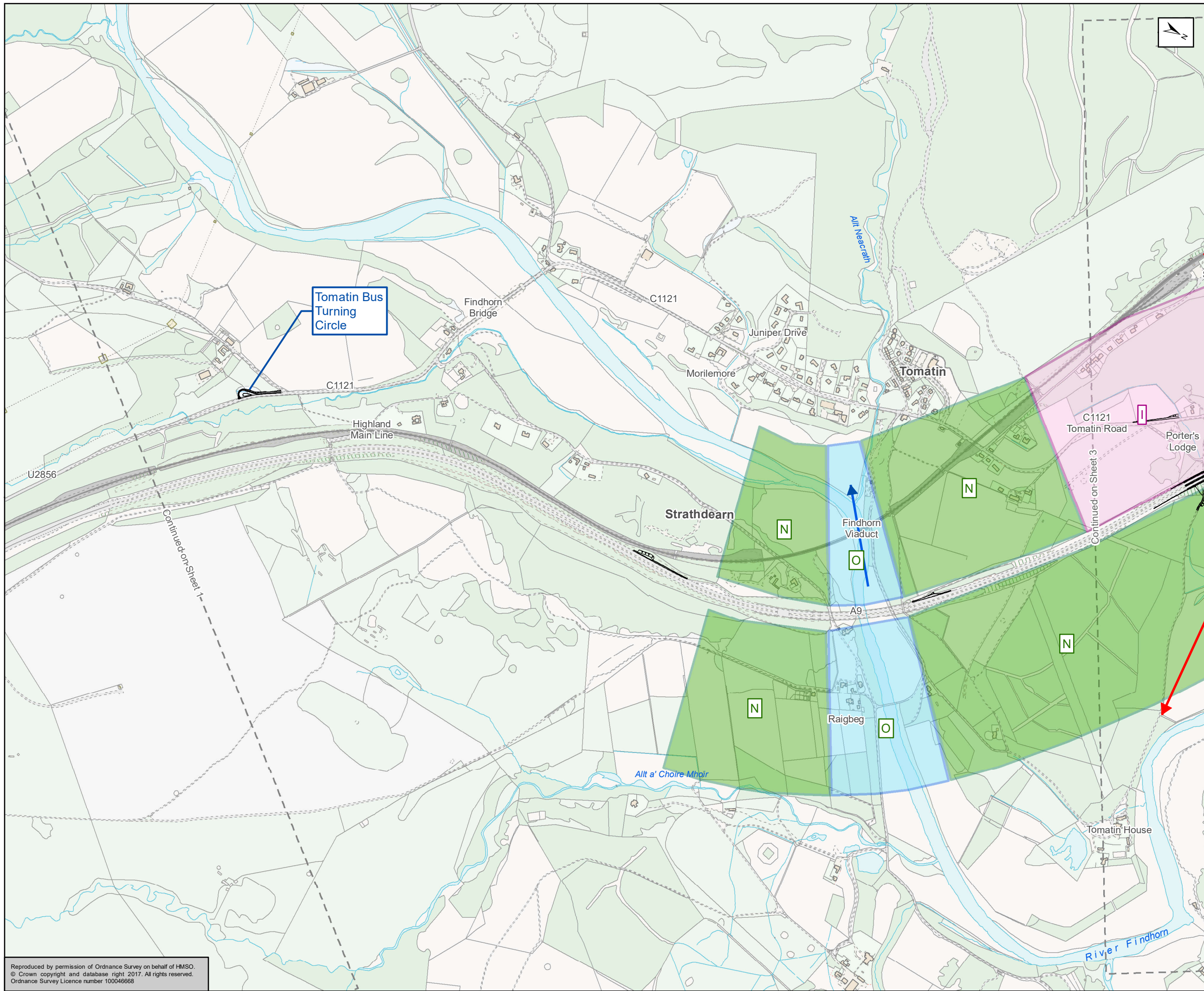
Status	FINAL	Subsidiary	B
--------	-------	------------	---



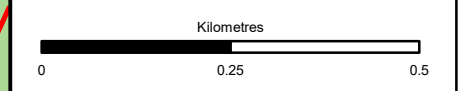
Figure 9.4a
A9 Mainline - View From The Road - Southbound Views
Sheet 1 of 6

Scale	1:10,000	Drawn	HAH	Checked	AW	Approved	RM	Authorised	SB
Document Number	A9P12-AMJ-ELS-Z_ZZZZZ_XX-DR-GI-0019							Revision	P03
Project	Originator	Volume							
Location	Type	Role	Number						

Reproduced by permission of Ordnance Survey on behalf of HMSO.
© Crown copyright and database right 2017. All rights reserved.
Ordnance Survey Licence number 100046668



- Proposed Scheme
- Photo Locations
- Nature of Views from existing A9**
- O - Open Views
- I - Intermittent/Restricted Views
- N - No View/Enclosed
- Priority View (Refer to SEA Strategic Landscape Review)**
- Direction of View
- View from Road Assessment (Refer to Section 9.4)**
- Direction of View



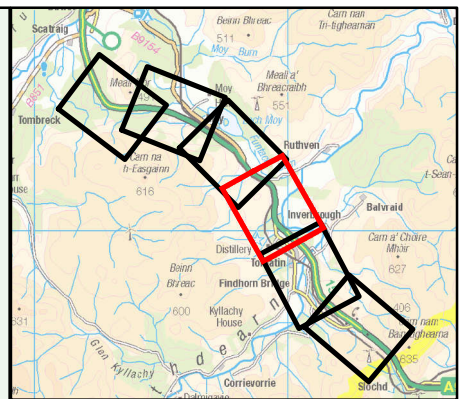
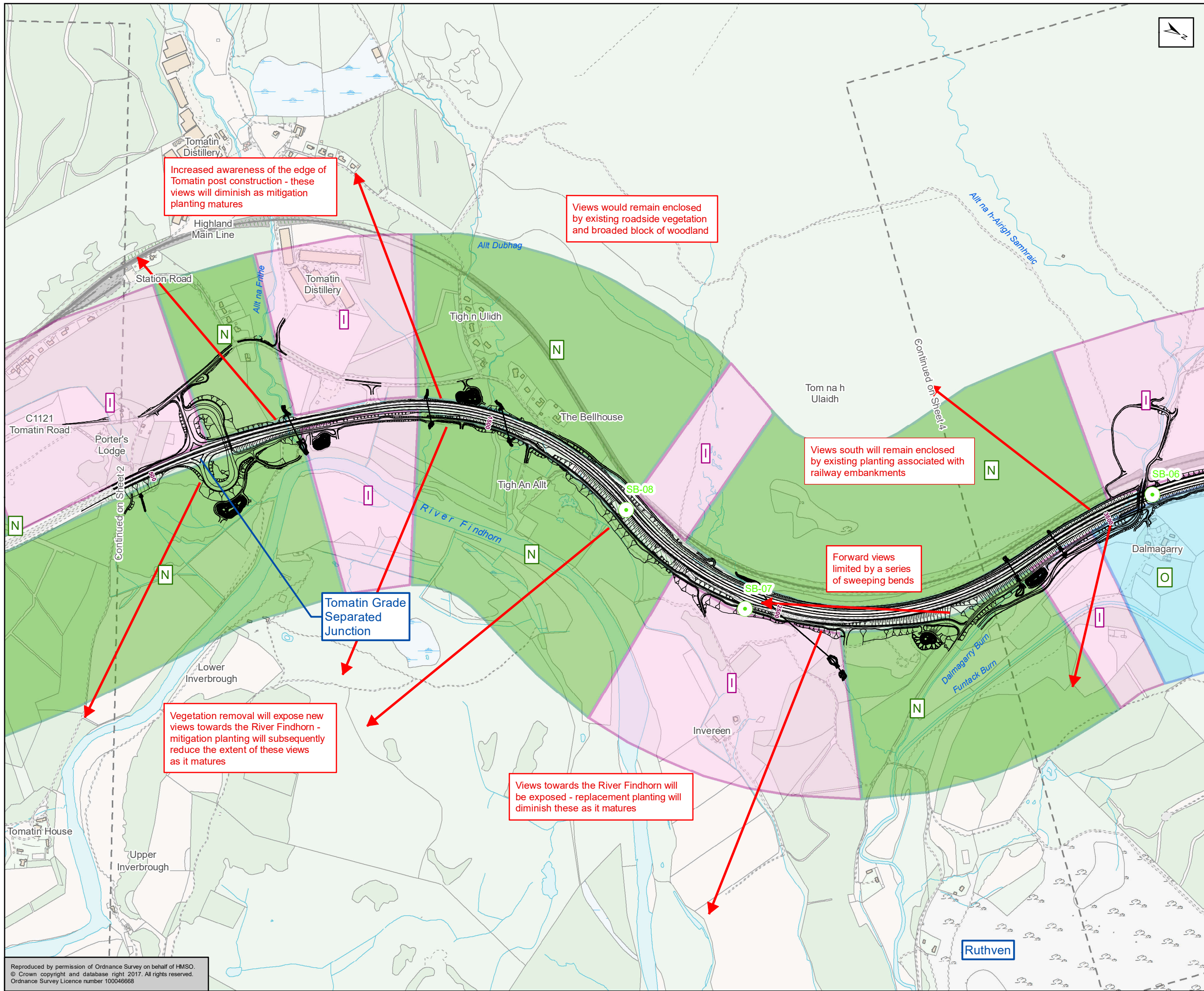
Status	FINAL	Subsidiary	B
--------	-------	------------	---



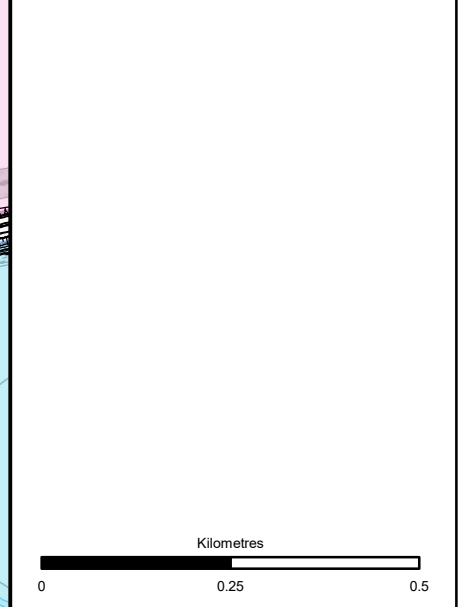
Figure 9.4b
A9 Mainline - View From The Road - Southbound Views
Sheet 2 of 6

Scale	1:10,000	Drawn	HAH	Checked	AW	Approved	RM	Authorised	SB	
Document Number	A9P12-AMJ-ELS-Z_ZZZZZ_XX-DR-GI-0020								Revision	P02
Project	Originator	Volume								
Location	Type	Role	Number							

Reproduced by permission of Ordnance Survey on behalf of HMSO.
© Crown copyright and database right 2017. All rights reserved.
Ordnance Survey Licence number 100046668



- Proposed Scheme
- Photo Locations
- Nature of Views from existing A9**
- O - Open Views
- I - Intermittent/Restricted Views
- N - No View/Enclosed
- Priority View (Refer to SEA Strategic Landscape Review)**
- Direction of View
- View from Road Assessment (Refer to Section 9.4)**
- Direction of View



FINAL B

TRANSPORT SCOTLAND
COMHDHAIL ALBA

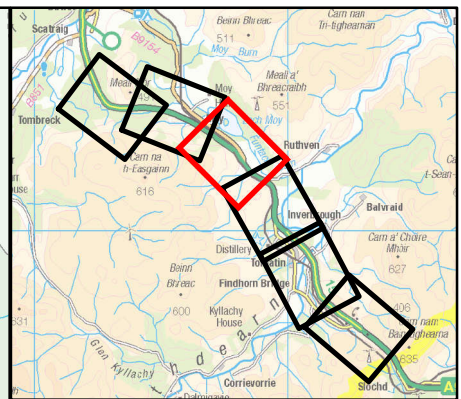
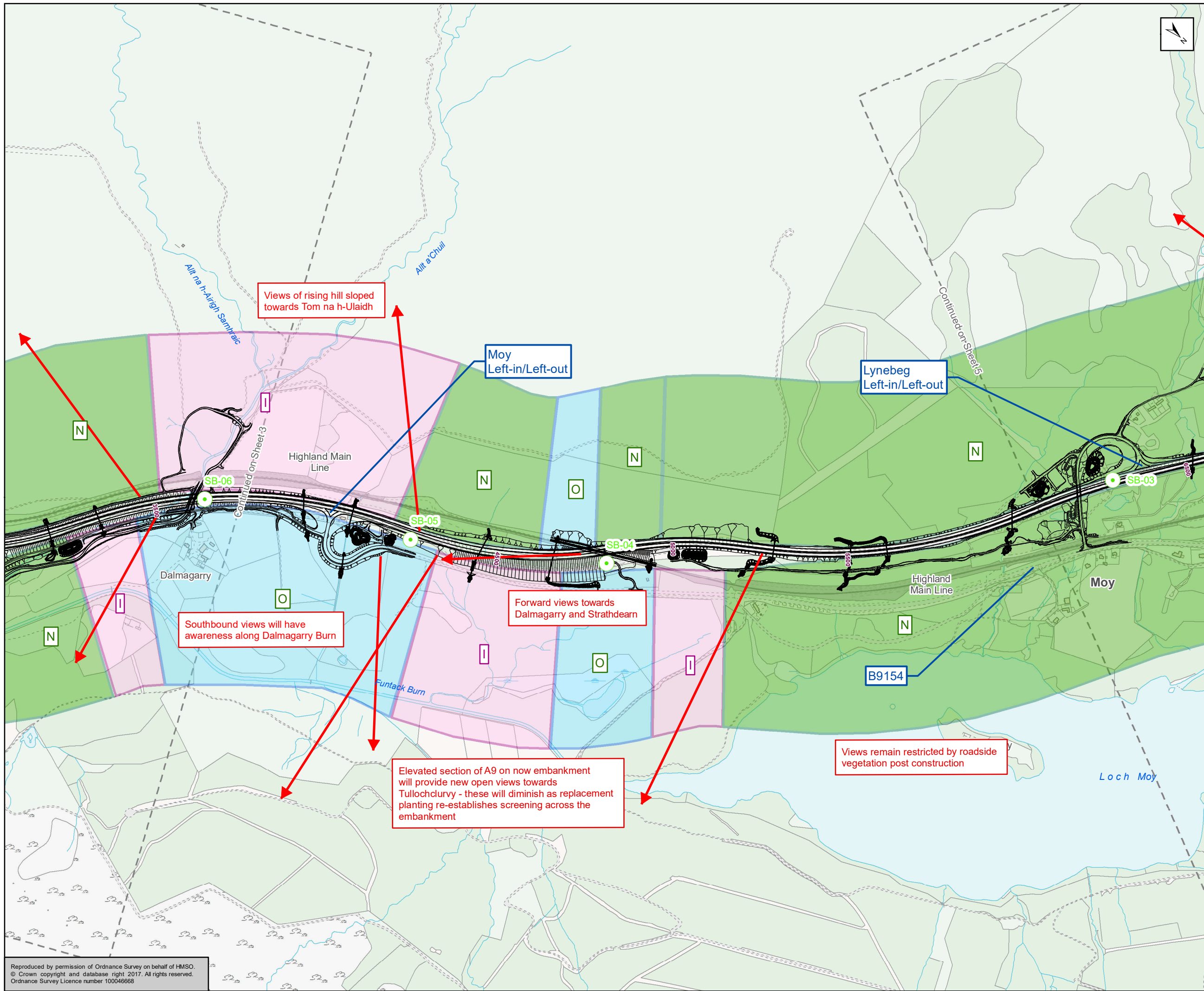
A9
DUALLING
PERTH TO INVERNESS
Tomatin to Moy

ATKINS mouchel

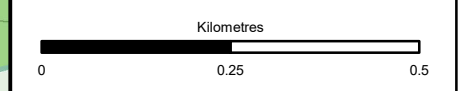
Figure 9.4c
A9 Mainline - View From The Road - Southbound Views
Sheet 3 of 6

Scale	1:10,000	Drawn	HAH	Checked	AW	Approved	RM	Authorised	SB	
Document Number	A9P12-AMJ-ELS-Z_ZZZZZ_XX-DR-GI-0021								Revision	P02
Project	Originator	Volume								
Location	Type	Role	Number							

Reproduced by permission of Ordnance Survey on behalf of HMSO.
© Crown copyright and database right 2017. All rights reserved.
Ordnance Survey Licence number 100046668



- ~ Proposed Scheme
- Photo Locations
- Nature of Views from existing A9**
- O - Open Views
- I - Intermittent/Restricted Views
- N - No View/Enclosed
- Priority View (Refer to SEA Strategic Landscape Review)**
- ➡ Direction of View
- View from Road Assessment (Refer to Section 9.4)**
- ➡ Direction of View



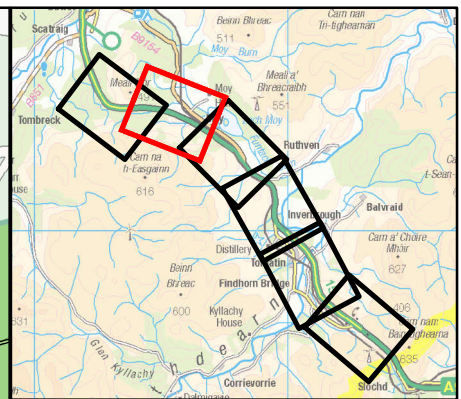
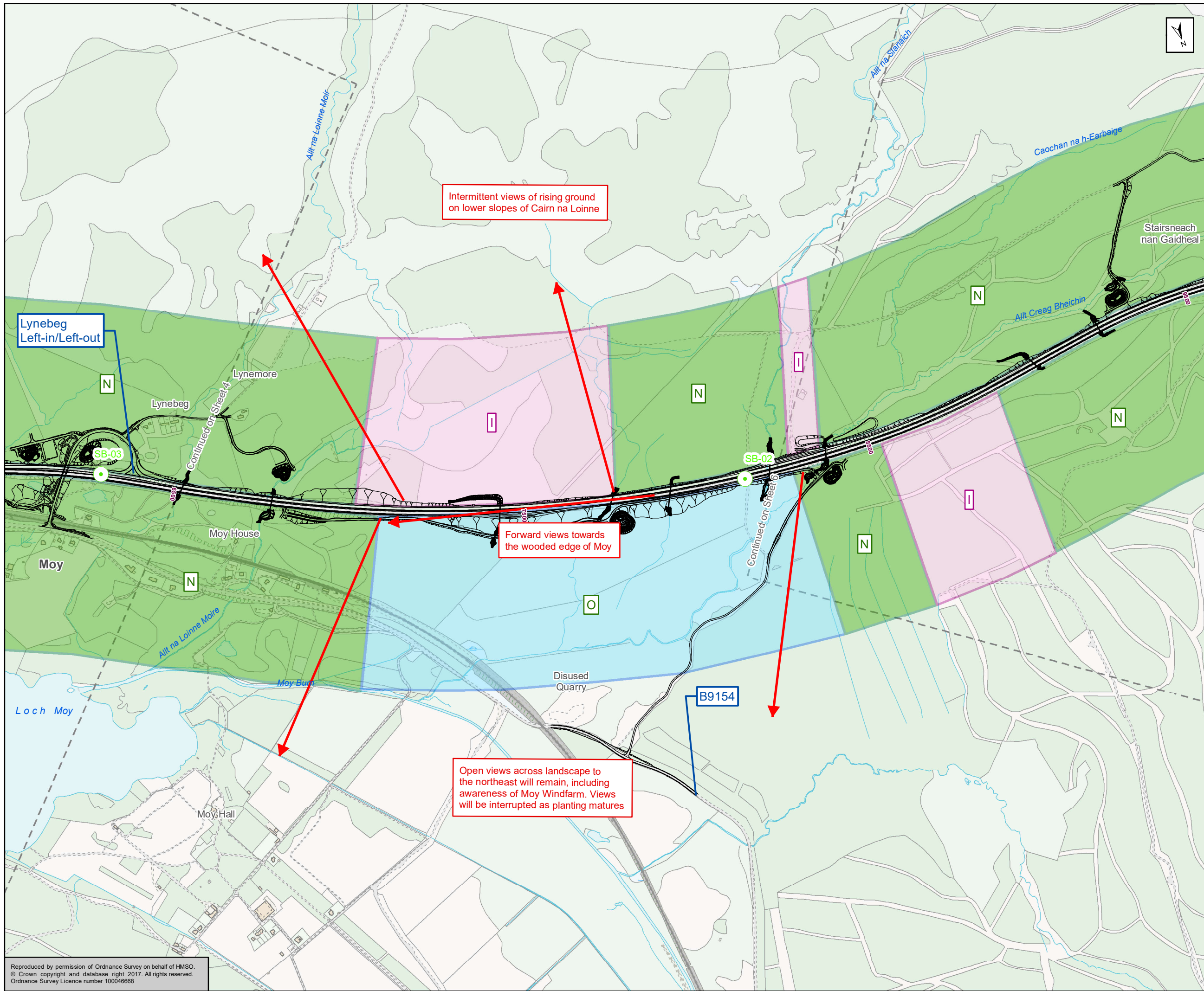
Scale	1:10,000
Status	FINAL
Subsidiary	B



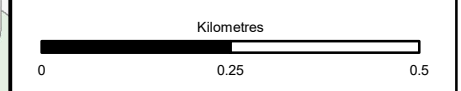
Figure 9.4d
A9 Mainline - View From The Road - Southbound Views
Sheet 4 of 6

Scale	1:10,000	Drawn	H AH	Checked	AW	Approved	RM	Authorised	SB
Document Number	A9P12-AMJ-ELS-Z_ZZZZZ_XX-DR-GI-0022							Revision	P02
Project	Originator	Volume							
Location	Type	Role	Number						

Reproduced by permission of Ordnance Survey on behalf of HMSO.
© Crown copyright and database right 2017. All rights reserved.
Ordnance Survey Licence number 100046668



- Proposed Scheme
- Photo Locations
- Nature of Views from existing A9**
- O - Open Views
- I - Intermittent/Restricted Views
- N - No View/Enclosed
- Priority View (Refer to SEA Strategic Landscape Review)**
- Direction of View
- View from Road Assessment (Refer to Section 9.4)**
- Direction of View



FINAL B

TRANSPORT SCOTLAND
COMHDHAIL ALBA

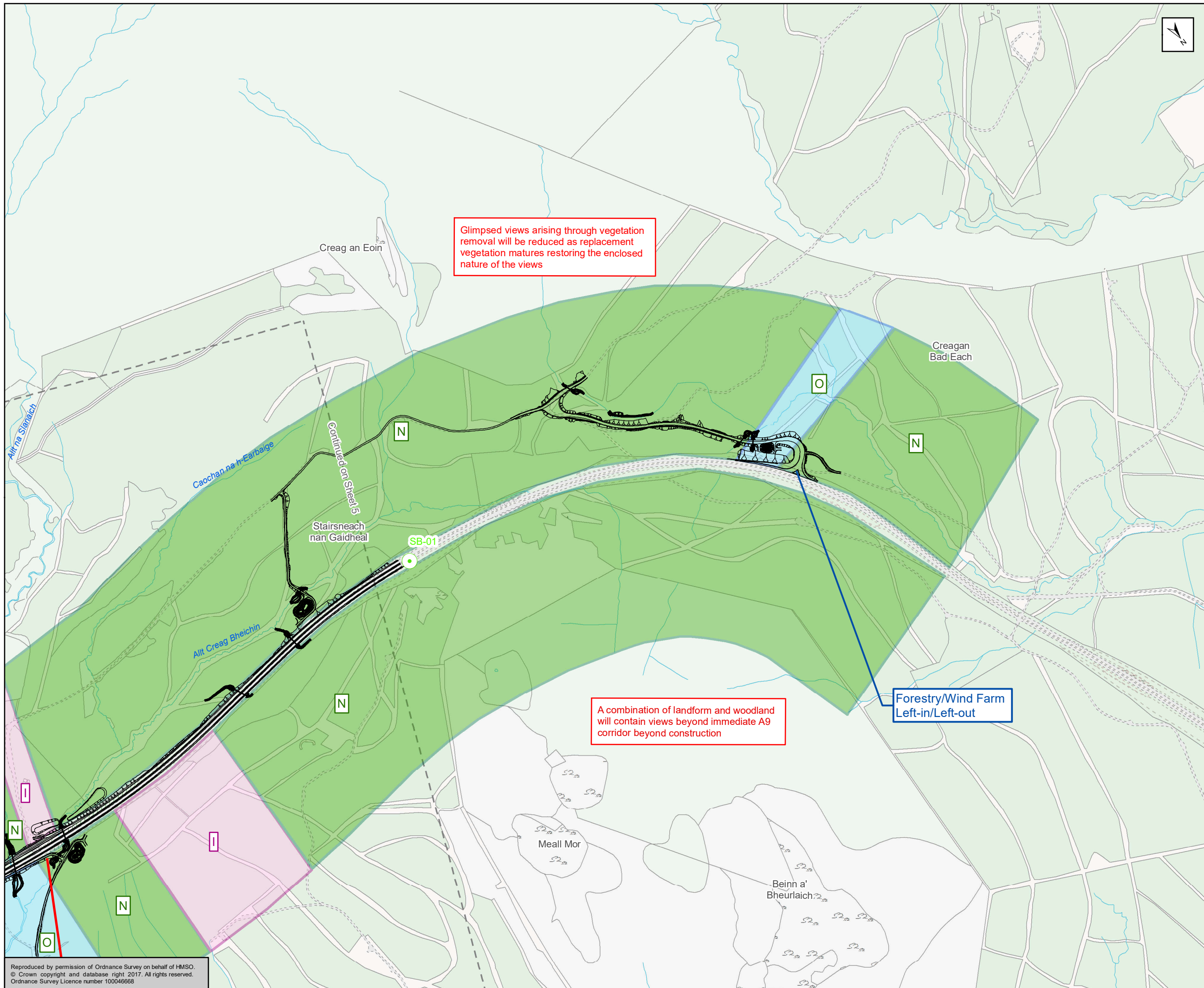
A9
DUALLING
PERTH TO INVERNESS
Tomatin to Moy

ATKINS mouchel

Figure 9.4e
A9 Mainline - View From The Road - Southbound Views
Sheet 5 of 6

Scale	1:10,000	Drawn	HAH	Checked	AW	Approved	RM	Authorised	SB	
Document Number	A9P12-AMJ-ELS-Z_ZZZZZ_XX-DR-GI-0023								Revision	P02
Project	Originator	Volume								
Location	Type	Role	Number							

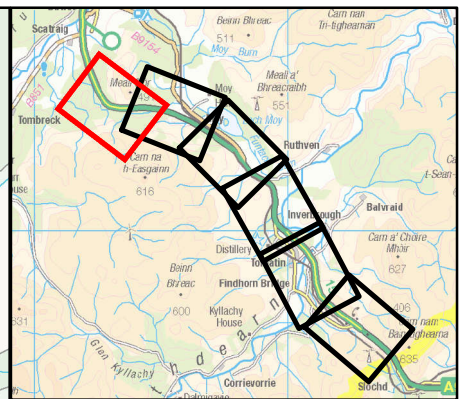
Reproduced by permission of Ordnance Survey on behalf of HMSO.
© Crown copyright and database right 2017. All rights reserved.
Ordnance Survey Licence number 100046668



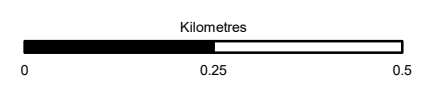
Glimpsed views arising through vegetation removal will be reduced as replacement vegetation matures restoring the enclosed nature of the views

A combination of landform and woodland will contain views beyond immediate A9 corridor beyond construction

Forestry/Wind Farm Left-in/Left-out



- Proposed Scheme
- Photo Locations
- Nature of Views from existing A9**
- O - Open Views
- I - Intermittent/Restricted Views
- N - No View/Enclosed
- Priority View (Refer to SEA Strategic Landscape Review)**
- Direction of View
- View from Road Assessment (Refer to Section 9.4)**
- Direction of View



Status: FINAL Substudy: B

Client: TRANSPORT SCOTLAND COMHDHAIL ALBA



ATKINS mouchel

Figure 9.4f
A9 Mainline - View From The Road - Southbound Views
Sheet 6 of 6

Scale: 1:10,000	Drawn: HAH	Checked: AW	Approved: RM	Authorised: SB
Document Number: A9P12-AMJ-ELS-Z_ZZZZZ_XX-DR-GI-0054	Project: A9P12-AMJ-ELS-Z_ZZZZZ_XX-DR-GI-0054	Originator: A9P12-AMJ-ELS-Z_ZZZZZ_XX-DR-GI-0054	Volume: A9P12-AMJ-ELS-Z_ZZZZZ_XX-DR-GI-0054	Revision: P02
Location:	Type:	Role:	Number:	

Reproduced by permission of Ordnance Survey on behalf of HMSO. © Crown copyright and database right 2017. All rights reserved. Ordnance Survey Licence number 100046668