

Proposed Scheme

250m Study Area

Linear Features

- Fault, inferred, displacement unknown
- Fault, inferred
- Zone of sheared rock, inferred, including protomylonite, mylonite, blastomylonite, ultramylonite
- Margin of contact metamorphic aureole, symbol towards intrusion

Bedrock Geology

- FDHN-DMZD FINDHORN PLUTON - DIORITE AND MONZODIORITE
- FDHN2-GDBI FINDHORN PLUTON, PHASE 2 - GRANODIORITE, BIOTITE
- BBPS-PSMG BEINN BHREAC PSAMMITE FORMATION - PSAMMITE, GNEISSOSE - MICACEOUS.
- BBPS-QZTGN BEINN BHREAC PSAMMITE FORMATION - QUARTZITE, GNEISSOSE
- CGBH-SPELGN CREAG BUIDHE SEMPELITE FORMATION - SEMPELITE, GNEISSOSE
- DALN-PSSC DALRADIAN SUPERGROUP - PSAMMITE, SEMPELITE AND CALCILICATE-ROCK
- DAVA-PSMGN DAVA SUBGROUP - PSAMMITE, GNEISSOSE
- DAVA-SPELGN DAVA SUBGROUP - SEMPELITE, GNEISSOSE

Kilometres

0 0.5 1

Status: FINAL Subtitle: B

Client: **TRANSPORT SCOTLAND**
COMHDHAIL ALBA

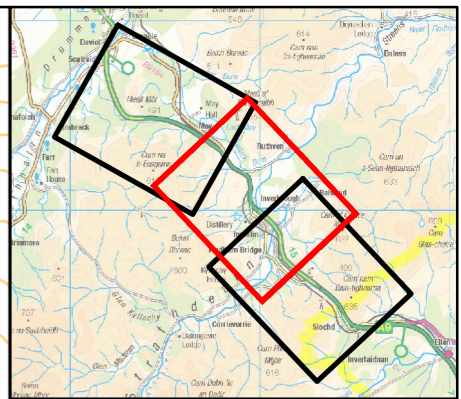
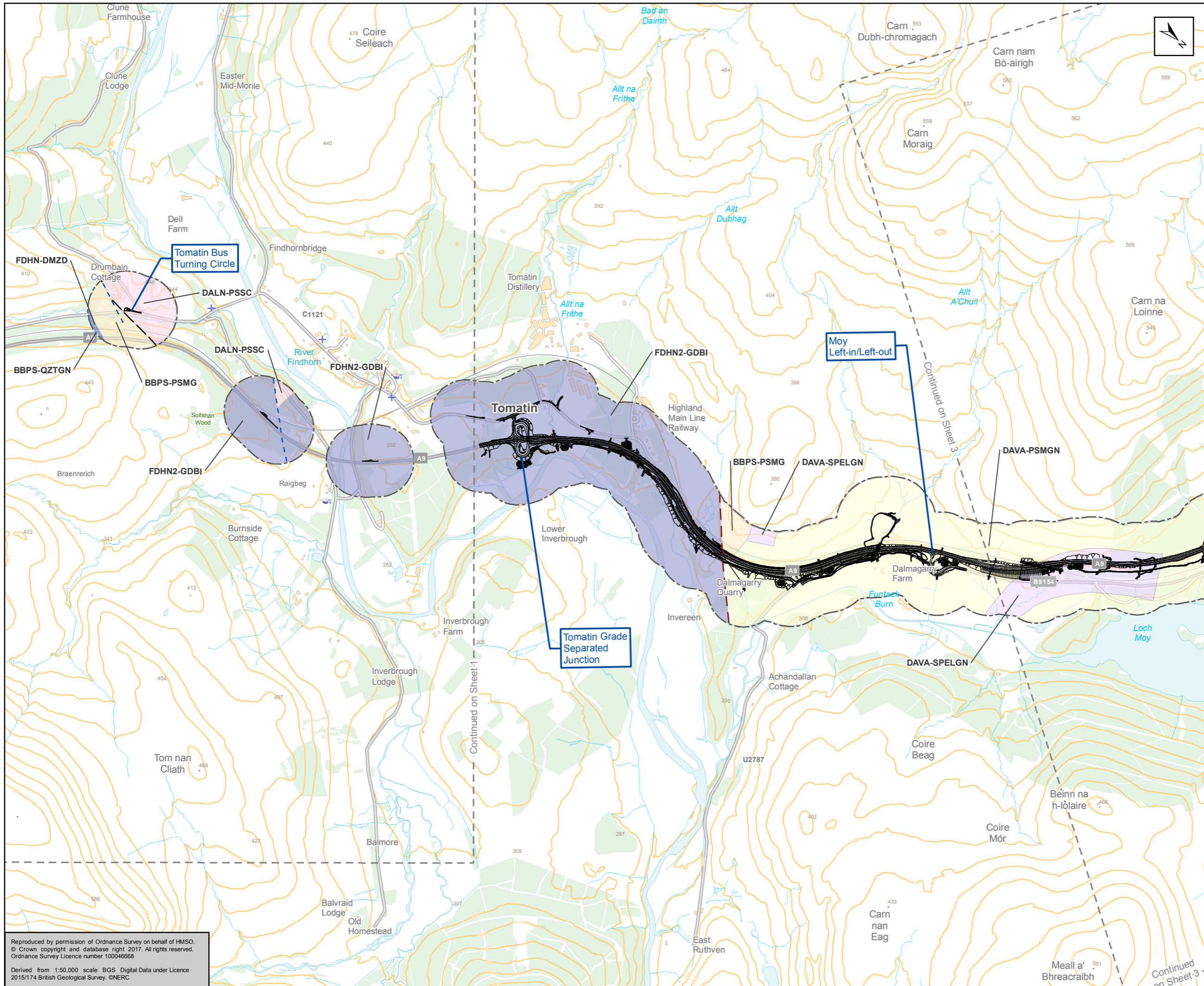
A9
DUALLING
PERTH TO INVERNESS
Tomatin to Moy

ATKINS mouchel

Figure 10.1a
Bedrock Geology
Sheet 1 of 3

Scale	1:25,000	Drawn	MM	Checked	RS	Approved	RM	Authorised	SB	
Document Number	A9P12-AMJ-EGT-Z_ZZZZ_X-DR-GI-0001								Revision	P02
Project	Originator		Volume							
Location	Type	Role	Number							

Reproduced by permission of Ordnance Survey on behalf of HMSO.
© Crown copyright and database right 2017. All rights reserved.
Ordnance Survey Licence number 100046668
Derived from 1:50,000 scale BGS Digital Data under Licence
2015/174 British Geological Survey. ©NERC



Proposed Scheme
 250m Study Area

Linear Features

- Fault, inferred, displacement unknown
- Fault, inferred
- Zone of sheared rock, inferred, including protomylonite, mylonite, blastomylonite, ultramylonite
- Margin of contact metamorphic aureole, symbol towards intrusion

Bedrock Geology

- FDHN-DMZD FINDHORN PLUTON - DIORITE AND MONZODIORITE
- FDHN2-GDBI FINDHORN PLUTON, PHASE 2 - GRANODIORITE, BIOTITE
- MOYG-GNR MOY PLUTON - GRANITIC-ROCK
- BBPS-PSMG BEINN BHREAC PSAMMITE FORMATION - PSAMMITE, GNEISSOSE - MICACEOUS.
- BBPS-QZTGN BEINN BHREAC PSAMMITE FORMATION - QUARTZITE, GNEISSOSE
- CGBH-SPELGN CREAG BUIDHE SEMPELITE FORMATION - SEMPELITE, GNEISSOSE
- DALN-PSSC DALRADIAN SUPERGROUP - PSAMMITE, SEMPELITE AND CALCILICATE-ROCK
- DAVA-PSMGN DAVA SUBGROUP - PSAMMITE, GNEISSOSE
- DAVA-SPELGN DAVA SUBGROUP - SEMPELITE, GNEISSOSE

Kilometres
 0 0.5 1

Status: FINAL Subtitle: B

Client: TRANSPORT SCOTLAND COMHDHAIL ALBA

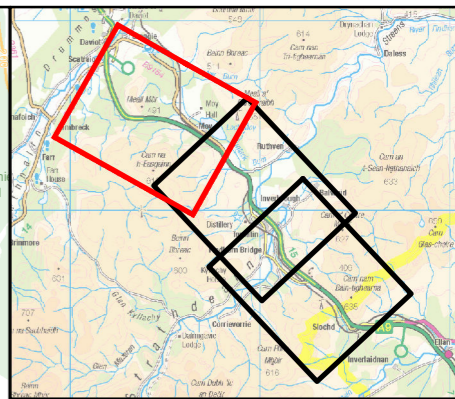
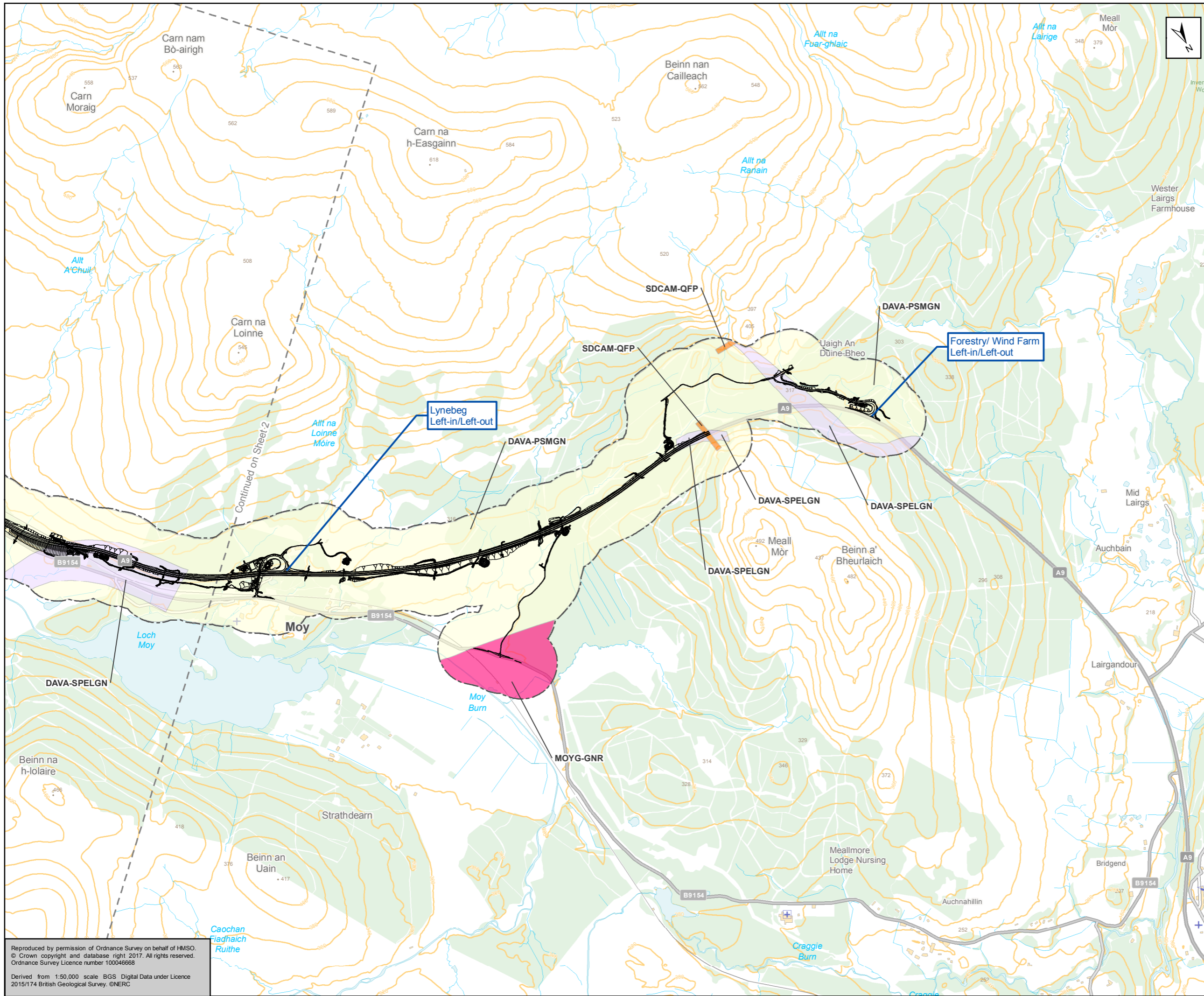
A9 DUALING PERTH TO INVERNESS Tomatin to Moy

ATKINS mouchel

Figure 10.1b
 Bedrock Geology
 Sheet 2 of 3

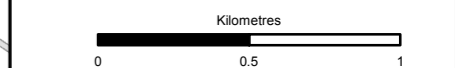
Scale: 1:25,000	Drawn: MM	Checked: RS	Approved: RM	Authorised: SB
Document Number: A9P12-AMJ-EGT-Z_ZZZZ_XX-DR-GI-0031	Project: A9P12-AMJ-EGT-Z_ZZZZ_XX-DR-GI-0031	Originator: [blank]	Volume: [blank]	Revision: P02
Location: [blank]	Type: [blank]	Role: [blank]	Number: [blank]	[blank]

Reproduced by permission of Ordnance Survey on behalf of HMSO. © Crown copyright and database right 2017. All rights reserved. Ordnance Survey Licence number 100046668
 Derived from 1:50,000 scale BGS Digital Data under Licence 2015/174 British Geological Survey. ©NERC



- Proposed Scheme
- 250m Study Area
- Linear Features**
- Fault, inferred, displacement unknown
 - Fault, inferred
 - Zone of sheared rock, inferred, including protomylonite, mylonite, blastomylonite, ultramylonite
 - Margin of contact metamorphic aureole, symbol towards intrusion

- Bedrock Geology**
- FDHN2-GDBI FINDHORN PLUTON, PHASE 2 - GRANODIORITE, BIOTITE
 - SDCAM-QFP SCOTTISH HIGHLAND SILURO-DEVONIAN CALC-ALKALINE MINOR INTRUSION SUITE (OTHER THAN DYKES) - QUARTZ - FELDSPAR - PORPHYRY
 - MOYG-GNR MOY PLUTON - GRANITIC-ROCK
 - BBPS-PSMG BEINN BHREAC PSAMMITE FORMATION - PSAMMITE, GNEISSOSE - MICACEOUS.
 - DAVA-PSMGN DAVA SUBGROUP - PSAMMITE, GNEISSOSE
 - DAVA-SPELGN DAVA SUBGROUP - SEMIPELITE, GNEISSOSE



Status: FINAL Subtitle: B

Client: TRANSPORT SCOTLAND COMHDHAIL ALBA

A9 DUALLING
PERTH TO INVERNESS
Tomatin to Moy

ATKINS mouchel

Figure 10.1c
Bedrock Geology
Sheet 3 of 3

Scale	1:25,000	Draw	MM	Checked	RS	Approved	RM	Authorised	SB
Document Number	Project		Originator		Volume		Revision		
A9P12-AMJ-EGT-Z_ZZZZZ_XX-DR-GI-0085	A9P12-AMJ-EGT-Z_ZZZZZ_XX-DR-GI-0085		A9P12-AMJ-EGT-Z_ZZZZZ_XX-DR-GI-0085		A9P12-AMJ-EGT-Z_ZZZZZ_XX-DR-GI-0085		P02		
Location	Type	Role	Number						

Reproduced by permission of Ordnance Survey on behalf of HMSO. © Crown copyright and database right 2017. All rights reserved. Ordnance Survey Licence number 100046668
Derived from 1:50,000 scale BGS Digital Data under Licence 2015/174 British Geological Survey. ©NERC