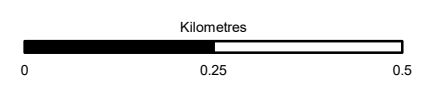


- Proposed Scheme
- Viewpoints with Photomontages**
- 120° Viewpoint with Photmontage
- 90° Viewpoint with Photmontage
- Viewpoints**
- 120° Viewpoint
- 90° Viewpoint
- Visibility**
- HGVs Visible
- Carriageway Visible



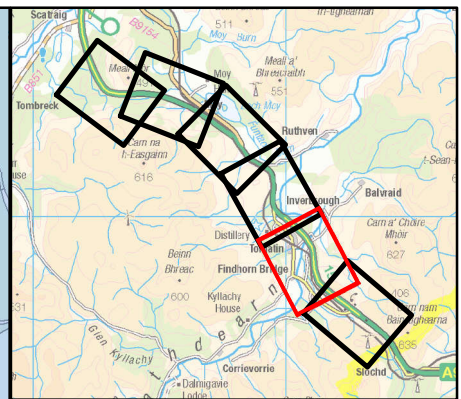
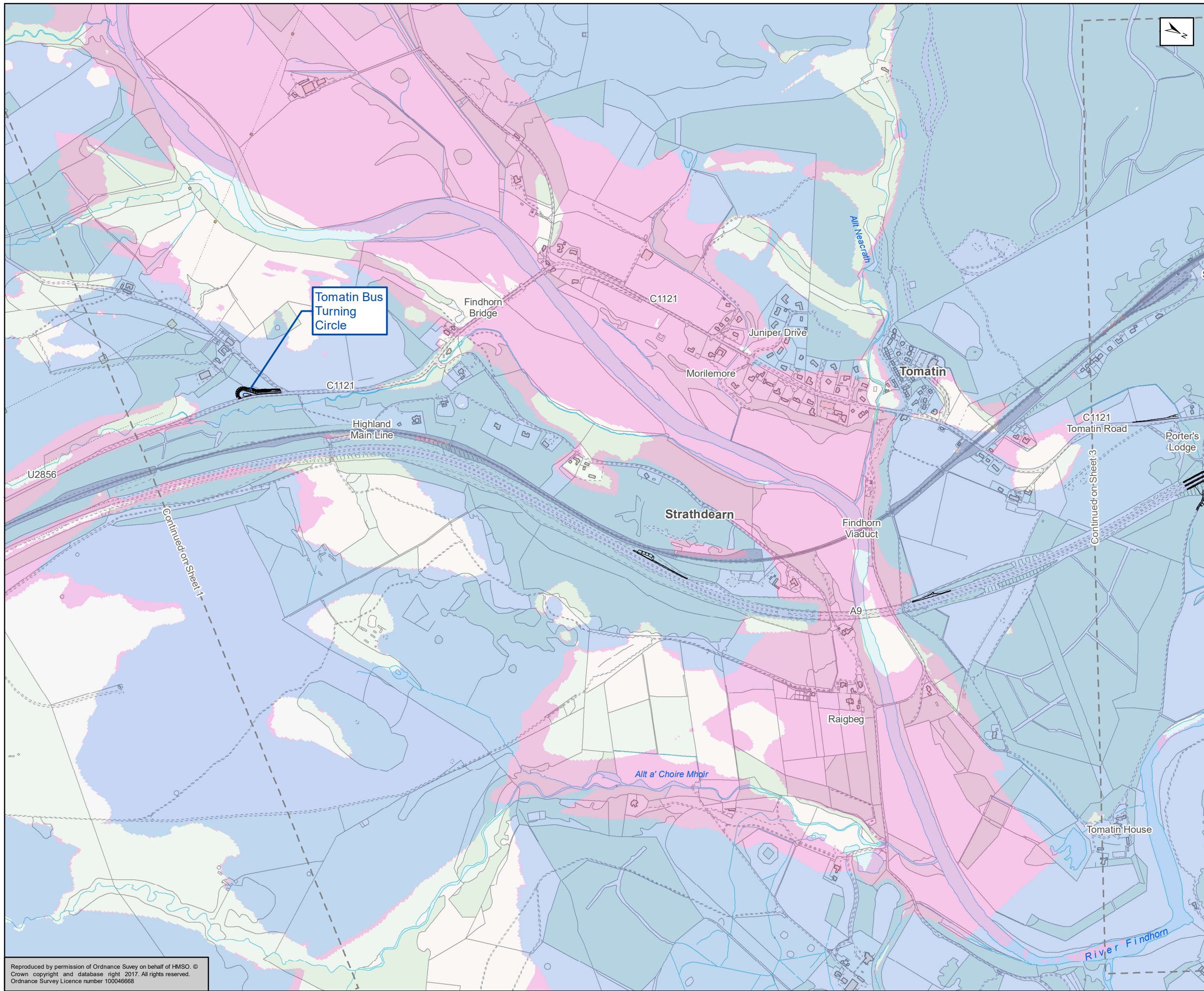
Status: FINAL Substudy: B







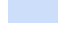


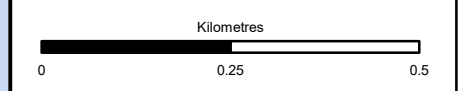
Figure 14.2a
Viewpoint Locations
Sheet 1 of 6

| | | | | | | | | | |
|-----------------|-------------------------------------|-------|--------|---------|----|----------|----|------------|-----|
| Scale | 1:10,000 | Drawn | HAH | Checked | JM | Approved | RM | Authorised | SB |
| Document Number | A9P12-AMJ-ELS-Z_ZZZZZ_XX-DR-GI-0052 | | | | | | | Revision | P03 |
| Location | Type | Role | Number | | | | | | |

Reproduced by permission of Ordnance Survey on behalf of HMSO. © Crown copyright and database right 2017. All rights reserved. Ordnance Survey Licence number 100046668



-  Proposed Scheme
- Viewpoints with Photomontages**
-  120° Viewpoint with Photmontage
-  90° Viewpoint with Photmontage
- Viewpoints**
-  120° Viewpoint
-  90° Viewpoint
- Visibility**
-  HGVs Visible
-  Carriageway Visible



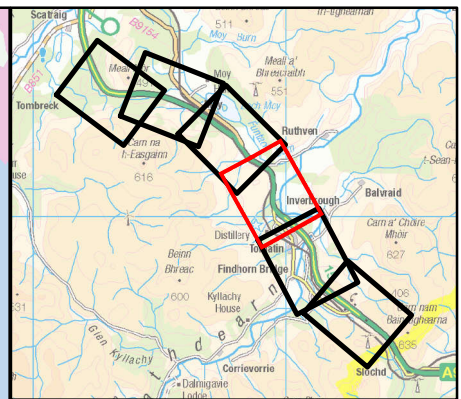
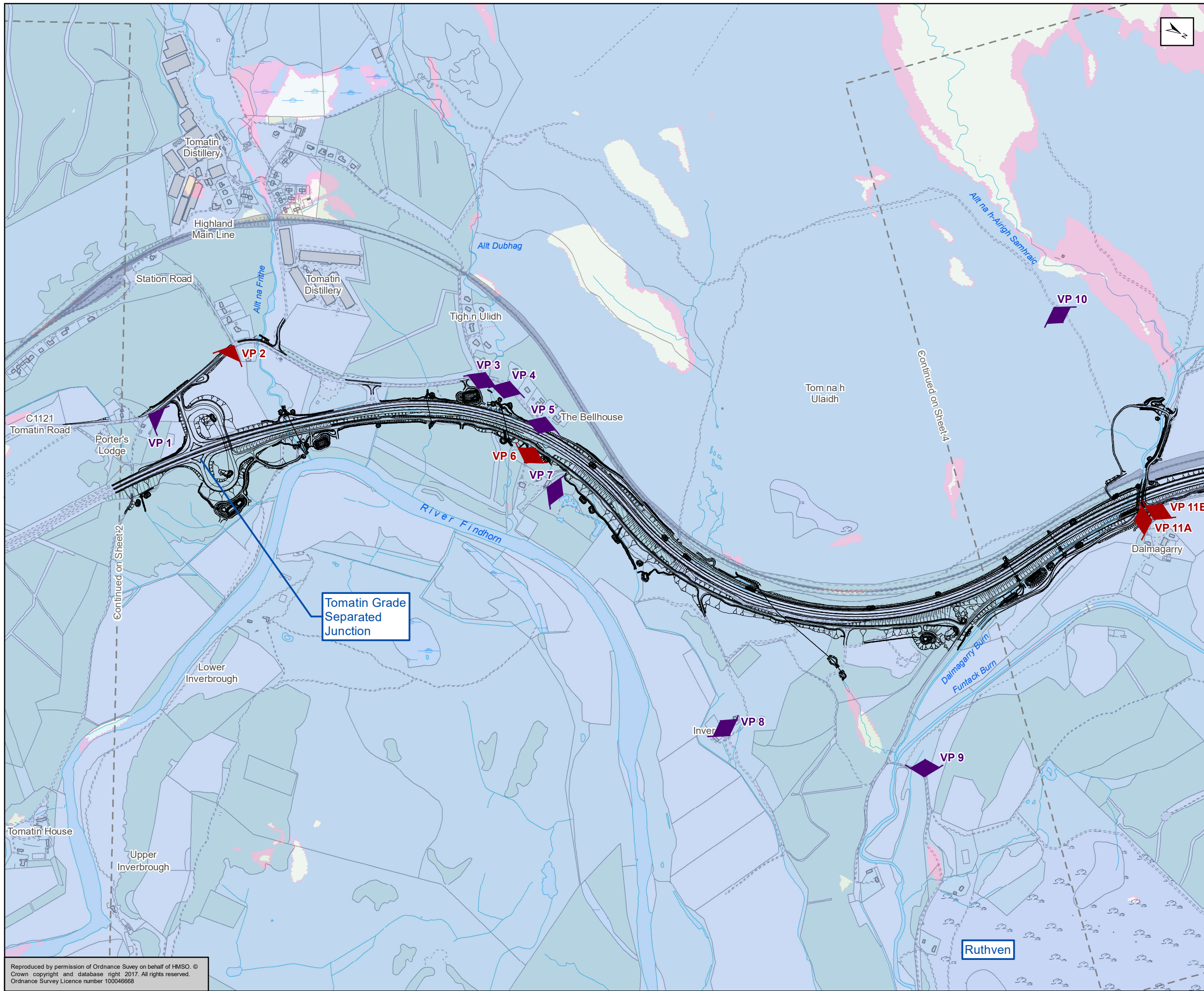
| | | | |
|--------|-------|------------|---|
| Status | FINAL | Subsidiary | B |
|--------|-------|------------|---|



Figure 14.2b
Viewpoint Locations
Sheet 2 of 6

| | | | | | | | | | |
|-----------------|-------------------------------------|--------|--------|---------|----|----------|----|------------|-----|
| Scale | 1:10,000 | Drawn | HAH | Checked | JM | Approved | RM | Authorised | SB |
| Document Number | A9P12-AMJ-ELS-Z_ZZZZZ_XX-DR-GI-0007 | | | | | | | Revision | P02 |
| Project | Originator | Volume | | | | | | | |
| Location | Type | Role | Number | | | | | | |

Reproduced by permission of Ordnance Survey on behalf of HMSO. © Crown copyright and database right 2017. All rights reserved. Ordnance Survey Licence number 100046668



~ Proposed Scheme

Viewpoints with Photomontages

- ◆ 120° Viewpoint with Photmontage
- ▼ 90° Viewpoint with Photmontage

Viewpoints

- ◆ 120° Viewpoint
- ▼ 90° Viewpoint

Visibility

- HGVs Visible
- Carriageway Visible

Kilometres

0 0.25 0.5

Status: FINAL Substudy: B

Client: **TRANSPORT SCOTLAND**
COMHDHAIL ALBA

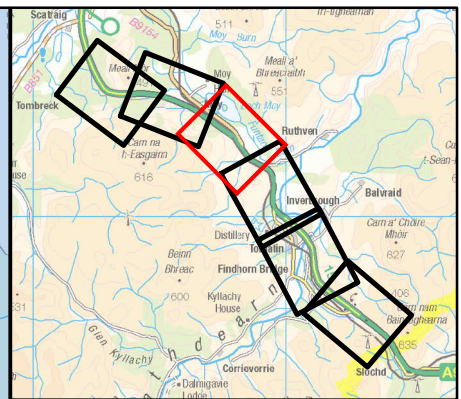
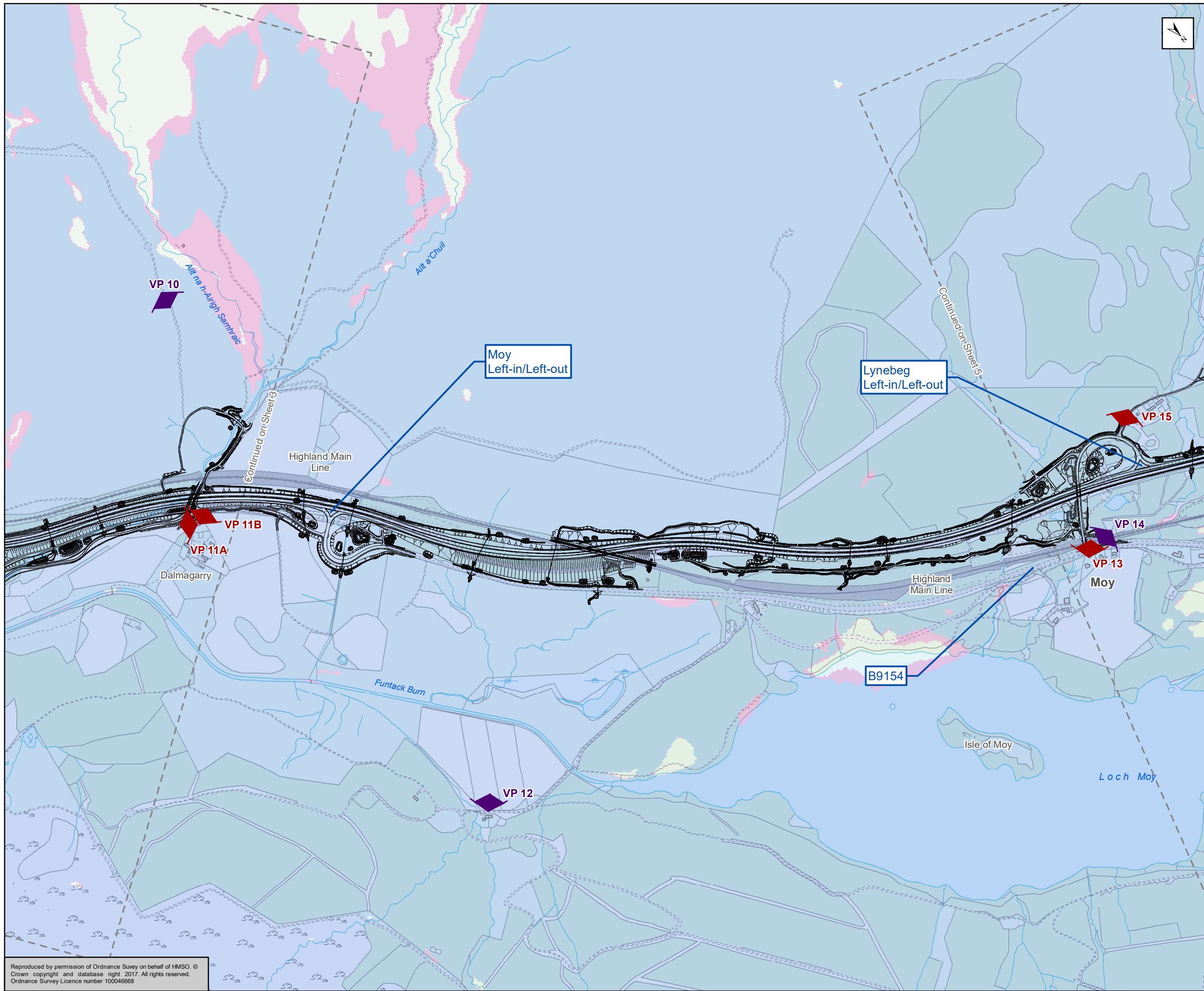
A9
DUALLING
PERTH TO INVERNESS
Tomatin to Moy

ATKINS mouchel

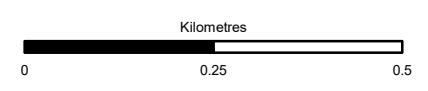
Figure 14.2c
Viewpoint Locations
Sheet 3 of 6

| | | | | |
|--|---|-------------|---------------|----------------|
| Scale: 1:10,000 | Drawn: HAH | Checked: JM | Approved: RM | Authorised: SB |
| Document Number: A9P12-AMJ-ELS-Z_ZZZZZ_XX-DR-GI-0008 | Project Originator: A9P12-AMJ-ELS-Z_ZZZZZ_XX-DR-GI-0008 | Volume: P03 | Revision: P03 | |
| Location: | Type: | Role: | Number: | |

Reproduced by permission of Ordnance Survey on behalf of HMSO. © Crown copyright and database right 2017. All rights reserved. Ordnance Survey Licence number 100046668



- Proposed Scheme
- Viewpoints with Photomontages**
- 120° Viewpoint with Photmontage
- 90° Viewpoint with Photmontage
- Viewpoints**
- 120° Viewpoint
- 90° Viewpoint
- Visibility**
- HGVs Visible
- Carriageway Visible



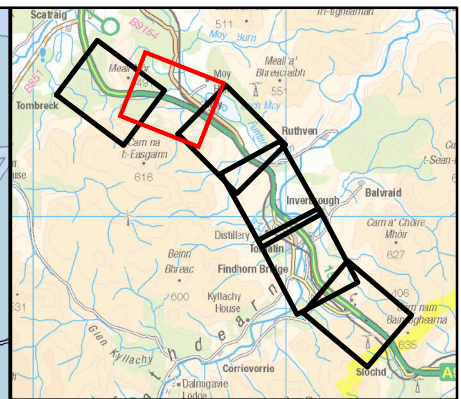
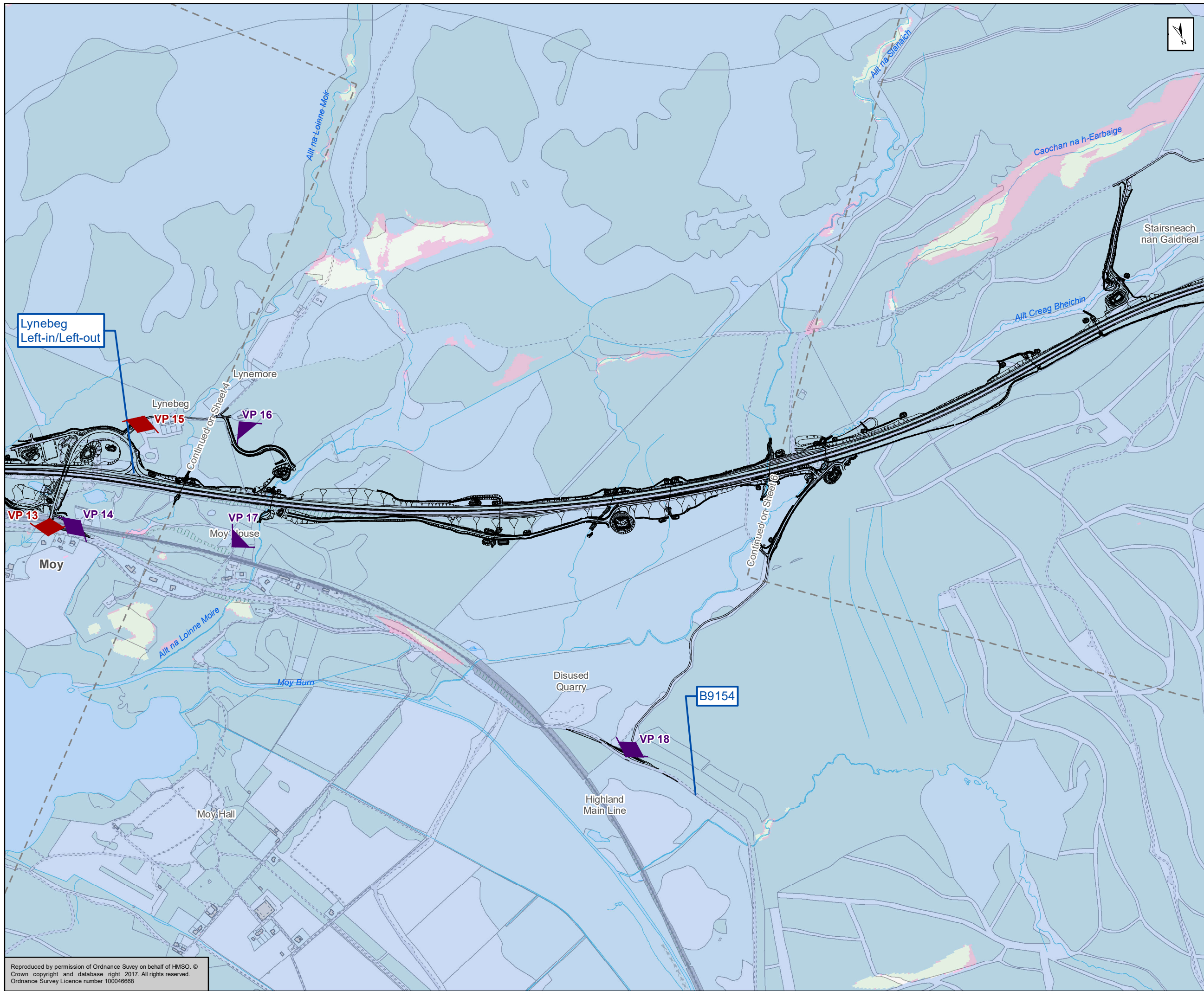
| | | | |
|--------|-------|------------|---|
| Status | FINAL | Subsidiary | B |
|--------|-------|------------|---|



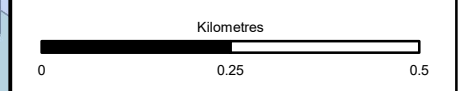
Figure 14.2d
Viewpoint Locations
Sheet 4 of 6

| | | | | | | | | | | |
|-----------------|-------------------------------------|--------|--------|---------|----|----------|----|------------|----------|-----|
| Scale | 1:10,000 | Drawn | HAH | Checked | JM | Approved | RM | Authorised | SB | |
| Document Number | A9P12-AMJ-ELS-Z_ZZZZZ_XX-DR-GI-0009 | | | | | | | | Revision | P02 |
| Project | Originator | Volume | | | | | | | | |
| Location | Type | Role | Number | | | | | | | |

Reproduced by permission of Ordnance Survey on behalf of HMSO. © Crown copyright and database right 2017. All rights reserved. Ordnance Survey Licence number 100046668



- Proposed Scheme
- Viewpoints with Photomontages**
- 120° Viewpoint with Photomontage
- 90° Viewpoint with Photomontage
- Viewpoints**
- 120° Viewpoint
- 90° Viewpoint
- Visibility**
- HGVs Visible
- Carriageway Visible



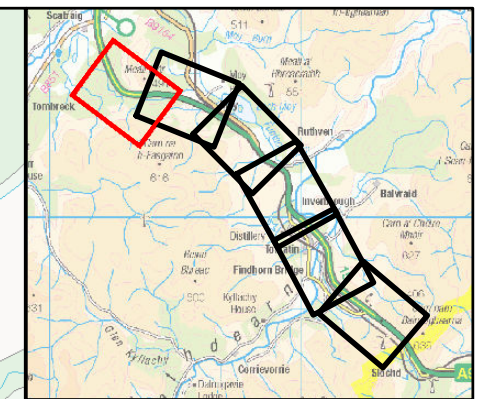
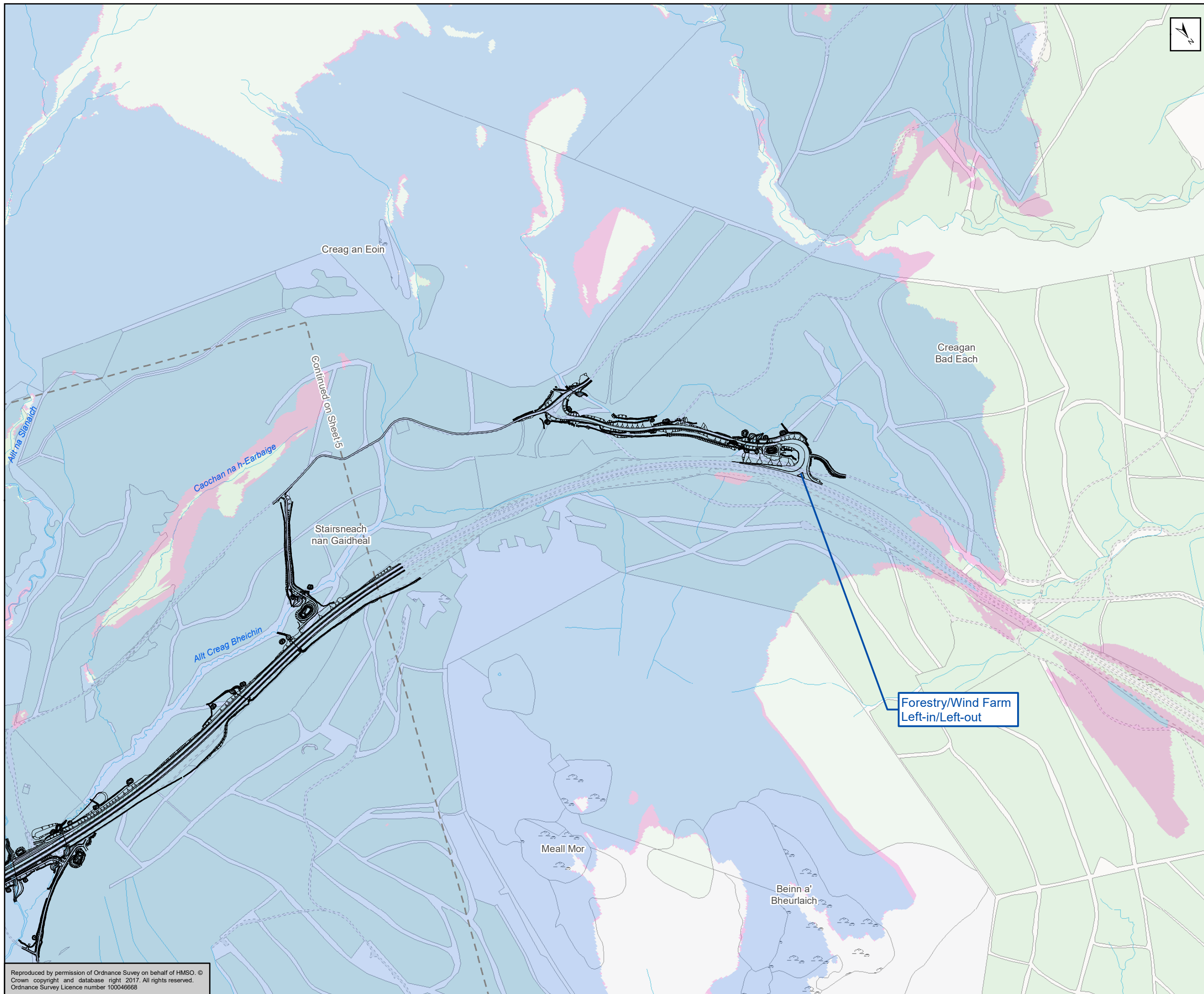
| | | | |
|--------|-------|------------|---|
| Status | FINAL | Subsidiary | B |
|--------|-------|------------|---|



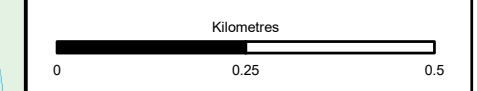
Figure 14.2e
Viewpoint Locations
Sheet 5 of 6

| | | | | | | | | | | |
|-----------------|-------------------------------------|--------|--------|---------|----|----------|----|------------|----------|-----|
| Scale | 1:10,000 | Drawn | HAH | Checked | JM | Approved | RM | Authorised | SB | |
| Document Number | A9P12-AMJ-ELS-Z_ZZZZZ_XX-DR-GI-0010 | | | | | | | | Revision | P02 |
| Project | Originator | Volume | | | | | | | | |
| Location | Type | Role | Number | | | | | | | |

Reproduced by permission of Ordnance Survey on behalf of HMSO. © Crown copyright and database right 2017. All rights reserved. Ordnance Survey Licence number 100046668



- Proposed Scheme
- Viewpoints with Photomontages**
- 120° Viewpoint with Photomontage
- 90° Viewpoint with Photomontage
- Viewpoints**
- 120° Viewpoint
- 90° Viewpoint
- Visibility**
- HGVs Visible
- Carriageway Visible



| | | | |
|--------|-------|------------|---|
| Status | FINAL | Subsidiary | B |
|--------|-------|------------|---|

Client
TRANSPORT SCOTLAND
 COMHDHAIL ALBA

A9
DUALLING
 PERTH TO INVERNESS
 Tomatin to Moy

ATKINS mouchel

Figure 14.2f
 Viewpoint Locations
 Sheet 6 of 6

| | | | | | | | | | |
|-----------------|-------------------------------------|-------|--------|---------|----|----------|----|------------|-----|
| Scale | 1:10,000 | Drawn | HAH | Checked | JM | Approved | RM | Authorised | SB |
| Document Number | A9P12-AMJ-ELS-Z_ZZZZZ_XX-DR-GI-0011 | | | | | | | Revision | P02 |
| Location | Type | Role | Number | | | | | | |

Reproduced by permission of Ordnance Survey on behalf of HMSO. © Crown copyright and database right 2017. All rights reserved. Ordnance Survey Licence number 100046668