

Proposed Scheme  
 250m Study Area  
**Bedrock Aquifer Productivity**  
 Fracture Flow; Low Productivity (FL)  
 Fracture Flow; Very Low Productivity (FVL)  
**Superficial Aquifer Productivity**  
 Intergranular Flow; High Productivity  
 Intergranular Flow; Moderate to High Productivity  
 Intergranular Flow; Low to Moderate Productivity  
 Not a significant aquifer

Kilometres  
 0 0.5 1

Status: FINAL Subtitle: B

Client: **TRANSPORT SCOTLAND**  
COMHDHAIL ALBA

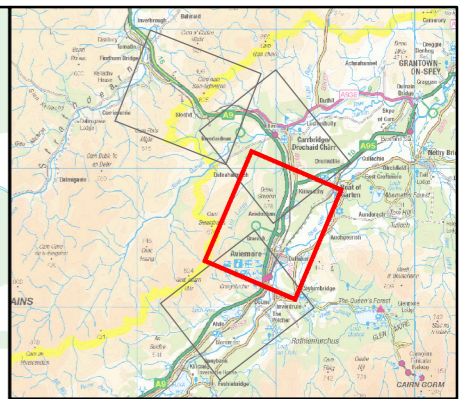
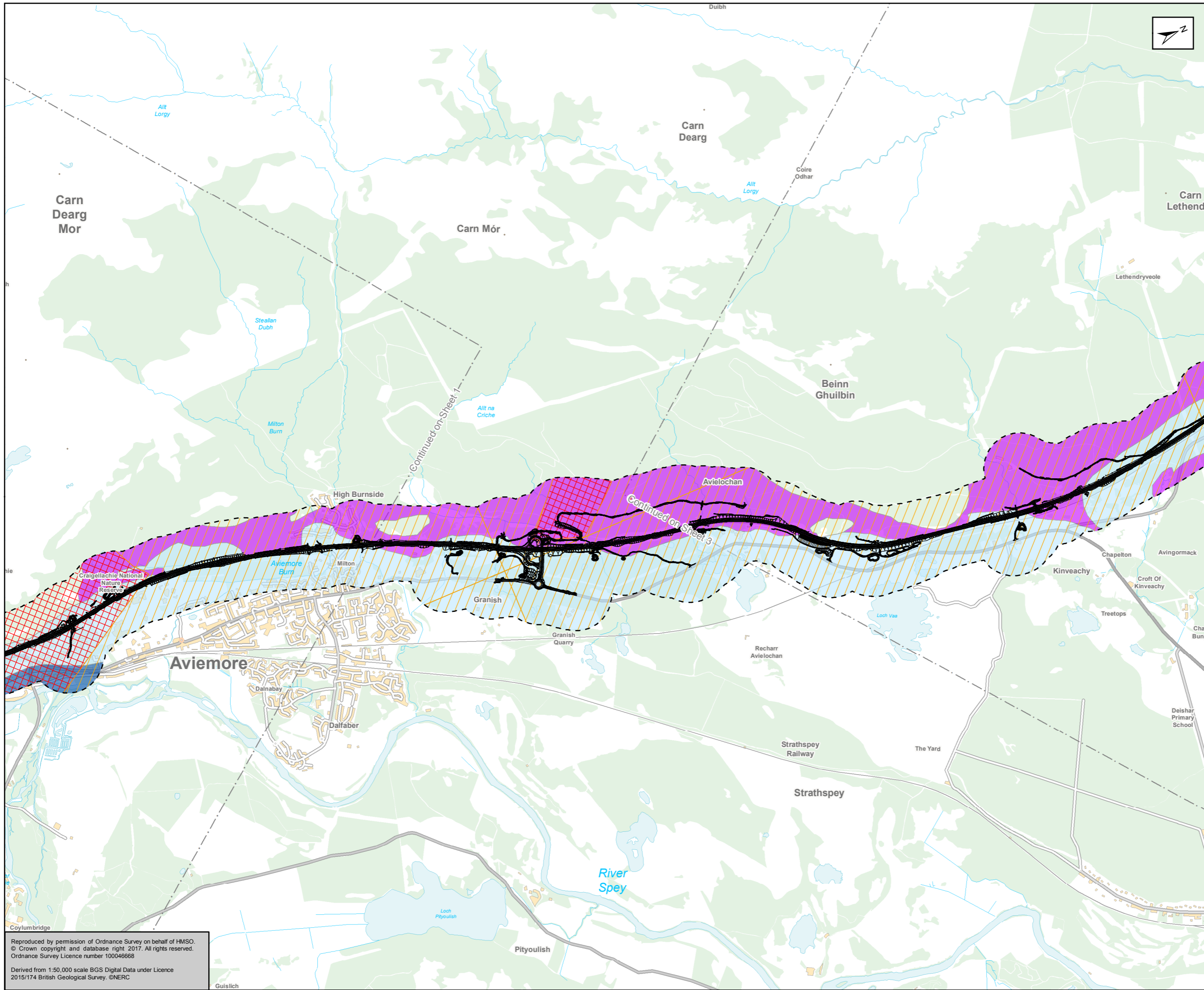


**ATKINS** mouchel

Figure 10.7  
Aquifer Productivity  
Sheet 1 of 4

Scale: 1:25,000	Drawn: MM	Checked: UC	Approved: ROB	Authorised: SB
Document Number: A9P11-AMJ-EGT-H_ZZZZ_X-DR-GI-0073	Project: A9P11-AMJ-EGT-H_ZZZZ_X-DR-GI-0073	Originator: A9P11-AMJ-EGT-H_ZZZZ_X-DR-GI-0073	Volume: A9P11-AMJ-EGT-H_ZZZZ_X-DR-GI-0073	Revision: P04
Location:	Type:	Role:	Number:	

Reproduced by permission of Ordnance Survey on behalf of HMSO.  
 © Crown copyright and database right 2017. All rights reserved.  
 Ordnance Survey Licence number 100046668  
 Derived from 1:50,000 scale BGS Digital Data under Licence  
 2015/174 British Geological Survey. ©NERC



Proposed Scheme  
 250m Study Area

**Bedrock Aquifer Productivity**

- Fracture Flow; Low Productivity (FL)
- Fracture Flow; Very Low Productivity (FVL)

**Superficial Aquifer Productivity**

- Intergranular Flow; High Productivity
- Intergranular Flow; Moderate to High Productivity
- Intergranular Flow; Low to Moderate Productivity
- Not a significant aquifer

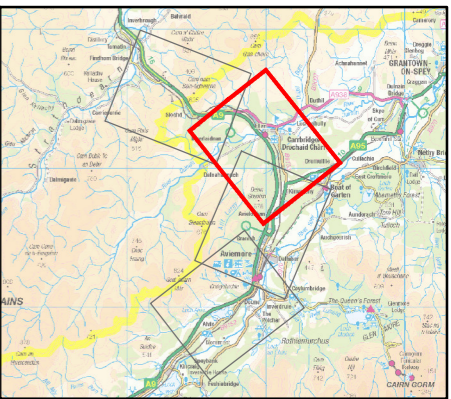
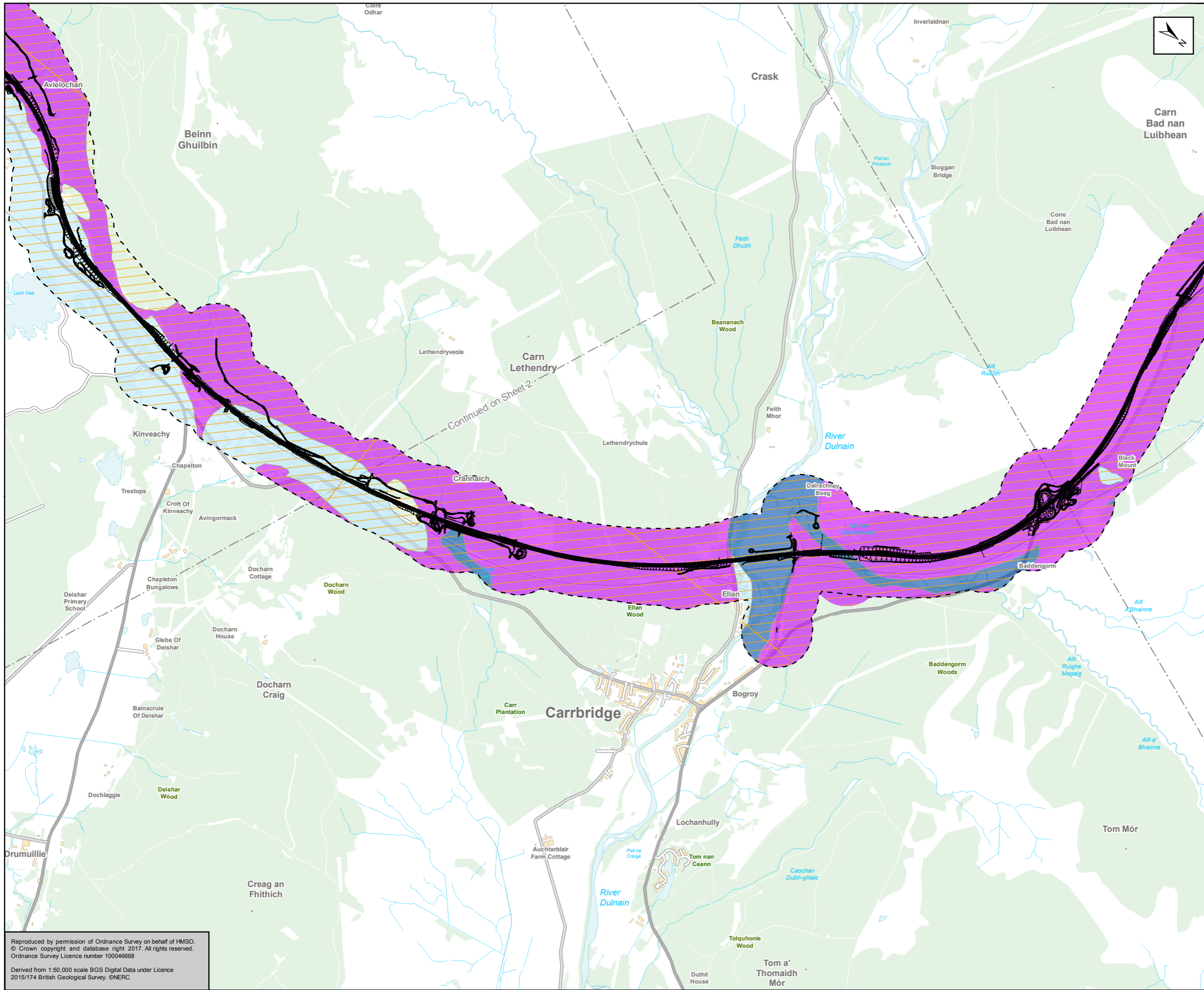
Status: FINAL  
 Subtitle: B



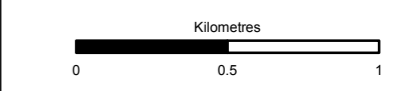
Title: Figure 10.7  
 Aquifer Productivity  
 Sheet 2 of 4

Scale: 1:25,000	Drawn: MM	Checked: UC	Approved: ROB	Authorised: SB
Document Number: A9P11-AMJ-EGT-H_ZZZZ_XX-DR-GI-0074	Project: A9P11-AMJ-EGT-H_ZZZZ_XX-DR-GI-0074	Originator: A9P11-AMJ-EGT-H_ZZZZ_XX-DR-GI-0074	Volume: A9P11-AMJ-EGT-H_ZZZZ_XX-DR-GI-0074	Revision: P04
Location:	Type:	Role:	Number:	

Reproduced by permission of Ordnance Survey on behalf of HMSO.  
 © Crown copyright and database right 2017. All rights reserved.  
 Ordnance Survey Licence number 100046668  
 Derived from 1:50,000 scale BGS Digital Data under Licence  
 2015/174 British Geological Survey. ©NERC



- Proposed Scheme
- 250m Study Area
- Bedrock Aquifer Productivity**
- Fracture Flow; Low Productivity (FL)
- Fracture Flow; Very Low Productivity (FVL)
- Superficial Aquifer Productivity**
- Intergranular Flow; High Productivity
- Intergranular Flow; Moderate to High Productivity
- Intergranular Flow; Low to Moderate Productivity
- Not a significant aquifer



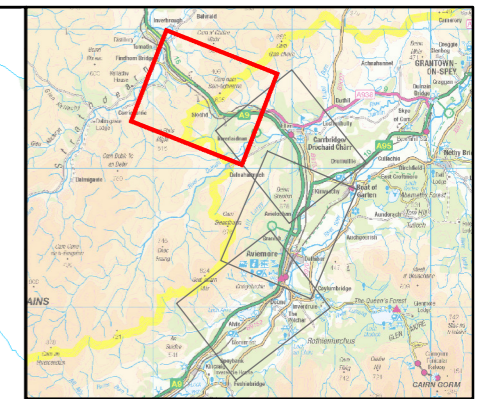
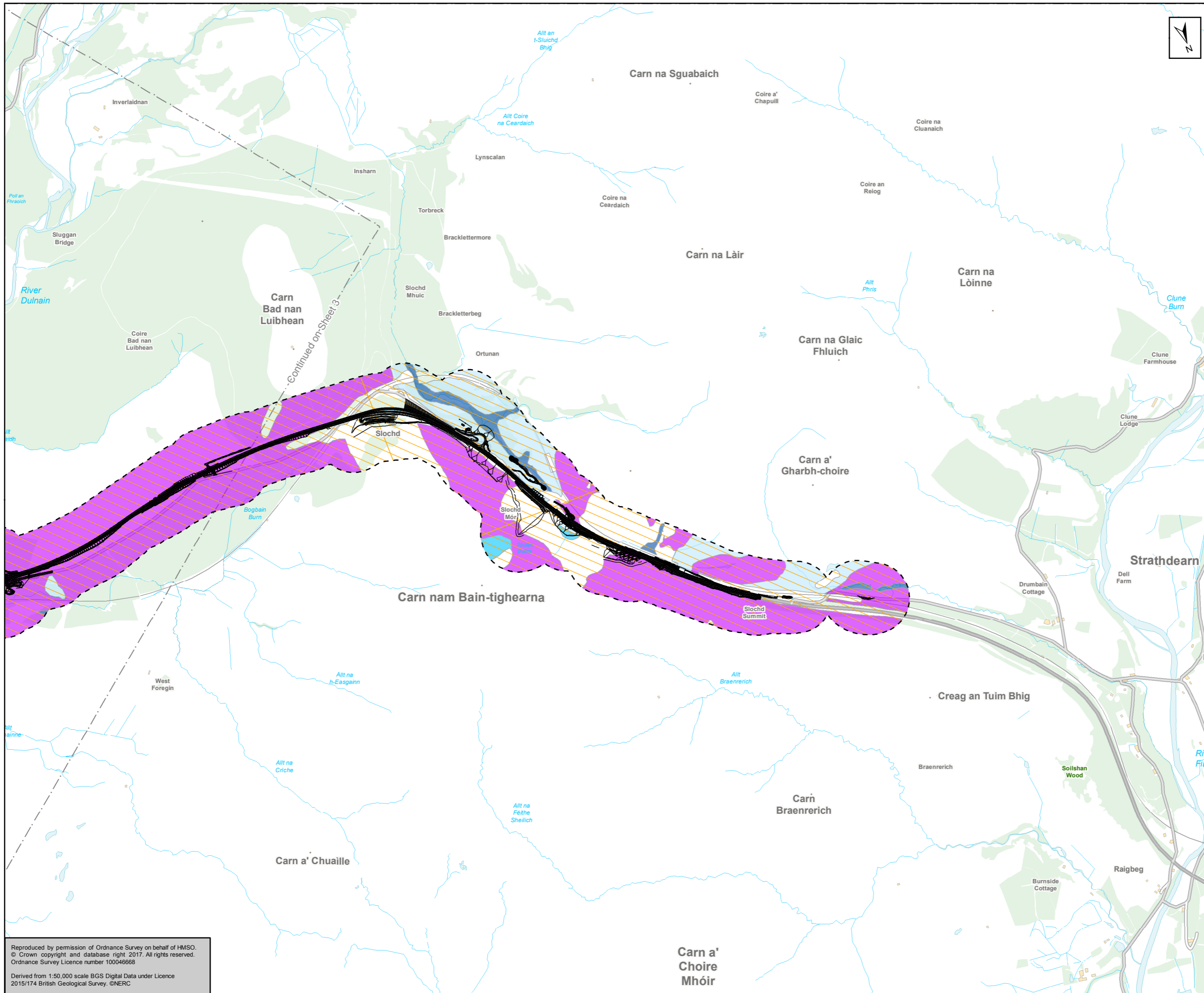
Status: FINAL Subtitle: B



Figure 10.7  
Aquifer Productivity  
Sheet 3 of 4

Scale	1:25,000	Drawn	MM	Checked	UC	Approved	ROB	Authorised	SB
Document Number	Project		Originator		Volume		Revision		
A9P11-AMJ-EGT-H_ZZZZZ_XZ-DR-GI-0075		P04							
Location	Type	Role	Number						

Reproduced by permission of Ordnance Survey on behalf of HMSO. © Crown copyright and database right 2017. All rights reserved. Ordnance Survey Licence number 100046668  
Derived from 1:50,000 scale BGS Digital Data under Licence 2015/174 British Geological Survey. ©NERC



Proposed Scheme  
 250m Study Area  
**Bedrock Aquifer Productivity**  
 Fracture Flow; Low Productivity (FL)  
 Fracture Flow; Very Low Productivity (FVL)  
**Superficial Aquifer Productivity**  
 Intergranular Flow; High Productivity  
 Intergranular Flow; Moderate to High Productivity  
 Intergranular Flow; Low to Moderate Productivity  
 Not a significant aquifer

Kilometres  
 0 0.5 1

Status: FINAL Subtitle: B

Client: **TRANSPORT SCOTLAND**  
COMHDHAIL ALBA

**A9**  
DUALLING  
PERTH TO INVERNESS  
Dalraddy to Slochd

**ATKINS** mouchel

Figure 10.7  
Aquifer Productivity  
Sheet 4 of 4

Scale: 1:25,000	Drawn: MM	Checked: UC	Approved: ROB	Authorised: SB
Document Number: A9P11-AMJ-EGT-H_ZZZZZ_XX-DR-GI-0076	Project: A9P11-AMJ-EGT-H_ZZZZZ_XX-DR-GI-0076	Originator: A9P11-AMJ-EGT-H_ZZZZZ_XX-DR-GI-0076	Volume: A9P11-AMJ-EGT-H_ZZZZZ_XX-DR-GI-0076	Revision: P04
Location:	Type:	Role:	Number:	

Reproduced by permission of Ordnance Survey on behalf of HMSO.  
 © Crown copyright and database right 2017. All rights reserved.  
 Ordnance Survey Licence number 100046668  
 Derived from 1:50,000 scale BGS Digital Data under Licence  
 2015/174 British Geological Survey. ©NERC