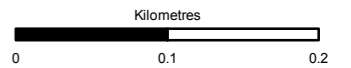


Proposed Scheme
 Cuttings
 Groundwater Outfall Locations
Private Water Supplies
 Property confirmed as supplied by Groundwater Source
 Groundwater source location
Stage 2 GI Locations
 Borehole without Groundwater Level
 Borehole with Groundwater Level
Calculated Radius of Influence
 Estimated Groundwater Level
 Known Groundwater Level
Groundwater Vulnerability
 5
 4a
 4b
 3
 2
 Not available



Status	FINAL	Subsidiary	B
--------	-------	------------	---

TRANSPORT SCOTLAND
 COMHDHAIL ALBA

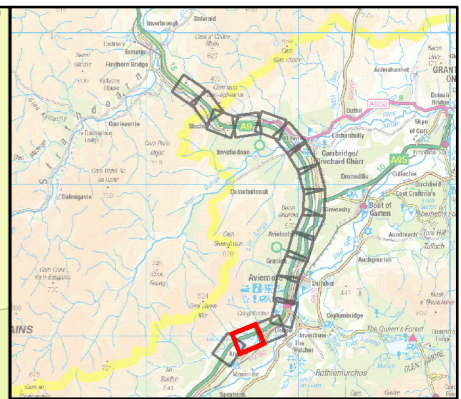
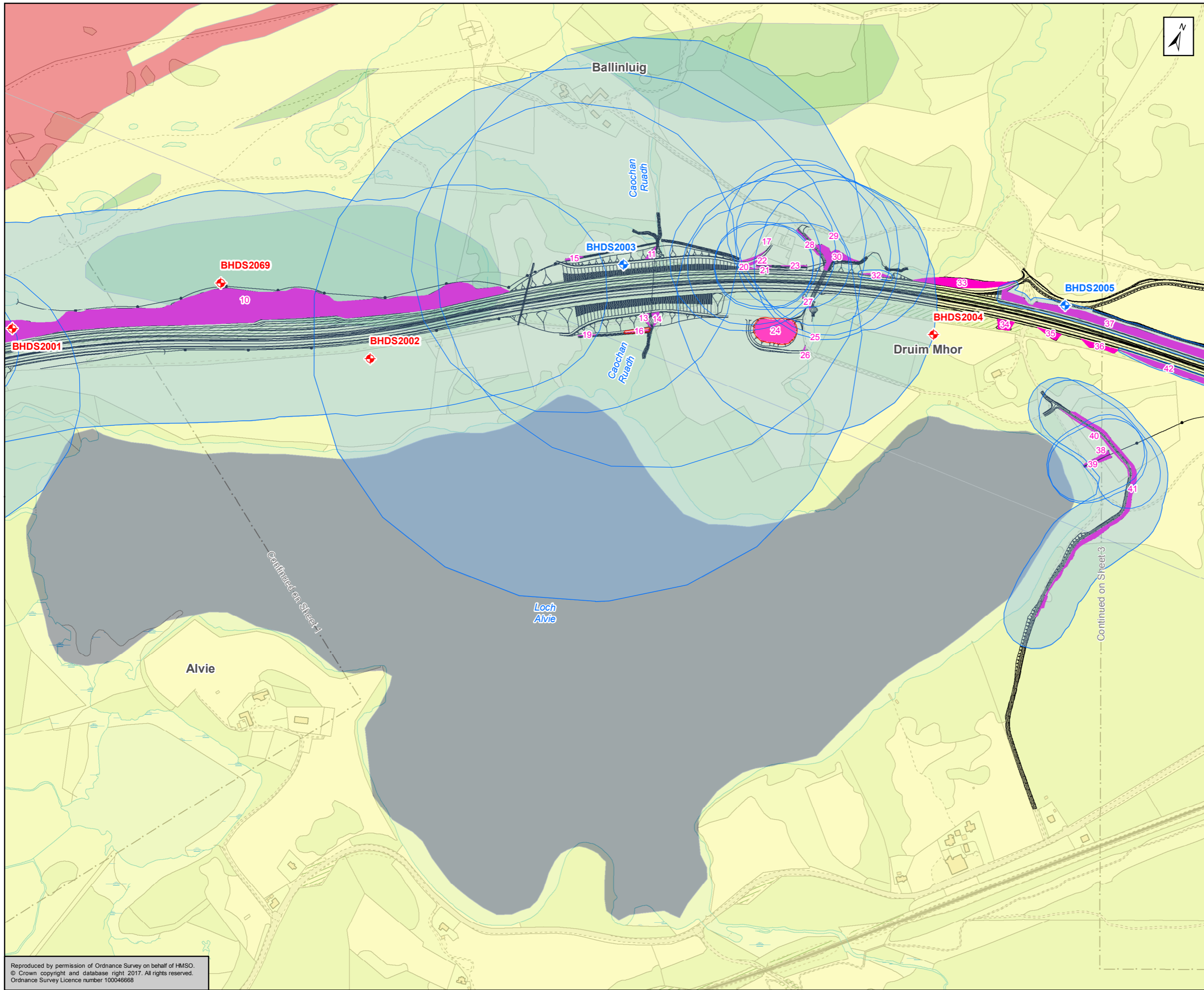
A9
 DUALLING
 PERTH TO INVERNESS
 Dalraddy to Stochd

ATKINS mouchel

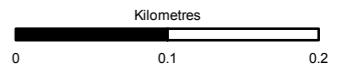
Figure 10.8
 Hydrogeology
 Sheet 1 of 17

Scale	1:5,000	Drawn	MM	Checked	UC	Approved	ROB	Authorised	SB
Document Number	Project Originator Volume							Revision	
	A9P11-AMJ-EGT-H_ZZZZZ_XX-DR-GI-0077								P04
Location	Type	Role	Number						

Reproduced by permission of Ordnance Survey on behalf of HMSO.
 © Crown copyright and database right 2017. All rights reserved.
 Ordnance Survey Licence number 100046668



Proposed Scheme
 Cuttings
 Groundwater Outfall Locations
Private Water Supplies
 Property confirmed as supplied by Groundwater Source
 Groundwater source location
Stage 2 GI Locations
 Borehole without Groundwater Level
 Borehole with Groundwater Level
Calculated Radius of Influence
 Estimated Groundwater Level
 Known Groundwater Level
Groundwater Vulnerability
 5
 4a
 4b
 3
 2
 Not available



Status	FINAL	Subsidiary	B
--------	-------	------------	---

TRANSPORT SCOTLAND
 COMHDHAIL ALBA

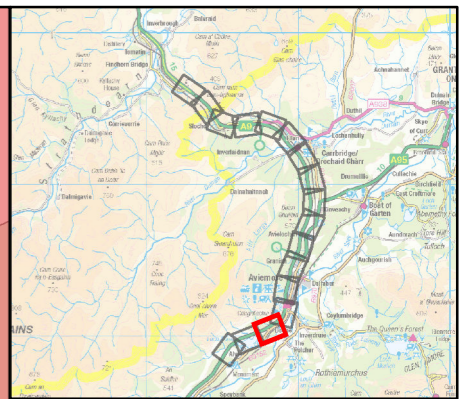
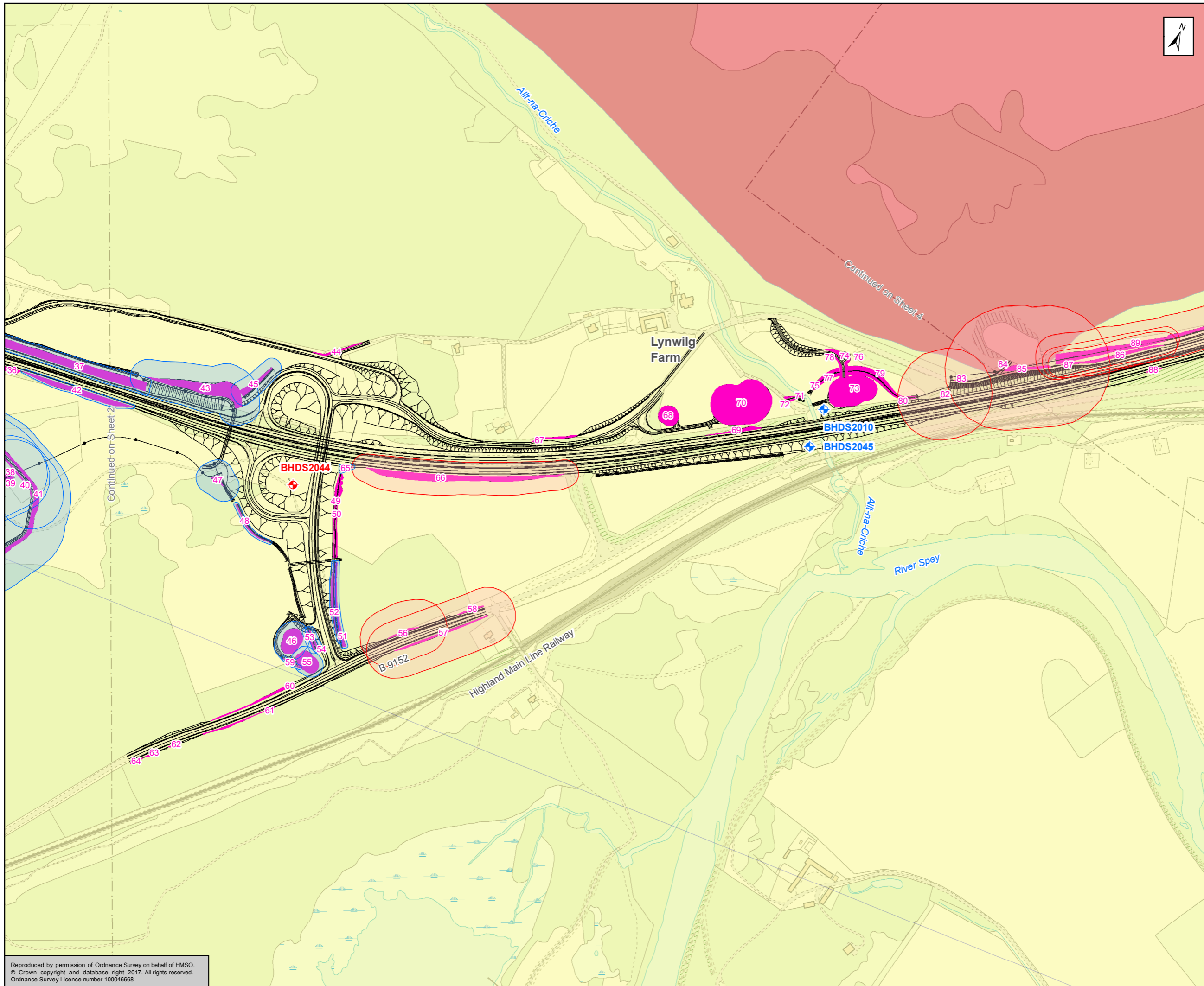
A9
 DUALLING
 PERTH TO INVERNESS
 Dalraddy to Stochd

ATKINS mouchel

Figure 10.8
 Hydrogeology
 Sheet 2 of 17

Scale	1:5,000	Drawn	MM	Checked	UC	Approved	ROB	Authorised	SB	
Document Number	A9P11-AMJ-EGT-H_ZZZZZ_XX-DR-GI-0078								Revision	P04
Project	Originator	Volume								
Location	Type	Role	Number							

Reproduced by permission of Ordnance Survey on behalf of HMSO.
 © Crown copyright and database right 2017. All rights reserved.
 Ordnance Survey Licence number 100046668



Proposed Scheme
 Proposed Scheme

Cuttings
 Cuttings

Groundwater Outfall Locations
 Groundwater Outfall Locations

Private Water Supplies
 Property confirmed as supplied by Groundwater Source
 Groundwater source location

Stage 2 GI Locations
 Borehole without Groundwater Level
 Borehole with Groundwater Level

Calculated Radius of Influence
 Estimated Groundwater Level
 Known Groundwater Level

Groundwater Vulnerability
 5
 4a
 4b
 3
 2
 Not available

Kilometres
 0 0.1 0.2

Status	FINAL	Subsidiary	B
--------	-------	------------	---

Client
 TRANSPORT SCOTLAND
 COMHDHAIL ALBA

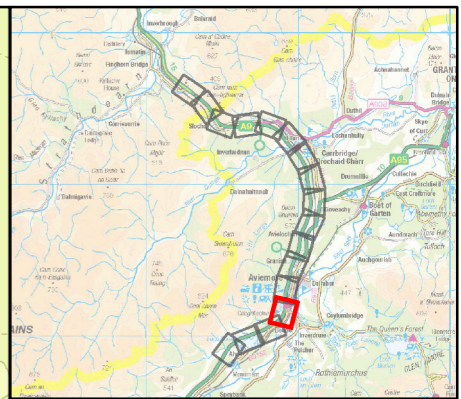
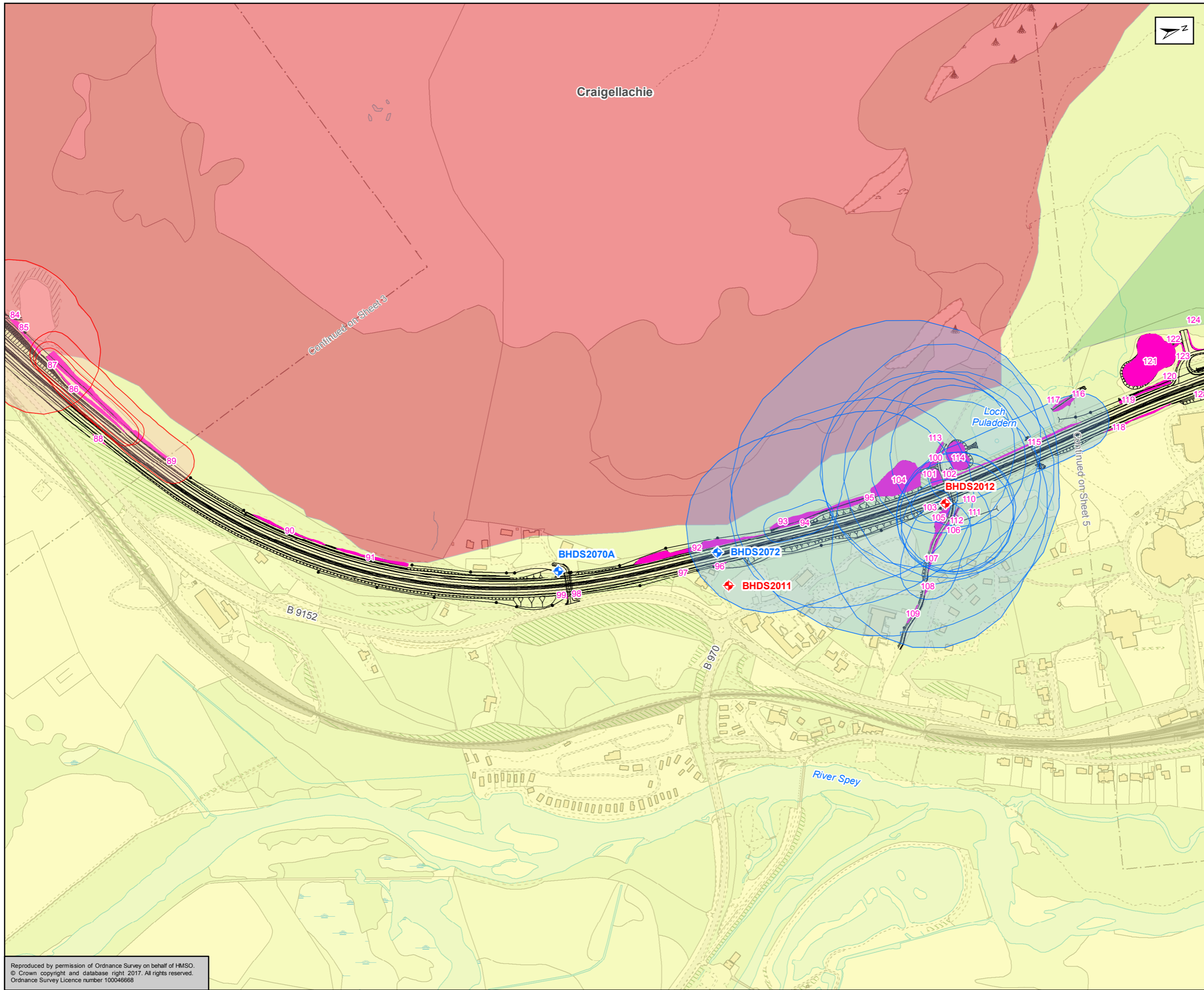
A9
 DUALLING
 PERTH TO INVERNESS
 Dalraddy to Stochd

ATKINS mouchel

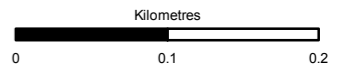
Figure 10.8
 Hydrogeology
 Sheet 3 of 17

Scale	1:5,000	Drawn	MM	Checked	UC	Approved	ROB	Authorised	SB
Document Number	Project Originator Volume A9P11-AMJ-EGT-H_ZZZZZ_XX-DR-GI-0079							Revision	P04
Location	Type	Role	Number						

Reproduced by permission of Ordnance Survey on behalf of HMSO.
 © Crown copyright and database right 2017. All rights reserved.
 Ordnance Survey Licence number 100046668



Proposed Scheme
 Cuttings
 Groundwater Outfall Locations
Private Water Supplies
 Property confirmed as supplied by Groundwater Source
 Groundwater source location
Stage 2 GI Locations
 Borehole without Groundwater Level
 Borehole with Groundwater Level
Calculated Radius of Influence
 Estimated Groundwater Level
 Known Groundwater Level
Groundwater Vulnerability
 5
 4a
 4b
 3
 2
 Not available



Status	FINAL	Subsidiary	B
--------	-------	------------	---

TRANSPORT SCOTLAND
 COMHDHAIL ALBA

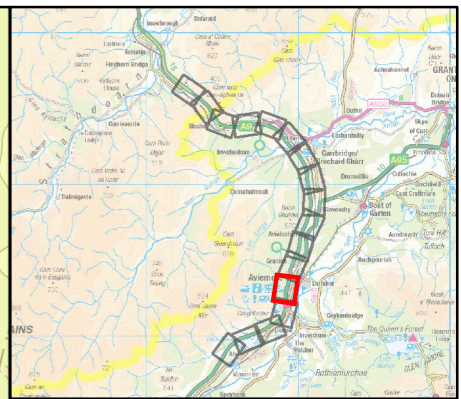
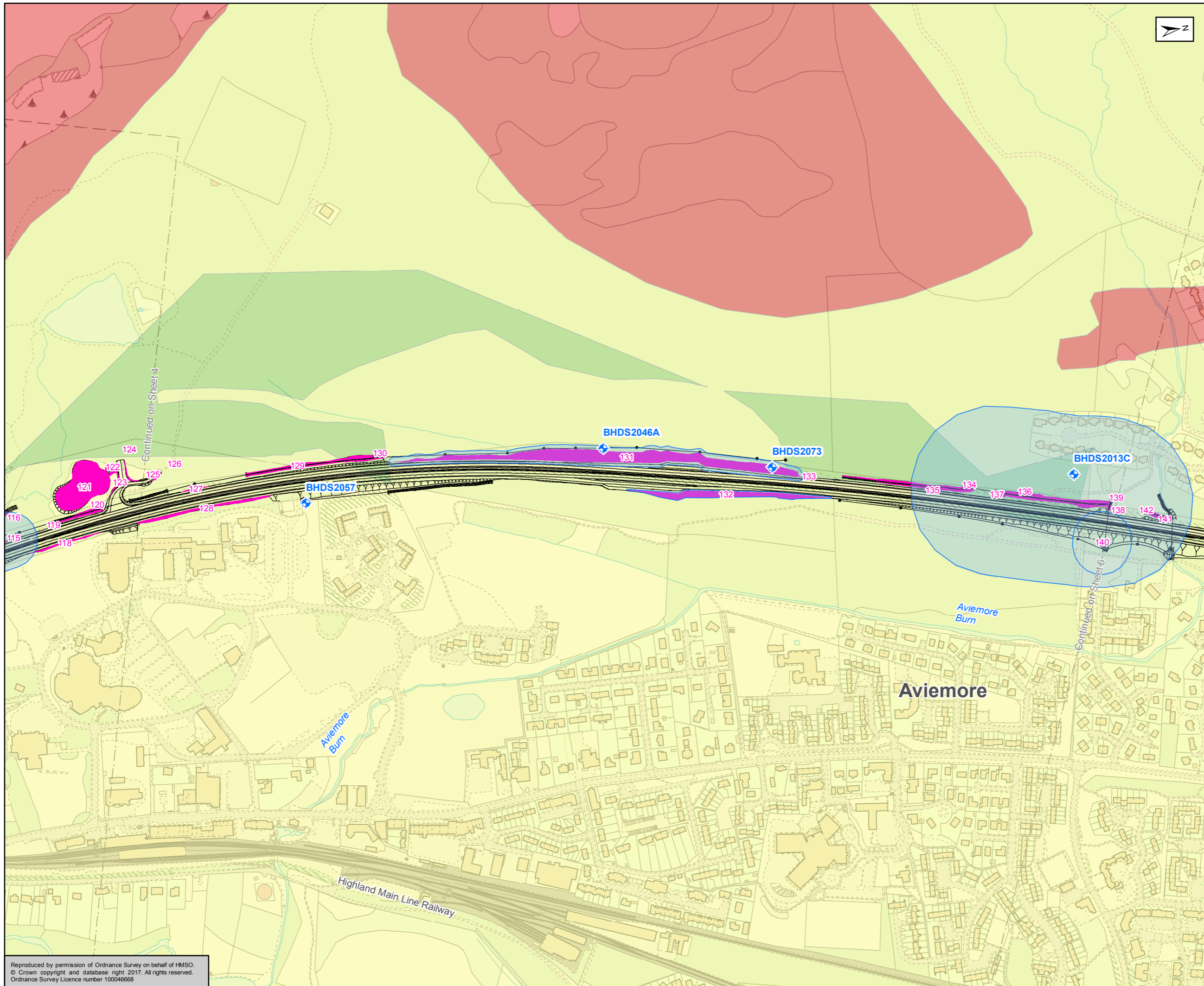
A9
DUALING
 PERTH TO INVERNESS
 Dalraddy to Stochd

ATKINS mouchel

Figure 10.8
 Hydrogeology
 Sheet 4 of 17

Scale	1:5,000	Drawn	MM	Checked	UC	Approved	ROB	Authorised	SB
Document Number	A9P11-AMJ-EGT-H_ZZZZZ_XX-DR-GI-0080							Revision	P04
Project	Originator	Volume							
Location	Type	Role	Number						

Reproduced by permission of Ordnance Survey on behalf of HMSO.
 © Crown copyright and database right 2017. All rights reserved.
 Ordnance Survey Licence number 100046668



Proposed Scheme

Cuttings

Groundwater Outfall Locations

Private Water Supplies

- Property confirmed as supplied by Groundwater Source
- Groundwater source location

Stage 2 GI Locations

- Borehole without Groundwater Level
- Borehole with Groundwater Level

Calculated Radius of Influence

- Estimated Groundwater Level
- Known Groundwater Level

Groundwater Vulnerability

- 5
- 4a
- 4b
- 3
- 2
- Not available

Kilometres
0 0.1 0.2

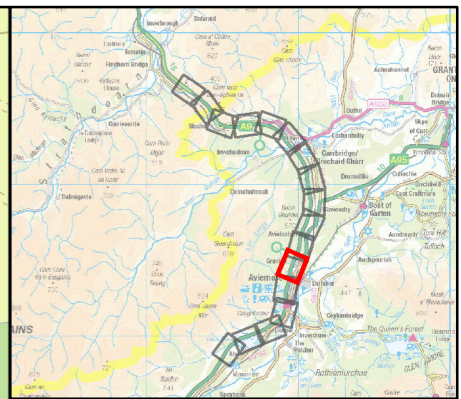
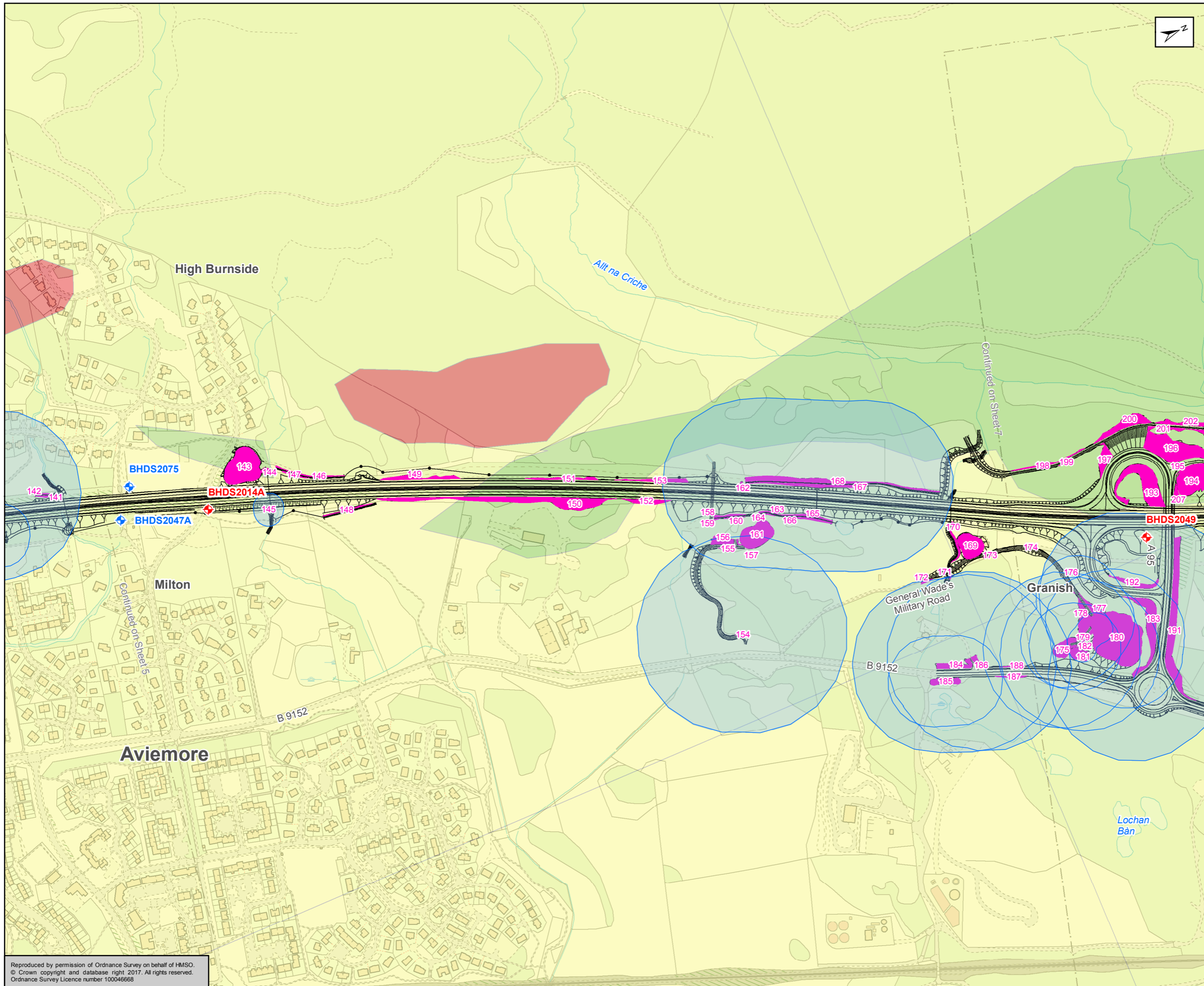
Status	FINAL	Subsity	B
--------	-------	---------	---



Figure 10.8
Hydrogeology
Sheet 5 of 17

Scale	1:5,000	Drawn	MM	Checked	UC	Approved	ROB	Authorised	SB	
Document Number	A9P11-AMJ-EGT-H_ZZZZZ_XX-DR-GI-0321								Revision	P04
Project	Originator	Volume								
Location	Type	Role	Number							

Reproduced by permission of Ordnance Survey on behalf of HMSO.
© Crown copyright and database right 2017. All rights reserved.
Ordnance Survey Licence number 100046668



Proposed Scheme

Cuttings

Groundwater Outfall Locations

Private Water Supplies

- Property confirmed as supplied by Groundwater Source
- Groundwater source location

Stage 2 GI Locations

- Borehole without Groundwater Level
- Borehole with Groundwater Level

Calculated Radius of Influence

- Estimated Groundwater Level
- Known Groundwater Level

Groundwater Vulnerability

- 5
- 4a
- 4b
- 3
- 2
- Not available

Kilometres
0 0.1 0.2

Status: FINAL Subtitle: B

Client: **TRANSPORT SCOTLAND**
COMHDHAIL ALBA

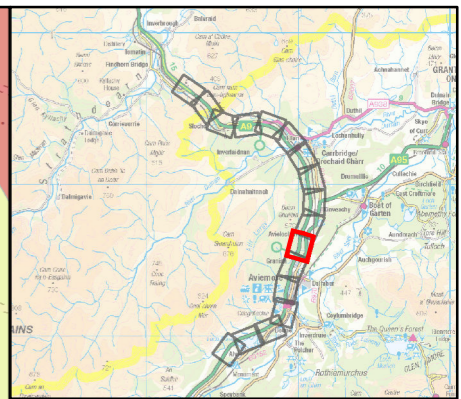
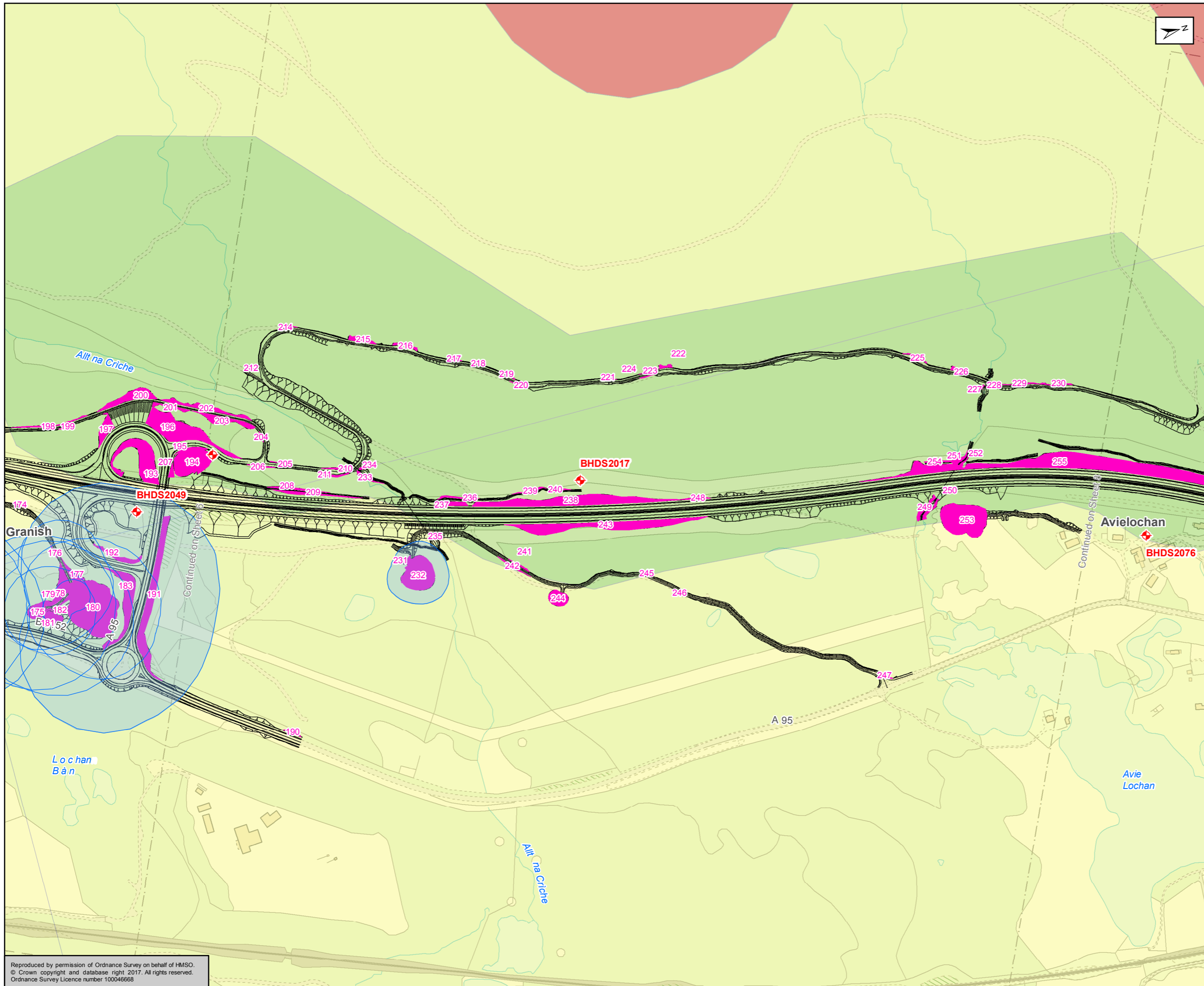
A9
DUALLING
PERTH TO INVERNESS
Dalraddy to Stlochd

ATKINS mouchel

Figure 10.8
Hydrogeology
Sheet 6 of 17

Scale: 1:5,000	Drawn: MM	Checked: UC	Approved: ROB	Authorised: SB
Document Number: A9P11-AMJ-EGT-H_ZZZZ_XX-DR-GI-0322	Project: A9P11-AMJ-EGT-H_ZZZZ_XX-DR-GI-0322	Originator: [Blank]	Volume: [Blank]	Revision: P04
Location: [Blank]	Type: [Blank]	Role: [Blank]	Number: [Blank]	[Blank]

Reproduced by permission of Ordnance Survey on behalf of HMSO.
© Crown copyright and database right 2017. All rights reserved.
Ordnance Survey Licence number 100046668



Proposed Scheme
 Cuttings
 Groundwater Outfall Locations
Private Water Supplies
 Property confirmed as supplied by Groundwater Source
 Groundwater source location
Stage 2 GI Locations
 Borehole without Groundwater Level
 Borehole with Groundwater Level
Calculated Radius of Influence
 Estimated Groundwater Level
 Known Groundwater Level
Groundwater Vulnerability
 5
 4a
 4b
 3
 2
 Not available

Status	FINAL	Subsidiary	B
--------	-------	------------	---

TRANSPORT SCOTLAND
 COMHDHAIL ALBA

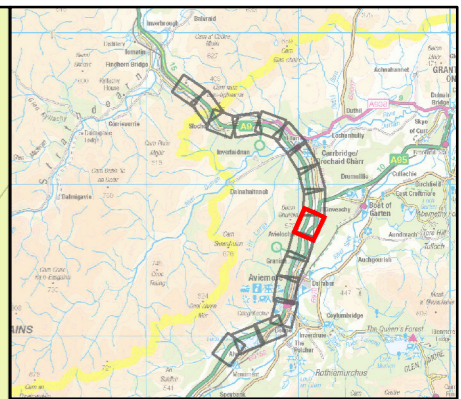
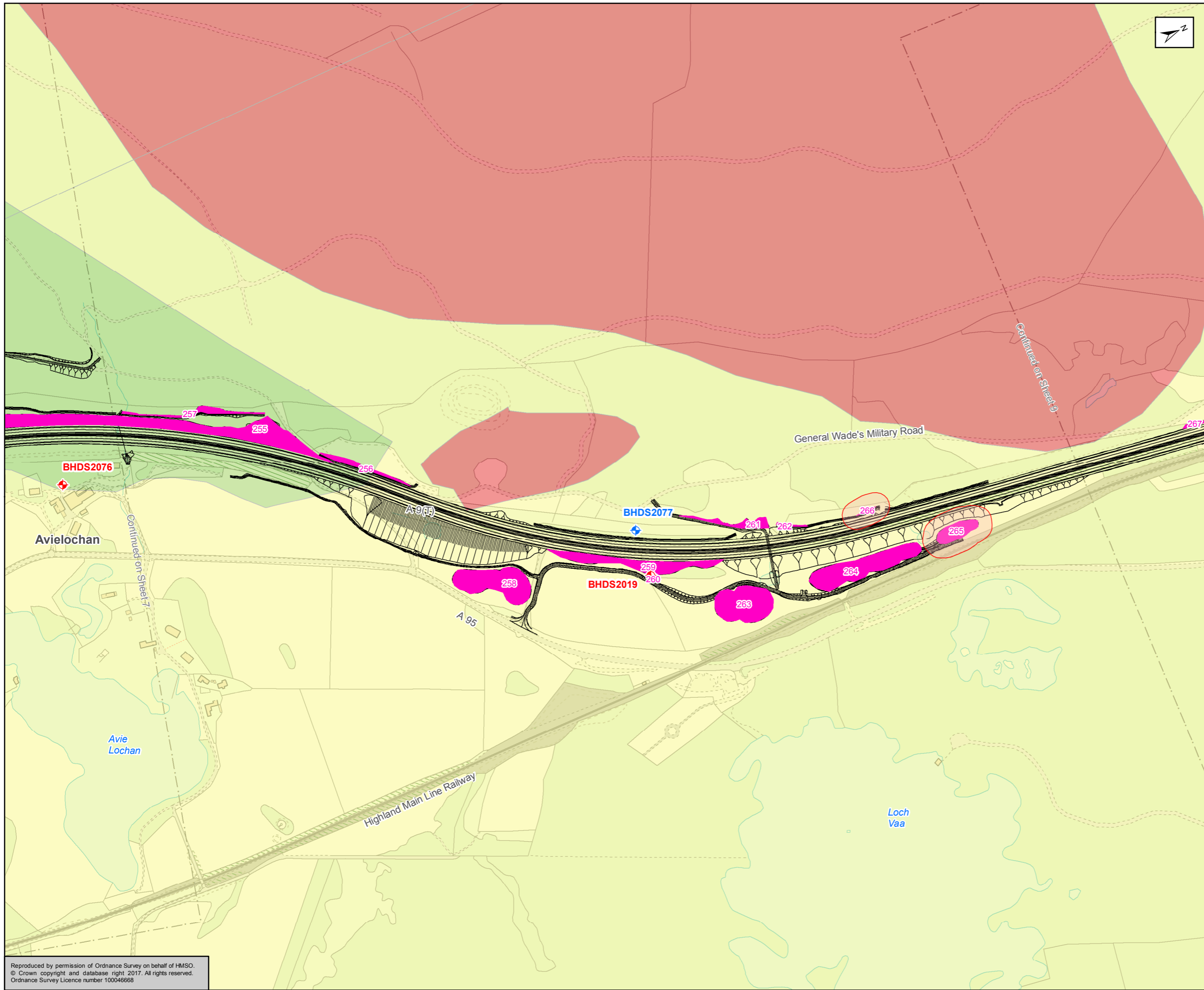
A9 DUALLING
 PERTH TO INVERNESS
 Dalraddy to Slochd

ATKINS mouchel

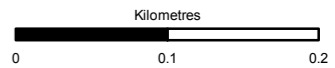
Figure 10.8
 Hydrogeology
 Sheet 7 of 17

Scale	1:5,000	Drawn	MM	Checked	UC	Approved	ROB	Authorised	SB	
Document Number	A9P11-AMJ-EGT-H_ZZZZ_X-DR-GI-0323								Revision	P04
Project	Originator	Volume								
Location	Type	Role	Number							

Reproduced by permission of Ordnance Survey on behalf of HMSO.
 © Crown copyright and database right 2017. All rights reserved.
 Ordnance Survey Licence number 100046668



Proposed Scheme
 Cuttings
 Groundwater Outfall Locations
Private Water Supplies
 Property confirmed as supplied by Groundwater Source
 Groundwater source location
Stage 2 GI Locations
 Borehole without Groundwater Level
 Borehole with Groundwater Level
Calculated Radius of Influence
 Estimated Groundwater Level
 Known Groundwater Level
Groundwater Vulnerability
 5
 4a
 4b
 3
 2
 Not available



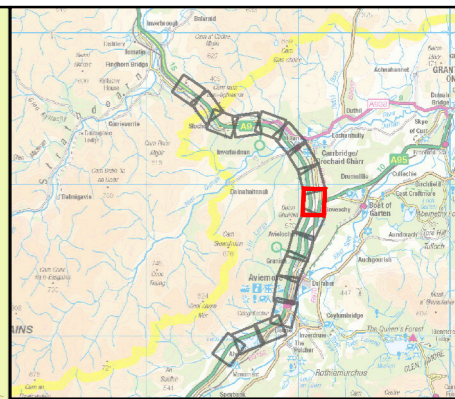
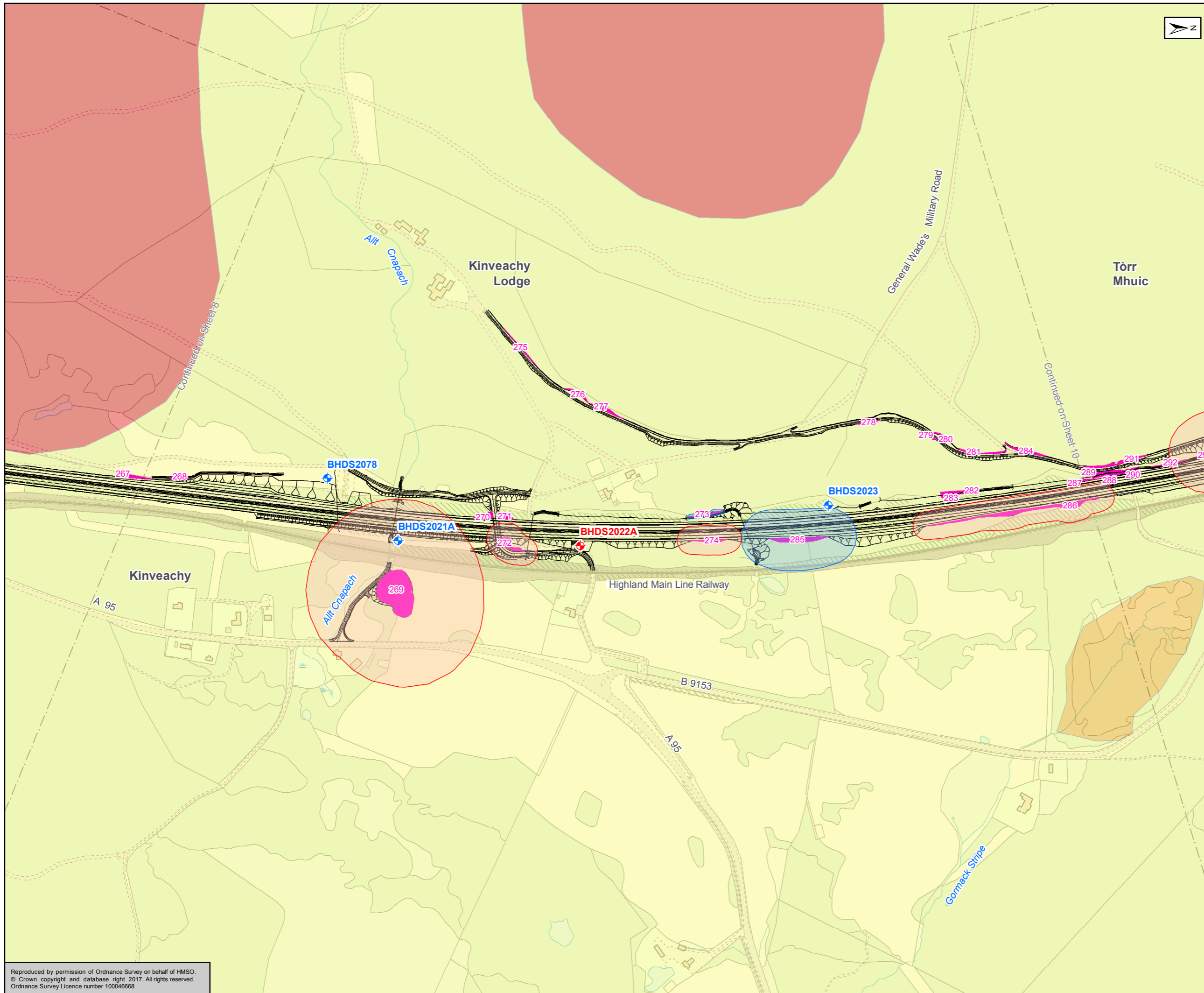
Status	FINAL	Subsidiary	B
--------	-------	------------	---



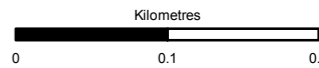
Figure 10.8
Hydrogeology
Sheet 8 of 17

Scale	1:5,000	Drawn	MM	Checked	UC	Approved	ROB	Authorised	SB
Document Number	A9P11-AMJ-EGT-H_ZZZZZ_XX-DR-GI-0324							Revision	P04
Project	Originator	Volume							
Location	Type	Role	Number						

Reproduced by permission of Ordnance Survey on behalf of HMSO.
© Crown copyright and database right 2017. All rights reserved.
Ordnance Survey Licence number 100046668



Proposed Scheme
 Cuttings
 Groundwater Outfall Locations
Private Water Supplies
 Property confirmed as supplied by Groundwater Source
 Groundwater source location
Stage 2 GI Locations
 Borehole without Groundwater Level
 Borehole with Groundwater Level
Calculated Radius of Influence
 Estimated Groundwater Level
 Known Groundwater Level
Groundwater Vulnerability
 5
 4a
 4b
 3
 2
 Not available



Status	FINAL	Subsidiary	B
--------	-------	------------	---

TRANSPORT SCOTLAND
 COMHDHAIL ALBA

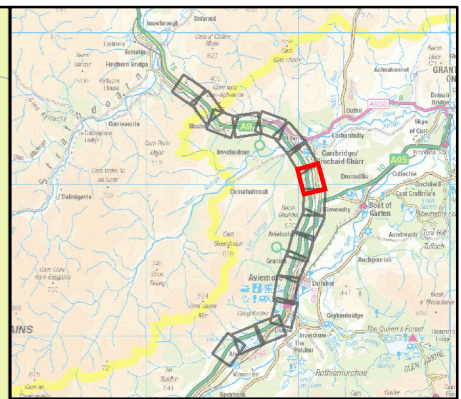
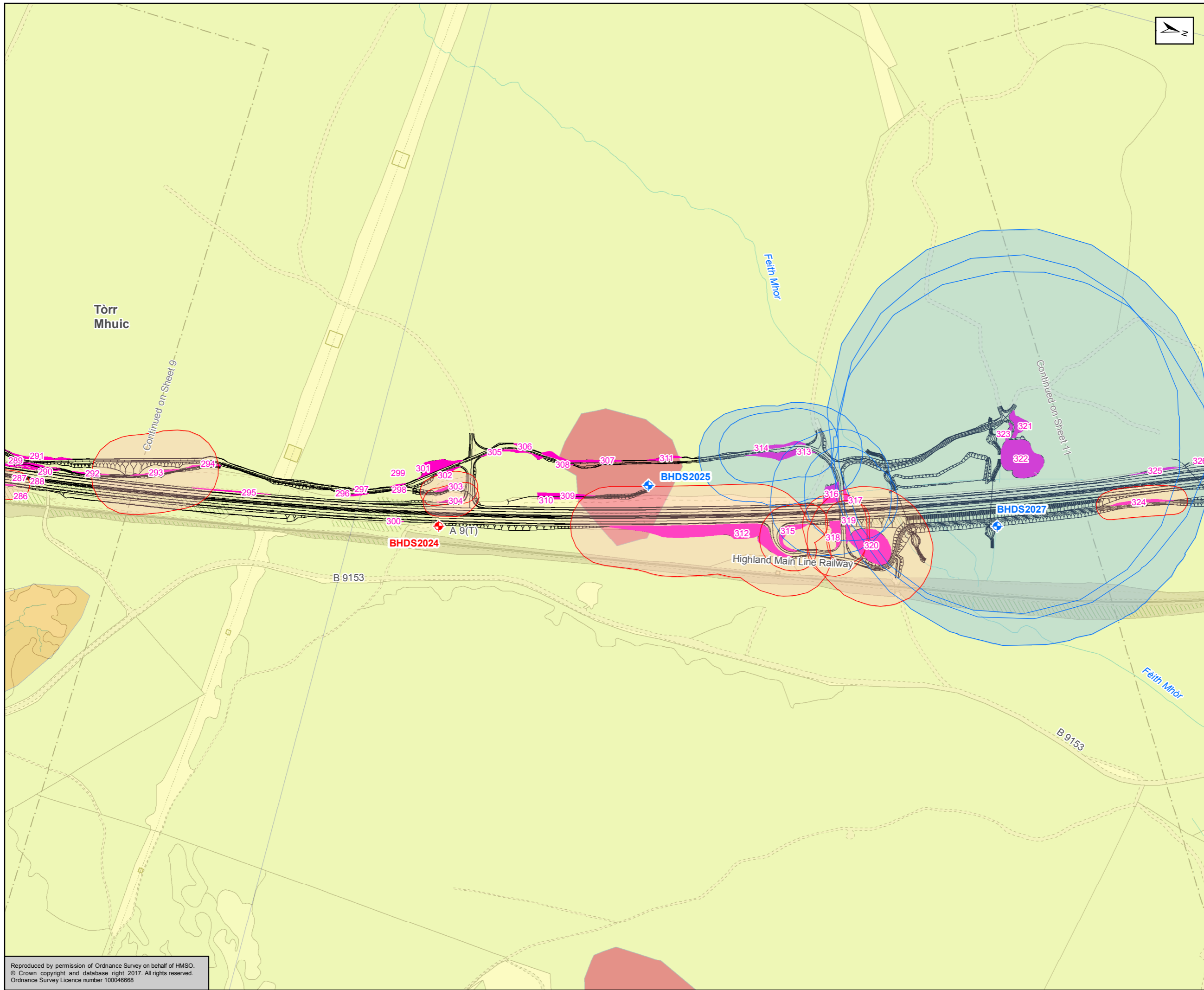
A9
 DUALLING
 PERTH TO INVERNESS
 Dalraddy to Slochd

ATKINS mouchel

Figure 10.8
 Hydrogeology
 Sheet 9 of 17

Scale	1:5,000	Drawn	MM	Checked	UC	Approved	ROB	Authorised	SB
Document Number	A9P11-AMJ-EGT-H_ZZZZ_XX-DR-GI-0325							Revision	P04
Project	Originator	Volume							
Location	Type	Role	Number						

Reproduced by permission of Ordnance Survey on behalf of HMSO.
 © Crown copyright and database right 2017. All rights reserved.
 Ordnance Survey Licence number 100046668



Proposed Scheme

Cuttings

Groundwater Outfall Locations

Private Water Supplies

- Property confirmed as supplied by Groundwater Source
- Groundwater source location

Stage 2 GI Locations

- Borehole without Groundwater Level
- Borehole with Groundwater Level

Calculated Radius of Influence

- Estimated Groundwater Level
- Known Groundwater Level

Groundwater Vulnerability

- 5
- 4a
- 4b
- 3
- 2
- Not available

Kilometres

0 0.1 0.2

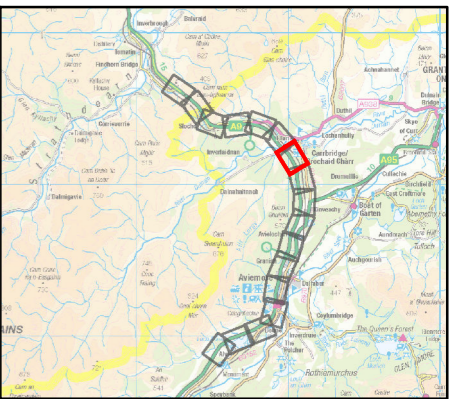
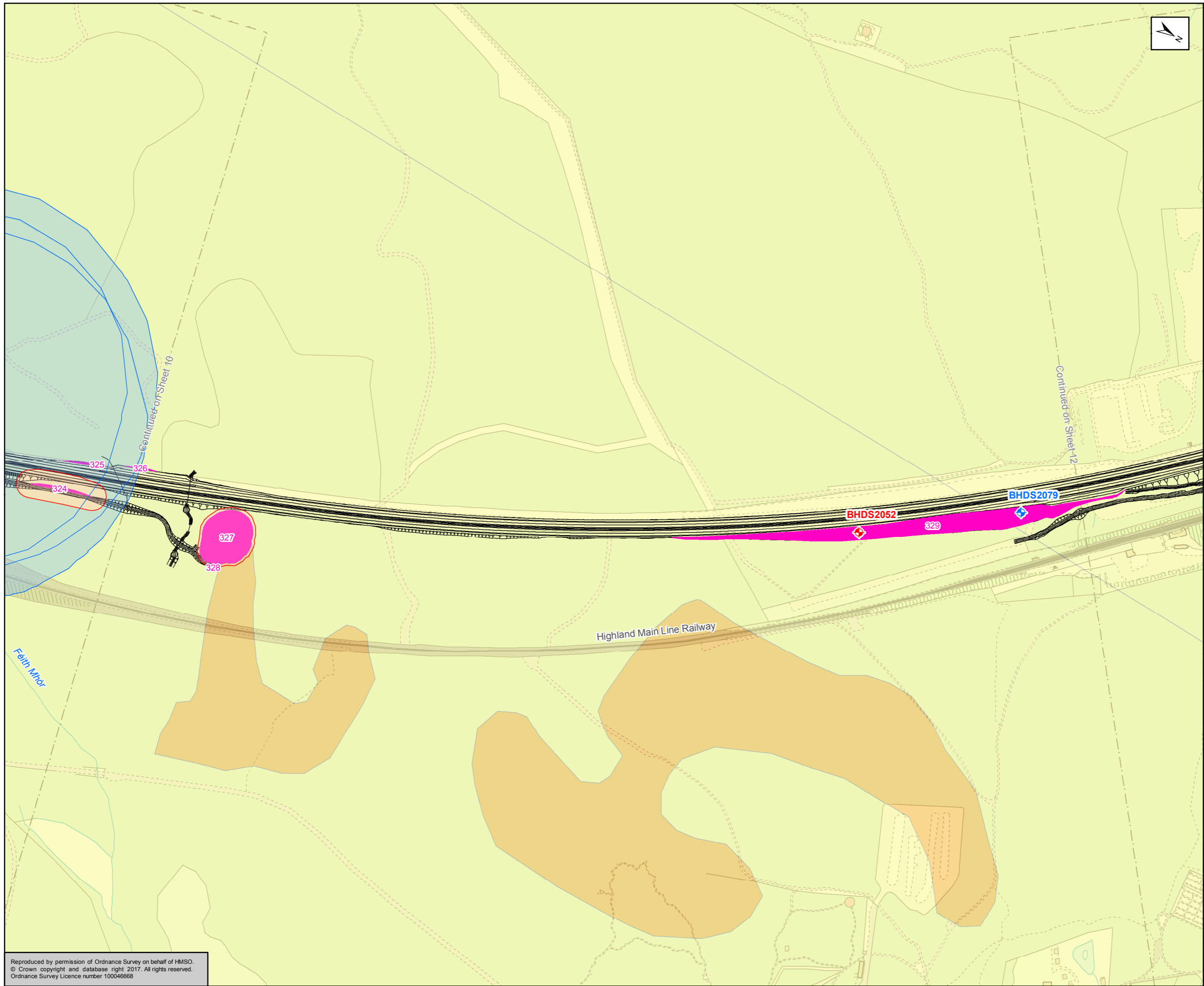
Status	FINAL	Subsidiary	B
--------	-------	------------	---



Figure 10.8
Hydrogeology
Sheet 10 of 17

Scale	1:5,000	Drawn	MM	Checked	UC	Approved	ROB	Authorised	SB
Document Number	A9P11-AMJ-EGT-H_ZZZZ_XX-DR-GI-0326							Revision	P04
Project	Originator	Volume							
Location	Type	Role							

Reproduced by permission of Ordnance Survey on behalf of HMSO.
© Crown copyright and database right 2017. All rights reserved.
Ordnance Survey Licence number 100046668



Proposed Scheme

- Proposed Scheme
- Cuttings
- Groundwater Outfall Locations

Private Water Supplies

- Property confirmed as supplied by Groundwater Source
- Groundwater source location

Stage 2 GI Locations

- Borehole without Groundwater Level
- Borehole with Groundwater Level

Calculated Radius of Influence

- Estimated Groundwater Level
- Known Groundwater Level

Groundwater Vulnerability

- 5
- 4a
- 4b
- 3
- 2
- Not available

Kilometres
0 0.1 0.2

Status	FINAL	Subsidiary	B
--------	-------	------------	---

Client
TRANSPORT SCOTLAND
COMHDHAIL ALBA

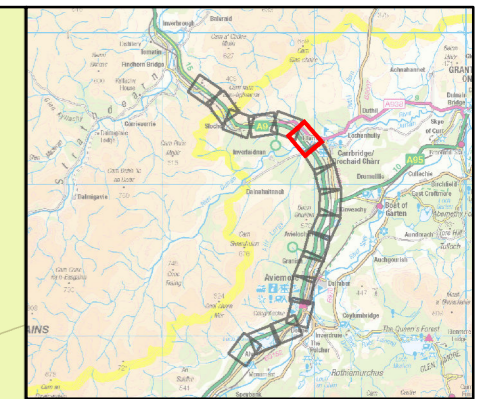
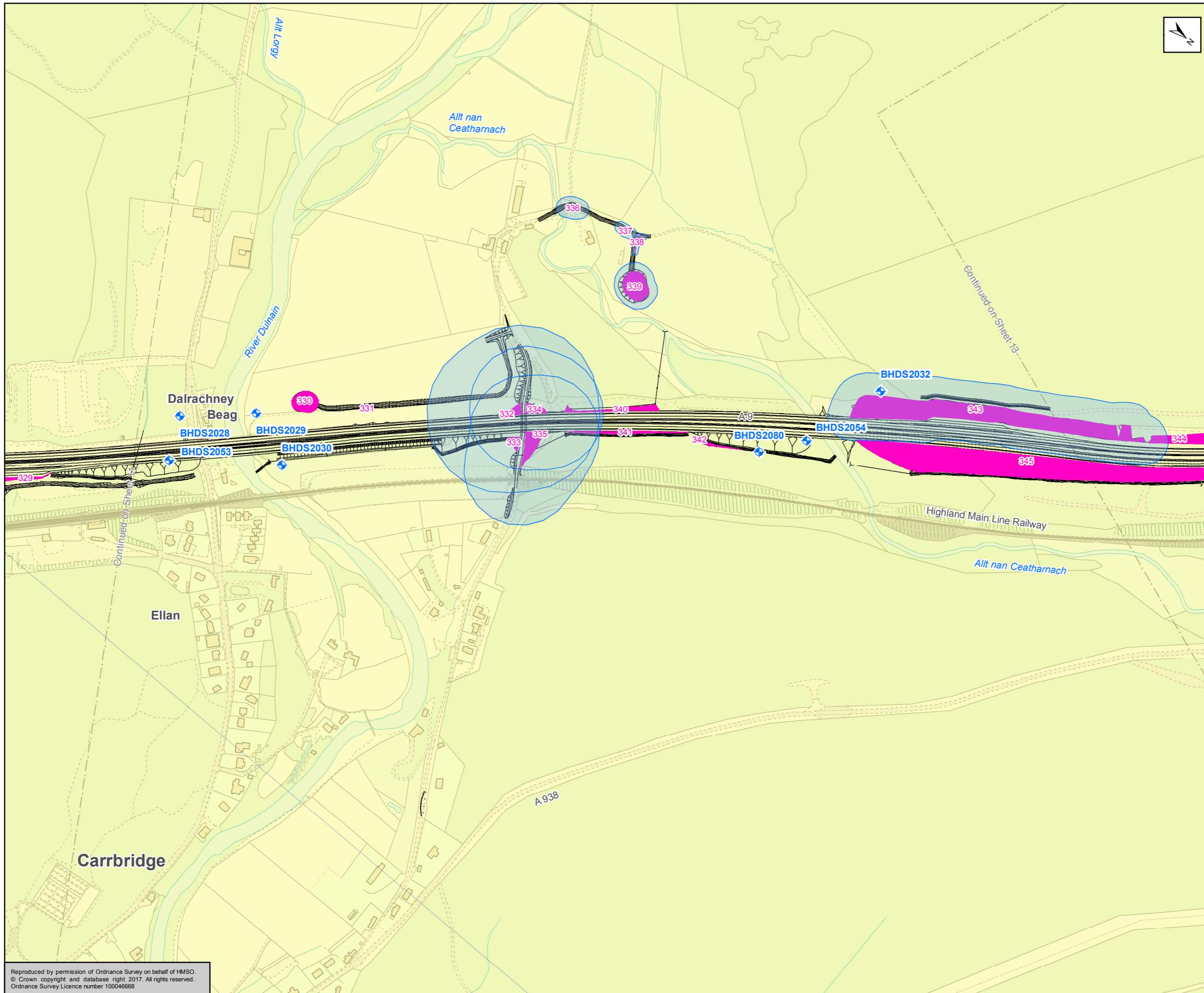
A9
DUALING
PERTH TO INVERNESS
Dalraddy to Slochd

ATKINS mouchel

Figure 10.8
Hydrogeology
Sheet 11 of 17

Scale	1:5,000	Drawn	MM	Checked	UC	Approved	ROB	Authorised	SB
Document Number	A9P11-AMJ-EGT-H_ZZZZZ_XX-DR-GI-0327							Revision	P04
Project	Originator	Volume							
Location	Type	Role	Number						

Reproduced by permission of Ordnance Survey on behalf of HMSO.
© Crown copyright and database right 2017. All rights reserved.
Ordnance Survey Licence number 100046668



Proposed Scheme

- Proposed Scheme
- Cuttings
- Groundwater Outfall Locations

Private Water Supplies

- Property confirmed as supplied by Groundwater Source
- Groundwater source location

Stage 2 GI Locations

- Borehole without Groundwater Level
- Borehole with Groundwater Level

Calculated Radius of Influence

- Estimated Groundwater Level
- Known Groundwater Level

Groundwater Vulnerability

- 5
- 4a
- 4b
- 3
- 2
- Not available

Kilometres
0 0.1 0.2

Status	FINAL	Subsity	B
--------	-------	---------	---

Client
TRANSPORT SCOTLAND
COMHDHAIL ALBA

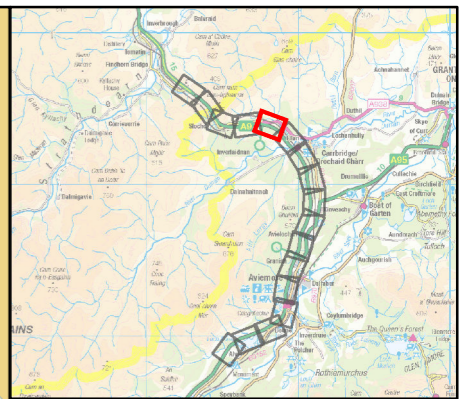
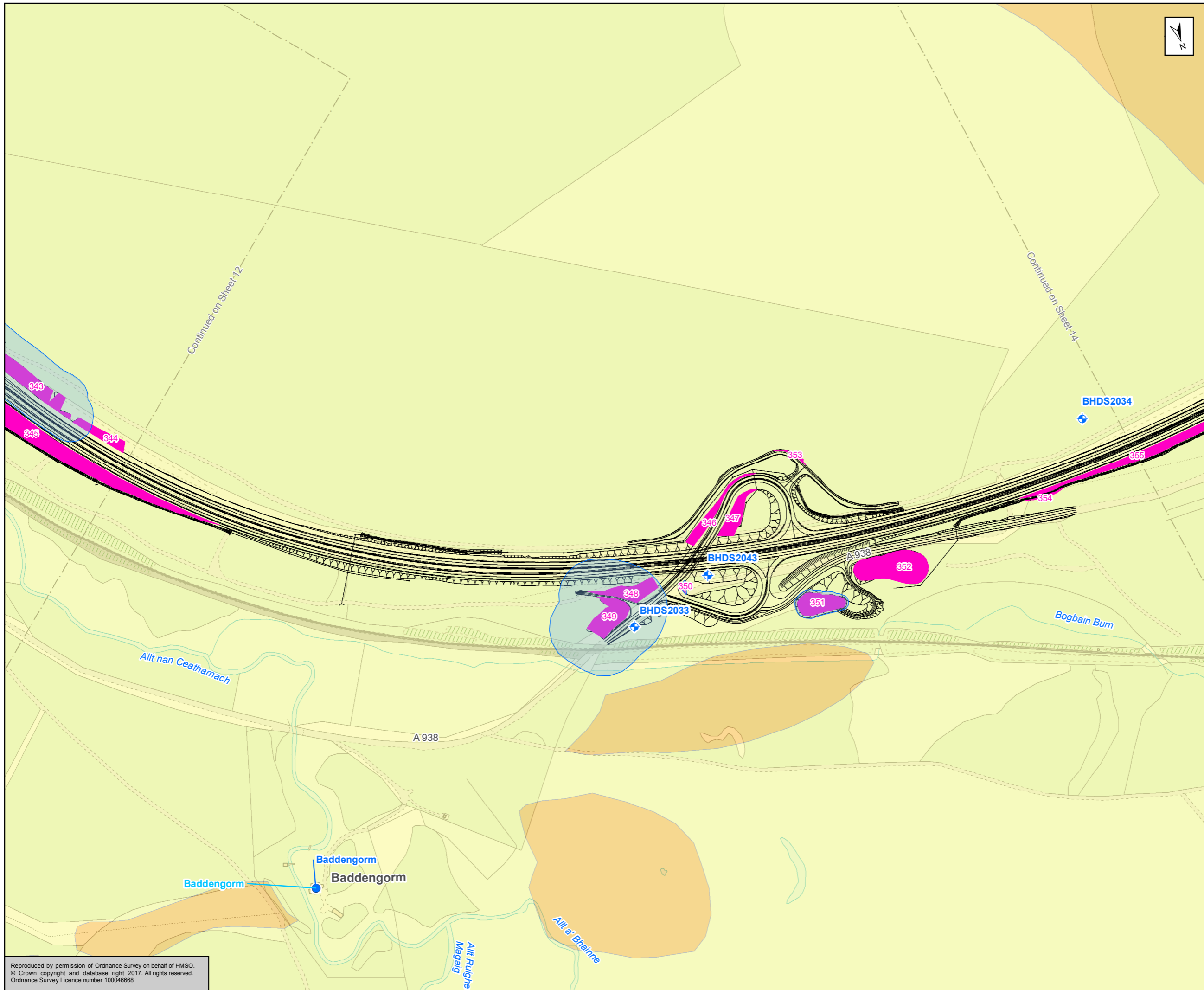
A9
DUALLING
PERTH TO INVERNESS
Dalraddy to Stochd

ATKINS mouchel

Figure 10.8
Hydrogeology
Sheet 12 of 17

Scale	1:5,000	Drawn	MM	Checked	UC	Approved	ROB	Authorised	SB
Document Number	A9P11-AMJ-EGT-H_ZZZZZ_XX-DR-GI-0328							Revision	P04
Project	Originator	Volume							
Location	Type	Role	Number						

Reproduced by permission of Ordnance Survey on behalf of HMSO.
© Crown copyright and database right 2017. All rights reserved.
Ordnance Survey Licence number 100046668



Proposed Scheme

Cuttings

Groundwater Outfall Locations

Private Water Supplies

- Property confirmed as supplied by Groundwater Source
- Groundwater source location

Stage 2 GI Locations

- Borehole without Groundwater Level
- Borehole with Groundwater Level

Calculated Radius of Influence

- Estimated Groundwater Level
- Known Groundwater Level

Groundwater Vulnerability

- 5
- 4a
- 4b
- 3
- 2
- Not available

Kilometres
0 0.1 0.2

Status: FINAL Subtitle: B

Client: **TRANSPORT SCOTLAND**
COMHDHAIL ALBA

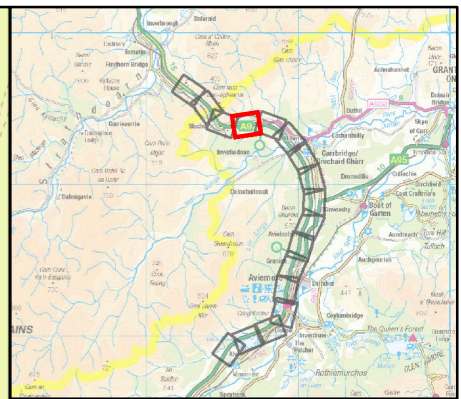
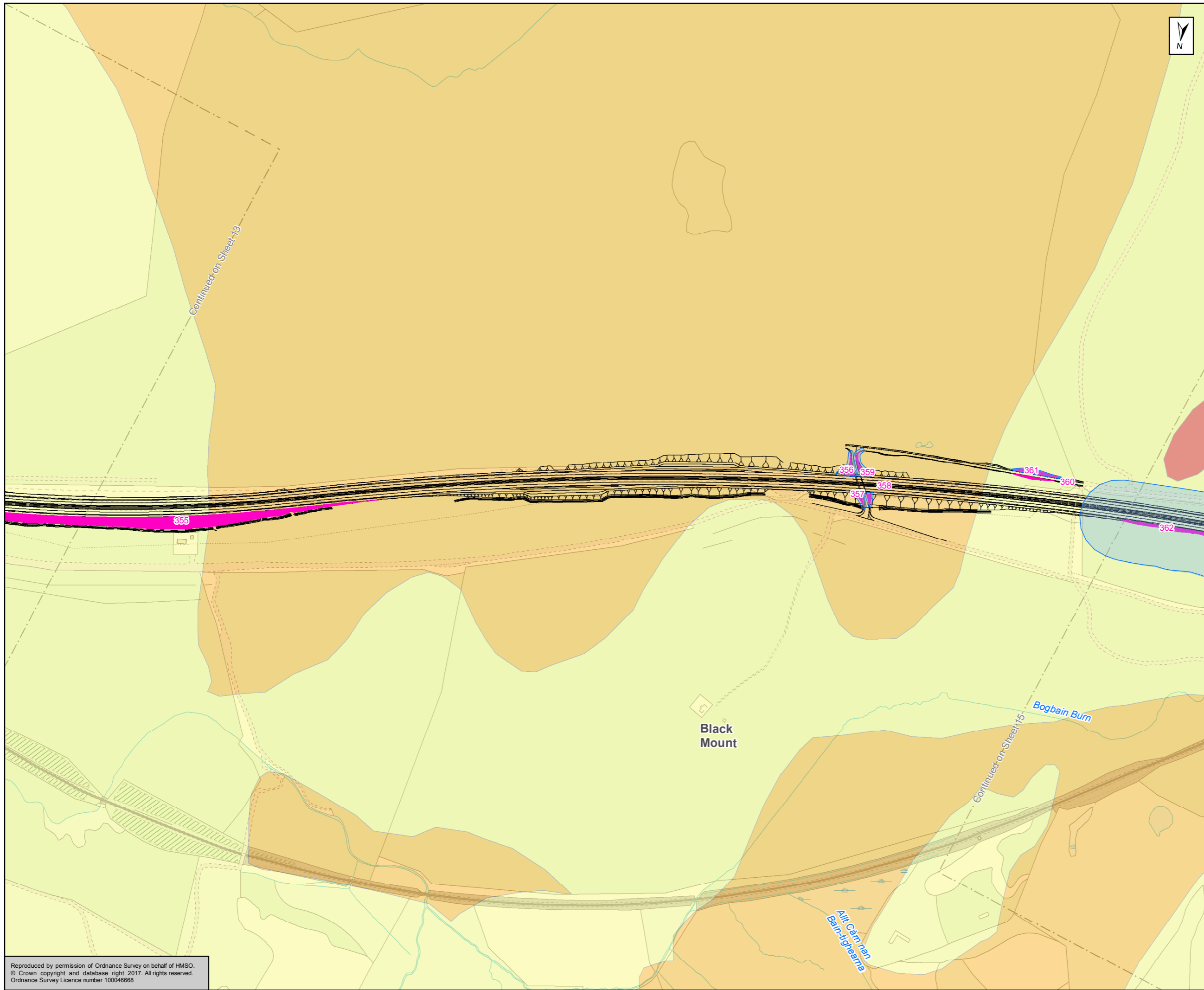
A9
DUALING
PERTH TO INVERNESS
Dalraddy to Slochd

ATKINS mouchel

Figure 10.8
Hydrogeology
Sheet 13 of 17

Scale: 1:5,000	Drawn: MM	Checked: UC	Approved: ROB	Authorised: SB
Document Number: A9P11-AMJ-EGT-H_ZZZZZ_XX-DR-GI-0329	Project: A9P11-AMJ-EGT-H_ZZZZZ_XX-DR-GI-0329	Originator:	Volume:	Revision: P04
Location:	Type:	Role:	Number:	

Reproduced by permission of Ordnance Survey on behalf of HMSO.
© Crown copyright and database right 2017. All rights reserved.
Ordnance Survey Licence number 100046668



Proposed Scheme

Cuttings

Groundwater Outfall Locations

Private Water Supplies

- Property confirmed as supplied by Groundwater Source
- Groundwater source location

Stage 2 GI Locations

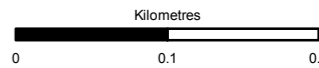
- Borehole without Groundwater Level
- Borehole with Groundwater Level

Calculated Radius of Influence

- Estimated Groundwater Level
- Known Groundwater Level

Groundwater Vulnerability

- 5
- 4a
- 4b
- 3
- 2
- Not available



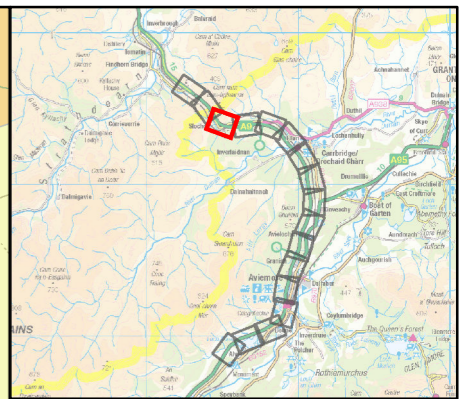
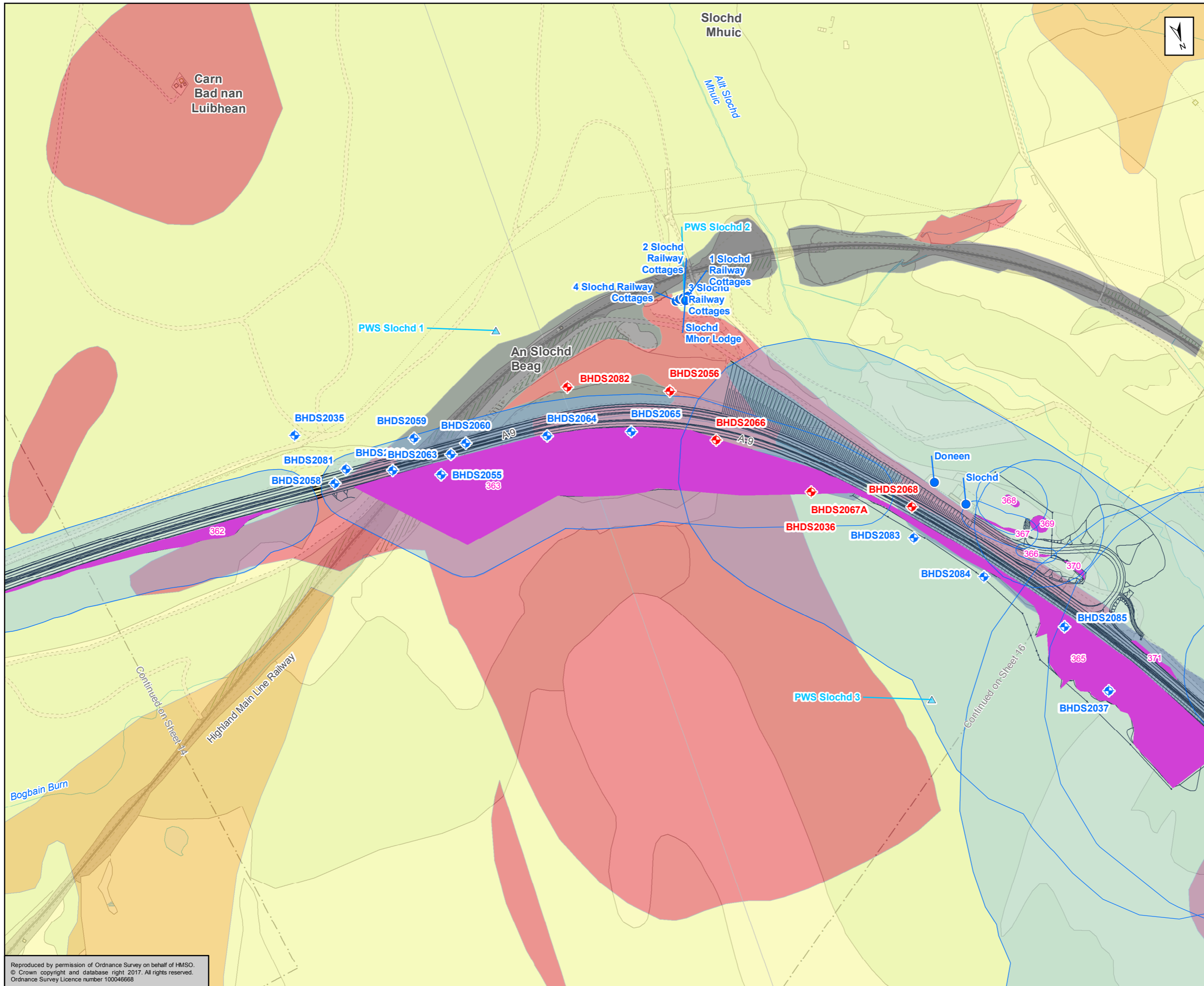
Status	FINAL	Subsidiary	B
--------	-------	------------	---



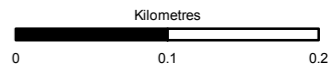
Figure 10.8
Hydrogeology
Sheet 14 of 17

Scale	1:5,000	Drawn	MM	Checked	UC	Approved	ROB	Authorised	SB
Document Number	A9P11-AMJ-EGT-H_ZZZZZ_XX-DR-GI-0330							Revision	P04
Project	Originator	Volume							
Location	Type	Role	Number						

Reproduced by permission of Ordnance Survey on behalf of HMSO.
© Crown copyright and database right 2017. All rights reserved.
Ordnance Survey Licence number 100046668



~ Proposed Scheme
 ■ Cuttings
 ● Groundwater Outfall Locations
Private Water Supplies
 ● Property confirmed as supplied by Groundwater Source
 ▲ Groundwater source location
Stage 2 GI Locations
 ◆ Borehole without Groundwater Level
 ◆ Borehole with Groundwater Level
Calculated Radius of Influence
 ■ Estimated Groundwater Level
 ■ Known Groundwater Level
Groundwater Vulnerability
 ■ 5
 ■ 4a
 ■ 4b
 ■ 3
 ■ 2
 ■ Not available



Status	FINAL	Subsidiary	B
--------	-------	------------	---

TRANSPORT SCOTLAND
 COMHDHAIL ALBA

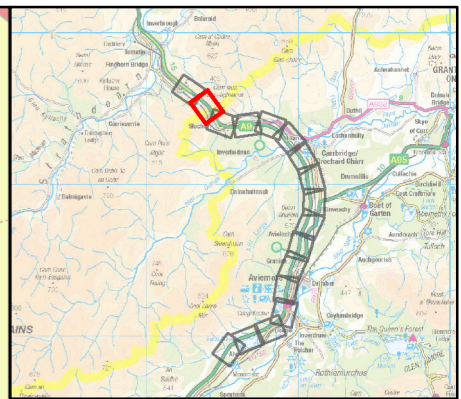
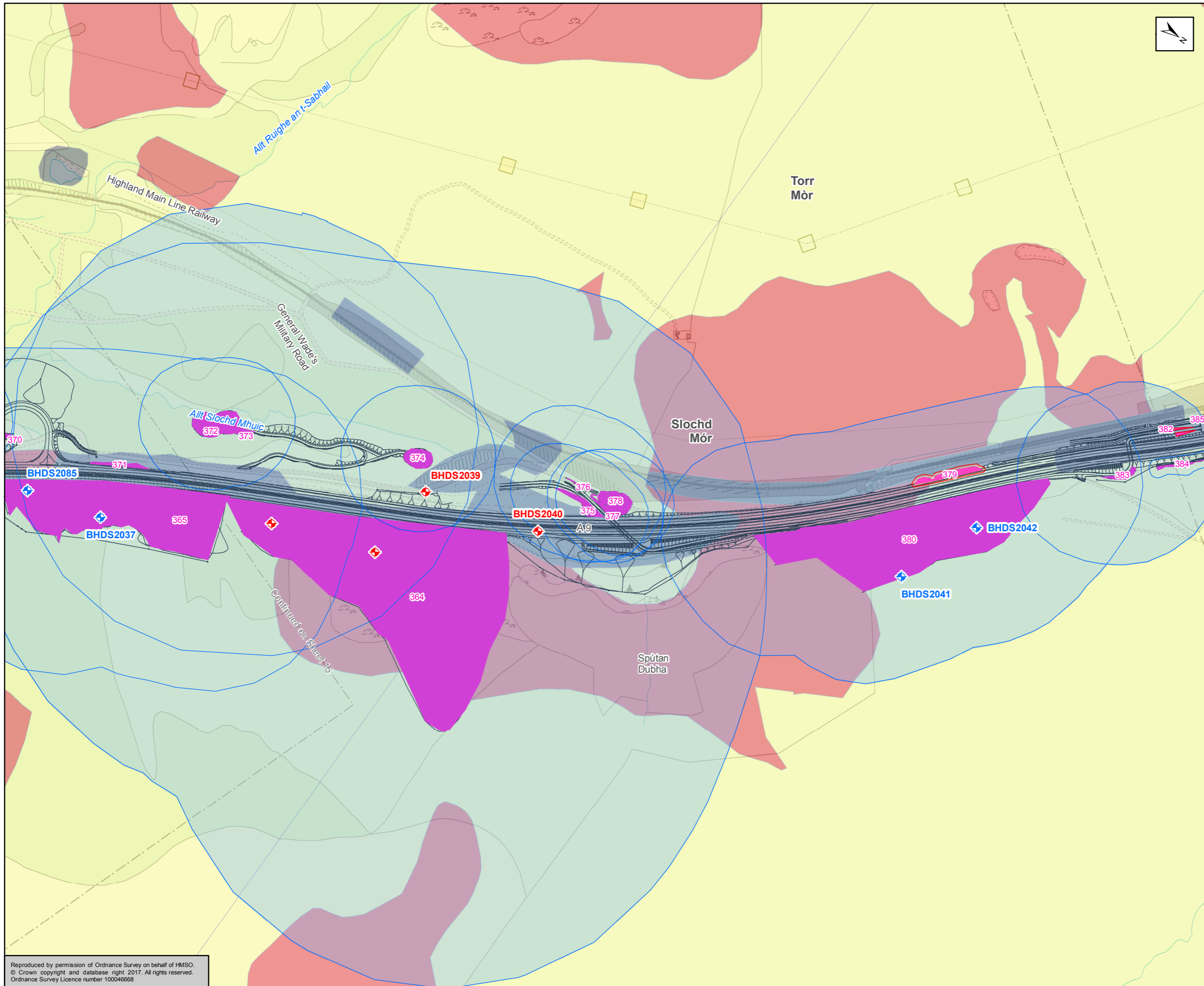
A9
 DUALLING
 PERTH TO INVERNESS
 Dalraddy to Slochd

ATKINS mouchel

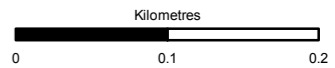
Figure 10.8
 Hydrogeology
 Sheet 15 of 17

Scale	1:5,000	Drawn	MM	Checked	UC	Approved	ROB	Authorised	SB
Document Number	A9P11-AMJ-EGT-H_ZZZZZ_XX-DR-GI-0331							Revision	P04
Project	Originator	Volume							
Location	Type	Role	Number						

Reproduced by permission of Ordnance Survey on behalf of HMSO.
 © Crown copyright and database right 2017. All rights reserved.
 Ordnance Survey Licence number 100046668



Proposed Scheme
 Cuttings
 Groundwater Outfall Locations
Private Water Supplies
 Property confirmed as supplied by Groundwater Source
 Groundwater source location
Stage 2 GI Locations
 Borehole without Groundwater Level
 Borehole with Groundwater Level
Calculated Radius of Influence
 Estimated Groundwater Level
 Known Groundwater Level
Groundwater Vulnerability
 5
 4a
 4b
 3
 2
 Not available



Status	FINAL	Subsidiary	B
--------	-------	------------	---

TRANSPORT SCOTLAND
 COMHDHAIL ALBA

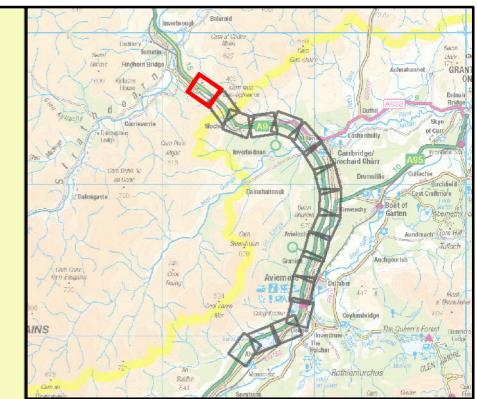
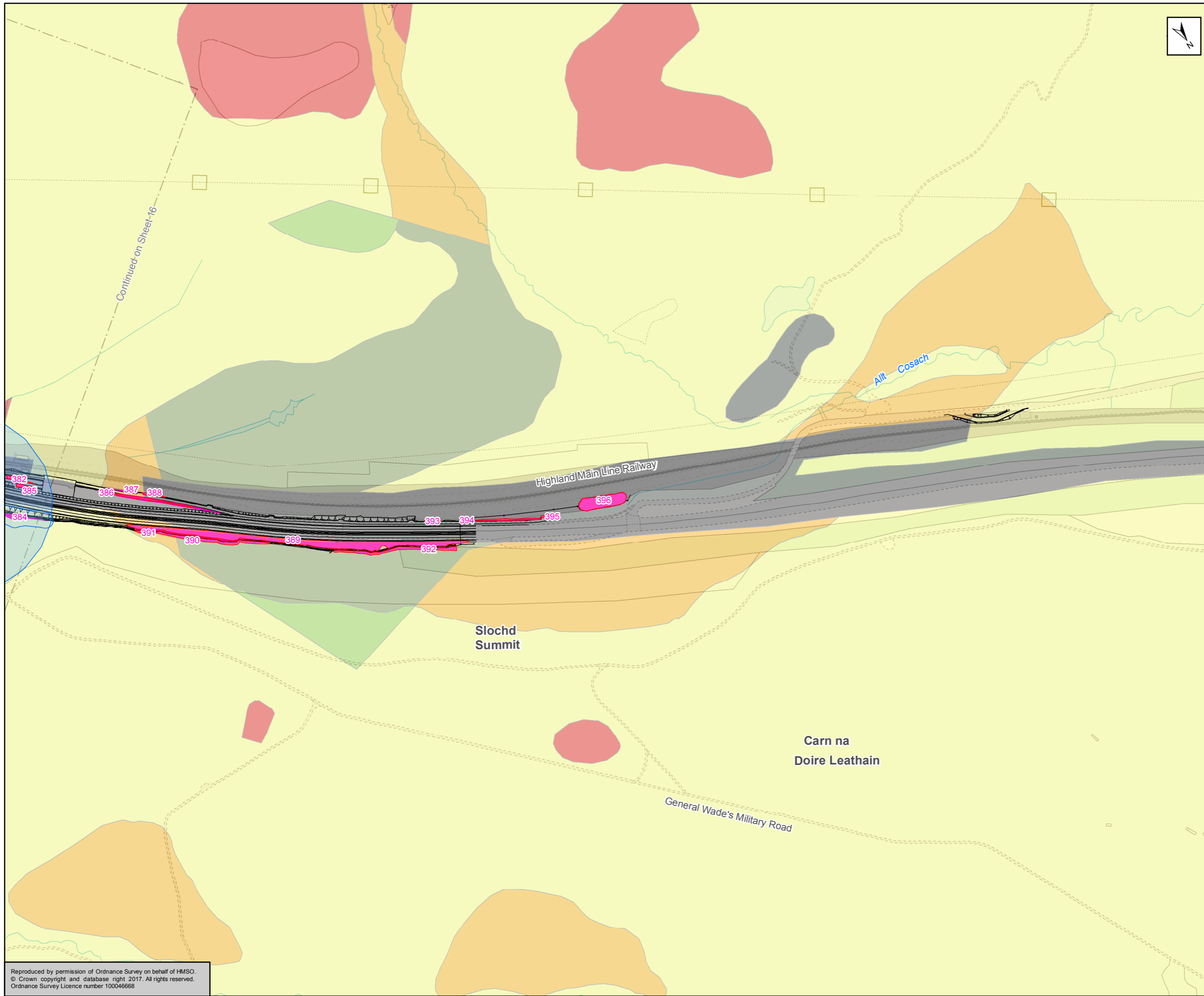
A9
 DUALLING
 PERTH TO INVERNESS
 Dalraddy to Slochd

ATKINS mouchel

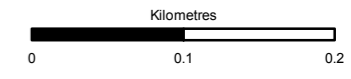
Figure 10.8
 Hydrogeology
 Sheet 16 of 17

Scale	1:5,000	Drawn	MM	Checked	UC	Approved	ROB	Authorised	SB
Document Number	A9P11-AMJ-EGT-H_ZZZZZ_XX-DR-GI-0332							Revision	P04
Project	Originator	Volume							
Location	Type	Role	Number						

Reproduced by permission of Ordnance Survey on behalf of HMSO.
 © Crown copyright and database right 2017. All rights reserved.
 Ordnance Survey Licence number 100046668



Proposed Scheme
 Cuttings
 Groundwater Outfall Locations
Private Water Supplies
 Property confirmed as supplied by Groundwater Source
 Groundwater source location
Stage 2 GI Locations
 Borehole without Groundwater Level
 Borehole with Groundwater Level
Calculated Radius of Influence
 Estimated Groundwater Level
 Known Groundwater Level
Groundwater Vulnerability
 5
 4a
 4b
 3
 2
 Not available



Status	FINAL	Subsidiary	B
--------	-------	------------	---



Figure 10.8
Hydrogeology
Sheet 17 of 17

Scale	1:5,000	Drawn	MM	Checked	UC	Approved	ROB	Authorised	SB
Document Number	A9P11-AMJ-EGT-H_ZZZZ_XX-DR-GI-0333							Revision	P04
Project	Originator	Volume							
Location	Type	Role	Number						

Reproduced by permission of Ordnance Survey on behalf of HMSO.
© Crown copyright and database right 2017. All rights reserved.
Ordnance Survey Licence number 100046668