

Proposed Scheme
 250m Study Area
 NVC Target Note

Dominant NVC Type

- Grassland - Calcifugous and Fern
- Grassland - Calcicolous
- Grassland - Mesotrophic
- Heath - Dry
- Heath - Wet
- Mires, Flushes and Springs
- Swamp and Tall-herb Fen
- Open-habitat
- Woodland
- Woodland - Scrub
- Non-NVC Habitat
- Not Surveyed
- Unable to Be Classified from Aerial

See table 5.1 in Appendix 12.2 for key to NVC codes.

Kilometres
 0 0.1 0.2

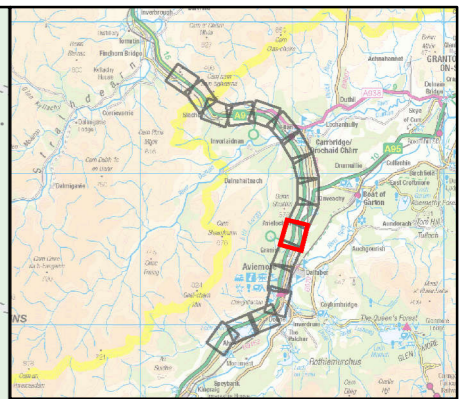
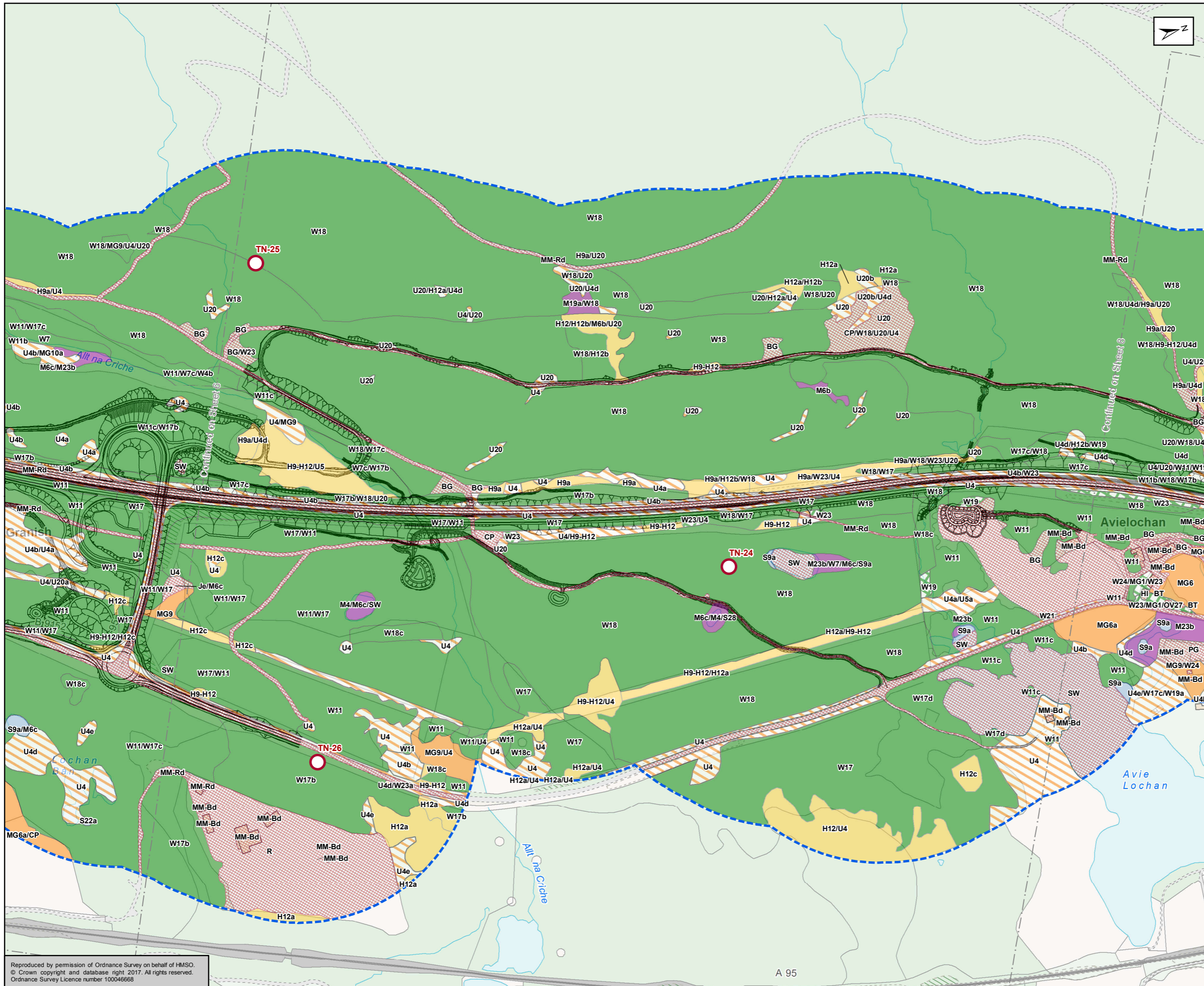
| | | | |
|--------|-------|------------|---|
| Status | FINAL | Subsidiary | B |
|--------|-------|------------|---|



Figure 12.4
 National Vegetation
 Classification Survey
 Sheet 6 of 17

| | | | | | | | | | |
|-----------------|-------------------------------------|--------|----|---------|----|----------|-----|------------|-----|
| Scale | 1:5,000 | Drawn | RM | Checked | SK | Approved | ROB | Authorised | SB |
| Document Number | A9P11-AMJ-EBD-H_ZZZZZ_XX-DR-GI-0033 | | | | | | | Revision | P04 |
| Project | Originator | Volume | | | | | | | |
| Location | Type | Role | | | | | | | |

Reproduced by permission of Ordnance Survey on behalf of HMSO.
 © Crown copyright and database right 2017. All rights reserved.
 Ordnance Survey Licence number 100046668



Proposed Scheme
 250m Study Area
 NVC Target Note

Dominant NVC Type

- Grassland - Calcifugous and Fern
- Grassland - Calcicolous
- Grassland - Mesotrophic
- Heath - Dry
- Heath - Wet
- Mires, Flushes and Springs
- Swamp and Tall-herb Fen
- Open-habitat
- Woodland
- Woodland - Scrub
- Non-NVC Habitat
- Not Surveyed
- Unable to Be Classified from Aerial

See table 5.1 in Appendix 12.2 for key to NVC codes.

Kilometres
 0 0.1 0.2

| | |
|----------|---|
| Scale | 1:5,000 |
| Status | FINAL |
| Client | TRANSPORT SCOTLAND COMHDHAIL ALBA |
| Contract | A9 DUALING PERTH TO INVERNESS Dalraddy to Stochd |
| Revision | P04 |

TRANSPORT SCOTLAND
COMHDHAIL ALBA

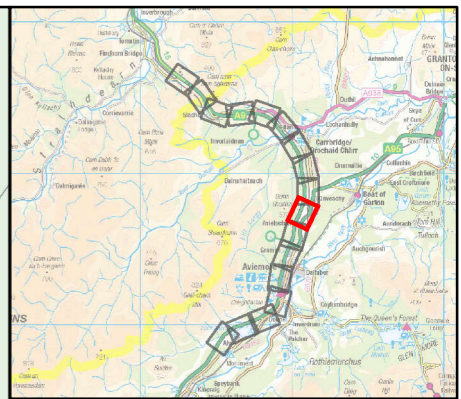
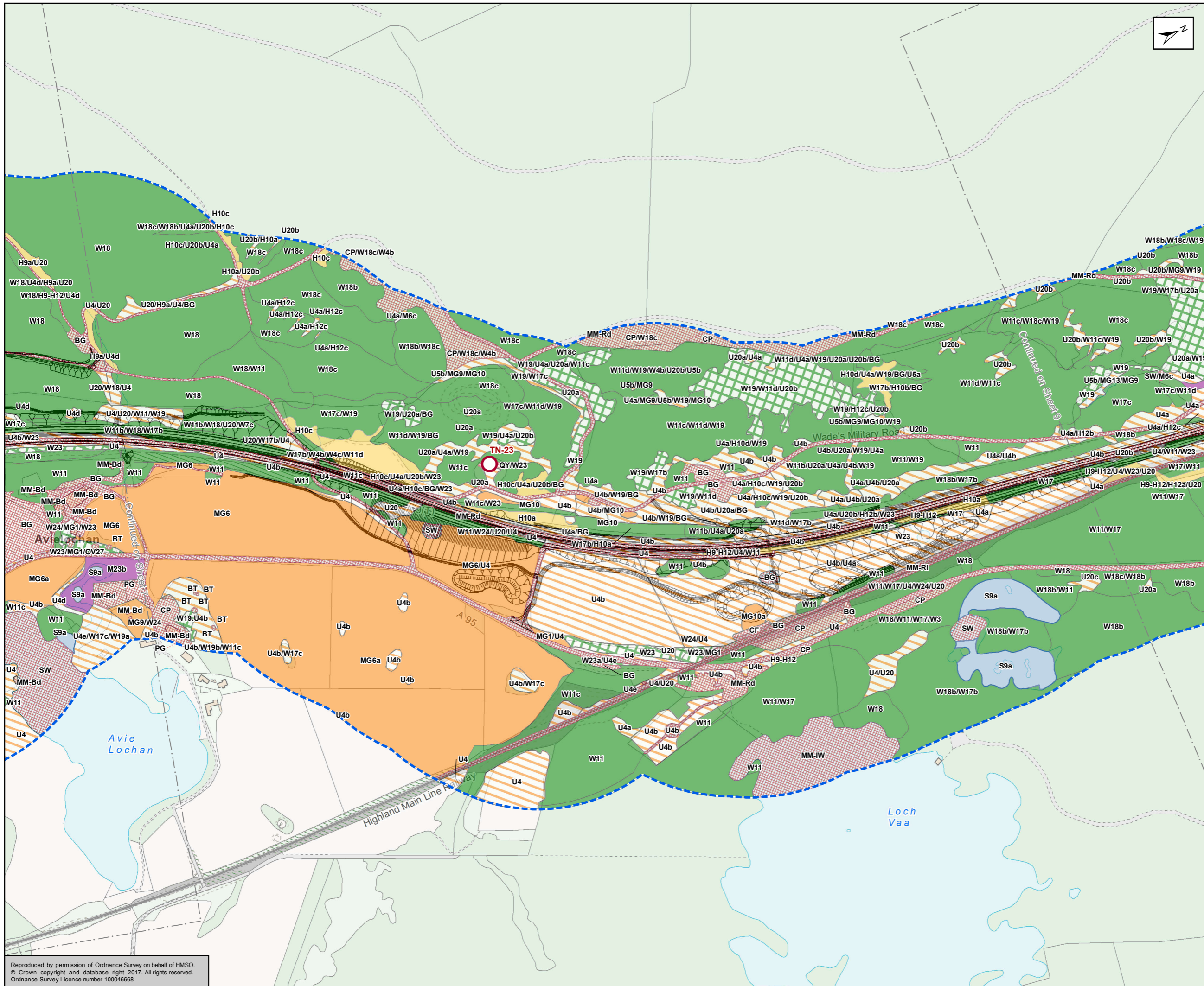
A9 DUALING
PERTH TO INVERNESS
Dalraddy to Stochd

ATKINS mouchel

Figure 12.4
 National Vegetation
 Classification Survey
 Sheet 7 of 17

| | | | | | | | | | | |
|-----------------|-------------------------------------|-------|----|---------|----|----------|-----|------------|----------|-----|
| Scale | 1:5,000 | Drawn | RM | Checked | SK | Approved | ROB | Authorised | SB | |
| Document Number | A9P11-AMJ-EBD-H_ZZZZZ_XZ-DR-GI-0034 | | | | | | | | Revision | P04 |
| Project | A9P11-AMJ-EBD-H_ZZZZZ_XZ-DR-GI-0034 | | | | | | | | Location | |
| Originator | | | | | | | | | Type | |
| Volume | | | | | | | | | Role | |
| | | | | | | | | | Number | |

Reproduced by permission of Ordnance Survey on behalf of HMSO.
 © Crown copyright and database right 2017. All rights reserved.
 Ordnance Survey Licence number 100046668



Proposed Scheme

250m Study Area

NVC Target Note

Dominant NVC Type

- Grassland - Calcifugous and Fern
- Grassland - Calcicolous
- Grassland - Mesotrophic
- Heath - Dry
- Heath - Wet
- Mires, Flushes and Springs
- Swamp and Tall-herb Fen
- Open-habitat
- Woodland
- Woodland - Scrub
- Non-NVC Habitat
- Not Surveyed
- Unable to Be Classified from Aerial

See table 5.1 in Appendix 12.2 for key to NVC codes.

Kilometres

0 0.1 0.2

Status: FINAL

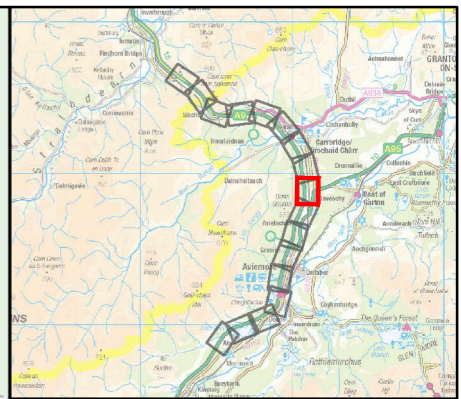
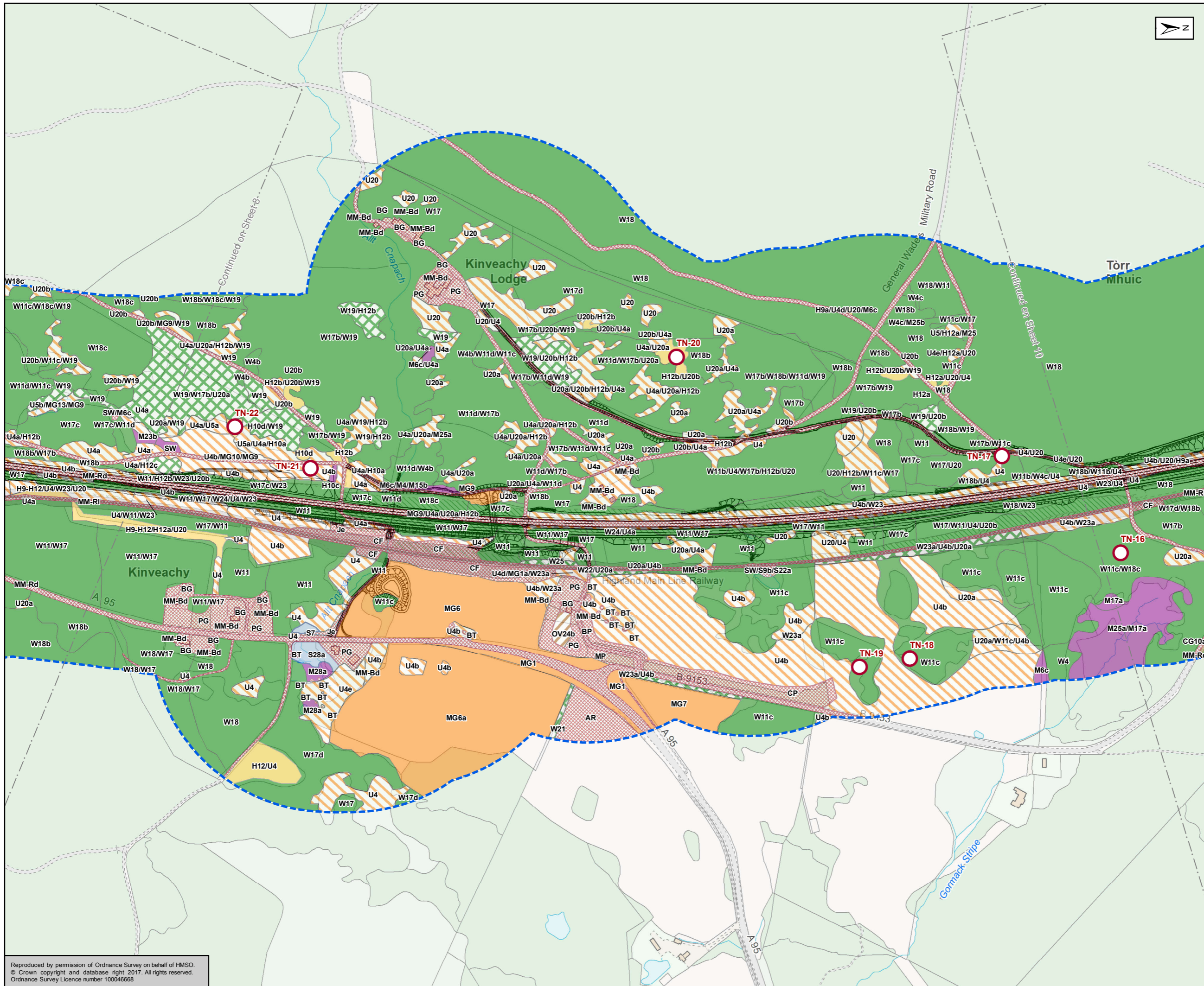
Subsidiary: B



Figure 12.4
National Vegetation
Classification Survey
Sheet 8 of 17

| | | | | | | | | | |
|-----------------|-------------------------------------|--------|--------|---------|----|----------|-----|------------|-----|
| Scale | 1:5,000 | Drawn | RM | Checked | SK | Approved | ROB | Authorised | SB |
| Document Number | A9P11-AMJ-EBD-H_ZZZZZ_XZ-DR-GI-0035 | | | | | | | Revision | P04 |
| Project | Originator | Volume | | | | | | | |
| Location | Type | Role | Number | | | | | | |

Reproduced by permission of Ordnance Survey on behalf of HMSO.
© Crown copyright and database right 2017. All rights reserved.
Ordnance Survey Licence number 100046668



Proposed Scheme
 250m Study Area
 NVC Target Note

Dominant NVC Type

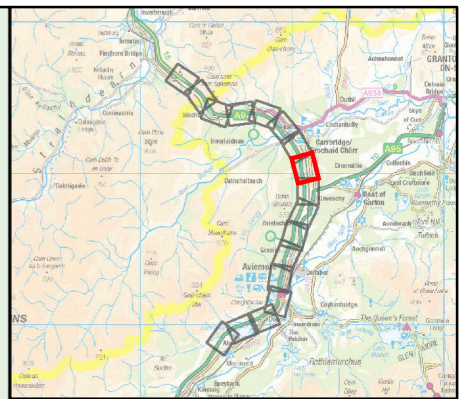
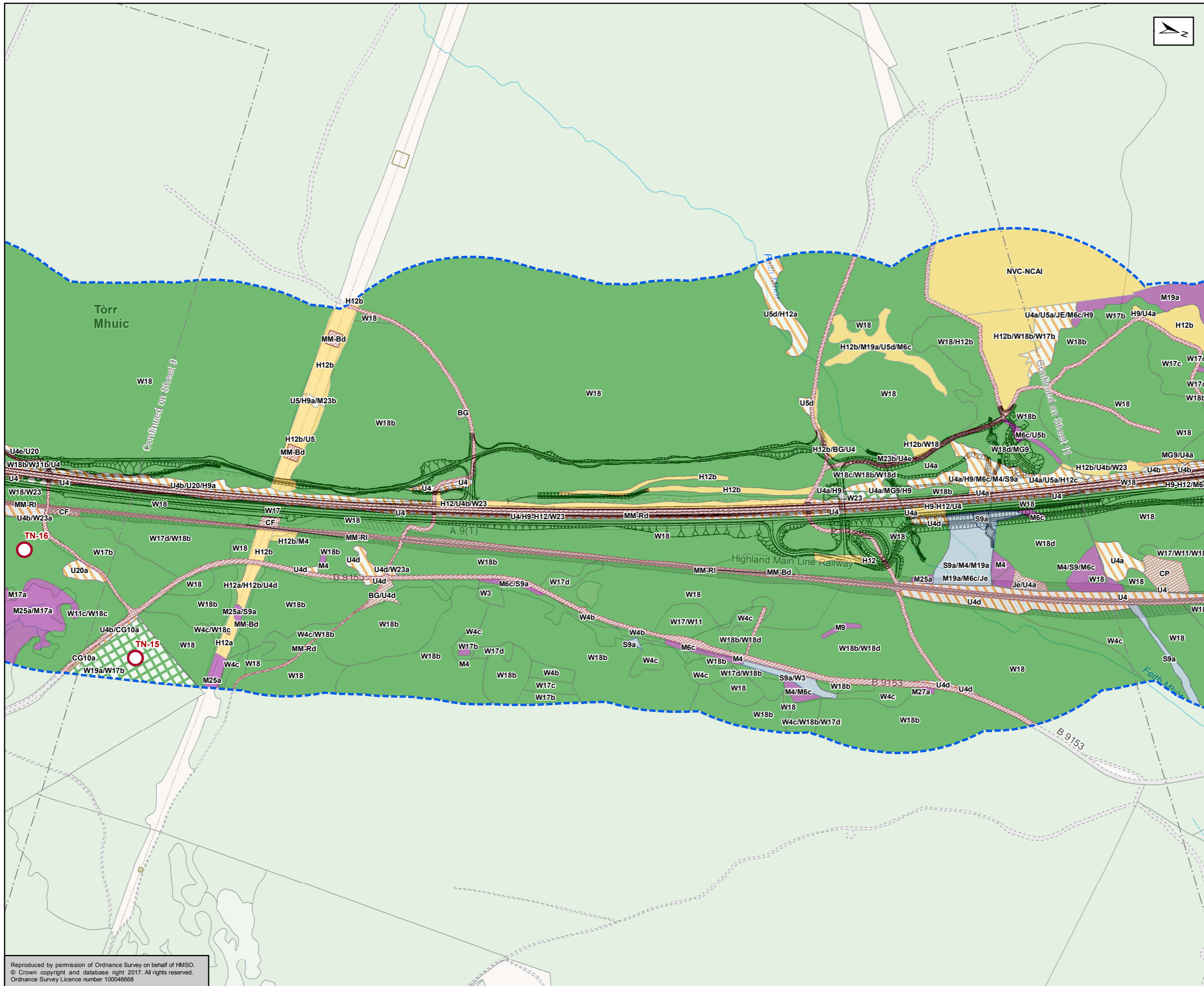
- Grassland - Calcifugous and Fern
- Grassland - Calcicolous
- Grassland - Mesotrophic
- Heath - Dry
- Heath - Wet
- Mires, Flushes and Springs
- Swamp and Tall-herb Fen
- Open-habitat
- Woodland
- Woodland - Scrub
- Non-NVC Habitat
- Not Surveyed
- Unable to Be Classified from Aerial

See table 5.1 in Appendix 12.2 for key to NVC codes.

Kilometres
 0 0.1 0.2

| | | | |
|-----------------|--|------------|--------|
| Status | FINAL | Subsidiary | B |
| Client | TRANSPORT SCOTLAND COMHDHAIL ALBA | | |
| | A9 DUALLING PERTH TO INVERNESS Dalraddy to Stochd | | |
| Title | Figure 12.4 National Vegetation Classification Survey Sheet 9 of 17 | | |
| Scale | 1:5,000 | Drawn | RM |
| Checked | SK | Approved | ROB |
| Authorised | SB | | |
| Document Number | Project | | Volume |
| | A9P11-AMJ-EBD-H_ZZZZZ_XX-DR-GI-0036 | | P04 |
| Location | Type | Role | Number |

Reproduced by permission of Ordnance Survey on behalf of HMSO.
 © Crown copyright and database right 2017. All rights reserved.
 Ordnance Survey Licence number 100046668



Proposed Scheme
 250m Study Area
 NVC Target Note

Dominant NVC Type

- Grassland - Calcifugous and Fern
- Grassland - Calcicolous
- Grassland - Mesotrophic
- Heath - Dry
- Heath - Wet
- Mires, Flushes and Springs
- Swamp and Tall-herb Fen
- Open-habitat
- Woodland
- Woodland - Scrub
- Non-NVC Habitat
- Not Surveyed
- Unable to Be Classified from Aerial

See table 5.1 in Appendix 12.2 for key to NVC codes.

Kilometres
0 0.1 0.2

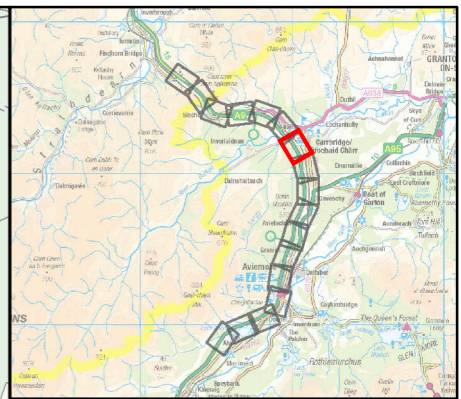
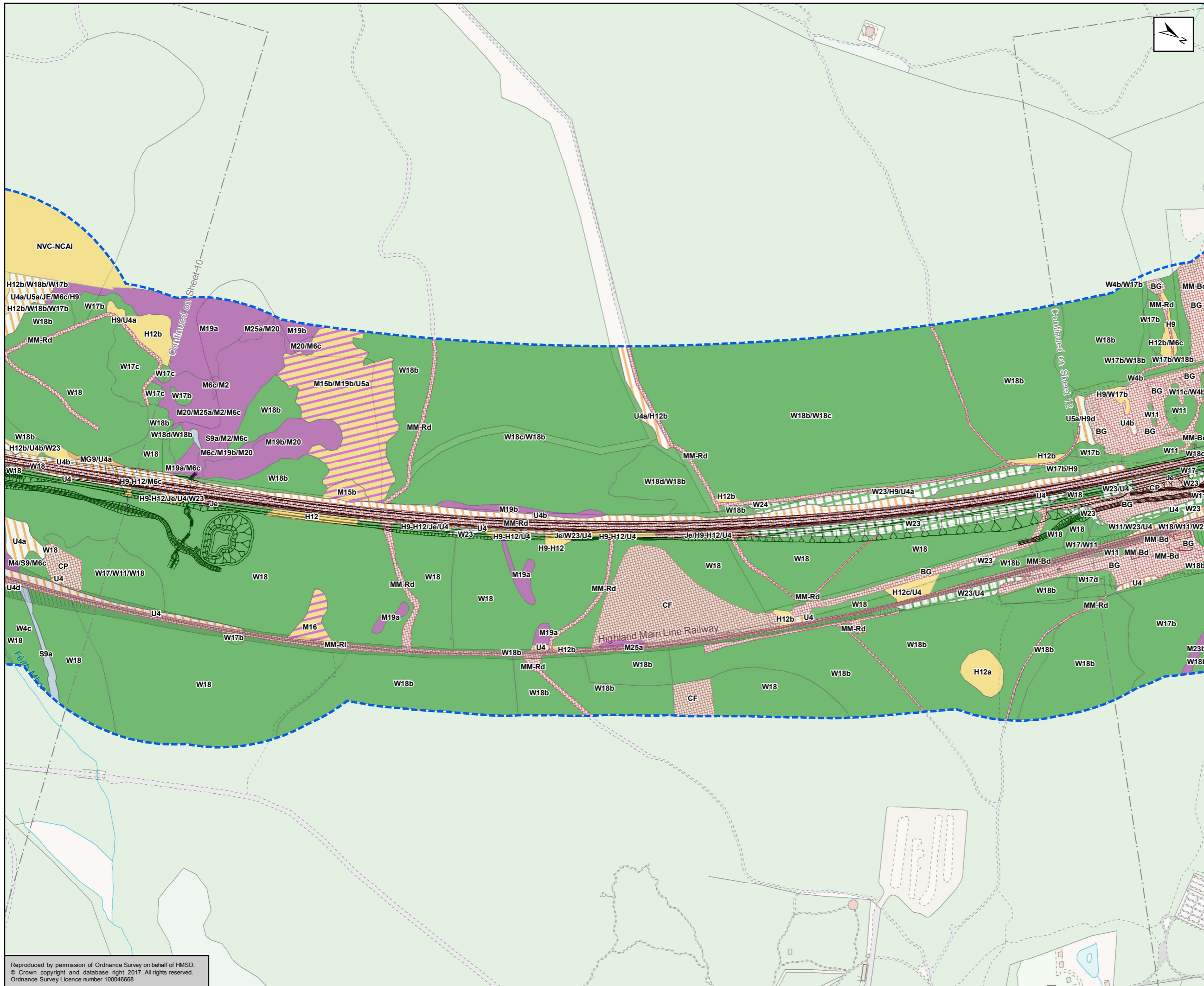
| | | | |
|--------|-------|------------|---|
| Status | FINAL | Subsidiary | B |
|--------|-------|------------|---|



Figure 12.4
 National Vegetation
 Classification Survey
 Sheet 10 of 17

| | | | | | | | | | |
|-----------------|-------------------------------------|--------|----|---------|----|----------|-----|------------|-----|
| Scale | 1:5,000 | Drawn | RM | Checked | SK | Approved | ROB | Authorised | SB |
| Document Number | A9P11-AMJ-EBD-H_ZZZZZ_XX-DR-GI-0037 | | | | | | | Revision | P04 |
| Project | Originator | Volume | | | | | | | |
| Location | Type | Role | | | | | | | |

Reproduced by permission of Ordnance Survey on behalf of HMSO.
 © Crown copyright and database right 2017. All rights reserved.
 Ordnance Survey Licence number 100046668



Proposed Scheme
 250m Study Area
 NVC Target Note

Dominant NVC Type

- Grassland - Calcifugous and Fern
- Grassland - Calcicolous
- Grassland - Mesotrophic
- Heath - Dry
- Heath - Wet
- Mires, Flushes and Springs
- Swamp and Tall-herb Fen
- Open-habitat
- Woodland
- Woodland - Scrub
- Non-NVC Habitat
- Not Surveyed
- Unable to Be Classified from Aerial

See table 5.1 in Appendix 12.2 for key to NVC codes.

Kilometres
 0 0.1 0.2

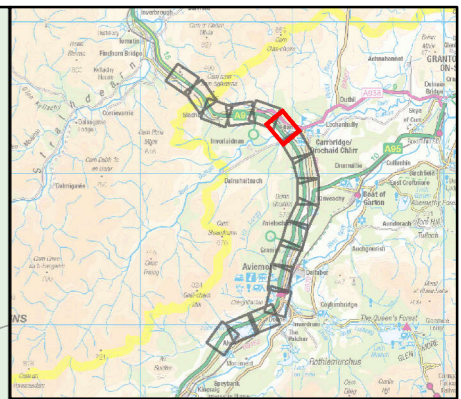
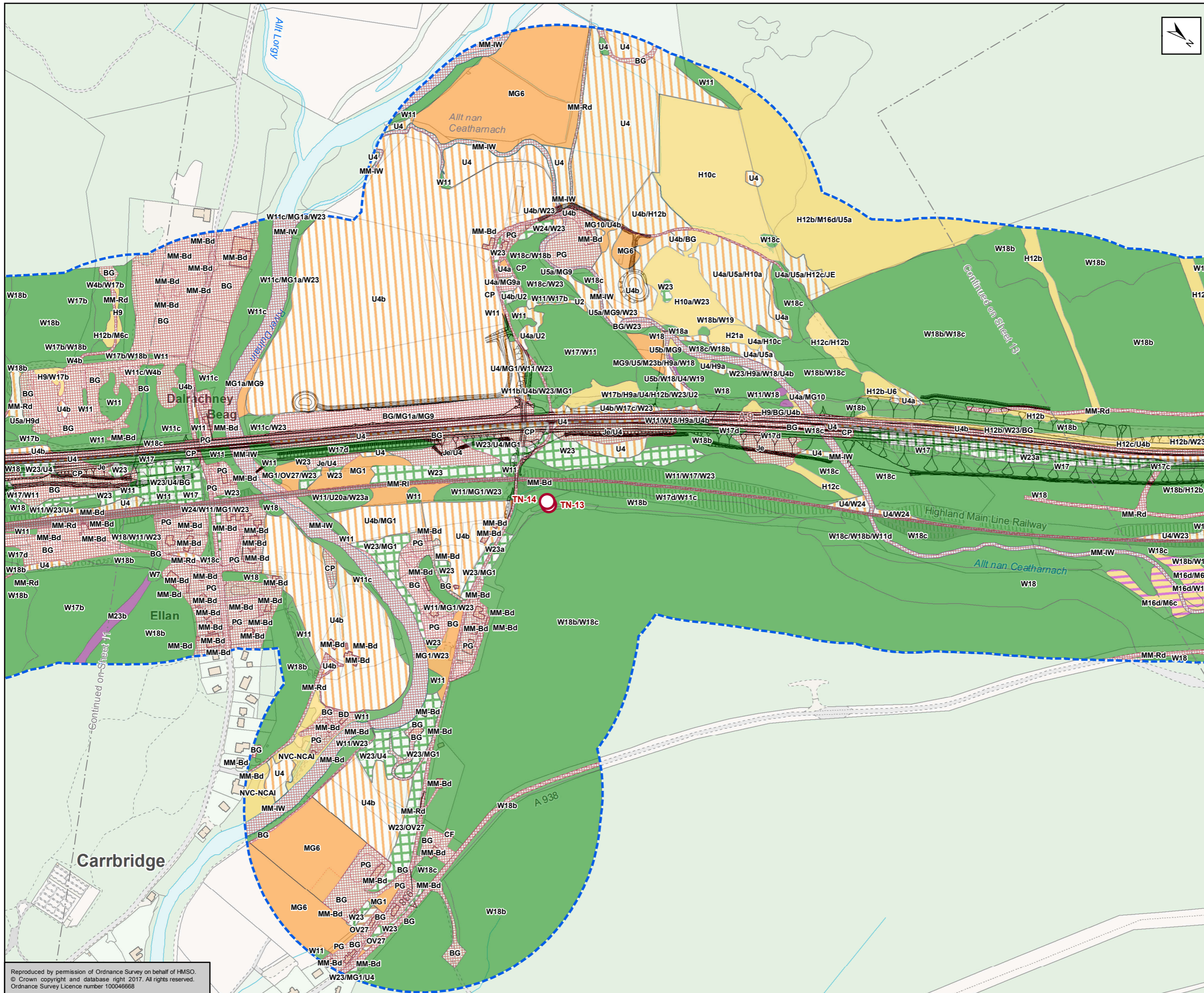
| | | | |
|--------|-------|------------|---|
| Status | FINAL | Subsidiary | B |
|--------|-------|------------|---|



Figure 12.4
 National Vegetation
 Classification Survey
 Sheet 11 of 17

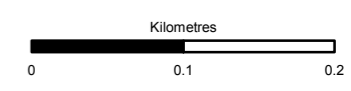
| | | | | | | | | | |
|-----------------|-------------------------------------|--------|----|---------|----|----------|-----|------------|-----|
| Scale | 1:5,000 | Drawn | RM | Checked | SK | Approved | ROB | Authorised | SB |
| Document Number | A9P11-AMJ-EBD-H_ZZZZZ_XZ-DR-GI-0038 | | | | | | | Revision | P04 |
| Project | Originator | Volume | | | | | | | |
| Location | Type | Role | | | | | | | |

Reproduced by permission of Ordnance Survey on behalf of HMSO.
 © Crown copyright and database right 2017. All rights reserved.
 Ordnance Survey Licence number 100046668



- Proposed Scheme
- 250m Study Area
- NVC Target Note
- Dominant NVC Type**
- Grassland - Calcifugous and Fern
- Grassland - Calcicolous
- Grassland - Mesotrophic
- Heath - Dry
- Heath - Wet
- Mires, Flushes and Springs
- Swamp and Tall-herb Fen
- Open-habitat
- Woodland
- Woodland - Scrub
- Non-NVC Habitat
- Not Surveyed
- Unable to Be Classified from Aerial

See table 5.1 in Appendix 12.2 for key to NVC codes.



| | | | |
|--------|-------|------------|---|
| Status | FINAL | Subsidiary | B |
|--------|-------|------------|---|



Figure 12.4
National Vegetation
Classification Survey
Sheet 12 of 17

| | | | | | | | | | |
|-----------------|-------------------------------------|--------|----|---------|----|----------|-----|------------|-----|
| Scale | 1:5,000 | Drawn | RM | Checked | SK | Approved | ROB | Authorised | SB |
| Document Number | A9P11-AMJ-EBD-H_ZZZZZ_XX-DR-GI-0039 | | | | | | | Revision | P04 |
| Project | Originator | Volume | | | | | | | |
| Location | Type | Role | | | | | | | |

Reproduced by permission of Ordnance Survey on behalf of HMSO.
© Crown copyright and database right 2017. All rights reserved.
Ordnance Survey Licence number 100046668