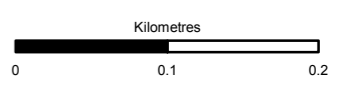


- Proposed Scheme
 250m Study Area
Dominant Annex 1 Habitat
 Alkaline Fen
 Alluvial Forests with *Alnus glutinosa* and *Fraxinus excelsior*
 Blanket Bog
 Caledonian Forest
 European Dry Heath
Juniperus communis formation on Heath or Calcareous Grassland
 Northern Atlantic Wet Heath with *Erica tetralix*
 Northern Atlantic Wet Heaths with *Erica tetralix* and Blanket Bog
 Species-Rich *Nardus* Grassland, on Siliceous Substrates in Mountain Areas
 Transition Mire and Quaking Bog
 Unable to be Classified from Aerial Imagery

Labels relate to corresponding NVC code (e.g. M20)
 Areas are displayed according to the dominant Annex 1 habitat type. Due to habitat mosaics many areas may only contain a small percentage of Annex 1 habitat, whereas others may contain multiple Annex 1 habitats. Please cross-reference the NVC types in Annex 1 areas to Technical Appendix 12.2 for further information.



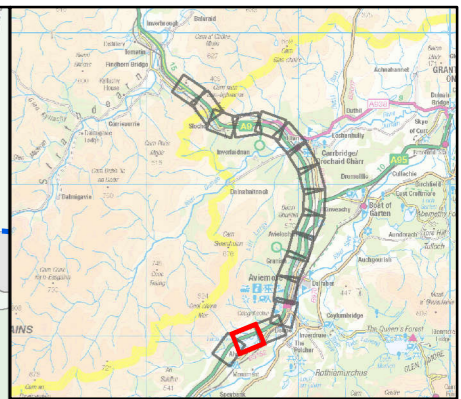
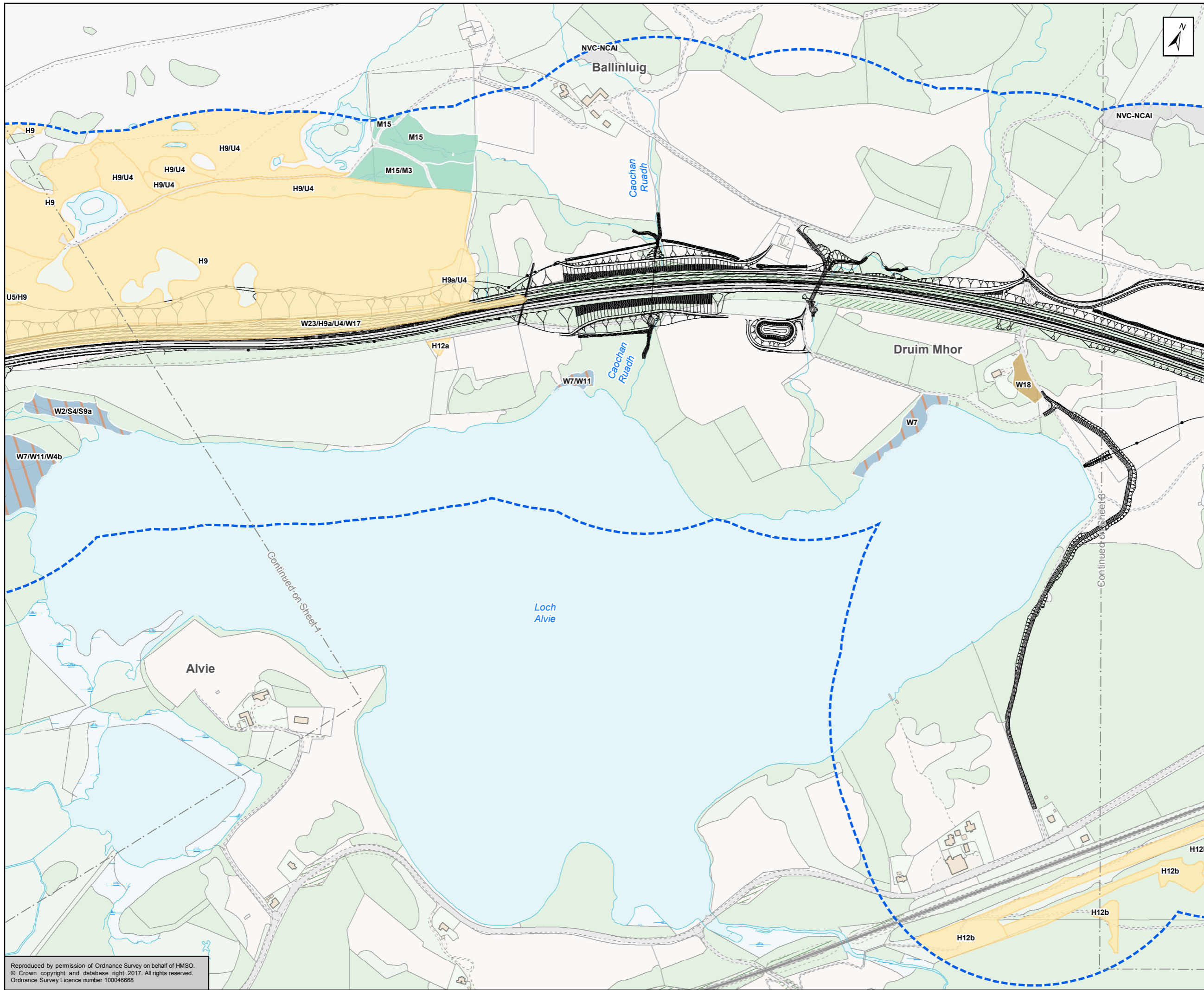
Status	FINAL	Subsidiary	B
--------	-------	------------	---



Figure 12.5
 Annex 1 Habitat
 Sheet 1 of 17

Scale	1:5,000	Drawn	RM	Checked	DK	Approved	ROB	Authorised	SB
Document Number	Project		Originator		Volume		Revision		
A9P11-AMJ-EBD-H_ZZZZZ_XZ-DR-GI-0071	A9P11-AMJ-EBD-H_ZZZZZ_XZ-DR-GI-0071		A9P11-AMJ-EBD-H_ZZZZZ_XZ-DR-GI-0071		A9P11-AMJ-EBD-H_ZZZZZ_XZ-DR-GI-0071		P04		
Location	Type	Role	Number						

Reproduced by permission of Ordnance Survey on behalf of HMSO.
 © Crown copyright and database right 2017. All rights reserved.
 Ordnance Survey Licence number 100046668



- Proposed Scheme
 250m Study Area
Dominant Annex 1 Habitat
 Alkaline Fen
 Alluvial Forests with *Alnus glutinosa* and *Fraxinus excelsior*
 Blanket Bog
 Caledonian Forest
 European Dry Heath
Juniperus communis formation on Heath or Calcareous Grassland
 Northern Atlantic Wet Heath with *Erica tetralix*
 Northern Atlantic Wet Heaths with *Erica tetralix* and Blanket Bog
 Species-Rich *Nardus* Grassland, on Siliceous Substrates in Mountain Areas
 Transition Mire and Quaking Bog
 Unable to be Classified from Aerial Imagery

Labels relate to corresponding NVC code (e.g. M20)

Areas are displayed according to the dominant Annex 1 habitat type. Due to habitat mosaics many areas may only contain a small percentage of Annex 1 habitat, whereas others may contain multiple Annex 1 habitats. Please cross-reference the NVC types in Annex 1 areas to Technical Appendix 12.2 for further information.

Kilometres
0 0.1 0.2

Status: FINAL Subtitle: B

Client: **TRANSPORT SCOTLAND**
COMHDHAIL ALBA

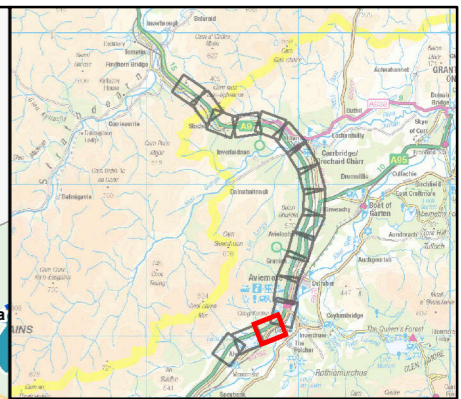
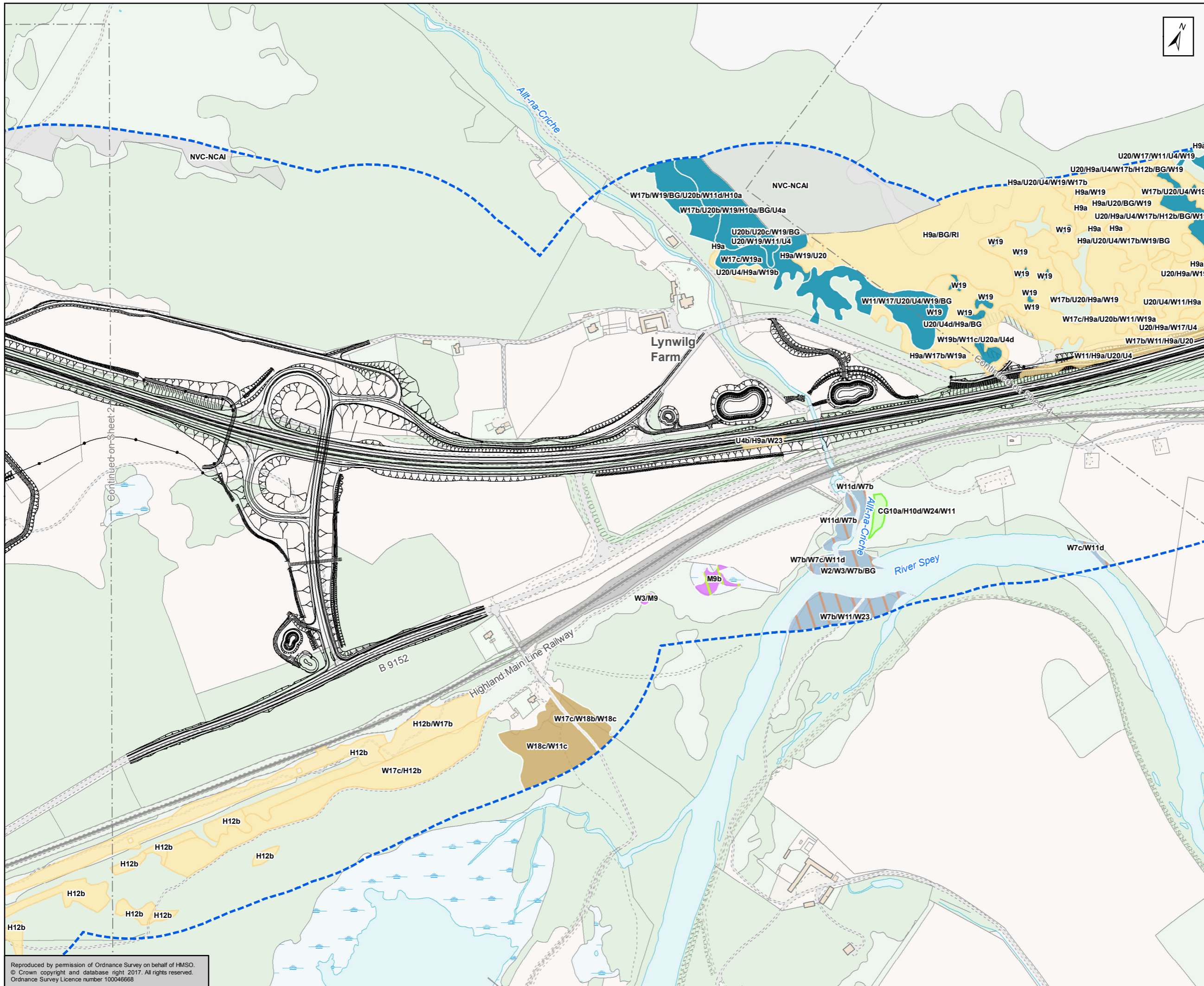
A9
DUALING
PERTH TO INVERNESS
Dalraddy to Stochd

ATKINS mouchel

Figure 12.5
Annex 1 Habitat
Sheet 2 of 17

Scale: 1:5,000	Drawn: RM	Checked: DK	Approved: ROB	Authorised: SB
Document Number: A9P11-AMJ-EBD-H_ZZZZ_XX-DR-GI-0072	Project Originator: A9P11-AMJ-EBD-H_ZZZZ_XX-DR-GI-0072	Volume: A9P11-AMJ-EBD-H_ZZZZ_XX-DR-GI-0072	Revision: P04	
Location:	Type:	Role:	Number:	

Reproduced by permission of Ordnance Survey on behalf of HMSO.
© Crown copyright and database right 2017. All rights reserved.
Ordnance Survey Licence number 100046668



Proposed Scheme
 250m Study Area

Dominant Annex 1 Habitat

- Alkaline Fen
- Alluvial Forests with *Alnus glutinosa* and *Fraxinus excelsior*
- Blanket Bog
- Caledonian Forest
- European Dry Heath
- Juniperus communis* formation on Heath or Calcareous Grassland
- Northern Atlantic Wet Heath with *Erica tetralix*
- Northern Atlantic Wet Heaths with *Erica tetralix* and Blanket Bog
- Species-Rich *Nardus* Grassland, on Siliceous Substrates in Mountain Areas
- Transition Mire and Quaking Bog
- Unable to be Classified from Aerial Imagery

Labels relate to corresponding NVC code (e.g. M20)

Areas are displayed according to the dominant Annex 1 habitat type. Due to habitat mosaics many areas may only contain a small percentage of Annex 1 habitat, whereas others may contain multiple Annex 1 habitats. Please cross-reference the NVC types in Annex 1 areas to Technical Appendix 12.2 for further information.

Kilometres
 0 0.1 0.2

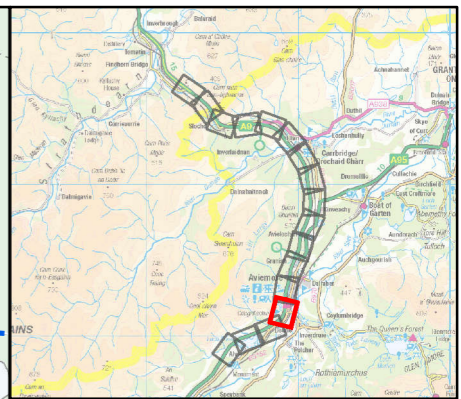
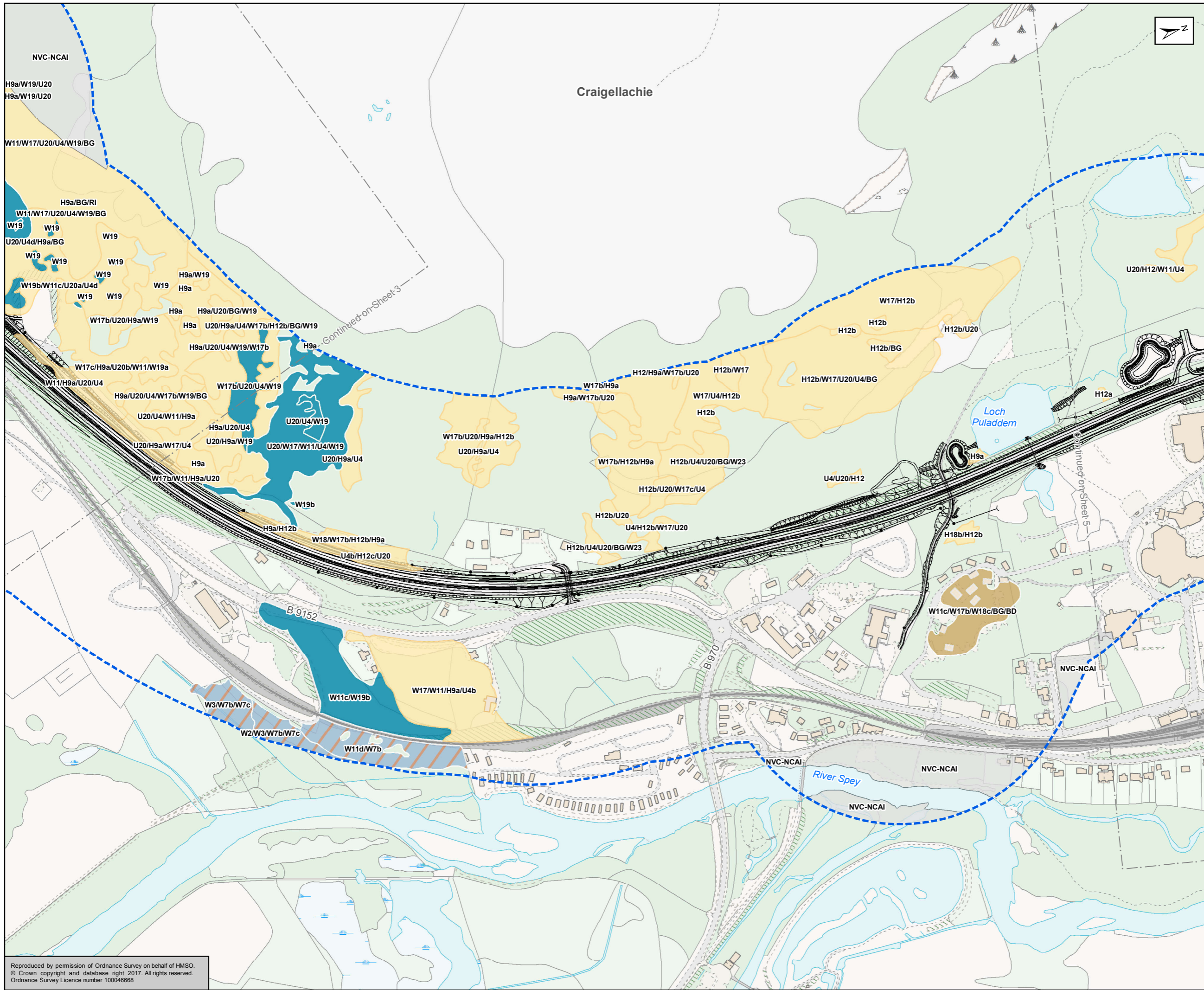
Status: FINAL
 Substrate: B



Figure 12.5
 Annex 1 Habitat
 Sheet 3 of 17

Scale: 1:5,000	Drawn: RM	Checked: DK	Approved: ROB	Authorised: SB
Document Number: A9P11-AMJ-EBD-H_ZZZZ_XZ-DR-GI-0073	Project Originator: A9P11-AMJ-EBD-H_ZZZZ_XZ-DR-GI-0073	Volume: A9P11-AMJ-EBD-H_ZZZZ_XZ-DR-GI-0073	Revision: P04	
Location:	Type:	Role:	Number:	

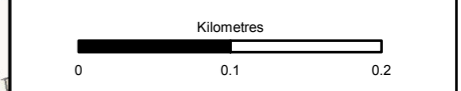
Reproduced by permission of Ordnance Survey on behalf of HMSO.
 © Crown copyright and database right 2017. All rights reserved.
 Ordnance Survey Licence number 100046668



- Proposed Scheme
- 250m Study Area
- Dominant Annex 1 Habitat**
- Alkaline Fen
- Alluvial Forests with *Alnus glutinosa* and *Fraxinus excelsior*
- Blanket Bog
- Caledonian Forest
- European Dry Heath
- Juniperus communis* formation on Heath or Calcareous Grassland
- Northern Atlantic Wet Heath with *Erica tetralix*
- Northern Atlantic Wet Heaths with *Erica tetralix* and Blanket Bog
- Species-Rich *Nardus* Grassland, on Siliceous Substrates in Mountain Areas
- Transition Mire and Quaking Bog
- Unable to be Classified from Aerial Imagery

Labels relate to corresponding NVC code (e.g. M20)

Areas are displayed according to the dominant Annex 1 habitat type. Due to habitat mosaics many areas may only contain a small percentage of Annex 1 habitat, whereas others may contain multiple Annex 1 habitats. Please cross-reference the NVC types in Annex 1 areas to Technical Appendix 12.2 for further information.



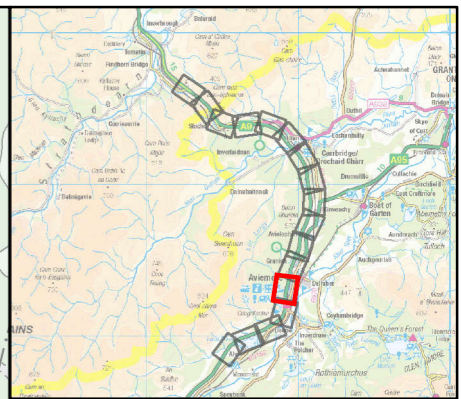
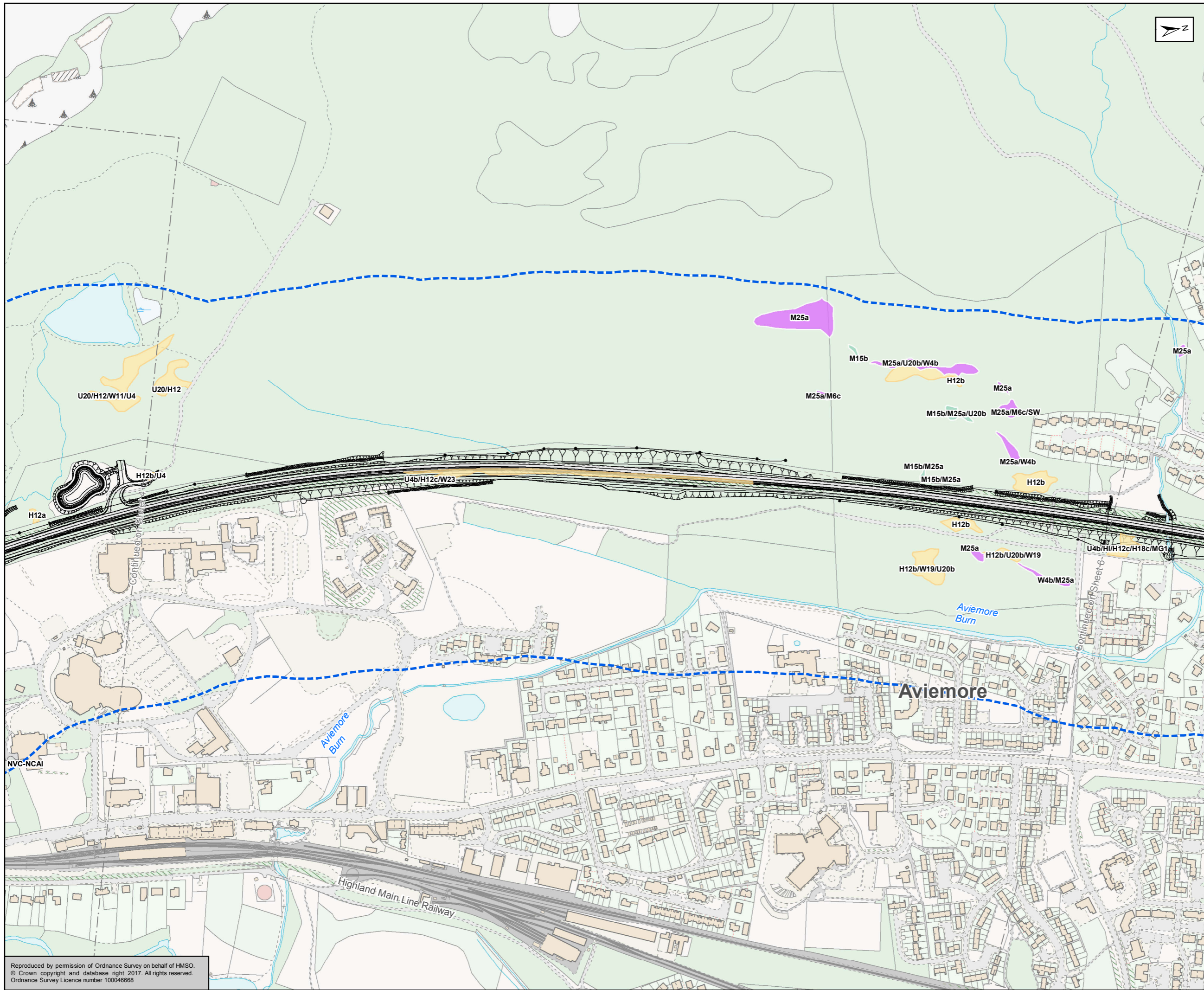
Status	FINAL	Subsidiary	B
--------	-------	------------	---



Figure 12.5
Annex 1 Habitat
Sheet 4 of 17

Scale	1:5,000	Drawn	RM	Checked	DK	Approved	ROB	Authorised	SB
Document Number	Project		Originator		Volume		Revision		
	A9P11-AMJ-EBD-H_ZZZZZ_XX-DR-GI-0074						P04		
Location	Type	Role	Number						

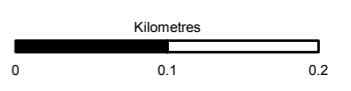
Reproduced by permission of Ordnance Survey on behalf of HMSO.
© Crown copyright and database right 2017. All rights reserved.
Ordnance Survey Licence number 100046668



- Proposed Scheme
 250m Study Area
Dominant Annex 1 Habitat
 Alkaline Fen
 Alluvial Forests with *Alnus glutinosa* and *Fraxinus excelsior*
 Blanket Bog
 Caledonian Forest
 European Dry Heath
Juniperus communis formation on Heath or Calcareous Grassland
 Northern Atlantic Wet Heath with *Erica tetralix*
 Northern Atlantic Wet Heaths with *Erica tetralix* and Blanket Bog
 Species-Rich *Nardus* Grassland, on Siliceous Substrates in Mountain Areas
 Transition Mire and Quaking Bog
 Unable to be Classified from Aerial Imagery

Labels relate to corresponding NVC code (e.g. M20)

Areas are displayed according to the dominant Annex I habitat type. Due to habitat mosaics many areas may only contain a small percentage of Annex I habitat, whereas others may contain multiple Annex I habitats. Please cross-reference the NVC types in Annex I areas to Technical Appendix 12.2 for further information.



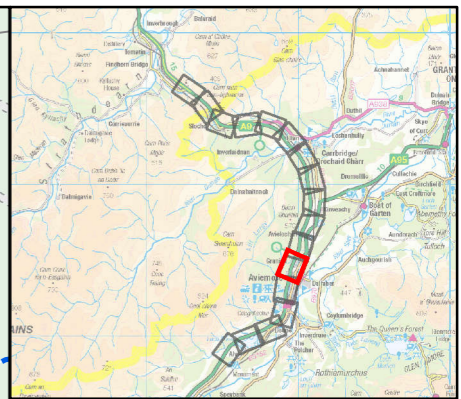
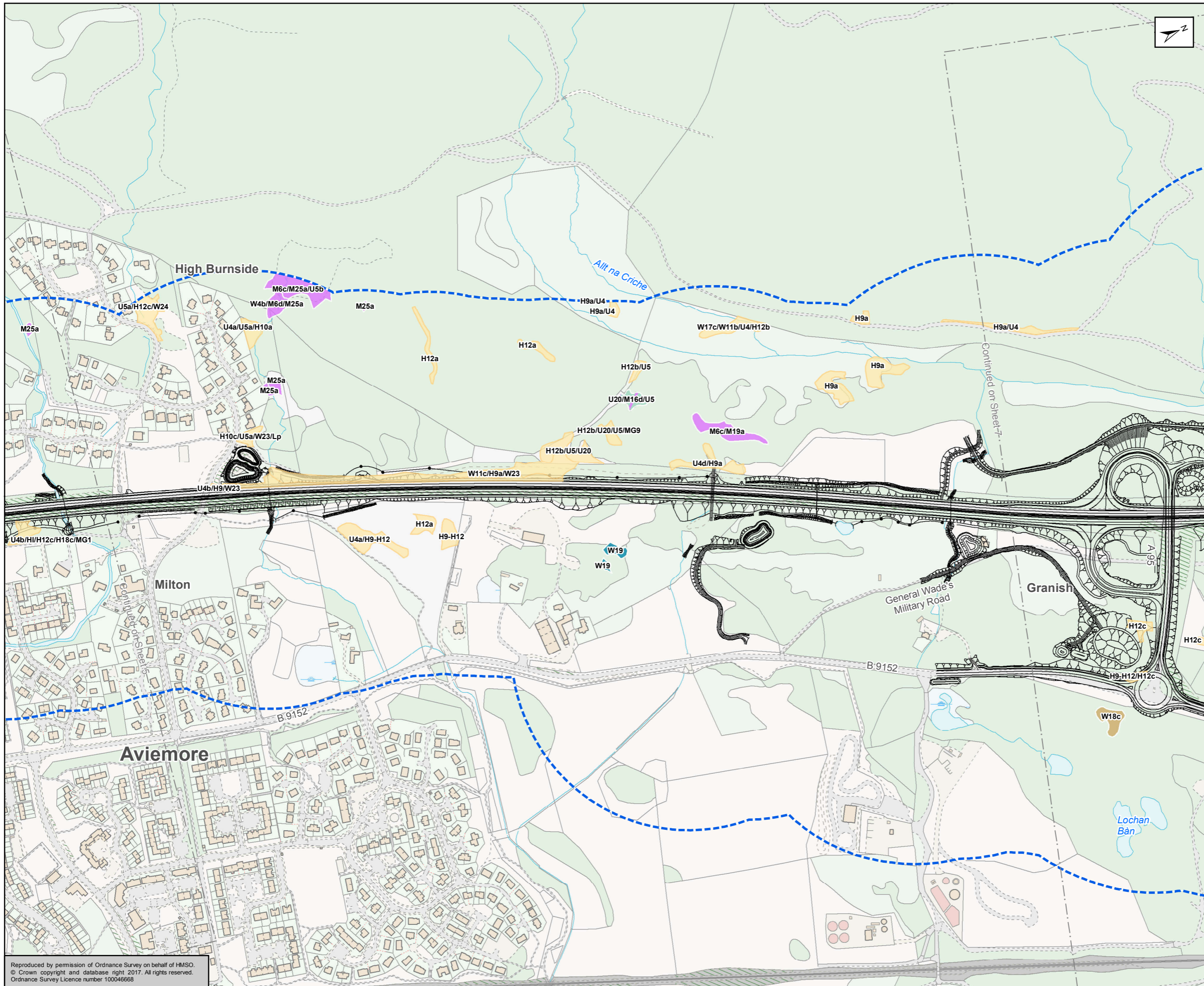
Status	FINAL	Subsidiary	B
--------	-------	------------	---



Figure 12.5
Annex 1 Habitat
Sheet 5 of 17

Scale	1:5,000	Drawn	RM	Checked	DK	Approved	ROB	Authorised	SB	
Document Number	A9P11-AMJ-EBD-H_ZZZZZ_XX-DR-GI-0075								Revision	P04
Project	Originator	Volume								
Location	Type	Role	Number							

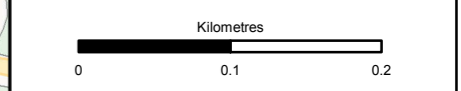
Reproduced by permission of Ordnance Survey on behalf of HMSO.
© Crown copyright and database right 2017. All rights reserved.
Ordnance Survey Licence number 100046668



- Proposed Scheme
- 250m Study Area
- Dominant Annex 1 Habitat**
- Alkaline Fen
 - Alluvial Forests with *Alnus glutinosa* and *Fraxinus excelsior*
 - Blanket Bog
 - Caledonian Forest
 - European Dry Heath
 - Juniperus communis* formation on Heath or Calcareous Grassland
 - Northern Atlantic Wet Heath with *Erica tetralix*
 - Northern Atlantic Wet Heaths with *Erica tetralix* and Blanket Bog
 - Species-Rich *Nardus* Grassland, on Siliceous Substrates in Mountain Areas
 - Transition Mire and Quaking Bog
 - Unable to be Classified from Aerial Imagery

Labels relate to corresponding NVC code (e.g. M20)

Areas are displayed according to the dominant Annex 1 habitat type. Due to habitat mosaics many areas may only contain a small percentage of Annex 1 habitat, whereas others may contain multiple Annex 1 habitats. Please cross-reference the NVC types in Annex 1 areas to Technical Appendix 12.2 for further information.



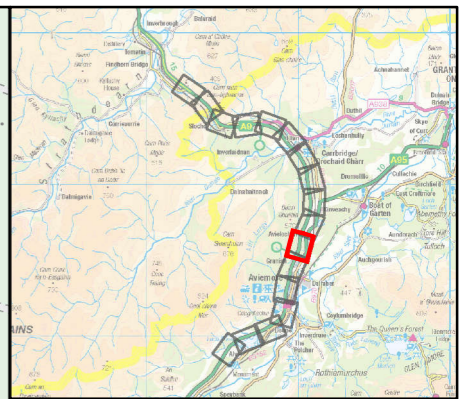
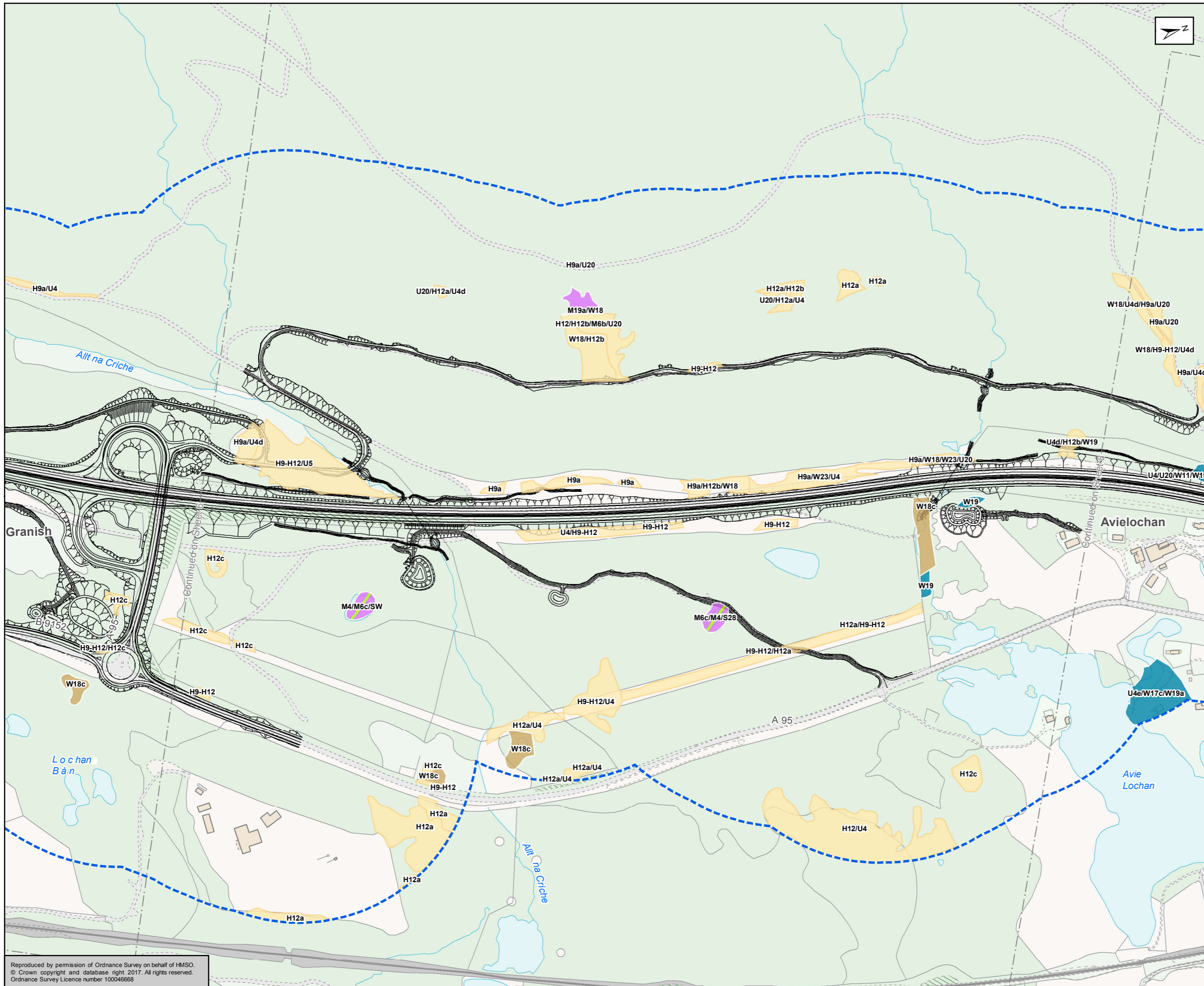
Status	FINAL	Suitability	B
--------	-------	-------------	---



Figure 12.5
Annex 1 Habitat
Sheet 6 of 17

Scale	1:5,000	Drawn	RM	Checked	DK	Approved	ROB	Authorised	SB
Document Number	Project		Originator		Volume		Revision		
A9P11-AMJ-EBD-H_ZZZZZ_XX-DR-GI-0076							P04		
Location	Type	Role	Number						

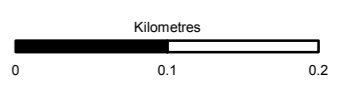
Reproduced by permission of Ordnance Survey on behalf of HMSO.
© Crown copyright and database right 2017. All rights reserved.
Ordnance Survey Licence number 100046668



- Proposed Scheme
 250m Study Area
- Dominant Annex 1 Habitat**
- Alkaline Fen
 - Alluvial Forests with *Alnus glutinosa* and *Fraxinus excelsior*
 - Blanket Bog
 - Caledonian Forest
 - European Dry Heath
 - Juniperus communis* formation on Heath or Calcareous Grassland
 - Northern Atlantic Wet Heath with *Erica tetralix*
 - Northern Atlantic Wet Heaths with *Erica tetralix* and Blanket Bog
 - Species-Rich *Nardus* Grassland, on Siliceous Substrates in Mountain Areas
 - Transition Mire and Quaking Bog
 - Unable to be Classified from Aerial Imagery

Labels relate to corresponding NVC code (e.g. M20)

Areas are displayed according to the dominant Annex I habitat type. Due to habitat mosaics many areas may only contain a small percentage of Annex I habitat, whereas others may contain multiple Annex I habitats. Please cross-reference the NVC types in Annex I areas to Technical Appendix 12.2 for further information.



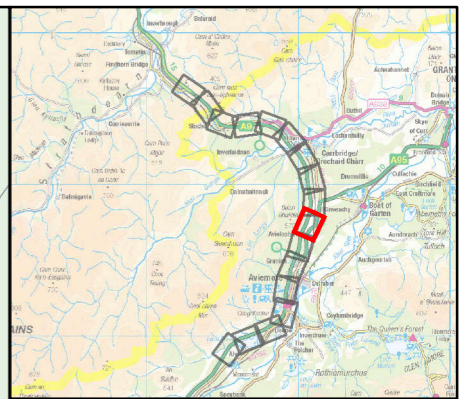
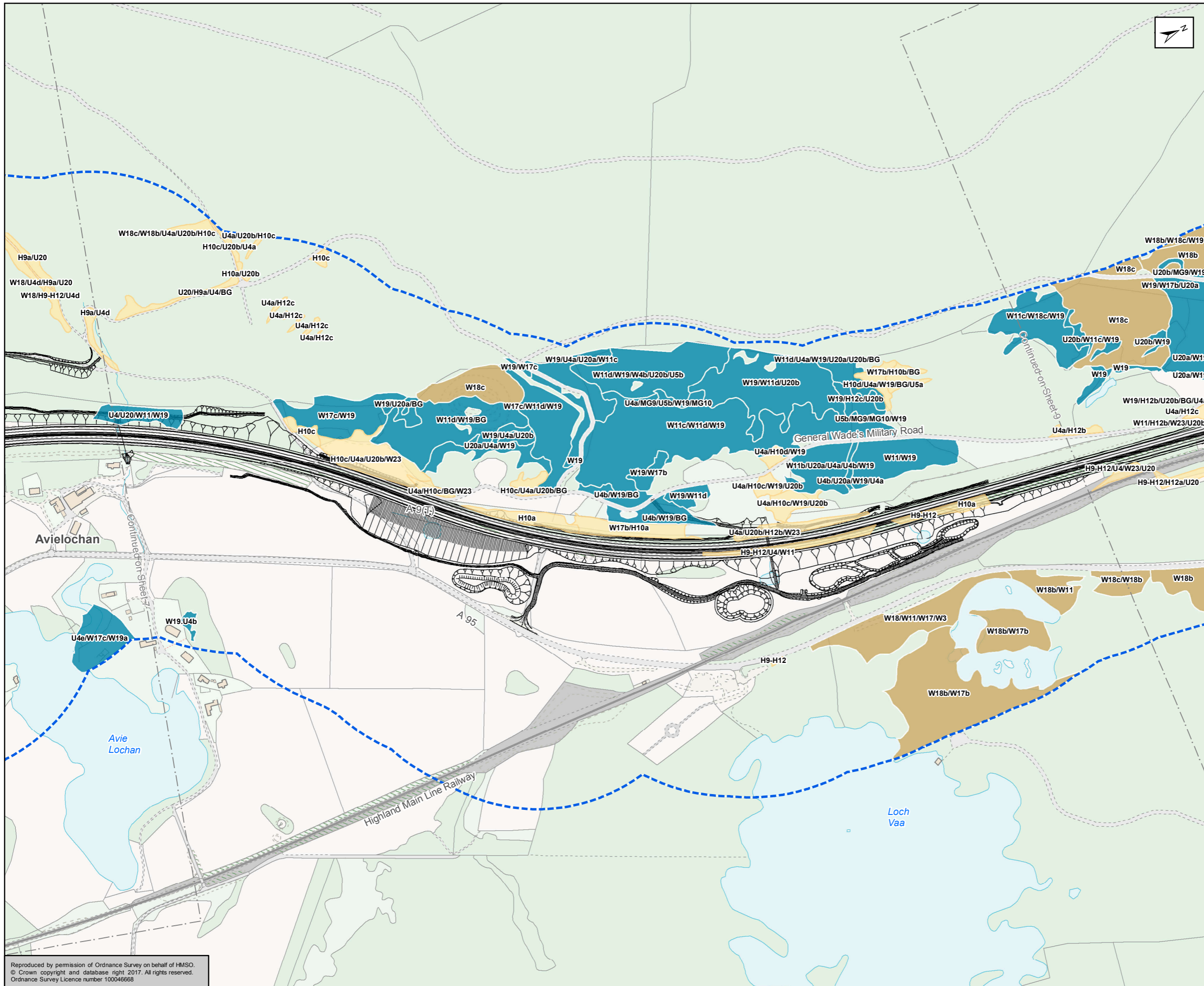
Status	FINAL	Subsidiary	B
--------	-------	------------	---



Figure 12.5
Annex 1 Habitat
Sheet 7 of 17

Scale	1:5,000	Drawn	RM	Checked	DK	Approved	ROB	Authorised	SB	
Document Number	A9P11-AMJ-EBD-H_ZZZZZ_XZ-DR-GI-0077								Revision	P04
Project	Originator	Volume								
Location	Type	Role	Number							

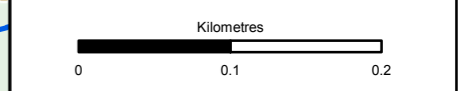
Reproduced by permission of Ordnance Survey on behalf of HMSO. © Crown copyright and database right 2017. All rights reserved. Ordnance Survey Licence number 100046668



- Proposed Scheme
 250m Study Area
- Dominant Annex 1 Habitat**
- Alkaline Fen
 - Alluvial Forests with *Alnus glutinosa* and *Fraxinus excelsior*
 - Blanket Bog
 - Caledonian Forest
 - European Dry Heath
 - Juniperus communis* formation on Heath or Calcareous Grassland
 - Northern Atlantic Wet Heath with *Erica tetralix*
 - Northern Atlantic Wet Heaths with *Erica tetralix* and Blanket Bog
 - Species-Rich *Nardus* Grassland, on Siliceous Substrates in Mountain Areas
 - Transition Mire and Quaking Bog
 - Unable to be Classified from Aerial Imagery

Labels relate to corresponding NVC code (e.g. M20)

Areas are displayed according to the dominant Annex 1 habitat type. Due to habitat mosaics many areas may only contain a small percentage of Annex 1 habitat, whereas others may contain multiple Annex 1 habitats. Please cross-reference the NVC types in Annex 1 areas to Technical Appendix 12.2 for further information.



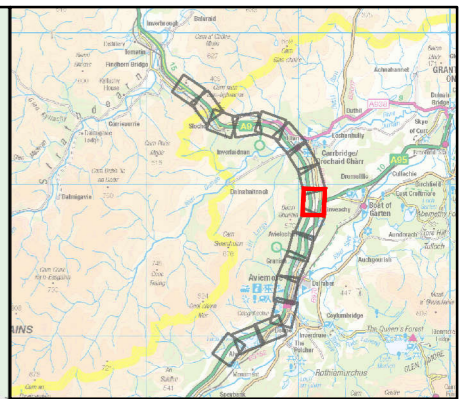
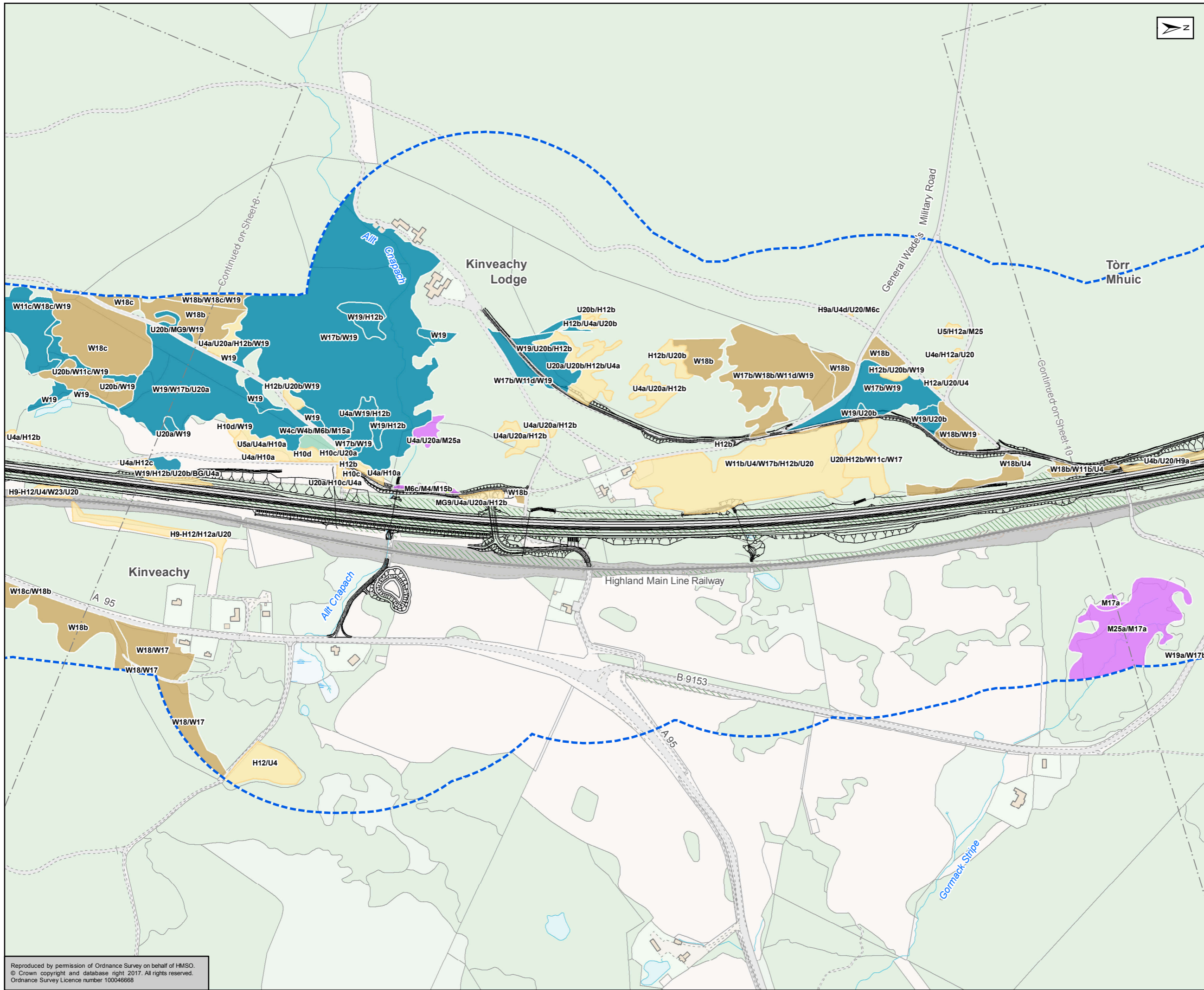
Status: FINAL
 Subtitle: B



Figure 12.5
 Annex 1 Habitat
 Sheet 8 of 17

Scale	1:5,000	Drawn	RM	Checked	DK	Approved	ROB	Authorised	SB
Document Number	A9P11-AMJ-EBD-H_ZZZZZ_XX-DR-GI-0078							Revision	P04
Project	Originator	Volume							
Location	Type	Role	Number						

Reproduced by permission of Ordnance Survey on behalf of HMSO.
 © Crown copyright and database right 2017. All rights reserved.
 Ordnance Survey Licence number 100046668



Proposed Scheme
 250m Study Area

Dominant Annex 1 Habitat

- Alkaline Fen
- Alluvial Forests with *Alnus glutinosa* and *Fraxinus excelsior*
- Blanket Bog
- Caledonian Forest
- European Dry Heath
- Juniperus communis* formation on Heath or Calcareous Grassland
- Northern Atlantic Wet Heath with *Erica tetralix*
- Northern Atlantic Wet Heaths with *Erica tetralix* and Blanket Bog
- Species-Rich *Nardus* Grassland, on Siliceous Substrates in Mountain Areas
- Transition Mire and Quaking Bog
- Unable to be Classified from Aerial Imagery

Labels relate to corresponding NVC code (e.g. M20)

Areas are displayed according to the dominant Annex 1 habitat type. Due to habitat mosaics many areas may only contain a small percentage of Annex 1 habitat, whereas others may contain multiple Annex 1 habitats. Please cross-reference the NVC types in Annex 1 areas to Technical Appendix 12.2 for further information.

Kilometres
 0 0.1 0.2

Status	FINAL	Subsidiary	B
--------	-------	------------	---



Figure 12.5
 Annex 1 Habitat
 Sheet 9 of 17

Scale	1:5,000	Drawn	RM	Checked	DK	Approved	ROB	Authorised	SB	
Document Number	A9P11-AMJ-EBD-H_ZZZZZ_XX-DR-GI-0079								Revision	P04
Project	Originator	Volume								
Location	Type	Role	Number							

Reproduced by permission of Ordnance Survey on behalf of HMSO.
 © Crown copyright and database right 2017. All rights reserved.
 Ordnance Survey Licence number 100046668