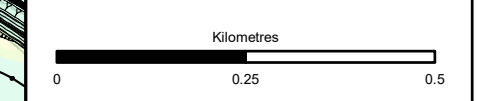


- Proposed Scheme
- Long Term Noise Level Change**
- dB L_{A10,18Hour}**
- Major -10.0
 - Moderate -5.0 - -9.9
 - Minor -3.0 - -4.9
 - Negligible -0.1 - -2.9
 - No change
 - Negligible +0.1 - 2.9
 - Minor +3.0 - 4.9
 - Moderate +5.0 - 9.9
 - Major +10.0

Noise contours calculated at 4.0m above local ground height.



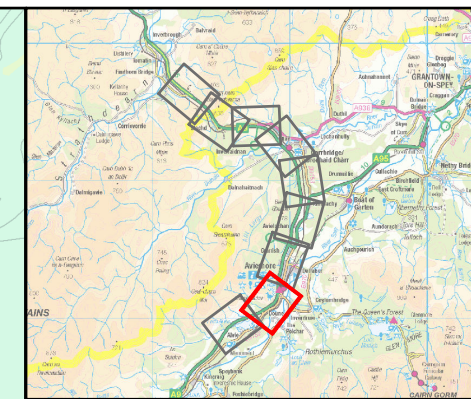
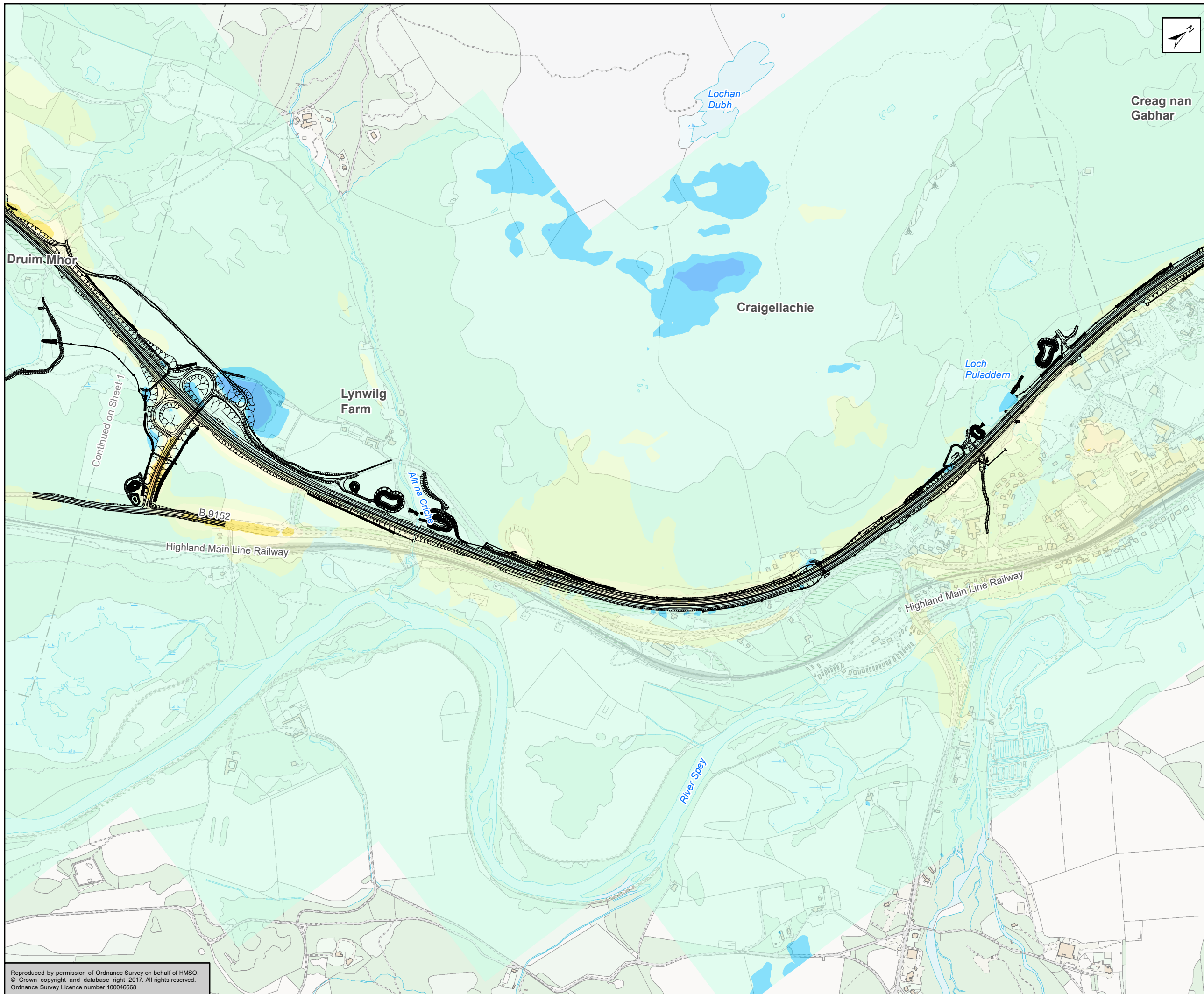
Status	FINAL	Subsidiary	B
--------	-------	------------	---



Figure 17.7
 Long Term Do-Something Night time
 Noise Level Change Contour
 Sheet 1 of 9

Scale	1:10,000	Drawn	AC	Checked	RB	Approved	ROB	Authorised	SB
Document Number	A9P11-AMJ-ENV-Z_ZZZZZ_XX-DR-GI-0041							Revision	P04
Project	Originator	Volume							
Location	Type	Role	Number						

Reproduced by permission of Ordnance Survey on behalf of HMSO.
 © Crown copyright and database right 2017. All rights reserved.
 Ordnance Survey Licence number 100046668



Proposed Scheme

Long Term Noise Level Change

dB L_{A10,18Hour}

- Major -10.0
- Moderate -5.0 - -9.9
- Minor -3.0 - -4.9
- Negligible -0.1 - -2.9
- No change
- Negligible +0.1 - 2.9
- Minor +3.0 - 4.9
- Moderate +5.0 - 9.9
- Major +10.0

Noise contours calculated at 4.0m above local ground height.

Kilometres

0 0.25 0.5

Status	Sensitivity
FINAL	B

Client

TRANSPORT SCOTLAND
COMHDAIL ALBA

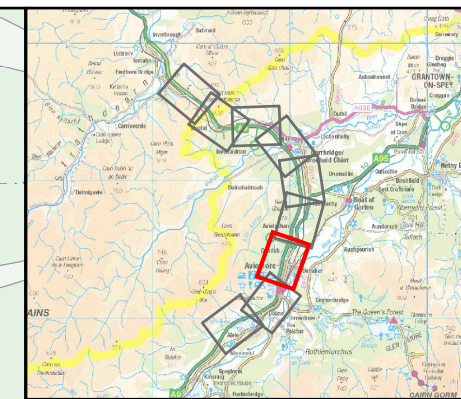
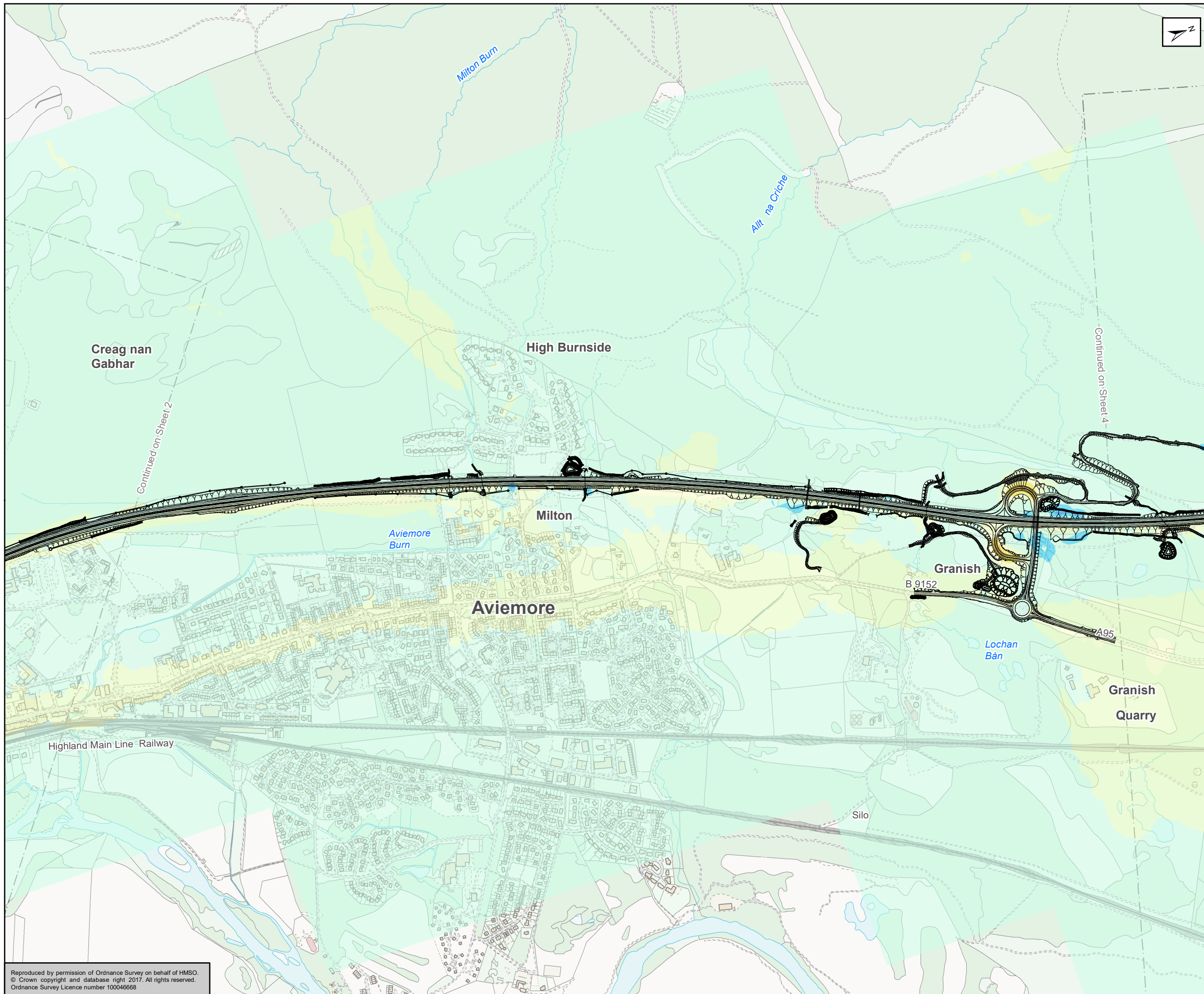
A9
DUALLING
PERTH TO INVERNESS
Dalraddy to Stochd

ATKINS mouchel

Figure 17.7
Long Term Do-Something Night time
Noise Level Change Contour
Sheet 2 of 9

Scale	Drawn	Checked	Approved	Authorised
1:10,000	AC	RB	ROB	SB
Document Number	Project	Originator	Volume	Revision
	A9P11-AMJ-ENV-Z_ZZZZZ_XX-DR-GI-0042			P04
Location	Type	Role	Number	

Reproduced by permission of Ordnance Survey on behalf of HMSO.
© Crown copyright and database right 2017. All rights reserved.
Ordnance Survey Licence number 100046668



~ Proposed Scheme

Long Term Noise Level Change

dB L_{A10,18Hour}

- Major -10.0
- Moderate -5.0 - -9.9
- Minor -3.0 - -4.9
- Negligible -0.1 - -2.9
- No change
- Negligible +0.1 - 2.9
- Minor +3.0 - 4.9
- Moderate +5.0 - 9.9
- Major +10.0

Noise contours calculated at 4.0m above local ground height.

Continued on Sheet 4

Continued on Sheet 2

Kilometres

0 0.25 0.5

Status	Suitability
FINAL	B

TRANSPORT SCOTLAND
 COMHDHAIL ALBA

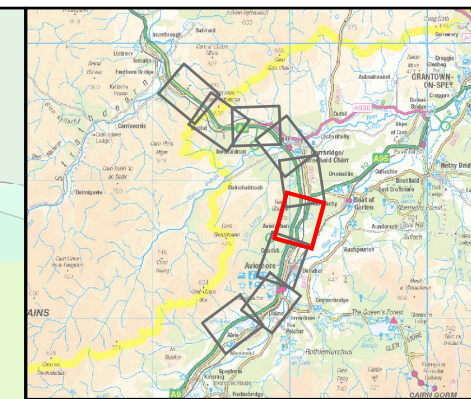
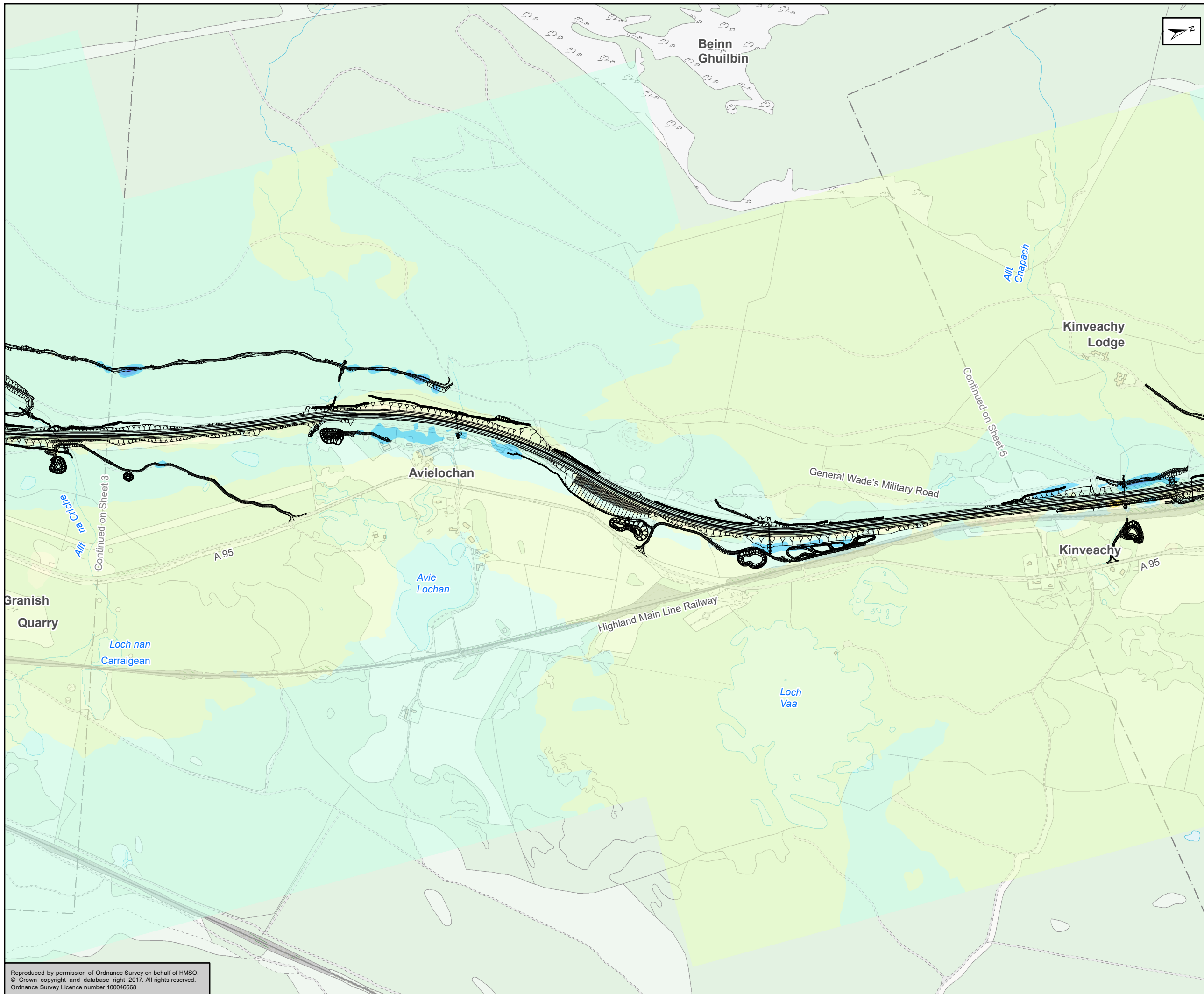
A9
DUALLING
 PERTH TO INVERNESS
 Dalraddy to Stlochd

ATKINS mouchel

Figure 17.7
 Long Term Do-Something Night time
 Noise Level Change Contour
 Sheet 3 of 9

Scale	Drawn	Checked	Approved	Authorised
1:10,000	AC	RB	ROB	SB
Document Number	Project	Originator	Volume	Revision
A9P11-AMJ-ENV-Z_ZZZZZ_XX-DR-GI-0043				P04
Location	Type	Role	Number	

Reproduced by permission of Ordnance Survey on behalf of HMSO.
 © Crown copyright and database right 2017. All rights reserved.
 Ordnance Survey Licence number 100046668



~ Proposed Scheme

Long Term Noise Level Change

dB L_{A10,18Hour}

- Major -10.0
- Moderate -5.0 - -9.9
- Minor -3.0 - -4.9
- Negligible -0.1 - -2.9
- No change
- Negligible +0.1 - 2.9
- Minor +3.0 - 4.9
- Moderate +5.0 - 9.9
- Major +10.0

Noise contours calculated at 4.0m above local ground height.

Kilometres

0 0.25 0.5

Status: FINAL B

Client: **TRANSPORT SCOTLAND**
COMHDHAIL ALBA

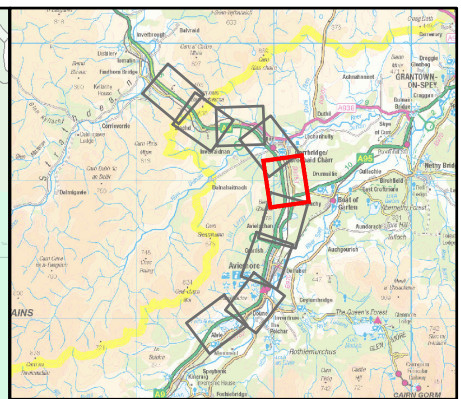
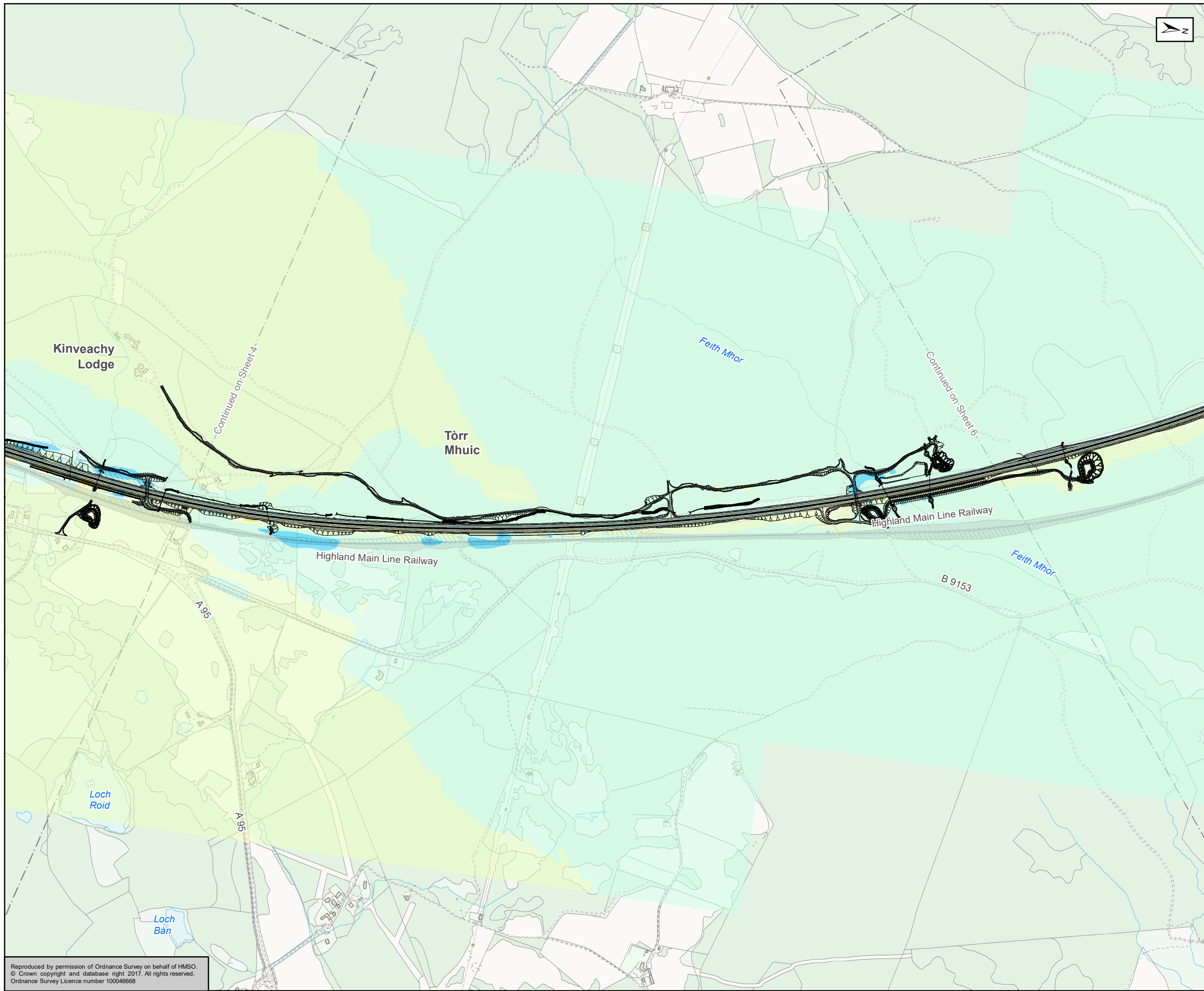
A9
DUALING
PERTH TO INVERNESS
Dalraddy to Stochd

ATKINS mouchel

Figure 17.7
Long Term Do-Something Night time
Noise Level Change Contour
Sheet 4 of 9

Scale	1:10,000	Drawn	AC	Checked	RB	Approved	ROB	Authorised	SB	
Document Number	A9P11-AMJ-ENV-Z_ZZZZZ_XX-DR-GI-0044								Revision	P04
Project	Originator	Volume								
Location	Type	Role	Number							

Reproduced by permission of Ordnance Survey on behalf of HMSO.
© Crown copyright and database right 2017. All rights reserved.
Ordnance Survey Licence number 100046668



~ Proposed Scheme

Long Term Noise Level Change

dB L_{A10,18Hour}

- Major -10.0
- Moderate -5.0 - -9.9
- Minor -3.0 - -4.9
- Negligible -0.1 - -2.9
- No change
- Negligible +0.1 - 2.9
- Minor +3.0 - 4.9
- Moderate +5.0 - 9.9
- Major +10.0

Noise contours calculated at 4.0m above local ground height.

Kilometres

0 0.25 0.5

Status: Sustainability

FINAL B

Client:

TRANSPORT SCOTLAND
COMHDHAIL ALBA

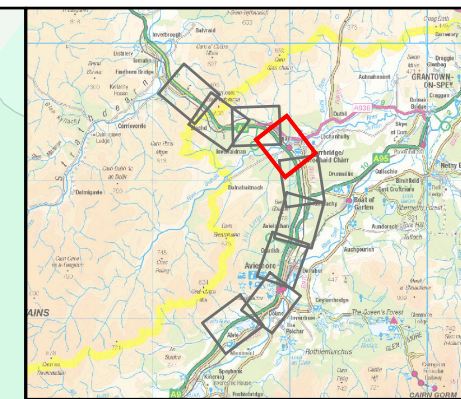
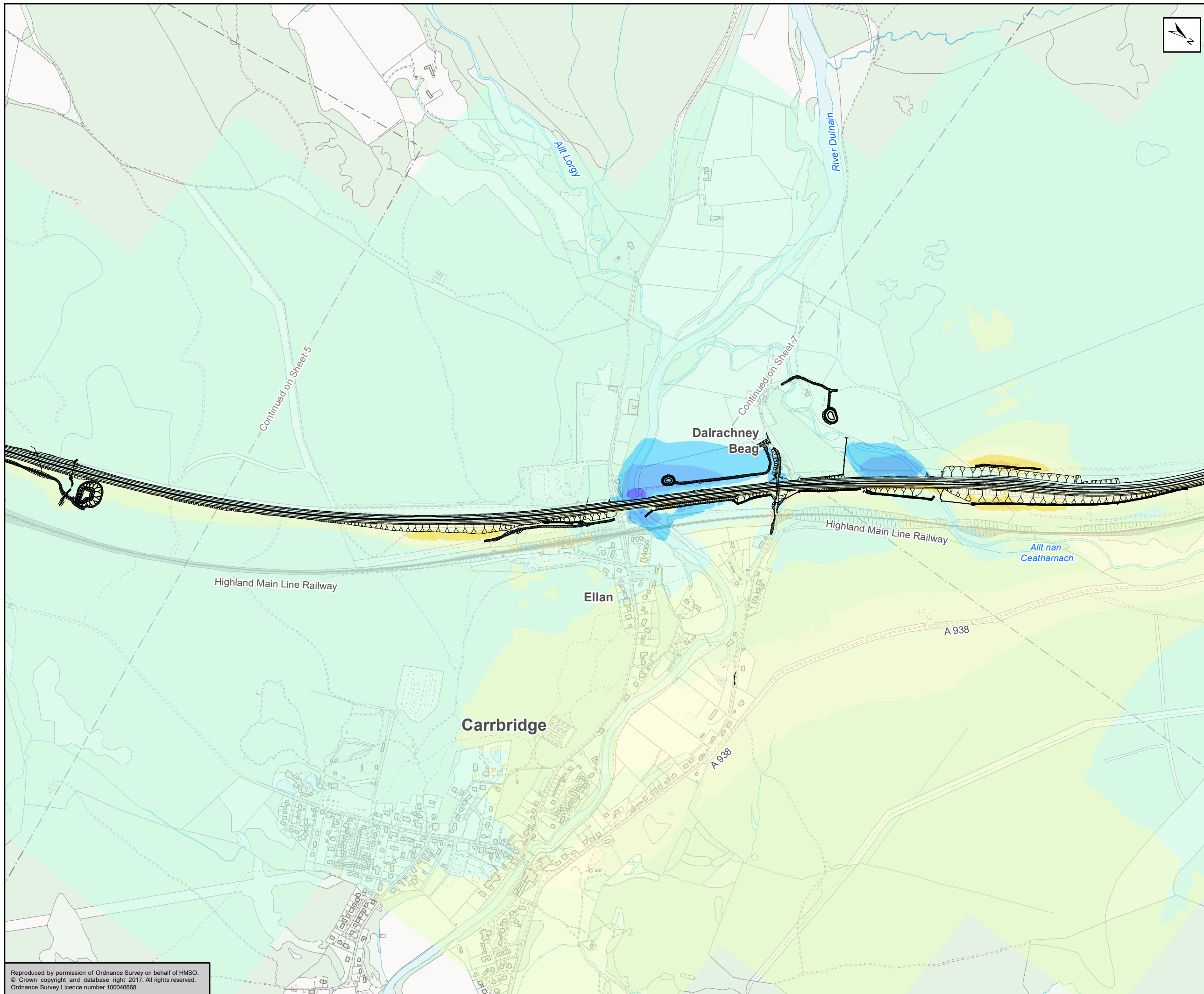
A9
DUALING
PERTH TO INVERNESS
Dalraddy to Stochd

ATKINS mouchel

Figure 17.7
Long Term Do-Something Night time
Noise Level Change Contour
Sheet 5 of 9

Scale	1:10,000	Drawn	AC	Checked	RB	Approved	ROB	Authorised	SB	
Document Number	A9P11-AMJ-ENV-Z_ZZZZZ_XX-DR-GI-0045								Revision	P04
Project	Originator	Volume								
Location	Type	Role	Number							

Reproduced by permission of Ordnance Survey on behalf of HMSO.
© Crown copyright and database right 2017. All rights reserved.
Ordnance Survey Licence number 100046668



Proposed Scheme

Long Term Noise Level Change

dB L_{A10,18Hour}

- Major -10.0
- Moderate -5.0 - -9.9
- Minor -3.0 - -4.9
- Negligible -0.1 - -2.9
- No change
- Negligible +0.1 - 2.9
- Minor +3.0 - 4.9
- Moderate +5.0 - 9.9
- Major +10.0

Noise contours calculated at 4.0m above local ground height.

Kilometres

0 0.25 0.5

Status	FINAL	Subsidiary	B
--------	-------	------------	---

Client

TRANSPORT SCOTLAND
COMHDHAIL ALBA

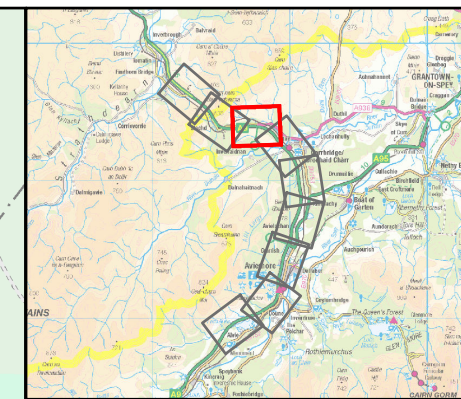
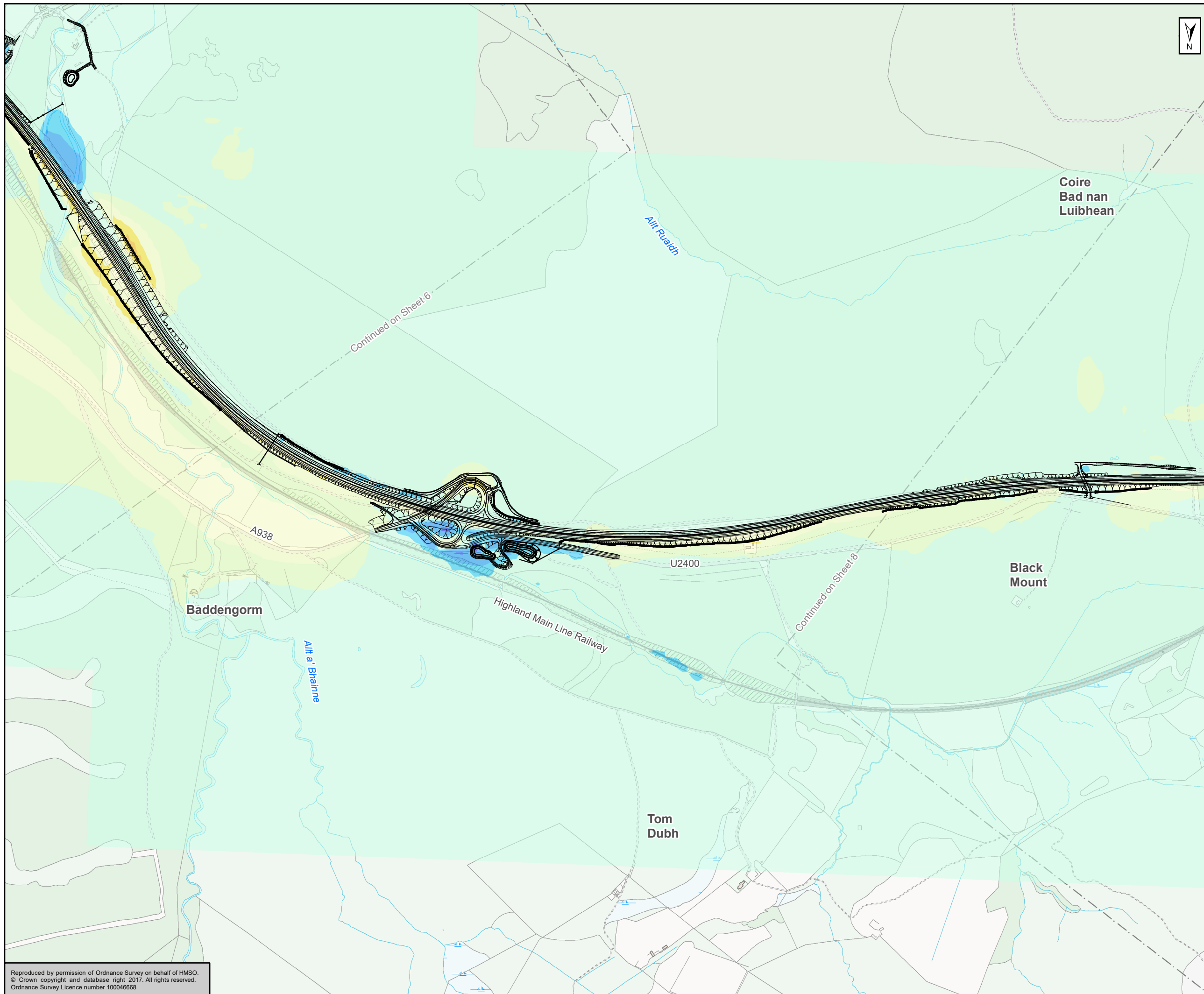
A9
DUALLING
PERTH TO INVERNESS
Dalraddy to Stochd

ATKINS mouchel

Figure 17.7
Long Term Do-Something Night time
Noise Level Change Contour
Sheet 6 of 9

Scale	1:10,000	Drawn	AC	Checked	RB	Approved	ROB	Authorised	SB
Document Number	A9P11-AMJ-ENV-Z_ZZZZZ_XX-DR-GI-0046							Revision	P04
Project	Originator	Volume							
Location	Type	Role	Number						

Reproduced by permission of Ordnance Survey on behalf of HMSO.
© Crown copyright and database right 2017. All rights reserved.
Ordnance Survey Licence number 100046668



Proposed Scheme

Long Term Noise Level Change

dB L_{A10,18Hour}

- Major -10.0
- Moderate -5.0 - -9.9
- Minor -3.0 - -4.9
- Negligible -0.1 - -2.9
- No change
- Negligible +0.1 - 2.9
- Minor +3.0 - 4.9
- Moderate +5.0 - 9.9
- Major +10.0

Noise contours calculated at 4.0m above local ground height.

Kilometres

0 0.25 0.5

Status	Suitability
FINAL	B

Client

TRANSPORT SCOTLAND
COMHDHAIL ALBA

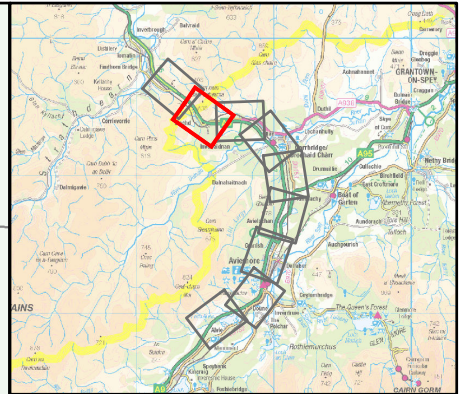
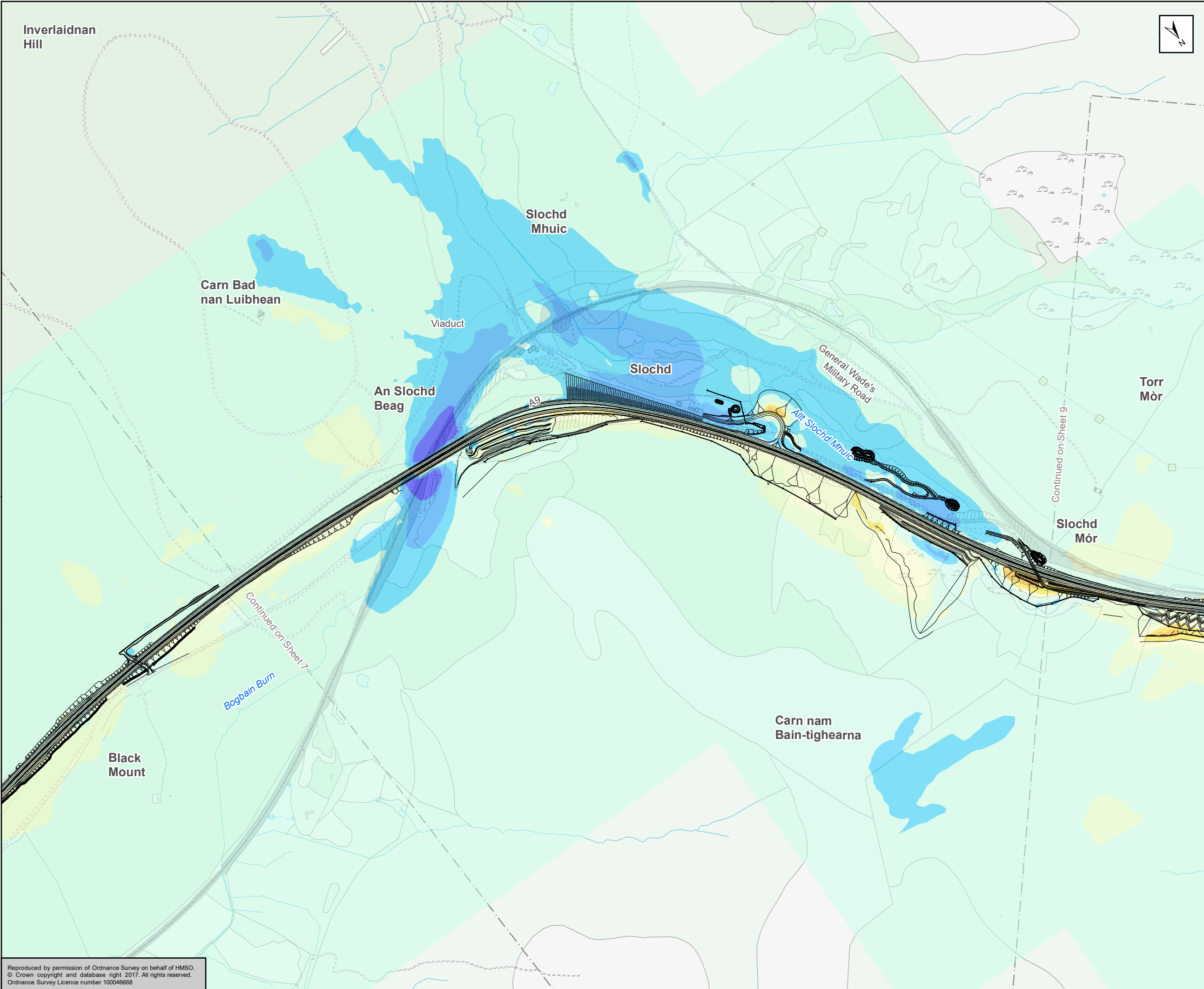
A9
DUALLING
PERTH TO INVERNESS
Dalraddy to Stochd

ATKINS mouchel

Figure 17.7
Long Term Do-Something Night time
Noise Level Change Contour
Sheet 7 of 9

Scale	1:10,000	Drawn	AC	Checked	RB	Approved	ROB	Authorised	SB
Document Number	Project Originator Volume								Revision
	A9P11-AMJ-ENV-Z_ZZZZZ_XX-DR-GI-0047								P04
Location	Type	Role	Number						

Reproduced by permission of Ordnance Survey on behalf of HMSO.
© Crown copyright and database right 2017. All rights reserved.
Ordnance Survey Licence number 100046668



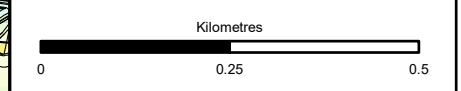
Proposed Scheme

Long Term Noise Level Change

dB L_{A10,18Hour}

- Major -10.0
- Moderate -5.0 - -9.9
- Minor -3.0 - -4.9
- Negligible -0.1 - -2.9
- No change
- Negligible +0.1 - 2.9
- Minor +3.0 - 4.9
- Moderate +5.0 - 9.9
- Major +10.0

Noise contours calculated at 4.0m above local ground height.



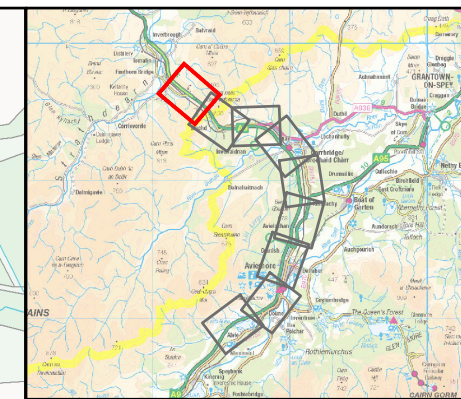
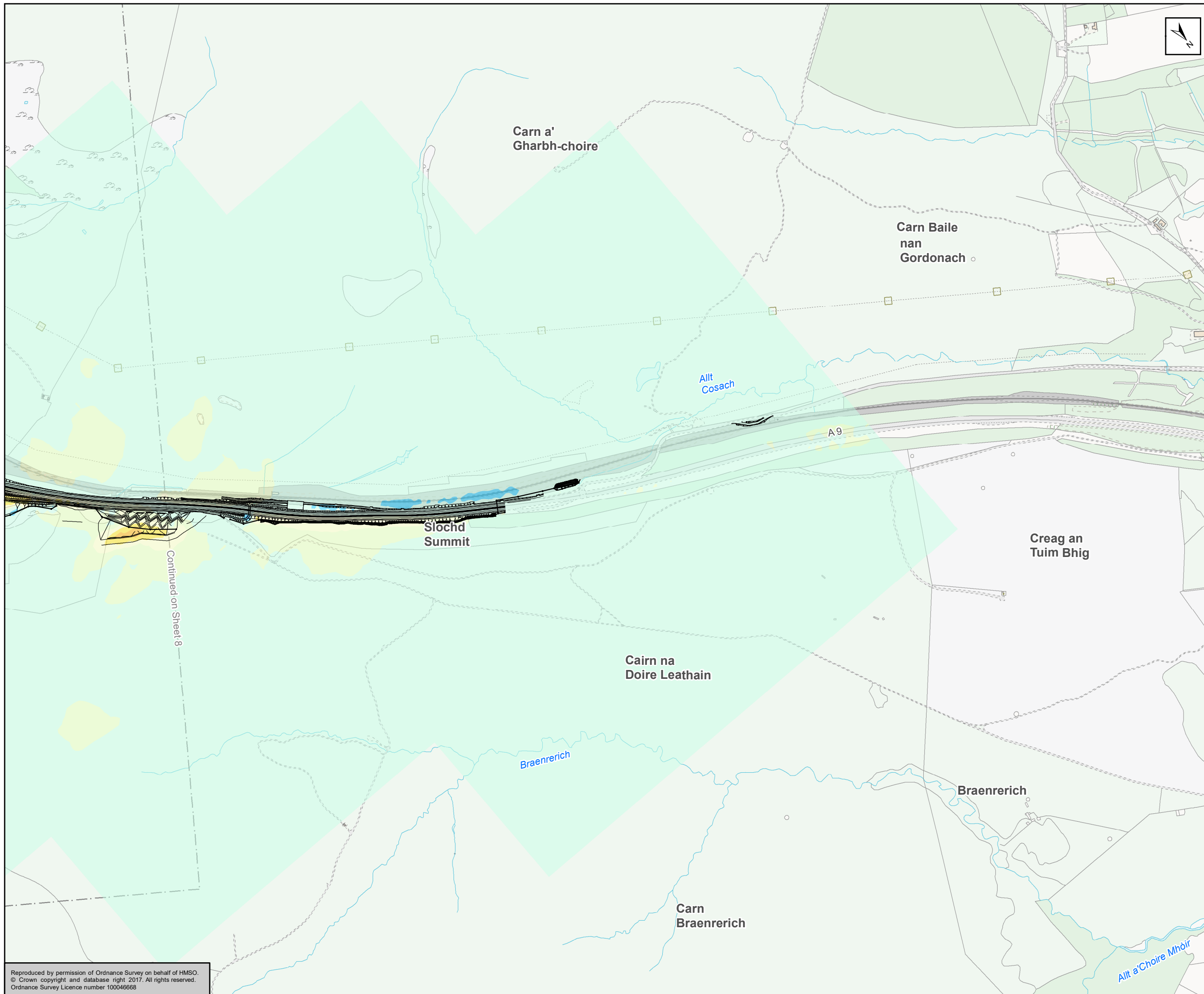
Status	FINAL	Subsidiary	B
--------	-------	------------	---



Figure 17.7
 Long Term Do-Something Night time
 Noise Level Change Contour
 Sheet 8 of 9

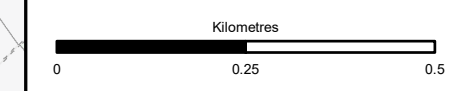
Scale	1:10,000	Drawn	AC	Checked	RB	Approved	ROB	Authorised	SB
Document Number	A9P11-AMJ-ENV-Z_ZZZZZ_XX-DR-GI-0048							Revision	P04
Project	Originator	Volume							
Location	Type	Role	Number						

Reproduced by permission of Ordnance Survey on behalf of HMSO.
 © Crown copyright and database right 2017. All rights reserved.
 Ordnance Survey Licence number 100046668



- Proposed Scheme
- Long Term Noise Level Change**
- dB L_{A10,18Hour}**
- Major -10.0
 - Moderate -5.0 - -9.9
 - Minor -3.0 - -4.9
 - Negligible -0.1 - -2.9
 - No change
 - Negligible +0.1 - 2.9
 - Minor +3.0 - 4.9
 - Moderate +5.0 - 9.9
 - Major +10.0

Noise contours calculated at 4.0m above local ground height.



Status	FINAL	Subsidiary	B
--------	-------	------------	---



Figure 17.7
Long Term Do-Something Night time
Noise Level Change Contour
Sheet 9 of 9

Scale	1:10,000	Drawn	AC	Checked	RB	Approved	ROB	Authorised	SB	
Document Number	A9P11-AMJ-ENV-Z_ZZZZZ_XX-DR-GI-0049								Revision	P04
Project	Originator	Volume								
Location	Type	Role	Number							

Reproduced by permission of Ordnance Survey on behalf of HMSO.
© Crown copyright and database right 2017. All rights reserved.
Ordnance Survey Licence number 100046668