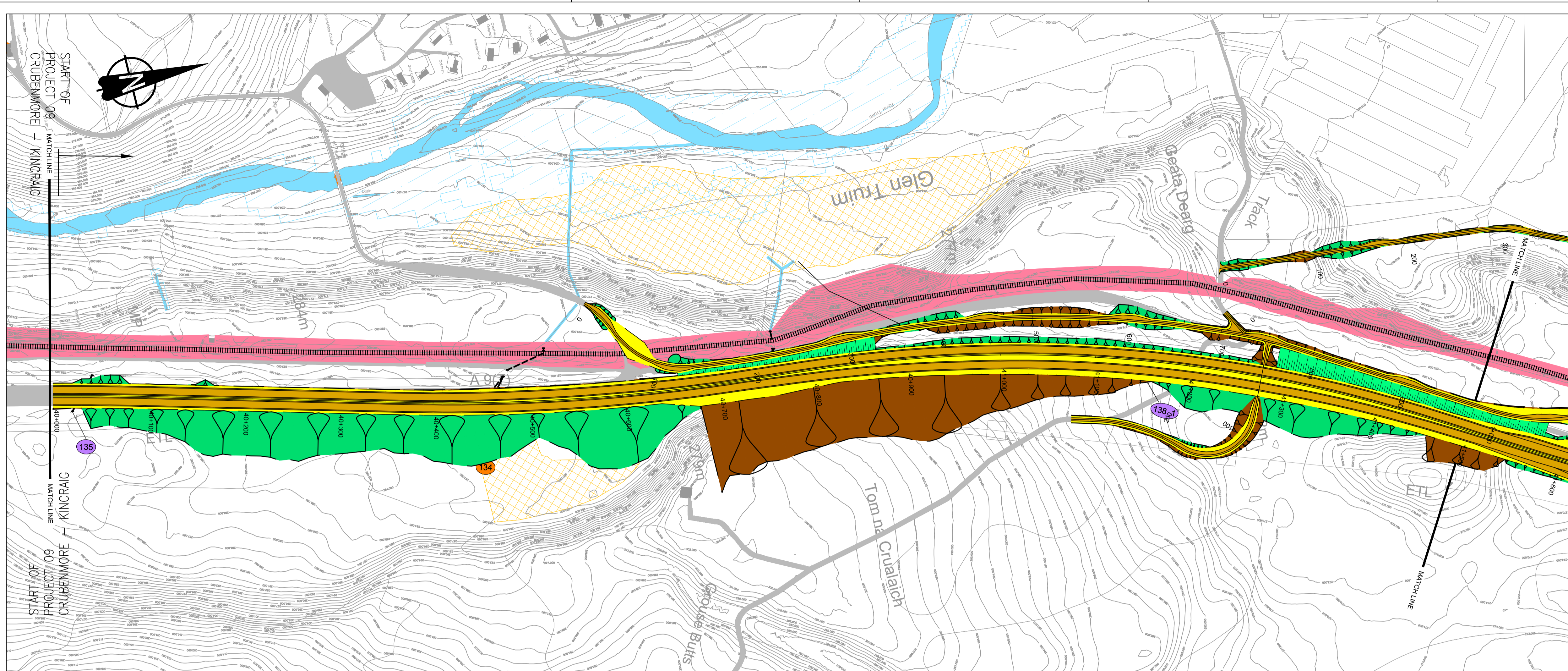


## The Proposed Scheme Part 2

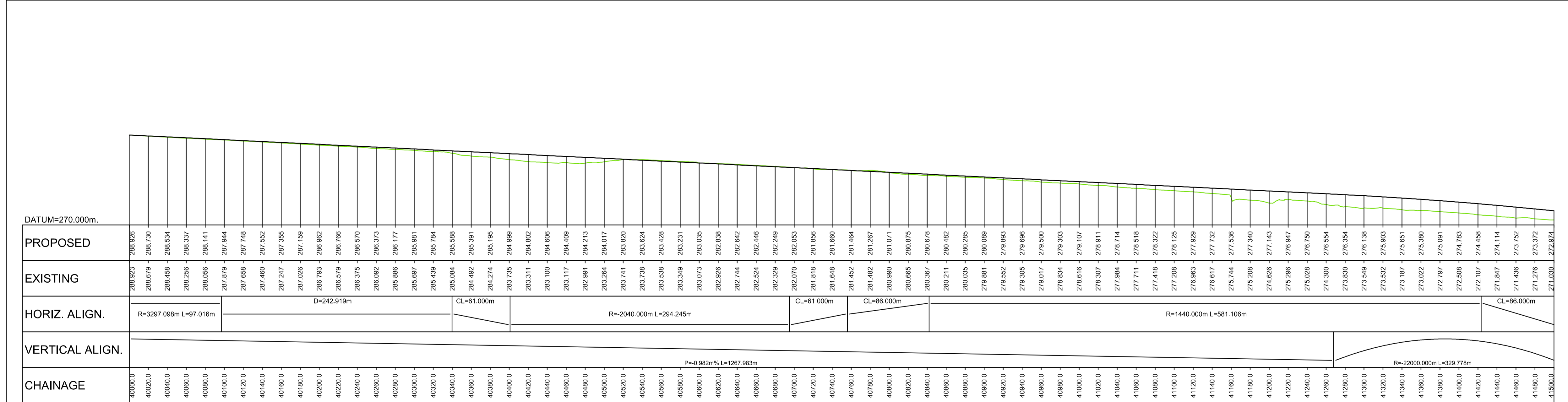
Drawing No.	Drawing Type	Drawing Title	Projectwise Drawing Reference	Software
5.14	PROPOSED SCHEME PLAN	PLAN AND PROFILE chainage 40000 - 41500	A9P09-CFJ-EGN-M_ML400_ZZ-DR-EN-0005	CAD
5.15	PROPOSED SCHEME PLAN	PLAN AND PROFILE chainage 41500 - 43000	A9P09-CFJ-EGN-M_ML415_ZZ-DR-EN-0001	CAD
5.16	PROPOSED SCHEME PLAN	PLAN AND PROFILE chainage 43000 - 44500	A9P09-CFJ-EGN-M_ML430_ZZ-DR-EN-0001	CAD
5.17	PROPOSED SCHEME PLAN	PLAN AND PROFILE chainage 44500 - 46000	A9P09-CFJ-EGN-M_ML445_ZZ-DR-EN-0001	CAD
5.18	PROPOSED SCHEME PLAN	PLAN AND PROFILE chainage 46000 - 47500	A9P09-CFJ-EGN-M_ML460_ZZ-DR-EN-0001	CAD
5.19	PROPOSED SCHEME PLAN	PLAN AND PROFILE chainage 47500 - 49000	A9P09-CFJ-EGN-M_ML475_ZZ-DR-EN-0001	CAD
5.20	PROPOSED SCHEME PLAN	PLAN AND PROFILE chainage 49000 - 50500	A9P09-CFJ-EGN-M_ML490_ZZ-DR-EN-0001	CAD
5.21	PROPOSED SCHEME PLAN	PLAN AND PROFILE chainage 50500 - 52000	A9P09-CFJ-EGN-M_ML505_ZZ-DR-EN-0001	CAD
5.22	PROPOSED SCHEME PLAN	PLAN AND PROFILE chainage 52000 - 53500	A9P09-CFJ-EGN-M_ML520_ZZ-DR-EN-0001	CAD
5.23	PROPOSED SCHEME PLAN	PLAN AND PROFILE chainage 53500 - 55000	A9P09-CFJ-EGN-M_ML535_ZZ-DR-EN-0001	CAD
5.24	PROPOSED SCHEME PLAN	PLAN AND PROFILE chainage 55000 - 56500	A9P09-CFJ-EGN-M_ML550_ZZ-DR-EN-0004	CAD
5.25	PROPOSED SCHEME PLAN	PLAN AND PROFILE chainage 56500 - 56645	A9P09-CFJ-EGN-M_ML565_ZZ-DR-EN-0001	CAD



**GENERAL NOTES**

- All dimensions in metres unless stated otherwise.
- THE MAINLINE ALIGNMENTS INCORPORATE VARIED EARTHWORKS SLOPES. WHERE POSSIBLE EARTHWORKS SLOPES ACCOMMODATE LANDSCAPING CONSIDERATIONS. IN ADDITION, EARTHWORKS SLOPES ARE STEEPENED WHERE NECESSARY TO MINIMISE IMPACTS ON ADJACENT CONSTRAINTS SUCH AS THE RAILWAY AND WHERE ROCK CUTS ARE ANTICIPATED.

- LEGEND:**
- PROPOSED ROAD**
- EARTHWORKS CUTTING
  - EARTHWORKS FILL
  - SLOPE BETWEEN CARRIAGEWAYS
  - CARRIAGEWAY
  - VERGE / CENTRAL RESERVE
- KEY ENGINEERING CONSTRAINTS**
- RIVER / STREAM / LOCH
  - CFJV FLOOD MAPPING (1:200 YEAR)
  - MAJOR CULVERTS / WATERCOURSE STRUCTURE REFS
  - MINOR CULVERTS / WATERCOURSE STRUCTURE REFS
  - OTHER CULVERTS / WATERCOURSE STRUCTURE REFS
  - RAILWAY
  - BUILDINGS
  - EXISTING ROAD / FOOTPATH / CYCLE ROUTE
  - WATERCOURSE DIVERSION
  - EXISTING ROCK CUTTING
  - EXISTING ACCESS (TIER 1 A OR B)
  - EXISTING ACCESS (TIER 2 C OR UNCLASSIFIED)
  - EXISTING ACCESS (TIER 3 PRIVATE)
  - LISTED BUILDINGS (HS)



**LONG SECTION**  
SCALE 1:2500H/1:500V

REV	SUIT	DATE	DESCRIPTION	BY	APP
P04	S4	24-07-18	Fourth Issue	PL	RD
P03	S4	09-04-18	Third Issue	PL	RG
P02	S4	22-09-17	Second Issue	AC	RG
P01	S4	10-11-16	First Issue	AC	RG



CH2M HILL Fairhurst JV  
C/O: City Park 368 Alexandra Parade Glasgow G3 3AU  
Tel +44 (0)141 552 2000 Fax +44 (0)141 552 2525



**PROJECT 9 CRUBENMORE TO KINRAIG EIA PLAN AND PROFILE DRAWING 5.14**  
chainage 40000 - 41500

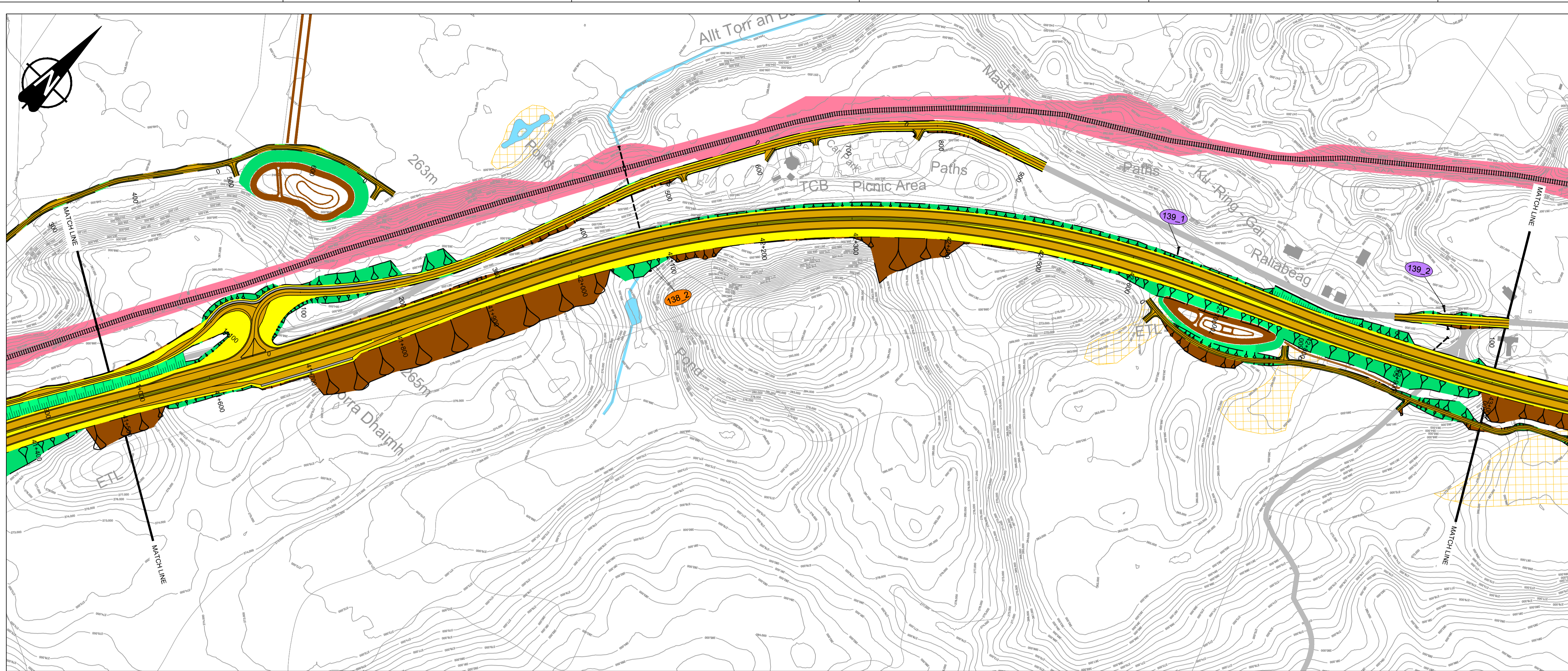
DESIGN:	DRAWN:	CHK:	APP:
A Campbell	A Campbell	C Southwell	R Gray

1:2500 at A1 (1:5000 at A3)

DATE:	10/11/16
PROJ:	495298
DWG:	A9P09-CFJ-EGN-M_ML400_ZZ-DR-EN-0005
SHEET:	1 of 12
REVISION:	C01
SUITABILITY:	A3

Reproduced by permission of Ordnance Survey on behalf of Her Majesty's Stationery Office. © Crown copyright and database right 2018. All rights reserved. Ordnance Survey Licence Number: 100046668.

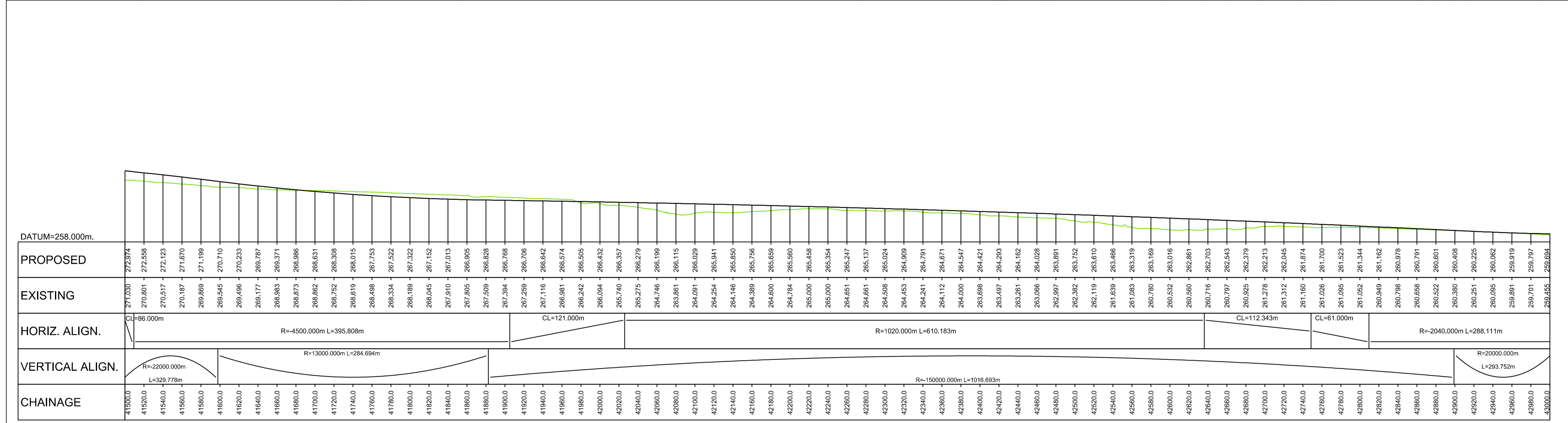
A9P09-CFJ-HML-M\_ML400\_ML-DR-RD-0001.dwg



**GENERAL NOTES**

- All dimensions in metres unless stated otherwise.
- THE MAINLINE ALIGNMENTS INCORPORATE VARIED EARTHWORKS SLOPES. WHERE POSSIBLE EARTHWORKS SLOPES ACCOMMODATE LANDSCAPING CONSIDERATIONS. IN ADDITION, EARTHWORKS SLOPES ARE STEEPENED WHERE NECESSARY TO MINIMISE IMPACTS ON ADJACENT CONSTRAINTS SUCH AS THE RAILWAY AND WHERE ROCK CUTS ARE ANTICIPATED.

- LEGEND:
- PROPOSED ROAD
    - EARTHWORKS CUTTING
    - EARTHWORKS FILL
  - SLOPE BETWEEN CARRIAGEWAYS
  - CARRIAGEWAY
  - VERGE / CENTRAL RESERVE
- KEY ENGINEERING CONSTRAINTS
- RIVER / STREAM / LOCH
  - CFJV FLOOD MAPPING (1:200 YEAR)
  - MAJOR CULVERTS / WATERCOURSE STRUCTURE REFS
  - MINOR CULVERTS / WATERCOURSE STRUCTURE REFS
  - OTHER CULVERTS / WATERCOURSE STRUCTURE REFS
  - RAILWAY
  - BUILDINGS
  - EXISTING ROAD / FOOTPATH / CYCLE ROUTE
  - WATERCOURSE DIVERSION
  - EXISTING ROCK CUTTING
  - EXISTING ACCESS (TIER 1 A OR B)
  - EXISTING ACCESS (TIER 2 C OR UNCLASSIFIED)
  - EXISTING ACCESS (TIER 3 PRIVATE)
  - LISTED BUILDINGS (HS)



**LONG SECTION**  
SCALE 1:2500H/1:500V

REV	SUIT	DATE	DESCRIPTION	BY	APP
P04	S4	24-07-18	Fourth Issue	PL	RG
P03	S4	09-04-18	Third Issue	PL	RG
P02	S4	22-09-17	Second Issue	AC	RG
P01	S4	10-11-16	First Issue	AC	RG



CH2M HILL Fairhurst JV  
C/O: City Park 368 Alexandra Parade Glasgow G3 3AU  
Tel +44 (0)141 552 2000 Fax +44 (0)141 552 2525



**PROJECT 9 CRUBENMORE TO KIN CRAIG EIA PLAN AND PROFILE DRAWING 5.15 chainage 41500 - 43000**

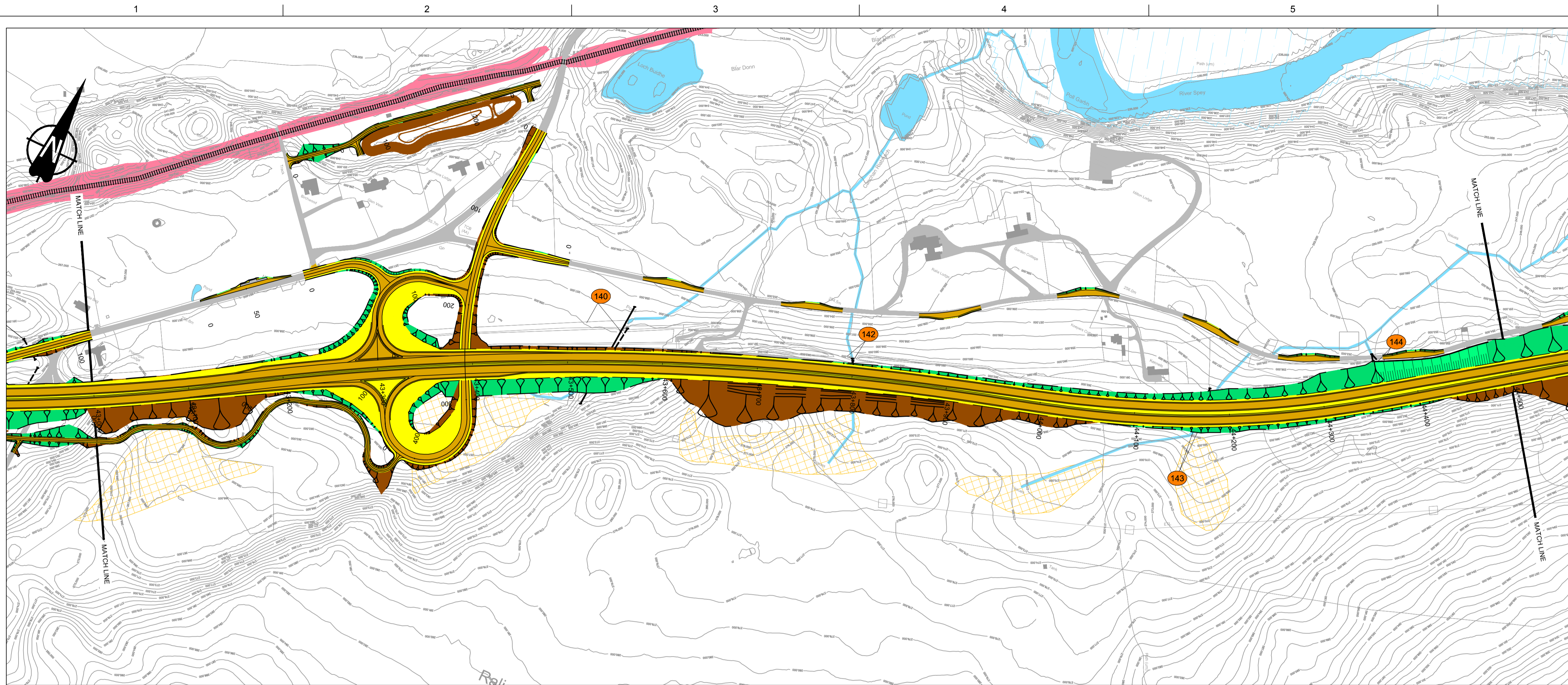
DESIGN:	DRAWN:	CHK:	APP:
A Campbell	A Campbell	C Southwell	R Gray

1:2500 at A1 (1:5000 at A3)

DATE:	10/11/16
PROJ:	495298
DWG:	A9P09-CFJ-EGN-M_ML415_ZZ-DR-EN-0001
SHEET:	2 of 12
REVISION:	C01
SUITABILITY:	A3

Reproduced by permission of Ordnance Survey on behalf of Her Majesty's Stationery Office. © Crown copyright and database right 2018. All rights reserved. Ordnance Survey Licence Number: 100046668.

A9P09-CFJ-HML-M\_ML400\_ML-DR-RD-0002.dwg



**GENERAL NOTES**

- All dimensions in metres unless stated otherwise.
- THE MAINLINE ALIGNMENTS INCORPORATE VARIED EARTHWORKS SLOPES. WHERE POSSIBLE EARTHWORKS SLOPES ACCOMMODATE LANDSCAPING CONSIDERATIONS. IN ADDITION, EARTHWORKS SLOPES ARE STEEPENED WHERE NECESSARY TO MINIMISE IMPACTS ON ADJACENT CONSTRAINTS SUCH AS THE RAILWAY AND WHERE ROCK CUTS ARE ANTICIPATED.

- LEGEND:**
- PROPOSED ROAD
    - EARTHWORKS CUTTING
    - EARTHWORKS FILL
    - SLOPE BETWEEN CARRIAGEWAYS
    - CARRIAGEWAY
    - VERGE / CENTRAL RESERVE
  - KEY ENGINEERING CONSTRAINTS
    - RIVER / STREAM / LOCH
    - CFJV FLOOD MAPPING (1:200 YEAR)
    - MAJOR CULVERTS / WATERCOURSE STRUCTURE REFS
    - MINOR CULVERTS / WATERCOURSE STRUCTURE REFS
    - OTHER CULVERTS / WATERCOURSE STRUCTURE REFS
    - RAILWAY
    - BUILDINGS
    - EXISTING ROAD / FOOTPATH / CYCLE ROUTE
    - WATERCOURSE DIVERSION
    - EXISTING ROCK CUTTING
    - EXISTING ACCESS (TIER 1 A OR B)
    - EXISTING ACCESS (TIER 2 C OR UNCLASSIFIED)
    - EXISTING ACCESS (TIER 3 PRIVATE)
    - LISTED BUILDINGS (HS)



PROPOSED	EXISTING	HORIZ. ALIGN.	VERTICAL ALIGN.	CHAINAGE
259.855	259.855	R=2040.000m L=288.111m	R=20000.000m L=293.752m	43000.0
259.811	259.811	CL=61.000m		43020.0
259.548	259.548			43040.0
259.125	259.125			43060.0
259.200	259.200			43080.0
259.479	259.479			43100.0
259.486	259.486			43120.0
259.533	259.533			43140.0
259.590	259.590			43160.0
259.668	259.668			43180.0
259.763	259.763			43200.0
259.863	259.863			43220.0
259.963	259.963			43240.0
260.063	260.063			43260.0
260.163	260.163			43280.0
260.263	260.263			43300.0
260.363	260.363			43320.0
260.463	260.463			43340.0
260.563	260.563			43360.0
260.663	260.663			43380.0
260.763	260.763			43400.0
260.863	260.863			43420.0
260.963	260.963			43440.0
261.063	261.063			43460.0
261.163	261.163			43480.0
261.263	261.263			43500.0
261.363	261.363			43520.0
261.463	261.463			43540.0
261.563	261.563			43560.0
261.663	261.663			43580.0
261.763	261.763			43600.0
261.863	261.863			43620.0
261.963	261.963			43640.0
262.063	262.063			43660.0
262.163	262.163			43680.0
262.263	262.263			43700.0
262.363	262.363			43720.0
262.463	262.463			43740.0
262.563	262.563			43760.0
262.663	262.663			43780.0
262.763	262.763			43800.0
262.863	262.863			43820.0
262.963	262.963			43840.0
263.063	263.063			43860.0
263.163	263.163			43880.0
263.263	263.263			43900.0
263.363	263.363			43920.0
263.463	263.463			43940.0
263.563	263.563			43960.0
263.663	263.663			43980.0
263.763	263.763			44000.0
263.863	263.863			44020.0
263.963	263.963			44040.0
264.063	264.063			44060.0
264.163	264.163			44080.0
264.263	264.263			44100.0
264.363	264.363			44120.0
264.463	264.463			44140.0
264.563	264.563			44160.0
264.663	264.663			44180.0
264.758	264.758			44200.0
264.845	264.845			44220.0
264.924	264.924			44240.0
265.058	265.058			44260.0
265.113	265.113			44280.0
265.160	265.160			44300.0
265.198	265.198			44320.0
265.229	265.229			44340.0
265.252	265.252			44360.0
265.267	265.267			44380.0
265.274	265.274			44400.0
265.273	265.273			44420.0
265.264	265.264			44440.0
265.247	265.247			44460.0
265.222	265.222			44480.0
				44500.0

**LONG SECTION**  
SCALE 1:2500H/1:500V

REV	SUIT	DATE	DESCRIPTION	BY	APP
P04	S4	24-07-18	Forth Issue	PL	RG
P03	S4	09-04-18	Third Issue	PL	RG
P02	S4	22-09-17	Second Issue	AC	RG
P01	S4	10-11-16	First Issue	AC	RG

**ch2m FAIRHURST**  
CH2M HILL Fairhurst JV  
C/O: City Park 368 Alexandra Parade Glasgow G3 3AU  
Tel +44 (0)141 552 2000 Fax +44 (0)141 552 2525

**TRANSPORT SCOTLAND**  
COMBINED A14  
**A9 DUALING**  
PERTH TO INVERNESS  
Crucial to Kinross

**PROJECT 9 CRUBENMORE TO KINRAIG EIA PLAN AND PROFILE DRAWING 5.16 chainage 43000 - 44500**

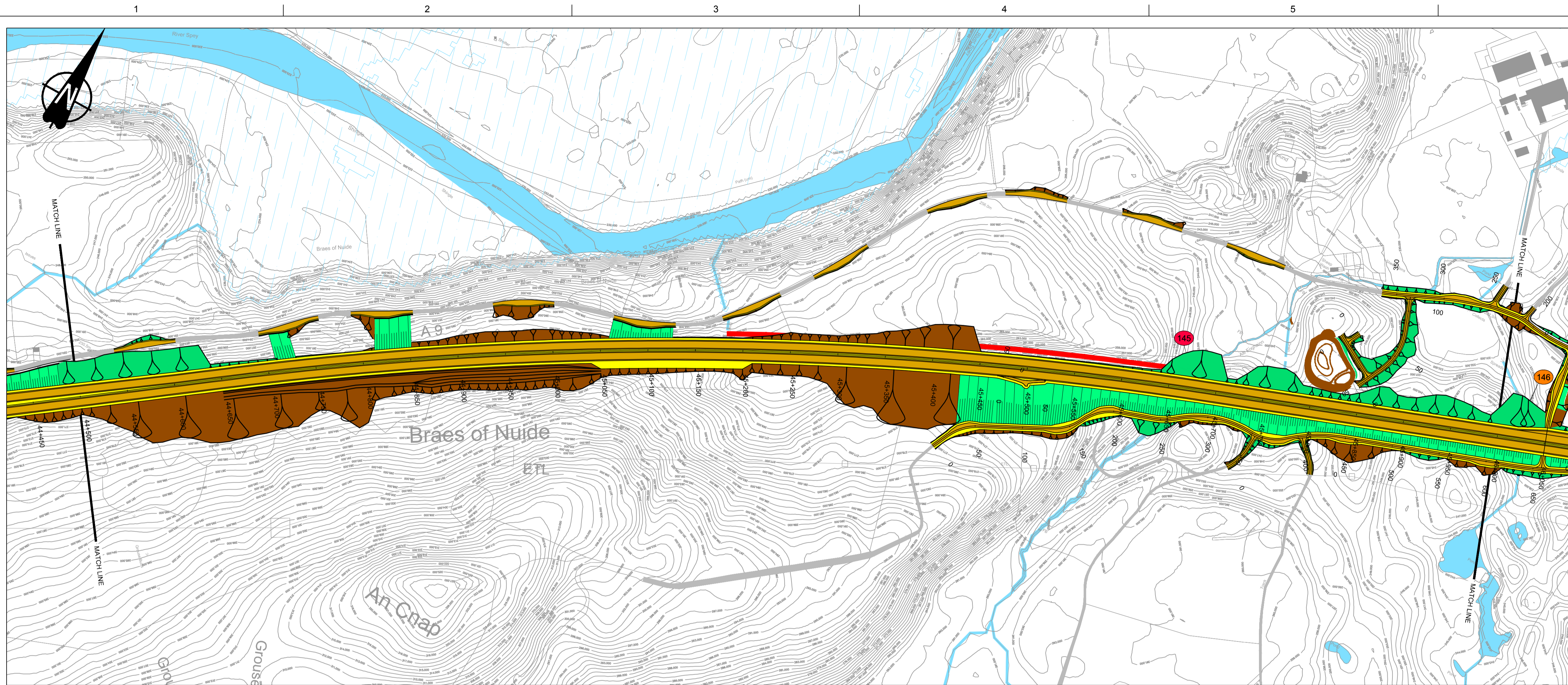
DESIGN:	DRAWN:	CHK:	APP:
A Campbell	A Campbell	C Southwell	R Gray

1:2500 at A1 (1:5000 at A3)

DATE:	10/11/16
PROJ:	495298
DWG:	A9P09-CFJ-EGN-M_ML430_ZZ-DR-EN-0001
SHEET:	3 of 12
REVISION:	C01
SUITABILITY:	A3

Reproduced by permission of Ordnance Survey on behalf of Her Majesty's Stationery Office. © Crown copyright and database right 2018. All rights reserved. Ordnance Survey Licence Number: 100046668.

A9P09-CFJ-HML-M\_ML400\_ML-DR-RD-0003.dwg

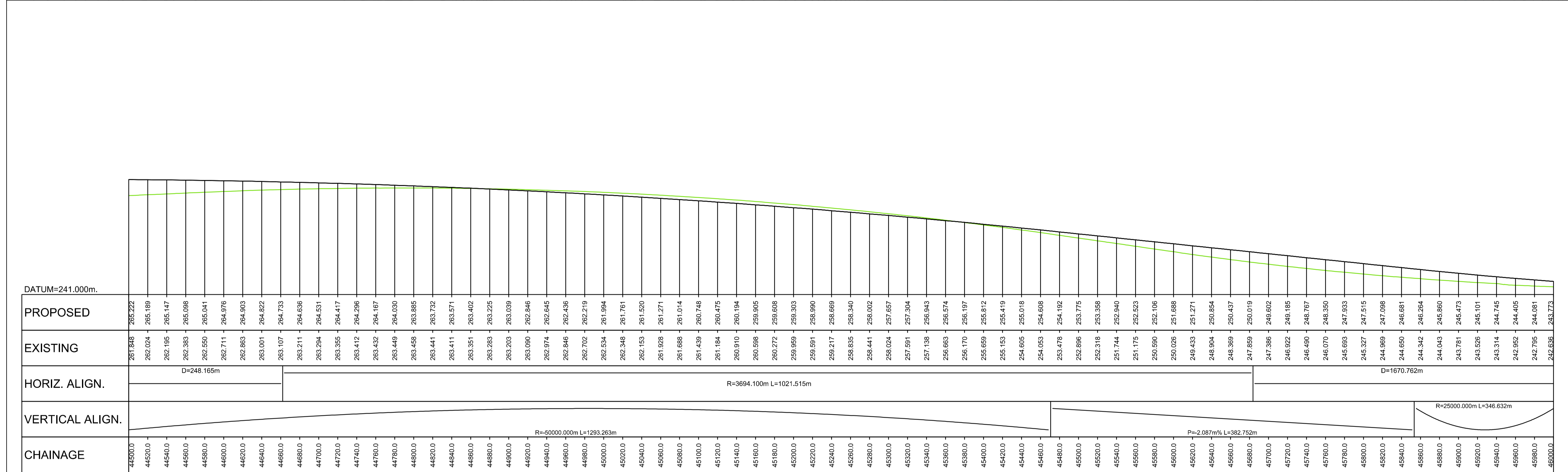


**GENERAL NOTES**

- All dimensions in metres unless stated otherwise.
- THE MAINLINE ALIGNMENTS INCORPORATE VARIED EARTHWORKS SLOPES. WHERE POSSIBLE EARTHWORKS SLOPES ACCOMMODATE LANDSCAPING CONSIDERATIONS. IN ADDITION, EARTHWORKS SLOPES ARE STEEPENED WHERE NECESSARY TO MINIMISE IMPACTS ON ADJACENT CONSTRAINTS SUCH AS THE RAILWAY AND WHERE ROCK CUTS ARE ANTICIPATED.

**LEGEND:**

- PROPOSED ROAD**
- EARTHWORKS CUTTING
  - EARTHWORKS FILL
  - SLOPE BETWEEN CARRIAGEWAYS
  - CARRIAGEWAY
  - VERGE / CENTRAL RESERVE
- KEY ENGINEERING CONSTRAINTS**
- RIVER / STREAM / LOCH
  - CFJV FLOOD MAPPING (1:200 YEAR)
  - MAJOR CULVERTS / WATERCOURSE STRUCTURE REFS
  - MINOR CULVERTS / WATERCOURSE STRUCTURE REFS
  - OTHER CULVERTS / WATERCOURSE STRUCTURE REFS
  - RAILWAY
  - BUILDINGS
  - EXISTING ROAD / FOOTPATH / CYCLE ROUTE
  - WATERCOURSE DIVERSION
  - EXISTING ROCK CUTTING
  - EXISTING ACCESS (TIER 1 A OR B)
  - EXISTING ACCESS (TIER 2 C OR UNCLASSIFIED)
  - EXISTING ACCESS (TIER 3 PRIVATE)
  - LISTED BUILDINGS (HS)



**LONG SECTION**

SCALE 1:2500H/1:500V

REV	SUIT	DATE	DESCRIPTION	BY	APP
P04	S4	24-07-18	Forth Issue		PL RG
P03	S4	09-04-18	Third Issue		PL RG
P02	S4	22-09-17	Second Issue		AC RG
P01	S4	10-11-16	First Issue		AC RG



CH2M HILL Fairhurst JV  
 C/O: City Park 368 Alexandra Parade Glasgow G3 3AU  
 Tel +44 (0)141 552 2000 Fax +44 (0)141 552 2525



**PROJECT 9 CRUBENMORE TO KIN CRAIG EIA PLAN AND PROFILE DRAWING 5.17 chainage 44500 - 46000**

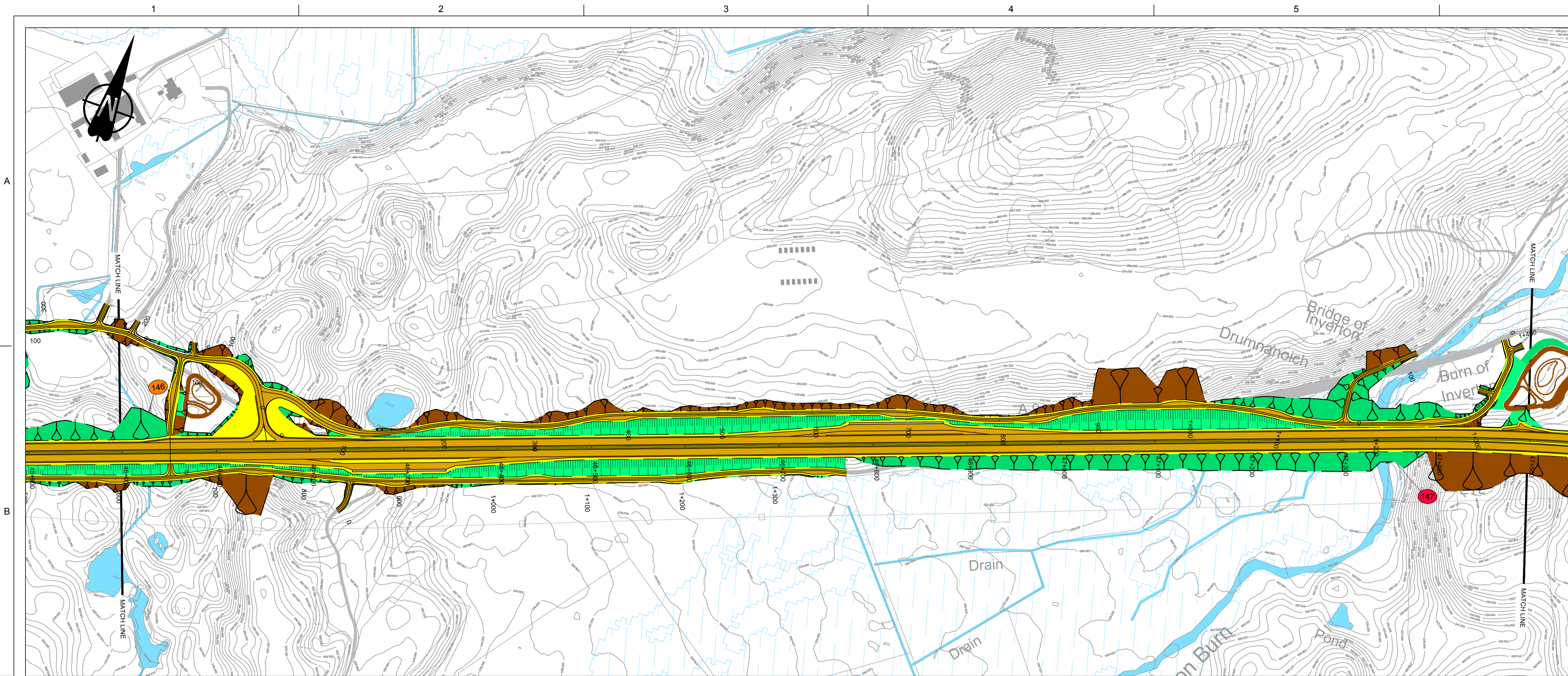
DESIGN:	DRAWN:	CHK:	APP:
A Campbell	A Campbell	C Southwell	R Gray

1:2500 at A1 (1:5000 at A3)

DATE:	10/11/16
PROJ:	495298
DWG:	A9P09-CFJ-EGN-M_ML445_ZZ-DR-EN-0001
SHEET:	4 of 12
REVISION:	C01
SUITABILITY:	A3

Reproduced by permission of Ordnance Survey on behalf of Her Majesty's Stationery Office. © Crown copyright and database right 2018. All rights reserved. Ordnance Survey Licence Number: 100046668.

A9P09-CFJ-HML-M\_ML400\_ML-DR-RD-0004.dwg



### GENERAL NOTES

- All dimensions in metres unless stated otherwise.
- THE MAINLINE ALIGNMENTS INCORPORATE VARIED EARTHWORKS SLOPES. WHERE POSSIBLE EARTHWORKS SLOPES ACCOMMODATE LANDSCAPING CONSIDERATIONS. IN ADDITION, EARTHWORKS SLOPES ARE STEEPENED WHERE NECESSARY TO MINIMISE IMPACTS ON ADJACENT CONSTRAINTS SUCH AS THE RAILWAY AND WHERE ROCK CUTS ARE ANTICIPATED.

- LEGEND:
- PROPOSED ROAD
- EARTHWORKS CUTTING
  - EARTHWORKS FILL
  - SLOPE BETWEEN CARRIAGEWAYS
  - CARRIAGEWAY
  - VERGE / CENTRAL RESERVE
- KEY ENGINEERING CONSTRAINTS
- RIVER / STREAM / LOCH
  - CFJV FLOOD MAPPING (1:200 YEAR)
  - MAJOR CULVERTS / WATERCOURSE STRUCTURE REFS
  - MINOR CULVERTS / WATERCOURSE STRUCTURE REFS
  - OTHER CULVERTS / WATERCOURSE STRUCTURE REFS
  - RAILWAY
  - BUILDINGS
  - EXISTING ROAD / FOOTPATH / CYCLE ROUTE
  - WATERCOURSE DIVERSION
  - EXISTING ROCK CUTTING
  - EXISTING ACCESS (TIER 1 A OR B)
  - EXISTING ACCESS (TIER 2 C OR UNCLASSIFIED)
  - EXISTING ACCESS (TIER 3 PRIVATE)
  - LISTED BUILDINGS (HS)



PROPOSED	EXISTING	HORIZ. ALIGN.	VERTICAL ALIGN.	CHAINAGE
242.836	242.836			46000.0
243.773	242.458			46200.0
243.773	242.326			46400.0
243.773	242.151			46600.0
243.773	242.021			46800.0
243.773	241.913			47000.0
243.773	241.786			47200.0
243.773	241.631			47400.0
243.773	241.597			47600.0
243.773	241.588			47800.0
243.773	241.574			48000.0
243.773	241.574			48200.0
243.773	241.574			48400.0
243.773	241.574			48600.0
243.773	241.574			48800.0
243.773	241.574			49000.0
243.773	241.574			49200.0
243.773	241.574			49400.0
243.773	241.574			49600.0
243.773	241.574			49800.0
243.773	241.574			50000.0
243.773	241.574			50200.0
243.773	241.574			50400.0
243.773	241.574			50600.0
243.773	241.574			50800.0
243.773	241.574			51000.0
243.773	241.574			51200.0
243.773	241.574			51400.0
243.773	241.574			51600.0
243.773	241.574			51800.0
243.773	241.574			52000.0
243.773	241.574			52200.0
243.773	241.574			52400.0
243.773	241.574			52600.0
243.773	241.574			52800.0
243.773	241.574			53000.0
243.773	241.574			53200.0
243.773	241.574			53400.0
243.773	241.574			53600.0
243.773	241.574			53800.0
243.773	241.574			54000.0
243.773	241.574			54200.0
243.773	241.574			54400.0
243.773	241.574			54600.0
243.773	241.574			54800.0
243.773	241.574			55000.0
243.773	241.574			55200.0
243.773	241.574			55400.0
243.773	241.574			55600.0
243.773	241.574			55800.0
243.773	241.574			56000.0
243.773	241.574			56200.0
243.773	241.574			56400.0
243.773	241.574			56600.0
243.773	241.574			56800.0
243.773	241.574			57000.0
243.773	241.574			57200.0
243.773	241.574			57400.0
243.773	241.574			57600.0
243.773	241.574			57800.0
243.773	241.574			58000.0
243.773	241.574			58200.0
243.773	241.574			58400.0
243.773	241.574			58600.0
243.773	241.574			58800.0
243.773	241.574			59000.0
243.773	241.574			59200.0
243.773	241.574			59400.0
243.773	241.574			59600.0
243.773	241.574			59800.0
243.773	241.574			60000.0
243.773	241.574			60200.0
243.773	241.574			60400.0
243.773	241.574			60600.0
243.773	241.574			60800.0
243.773	241.574			61000.0
243.773	241.574			61200.0
243.773	241.574			61400.0
243.773	241.574			61600.0
243.773	241.574			61800.0
243.773	241.574			62000.0
243.773	241.574			62200.0
243.773	241.574			62400.0
243.773	241.574			62600.0
243.773	241.574			62800.0
243.773	241.574			63000.0
243.773	241.574			63200.0
243.773	241.574			63400.0
243.773	241.574			63600.0
243.773	241.574			63800.0
243.773	241.574			64000.0
243.773	241.574			64200.0
243.773	241.574			64400.0
243.773	241.574			64600.0
243.773	241.574			64800.0
243.773	241.574			65000.0
243.773	241.574			65200.0
243.773	241.574			65400.0
243.773	241.574			65600.0
243.773	241.574			65800.0
243.773	241.574			66000.0
243.773	241.574			66200.0
243.773	241.574			66400.0
243.773	241.574			66600.0
243.773	241.574			66800.0
243.773	241.574			67000.0
243.773	241.574			67200.0
243.773	241.574			67400.0
243.773	241.574			67600.0
243.773	241.574			67800.0
243.773	241.574			68000.0
243.773	241.574			68200.0
243.773	241.574			68400.0
243.773	241.574			68600.0
243.773	241.574			68800.0
243.773	241.574			69000.0
243.773	241.574			69200.0
243.773	241.574			69400.0
243.773	241.574			69600.0
243.773	241.574			69800.0
243.773	241.574			70000.0
243.773	241.574			70200.0
243.773	241.574			70400.0
243.773	241.574			70600.0
243.773	241.574			70800.0
243.773	241.574			71000.0
243.773	241.574			71200.0
243.773	241.574			71400.0
243.773	241.574			71600.0
243.773	241.574			71800.0
243.773	241.574			72000.0
243.773	241.574			72200.0
243.773	241.574			72400.0
243.773	241.574			72600.0
243.773	241.574			72800.0
243.773	241.574			73000.0
243.773	241.574			73200.0
243.773	241.574			73400.0
243.773	241.574			73600.0
243.773	241.574			73800.0
243.773	241.574			74000.0
243.773	241.574			74200.0
243.773	241.574			74400.0
243.773	241.574			74600.0
243.773	241.574			74800.0
243.773	241.574			75000.0

LONG SECTION  
SCALE 1:2500H/1:500V

REV	SUIT	DATE	DESCRIPTION	BY	APP
P04	S4	24-07-18	Fourth Issue	PL	RG
P03	S4	09-04-18	Third Issue	PL	RG
P02	S4	22-09-17	Second Issue	AC	RG
P01	S4	10-11-16	First Issue	AC	RG

**ch2m FAIRHURST**  
CH2M HILL Fairhurst JV  
C/O: City Park 368 Alexandra Parade Glasgow G3 3AU  
Tel +44 (0)141 552 2000 Fax +44 (0)141 552 2525

**TRANSPORT SCOTLAND**  
**A9 DUALLING**  
PERTH TO INVERNESS  
Crossing to Kinross

PROJECT 9 CRUBENMORE TO KINRAIG EIA  
PLAN AND PROFILE  
DRAWING 5.18  
chainage 46000 - 47500

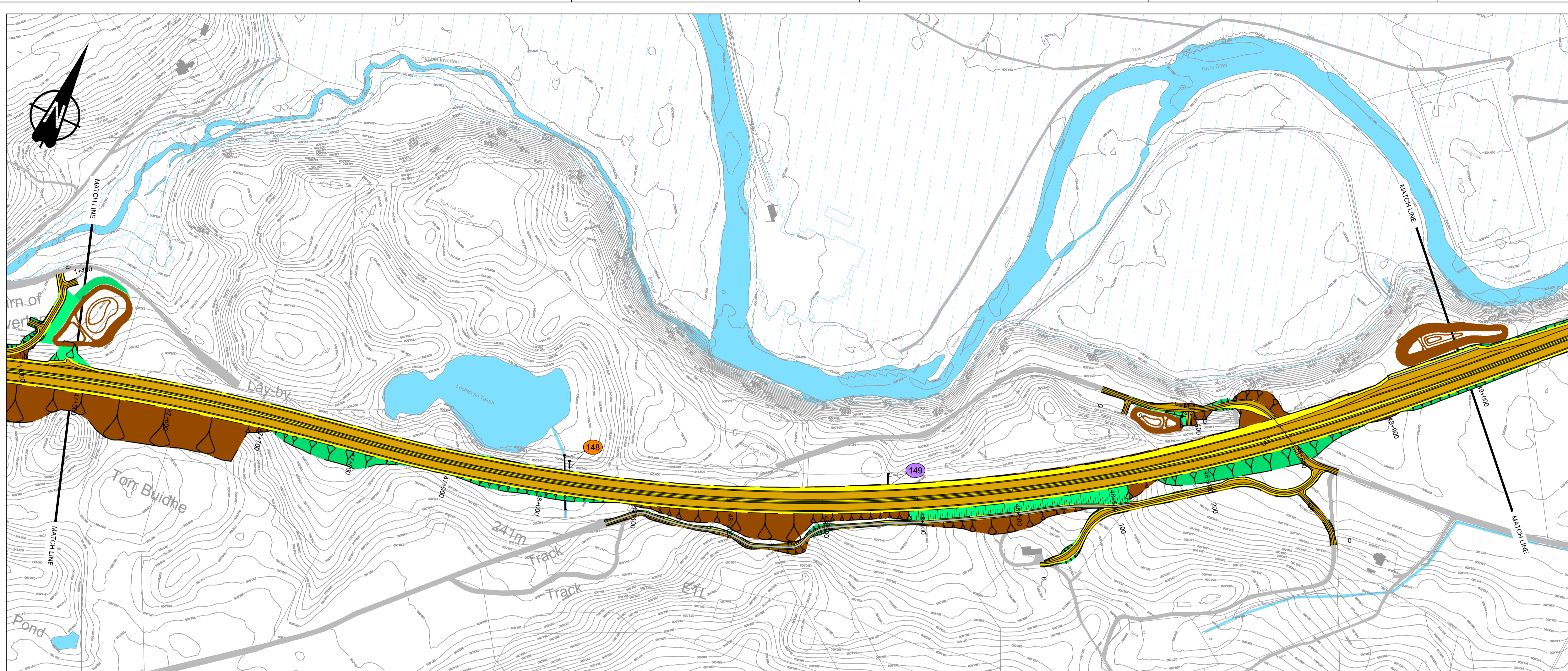
DESIGN:	DRAWN:	CHK:	APP:
A Campbell	A Campbell	C Southwell	R Gray

1:2500 at A1 (1:5000 at A3)

DATE:	10/11/16
PROJ:	495298
DWG:	A9P09-CFJ-EGN-M_ML460_ZR-DR-EN-0001
SHEET:	5 of 12
REVISION:	C01
SUITABILITY:	A3

Reproduced by permission of Ordnance Survey on behalf of Her Majesty's Stationery Office. © Crown copyright and database right 2018. All rights reserved. Ordnance Survey Licence Number: 100046668.

A9P09-CFJ-HML-M\_ML400\_ML-DR-RD-0005.dwg



**GENERAL NOTES**

- All dimensions in metres unless stated otherwise.
- THE MAINLINE ALIGNMENTS INCORPORATE VARIED EARTHWORKS SLOPES. WHERE POSSIBLE EARTHWORKS SLOPES ACCOMMODATE LANDSCAPING CONSIDERATIONS. IN ADDITION, EARTHWORKS SLOPES ARE STEEPENED WHERE NECESSARY TO MINIMISE IMPACTS ON ADJACENT CONSTRAINTS SUCH AS THE RAILWAY AND WHERE ROCK CUTS ARE ANTICIPATED.

**LEGEND:**

**PROPOSED ROAD**

- EARTHWORKS CUTTING
- EARTHWORKS FILL
- SLOPE BETWEEN CARRIAGEWAYS
- CARRIAGEWAY
- VERGE / CENTRAL RESERVE

**KEY ENGINEERING CONSTRAINTS**

- RIVER / STREAM / LOCH
- CFJV FLOOD MAPPING (1:200 YEAR)
- MAJOR CULVERTS / WATERCOURSE STRUCTURE REFS
- MINOR CULVERTS / WATERCOURSE STRUCTURE REFS
- OTHER CULVERTS / WATERCOURSE STRUCTURE REFS
- RAILWAY
- BUILDINGS
- EXISTING ROAD / FOOTPATH / CYCLE ROUTE
- WATERCOURSE DIVERSION
- EXISTING ROCK CUTTING
- EXISTING ACCESS (TIER 1 A OR B)
- EXISTING ACCESS (TIER 2 C OR UNCLASSIFIED)
- EXISTING ACCESS (TIER 3 PRIVATE)
- LISTED BUILDINGS (HS)



PROPOSED	EXISTING	HORIZ. ALIGN.	VERTICAL ALIGN.	CHAINAGE
237.056	238.303			47500.0
237.209	237.057			47520.0
237.362	237.362			47540.0
237.515	237.515			47560.0
237.668	237.589			47580.0
237.820	237.457			47600.0
237.973	237.571			47620.0
238.126	237.864			47640.0
238.279	237.993			47660.0
238.432	238.110			47680.0
238.585	238.317			47700.0
238.738	238.544			47720.0
238.890	238.420			47740.0
239.043	237.991			47760.0
239.196	237.975			47780.0
239.349	238.201			47800.0
239.502	238.567			47820.0
239.655	238.751			47840.0
239.808	239.547			47860.0
239.960	239.734			47880.0
240.113	240.000			47900.0
240.266	240.129			47920.0
240.419	240.129			47940.0
240.572	240.275			47960.0
240.725	240.467			47980.0
240.877	240.841			48000.0
241.030	240.770			48020.0
241.183	240.906			48040.0
241.336	241.059			48060.0
241.489	241.183			48080.0
241.642	241.251			48100.0
241.795	241.376			48120.0
241.947	241.652			48140.0
242.100	241.825			48160.0
242.253	241.945			48180.0
242.406	242.374			48200.0
242.559	242.885			48220.0
242.712	242.406			48240.0
242.864	242.875			48260.0
243.017	243.103			48280.0
243.170	243.503			48300.0
243.323	243.945			48320.0
243.476	244.359			48340.0
243.629	244.811			48360.0
243.782	244.759			48380.0
243.935	245.318			48400.0
244.088	245.172			48420.0
244.241	245.869			48440.0
244.394	246.229			48460.0
244.547	246.547			48480.0
244.700	246.676			48500.0
244.853	246.500			48520.0
245.006	246.351			48540.0
245.159	246.078			48560.0
245.312	246.096			48580.0
245.465	246.041			48600.0
245.618	246.148			48620.0
245.771	246.112			48640.0
245.924	245.274			48660.0
246.077	241.910			48680.0
246.230	239.537			48700.0
246.383	242.339			48720.0
246.536	239.663			48740.0
246.689	242.131			48760.0
246.842	239.365			48780.0
246.995	241.906			48800.0
247.148	238.943			48820.0
247.301	241.664			48840.0
247.454	239.045			48860.0
247.607	239.338			48880.0
247.760	239.243			48900.0
247.913	239.037			48920.0
248.066	239.038			48940.0
248.219	239.964			48960.0
248.372	239.164			48980.0
248.525	239.189			49000.0
248.678	238.702			
248.831	238.323			
248.984	237.788			
249.137	237.362			
249.290	237.596			
249.443	237.914			

**LONG SECTION**  
SCALE 1:2500H/1:500V

REV	SUIT	DATE	DESCRIPTION	BY	APP
P04	S4	24-07-18	Forth Issue	PL	RG
P03	S4	09-04-18	Third Issue	PL	RG
P02	S4	22-09-17	Second Issue	AC	RG
P01	S4	10-11-16	First Issue	AC	RG

**ch2m FAIRHURST**  
CH2M HILL Fairhurst JV  
C/O: City Park 368 Alexandra Parade Glasgow G3 3AU  
Tel +44 (0)141 552 2000 Fax +44 (0)141 552 2525

**TRANSPORT SCOTLAND**  
COMBINED A14  
**A9 DUALLING**  
PERTH TO INVERNESS  
Crucial to the Highlands

**PROJECT 9 CRUBENMORE TO KIN CRAIG EIA PLAN AND PROFILE DRAWING 5.19**  
chainage 47500 - 49000

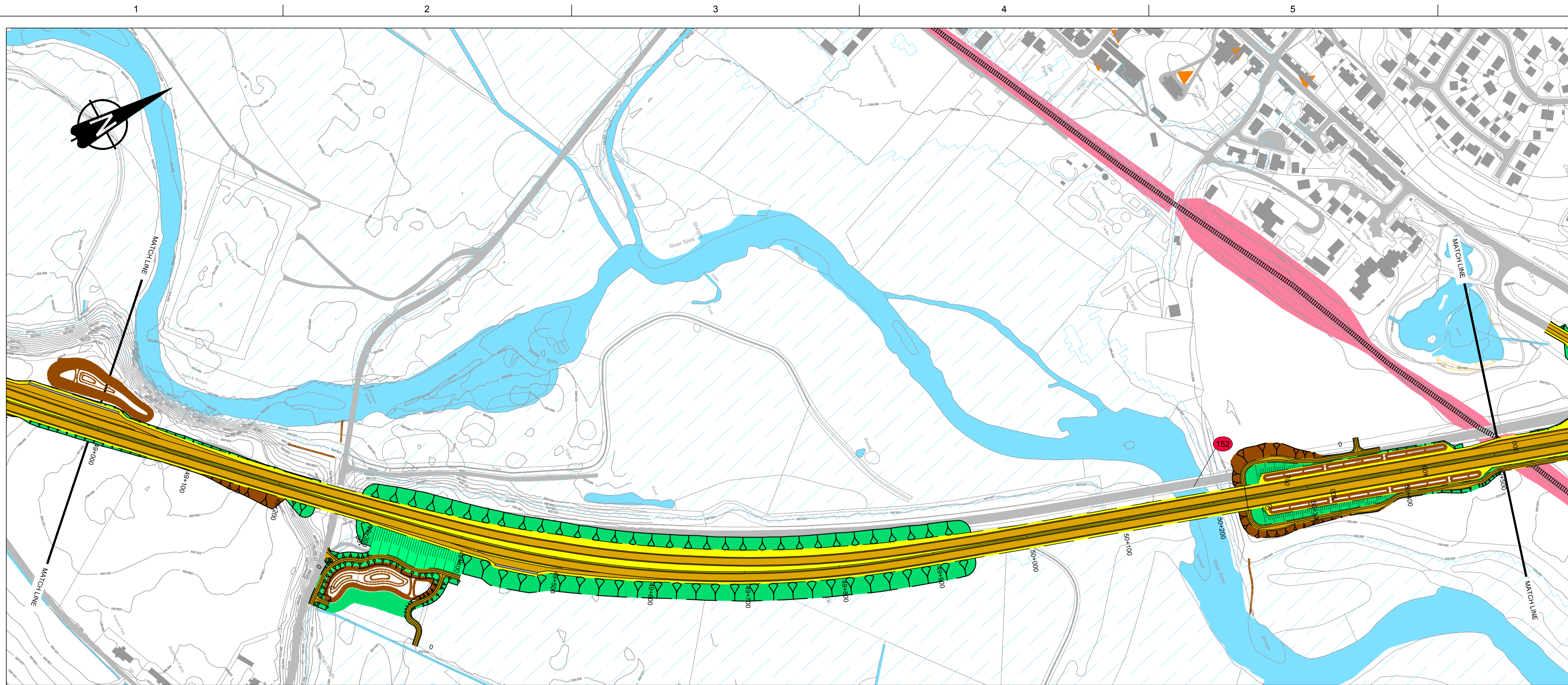
DESIGN:	DRAWN:	CHK:	APP:
A Campbell	A Campbell	C Southwell	R Gray

1:2500 at A1 (1:5000 at A3)

DATE:	10/11/16
PROJ:	495298
DWG:	A9P09-CFJ-EGN-M_ML475_ZZ-DR-EN-0001
SHEET:	6 of 12
REVISION:	C01
SUITABILITY:	A3

Reproduced by permission of Ordnance Survey on behalf of Her Majesty's Stationery Office. © Crown copyright and database right 2018. All rights reserved. Ordnance Survey Licence Number: 100046668.

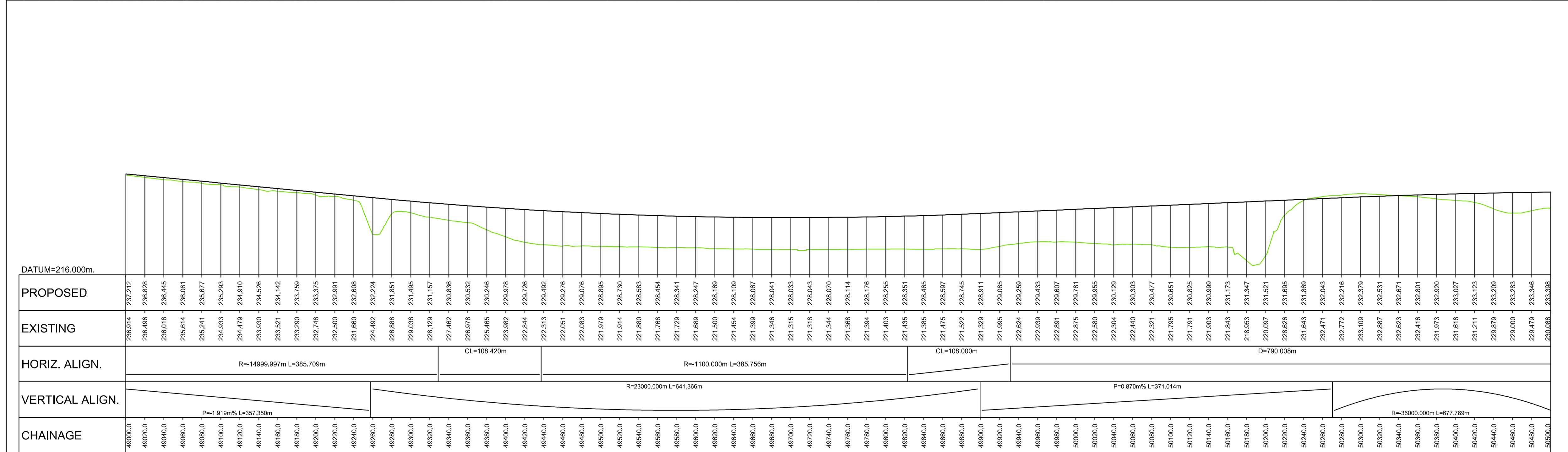
A9P09-CFJ-HML-M\_ML400\_ML-DR-RD-0006.dwg



**GENERAL NOTES**

- All dimensions in metres unless stated otherwise.
- THE MAINLINE ALIGNMENTS INCORPORATE VARIED EARTHWORKS SLOPES. WHERE POSSIBLE EARTHWORKS SLOPES ACCOMMODATE LANDSCAPING CONSIDERATIONS. IN ADDITION, EARTHWORKS SLOPES ARE STEEPENED WHERE NECESSARY TO MINIMISE IMPACTS ON ADJACENT CONSTRAINTS SUCH AS THE RAILWAY AND WHERE ROCK CUTS ARE ANTICIPATED.

- LEGEND:**
- PROPOSED ROAD**
- EARTHWORKS CUTTING
  - EARTHWORKS FILL
  - SLOPE BETWEEN CARRIAGEWAYS
  - CARRIAGEWAY
  - VERGE / CENTRAL RESERVE
- KEY ENGINEERING CONSTRAINTS**
- RIVER / STREAM / LOCH
  - CFJV FLOOD MAPPING (1:200 YEAR)
  - MAJOR CULVERTS / WATERCOURSE STRUCTURE REFS
  - MINOR CULVERTS / WATERCOURSE STRUCTURE REFS
  - OTHER CULVERTS / WATERCOURSE STRUCTURE REFS
  - RAILWAY
  - BUILDINGS
  - EXISTING ROAD / FOOTPATH / CYCLE ROUTE
  - WATERCOURSE DIVERSION
  - EXISTING ROCK CUTTING
  - EXISTING ACCESS (TIER 1 A OR B)
  - EXISTING ACCESS (TIER 2 C OR UNCLASSIFIED)
  - EXISTING ACCESS (TIER 3 PRIVATE)
  - LISTED BUILDINGS (HS)



**LONG SECTION**  
SCALE 1:2500H/1:500V

REV	SUIT	DATE	DESCRIPTION	BY	APP
P04	S4	24-07-18	Forth Issue	PL	RG
P03	S4	09-04-18	Third Issue	PL	RG
P02	S4	22-09-17	Second Issue	AC	RG
P01	S4	10-11-16	First Issue	AC	RG



CH2M HILL Fairhurst JV  
C/O: City Park 368 Alexandra Parade Glasgow G3 3AU  
Tel +44 (0)141 552 2000 Fax +44 (0)141 552 2525



**PROJECT 9 CRUBENMORE TO KIN CRAIG EIA PLAN AND PROFILE DRAWING 5.20**  
chainage 49000 - 50500

DESIGN:	DRAWN:	CHK:	APP:
A Campbell	A Campbell	C Southwell	R Gray

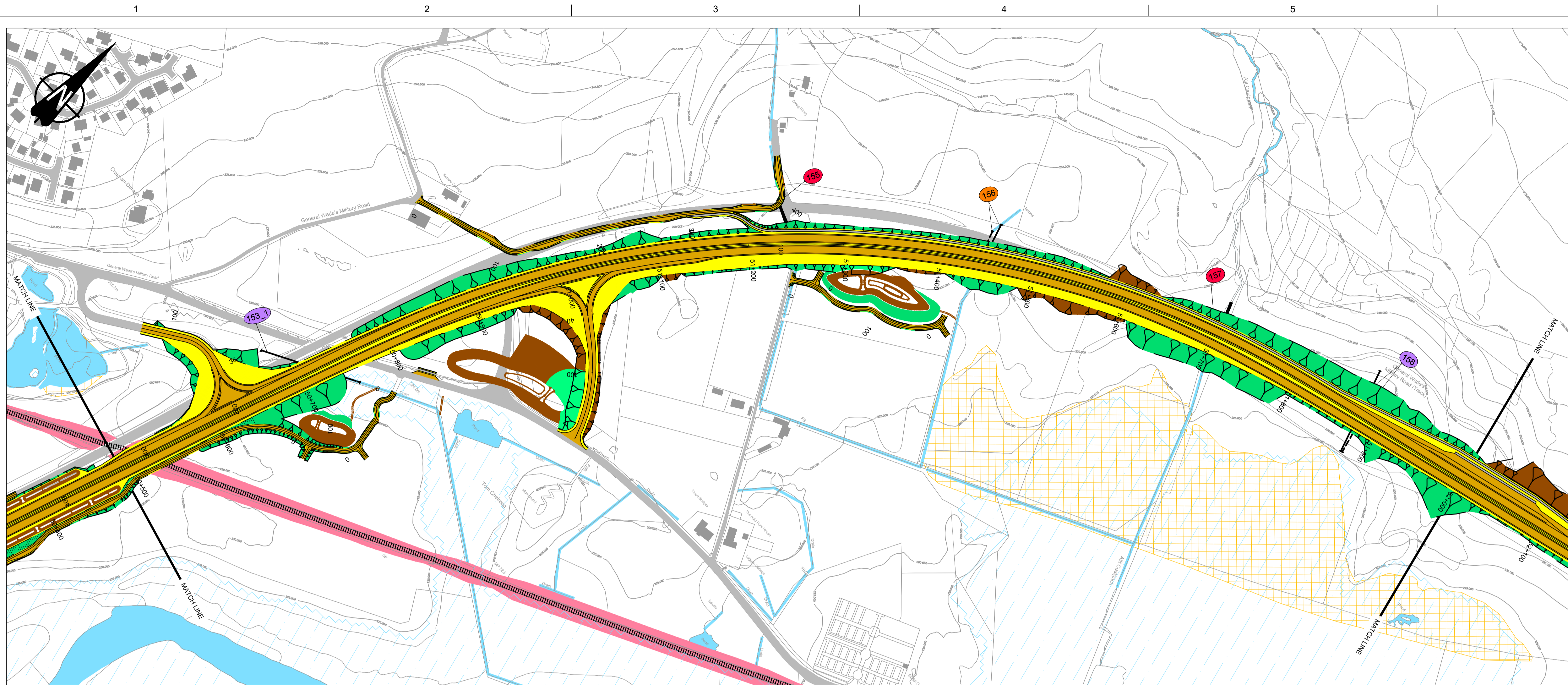
1:2500 at A1 (1:5000 at A3)

DATE:	10/11/16
PROJ:	495298
DWG:	A9P09-CFJ-EGN-M_ML490_ZZ-DR-EN-0001
SHEET:	7 of 12
REVISION:	C01
SUITABILITY:	A3

Reproduced by permission of Ordnance Survey on behalf of Her Majesty's Stationery Office. © Crown copyright and database right 2018. All rights reserved. Ordnance Survey Licence Number: 100046668.

A9P09-CFJ-HML-M\_ML400\_ML-DR-RD-0007.dwg

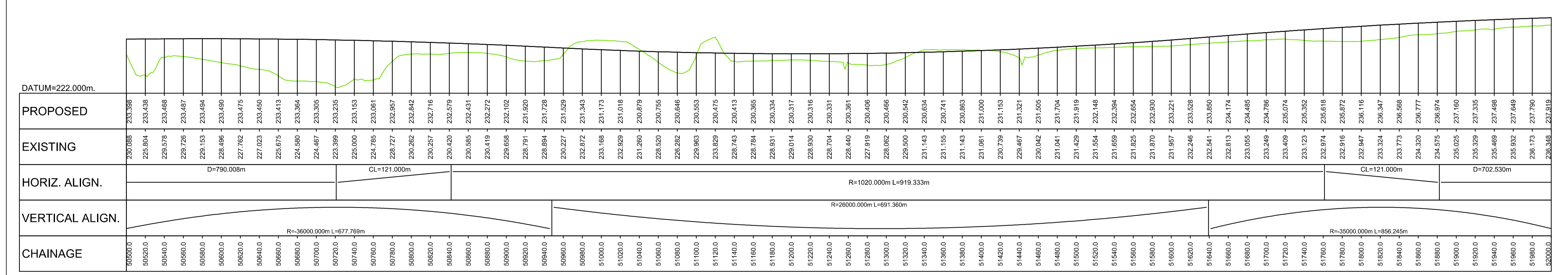




### GENERAL NOTES

- All dimensions in metres unless stated otherwise.
- THE MAINLINE ALIGNMENTS INCORPORATE VARIED EARTHWORKS SLOPES. WHERE POSSIBLE EARTHWORKS SLOPES ACCOMMODATE LANDSCAPING CONSIDERATIONS. IN ADDITION, EARTHWORKS SLOPES ARE STEEPENED WHERE NECESSARY TO MINIMISE IMPACTS ON ADJACENT CONSTRAINTS SUCH AS THE RAILWAY AND WHERE ROCK CUTS ARE ANTICIPATED.

- LEGEND:
- PROPOSED ROAD
- EARTHWORKS CUTTING
  - EARTHWORKS FILL
  - SLOPE BETWEEN CARRIAGEWAYS
  - CARRIAGEWAY
  - VERGE / CENTRAL RESERVE
- KEY ENGINEERING CONSTRAINTS
- RIVER / STREAM / LOCH
  - CFJV FLOOD MAPPING (1:200 YEAR)
  - MAJOR CULVERTS / WATERCOURSE STRUCTURE REFS
  - MINOR CULVERTS / WATERCOURSE STRUCTURE REFS
  - OTHER CULVERTS / WATERCOURSE STRUCTURE REFS
  - RAILWAY
  - BUILDINGS
  - EXISTING ROAD / FOOTPATH / CYCLE ROUTE
  - WATERCOURSE DIVERSION
  - EXISTING ROCK CUTTING
  - EXISTING ACCESS (TIER 1 A OR B)
  - EXISTING ACCESS (TIER 2 C OR UNCLASSIFIED)
  - EXISTING ACCESS (TIER 3 PRIVATE)
  - LISTED BUILDINGS (HS)



LONG SECTION  
SCALE 1:2500H/1:500V

REV	SUIT	DATE	DESCRIPTION	BY	APP
P04	S4	24-07-18	Forth Issue	PL	RG
P03	S4	09-04-18	Third Issue	PL	RG
P02	S4	22-09-17	Second Issue	AC	RG
P01	S4	10-11-16	First Issue	AC	RG



CH2M HILL Fairhurst JV  
C/O: City Park 368 Alexandra Parade Glasgow G3 3AU  
Tel +44 (0)141 552 2000 Fax +44 (0)141 552 2525



PROJECT 9 CRUBENMORE TO KIN CRAIG EIA PLAN AND PROFILE DRAWING 5.21 chainage 50500 - 52000

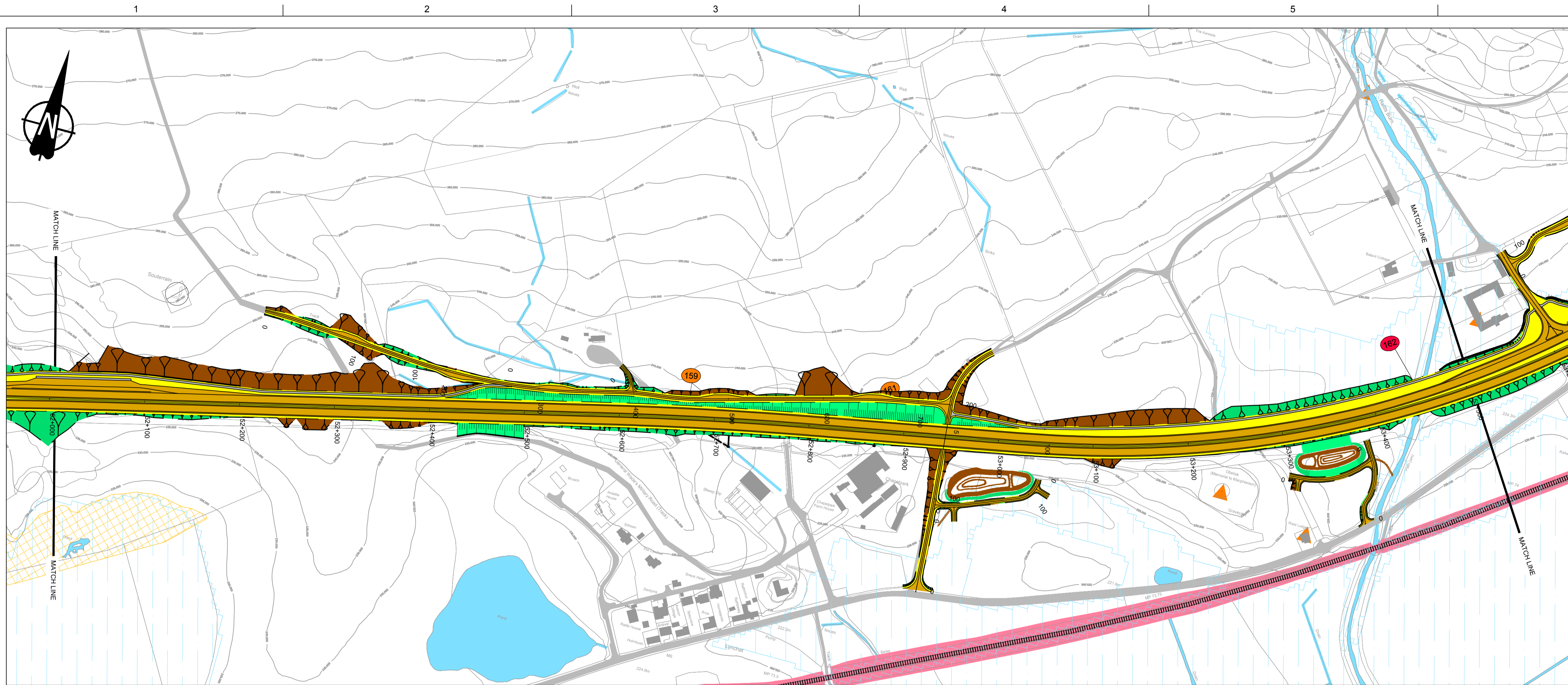
DESIGN:	DRAWN:	CHK:	APP:
A Campbell	A Campbell	C Southwell	R Gray

1:2500 at A1 (1:5000 at A3)

DATE:	10/11/16
PROJ:	495298
DWG:	A9P09-CFJ-EGN-M ML505 ZZ-DR-EN-0001
SHEET:	8 of 12
REVISION:	C01
SUITABILITY:	A3

Reproduced by permission of Ordnance Survey on behalf of Her Majesty's Stationery Office. © Crown copyright and database right 2018. All rights reserved. Ordnance Survey Licence Number: 100046668.

A9P09-CFJ-HML-M ML400 ML-DR-RD-0008.dwg



**GENERAL NOTES**

- All dimensions in metres unless stated otherwise.
- THE MAINLINE ALIGNMENTS INCORPORATE VARIED EARTHWORKS SLOPES. WHERE POSSIBLE EARTHWORKS SLOPES ACCOMMODATE LANDSCAPING CONSIDERATIONS. IN ADDITION, EARTHWORKS SLOPES ARE STEEPENED WHERE NECESSARY TO MINIMISE IMPACTS ON ADJACENT CONSTRAINTS SUCH AS THE RAILWAY AND WHERE ROCK CUTS ARE ANTICIPATED.

- LEGEND:**  
**PROPOSED ROAD**  
 EARTHWORKS CUTTING  
 EARTHWORKS FILL  
 SLOPE BETWEEN CARRIAGEWAYS  
 CARRIAGEWAY  
 VERGE / CENTRAL RESERVE  
**KEY ENGINEERING CONSTRAINTS**  
 RIVER / STREAM / LOCH  
 CFJV FLOOD MAPPING (1:200 YEAR)  
 MAJOR CULVERTS / WATERCOURSE STRUCTURE REFS  
 MINOR CULVERTS / WATERCOURSE STRUCTURE REFS  
 OTHER CULVERTS / WATERCOURSE STRUCTURE REFS  
 RAILWAY  
 BUILDINGS  
 EXISTING ROAD / FOOTPATH / CYCLE ROUTE  
 WATERCOURSE DIVERSION  
 EXISTING ROCK CUTTING  
 EXISTING ACCESS (TIER 1 A OR B)  
 EXISTING ACCESS (TIER 2 C OR UNCLASSIFIED)  
 EXISTING ACCESS (TIER 3 PRIVATE)  
 LISTED BUILDINGS (HS)



PROPOSED	EXISTING	HORIZ. ALIGN.	VERTICAL ALIGN.	CHAINAGE
236.348 236.490 236.646 236.787 236.918 236.996 237.096 237.167 237.214 237.266 237.289 237.303 237.315 237.320 237.315 237.287 237.249 237.199 237.145 237.074 236.954 236.851 236.742 236.619 236.566 236.322 236.167 236.010 235.698 235.550 235.359 235.258 235.292 234.703 234.676 234.550 234.437 233.524 233.156 232.286 233.166 233.095 232.896 232.519 232.390 232.144 231.960 231.788 231.515 231.407 231.187 230.795 230.569 230.413 230.260 230.030 229.900 229.749 229.575 229.443 229.336 229.192 229.012 228.779 228.705 228.605 228.482 228.329 228.218 228.132 228.144 228.085 227.936 227.797 227.702 227.601	238.036 238.142 238.237 238.320 238.392 238.452 238.501 238.538 238.564 238.579 238.582 238.574 238.554 238.523 238.480 238.428 238.361 238.284 238.196 238.096 237.985 237.863 237.729 237.583 237.427 237.267 237.107 236.947 236.787 236.627 236.466 236.295 236.103 235.891 235.659 235.407 235.138 234.844 234.532 234.200 233.848 233.495 233.154 232.827 232.514 232.214 231.927 231.653 231.393 231.148 230.912 230.692 230.485 230.291 230.111 229.944 229.790 229.650 229.523 229.409 229.309 229.222 229.148 229.088 229.041 229.007 228.985 228.959 228.921 228.876 228.822 228.759 228.689 228.607		D=702.530m R=35000.000m L=856.245m P=-0.800m% L=122.661m R=20000.000m L=200.909m D=174.523m CL=110.000m R=90000.000m L=512.577m R=1124.100m L=605.480m R=45000.000m L=391.944m	52000.0 52020.0 52040.0 52060.0 52100.0 52120.0 52140.0 52160.0 52180.0 52200.0 52220.0 52240.0 52260.0 52280.0 52300.0 52320.0 52340.0 52360.0 52380.0 52400.0 52420.0 52440.0 52460.0 52480.0 52500.0 52520.0 52540.0 52560.0 52580.0 52600.0 52620.0 52640.0 52660.0 52680.0 52700.0 52720.0 52740.0 52760.0 52780.0 52800.0 52820.0 52840.0 52860.0 52880.0 52900.0 52920.0 52940.0 52960.0 52980.0 53000.0 53020.0 53040.0 53060.0 53080.0 53100.0 53120.0 53140.0 53160.0 53180.0 53200.0 53220.0 53240.0 53260.0 53280.0 53300.0 53320.0 53340.0 53360.0 53380.0 53400.0 53420.0 53440.0 53460.0 53480.0 53500.0

**LONG SECTION**  
SCALE 1:2500H/1:500V

REV	SUIT	DATE	DESCRIPTION	BY	APP
P04	S4	24-07-18	Forth Issue	PL	RG
P03	S4	09-04-18	Third Issue	PL	RG
P02	S4	22-09-17	Second Issue	AC	RG
P01	S4	10-11-16	First Issue	AC	RG

**ch2m FAIRHURST**  
 CH2M HILL Fairhurst JV  
 C/O: City Park 368 Alexandra Parade Glasgow G3 3AU  
 Tel +44 (0)141 552 2000 Fax +44 (0)141 552 2525

**TRANSPORT SCOTLAND**  
 COMBINED A14  
**A9 DUALLING**  
 PERTH TO INVERNESS  
 Crubennore to Kincaig

**PROJECT 9 CRUBENMORE TO KINCAIG EIA PLAN AND PROFILE DRAWING 5.22 chainage 52000 - 53500**

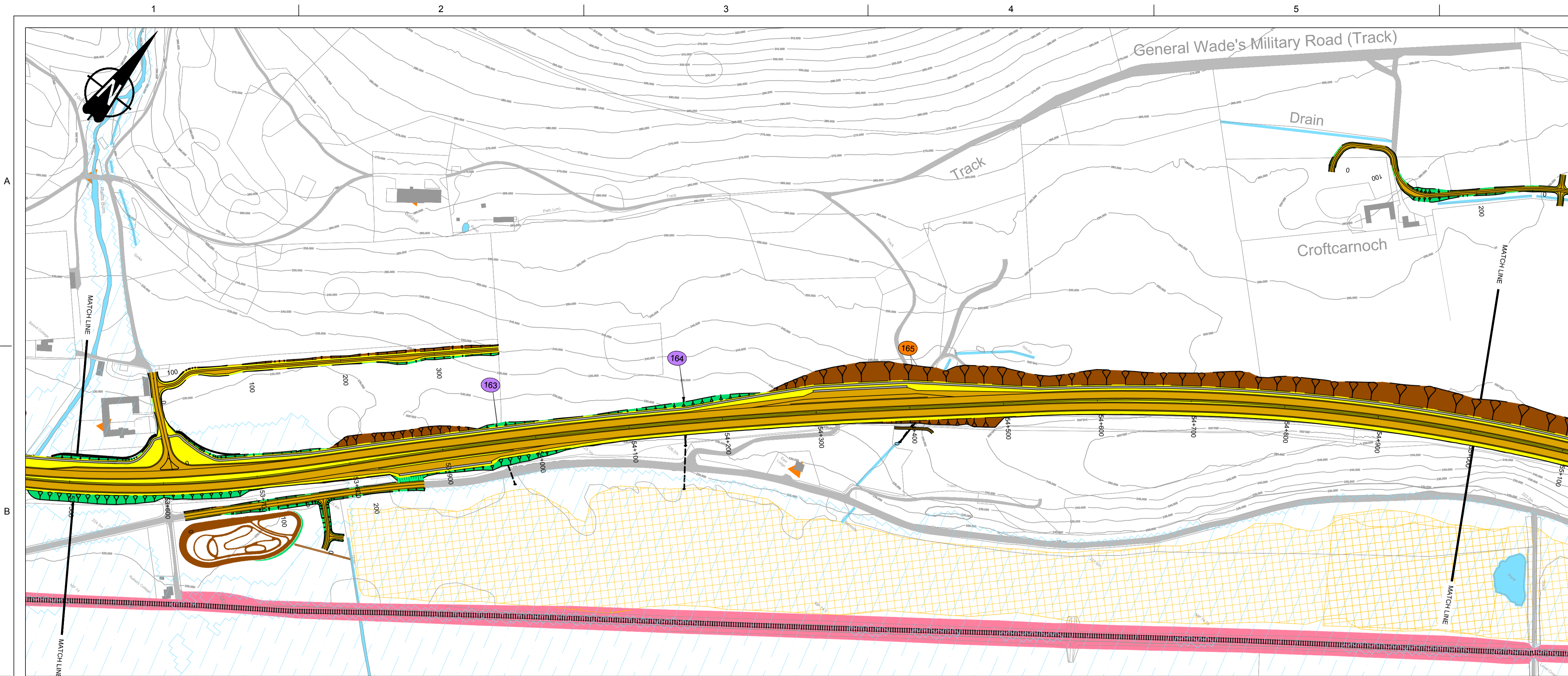
DESIGN:	DRAWN:	CHK:	APP:
A Campbell	A Campbell	C Southwell	R Gray

1:2500 at A1 (1:5000 at A3)

DATE:	10/11/16
PROJ:	495298
DWG:	A9P09-CFJ-EGN-M ML520 ZZ-DR-EN-0001
SHEET:	9 of 12
REVISION:	C01
SUITABILITY:	A3

Reproduced by permission of Ordnance Survey on behalf of Her Majesty's Stationery Office. © Crown copyright and database right 2018. All rights reserved. Ordnance Survey Licence Number: 100046668.

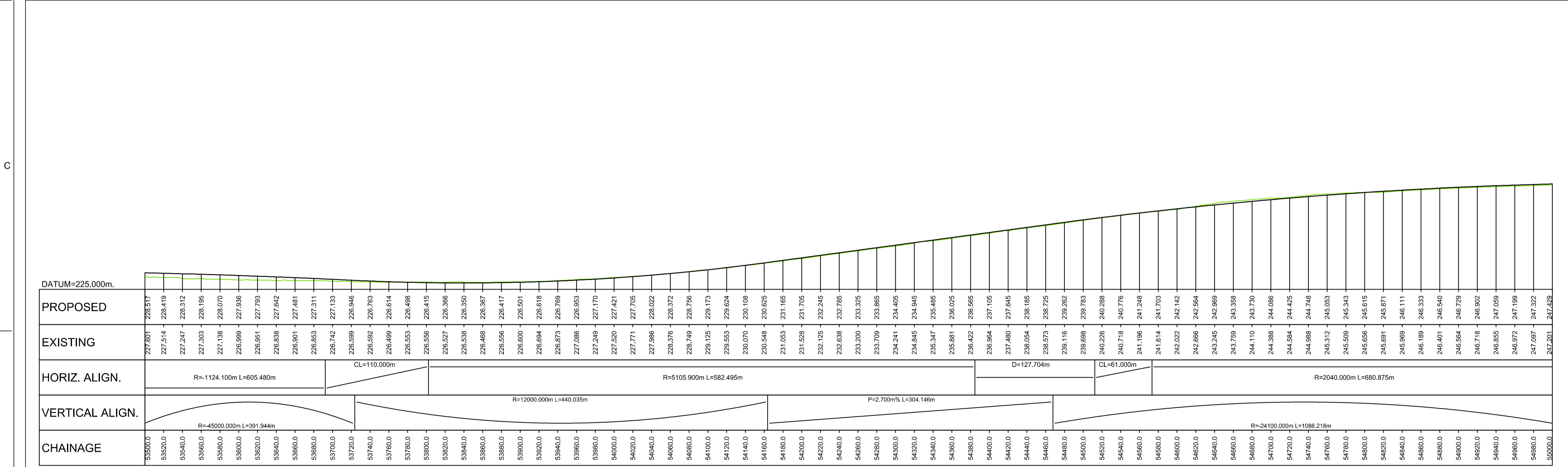
A9P09-CFJ-HML-M ML400 ML-DR-RD-0009.dwg



**GENERAL NOTES**

- All dimensions in metres unless stated otherwise.
- THE MAINLINE ALIGNMENTS INCORPORATE VARIED EARTHWORKS SLOPES. WHERE POSSIBLE EARTHWORKS SLOPES ACCOMMODATE LANDSCAPING CONSIDERATIONS. IN ADDITION, EARTHWORKS SLOPES ARE STEEPENED WHERE NECESSARY TO MINIMISE IMPACTS ON ADJACENT CONSTRAINTS SUCH AS THE RAILWAY AND WHERE ROCK CUTS ARE ANTICIPATED.

- LEGEND:**
- PROPOSED ROAD**
- EARTHWORKS CUTTING
  - EARTHWORKS FILL
  - SLOPE BETWEEN CARRIAGEWAYS
  - CARRIAGEWAY
  - VERGE / CENTRAL RESERVE
- KEY ENGINEERING CONSTRAINTS**
- RIVER / STREAM / LOCH
  - CFJV FLOOD MAPPING (1:200 YEAR)
  - MAJOR CULVERTS / WATERCOURSE STRUCTURE REFS
  - MINOR CULVERTS / WATERCOURSE STRUCTURE REFS
  - OTHER CULVERTS / WATERCOURSE STRUCTURE REFS
  - RAILWAY
  - BUILDINGS
  - EXISTING ROAD / FOOTPATH / CYCLE ROUTE
  - WATERCOURSE DIVERSION
  - EXISTING ROCK CUTTING
  - EXISTING ACCESS (TIER 1 A OR B)
  - EXISTING ACCESS (TIER 2 C OR UNCLASSIFIED)
  - EXISTING ACCESS (TIER 3 PRIVATE)
  - LISTED BUILDINGS (HS)



**LONG SECTION**  
SCALE 1:2500H/1:500V

REV	SUIT	DATE	DESCRIPTION	BY	APP
P04	S4	24-07-18	Forth Issue	PL	RG
P03	S4	09-04-18	Third Issue	PL	RG
P02	S4	22-09-17	Second Issue	AC	RG
P01	S4	10-11-16	First Issue	AC	RG



CH2M HILL Fairhurst JV  
C/O: City Park 368 Alexandra Parade Glasgow G3 3AU  
Tel +44 (0)141 552 2000 Fax +44 (0)141 552 2525



**PROJECT 9 CRUBENMORE TO KIN CRAIG EIA PLAN AND PROFILE DRAWING 5.23 chainage 53500 - 55000**

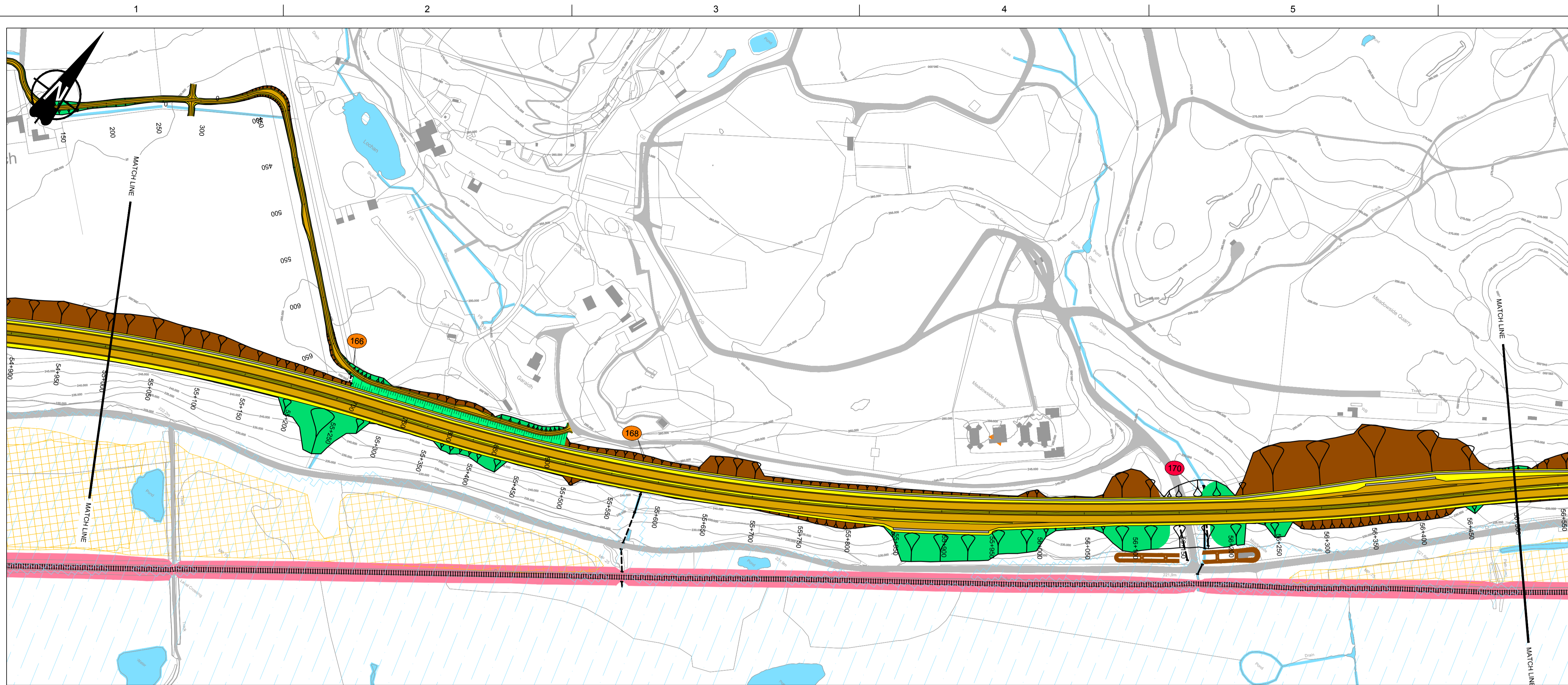
DESIGN:	DRAWN:	CHK:	APP:
A Campbell	A Campbell	C Southwell	R Gray

1:2500 at A1 (1:5000 at A3)

DATE: 10/11/16  
PROJ: 495298  
DWG: A9P09-CFJ-EGN-M ML535 ZZ-DR-EN-0001  
SHEET: 10 of 12 | REVISION: C01 | SUITABILITY: A3

Reproduced by permission of Ordnance Survey on behalf of Her Majesty's Stationery Office. © Crown copyright and database right 2018. All rights reserved. Ordnance Survey Licence Number: 100046668.

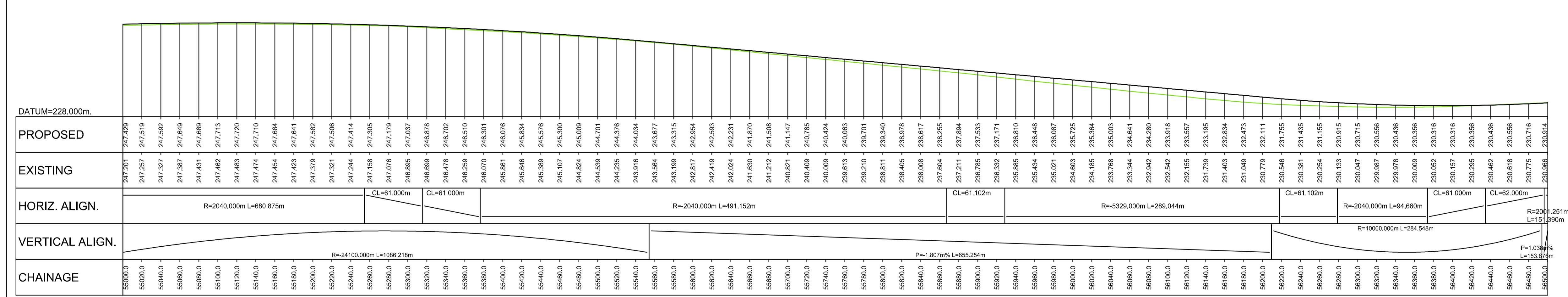
A9P09-CFJ-HML-M ML400 ML-DR-RD-0010.dwg



### GENERAL NOTES

- All dimensions in metres unless stated otherwise.
- THE MAINLINE ALIGNMENTS INCORPORATE VARIED EARTHWORKS SLOPES. WHERE POSSIBLE EARTHWORKS SLOPES ACCOMMODATE LANDSCAPING CONSIDERATIONS. IN ADDITION, EARTHWORKS SLOPES ARE STEEPENED WHERE NECESSARY TO MINIMISE IMPACTS ON ADJACENT CONSTRAINTS SUCH AS THE RAILWAY AND WHERE ROCK CUTS ARE ANTICIPATED.

- LEGEND:**
- PROPOSED ROAD
  - EARTHWORKS CUTTING
  - EARTHWORKS FILL
  - SLOPE BETWEEN CARRIAGEWAYS
  - CARRIAGEWAY
  - VERGE / CENTRAL RESERVE
  - KEY ENGINEERING CONSTRAINTS
  - RIVER / STREAM / LOCH
  - CFJV FLOOD MAPPING (1:200 YEAR)
  - MAJOR CULVERTS / WATERCOURSE STRUCTURE REFS
  - MINOR CULVERTS / WATERCOURSE STRUCTURE REFS
  - OTHER CULVERTS / WATERCOURSE STRUCTURE REFS
  - RAILWAY
  - BUILDINGS
  - EXISTING ROAD / FOOTPATH / CYCLE ROUTE
  - WATERCOURSE DIVERSION
  - EXISTING ROCK CUTTING
  - EXISTING ACCESS (TIER 1 A OR B)
  - EXISTING ACCESS (TIER 2 C OR UNCLASSIFIED)
  - EXISTING ACCESS (TIER 3 PRIVATE)
  - LISTED BUILDINGS (HS)



### LONG SECTION

SCALE 1:2500H/1:500V

REV	SUIT	DATE	DESCRIPTION	BY	APP
P04	S4	24-07-18	Fourth Issue	PL	RG
P03	S4	09-04-18	Third Issue	PL	RG
P02	S4	22-09-17	Second Issue	AC	RG
P01	S4	10-11-16	First Issue	AC	RG



CH2M HILL Fairhurst JV  
C/O: City Park 368 Alexandra Parade Glasgow G3 3AU  
Tel +44 (0)141 552 2000 Fax +44 (0)141 552 2525



### PROJECT 9 CRUBENMORE TO KINCRAIG EIA PLAN AND PROFILE DRAWING 5.24 chainage 55000 - 56500

DESIGN:	DRAWN:	CHK:	APP:
A Campbell	A Campbell	C Southwell	R Gray
1:2500 at A1 (1:5000 at A3)			
DATE:	10/11/16		
PROJ:	495298		
DWG:	A9P09-CFJ-EGN-M ML550 ZZ-DR-EN-0004		
SHEET:	11 of 12	REVISION:	C01
SUITABILITY:	A3		

Reproduced by permission of Ordnance Survey on behalf of Her Majesty's Stationery Office. © Crown copyright and database right 2018. All rights reserved. Ordnance Survey Licence Number: 100046668.

A9P09-CFJ-HML-M ML400 ML-DR-RD-0011.dwg

