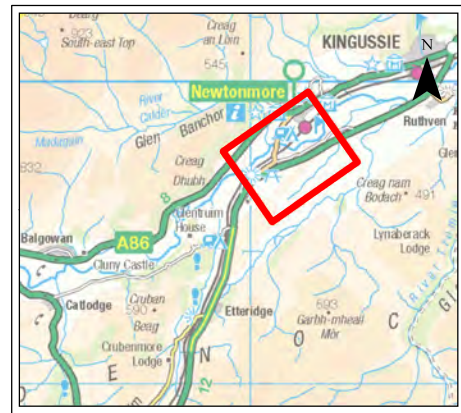
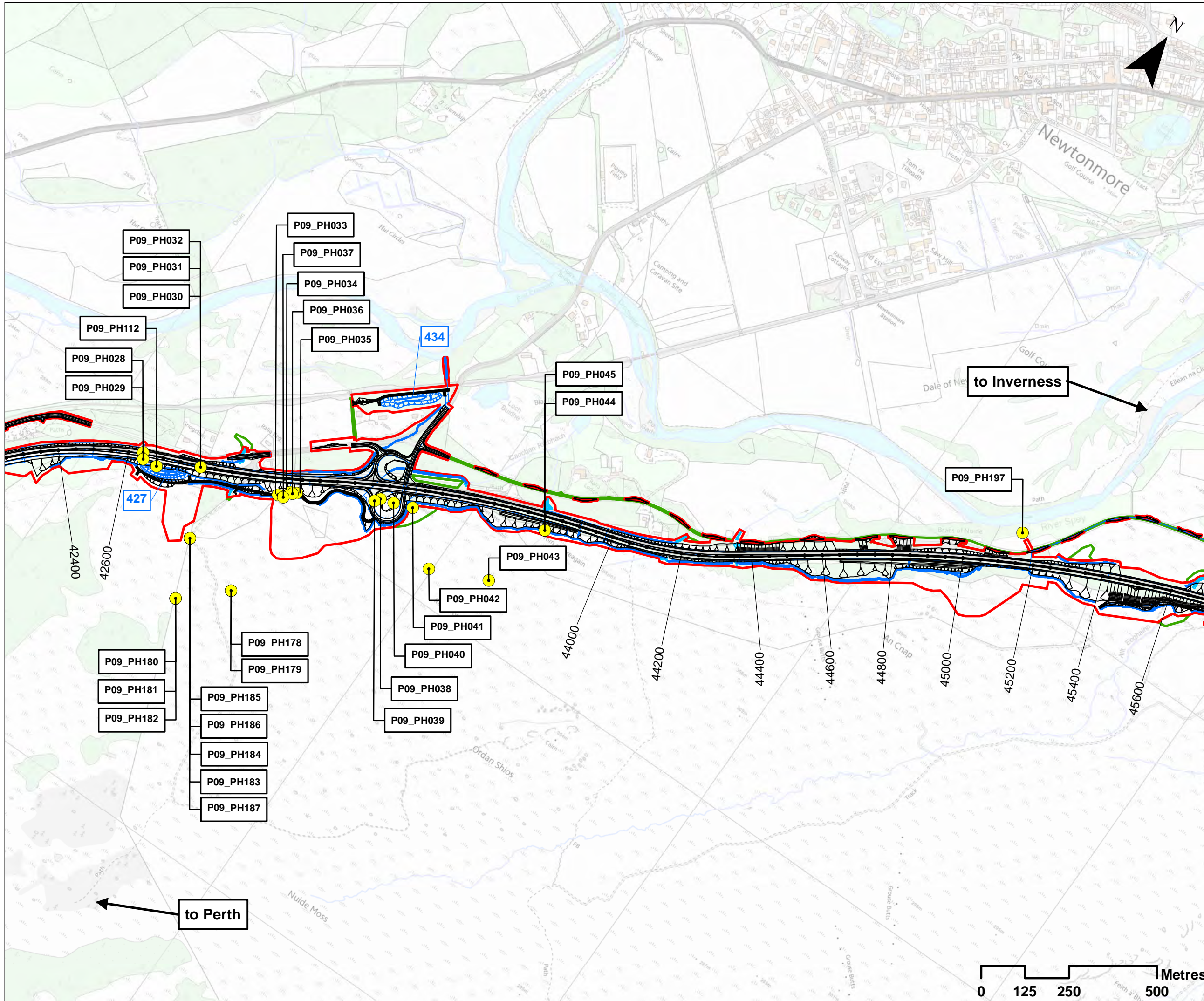


Geology, Soils and Groundwater Part 3

Drawing No.	Drawing Type	Drawing Title	Projectwise Drawing Reference	Software
10.1.1	ASSESSMENT PLAN	PEAT SURVEY WALKOVER PHOTOGRAPHS chainage 40000 to 42400	A9P09-CFJ-EGT-M_ML400_ZZ-DR-EN-0015	GIS
10.1.2	ASSESSMENT PLAN	PEAT SURVEY WALKOVER PHOTOGRAPHS chainage 42400 to 45600	A9P09-CFJ-EGT-M_ML424_ZZ-DR-EN-0001	GIS
10.1.3	ASSESSMENT PLAN	PEAT SURVEY WALKOVER PHOTOGRAPHS chainage 45600 to 48600	A9P09-CFJ-EGT-M_ML456_ZZ-DR-EN-0019	GIS
10.1.4	ASSESSMENT PLAN	PEAT SURVEY WALKOVER PHOTOGRAPHS chainage 48600 to 51800	A9P09-CFJ-EGT-M_ML486_ZZ-DR-EN-0021	GIS
10.1.5	ASSESSMENT PLAN	PEAT SURVEY WALKOVER PHOTOGRAPHS chainage 51800 to 55000	A9P09-CFJ-EGT-M_ML518_ZZ-DR-EN-0023	GIS
10.1.6	ASSESSMENT PLAN	PEAT SURVEY WALKOVER PHOTOGRAPHS chainage 55000 to 55645	A9P09-CFJ-EGT-M_ML550_ZZ-DR-EN-0001	GIS



- ### Legend
- Proposed Scheme Details
 - Watercourse Diversions
 - Drainage
 - SuDS ID
 - Assessment Boundary - Permanent Works
 - Assessment Boundary - Temporary Works
 - P09 Walkover Survey Photograph Locations
 - Photo ID

SCALE 1:10000

P03	S3	JUNE 18	FINAL REVISIONS	HA	JF
P02	S3	MAY 18	DESIGN UPDATE	HA	JF
P01	S3	APR 18	DRAFT FOR COMMENT	HA	JF
REV	SUIT	DATE	DESCRIPTION	BY	APP

ch2m: FAIRHURST
 CH2MHILL Fairhurst JV
 C/O: City Park 368 Alexandra Parade Glasgow G31 3AU
 Tel + 44 (0) 141 552 2000 Fax +44 (0) 141 552 2525



PROJECT 9 CRUBENMORE TO KINRAIG EIA ASSESSMENT PLAN DRAWING 10.1.2 PEAT SURVEY WALKOVER PHOTOGRAPHS chainage 42400 to 45600

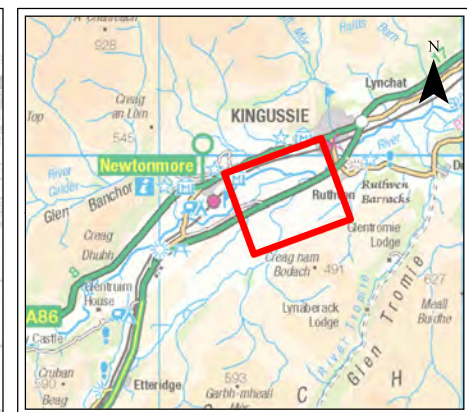
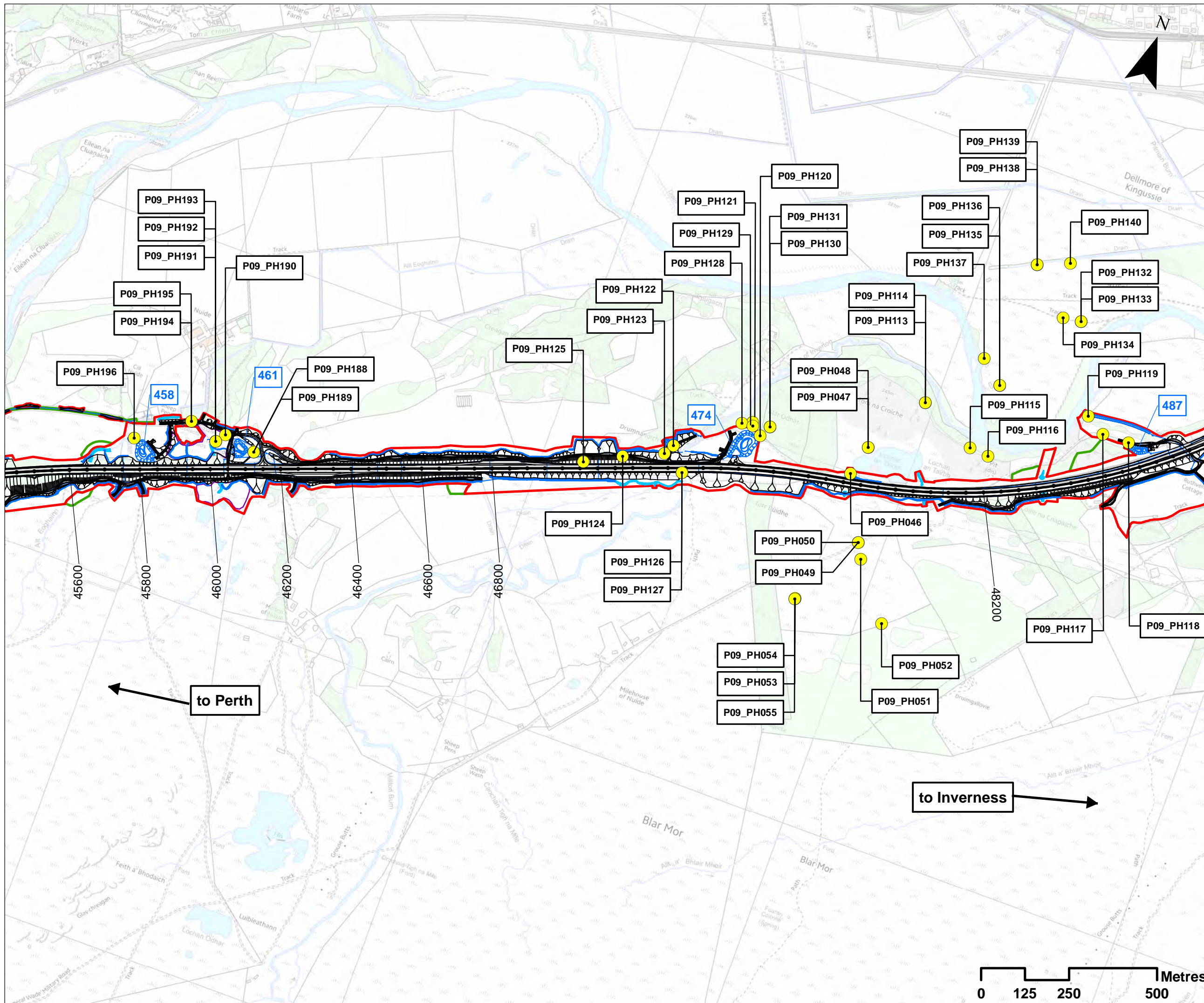
DESIGN:	DRAWN:	CHK:	APP:
CK	HA	CK	JF

DATE: 17/07/2018
 PROJ: 495298

DWG: A9P09-CFJ-EGT-M_ML424_ZZ-DR-EN-0001

SHEET:	REVISION:	SUITABILITY:
2 OF 6	C01	A3





Legend

- Proposed Scheme Details
- Watercourse Diversions
- Drainage
- SuDS ID
- Compensatory Storage Areas
- Assessment Boundary - Permanent Works
- Assessment Boundary - Temporary Works
- P09 Walkover Survey Photograph Locations
- Photo ID

SCALE 1:10000

P03	S3	JUNE 18	FINAL REVISIONS	HA	JF
P02	S3	MAY 18	DESIGN UPDATE	HA	JF
P01	S3	APR 18	DRAFT FOR COMMENT	HA	JF
REV	SUIT	DATE	DESCRIPTION	BY	APP



CH2MHILL Fairhurst JV
 C/O: City Park 368 Alexandra Parade Glasgow G31 3AU
 Tel + 44 (0) 141 552 2000 Fax +44 (0) 141 552 2525



**PROJECT 9 CRUBENMORE TO KINCRAIG EIA
 ASSESSMENT PLAN
 DRAWING 10.1.3
 PEAT SURVEY WALKOVER PHOTOGRAPHS
 chainage 45600 to 48600**

DESIGN: CK	DRAWN: HA	CHK: CK	APP: JF
---------------	--------------	------------	------------

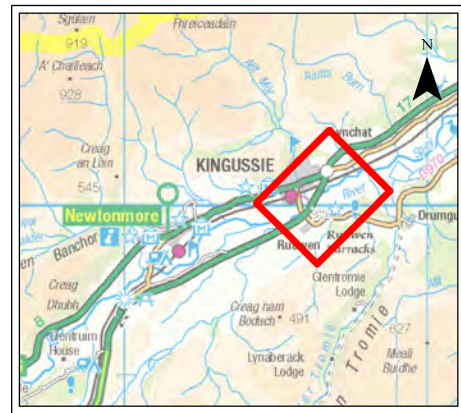
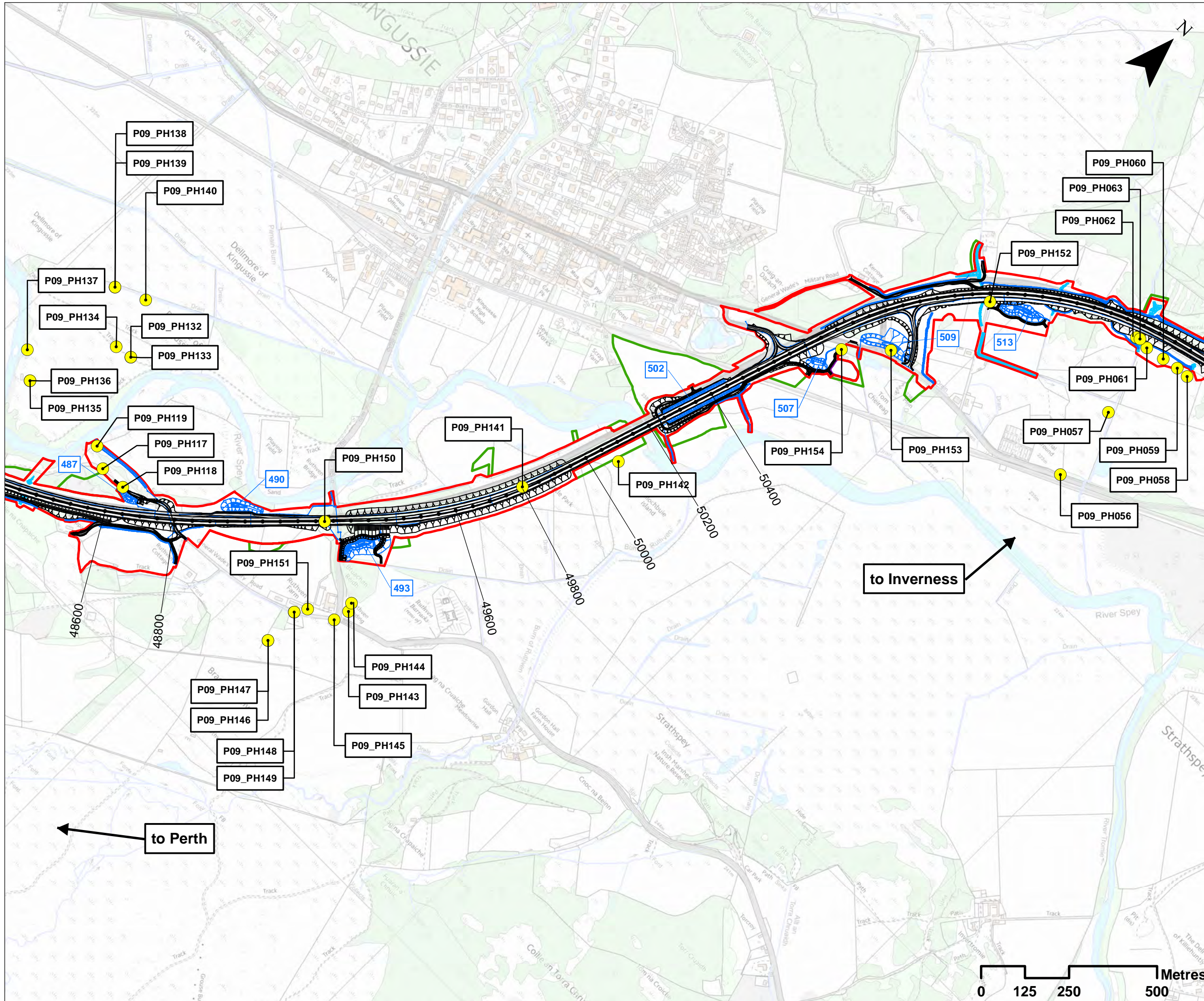
DATE: 19/07/2018
 PROJ: 495298

DWG: A9P09-CFJ-EGT-M_ML456_ZZ-DR-EN-0019

SHEET: 3 OF 6	REVISION: C01	SUITABILITY: A3
------------------	------------------	--------------------



Document Path: \\g:\p09\Geospatial\Projects\A9_Dualling\4_CMS\BIB\3\4_2_Maps\PEP\Chapter_10_Geology\Appendix10_1\Drawing_10_1_3.mxd



Legend

- Proposed Scheme Details
- Watercourse Diversions
- Drainage
- SuDS ID
- Compensatory Storage Areas
- Assessment Boundary - Permanent Works
- Assessment Boundary - Temporary Works
- P09 Walkover Survey Photograph Locations
- Photo ID

SCALE 1:10000

P03	S3	JUNE 18	FINAL REVISIONS	HA	JF
P02	S3	MAY 18	DESIGN UPDATE	HA	JF
P01	S3	APR 18	DRAFT FOR COMMENT	HA	JF
REV	SUI	DATE	DESCRIPTION	BY	APP



CH2MHILL Fairhurst JV
 C/O: City Park 368 Alexandra Parade Glasgow G31 3AU
 Tel + 44 (0) 141 552 2000 Fax +44 (0) 141 552 2525



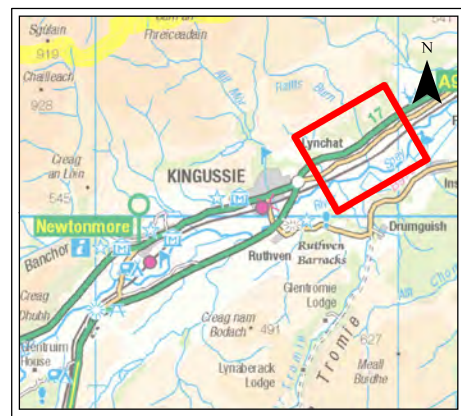
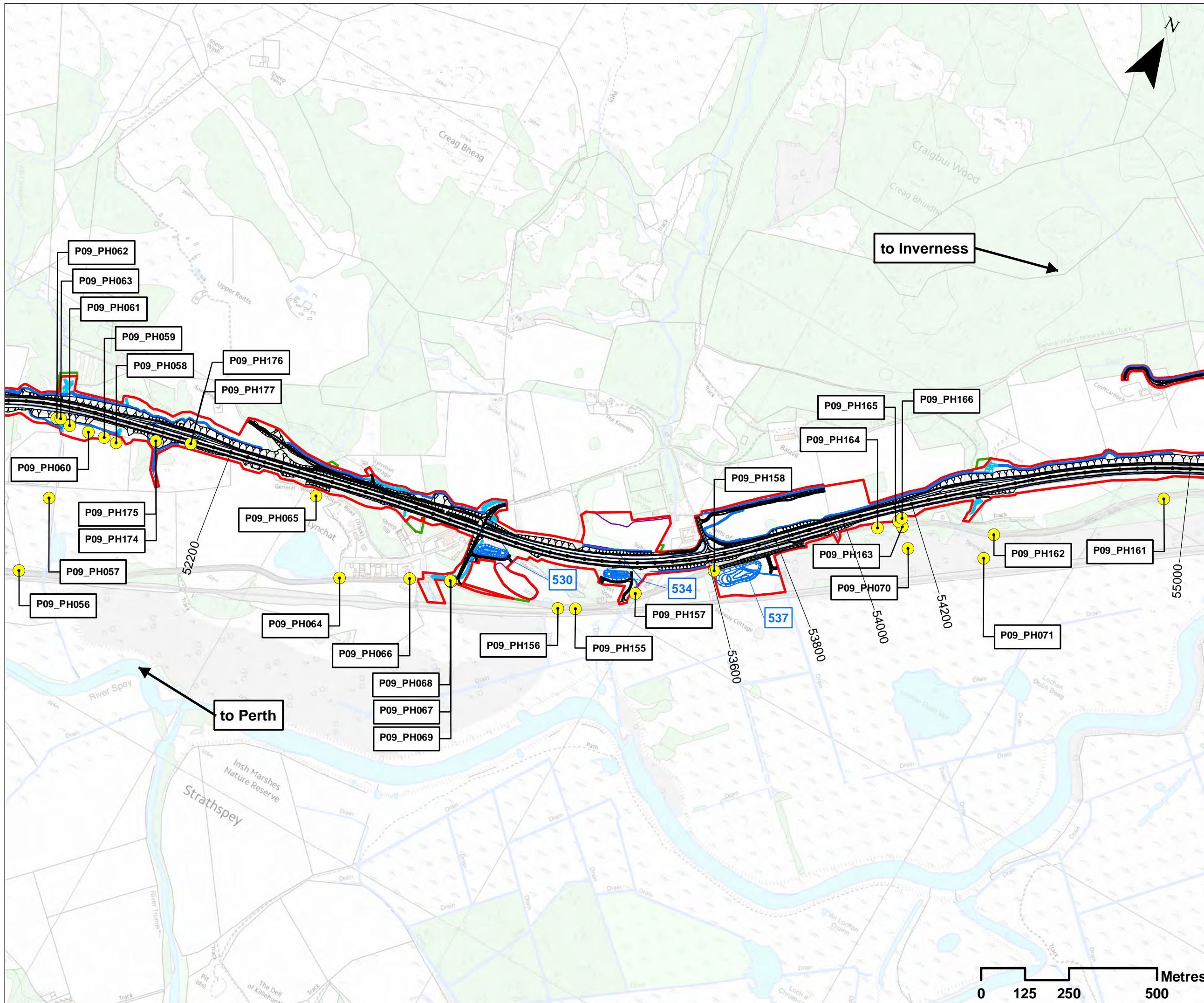
PROJECT 9 CRUBENMORE TO KINRAIG EIA ASSESSMENT PLAN
DRAWING 10.1.4
PEAT SURVEY WALKOVER PHOTOGRAPHS
 chainage 48600 to 51800

DESIGN: CK	DRAWN: HA	CHK: CK	APP: JF
---------------	--------------	------------	------------

DATE: 17/07/2018
 PROJ: 495298

DWG: A9P09-CFJ-EGT-M_ML486_ZZ-DR-EN-0021

SHEET: 4 OF 6	REVISION: C01	SUITABILITY: A3
------------------	------------------	--------------------



Legend

- Proposed Scheme Details
- Watercourse Diversions
- Drainage
- SuDS ID
- Compensatory Storage Areas
- Assessment Boundary - Permanent Works
- Assessment Boundary - Temporary Works
- P09 Walkover Survey Photograph Locations
- Photo ID

to Inverness

to Perth

SCALE 1:10000

P03	S3	JUNE 18	FINAL REVISIONS	HA	JF
P02	S3	MAY 18	DESIGN UPDATE	HA	JF
P01	S3	APR 18	DRAFT FOR COMMENT	HA	JF
REV	SUIT	DATE	DESCRIPTION	BY	APP

ch2m: FAIRHURST
 CH2MHILL Fairhurst JV
 C/O: City Park 368 Alexandra Parade Glasgow G31 3AU
 Tel + 44 (0) 141 552 2000 Fax +44 (0) 141 552 2525



PROJECT 9 CRUBENMORE TO KINRAIG EIA ASSESSMENT PLAN DRAWING 10.1.5 PEAT SURVEY WALKOVER PHOTOGRAPHS chainage 51800 to 55000

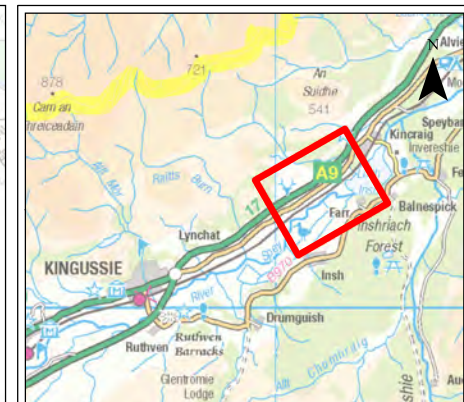
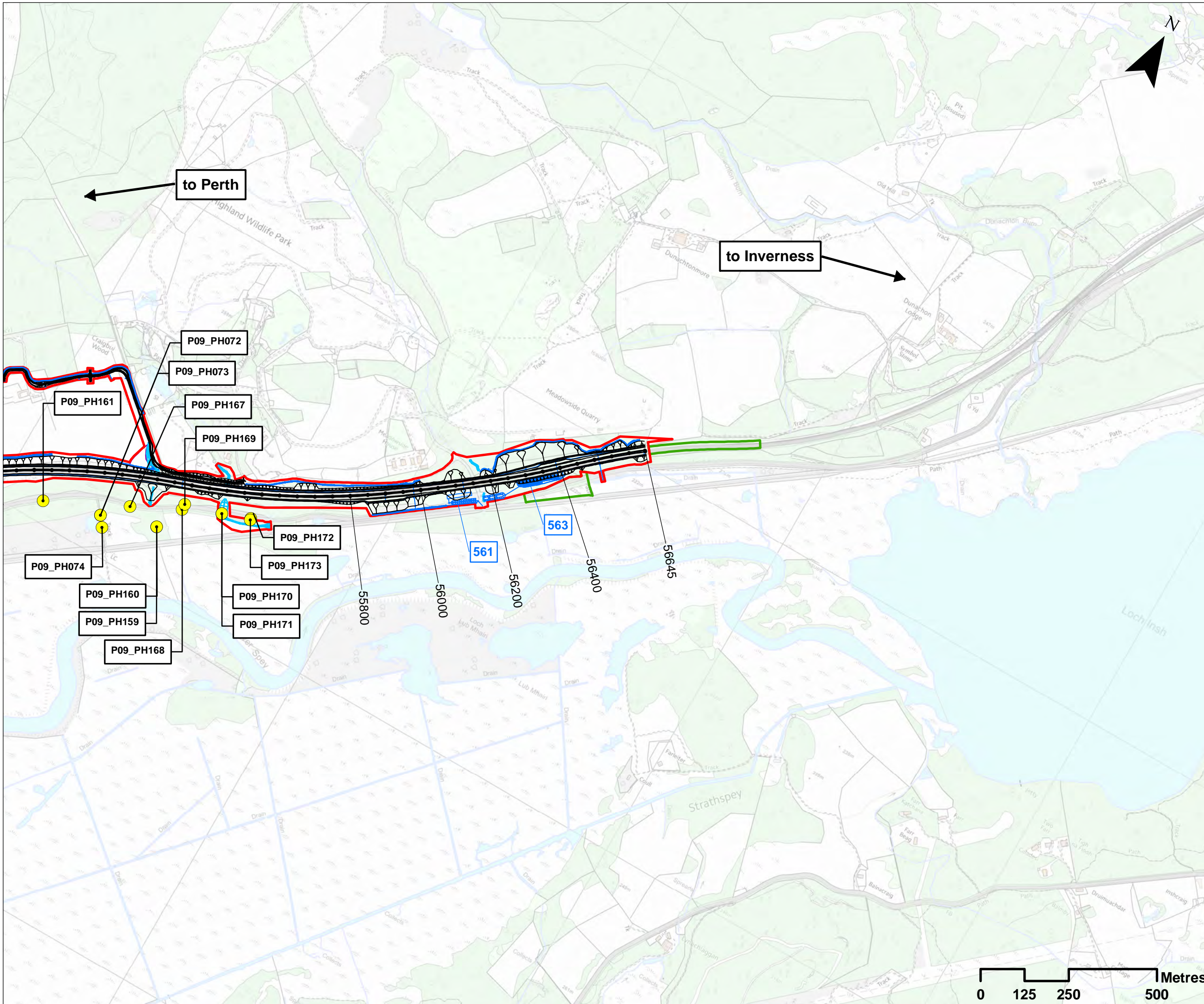
DESIGN: CK	DRAWN: HA	CHK: CK	APP: JF
---------------	--------------	------------	------------

DATE: 17/07/2018
 PROJ: 495298

DWG: A9P09-CFJ-EGT-M_ML518_ZZ-DR-EN-0023

SHEET: 5 OF 6	REVISION: C01	SUITABILITY: A3
------------------	------------------	--------------------





Legend

- Proposed Scheme Details
- Watercourse Diversions
- Drainage
- SuDS ID
- Compensatory Storage Areas
- Assessment Boundary - Permanent Works
- Assessment Boundary - Temporary Works
- P09 Walkover Survey Photograph Locations
- Photo ID

SCALE 1:10000

P03	S3	JUNE 18	FINAL REVISIONS	HA	JF
P02	S3	MAY 18	DESIGN UPDATE	HA	JF
P01	S3	APR 18	DRAFT FOR COMMENT	HA	JF
REV	SUIT	DATE	DESCRIPTION	BY	APP



CH2MHILL Fairhurst JV
 C/O: City Park 368 Alexandra Parade Glasgow G31 3AU
 Tel + 44 (0) 141 552 2000 Fax +44 (0) 141 552 2525



**PROJECT 9 CRUBENMORE TO KINCRAG EIA
 ASSESSMENT PLAN
 DRAWING 10.1.6
 PEAT SURVEY WALKOVER PHOTOGRAPHS
 chainage 55000 to 55645**

DESIGN: CK	DRAWN: HA	CHK: CK	APP: JF
---------------	--------------	------------	------------

DATE: 17/07/2018

PROJ: 495298

DWG: A9P09-CFJ-EGT-M_ML550_ZZ-DR-EN-0001

SHEET: 6 OF 6	REVISION: C01	SUITABILITY: A3
------------------	------------------	--------------------

