

Legend

- Route option
- 500m Buffer
- Borehole - The Moray Council
- Borehole - British Geological Survey

Artificial Deposits - Superficial

- Infilled Ground - Made Ground (Composition Unspecified), IG
- Landscaped Ground (Undivided) - Unknown Lithology, LGU
- Made Ground (Undivided) - Made Ground (Composition Unspecified), MGU
- Worked Ground (Undivided) - Void, WGU

Superficial Geology

- ALF-XVSZC, Alluvial Fan Deposits
- ALRT-XVSZC, Alluvium and River Terrace Deposits (Undifferentiated)
- ALV-XCZSV, Alluvium
- ARDS-XSZ, Ardersier Silts Formation
- BROCK, Bedrock at or near surface
- FINT-DMTN, Flinglack Till Formation
- GFDD-XVSZ, Glaciofluvial Deltaic Deposits
- GFDU-XVSZ, Glaciofluvial Deposits
- GFIC-XSV, Glaciofluvial Ice Contact Deposits
- GFIC-XVSZ, Glaciofluvial Ice Contact Deposits
- GFSU-V, Glaciofluvial Sub-Glacial Deposits
- GFTD-XSV, Glaciofluvial Terrace Deposits
- GLLD-XCZS, Glaciolacustrine Deposits
- GRHS-XSZC, Grange Hill Sand Formation
- HMGD-XDSV, Hummocky (Moundy) Glacial Deposits
- LDE-XCZS, Lacustrine
- LDE-XCZS, Lacustrine Deposits
- PEAT-P, Peat
- RMBDD-XVSZ, Raised Marine Beach Deposits
- RMD, Raised Marine Deposits
- RMD1-XSV, Raised Marine Deposits
- RMD2-XSV, Raised Marine Deposits
- RTDU-XVSZ, River Terrace Deposits (Undifferentiated)
- SUPNM-WATR, Superficial Theme Not Recorded
- TILLD-DMTN, Till Devensian

0 500 1000 Metres

CD1	27/11/2018	Approved as Stage Complete	JB	SR
Rev.	Rev. Date	Drawing Suitability	Drawn	Apprd

Mott MacDonald Sweco

Client

Project

**A96 DUALLING
HARDMUIR TO FOCHABERS**

Drawing Title

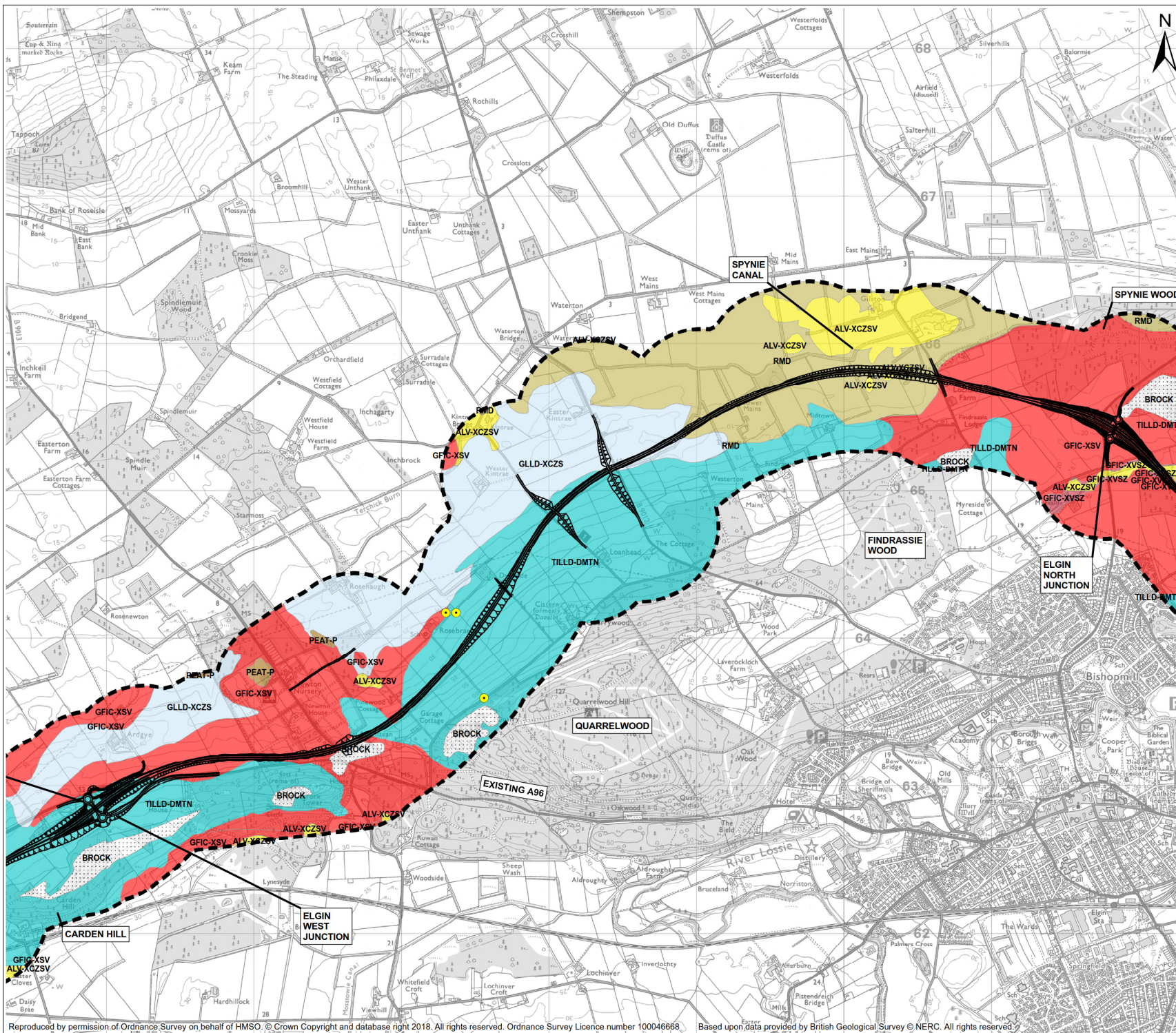
**FIGURE 6.9 HILLHEAD TO LHANBRYDE
NORTH OPTION SUPERFICIAL GEOLOGY
SHEET 1 OF 3**

Scale @ A3 1:25 000 DO NOT SCALE

Project No. 117780 Status A2

BIM No. A96PHF-MMS-EGT-00000-DR-GE-00005

This drawing should not be relied on or used in circumstances other than those for which it was originally prepared and for which the Mott MacDonald Sweco (MMS) Joint Venture was commissioned. MMS accepts no responsibility for this drawing to any party other than the person by whom it was commissioned. Any party which breaches the provisions of this disclaimer shall indemnify MMS for all loss or damage arising therefrom.



Legend

- Route option
- 500m Buffer
- Borehole - The Moray Council
- Borehole - British Geological Survey
- Artificial Deposits - Superficial
- Infilled Ground - Made Ground (Composition Unspecified), IG
- Landscaped Ground (Undivided) - Unknown Lithology, LGU
- Made Ground (Undivided) - Made Ground (Composition Unspecified), MGU
- Worked Ground (Undivided) - Void, WGU
- Superficial Geology
- ALF-XVSZC, Alluvial Fan Deposits
- ALRT-XVSZC, Alluvium and River Terrace Deposits (Undifferentiated)
- ALV-XCZSV, Alluvium
- ARDS-XSZ, Ardersier Silts Formation
- BROCK, Bedrock at or near surface
- FINT-DMTN, Flinglack Till Formation
- GFDD-XVSZ, Glaciofluvial Deltaic Deposits
- GFDU-XVSZ, Glaciofluvial Deposits
- GFIC-XSV, Glaciofluvial Ice Contact Deposits
- GFIC-XVSZ, Glaciofluvial Ice Contact Deposits
- GFSD-XSV, Glaciofluvial Sheet Deposits
- GFSD-XVSZ, Glaciofluvial Sheet Deposits
- GFUSU-V, Glaciofluvial Sub-Glacial Deposits
- GFUD-XSV, Glaciofluvial Terrace Deposits
- GLLD-XCZS, Glaciolacustrine Deposits
- GRHS-XSZC, Grange Hill Sand Formation
- HMGD-XDSV, Hummocky (Moundy) Glacial Deposits
- LDE-XCZS, Lacustrine
- LDE-XCZS, Lacustrine Deposits
- PEAT-P, Peat
- RMBDD-XVSZ, Raised Marine Beach Deposits
- RMD, Raised Marine Deposits
- R MDF1-XSV, Raised Marine Deposits
- R MDF2-XSV, Raised Marine Deposits
- RTDU-XVSZ, River Terrace Deposits (Undifferentiated)
- SUPNM-WATR, Superficial Theme Not Recorded
- TILLD-DMTN, Till Devensian

0 500 1,000 Metres

CD1	27/11/2018	Approved as Stage Complete	JB	SR
Rev.	Rev. Date	Drawing Suitability	Drawn	Apprd

Mott MacDonald Sweco



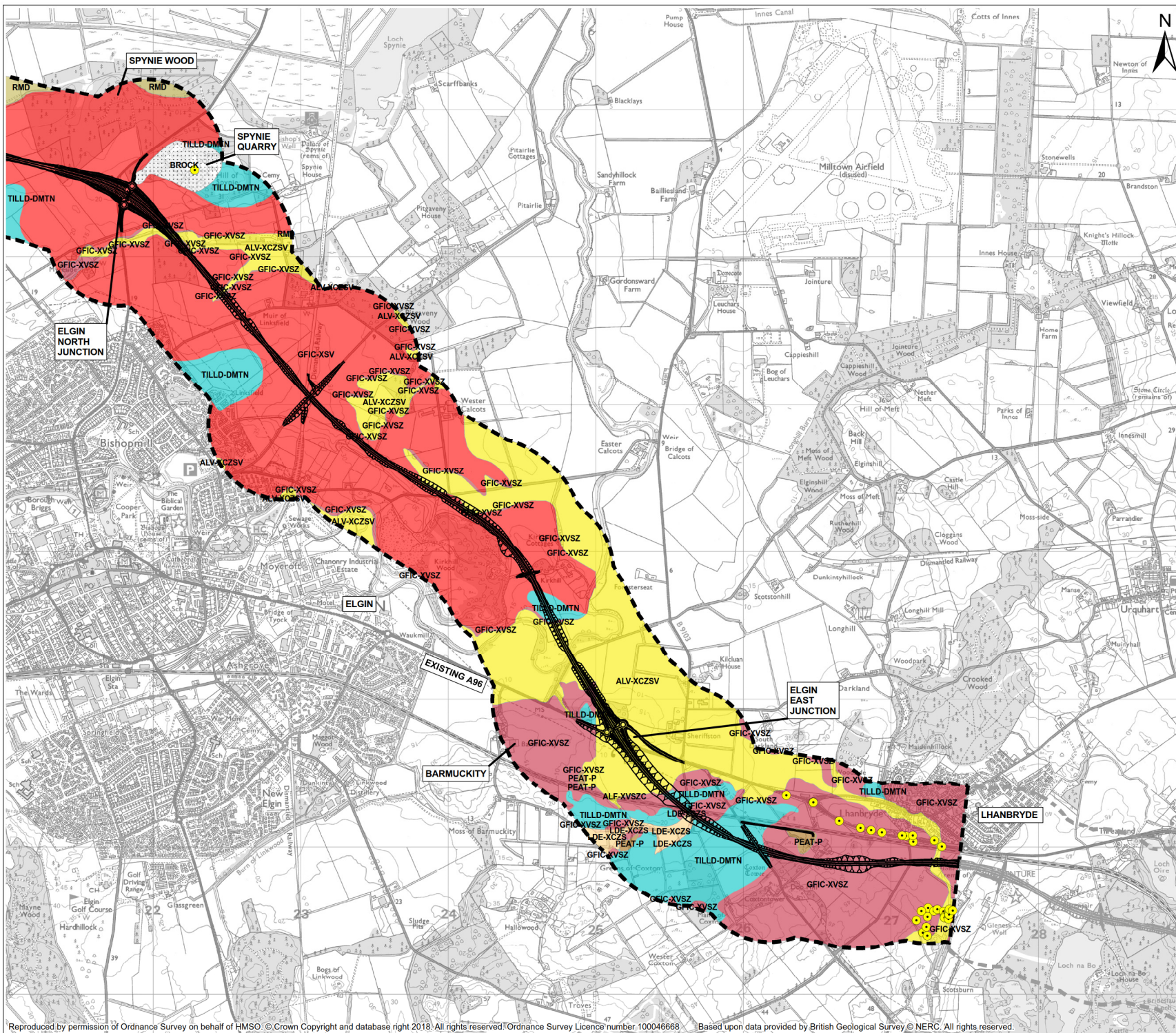
Client
A95 DUALLING
 HARDMUIR TO FOCHABERS

Project
A96 DUALLING
 HARDMUIR TO FOCHABERS

Drawing Title
FIGURE 6.10 HILLHEAD TO LHANBRYDE
NORTH OPTION SUPERFICIAL GEOLOGY
SHEET 2 OF 3

Scale @ A3	1:25,000	DO NOT SCALE
Project No.	117780	Status
BIM No.	A96PHF-MMS-EGT-00000-DR-GE-00006	A2

This drawing should not be relied on or used in circumstances other than those for which it was originally prepared and for which the Mott MacDonald Sweco (MMS) Joint Venture was commissioned. MMS accepts no responsibility for this drawing to any party other than the person by whom it was commissioned. Any party which breaches the provisions of this disclaimer shall indemnify MMS for all loss or damage arising therefrom.



Legend

- Route option
- 500m Buffer
- Borehole - The Moray Council
- Borehole - British Geological Survey

Artificial Deposits - Superficial

- Infilled Ground - Made Ground (Composition Unspecified), IG
- Landscaped Ground (Undivided) - Unknown Lithology, LGU
- Made Ground (Undivided) - Made Ground (Composition Unspecified), MGU
- Worked Ground (Undivided) - Void, WGU

Superficial Geology

- ALF-XVSZC, Alluvial Fan Deposits
- ALRT-XVSZC, Alluvium and River Terrace Deposits (Undifferentiated)
- ALV-XCZSV, Alluvium
- ARDS-XSZ, Ardersier Silts Formation
- BROCK, Bedrock at or near surface
- FINT-DMTN, Flinglack Till Formation
- GFDD-XVSZ, Glaciofluvial Deltaic Deposits
- GFDU-XVSZ, Glaciofluvial Deposits
- GFIC-XSV, Glaciofluvial Ice Contact Deposits
- GFIC-XVSZ, Glaciofluvial Ice Contact Deposits
- GFSD-XSV, Glaciofluvial Sheet Deposits
- GFSD-XVSZ, Glaciofluvial Sheet Deposits
- GFSSU-V, Glaciofluvial Sub-Glacial Deposits
- GFTD-XSV, Glaciofluvial Terrace Deposits
- GLLD-XCZS, Glaciolacustrine Deposits
- GRHS-XSZC, Grange Hill Sand Formation
- HMGD-XDSV, Hummocky (Moundy) Glacial Deposits
- LDE-XCZS, Lacustrine
- LDE-XCZS, Lacustrine Deposits
- PEAT-P, Peat
- RMBDD-XVSZ, Raised Marine Beach Deposits
- RMD, Raised Marine Deposits
- RMD1-XSV, Raised Marine Deposits
- RMD2-XSV, Raised Marine Deposits
- RTDU-XVSZ, River Terrace Deposits (Undifferentiated)
- SUPNM-WATR, Superficial Theme Not Recorded
- TILLD-DMTN, Till Devensian

0 500 1,000 Metres

CD1	27/11/2018	Approved as Stage Complete	JB	SR
Rev	Rev Date	Drawing Suitability	Drawn	Apprd

Mott MacDonald Sweco

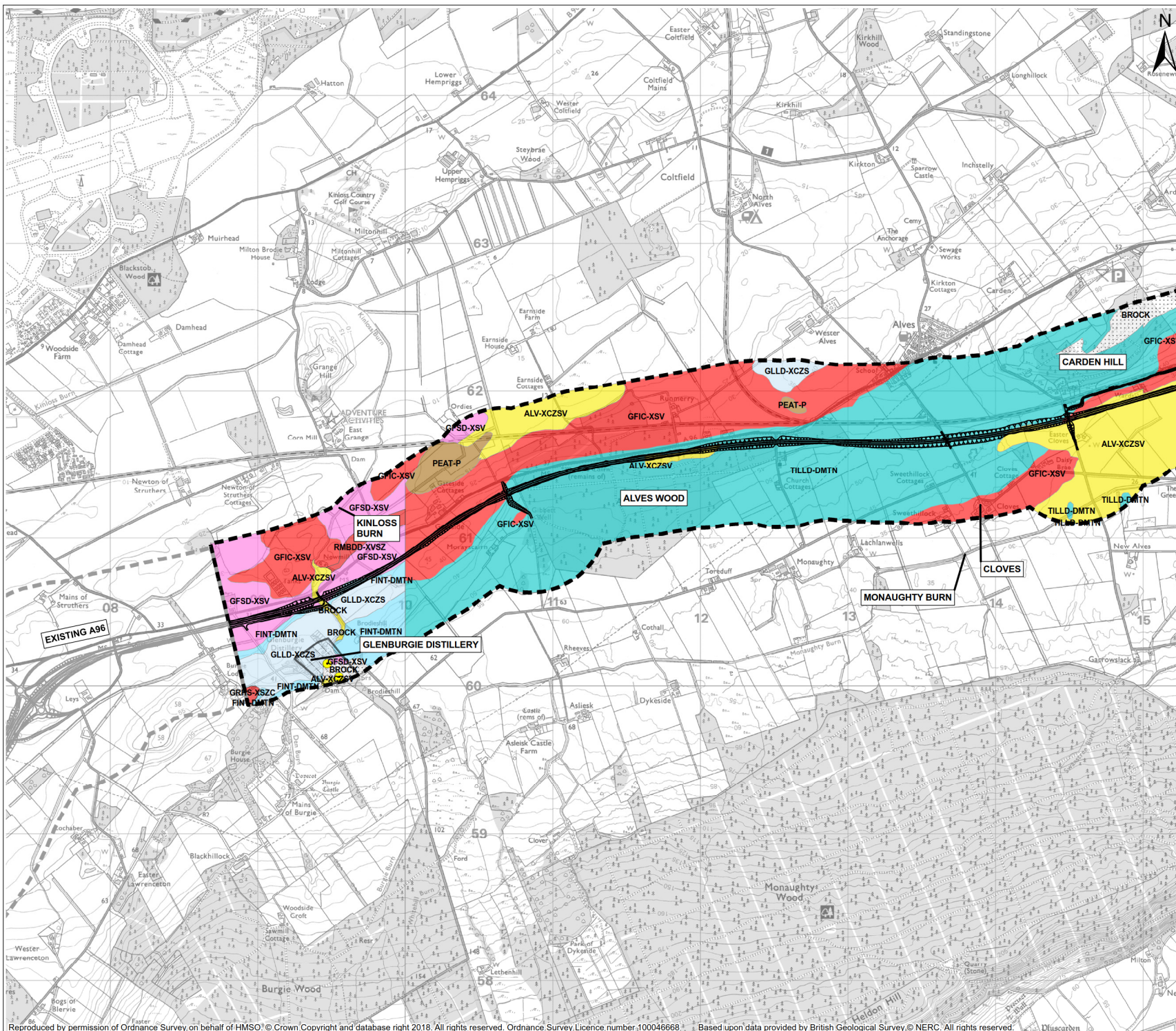


Client
**A96 DUALLING
 HARDMUIR TO FOCHABERS**

Drawing Title
**FIGURE 6.11 HILLHEAD TO LHANBRYDE
 NORTH OPTION SUPERFICIAL GEOLOGY
 SHEET 3 OF 3**

Scale @ A3	1:25,000	DO NOT SCALE
Project No.	117780	Status
BIM No.	A96PHF-MMS-EGT-00000-DR-GE-00007	A2

This drawing should not be relied on or used in circumstances other than those for which it was originally prepared and for which the Mott MacDonald Sweco (MMS) Joint Venture was commissioned. MMS accepts no responsibility for this drawing to any party other than the person by whom it was commissioned. Any party which breaches the provisions of this disclaimer shall indemnify MMS for all loss or damage arising therefrom.



Legend

- Route option
- 500m Buffer
- Borehole - The Moray Council
- Borehole - British Geological Survey

Artificial Deposits - Superficial

- Infilled Ground - Made Ground (Composition Unspecified), IG
- Landscaped Ground (Undivided) - Unknown Lithology, LGU
- Made Ground (Undivided) - Made Ground (Composition Unspecified), MGU
- Worked Ground (Undivided) - Void, WGU

Superficial Geology

- ALF-XVSZC, Alluvial Fan Deposits
- ALRT-XVSZC, Alluvium and River Terrace Deposits (Undifferentiated)
- ALV-XCZSV, Alluvium
- ARDS-XSZ, Ardersier Silts Formation
- BROCK, Bedrock at or near surface
- FINT-DMTN, Flinglack Till Formation
- GFDD-XVSZ, Glaciofluvial Deltaic Deposits
- GFDU-XVSZ, Glaciofluvial Deposits
- GFIC-XSV, Glaciofluvial Ice Contact Deposits
- GFIC-XVSZ, Glaciofluvial Ice Contact Deposits
- GFSD-XSV, Glaciofluvial Sheet Deposits
- GFSD-XVSZ, Glaciofluvial Sheet Deposits
- GFSU-V, Glaciofluvial Sub-Glacial Deposits
- GFSD-XSV, Glaciofluvial Terrace Deposits
- GLLD-XCZS, Glaciolacustrine Deposits
- GRHS-XSZC, Grange Hill Sand Formation
- HMGD-XDSV, Hummocky (Moundy) Glacial Deposits
- LDE-XCZS, Lacustrine
- LDE-XCZS, Lacustrine Deposits
- PEAT-P, Peat
- RMBDD-XVSZ, Raised Marine Beach Deposits
- RMD, Raised Marine Deposits
- RMDf1-XSV, Raised Marine Deposits
- RMDf2-XSV, Raised Marine Deposits
- RTDU-XVSZ, River Terrace Deposits (Undifferentiated)
- SUPNM-WATR, Superficial Theme Not Recorded
- TILLD-DMTN, Till Devensian

0 500 1000 Metres

CD1	27/11/2018	Approved as Stage Complete	JB	SR
Rev.	Rev. Date	Drawing Suitability	Drawn	Apprd

Mott MacDonald Sweco

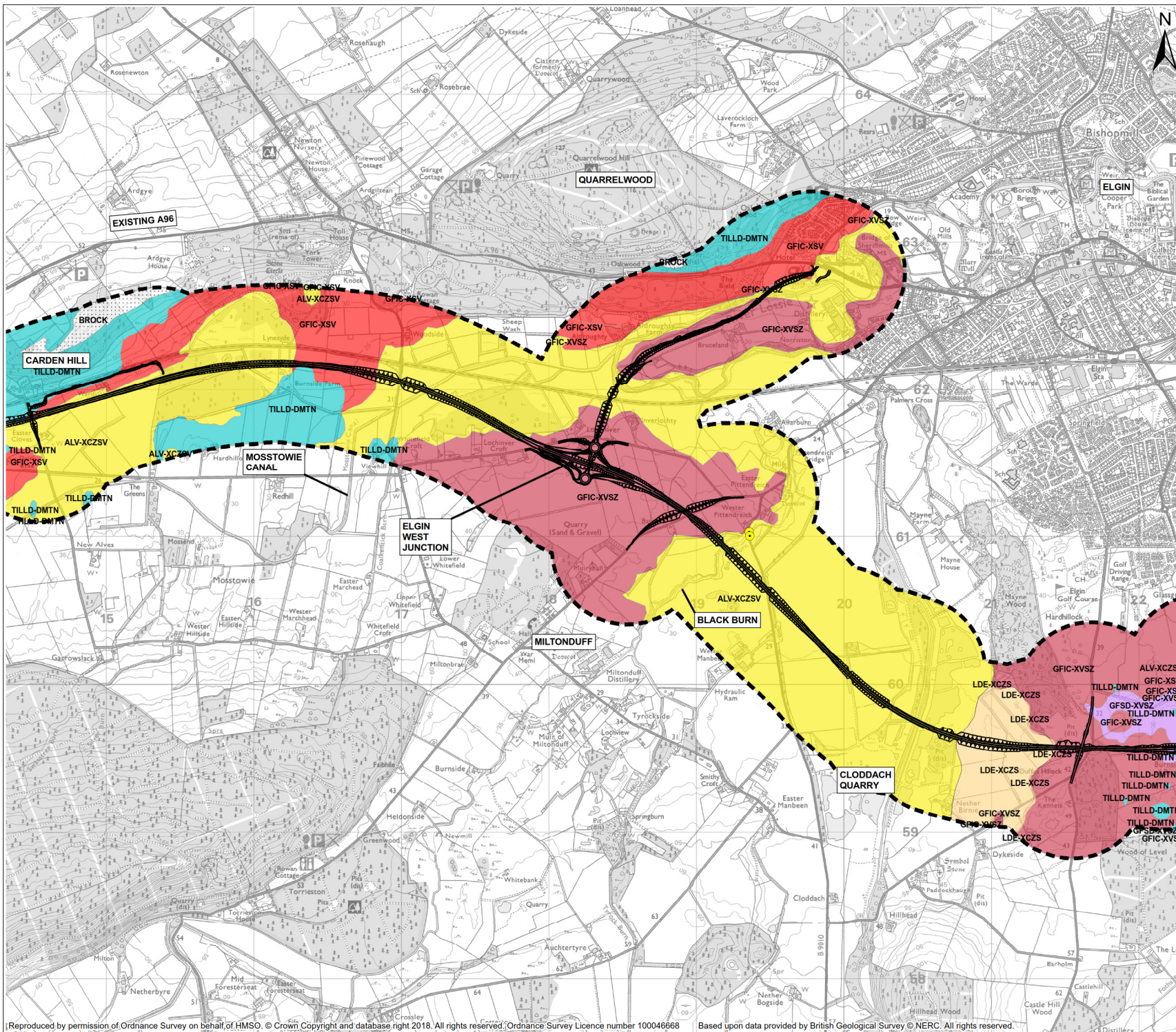


Client
Project
**A96 DUALLING
HARDMUIR TO FOCHABERS**

Drawing Title
**FIGURE 6.12 HILLHEAD TO LHANBRYDE
SOUTH OPTION SUPERFICIAL GEOLOGY
SHEET 1 OF 3**

Scale @ A3 1:25 000 **DO NOT SCALE**
Project No. 117880 Status A2
BIM No. A96PHF-MMS-EGT-00000-DR-GE-00008

This drawing should not be relied on or used in circumstances other than those for which it was originally prepared and for which the Mott MacDonald Sweco (MMS) Joint Venture was commissioned. MMS accepts no responsibility for this drawing to any party other than the person by whom it was commissioned. Any party which breaches the provisions of this disclaimer shall indemnify MMS for all loss or damage arising therefrom.



Legend

- Route option
- 500m Buffer
- Borehole - The Moray Council
- Borehole - British Geological Survey

Artificial Deposits - Superficial

- Infilled Ground - Made Ground (Composition Unspecified), IG
- Landscaped Ground (Undivided) - Unknown Lithology, LGU
- Made Ground (Undivided) - Made Ground (Composition Unspecified), MGU
- Worked Ground (Undivided) - Void, WGU

Superficial Geology

- ALF-XVXSZ, Alluvial Fan Deposits
- ALRT-XVXSZ, Alluvium and River Terrace Deposits (Undifferentiated)
- ALV-XCZSV, Alluvium
- ARDS-XSZ, Ardersier Silts Formation
- BROCK, Bedrock at or near surface
- FINT-DMTN, Flinglack Till Formation
- GFDD-XVXSZ, Glaciofluvial Deltaic Deposits
- GFDU-XVSZ, Glaciofluvial Deposits
- GFIC-XSV, Glaciofluvial Ice Contact Deposits
- GFIC-XVSZ, Glaciofluvial Ice Contact Deposits
- GFSD-XSV, Glaciofluvial Sheet Deposits
- GFSD-XVSZ, Glaciofluvial Sheet Deposits
- GFUSU-V, Glaciofluvial Sub-Glacial Deposits
- GFTD-XSV, Glaciofluvial Terrace Deposits
- GLLD-XCZS, Glaciolacustrine Deposits
- GRHS-XSZC, Grange Hill Sand Formation
- HMGD-XDSV, Hummocky (Moundy) Glacial Deposits
- LDE-XCZS, Lacustrine
- LDE-XCZS, Lacustrine Deposits
- PEAT-P, Peat
- RMBDD-XVXSZ, Raised Marine Beach Deposits
- RMD, Raised Marine Deposits
- RMDF1-XSV, Raised Marine Deposits
- RMDF2-XSV, Raised Marine Deposits
- RTDU-XVXSZ, River Terrace Deposits (Undifferentiated)
- SUPNM-WATR, Superficial Theme Not Recorded
- TILLD-DMTN, Till Devensian

0 500 1000 Metres

CD1	27/11/2018	Approved as Stage Complete	JB	SR
Rev.	Rev. Date	Drawing Suitability	Drawn	Apprd

Mott MacDonald Sweco

Client

Project

**A96 DUALLING
HARDMUIR TO FOCHABERS**

Drawing Title

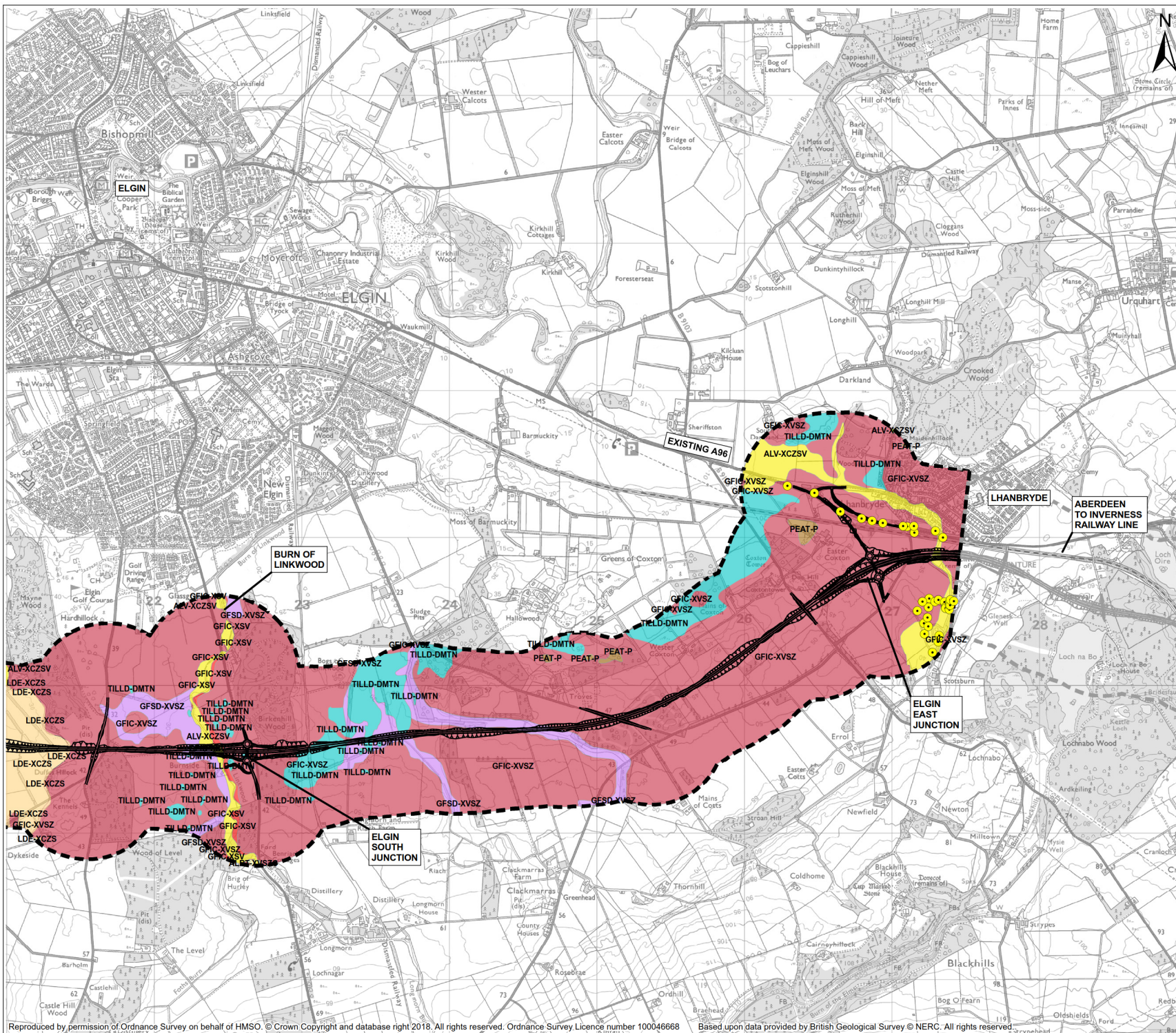
**FIGURE 6.13 HILLHEAD TO LHANBRYDE
SOUTH OPTION SUPERFICIAL GEOLOGY
SHEET 2 OF 3**

Scale @ A3 1:25 000 **DO NOT SCALE**

Project No. 117780 Status A2

BIM No. A96PHF-MMS-EGT-00000-DR-GE-00009

This drawing should not be relied on or used in circumstances other than those for which it was originally prepared and for which the Mott MacDonald Sweco (MMS) Joint Venture was commissioned. MMS accepts no responsibility for this drawing to any party other than the person by whom it was commissioned. Any party which breaches the provisions of this disclaimer shall indemnify MMS for all loss or damage arising therefrom.



Legend

- Route option
- 500m Buffer
- Borehole - The Moray Council
- Borehole - British Geological Survey
- Artificial Deposits - Superficial
 - Infilled Ground - Made Ground (Composition Unspecified), IG
 - Landscaped Ground (Undivided) - Unknown Lithology, LGU
 - Made Ground (Undivided) - Made Ground (Composition Unspecified), MGU
 - Worked Ground (Undivided) - Void, WGU
- Superficial Geology
 - ALF-XVSZC, Alluvial Fan Deposits
 - ALRT-XVSZC, Alluvium and River Terrace Deposits (Undifferentiated)
 - ALV-XCZSV, Alluvium
 - ARDS-XSZ, Ardersier Silts Formation
 - BROCK, Bedrock at or near surface
 - FINT-DMTN, Flinglack Till Formation
 - GFDD-XVSZ, Glaciofluvial Deltaic Deposits
 - GFDU-XVSZ, Glaciofluvial Deposits
 - GFIC-XSV, Glaciofluvial Ice Contact Deposits
 - GFIC-XVSZ, Glaciofluvial Ice Contact Deposits
 - GFSD-XSV, Glaciofluvial Sheet Deposits
 - GFSD-XVSZ, Glaciofluvial Sheet Deposits
 - GFSTU-V, Glaciofluvial Sub-Glacial Deposits
 - GFSTU-XSV, Glaciofluvial Terrace Deposits
 - GLLD-XCZS, Glaciolacustrine Deposits
 - GRHS-XSZC, Grange Hill Sand Formation
 - HMGD-XDSV, Hummocky (Moundy) Glacial Deposits
 - LDE-XCZS, Lacustrine
 - LDE-XCZS, Lacustrine Deposits
 - PEAT-P, Peat
 - RMBDD-XVSZ, Raised Marine Beach Deposits
 - RMD, Raised Marine Deposits
 - RMD1-XSV, Raised Marine Deposits
 - RMD2-XSV, Raised Marine Deposits
 - RTDU-XVSZ, River Terrace Deposits (Undifferentiated)
 - SUPNM-WATR, Superficial Theme Not Recorded
 - TILLD-DMTN, Till Devensian

0 500 1000 Metres

C01	27/11/2018	Approved as Stage Complete	JB	SR
Rev.	Rev. Date	Drawing Suitability	Drawn	Apprd

Mott MacDonald Sweco

Client

Project

**A96 DUALLING
HARDMUIR TO FOCHABERS**

Drawing Title

**FIGURE 6.14 HILLHEAD TO LHANBRYDE
SOUTH OPTION SUPERFICIAL GEOLOGY
SHEET 3 OF 3**

Scale @ A3 1:25 000 **DO NOT SCALE**

Project No. 117880 Status A2

BIM No. A96PHF-MMS-EGT-0000-DR-GE-00010

This drawing should not be relied on or used in circumstances other than those for which it was originally prepared and for which the Mott MacDonald Sweco (MMS) Joint Venture was commissioned. MMS accepts no responsibility for this drawing to any party other than the person by whom it was commissioned. Any party which breaches the provisions of this disclaimer shall indemnify MMS for all loss or damage arising therefrom.