

**Legend**

- Route option
- LA10 18 Hr change [dB]
- Decrease >10 dB
- Decrease 5 to 10 dB
- Decrease 3 to 5 dB
- Decrease 1 to 3 dB
- Decrease/Increase <=1 dB
- Increase 1 to 3 dB
- Increase 3 to 5 dB
- Increase 5 to 10 dB
- Increase >10 dB

0 750 1,500 3,000 Metres

Contains OS data © Crown Copyright and database right 2018

C01	27/11/2018	Approved as Stage Complete	JB	AMS
Rev.	Rev. Date	Drawing Suitability	Drawn	Appr'd

**Mott MacDonald Sweco**

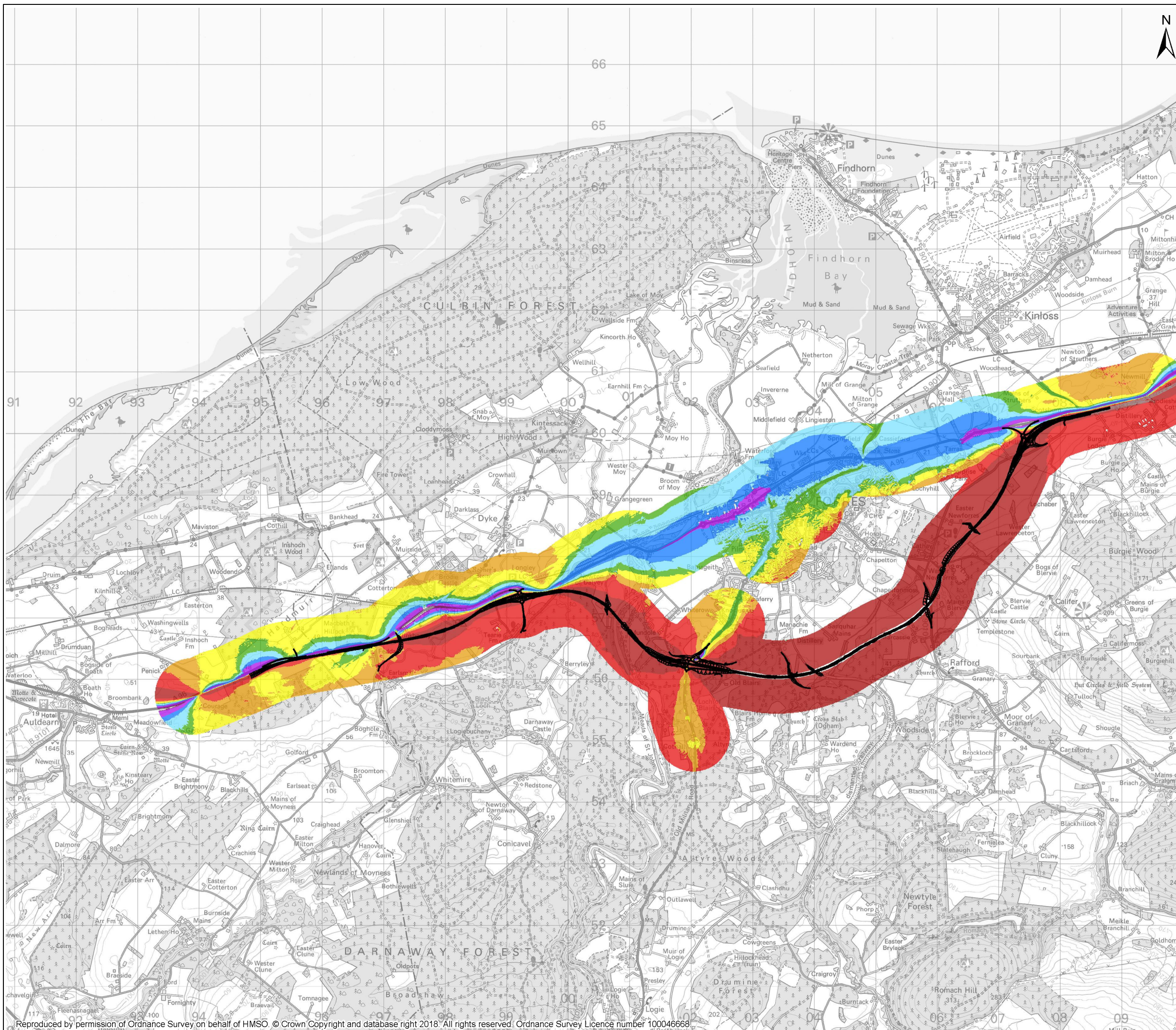


Project  
**A96 Dualling  
Hardmuir to Fochabers**

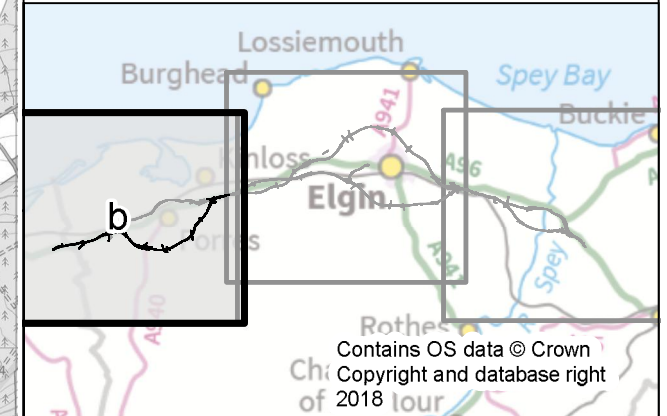
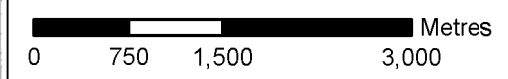
Drawing Title  
**Figure 11.4a Opening Year Noise Change Contours  
Hardmuir to Hillhead - North Option**

Scale @ A3	1:60,000	DO NOT SCALE
Project No.	117880	Status A2
BIM No.	A96PHF-MMS-EGN-00000-DR-GS-00058	

This drawing should not be relied on or used in circumstances other than those for which it was originally prepared and for which the Mott MacDonald Sweco (MMS) Joint Venture was commissioned. MMS accepts no responsibility for this drawing to any party other than the person by whom it was commissioned. Any party which breaches the provisions of this disclaimer shall indemnify MMS for all loss or damage arising therefrom.



- Legend**
- Route option
  - LA10 18 Hr change [dB]
  - Decrease >10 dB
  - Decrease 5 to 10 dB
  - Decrease 3 to 5 dB
  - Decrease 1 to 3 dB
  - Decrease/Increase <=1 dB
  - Increase 1 to 3 dB
  - Increase 3 to 5 dB
  - Increase 5 to 10 dB
  - Increase >10 dB



C01	27/11/2018	Approved as Stage Complete	JB	AMS
Rev.	Rev. Date	Drawing Suitability	Drawn	Appr'd

**Mott MacDonald Sweco**



Project  
**A96 Dualling  
Hardmuir to Fochabers**

Drawing Title  
**Figure 11.4b Opening Year Noise Change Contours  
Hardmuir to Hillhead - South Option**

Scale @ A3	1:60,000	DO NOT SCALE
Project No.	117880	Status
BIM No.	A96PHF-MMS-EGN-0000-DR-GS-00058	

This drawing should not be relied on or used in circumstances other than those for which it was originally prepared and for which the Mott MacDonald Sweco (MMS) Joint Venture was commissioned. MMS accepts no responsibility for this drawing to any party other than the person by whom it was commissioned. Any party which breaches the provisions of this disclaimer shall indemnify MMS for all loss or damage arising therefrom.