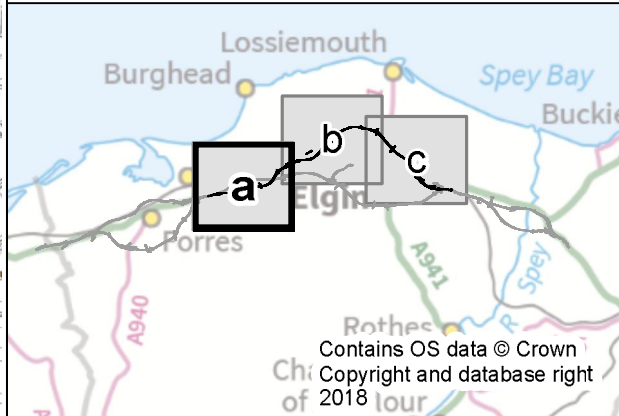


- Legend**
- Route option
 - 500m Buffer
 - Watercourse
 - Community Land
 - Community Facility
 - Structures to be Demolished
 - Open Space
 - Woodland used by the Community
- Non Motorised User (NMU) Routes***
- Scotland's Great Trail
 - Core Path
 - Public Right of Way
 - Aspirational Core Path
 - National Cycle Network Route 1
 - Existing Local Route
 - Moray Cycle Route
 - Forestry Commission Recreational Route

* Note: Users of those routes which are labelled are predicted to experience significant adverse / beneficial effects

0 250 500 1,000 1,500 Metres



C01	27/11/2018	Approved as Stage Complete	JB	MR
Rev.	Rev. Date	Drawing Suitability	Drawn	Appr'd

Mott MacDonald Sweco

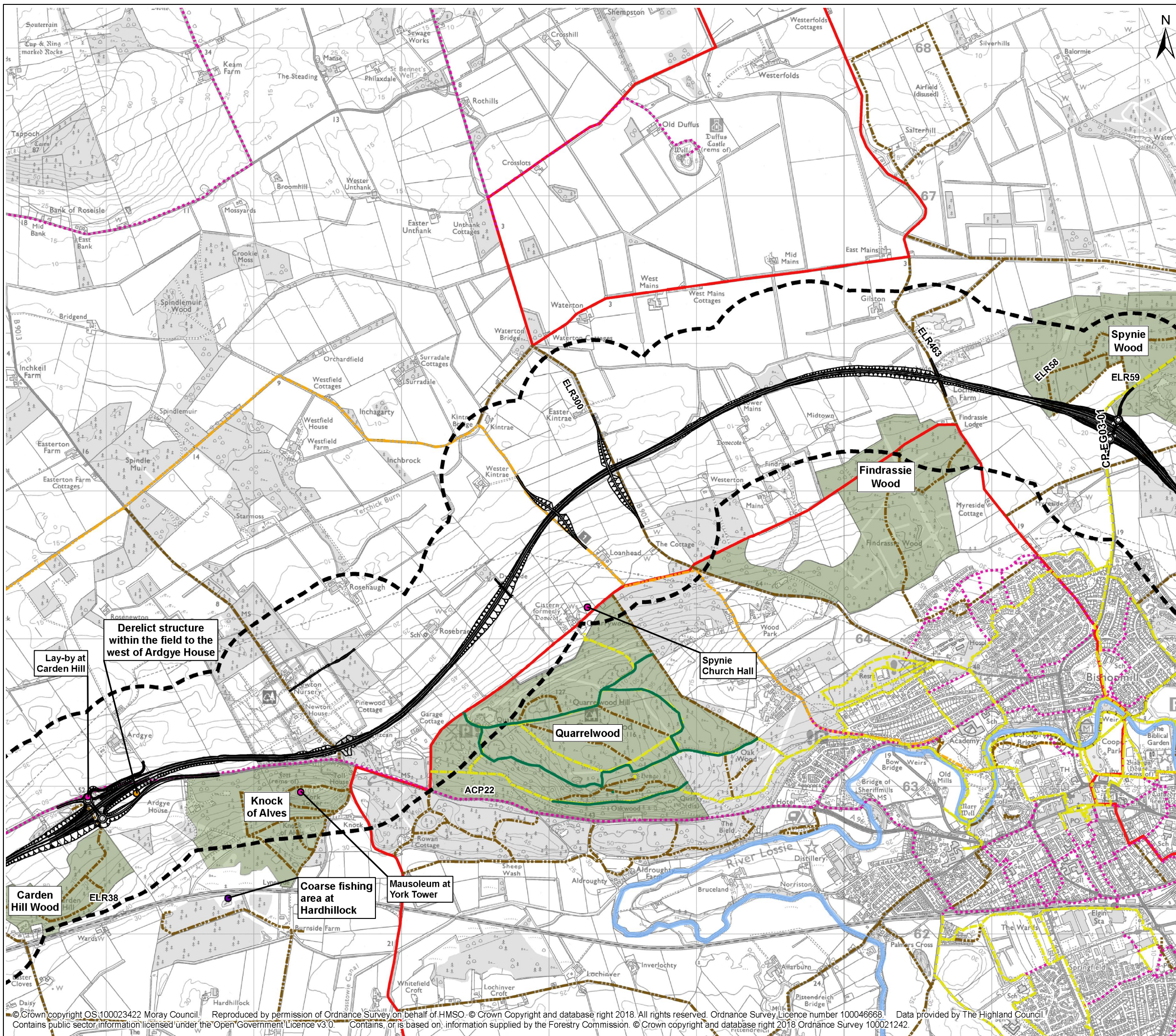


Project: **A96 Dualling Hardmuir to Fochabers**

Drawing Title: **Figure 12.2a People and Communities Assessment Hillhead to Lhanbryde - North Option**

Scale @ A3	1:25,000	DO NOT SCALE
Project No.	117880	Status
BIM No.	A96PHF-MMS-EGN-00000-DR-GS-00019	

This drawing should not be relied on or used in circumstances other than those for which it was originally prepared and for which the Mott MacDonald Sweco (MMS) Joint Venture was commissioned. MMS accepts no responsibility for this drawing to any party other than the person by whom it was commissioned. Any party which breaches the provisions of this disclaimer shall indemnify MMS for all loss or damage arising therefrom.



Legend

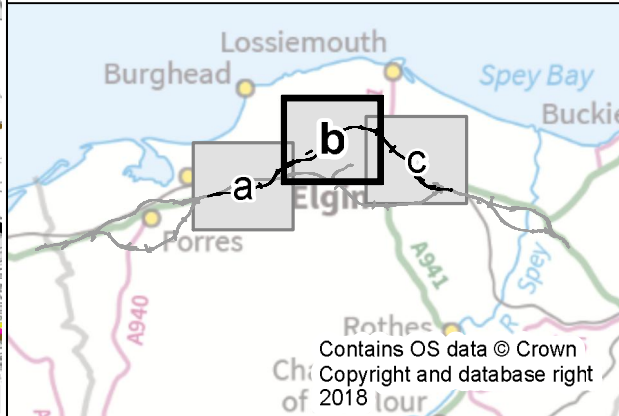
- Route option
- 500m Buffer
- Watercourse
- Community Land
- Community Facility
- Structures to be Demolished
- Open Space
- Woodland used by the Community

Non Motorised User (NMU) Routes*

- Scotland's Great Trail
- Core Path
- Public Right of Way
- Aspirational Core Path
- National Cycle Network Route 1
- Existing Local Route
- Moray Cycle Route
- Forestry Commission Recreational Route

* Note: Users of those routes which are labelled are predicted to experience significant adverse / beneficial effects

0 250 500 1,000 1,500 Metres



CO1	27/11/2018	Approved as Stage Complete	JB	MR
Rev.	Rev. Date	Drawing Suitability	Drawn	Appr'd

Mott MacDonald Sweco

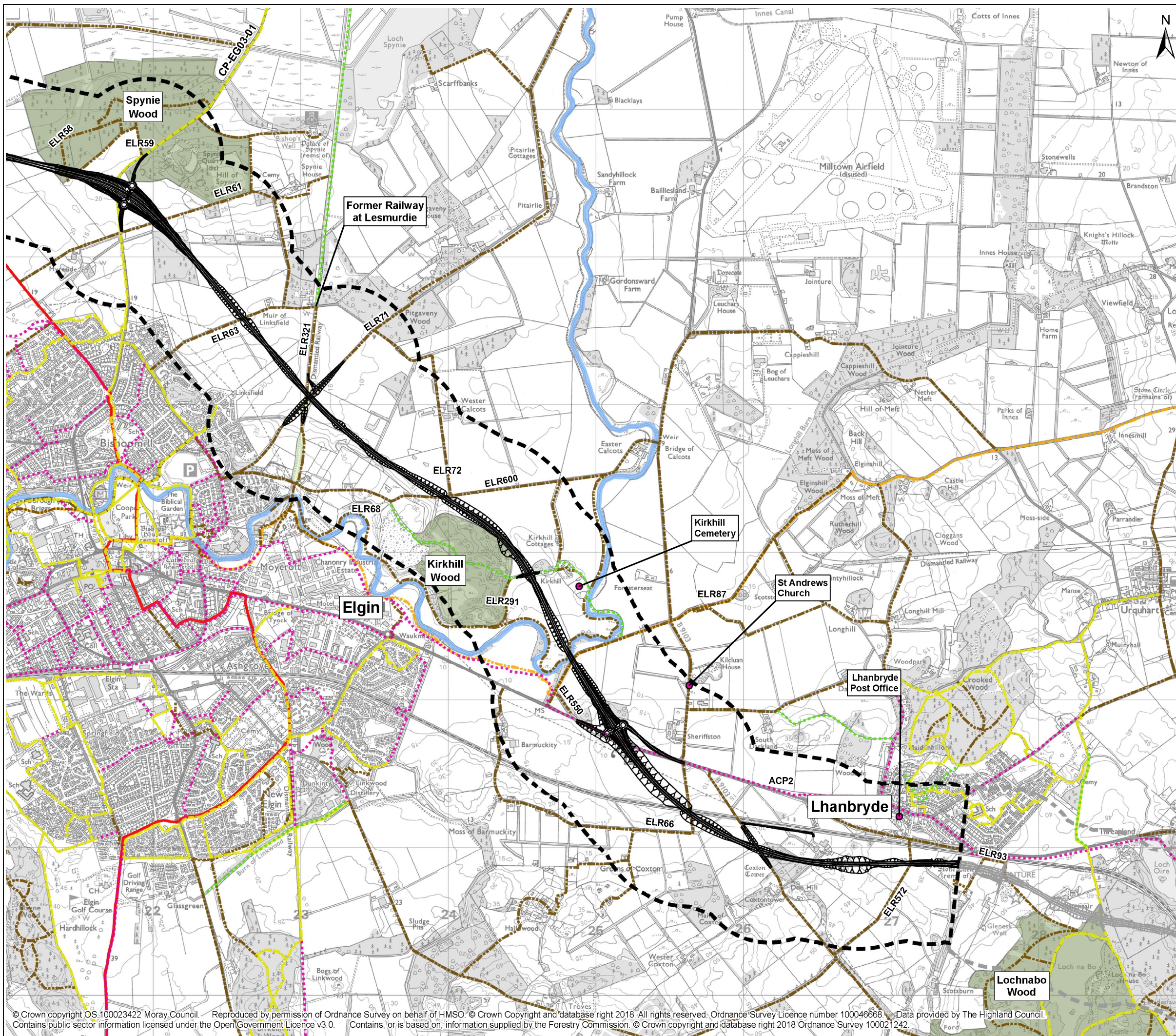


**A96 Dualling
Hardmuir to Fochabers**

Drawing Title
Figure 12.2b People and Communities Assessment
Hillhead to Lhanbryde - North Option

Scale @ A3	1:25,000	DO NOT SCALE
Project No.	117880	Status A2
BIM No.	A96PHF-MMS-EGN-00000-DR-GS-00019	

This drawing should not be relied on or used in circumstances other than those for which it was originally prepared and for which the Mott MacDonald Sweco (MMS) Joint Venture was commissioned. MMS accepts no responsibility for this drawing to any party other than the person by whom it was commissioned. Any party which breaches the provisions of this disclaimer shall indemnify MMS for all loss or damage arising therefrom.



Legend

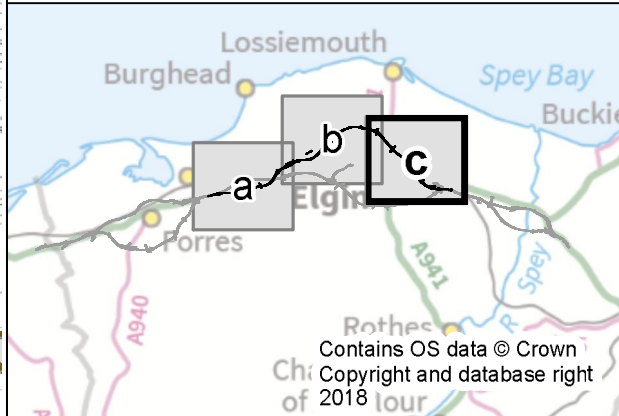
- Route option
- 500m Buffer
- Watercourse
- Community Land
- Community Facility
- Structures to be Demolished
- Open Space
- Woodland used by the Community

Non Motorised User (NMU) Routes*

- Scotland's Great Trail
- Core Path
- Public Right of Way
- Aspirational Core Path
- National Cycle Network Route 1
- Existing Local Route
- Moray Cycle Route
- Forestry Commission Recreational Route

* Note: Users of those routes which are labelled are predicted to experience significant adverse / beneficial effects

0 250 500 1,000 1,500 Metres



C01	27/11/2018	Approved as Stage Complete	JB	MR
Rev.	Rev. Date	Drawing Suitability	Drawn	Appr'd

Mott MacDonald Sweco

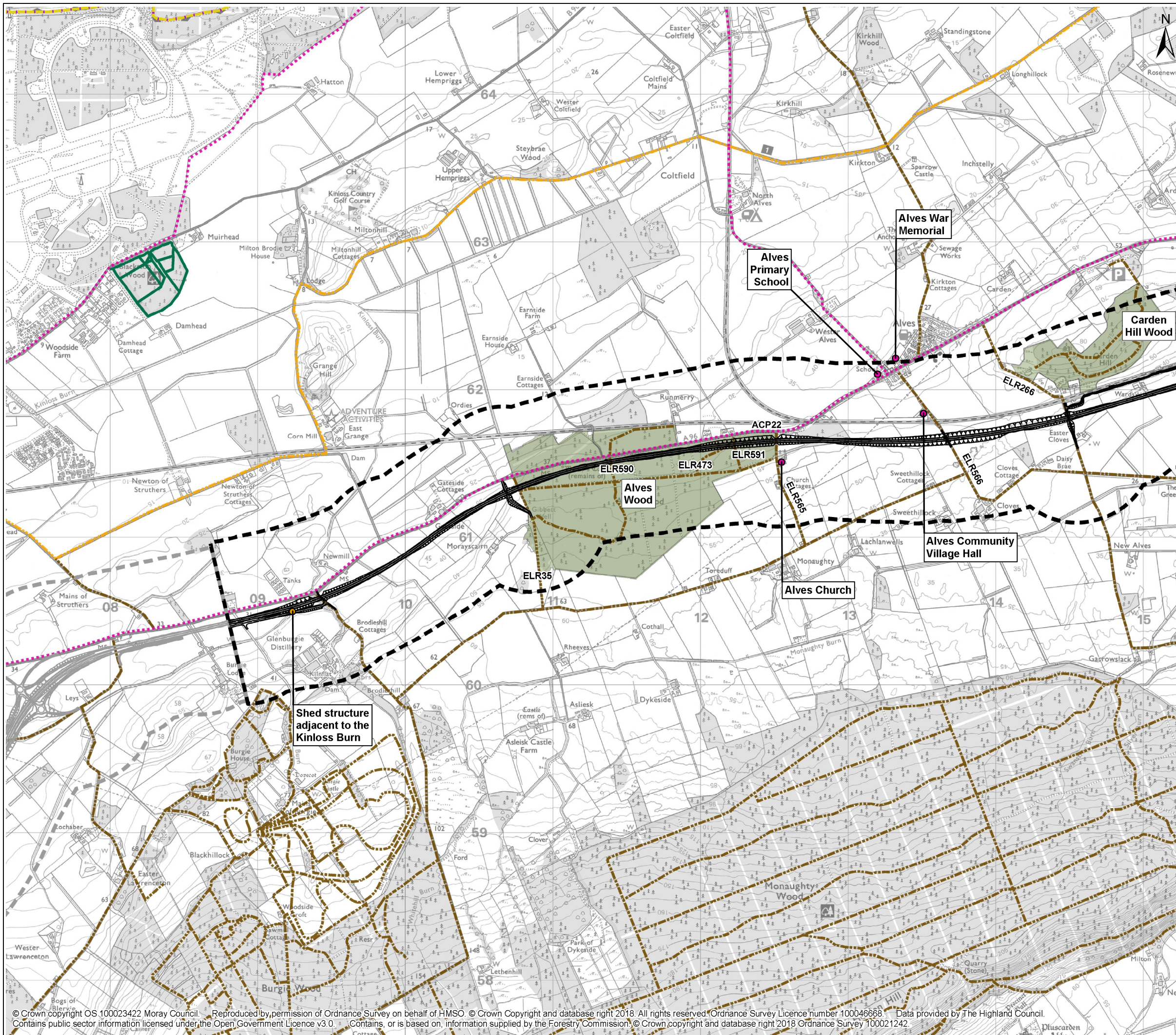


Project: **A96 Dualling Hardmuir to Fochabers**

Drawing Title: **Figure 12.2c People and Communities Assessment Hillhead to Lhanbryde - North Option**

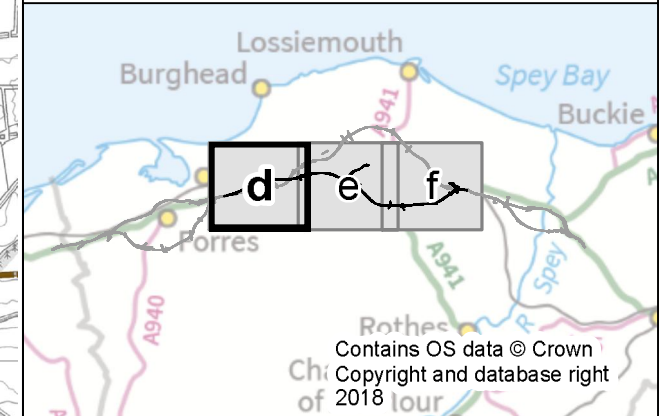
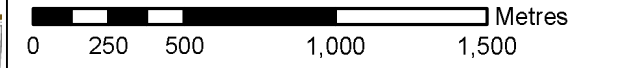
Scale @ A3	1:25,000	DO NOT SCALE
Project No.	117880	Status
BIM No.	A96PHF-MMS-EGN-00000-DR-GS-00019	

This drawing should not be relied on or used in circumstances other than those for which it was originally prepared and for which the Mott MacDonald Sweco (MMS) Joint Venture was commissioned. MMS accepts no responsibility for this drawing to any party other than the person by whom it was commissioned. Any party which breaches the provisions of this disclaimer shall indemnify MMS for all loss or damage arising therefrom.



- Legend**
- Route option
 - 500m Buffer
 - Watercourse
 - Community Land
 - Community Facility
 - Structures to be Demolished
 - Open Space
 - Woodland used by the Community
- Non Motorised User (NMU) Routes*
- Scotland's Great Trail
 - Core Path
 - Public Right of Way
 - Aspirational Core Path
 - National Cycle Network Route 1
 - Existing Local Route
 - Moray Cycle Route
 - Forestry Commission Recreational Route

* Note: Users of those routes which are labelled are predicted to experience significant adverse / beneficial effects



CO1	27/11/2018	Approved as Stage Complete	JB	MR
Rev.	Rev. Date	Drawing Suitability	Drawn	Appr'd

Mott MacDonald Sweco

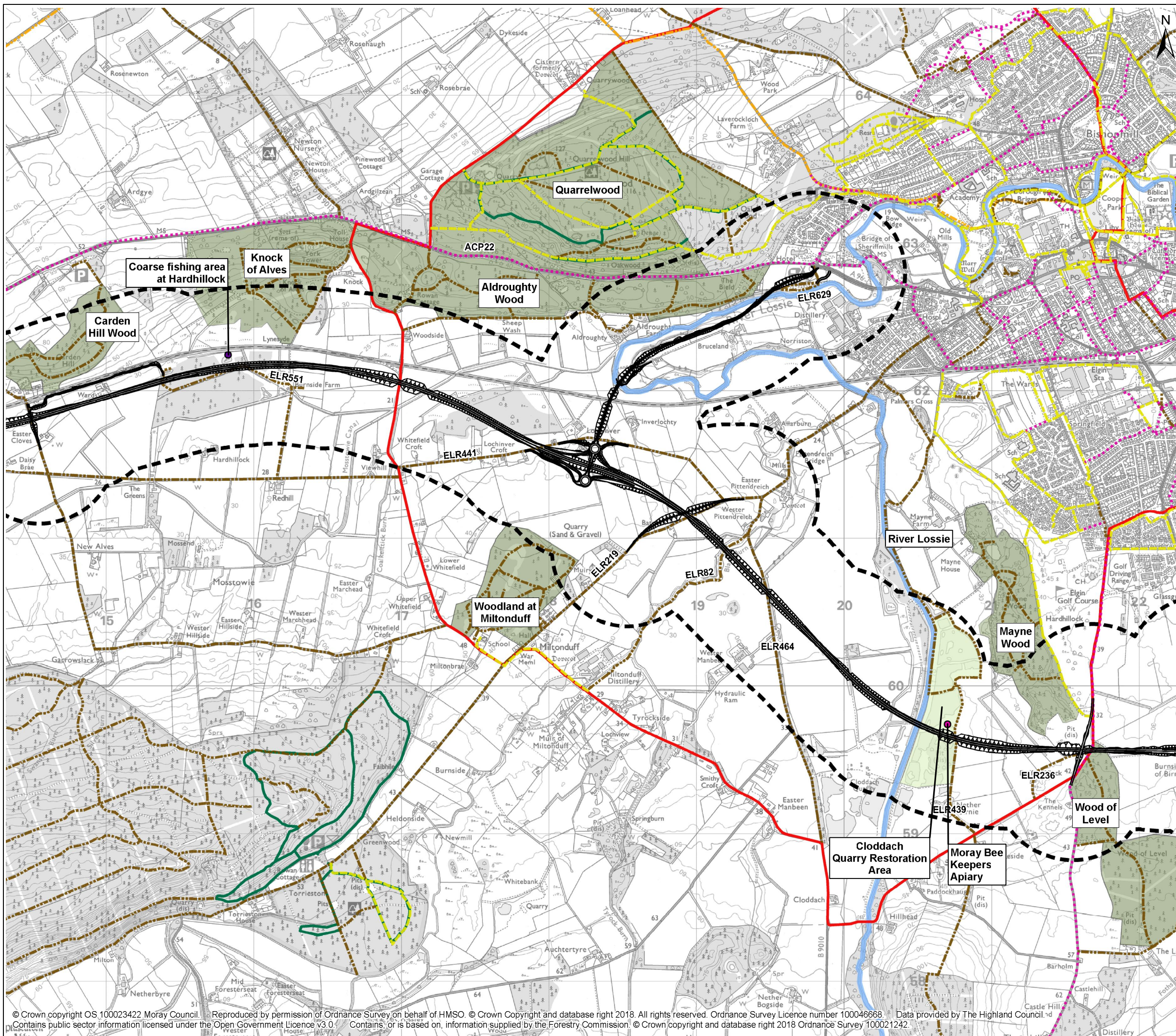


Project: **A96 Dualling Hardmuir to Fochabers**

Drawing Title: **Figure 12.2d People and Communities Assessment Hillhead to Lhanbryde - South Option**

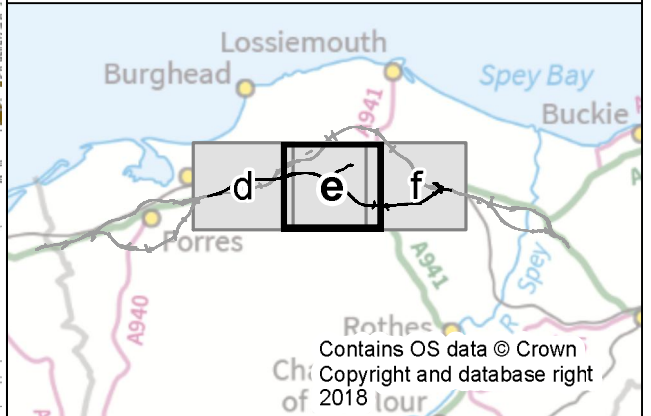
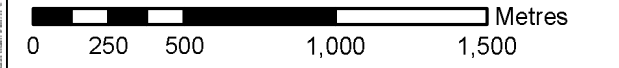
Scale @ A3	1:25,000	DO NOT SCALE
Project No.	117880	Status A2
BIM No.	A96PHF-MMS-EGN-00000-DR-GS-00019	

This drawing should not be relied on or used in circumstances other than those for which it was originally prepared and for which the Mott MacDonald Sweco (MMS) Joint Venture was commissioned. MMS accepts no responsibility for this drawing to any party other than the person by whom it was commissioned. Any party which breaches the provisions of this disclaimer shall indemnify MMS for all loss or damage arising therefrom.



- Legend**
- Route option
 - 500m Buffer
 - Watercourse
 - Community Land
 - Community Facility
 - Structures to be Demolished
 - Open Space
 - Woodland used by the Community
- Non Motorised User (NMU) Routes***
- Scotland's Great Trail
 - Core Path
 - Public Right of Way
 - Aspirational Core Path
 - National Cycle Network Route 1
 - Existing Local Route
 - Moray Cycle Route
 - Forestry Commission Recreational Route

* Note: Users of those routes which are labelled are predicted to experience significant adverse / beneficial effects



C01	27/11/2018	Approved as Stage Complete	JB	MR
Rev.	Rev. Date	Drawing Suitability	Drawn	Appr'd

Mott MacDonald Sweco

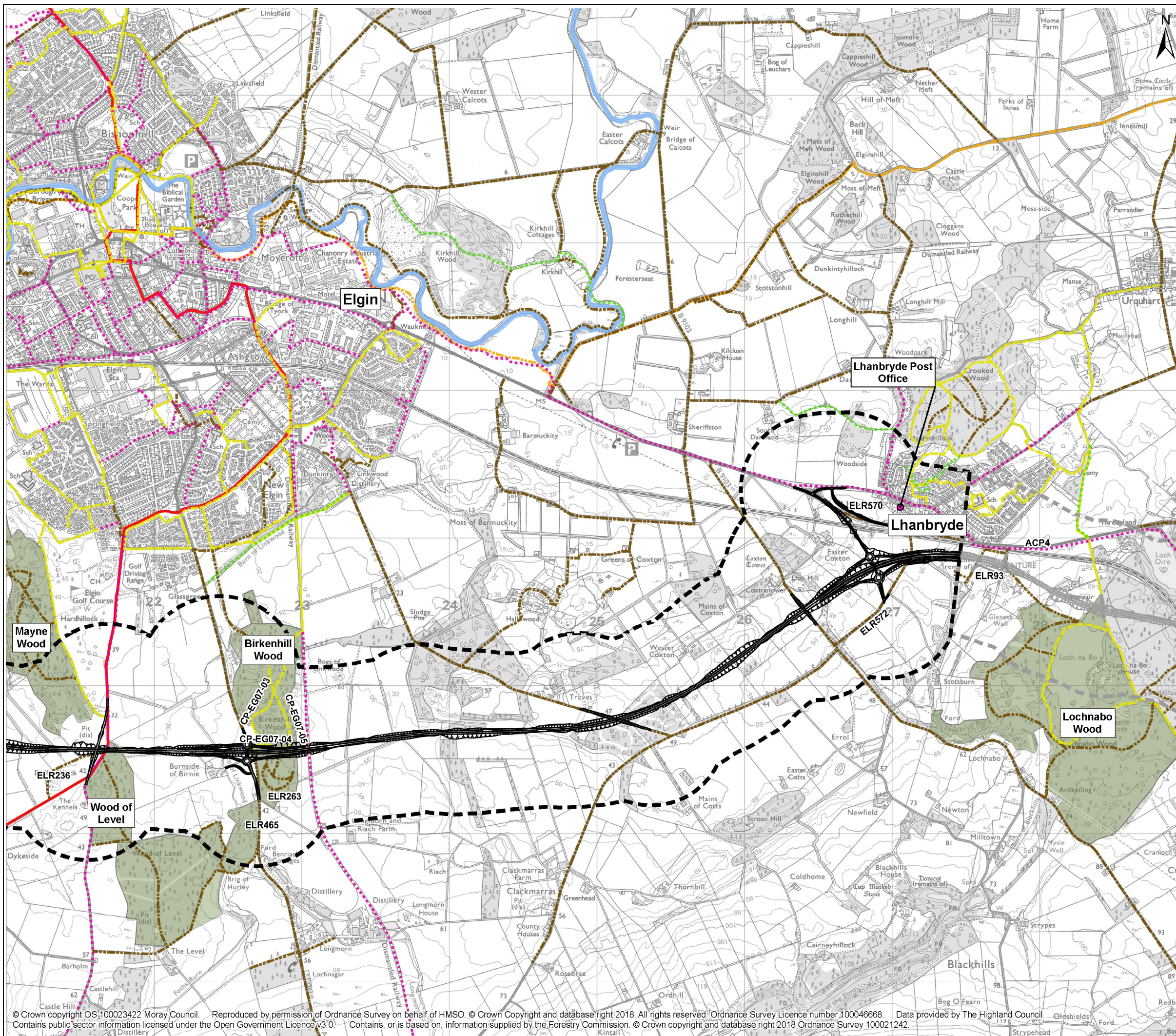


Project: **A96 Dualling Hardmuir to Fochabers**

Drawing Title: **Figure 12.2e People and Communities Assessment Hillhead to Lhanbryde - South Option**

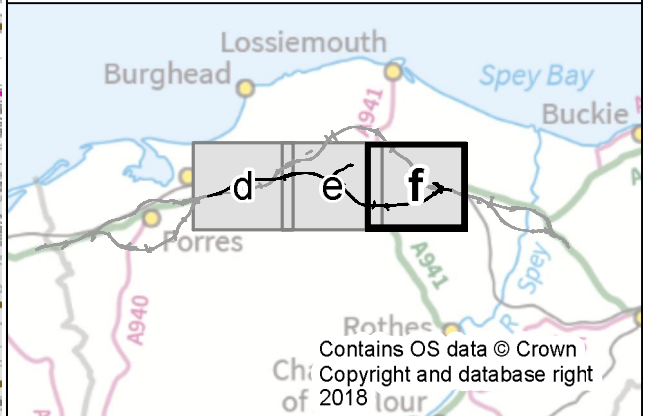
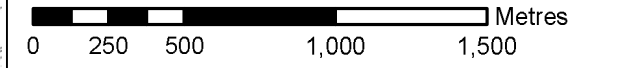
Scale @ A3	1:25,000	DO NOT SCALE
Project No.	117880	Status A2
BIM No.	A96PHF-MMS-EGN-00000-DR-GS-00019	

This drawing should not be relied on or used in circumstances other than those for which it was originally prepared and for which the Mott MacDonald Sweco (MMS) Joint Venture was commissioned. MMS accepts no responsibility for this drawing to any party other than the person by whom it was commissioned. Any party which breaches the provisions of this disclaimer shall indemnify MMS for all loss or damage arising therefrom.



- Legend**
- Route option
 - ▭ 500m Buffer
 - Watercourse
 - Community Land
 - Community Facility
 - Structures to be Demolished
 - Open Space
 - Woodland used by the Community
- Non Motorised User (NMU) Routes*
- Scotland's Great Trail
 - Core Path
 - Public Right of Way
 - Aspirational Core Path
 - National Cycle Network Route 1
 - Existing Local Route
 - Moray Cycle Route
 - Forestry Commission Recreational Route

* Note: Users of those routes which are labelled are predicted to experience significant adverse / beneficial effects



C01	27/11/2018	Approved as Stage Complete	JB	MR
Rev.	Rev. Date	Drawing Suitability	Drawn	Appr'd

Mott MacDonald Sweco



Project: **A96 Dualling Hardmuir to Fochabers**

Drawing Title: **Figure 12.2f People and Communities Assessment Hillhead to Lhanbryde - South Option**

Scale @ A3	1:25,000	DO NOT SCALE
Project No.	117880	Status A2
BIM No.	A96PHF-MMS-EGN-00000-DR-GS-00019	

This drawing should not be relied on or used in circumstances other than those for which it was originally prepared and for which the Mott MacDonald Sweco (MMS) Joint Venture was commissioned. MMS accepts no responsibility for this drawing to any party other than the person by whom it was commissioned. Any party which breaches the provisions of this disclaimer shall indemnify MMS for all loss or damage arising therefrom.