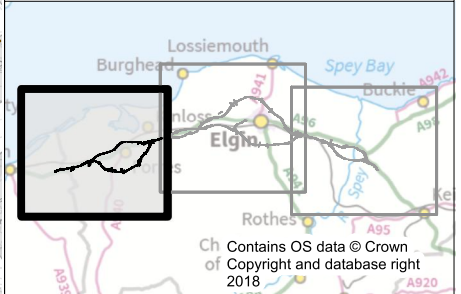
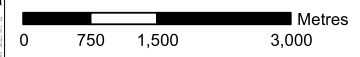


- Legend**
- Route option
 - - - 1km study area for visual assessment
 - ⋯ Focused study area for landscape assessment
 - Scotland's Great Trails (SGT)
 - ▨ Garden and Designed Landscape (GDL)
 - ▨ Area of Great Landscape Value (AGLV)



CD1	27/11/2018	Approved as Stage Complete	JB	JM
Rev.	Rev. Date	Drawing Suitability	Drawn	Appr'd

Mott MacDonald Sweco

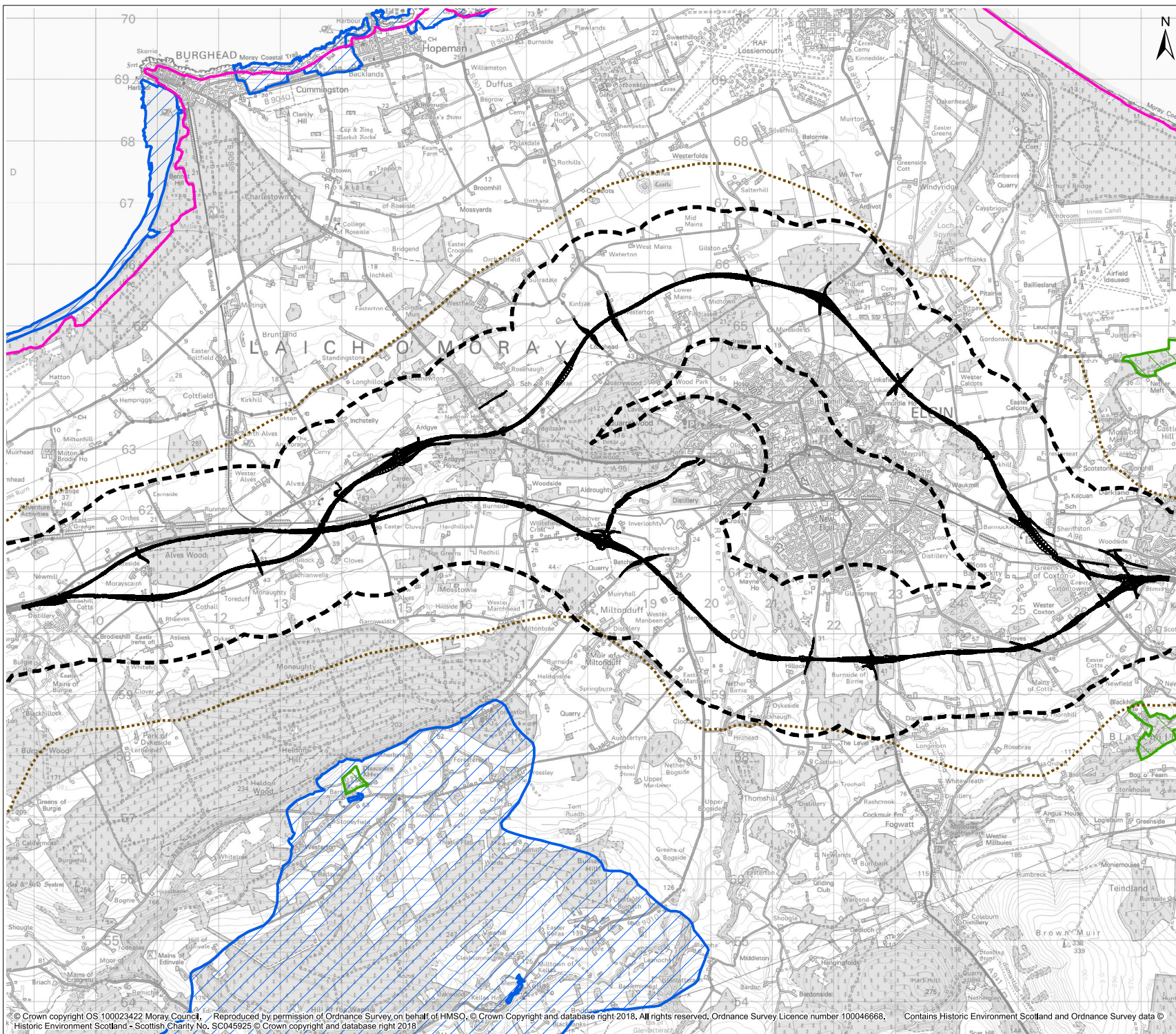


Project
**A96 Dualling
Hardmuir to Fochabers**

Drawing Title
**Figure 17.1 Landscape Designations
Hardmuir to Hillhead**

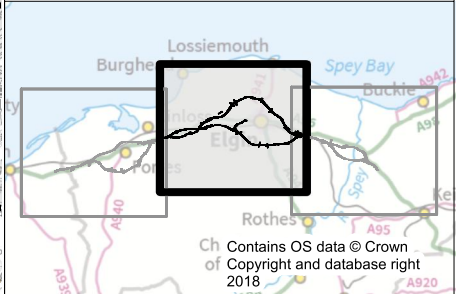
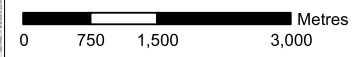
Scale @ A3	1:60,000	DO NOT SCALE
Project No.	117880	Status
BIM No.	A96PHF-MMS-EGN-0000-DR-GS-00033	

This drawing should not be relied on or used in circumstances other than those for which it was originally prepared and for which the Mott MacDonald Sweco (MMS) Joint Venture was commissioned. MMS accepts no responsibility for this drawing to any party other than the person by whom it was commissioned. Any party which breaches the provisions of this disclaimer shall indemnify MMS for all loss or damage arising therefrom.



Legend

- Route option
- 1km study area for visual assessment
- Focused study area for landscape assessment
- Scotland's Great Trails (SGT)
- Garden and Designed Landscape (GDL)
- Area of Great Landscape Value (AGLV)



CD1	27/11/2018	Approved as Stage Complete	JB	JM
Rev.	Rev. Date	Drawing Suitability	Drawn	Appr'd

Mott MacDonald Sweco

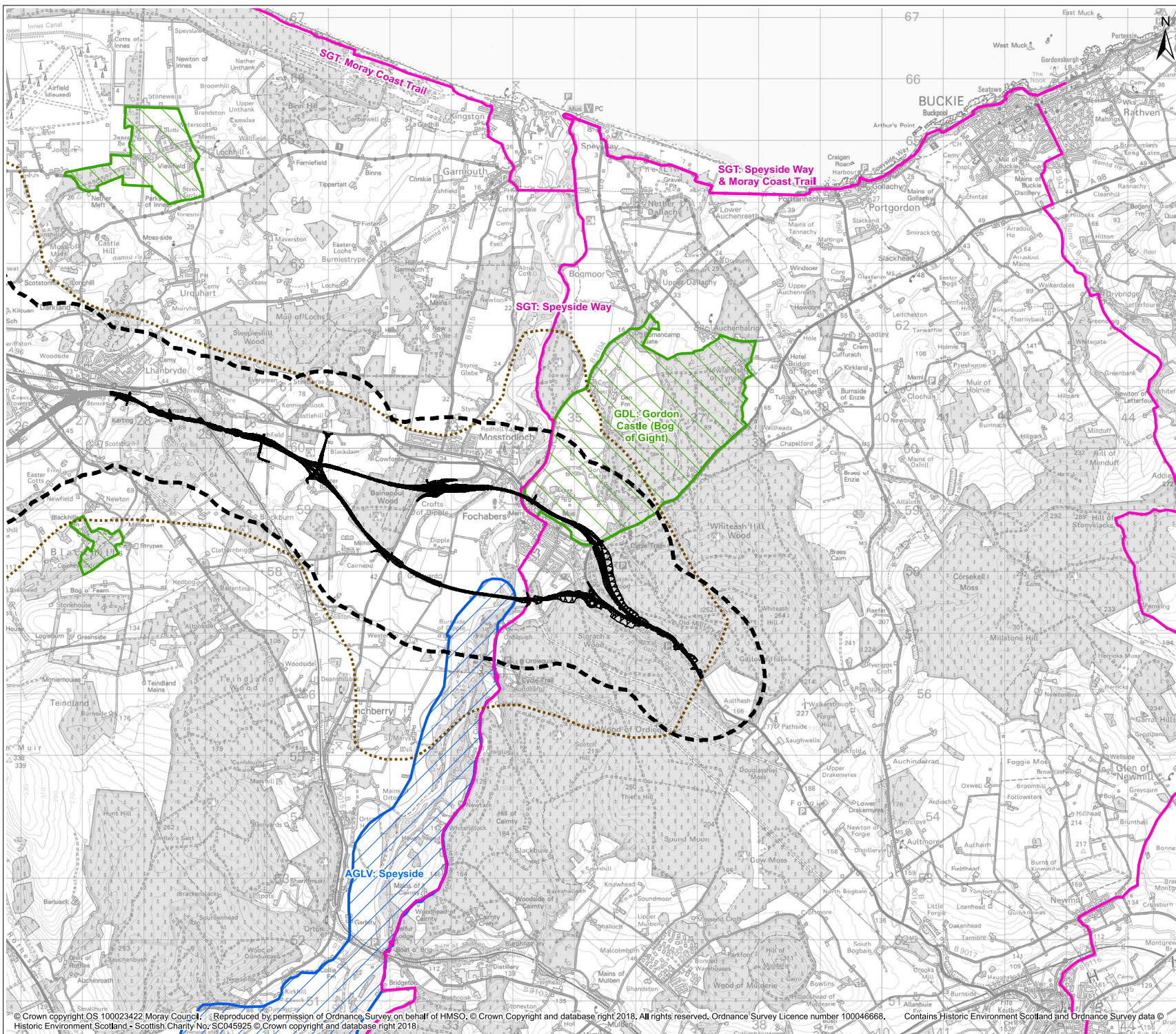


Project
**A96 Dualling
Hardmuir to Fochabers**

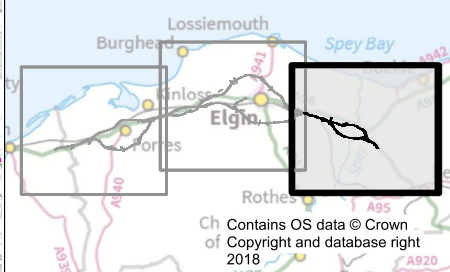
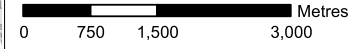
Drawing Title
**Figure 17.2 Landscape Designations
Hillhead to Lhanbryde**

Scale @ A3	1:60,000	DO NOT SCALE
Project No.	117880	Status
BIM No.	A96PHF-MMS-EGN-0000-DR-GS-00034	A2

This drawing should not be relied on or used in circumstances other than those for which it was originally prepared and for which the Mott MacDonald Sweco (MMS) Joint Venture was commissioned. MMS accepts no responsibility for this drawing to any party other than the person by whom it was commissioned. Any party which breaches the provisions of this disclaimer shall indemnify MMS for all loss or damage arising therefrom.



- Legend**
- Route option
 - 1km study area for visual assessment
 - Focused study area for landscape assessment
 - Scotland's Great Trails (SGT)
 - Garden and Designed Landscape (GDL)
 - Area of Great Landscape Value (AGLV)



CD1	27/11/2018	Approved as Stage Complete	JB	JM
Rev.	Rev. Date	Drawing Suitability	Drawn	Appr'd

Mott MacDonald Sweco



Project
**A96 Dualling
Hardmuir to Fochabers**

Drawing Title
**Figure 17.3 Landscape Designations
Lhanbryde to East of Fochabers**

Scale @ A3	1:60,000	DO NOT SCALE
Project No.	117880	Status
BIM No.	A96PHF-MMS-EGN-0000-DR-GS-00035	

This drawing should not be relied on or used in circumstances other than those for which it was originally prepared and for which the Mott MacDonald Sweco (MMS) Joint Venture was commissioned. MMS accepts no responsibility for this drawing to any party other than the person by whom it was commissioned. Any party which breaches the provisions of this disclaimer shall indemnify MMS for all loss or damage arising therefrom.