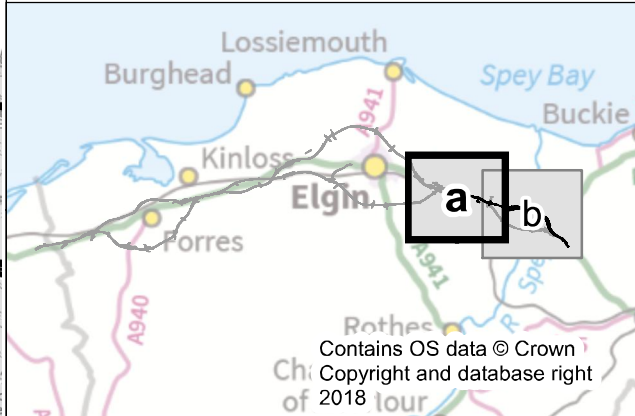


- Legend**
- Route option
 - 500m Buffer
 - Distillery Private Water Supply location
 - Private Water Supply location
 - Well location
 - Approximate extent of Spey Abstraction Scheme Aquifer
 - Approximate extent of peat or mixed peat and peaty soils (Scottish Natural Heritage Carbon and Peat mapping)
 - Geological Conservation Review (GCR) site
 - Site of Special Scientific Interest (SSSI)*

*Note: Dataset only shows geological SSSI records relevant to assessment

0 250 500 1,000 1,500 Metres



C01	27/11/2018	Approved as Stage Complete	JB	KF
Rev.	Rev. Date	Drawing Suitability	Drawn	Appr'd

Mott MacDonald Sweco

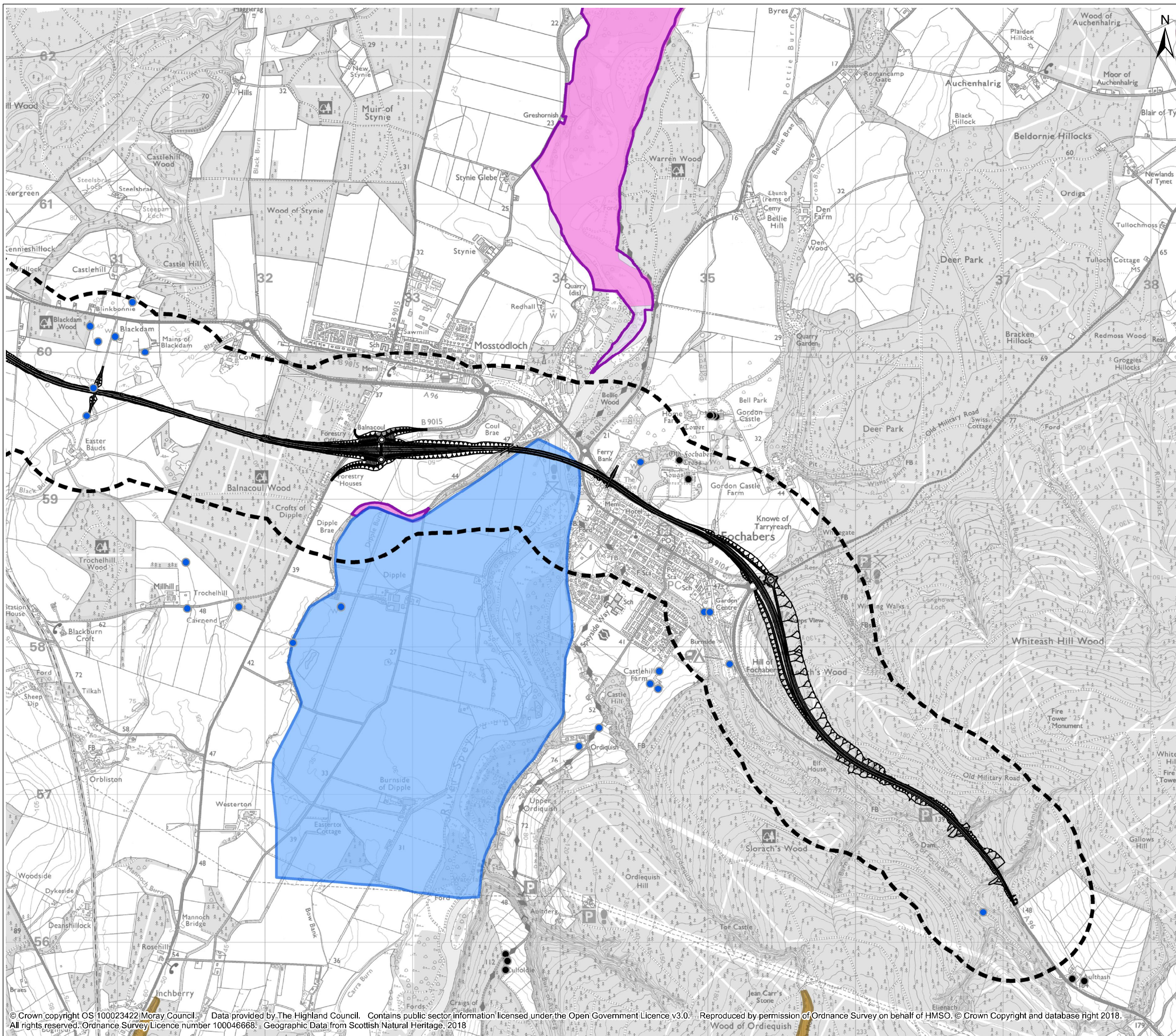


Project **A96 Dualling
Hardmuir to Fochabers**

Drawing Title **Figure 19.3a Geology, Soils, Contaminated Land & Groundwater
Lhanbryde to East of Fochabers - North Option**

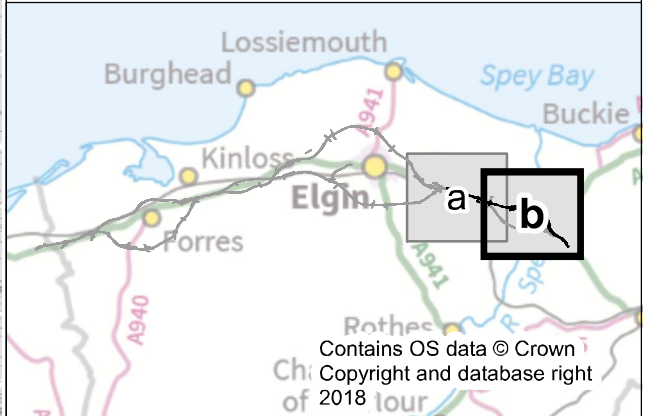
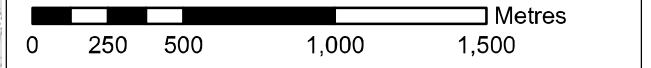
Scale @ A3	1:25,000	DO NOT SCALE
Project No.	117880	Status A2
BIM No.	A96PHF-MMS-EGN-00000-DR-CS-00045	

This drawing should not be relied on or used in circumstances other than those for which it was originally prepared and for which the Mott MacDonald Sweco (MMS) Joint Venture was commissioned. MMS accepts no responsibility for this drawing to any party other than the person by whom it was commissioned. Any party which breaches the provisions of this disclaimer shall indemnify MMS for all loss or damage arising therefrom.



- Legend**
- Route option
 - 500m Buffer
 - Distillery Private Water Supply location
 - Private Water Supply location
 - Well location
 - Approximate extent of Spey Abstraction Scheme Aquifer
 - Approximate extent of peat or mixed peat and peaty soils (Scottish Natural Heritage Carbon and Peat mapping)
 - Geological Conservation Review (GCR) site
 - Site of Special Scientific Interest (SSSI)*

*Note: Dataset only shows geological SSSI records relevant to assessment



C01	27/11/2018	Approved as Stage Complete	JB	KF
Rev.	Rev. Date	Drawing Suitability	Drawn	Appr'd

Mott MacDonald Sweco

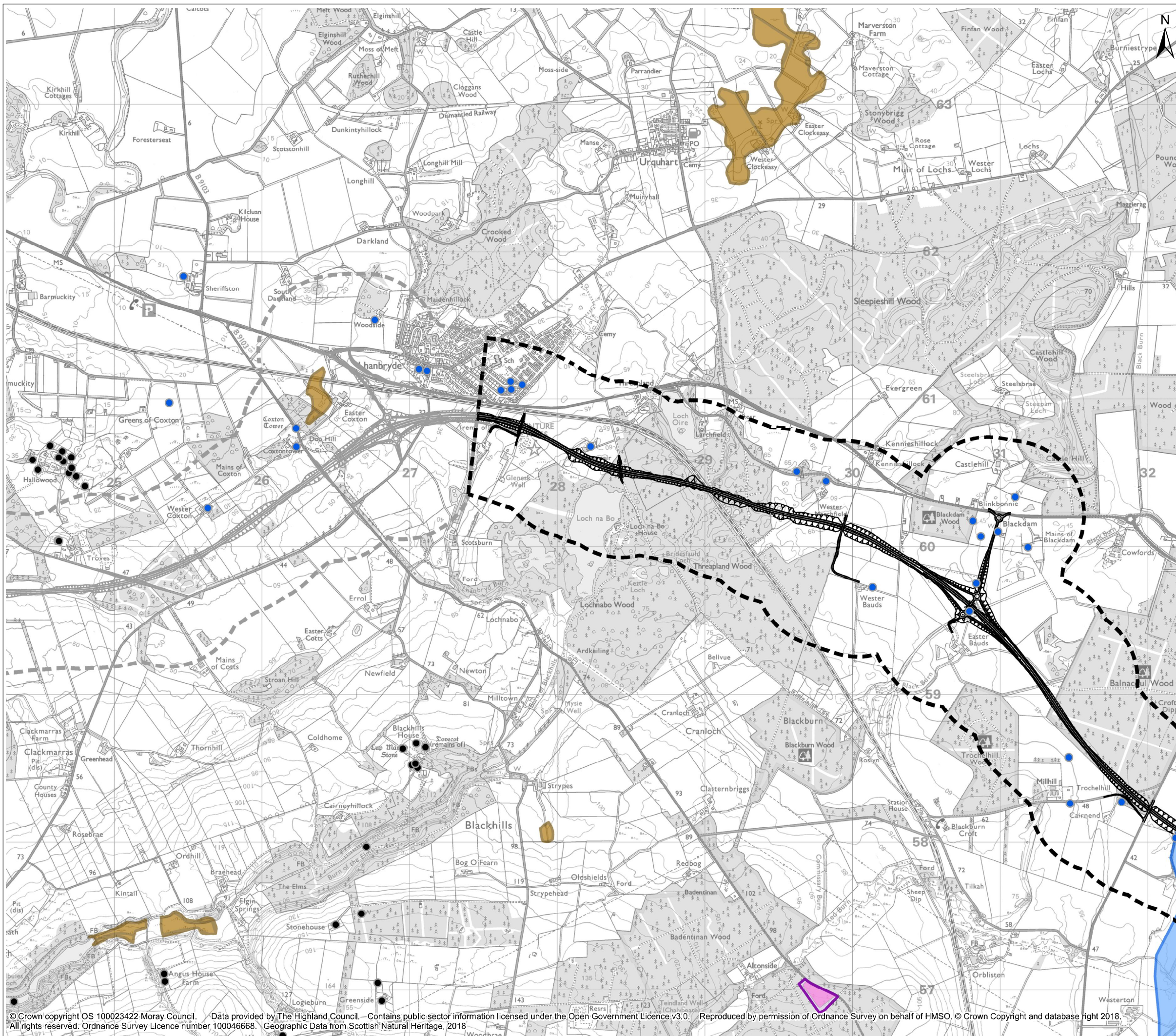


Project
**A96 Dualling
Hardmuir to Fochabers**

Drawing Title
**Figure 19.3b Geology, Soils, Contaminated Land & Groundwater
Lhanbryde to East of Fochabers - North Option**

Scale @ A3	1:25,000	DO NOT SCALE
Project No.	117880	Status
BIM No.	A96PHF-MMS-EGN-00000-DR-CS-00045	A2

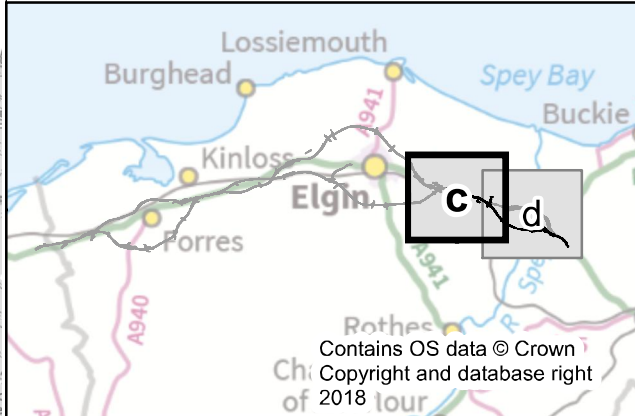
This drawing should not be relied on or used in circumstances other than those for which it was originally prepared and for which the Mott MacDonald Sweco (MMS) Joint Venture was commissioned. MMS accepts no responsibility for this drawing to any party other than the person by whom it was commissioned. Any party which breaches the provisions of this disclaimer shall indemnify MMS for all loss or damage arising therefrom.



- Legend**
- Route option
 - 500m Buffer
 - Distillery Private Water Supply location
 - Private Water Supply location
 - Well location
 - Approximate extent of Spey Abstraction Scheme Aquifer
 - Approximate extent of peat or mixed peat and peaty soils (Scottish Natural Heritage Carbon and Peat mapping)
 - Geological Conservation Review (GCR) site
 - Site of Special Scientific Interest (SSSI)*

*Note: Dataset only shows geological SSSI records relevant to assessment

0 250 500 1,000 1,500 Metres



C01	27/11/2018	Approved as Stage Complete	JB	KF
Rev.	Rev. Date	Drawing Suitability	Drawn	Appr'd

Mott MacDonald Sweco



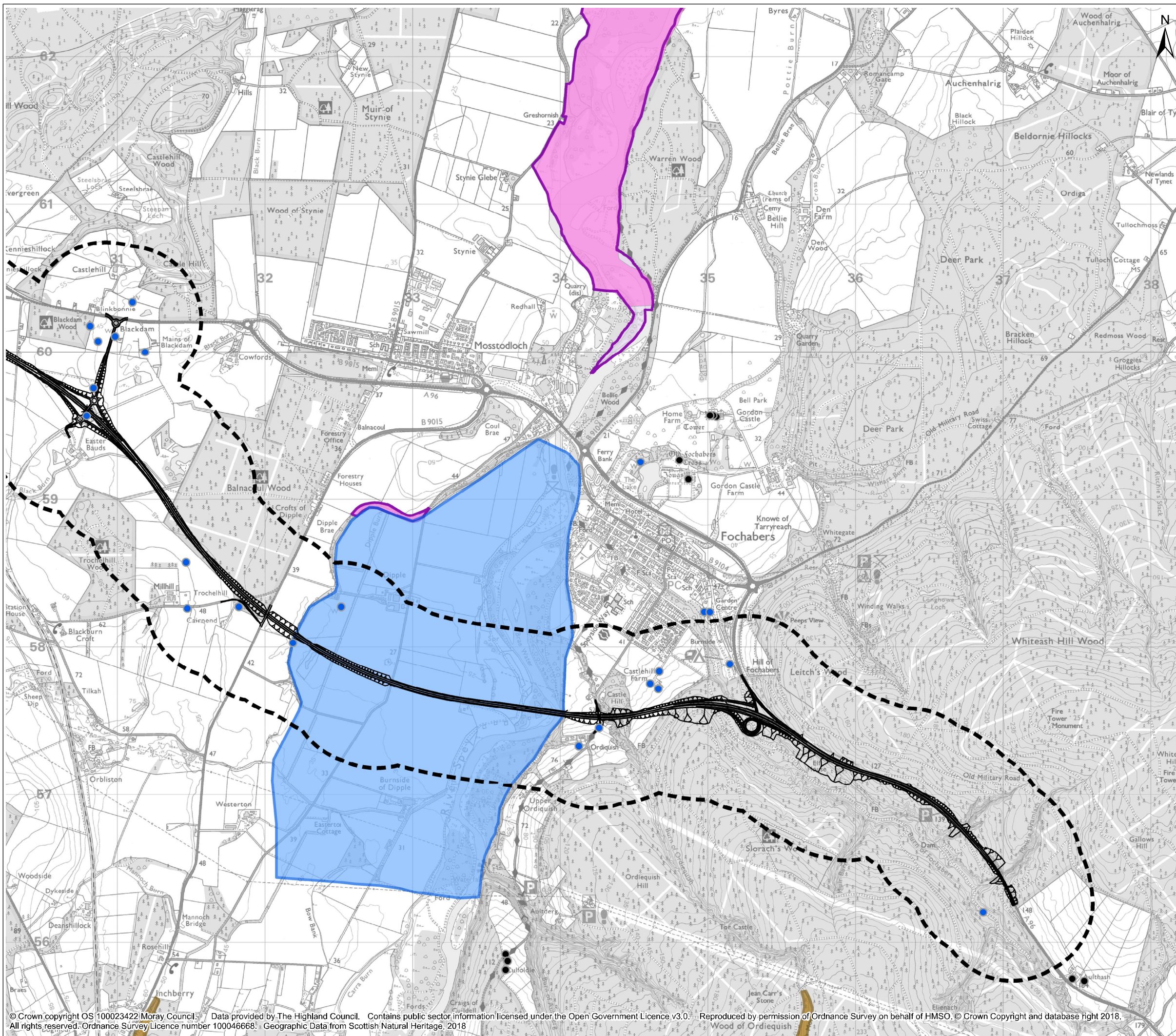
Project **A96 Dualling Hardmuir to Fochabers**

Drawing Title **Figure 19.3c Geology, Soils, Contaminated Land & Groundwater Lhanbryde to East of Fochabers - South Option**

Scale @ A3 1:25,000 DO NOT SCALE

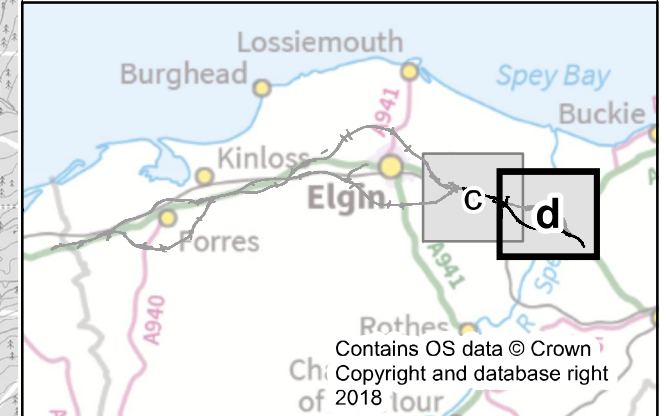
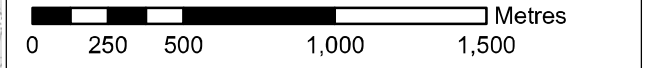
Project No. 117880 Status A2

BIM No. A96PHF-MMS-EGN-00000-DR-CS-00045



- Legend**
- Route option
 - 500m Buffer
 - Distillery Private Water Supply location
 - Private Water Supply location
 - Well location
 - Approximate extent of Spey Abstraction Scheme Aquifer
 - Approximate extent of peat or mixed peat and peaty soils (Scottish Natural Heritage Carbon and Peat mapping)
 - Geological Conservation Review (GCR) site
 - Site of Special Scientific Interest (SSSI)*

*Note: Dataset only shows geological SSSI records relevant to assessment



C01	27/11/2018	Approved as Stage Complete	JB	KF
Rev.	Rev. Date	Drawing Suitability	Drawn	Appr'd

Mott MacDonald Sweco



Project
**A96 Dualling
Hardmuir to Fochabers**

Drawing Title
**Figure 19.3d Geology, Soils, Contaminated Land & Groundwater
Lhanbryde to East of Fochabers - South Option**

Scale @ A3	1:25,000	DO NOT SCALE
Project No.	117880	Status A2
BIM No.	A96PHF-MMS-EGN-00000-DR-CS-00045	

This drawing should not be relied on or used in circumstances other than those for which it was originally prepared and for which the Mott MacDonald Sweco (MMS) Joint Venture was commissioned. MMS accepts no responsibility for this drawing to any party other than the person by whom it was commissioned. Any party which breaches the provisions of this disclaimer shall indemnify MMS for all loss or damage arising therefrom.