

- Mainline Option 2 (Combination of Northbound and Southbound Widening)
- 50m Study Area
- Trees with Bat Roost Potential (Tr)**
- Moderate
- Locations identified as potential crossings points over or under the A9 (CP)**
- Moderate



Status: FINAL Substudy: B

Client: **TRANSPORT SCOTLAND**
COMHDHAIL ALBA

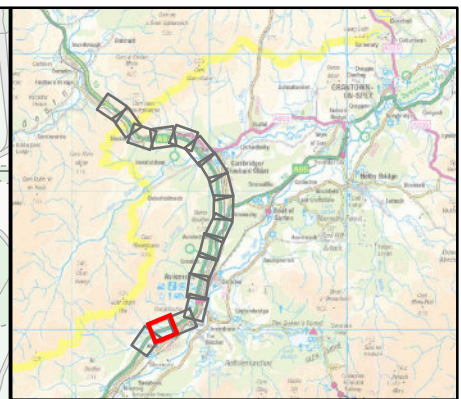
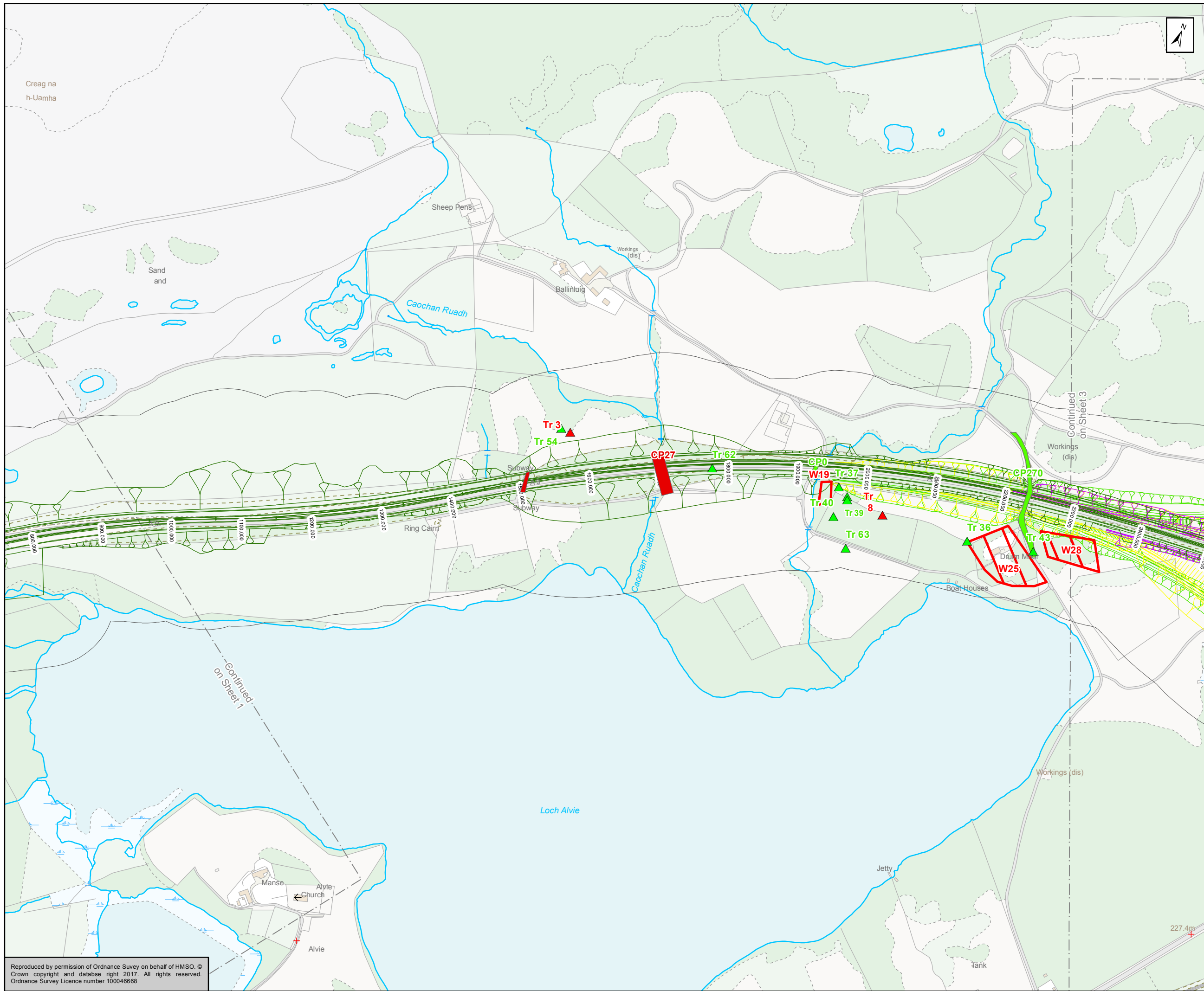


ATKINS mouchel

Title: **Figure 11.6a (2)
Bats Habitat/ Roost Assessment -
Woodland and Trees
and Crossing Points
Sheet 1 of 17**

Scale: 1:5,000	Drawn: MM	Checked: SK	Approved: ROB	Authorised: SB
Document Number: A9P11-AMJ-EBD-F_ZZZZZ_XX-DR-GI-0056	Project Originator: A9P11-AMJ-EBD-F_ZZZZZ_XX-DR-GI-0056	Volume: A9P11-AMJ-EBD-F_ZZZZZ_XX-DR-GI-0056	Revision: P03	
Location:	Type:	Role:	Number:	

Reproduced by permission of Ordnance Survey on behalf of HMSO. © Crown copyright and database right 2017. All rights reserved. Ordnance Survey Licence number 100046668



Mainline Option 2 (Combination of Northbound and Southbound Widening)

Aviemore South Junction Options (Southbound Widening)

- A02 - Half Cloverleaf - Quadrants 1 & 4
- A09 - Diamond Left Right with Ghost Island
- A18 - Left Right Stagger with B9152 Realigned

50m Study Area

Trees with Bat Roost Potential (Tr)

- ▲ High
- ▲ Moderate

Woodland blocks with Bat Roost Potential (W)

- ▭ High

Locations identified as potential crossings points over or under the A9 (CP)

- ▭ High
- ▭ Moderate

Kilometres
0 0.1 0.2

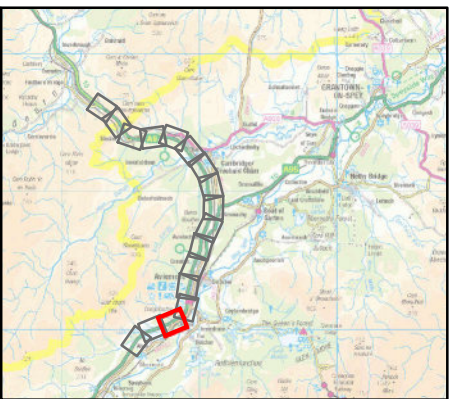
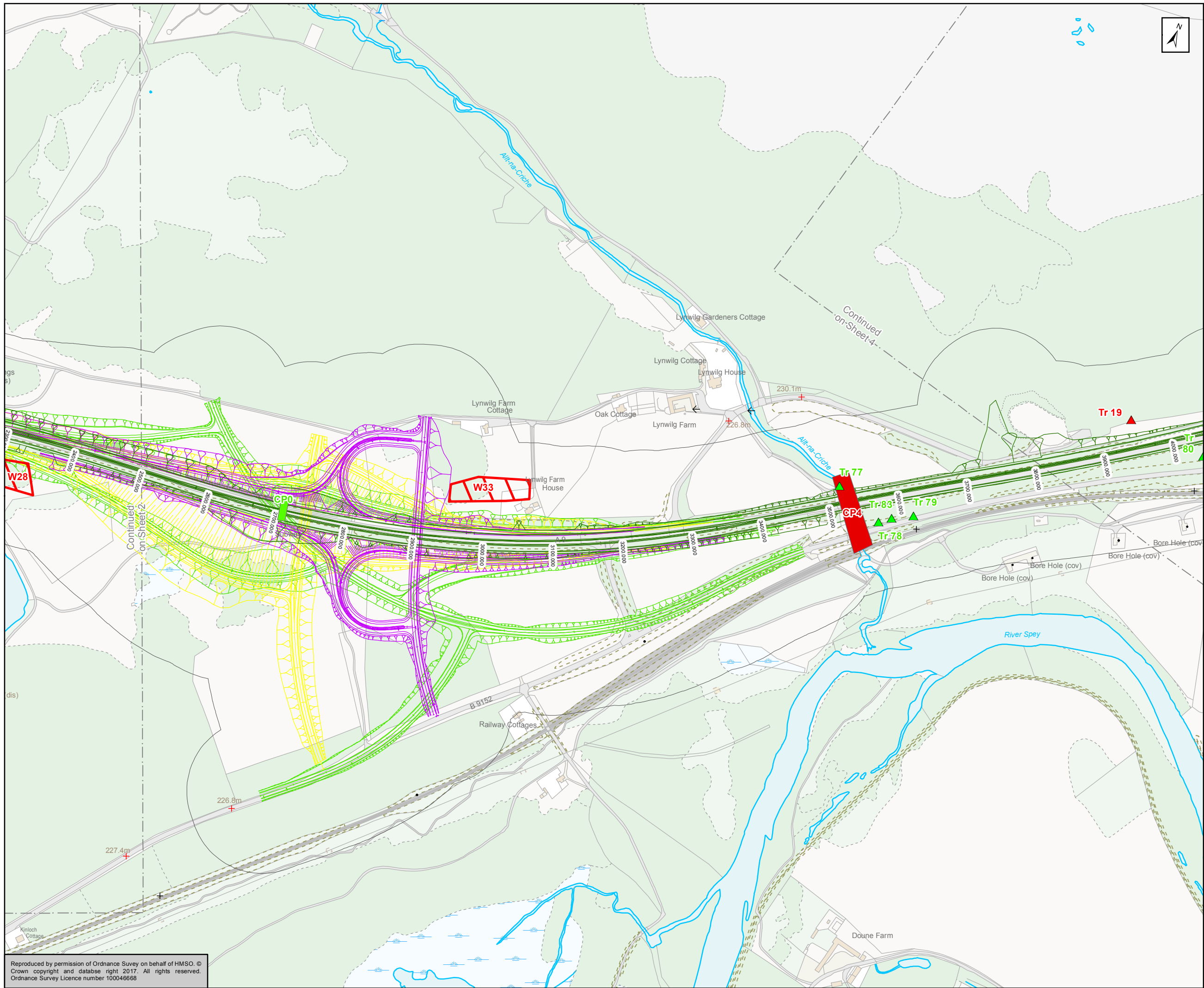
Scale	1:5,000
Status	FINAL
Subsidiary	B



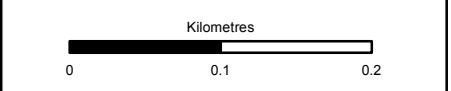
Figure 11.6a (2)
Bats Habitat/ Roost Assessment -
Woodland and Trees
and Crossing Points
Sheet 2 of 17

Drawn	MM	Checked	SK	Approved	ROB	Authorised	SB	
Document Number	A9P11-AMJ-EBD-F_ZZZZZ_XX-DR-GI-0057						Revision	P03
Project	Originator	Volume						
Location	Type	Role	Number					

Reproduced by permission of Ordnance Survey on behalf of HMSO. © Crown copyright and database right 2017. All rights reserved. Ordnance Survey Licence number 100046668



- Mainline Option 2 (Combination of Northbound and Southbound Widening)
- Aviemore South Junction Options (Southbound Widening)**
- A02 - Half Cloverleaf - Quadrants 1 & 4
- A09 - Diamond Left Right with Ghost Island
- A18 - Left Right Stagger with B9152 Realigned
- 50m Study Area
- Trees with Bat Roost Potential (Tr)**
- ▲ High
- ▲ Moderate
- Woodland blocks with Bat Roost Potential (W)**
- High
- Locations identified as potential crossings over or under the A9 (CP)**
- High
- Moderate



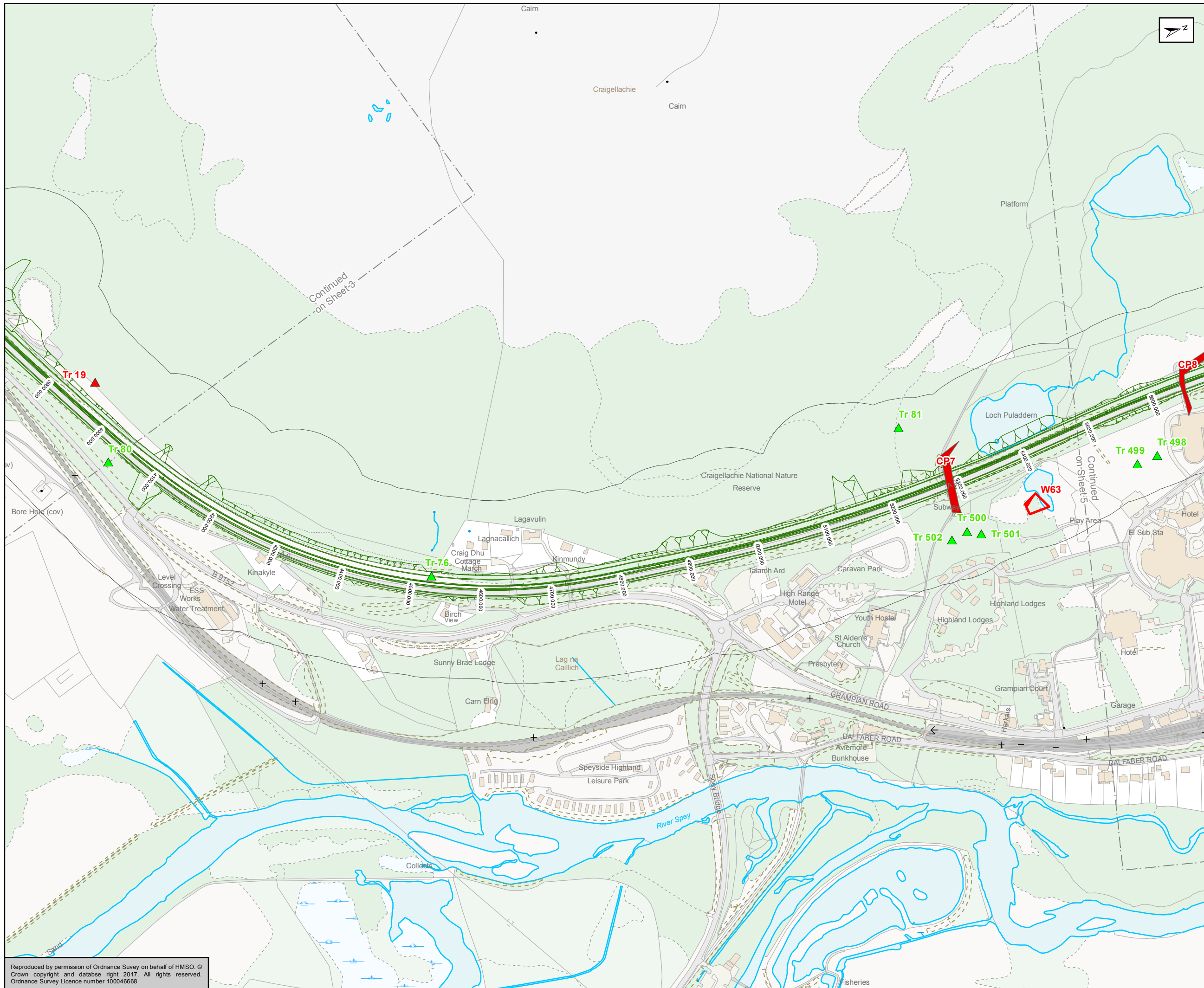
Status	Subsidiary
FINAL	B



Figure 11.6a (2)
Bats Habitat/ Roost Assessment -
Woodland and Trees
and Crossing Points
Sheet 3 of 17

Scale	Drawn	Checked	Approved	Authorised
1:5,000	MM	SK	ROB	SB
Document Number	Project	Originator	Volume	Revision
	A9P11-AMJ-EBD-F_ZZZZ_X-DR-GI-0058			P03
Location	Type	Role	Number	

Reproduced by permission of Ordnance Survey on behalf of HMSO. © Crown copyright and database right 2017. All rights reserved. Ordnance Survey Licence number 100046668



Mainline Option 2 (Combination of Northbound and Southbound Widening)

50m Study Area

Trees with Bat Roost Potential (Tr)

- ▲ High
- ▲ Moderate

Woodland blocks with Bat Roost Potential (W)

- ▭ High

Locations identified as potential crossings points over or under the A9 (CP)

- ▭ High

Kilometres

0 0.1 0.2

Status	FINAL	Subsidiary	B
--------	-------	------------	---

Client

TRANSPORT SCOTLAND
COMHDHAIL ALBA

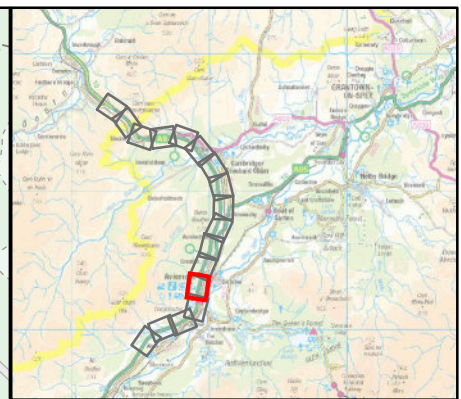
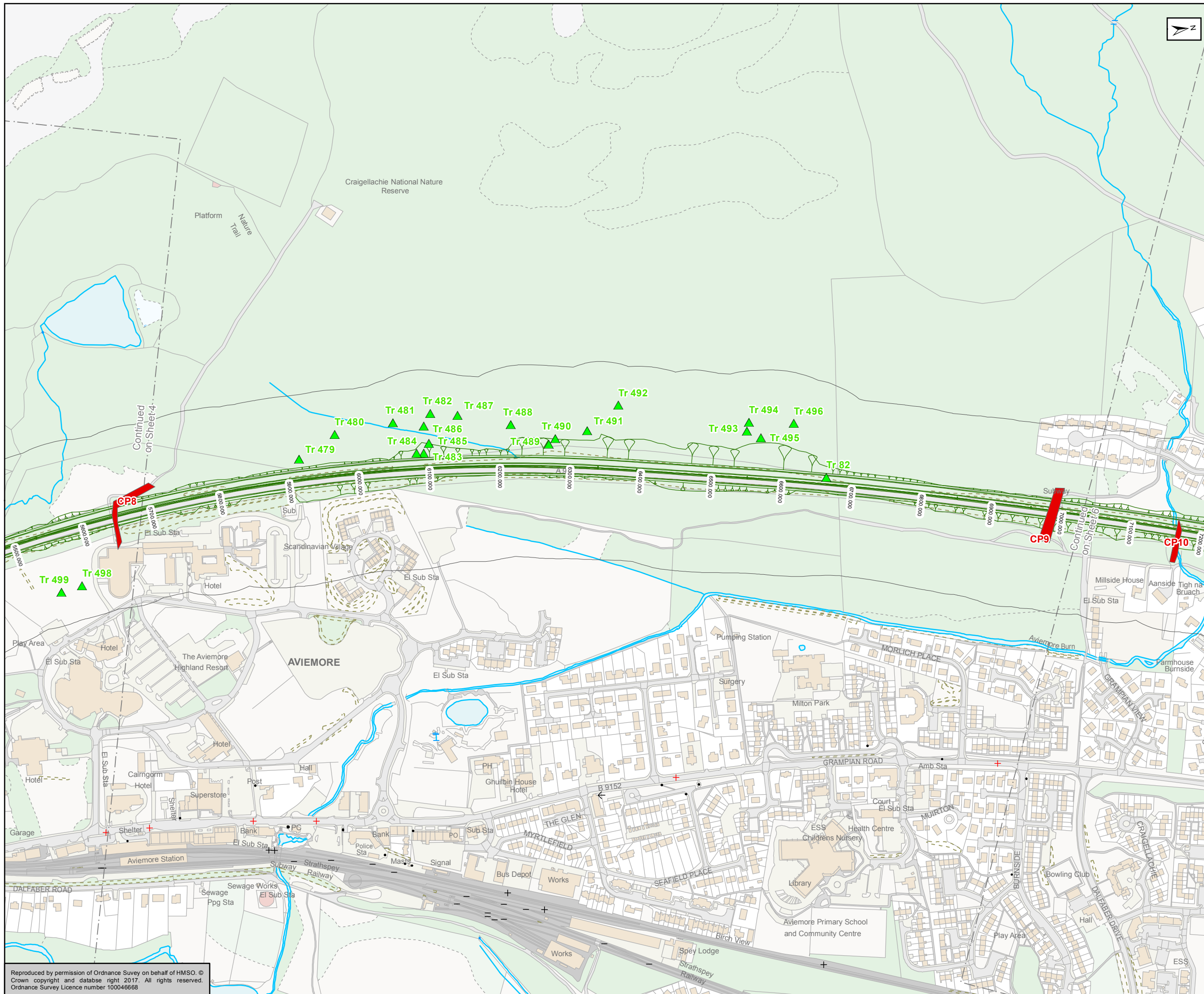
A9
DUALLING
PERTH TO INVERNESS
Dalraddy to Slochd

ATKINS mouchel

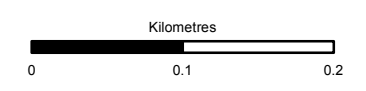
Figure 11.6a (2)
Bats Habitat/ Roost Assessment -
Woodland and Trees
and Crossing Points
Sheet 4 of 17

Scale	1:5,000	Drawn	MM	Checked	SK	Approved	ROB	Authorised	SB
Document Number	A9P11-AMJ-EBD-F_ZZZZZ_XX-DR-GI-0059							Revision	P03
Project	Originator		Volume		Number				
Location	Type	Role	Number						

Reproduced by permission of Ordnance Survey on behalf of HMSO. © Crown copyright and database right 2017. All rights reserved. Ordnance Survey Licence number 100046668



- Mainline Option 2 (Combination of Northbound and Southbound Widening)
- 50m Study Area
- Trees with Bat Roost Potential (Tr)**
- Moderate
- Locations identified as potential crossings points over or under the A9 (CP)**
- High



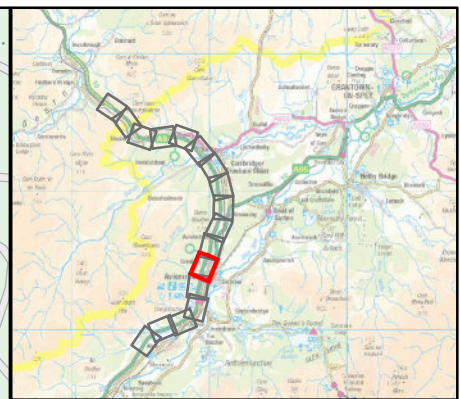
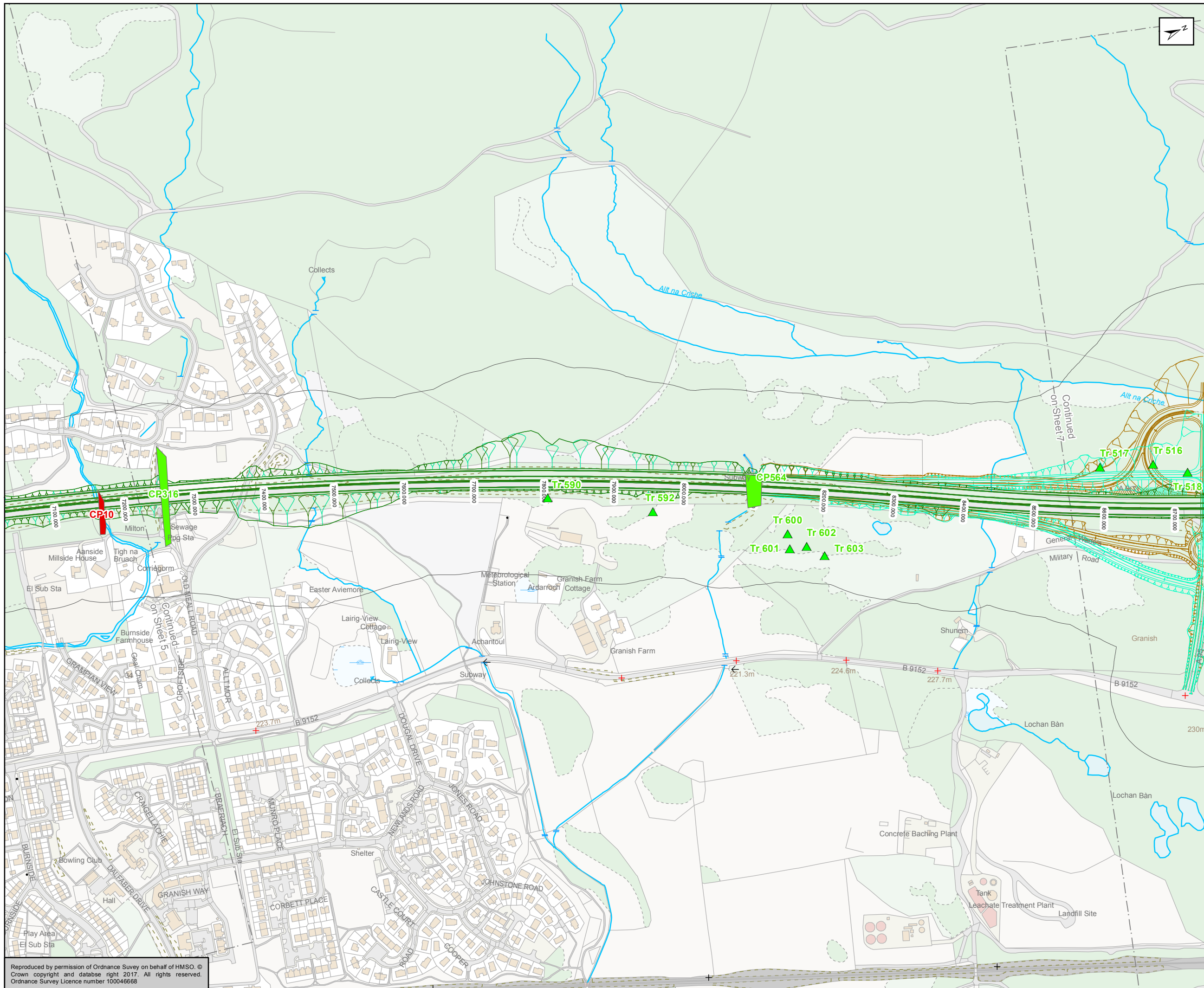
Status: FINAL Substudy: B



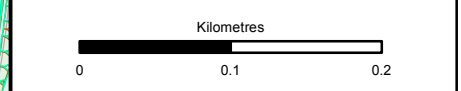
Figure 11.6a (2)
 Bats Habitat/ Roost Assessment -
 Woodland and Trees
 and Crossing Points
 Sheet 5 of 17

Scale: 1:5,000	Drawn: MM	Checked: SK	Approved: ROB	Authorised: SB
Document Number: A9P11-AMJ-EBD-F_ZZZZZ_XX-DR-GI-0060	Project Originator: P03	Volume: P03	Revision: P03	
Location:	Type:	Role:	Number:	

Reproduced by permission of Ordnance Survey on behalf of HMSO. © Crown copyright and database right 2017. All rights reserved. Ordnance Survey Licence number 100046668



- Mainline Option 2 (Combination of Northbound and Southbound Widening)
- Granish Junction Options (Northbound Widening)**
- C18 - Diamond
- C21 - Half Dumbbell / Cloverleaf
- 50m Study Area
- Trees with Bat Roost Potential (Tr)**
- ▲ Moderate
- Locations identified as potential crossings points over or under the A9 (CP)**
- High
- Moderate



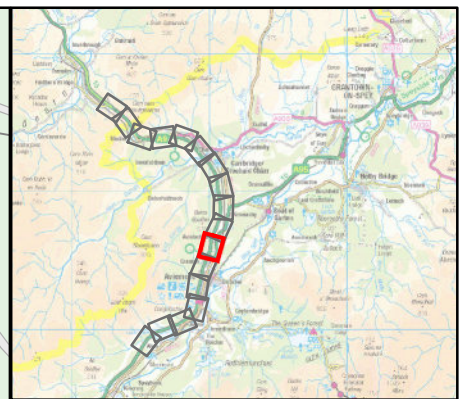
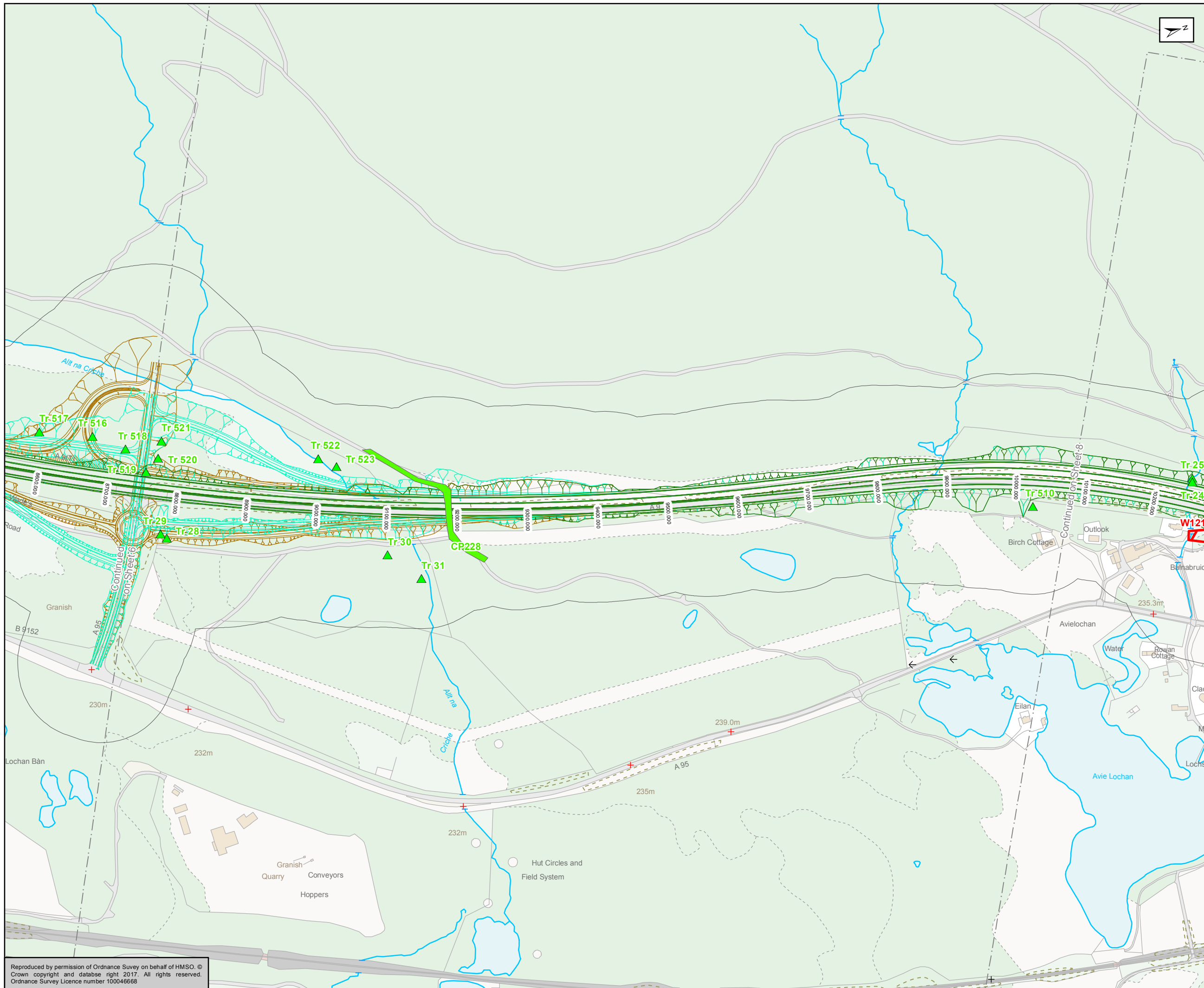
Status: FINAL Substudy: B



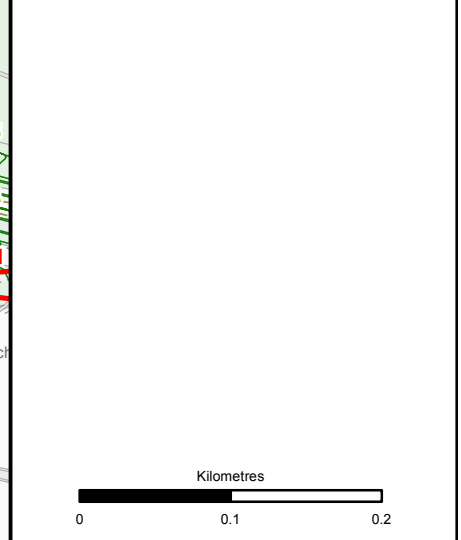
Figure 11.6a (2)
 Bats Habitat/ Roost Assessment -
 Woodland and Trees
 and Crossing Points
 Sheet 6 of 17

Scale: 1:5,000	Drawn: MM	Checked: SK	Approved: ROB	Authorised: SB
Document Number: A9P11-AMJ-EBD-F_ZZZZZ_XX-DR-GI-0061	Project Originator: A9P11-AMJ-EBD-F_ZZZZZ_XX-DR-GI-0061	Volume: P03	Revision: P03	

Reproduced by permission of Ordnance Survey on behalf of HMSO. © Crown copyright and database right 2017. All rights reserved. Ordnance Survey Licence number 100046668



- Mainline Option 2 (Combination of Northbound and Southbound Widening)
- Granish Junction Options (Northbound Widening)**
- C18 - Diamond
- C21 - Half Dumbbell / Cloverleaf
- 50m Study Area
- Trees with Bat Roost Potential (Tr)**
- Moderate
- Woodland blocks with Bat Roost Potential (W)**
- High
- Moderate



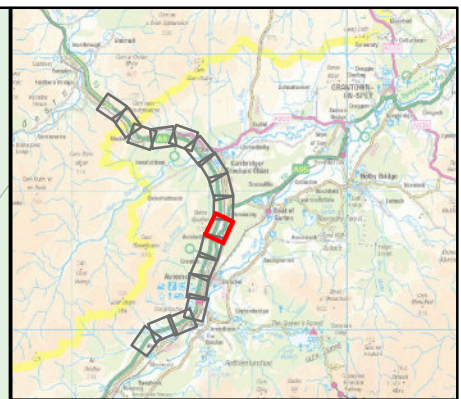
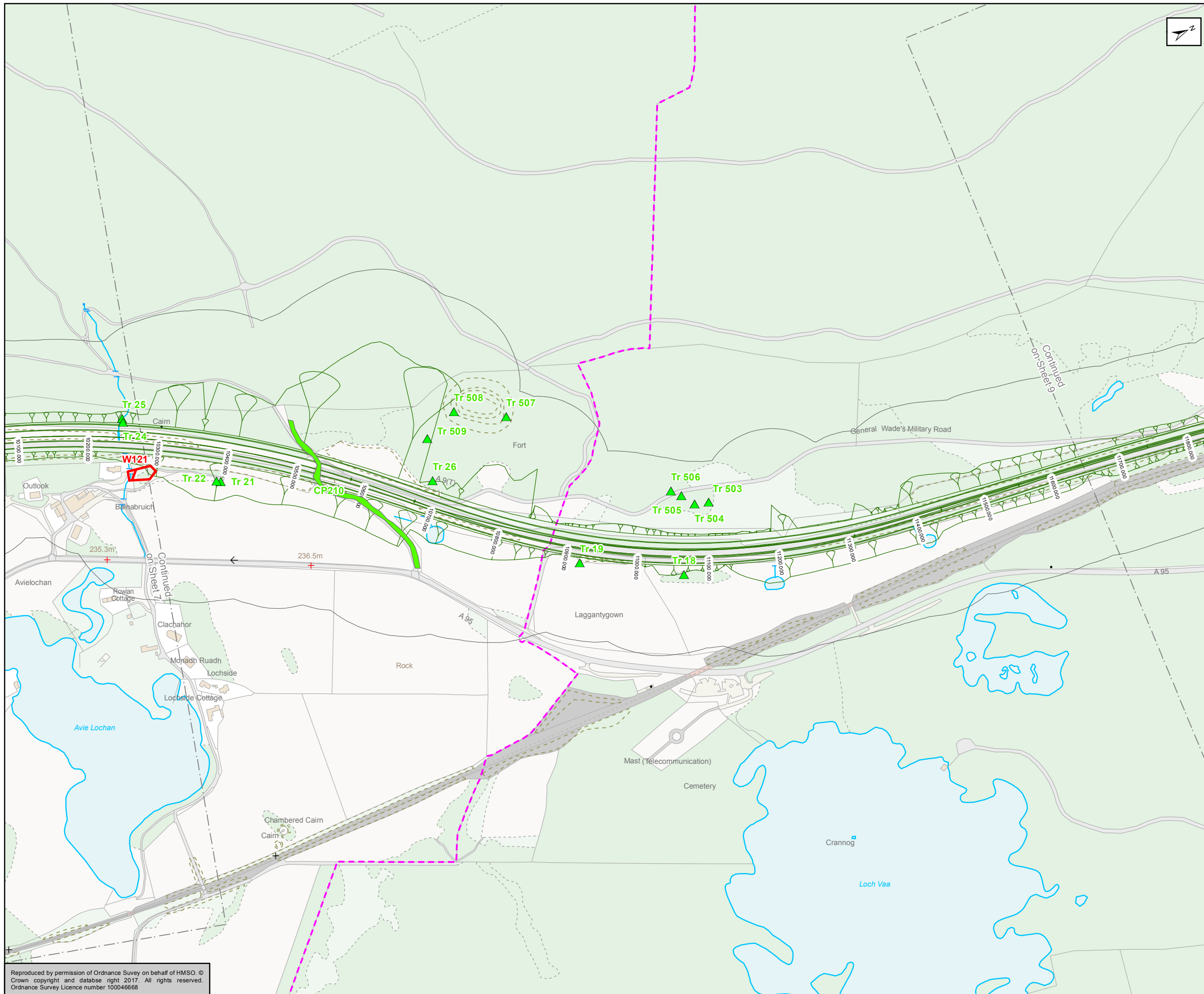
Status: FINAL
Subsidiary: B



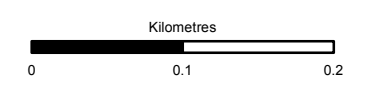
Title: Figure 11.6a (2)
Bats Habitat/ Roost Assessment -
Woodland and Trees
and Crossing Points
Sheet 7 of 17

Scale: 1:5,000	Drawn: MM	Checked: SK	Approved: ROB	Authorised: SB
Document Number: A9P11-AMJ-EBD-F_ZZZZZ_XX-DR-GI-0062	Project: A9P11-AMJ-EBD-F_ZZZZZ_XX-DR-GI-0062	Originator: SK	Volume: ROB	Revision: SB
Location:	Type:	Role:	Number:	P03

Reproduced by permission of Ordnance Survey on behalf of HMSO. © Crown copyright and database right 2017. All rights reserved. Ordnance Survey Licence number 100046668



- Mainline Option 2 (Combination of Northbound and Southbound Widening)
- 50m Study Area
- Trees with Bat Roost Potential (Tr)**
- Moderate
- Woodland blocks with Bat Roost Potential (W)**
- High
- Locations identified as potential crossings points over or under the A9 (CP)**
- Moderate



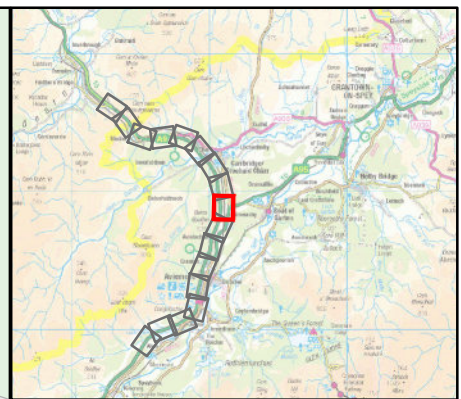
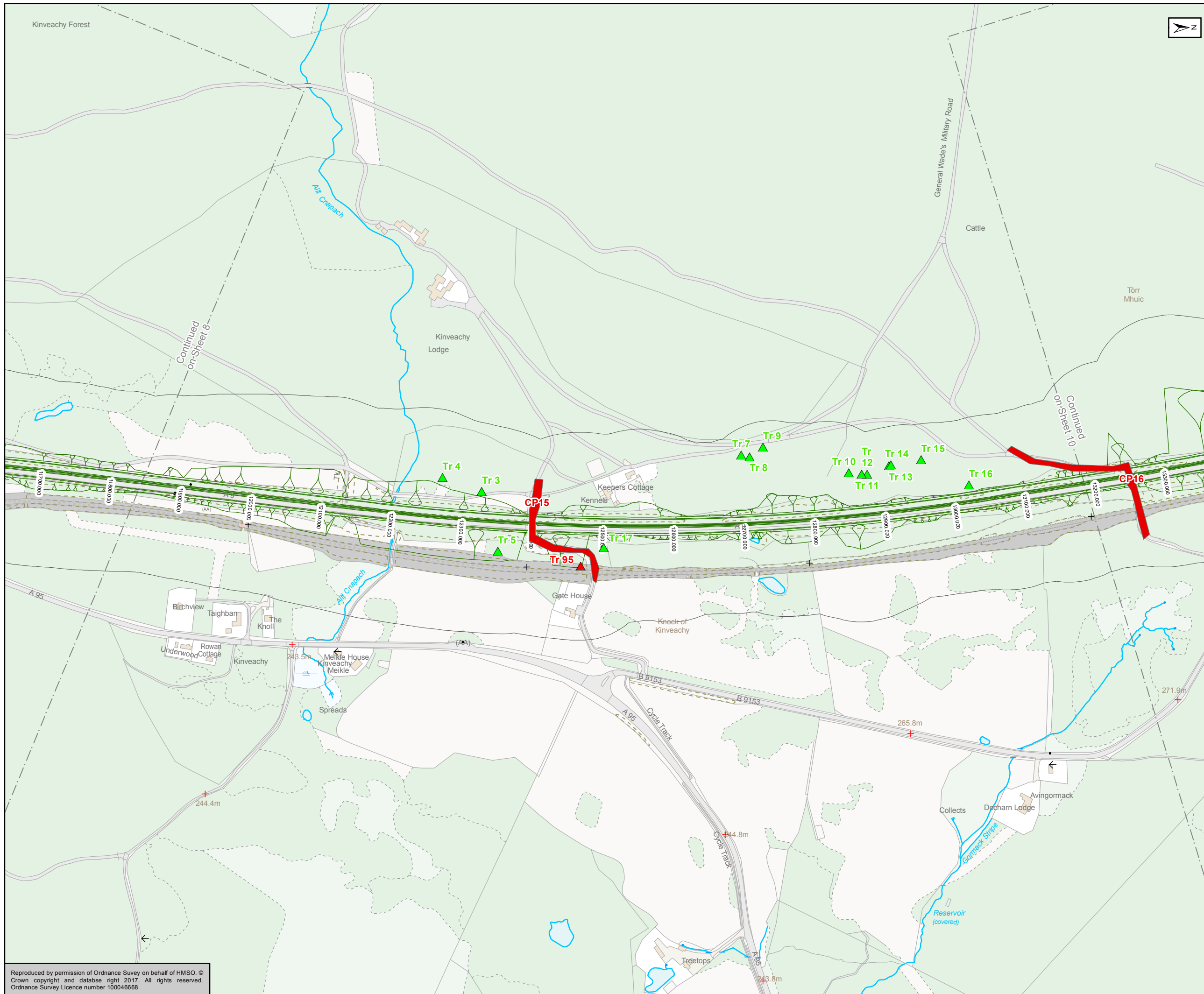
Status	FINAL	Subsidiary	B
--------	-------	------------	---



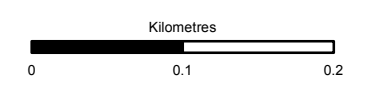
Figure 11.6a (2)
Bats Habitat/ Roost Assessment -
Woodland and Trees
and Crossing Points
Sheet 8 of 17

Scale	1:5,000	Drawn	MM	Checked	SK	Approved	ROB	Authorised	SB
Document Number	A9P11-AMJ-EBD-F_ZZZZZ_XX-DR-GI-0063							Revision	P03
Project	Originator	Volume							
Location	Type	Role	Number						

Reproduced by permission of Ordnance Survey on behalf of HMSO. © Crown copyright and database right 2017. All rights reserved. Ordnance Survey Licence number 100046668



- Mainline Option 2 (Combination of Northbound and Southbound Widening)
- 50m Study Area
- Trees with Bat Roost Potential (Tr)**
- High
- Moderate
- Locations identified as potential crossings points over or under the A9 (CP)**
- High



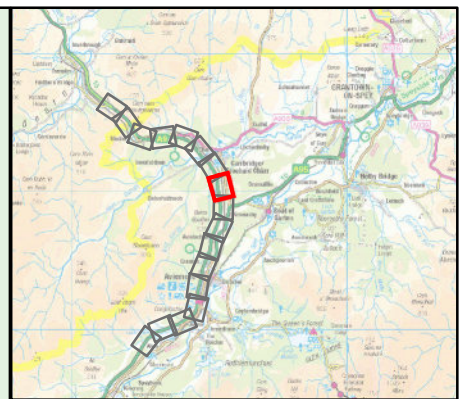
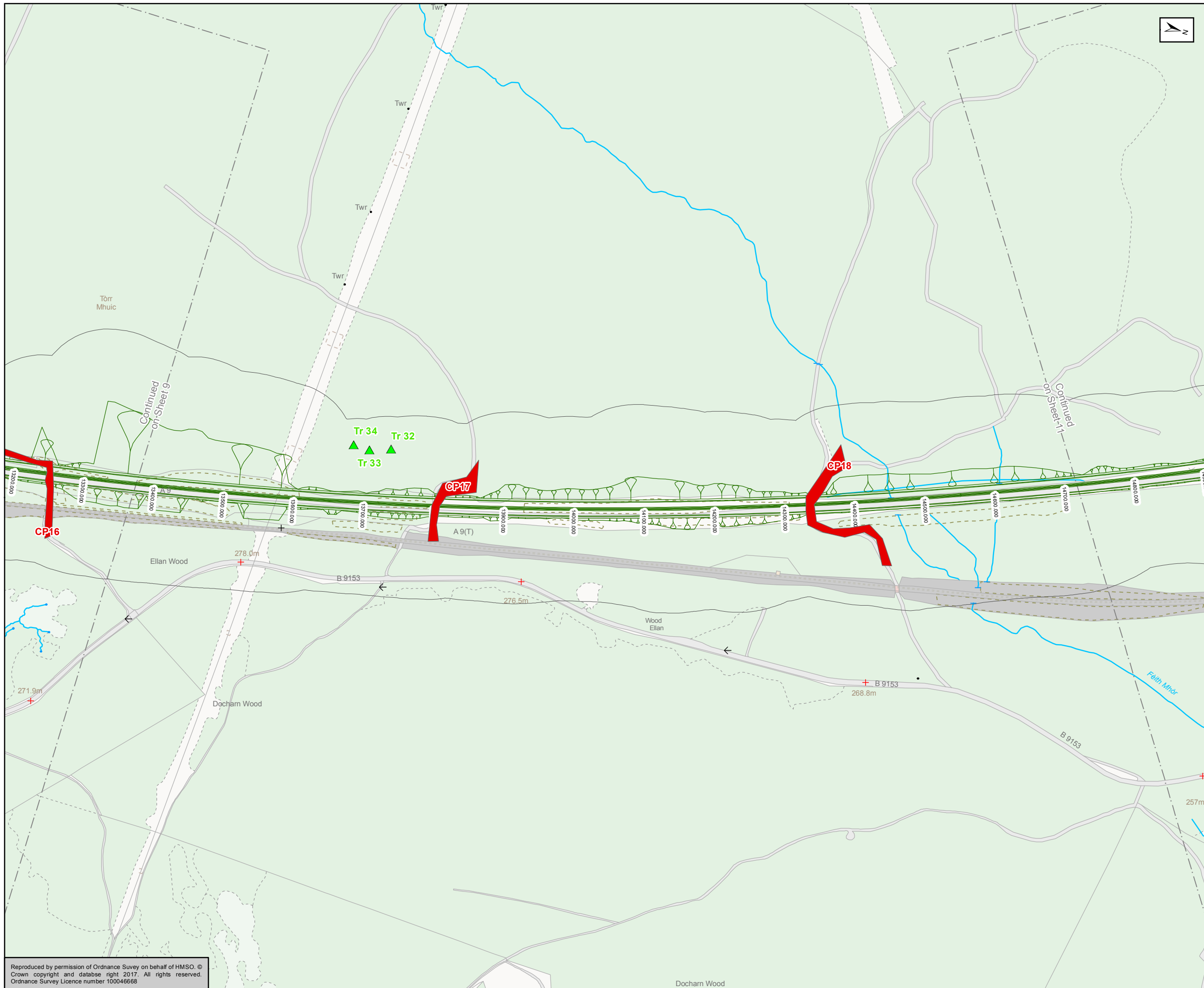
Status	FINAL	Subsidiary	B
--------	-------	------------	---



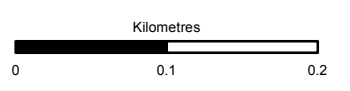
Figure 11.6a (2)
 Bats Habitat/ Roost Assessment -
 Woodland and Trees
 and Crossing Points
 Sheet 9 of 17

Scale	1:5,000	Drawn	MM	Checked	SK	Approved	ROB	Authorised	SB
Document Number	A9P11-AMJ-EBD-F_ZZZZZ_XX-DR-GI-0064							Revision	P03
Project	Originator		Volume						
Location	Type	Role	Number						

Reproduced by permission of Ordnance Survey on behalf of HMSO. © Crown copyright and database right 2017. All rights reserved. Ordnance Survey Licence number 100046668



- Mainline Option 2 (Combination of Northbound and Southbound Widening)
- 50m Study Area
- Trees with Bat Roost Potential (Tr)**
- Moderate
- Locations identified as potential crossings points over or under the A9 (CP)**
- High



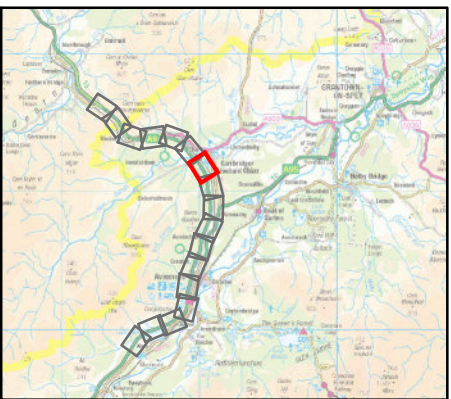
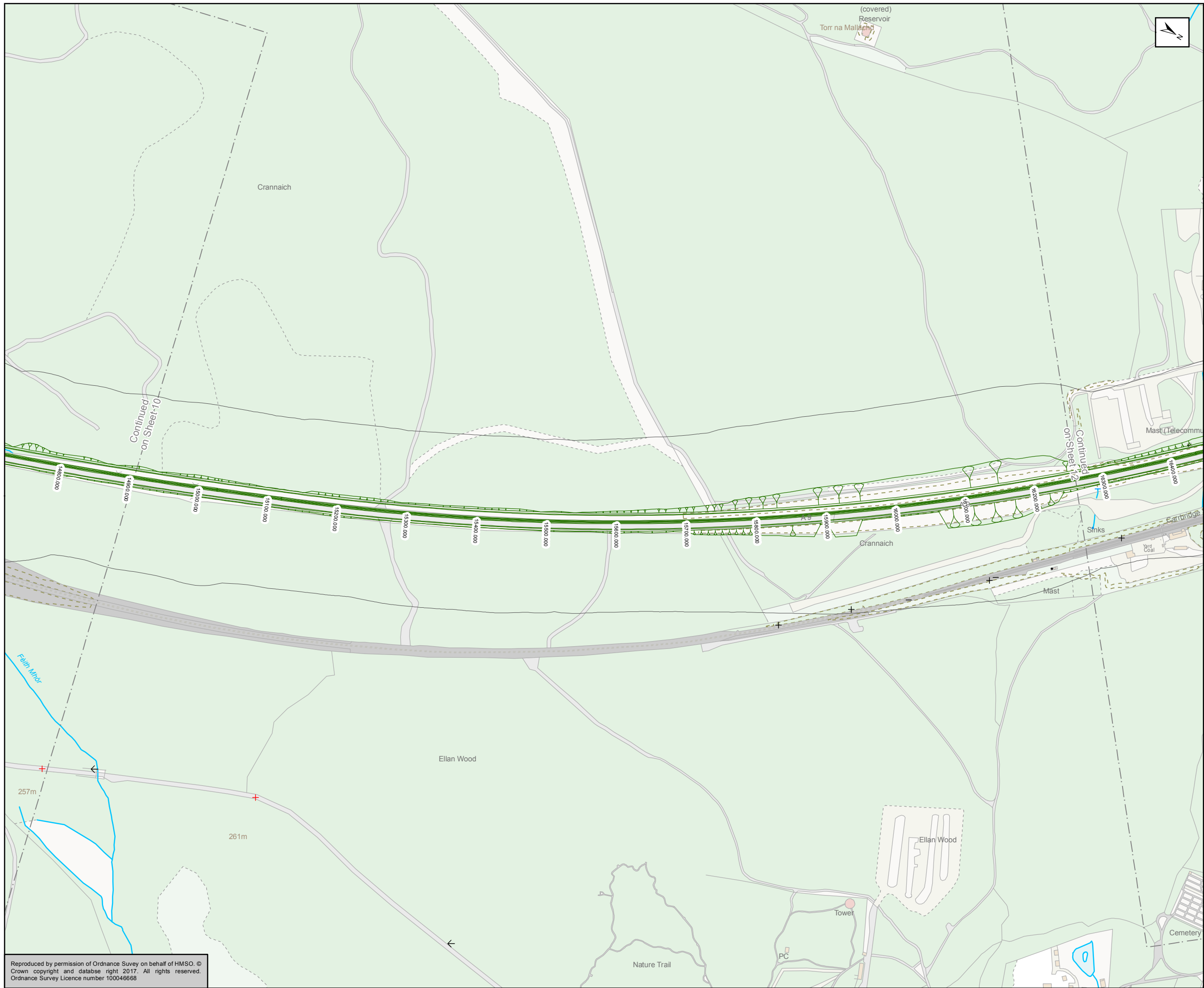
Status	FINAL	Subsidiary	B
--------	-------	------------	---





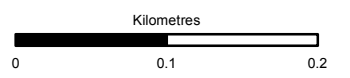
Figure 11.6a (2)
Bats Habitat/ Roost Assessment -
Woodland and Trees
and Crossing Points
Sheet 10 of 17

Scale	1:5,000	Drawn	MM	Checked	SK	Approved	ROB	Authorised	SB	
Document Number	A9P11-AMJ-EBD-F_ZZZZZ_XX-DR-GI-0065								Revision	P03
Project	Originator	Volume								
Location	Type	Role	Number							

Reproduced by permission of Ordnance Survey on behalf of HMSO. © Crown copyright and database right 2017. All rights reserved. Ordnance Survey Licence number 100046668



 Mainline Option 2 (Combination of Northbound and Southbound Widening)
 50m Study Area



Status: FINAL
 Substudy: B

Client: **TRANSPORT SCOTLAND**
 COMHDHAIL ALBA

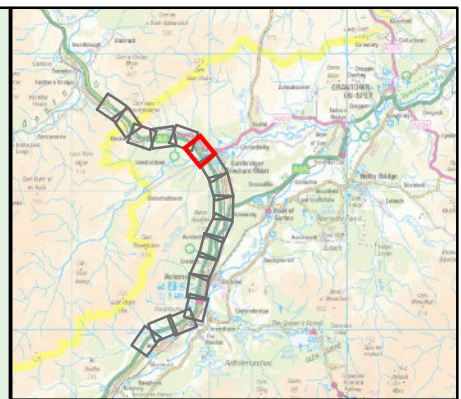
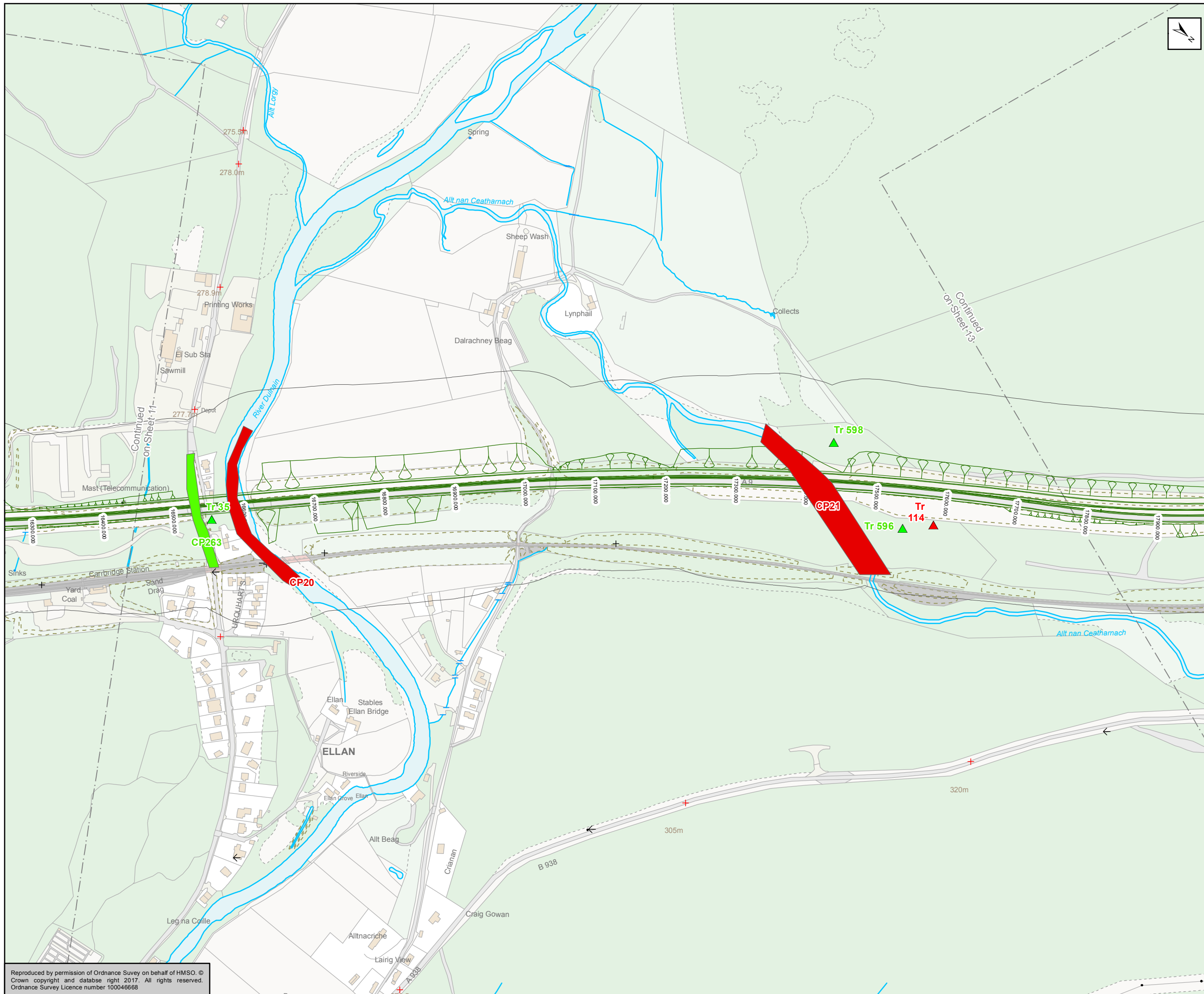


ATKINS mouchel

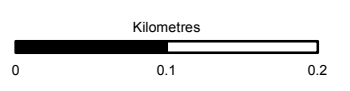
Title: **Figure 11.6a (2)
 Bats Habitat/ Roost Assessment -
 Woodland and Trees
 and Crossing Points
 Sheet 11 of 17**

Scale: 1:5,000	Drawn: MM	Checked: SK	Approved: ROB	Authorised: SB
Document Number: A9P11-AMJ-EBD-F_ZZZZZ_XX-DR-GI-0066	Project: A9P11-AMJ-EBD-F_ZZZZZ_XX-DR-GI-0066	Originator: [blank]	Volume: [blank]	Revision: P03
Location: [blank]	Type: [blank]	Role: [blank]	Number: [blank]	[blank]

Reproduced by permission of Ordnance Survey on behalf of HMSO. ©
 Crown copyright and database right 2017. All rights reserved.
 Ordnance Survey Licence number 100046668



- Mainline Option 2 (Combination of Northbound and Southbound Widening)
- 50m Study Area
- Trees with Bat Roost Potential (Tr)**
- High
- Moderate
- Locations identified as potential crossings points over or under the A9 (CP)**
- High
- Moderate



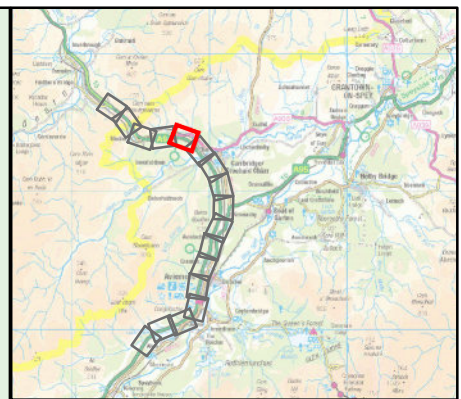
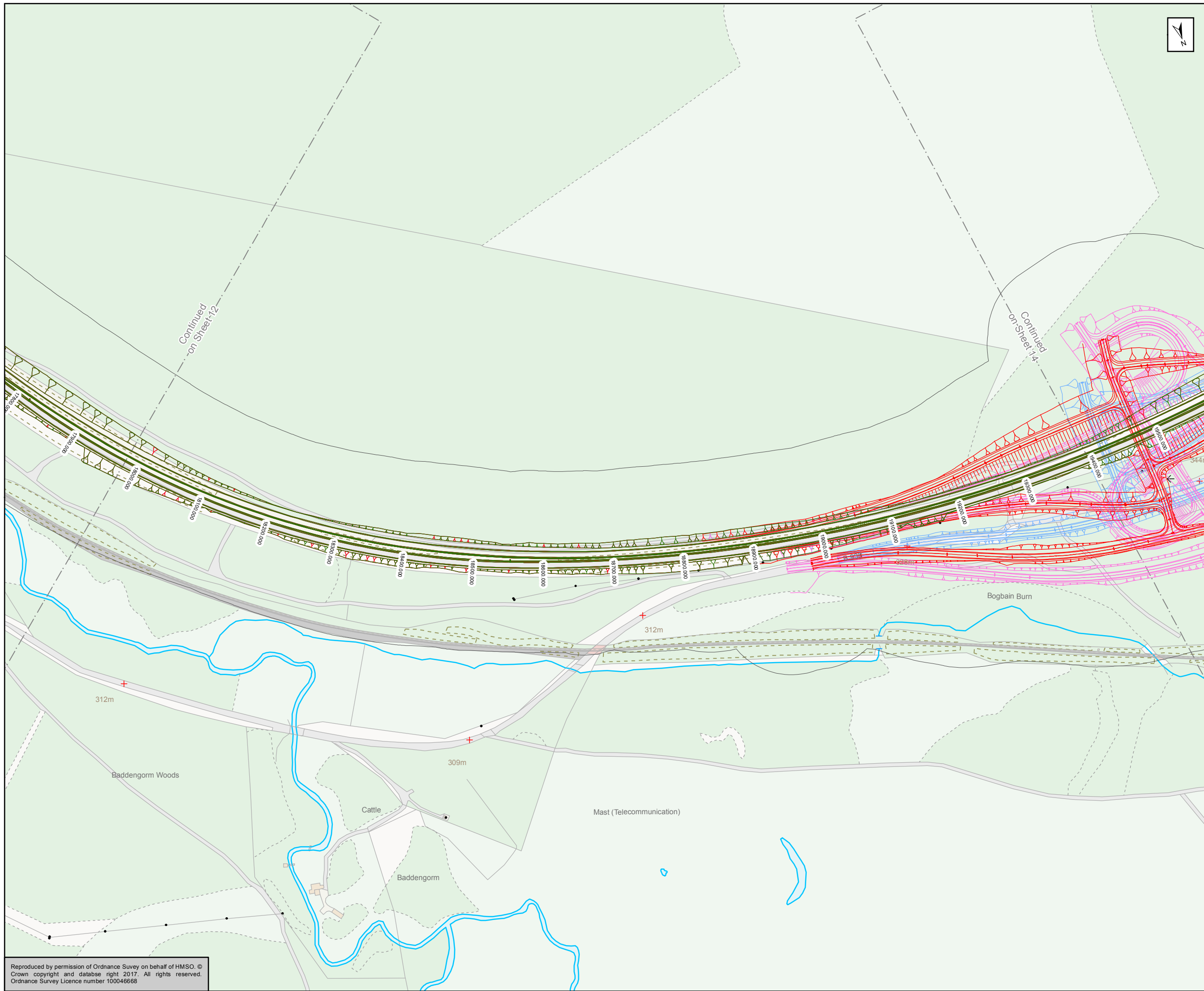
Status	FINAL	Subsidiary	B
--------	-------	------------	---



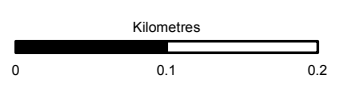
Figure 11.6a (2)
 Bats Habitat/ Roost Assessment -
 Woodland and Trees
 and Crossing Points
 Sheet 12 of 17

Scale	1:5,000	Drawn	MM	Checked	SK	Approved	ROB	Authorised	SB
Document Number	Project Originator Volume A9P11-AMJ-EBD-F_ZZZZZ_XX-DR-GI-0067							Revision	P03
Location	Type	Role	Number						

Reproduced by permission of Ordnance Survey on behalf of HMSO. © Crown copyright and database right 2017. All rights reserved. Ordnance Survey Licence number 100046668



- Mainline Option 2 (Combination of Northbound and Southbound Widening)
- Black Mount Junction Options (Northbound Widening)**
- D02 - Diamond with Left-Right Stagger
- D07 - Half Cloverleaf - Quadrants 2 & 4
- D13 - Restricted Movements Diamond
- 50m Study Area



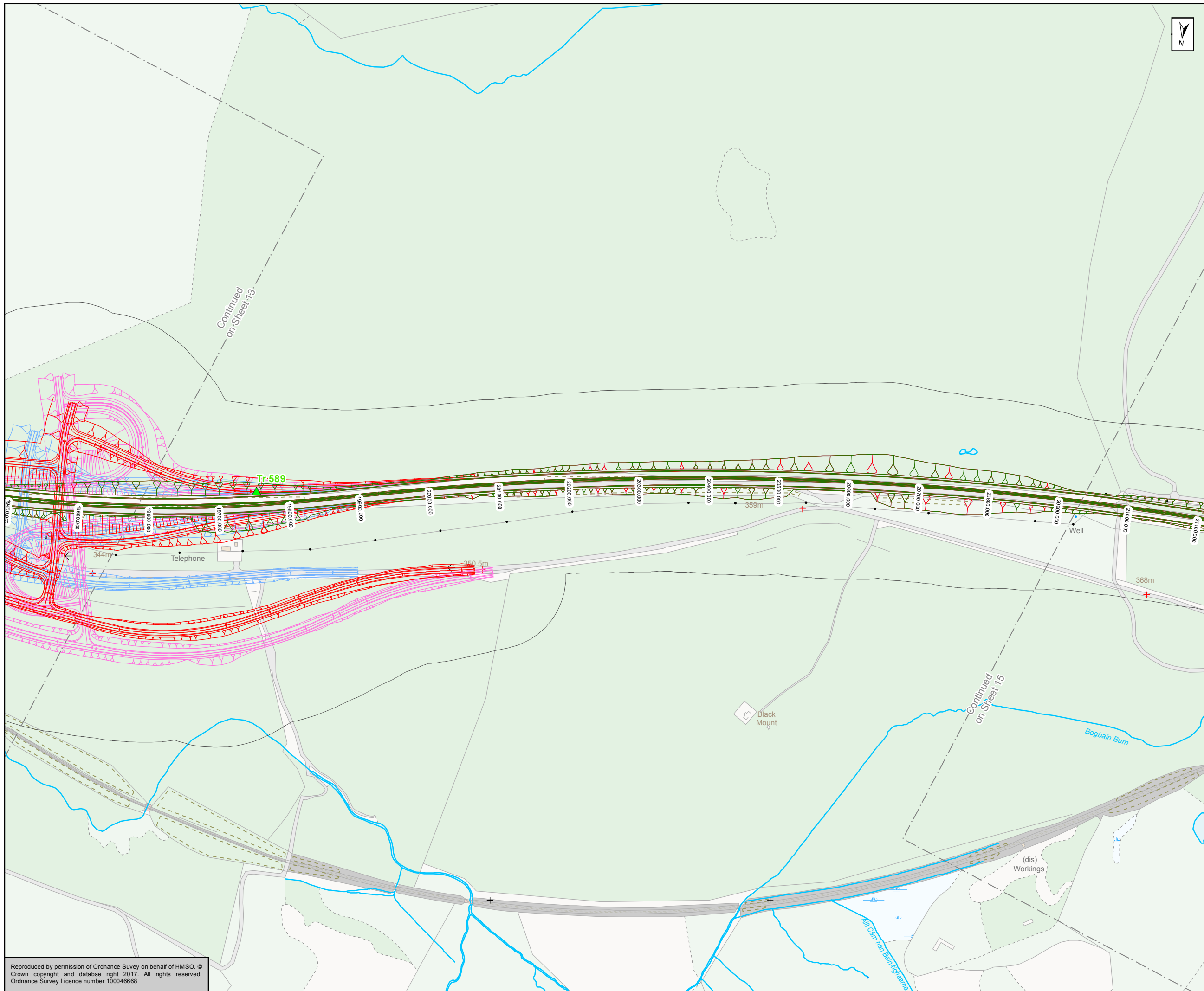
Status	FINAL	Subsidiary	B
--------	-------	------------	---



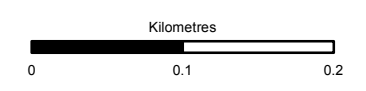
Title
**Figure 11.6a (2)
 Bats Habitat/ Roost Assessment -
 Woodland and Trees
 and Crossing Points
 Sheet 13 of 17**

Scale	1:5,000	Drawn	MM	Checked	SK	Approved	ROB	Authorised	SB
Document Number	Project Originator Volume A9P11-AMJ-EBD-F_ZZZZZ_XX-DR-GI-0068							Revision	P03
Location	Type	Role	Number						

Reproduced by permission of Ordnance Survey on behalf of HMSO. ©
 Crown copyright and database right 2017. All rights reserved.
 Ordnance Survey Licence number 100046668



- Mainline Option 2 (Combination of Northbound and Southbound Widening)
- Black Mount Junction Options (Northbound Widening)**
- D02 - Diamond with Left-Right Stagger
- D07 - Half Cloverleaf - Quadrants 2 & 4
- D13 - Restricted Movements Diamond
- 50m Study Area
- Trees with Bat Roost Potential (Tr)**
- Moderate



Status: FINAL Substudy: B

Client: **TRANSPORT SCOTLAND**
COMHDHAIL ALBA

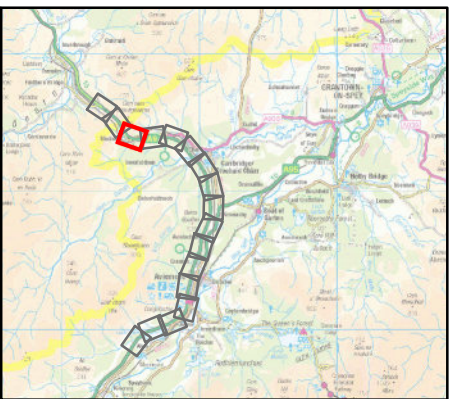
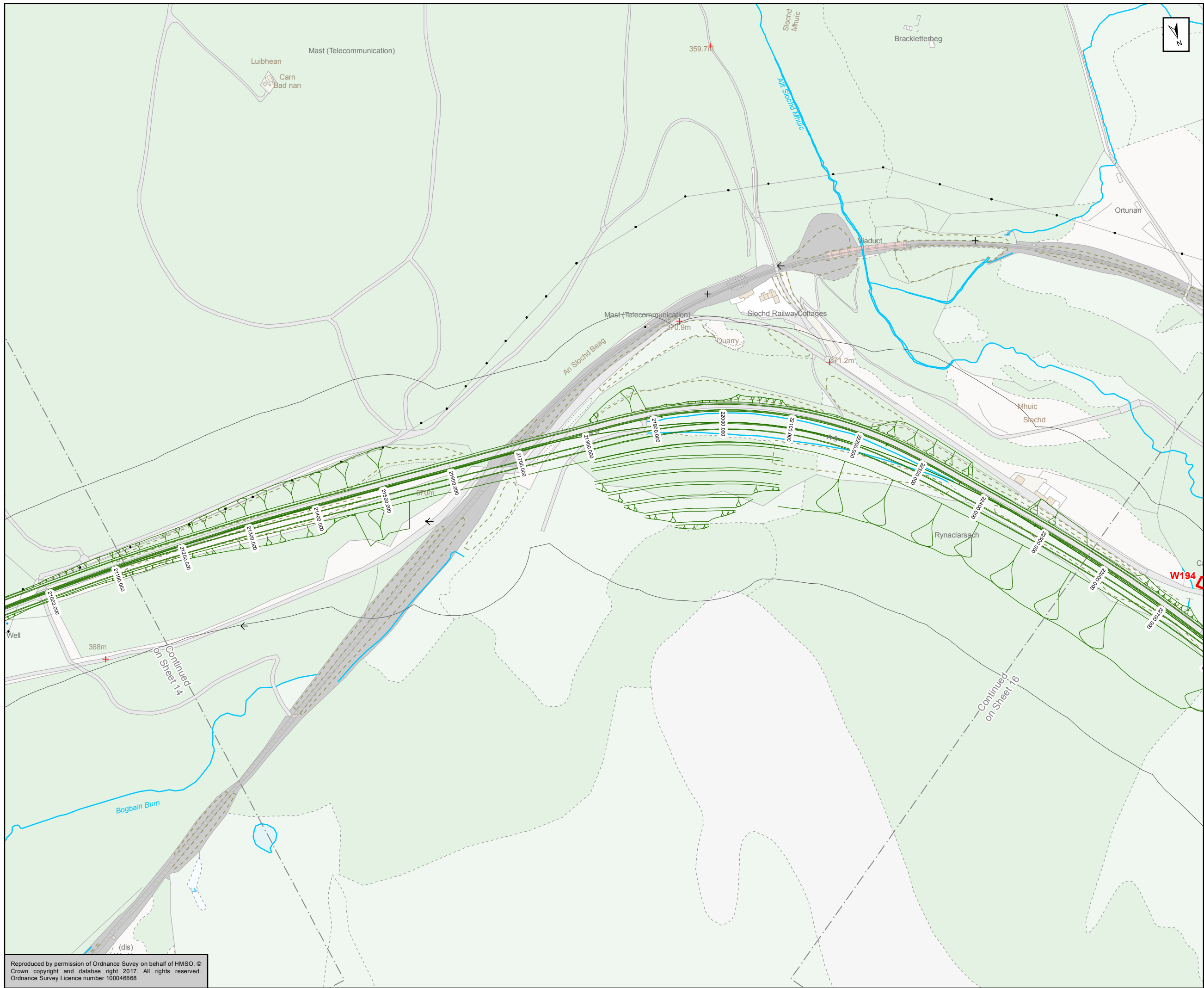


ATKINS mouchel

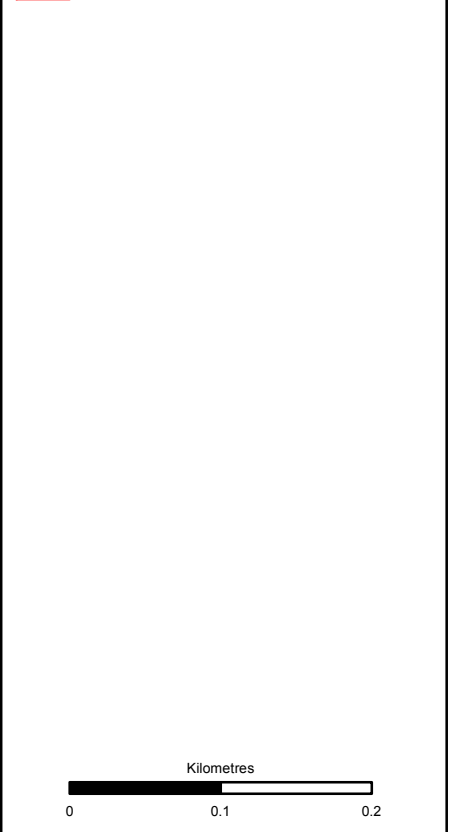
Title: **Figure 11.6a (2)**
Bats Habitat/ Roost Assessment -
Woodland and Trees
and Crossing Points
Sheet 14 of 17

Scale: 1:5,000	Drawn: MM	Checked: SK	Approved: ROB	Authorised: SB
Document Number	Project: A9P11-AMJ-EBD-F_ZZZZZ_XX-DR-GI-0069	Originator	Volume	Revision: P03
Location	Type	Role	Number	

Reproduced by permission of Ordnance Survey on behalf of HMSO. © Crown copyright and database right 2017. All rights reserved. Ordnance Survey Licence number 100046668



Mainline Option 2 (Combination of Northbound and Southbound Widening)
 50m Study Area
Woodland blocks with Bat Roost Potential (W)
 High



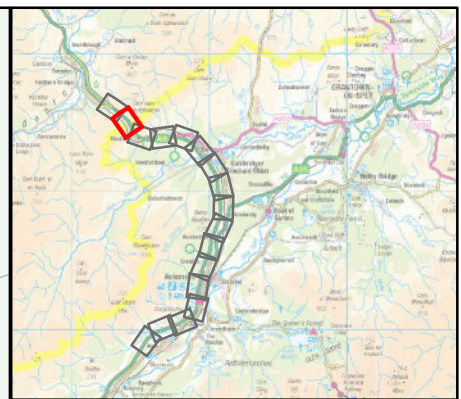
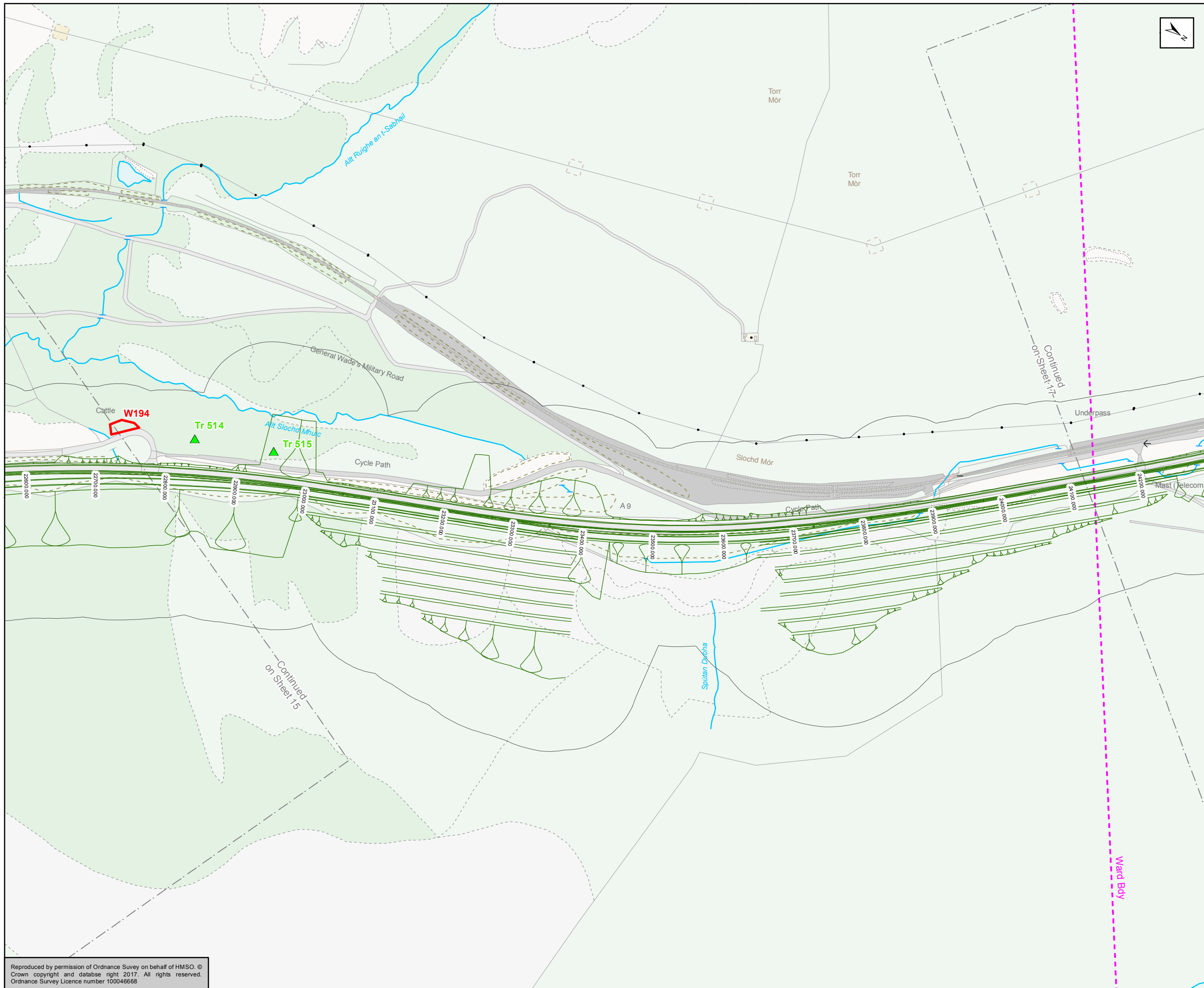
Status: FINAL
 Substudy: B



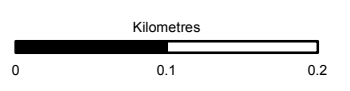
Title: Figure 11.6a (2)
 Bats Habitat/ Roost Assessment -
 Woodland and Trees
 and Crossing Points
 Sheet 15 of 17

Scale	1:5,000	Drawn	MM	Checked	SK	Approved	ROB	Authorised	SB	
Document Number	A9P11-AMJ-EBD-F_ZZZZZ_XX-DR-GI-0070								Revision	P03
Project	Originator	Volume								
Location	Type	Role	Number							

Reproduced by permission of Ordnance Survey on behalf of HMSO. ©
 Crown copyright and database right 2017. All rights reserved.
 Ordnance Survey Licence number 100046668



- Mainline Option 2 (Combination of Northbound and Southbound Widening)
- 50m Study Area
- Trees with Bat Roost Potential (Tr)**
- Moderate
- Woodland blocks with Bat Roost Potential (W)**
- High



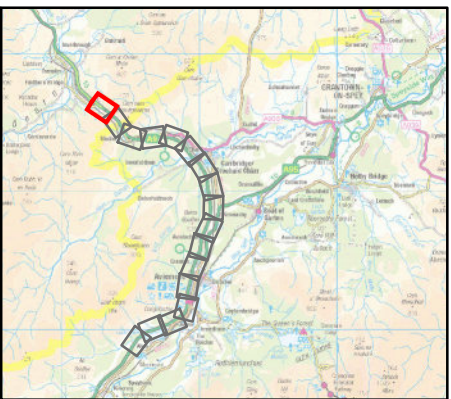
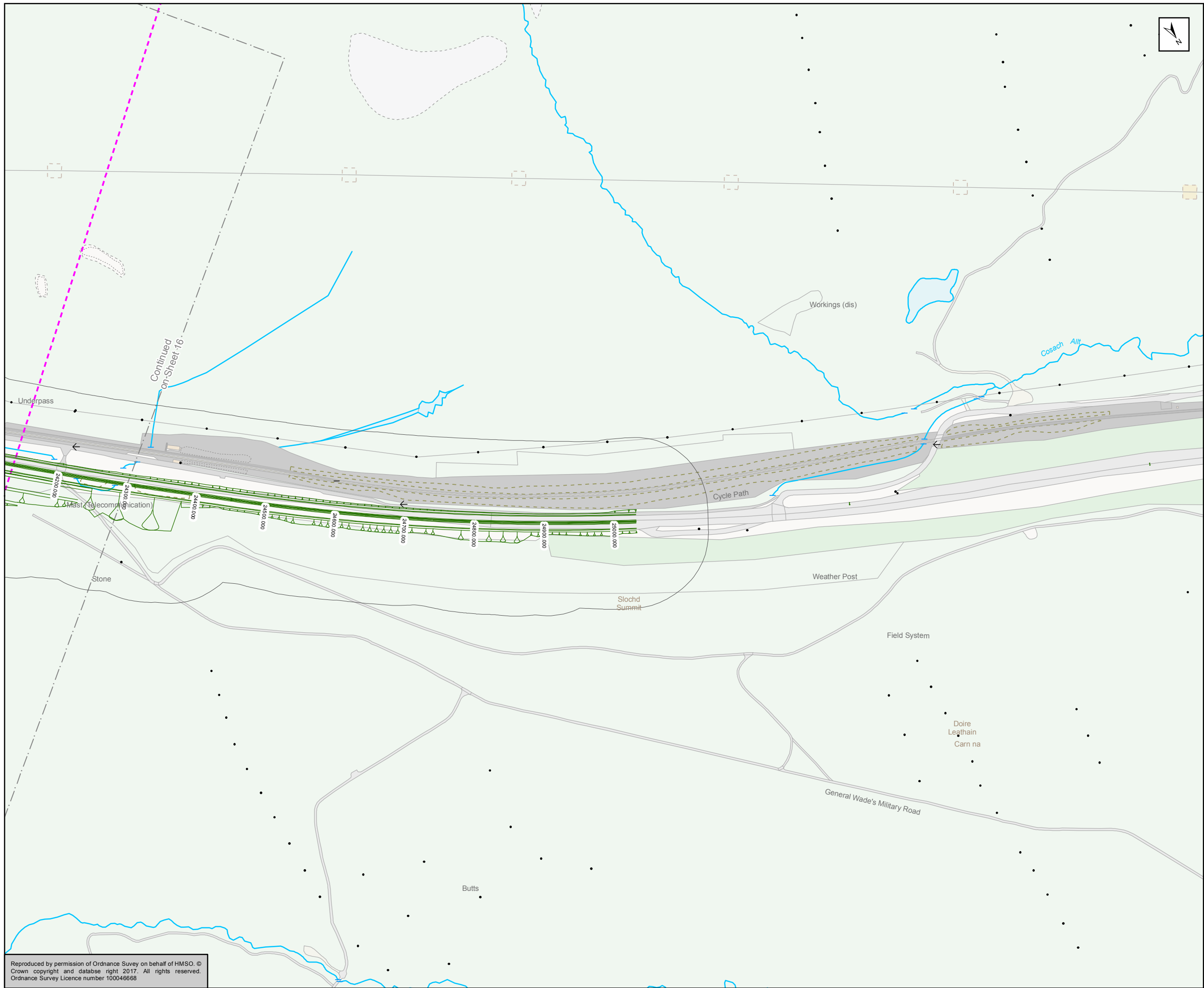
Status	FINAL	Subsidiary	B
--------	-------	------------	---



Title
Figure 11.6a (2)
Bats Habitat/ Roost Assessment -
Woodland and Trees
and Crossing Points
Sheet 16 of 17

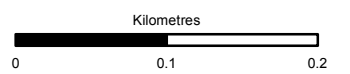
Scale	1:5,000	Drawn	MM	Checked	SK	Approved	ROB	Authorised	SB	
Document Number	A9P11-AMJ-EBD-F_ZZZZZ_XX-DR-GI-0071								Revision	P03

Reproduced by permission of Ordnance Survey on behalf of HMSO. © Crown copyright and database right 2017. All rights reserved. Ordnance Survey Licence number 100046668



Mainline Option 2 (Combination of Northbound and Southbound Widening)

50m Study Area



Status: FINAL Substudy: B

Client: **TRANSPORT SCOTLAND**
COMHDHAIL ALBA



ATKINS mouchel

Title: Figure 11.6a (2)
Bats Habitat/ Roost Assessment -
Woodland and Trees
and Crossing Points
Sheet 17 of 17

Scale: 1:5,000	Drawn: MM	Checked: SK	Approved: ROB	Authorised: SB
Document Number	Project: A9P11-AMJ-EBD-F_ZZZZZ_XX-DR-GI-0072	Originator	Volume	Revision: P03
Location	Type	Role	Number	

Reproduced by permission of Ordnance Survey on behalf of HMSO. © Crown copyright and database right 2017. All rights reserved. Ordnance Survey Licence number 100046668