

## Appendix B

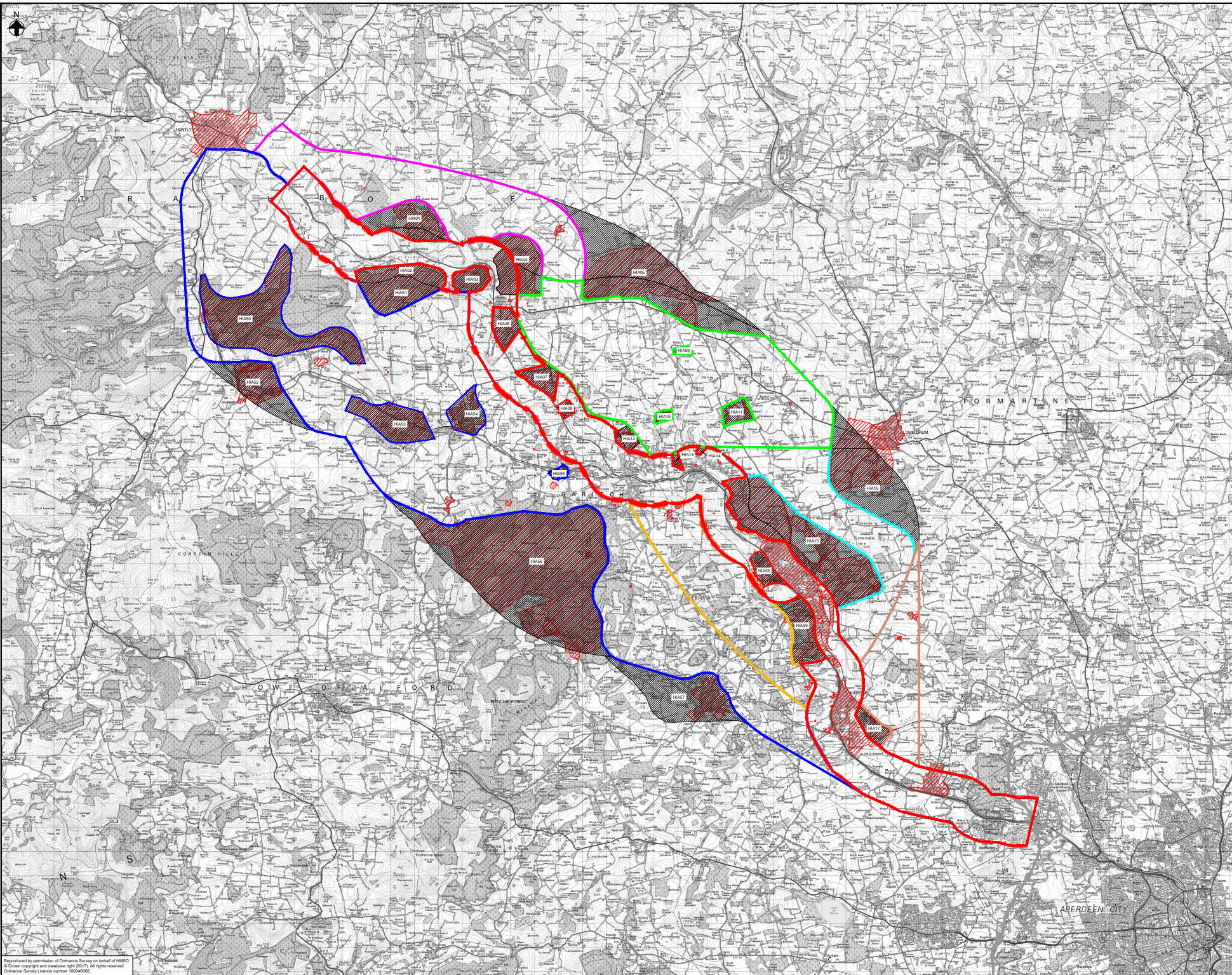
### High Impact Constraints and Areas

## A96 Corridor Options Determination - High Impact Constraint Criteria

<b>Significant (Major)</b> - Areas which are unfeasible or would have such an unacceptable impact that they will be avoided in the first instance when developing corridors. However consideration may need to be given to options which impact on them, if there is no better alternative.	<b>Serious</b> - Areas which would have an impact of lesser significance, which should be avoided if possible. Serious areas will increase project cost and/or project risk
---	---

High Impact Constraint	Why is it a high impact constraint?	Significant / Serious	How is it defined?
Scheduled Monuments	National Designation Major impact on sites with cultural heritage value. Unacceptable environmental impact.	Significant	Recorded extent - GIS
Gardens and Designed Landscapes	National Designation Unacceptable environmental impact.	Significant	Recorded extent - GIS
Historic Battlefields	National Designation Major impact on sites with cultural heritage value. Unacceptable environmental impact.	Significant	Recorded extent - GIS
Grade A Listed Buildings	National Designation Major impact on sites with cultural heritage value. Unacceptable environmental impact.	Significant	GIS point marker plus 50m buffer
Sites of Special Scientific Interest (Geological & Biological)	National Designation Unacceptable environmental impact.	Significant	Recorded extent
Existing and proposed settlements, and areas through LDP allocations including but not limited to industrial /commercial/employment allocations and residential allocations, protected areas/reserved land	Adverse impact upon local communities and proposed development areas is undesirable. Such impact is not compatible with scheme objectives	Significant	Existing settlements as defined in LDP and LDP zoned areas - GIS data
Topography - Significant	Disproportionate engineering works would be required to route an alignment across area Extensive slopes in excess of 25% (1:4) High ground areas - including plateau areas where there are significant elevation differences to surrounding ground In these areas tunnels would be preferred alignment solution which would have disproportionately high capital and operation costs and can impact have significant environmental impacts e.g. on groundwater	Significant	Extent determined by AmeyArup engineers. Record of defined areas made.
Graveyards / Cemeteries	Low public acceptability Significant cost to provide new facility and move and reinter remains. It also represents a programme risk to the approvals and construction. Biological contamination risk from historic graveyards	Significant	ACC GIS information plus secondary Arup review of mapping
Topography - Serious	Extensive slopes in excess of 15% Adjacent large areas of slopes in excess of 10% Large earthworks or structures required to achieve compliant geometry.	Serious	Extent determined by AmeyArup engineers. Record of defined areas made.
Strategic water/wastewater related non linear infrastructure	Relocation of this apparatus would be disruptive and expensive. Water supply and treatment apparatus has limited options for relocation, increasing project risk	Serious	Reservoirs, Sewage Treatment and Water treatment works. GIS record and mapping review. Utility records awaited
Strategic Utilities - Electricity related non linear infrastructure	Relocation of this apparatus would be disruptive and expensive.	Serious	Electricity - Primary substations, power generation, Pylon footprints. GIS record and mapping review. Utility records awaited
Wind Farms	Potentially costly to remove existing or consented turbines Contrary to planning guidance	Serious	Major Wind Farms. GIS record and mapping review. Utility records awaited
Strategic Utilities - Gas related non linear infrastructure	Relocation of this apparatus would be disruptive and expensive.	Serious	Gas - pumping stations, transfer stations - Surface plant only. Not pipelines since these can be diverted or crossed and protected. GIS record and mapping review. Utility records awaited
Telecommunications	Relocation of this apparatus would be disruptive and expensive. Strategic telecommunications masts rely on line of sight and impact could be very difficult to mitigate.	Serious	Telecommunications - Strategic Mast positions only. GIS record and mapping review. Utility records awaited
Other Civic Amenity designations	Relocation of such operational facilities would be disruptive and expensive.	Serious	Active landfill, waste disposal facility





- NOTES**
- Improvement strategies are those identified by the Stage 1 Preliminary Engineering Assessment.
  - Strategies Bc and Dc are additional improvement strategies identified for consideration.
  - High Impact Areas represent the High Impact constraints which are deemed infeasible to a new A96 Route Corridor. Refer to spreadsheet '2018.01.15 A96 High Impact Area' for the commentary associated with each High Impact Area.

- LEGEND**
- Improvement Strategy B Corridor
  - Strategy B - Inverurie North Corridor
  - Strategy B - Inverurie North Corridor
  - Strategy B - Inverurie South Corridor
  - Strategy C Corridor
  - Strategy D Corridor
  - Strategy D Corridor
  - High Impact Area
  - High Impact Constraint

P01	Fit for Stage Approval	DATE	JOB	DATE	DATE	DATE
		18/01/18	18/01/18	18/01/18	18/01/18	18/01/18

Revision	Created	Checked	Reviewed	Approved	Authorised

Designer:  
Precision House  
McNeil Drive  
Motherwell  
ML1 4UR  
Scotland



Client:  
58 Port Dundas Road  
Glasgow  
G4 0HF



Project Name:  
**A96 Dualling: East of Huntly to Aberdeen**

Drawing Title:  
**The High Impact Areas**

Drawing Number	Project	Originator	Volume
A96PEA - AMAR - GEN - SWI	-DR - ZZ - 000003		
Location	Type	Role	Number

Subsidiary	Subsidiary Description	Revision
S4	Fit for Stage Approval	P01

Reproduced by permission of Ordnance Survey on behalf of HMEO.  
© Crown copyright and database right (2017). All rights reserved.  
Ordnance Survey Licence number: 100049666



## High Impact Areas

High Impact Area Ref.	Corridor Area	High Impact Constraint	Justification for High Impact Area
HIA01	Option D+ Option B	Serious Constraint - Topographical constraint identified at the Hill of Bainshole and its approach slopes Serious constraint - Bainshole Windfarm	The combination of the serious topographical and windfarm constraints result in this area being excluded from the corridor. The extent of the excluded area has been extended to reflect a feasible route for a geometrically compliant Option B or Option D+ Corridor.
HIA02	Option B	Significant Constraint - Topographical constraint identified at the Hill of Foudland and its approach slopes	The significant topographical constraint result in this area being excluded from the corridor.
HIA03	Option B	Significant Constraint - Topographical constraint identified at the Hill of Skares and its approach slopes	The significant topographical constraint result in this area being excluded from the corridor.
HIA04	Option D+ Option B	Significant Constraint - Topographical constraint identified at the Hill of Tillymorgan and its approach slopes	The significant topographical constraint result in this area being excluded from the corridor. The extent of the excluded area has been extended to reflect a feasible route for a geometrically compliant Option D+ Corridor.
HIA05	Option D Option D+	Significant Constraint - Topographical constraint identified at the Hill of Rothmasie and Hill of Blackford and their approach slopes. Significant Constraint - Wartle Moss Geological SSSI Significant Constraint - Scheduled Monument (Black Cairn)	The significant topographical constraints and Scheduled Monument result in this area being excluded from the corridor. The Geological SSSI has also been included within the exclude area which has been extended to reflect a feasible route for a geometrically compliant Option D+ Corridor.
HIA06	Option B Option D	Significant Constraint - Williamston House GDL	The significant constraint associated with the GDL result in this area being excluded from the corridor.
HIA07	Option B	Significant Constraint - Newton House GDL	The significant constraint associated with the GDL result in this area being excluded from the corridor.
HIA08	Option B	Significant Constraint - Settlement of Old Rayne	The significant constraint associated with the settlement at Old Rayne result in this area being excluded from the corridor.
HIA09	Option D	Significant Constraint - Settlement of Meikle Wartle	The significant constraint associated with the settlement at Meikle Wartle result in this area being excluded from the corridor.
HIA10	Option D	Significant Constraint - Settlement of Durno	The significant constraint associated with the settlement at Durno result in this area being excluded from the corridor.
HIA11	Option D	Significant Constraint - Settlement of Daviot Serious Constraint - Reserved Land associated with Conservation of Daviot	The significant constraint associated with the settlement at Daviot and the reserved land for conservation result in this area being excluded from the corridor.
HIA12	Option B Option D	Significant Constraint - Scheduled Monument (Roman Camp at Durno)	The significant constraint associated with the scheduled monument result in this area being excluded from the corridor.
HIA13	Option B	Significant Constraint - Settlement of Whiteford	The significant constraint associated with the settlement at Whiteford result in this area being excluded from the corridor.
HIA14	Option B	Significant Constraint - Pitcaple and Legatsden Geological SSSI	The significant constraint associated with the Geological SSSI result in this area being excluded from the corridor.
HIA15	Option B Option B Inv North	Significant Constraint - Settlement of Inverurie Significant Constraint - Settlement of Keithhall Significant Constraint - Harlow Battlefield Significant Constraint - Keith Hall GDL, Listed Building and Scheduled Monuments	The significant constraints associated with the settlements at Inverurie and Keithhall, Harlow Battlefield and Keith Hall GDL result in this area being excluded from the corridor. The extent of the excluded area has been extended to reflect a feasible route for a geometrically compliant Option B or Option B North Corridor.
HIA16	Option B Inv North Option D	Significant Constraint - Settlement of Oldmeldrum Significant Constraint - Barra Battlefield Significant Constraint - Scheduled Monuments (Hill of Barra Fort, Kirkton of Bourtie Stone Circle) Significant Constraint - Hill of Barra Geological SSSI Significant Constraint - Grade A Listed Buildings (Bourtie Parish Church and Barra Castle) Serious Constraint - Topographical constraint identified at the Hill of Barra and Lawel Hill	The significant constraints associated with the settlement at Old Meldrum, Barra Battlefield, Scheduled Monuments and Listed Buildings result in this area being excluded from the corridor. The extent of the excluded area has been extended to reflect a feasible route for a geometrically compliant Option D or Option B North Corridor.
HIA17	Option B+ Inv North	Significant Constraint - Settlement of Kintore	The significant constraint associated with the settlement at Kintore result in this area being excluded from the corridor. The extent of the excluded area has been extended to reflect a feasible route for a geometrically compliant Option B+ North Corridor.
HIA50	Option C	Significant constraint - Topographical constraint identified to the North of Warehouse and Slack	The significant topographical constraint result in this area being excluded from the corridor.



HIA51	Option C	Significant Constraint - Topographical constraint identified at the Hill of Foudland and its approach slopes	The significant topographical constraint result in this area being excluded from the corridor.
HIA52	Option C	Significant constraint - Keith Hall GDL and various listed buildings/scheduled monuments	The significant constraint associated with the GDL result in this area being excluded from the corridor.
HIA53	Option C	Significant constraint - topographical constraint and Dunideer castle	The significant topographical constraint and listed building results in this area being excluded from the corridor.
HIA54	Option C	Significant constraint - Settlement of Insch	The significant constraint associated with the settlement at Insch result in this area being excluded from the corridor. The extent of the excluded area has been extended to reflect a feasible route for a geometrically compliant Option C Corridor.
HIA55	Option C	Significant constraint - Settlement of Oyne	The significant constraint associated with the settlement at Oyne result in this area being excluded from the corridor. The extent of the excluded area has been extended to reflect a feasible route for a geometrically compliant Option C Corridor.
HIA56	Option C	Significant Constraint - Topographical constraint identified as Bennachie and it's approach slopes	The significant topographical constraint results in this area being excluded from the corridor
HIA57	Option C	Significant constraint - Settlement of Kemnay and Dalmadilly Quarry	The significant constraint associated with the settlement at Kenmay result in this area being excluded from the corridor. The extent of the excluded area has been extended to reflect a feasible route for a geometrically compliant Option B South Corridor.
HIA58	Option B	Significant constraint - Settlement of Inverurie including area designated for future property development	The significant constraint associated with the settlement at Inverurie result in this area being excluded from the corridor. The extent of the excluded area has been extended to reflect a feasible route for a geometrically compliant Option C Corridor.
HIA59	Option B	Significant constraint - Settlement of Port Elphinstone designated for future property development	The significant constraint associated with the settlement at Port Elphinstone result in this area being excluded from the corridor. The extent of the excluded area has been extended to reflect a feasible route for a geometrically compliant Option C Corridor.