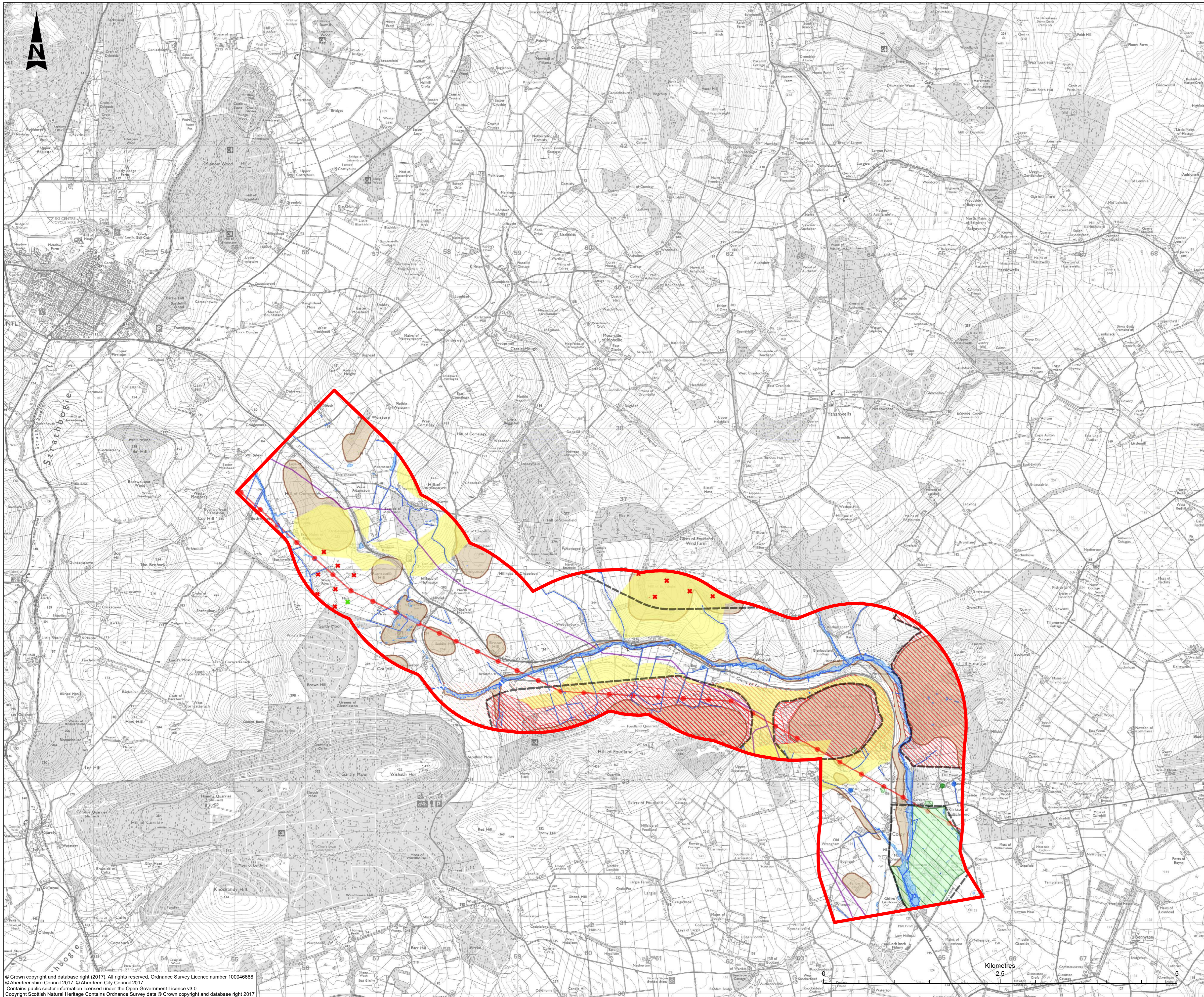


## Appendix C

### Constraints Maps





**RESIDUAL DESIGN HAZARDS**  
 (The following information has been collected from Preconstruction Information and the AmeyArup CDM Hazard Management Process.)

**LEGEND**

- High Impact Areas**
- High Impact Areas
- Environment and Social High Impact Constraints**
- Existing Settlements, Grade A Listed Buildings, Historic Battlefields, Sites of Special Scientific Interest, Scheduled Monuments, Gardens and Designed Landscapes, Burial Grounds and Cemeteries
- Engineering Constraints**
- Potential Geotechnical Constraints
- Oil and Gas Pipelines and Surface Plant
- Electricity Transmission and Substations
- Existing Wind Turbines
- Water and Sewage Apparatus
- Telecommunications Apparatus
- Telecommunication Masts
- Watercourses
- Fluvial Flooding (200 Year Return Period, 2014)
- Railway
- Topography - Serious
- Topography - Significant

Corridor Options Workshop	EB	RO	FM	GW	AF
	01/02/18	08/02/18	08/02/18	08/02/18	08/02/18

Revision details				
Created	Checked	Reviewed	Approved	Authorised
dd/mm/yy	dd/mm/yy	dd/mm/yy	dd/mm/yy	dd/mm/yy

Designer  
 Precision House  
 McNell Drive  
 Motherwell  
 ML1 4UR



Client  
 58 Port Dundas Road  
 Glasgow  
 G4 0HF



Project Name  
**A96 Dualling: East of Huntly to Aberdeen**

Drawing Title  
**Corridor Options Appraisal OLN - Online North**

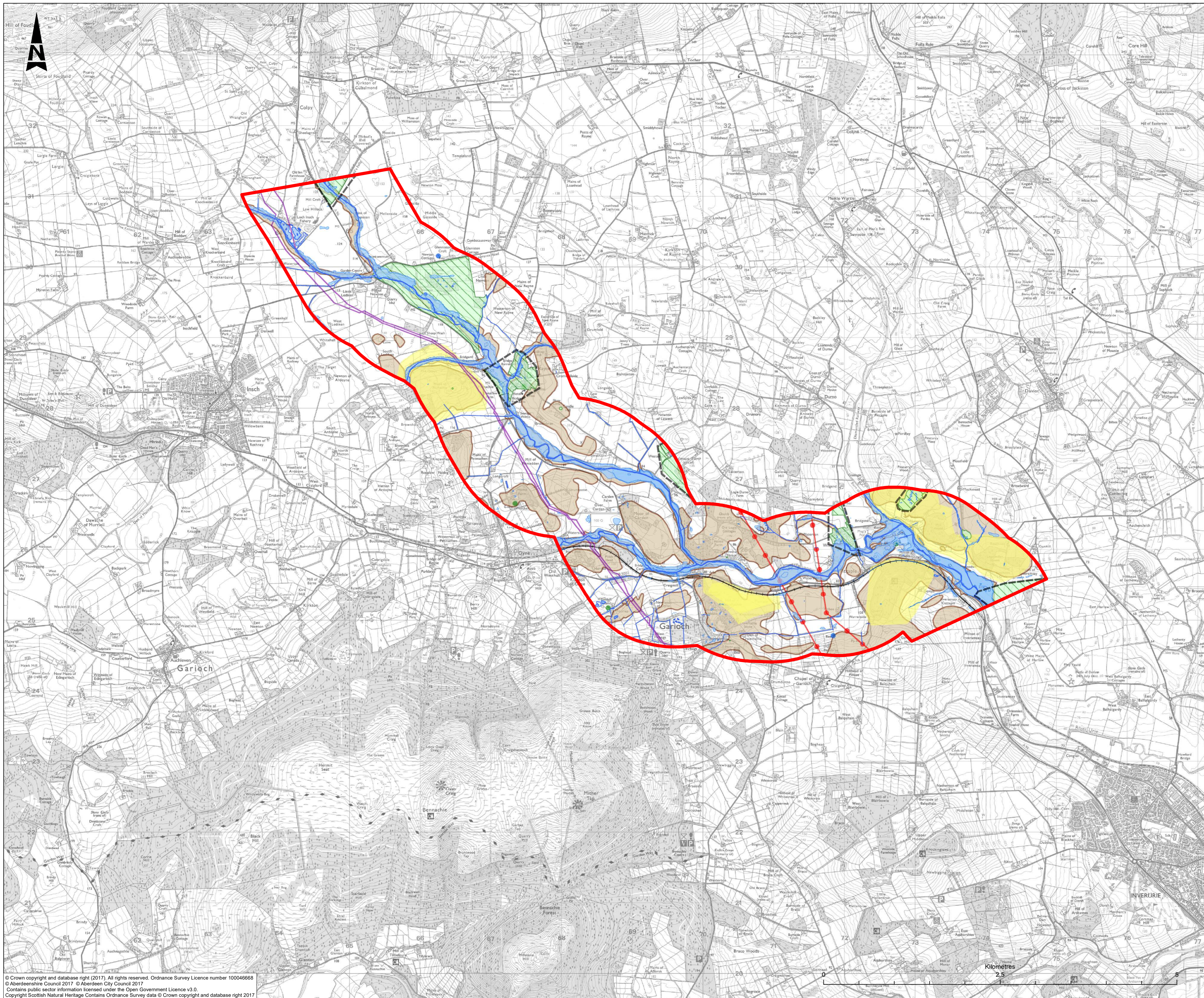
Project Ref. No	Stage	Scale	@A1
250002-92	Stage 2	1:25,000	
Dimensions :			

Drawing Number	Project	Originator	Volume
A96PEA - AMAR - HGN - SWI			
Location	Type	Role	Number

Suitability	Suitability Description	Revision
S4	Fit for Stage Approval	P01

© Crown copyright and database right (2017). All rights reserved. Ordnance Survey Licence number 100046668  
 © Aberdeenshire Council 2017 © Aberdeen City Council 2017  
 Contains public sector information licensed under the Open Government Licence v3.0.  
 Copyright Scottish Natural Heritage Contains Ordnance Survey data © Crown copyright and database right 2017





**RESIDUAL DESIGN HAZARDS**  
 (The following information has been collected from Preconstruction Information and the AmeyArup CDM Hazard Management Process.)

- LEGEND**
- High Impact Areas**
    - High Impact Areas
  - Environment and Social High Impact Constraints**
    - Existing Settlements, Grade A Listed Buildings, Historic Battlefields, Sites of Special Scientific Interest, Scheduled Monuments, Gardens and Designed Landscapes, Burial Grounds and Cemeteries
  - Engineering Constraints**
    - Potential Geotechnical Constraints
    - Oil and Gas Pipelines and Surface Plant
    - Electricity Transmission and Substations
    - Existing Wind Turbines
    - Water and Sewage Apparatus
    - Telecommunications Apparatus
    - Telecommunication Masts
    - Watercourses
    - Fluvial Flooding (200 Year Return Period, 2014)
    - Railway
    - Topography - Serious
    - Topography - Significant

P01	Corridor Options Workshop				
	EB	RO	FM	GW	AF
	01/02/18	08/02/18	08/02/18	08/02/18	08/02/18
Revision	Revision details				
	Created	Checked	Reviewed	Approved	Authorised
	dd/mm/yy	dd/mm/yy	dd/mm/yy	dd/mm/yy	dd/mm/yy

Designer  
 Precision House  
 McNeill Drive  
 Motherwell  
 ML1 4UR



Client  
 58 Port Dundas Road  
 Glasgow  
 G4 0HF



Project Name  
**A96 Dualling: East of Huntly to Aberdeen**

Drawing Title  
**Corridor Options Appraisal OLC - Online Central**

Project Ref. No	Stage	Scale	@A1
250002-92	Stage 2	1:25,000	
		Dimensions	

Drawing Number	Project	Originator	Volume
A96PEA - AMAR - HGN - SWI			
	Location	Type	Role   Number

Suitability	Suitability Description	Revision
S4	Fit for Stage Approval	P01

© Crown copyright and database right (2017). All rights reserved. Ordnance Survey Licence number 100046668  
 © Aberdeenshire Council 2017 © Aberdeen City Council 2017  
 Contains public sector information licensed under the Open Government Licence v3.0.  
 Copyright Scottish Natural Heritage Contains Ordnance Survey data © Crown copyright and database right 2017