

RESIDUAL DESIGN HAZARDS
 (The following information has been collected from Preconstruction Information and the AmeyArup CDM Hazard Management Process.)

- LEGEND**
- High Impact Areas**
 - High Impact Areas
 - Environment and Social High Impact Constraints**
 - Existing Settlements, Grade A Listed Buildings, Historic Battlefields, Sites of Special Scientific Interest, Scheduled Monuments, Gardens and Designed Landscapes, Burial Grounds and Cemeteries
 - Engineering Constraints**
 - Potential Geotechnical Constraints
 - Oil and Gas Pipelines and Surface Plant
 - Electricity Transmission and Substations
 - Existing Wind Turbines
 - Water and Sewage Apparatus
 - Telecommunications Apparatus
 - Telecommunication Masts
 - Watercourses
 - Fluvial Flooding (200 Year Return Period, 2014)
 - Railway
 - Topography - Serious
 - Topography - Significant

P01	Corridor Options Workshop				
	EB	RO	FM	GW	AF
	01/02/18	08/02/18	08/02/18	08/02/18	08/02/18

Revision	Revision details				
	Created	Checked	Reviewed	Approved	Authorised
	dd/mm/yy	dd/mm/yy	dd/mm/yy	dd/mm/yy	dd/mm/yy

Designer
 Precision House
 McNeill Drive
 Motherwell
 ML1 4UR



Client
 58 Port Dundas Road
 Glasgow
 G4 0HF



Project Name
A96 Dualling: East of Huntly to Aberdeen

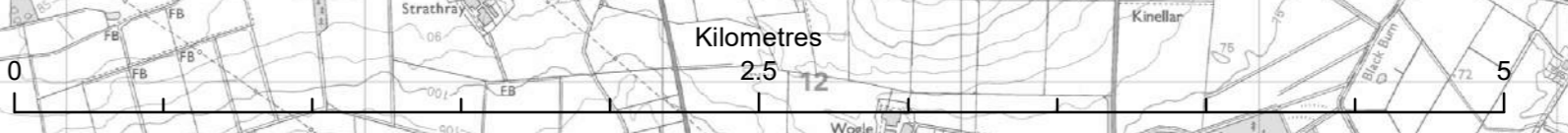
Drawing Title
Corridor Options Appraisal BS01 – B South

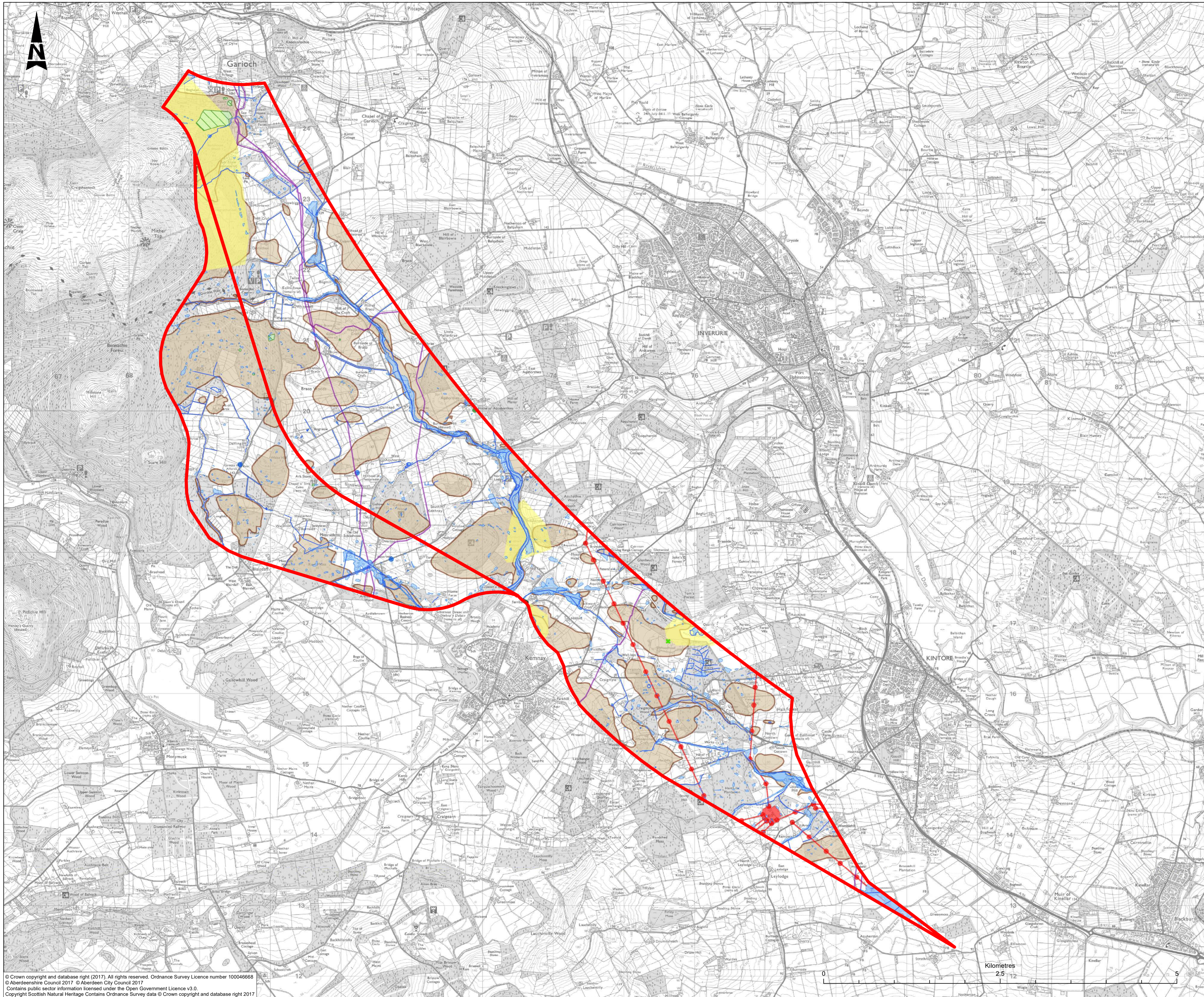
Project Ref. No	Stage	Scale	@A1
250002-92	Stage 2	1:25,000	
		Dimensions	

Drawing Number	Project	Originator	Volume
	A96PEA	-AMAR-	HGN-
	SWI	-DR-YX-	000007
	Location	Type	Role
			Number

Suitability	Suitability Description	Revision
S4	Fit for Stage Approval	P01

© Crown copyright and database right (2017). All rights reserved. Ordnance Survey Licence number 100046868
 © Aberdeenshire Council 2017 © Aberdeen City Council 2017
 Contains public sector information licensed under the Open Government Licence v3.0.
 Copyright Scottish Natural Heritage Contains Ordnance Survey data © Crown copyright and database right 2017





RESIDUAL DESIGN HAZARDS
 (The following information has been collected from Preconstruction Information and the AmeyArup CDM Hazard Management Process.)

- LEGEND**
- High Impact Areas**
 - High Impact Areas
 - Environment and Social High Impact Constraints**
 - Existing Settlements, Grade A Listed Buildings, Historic Battlefields, Sites of Special Scientific Interest, Scheduled Monuments, Gardens and Designed Landscapes, Burial Grounds and Cemeteries
 - Engineering Constraints**
 - Potential Geotechnical Constraints
 - Oil and Gas Pipelines and Surface Plant
 - Electricity Transmission and Substations
 - Existing Wind Turbines
 - Water and Sewage Apparatus
 - Telecommunications Apparatus
 - Telecommunication Masts
 - Watercourses
 - Fluvial Flooding (200 Year Return Period, 2014)
 - Railway
 - Topography - Serious
 - Topography - Significant

P01	Corridor Options Workshop				
	EB	RO	FM	GW	AF
	01/02/18	08/02/18	08/02/18	08/02/18	08/02/18

Revision	Revision details				
	Created	Checked	Reviewed	Approved	Authorised
	dd/mm/yy	dd/mm/yy	dd/mm/yy	dd/mm/yy	dd/mm/yy

Designer
 Precision House
 McNeill Drive
 Motherwell
 ML1 4UR



Client
 58 Port Dundas Road
 Glasgow
 G4 0HF



Project Name
A96 Dualling: East of Huntly to Aberdeen

Drawing Title
Corridor Options Appraisal CS01 & CS02

Project Ref. No	Stage	Scale	@A1
250002-92	Stage 2	1:25,000	
Dimensions :			

Drawing Number	Project	Originator	Volume
	A96PEA	-AMAR-	HGN-
	SWI	-DR-YX-	000008
	Location	Type	Role
			Number

Suitability	Suitability Description	Revision
S4	Fit for Stage Approval	P01

© Crown copyright and database right (2017). All rights reserved. Ordnance Survey Licence number 100046868
 © Aberdeenshire Council 2017 © Aberdeen City Council 2017
 Contains public sector information licensed under the Open Government Licence v3.0.
 Copyright Scottish Natural Heritage Contains Ordnance Survey data © Crown copyright and database right 2017

