

RESIDUAL DESIGN HAZARDS
 (The following information has been collected from Preconstruction Information and the AmeyArup CDM Hazard Management Process.)

LEGEND

- High Impact Areas**
 - High Impact Areas
- Environment and Social High Impact Constraints**
 - Existing Settlements, Grade A Listed Buildings, Historic Battlefields, Sites of Special Scientific Interest, Scheduled Monuments, Gardens and Designed Landscapes, Burial Grounds and Cemeteries
- Engineering Constraints**
 - Potential Geotechnical Constraints
 - Oil and Gas Pipelines and Surface Plant
 - Electricity Transmission and Substations
 - Existing Wind Turbines
 - Water and Sewage Apparatus
 - Telecommunications Apparatus
 - Telecommunication Masts
 - Watercourses
 - Fluvial Flooding (200 Year Return Period, 2014)
 - Railway
 - Topography - Serious
 - Topography - Significant

P01	Corridor Options Workshop				
	EB	RO	FM	GW	AF
	01/02/18	08/02/18	08/02/18	08/02/18	08/02/18

Revision	Revision details				
	Created	Checked	Reviewed	Approved	Authorised
	dd/mm/yy	dd/mm/yy	dd/mm/yy	dd/mm/yy	dd/mm/yy

Designer
 Precision House
 McNell Drive
 Motherwell
 ML1 4UR



Client
 58 Port Dundas Road
 Glasgow
 G4 0HF



Project Name
A96 Dualling: East of Huntly to Aberdeen

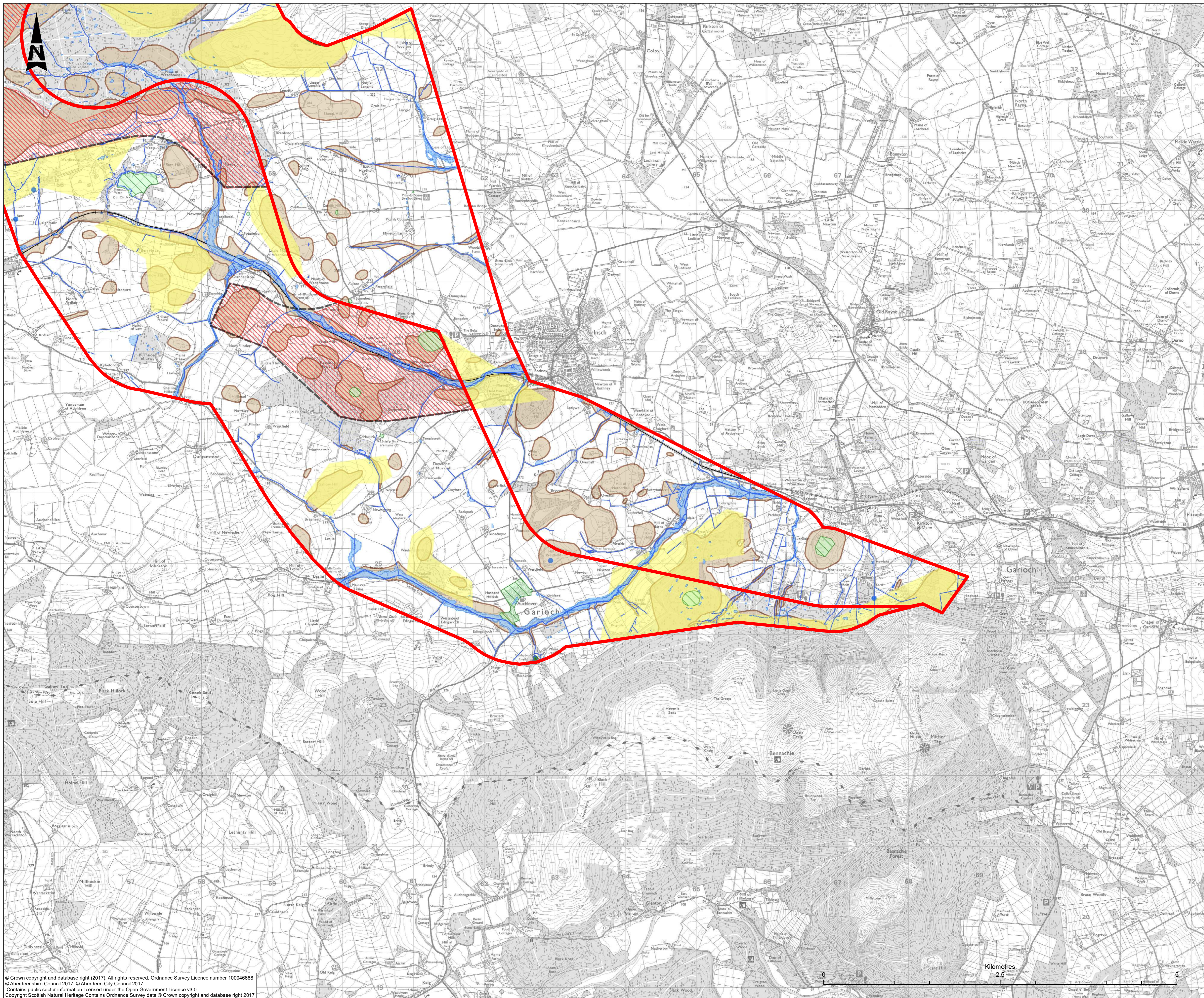
Drawing Title
Corridor Options Appraisal CN01 & CN02 (North)

Project Ref. No	Stage	Scale	@A1
250002-92	Stage 2	1:25,000	
		Dimensions	

Drawing Number	Project	Originator	Volume
A96PEA - AMAR - HGN - SWI			
Location	Type	Role	Number

Suitability	Suitability Description	Revision
S4	Fit for Stage Approval	P01

© Crown copyright and database right (2017). All rights reserved. Ordnance Survey Licence number 100046668
 © Aberdeenshire Council 2017 © Aberdeen City Council 2017
 Contains public sector information licensed under the Open Government Licence v3.0.
 Copyright Scottish Natural Heritage Contains Ordnance Survey data © Crown copyright and database right 2017



RESIDUAL DESIGN HAZARDS
 (The following information has been collected from Preconstruction Information and the AmeyArup CDM Hazard Management Process.)

LEGEND

- High Impact Areas**
 - High Impact Areas
- Environment and Social High Impact Constraints**
 - Existing Settlements, Grade A Listed Buildings, Historic Battlefields, Sites of Special Scientific Interest, Scheduled Monuments, Gardens and Designed Landscapes, Burial Grounds and Cemeteries
- Engineering Constraints**
 - Potential Geotechnical Constraints
 - Oil and Gas Pipelines and Surface Plant
 - Electricity Transmission and Substations
 - Existing Wind Turbines
 - Water and Sewage Apparatus
 - Telecommunications Apparatus
 - Telecommunication Masts
 - Watercourses
 - Fluvial Flooding (200 Year Return Period, 2014)
 - Railway
 - Topography - Serious
 - Topography - Significant


P01	Corridor Options Workshop				
	EB	RO	FM	GW	AF
	01/02/18	08/02/18	08/02/18	08/02/18	08/02/18

Revision	Revision details				
	Created	Checked	Reviewed	Approved	Authorised
	dd/mm/yy	dd/mm/yy	dd/mm/yy	dd/mm/yy	dd/mm/yy

Designer
 Precision House
 McNeill Drive
 Motherwell
 ML1 4UR



Client
 58 Port Dundas Road
 Glasgow
 G4 0HF



Project Name
A96 Dualling: East of Huntly to Aberdeen

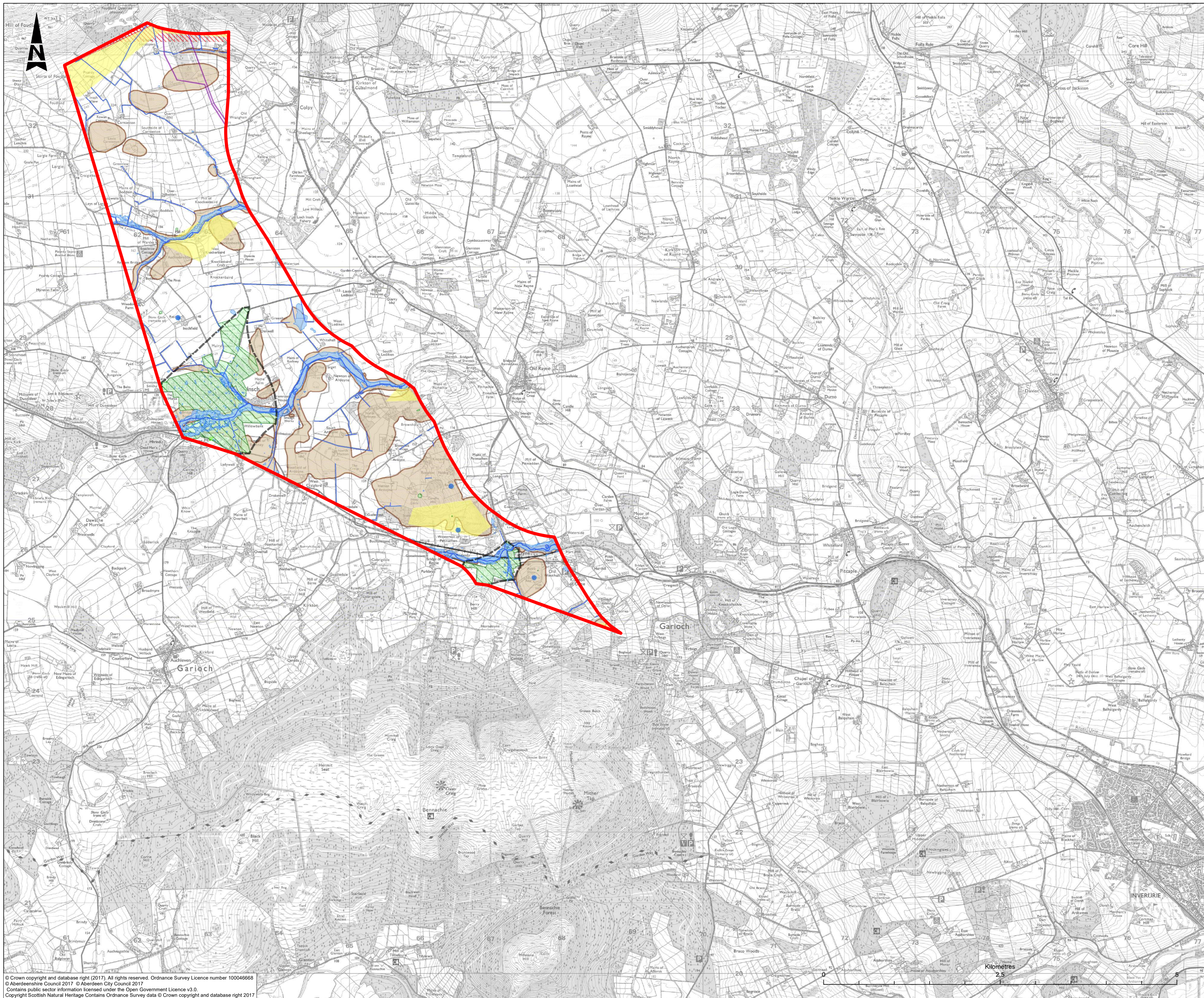
Drawing Title
Corridor Options Appraisal CN01 & CN02 (South)

Project Ref. No	Stage	Scale	@A1
250002-92	Stage 2	1:25,000	
		Dimensions	

Drawing Number	Project	Originator	Volume
A96PEA - AMAR - HGN - SWI			
Location	Type	Role	Number

Suitability	Suitability Description	Revision
S4	Fit for Stage Approval	P01

© Crown copyright and database right (2017). All rights reserved. Ordnance Survey Licence number 100046668
 © Aberdeenshire Council 2017 © Aberdeen City Council 2017
 Contains public sector information licensed under the Open Government Licence v3.0.
 Copyright Scottish Natural Heritage Contains Ordnance Survey data © Crown copyright and database right 2017



RESIDUAL DESIGN HAZARDS
 (The following information has been collected from Preconstruction Information and the AmeyArup CDM Hazard Management Process.)

- LEGEND**
- High Impact Areas**
 - High Impact Areas
 - Environment and Social High Impact Constraints**
 - Existing Settlements, Grade A Listed Buildings, Historic Battlefields, Sites of Special Scientific Interest, Scheduled Monuments, Gardens and Designed Landscapes, Burial Grounds and Cemeteries
 - Engineering Constraints**
 - Potential Geotechnical Constraints
 - Oil and Gas Pipelines and Surface Plant
 - Electricity Transmission and Substations
 - Existing Wind Turbines
 - Water and Sewage Apparatus
 - Telecommunications Apparatus
 - Telecommunication Masts
 - Watercourses
 - Fluvial Flooding (200 Year Return Period, 2014)
 - Railway
 - Topography - Serious
 - Topography - Significant

P01.01	Corridor Options Workshop				
	EB	RO	FM	GW	AF
	01/02/18	08/02/19	08/02/19	08/02/19	08/02/19
Revision	Revision details				
	Created	Checked	Reviewed	Approved	Authorised
	dd/mm/yy	dd/mm/yy	dd/mm/yy	dd/mm/yy	dd/mm/yy

Design
 Precision House
 McNeill Drive
 Motherwell
 ML1 4UR



Client
 58 Port Dundas Road
 Glasgow
 G4 0HF



Project Name
A96 Dualling: East of Huntly to Aberdeen

Drawing Title
Corridor Options Appraisal CN03

Project Ref. No	Stage	Scale	@A1
250002-92	Stage 2	1:25,000	
		Dimensions	

Drawing Number	Project	Originator	Volume
A96PEA - AMAR - HGN - SWI			
Location	Type	Role	Number

Suitability	Suitability Description	Revision
S4	Fit for Stage Approval	P01

© Crown copyright and database right (2017). All rights reserved. Ordnance Survey Licence number 100046668
 © Aberdeenshire Council 2017 © Aberdeen City Council 2017
 Contains public sector information licensed under the Open Government Licence v3.0.
 Copyright Scottish Natural Heritage Contains Ordnance Survey data © Crown copyright and database right 2017

