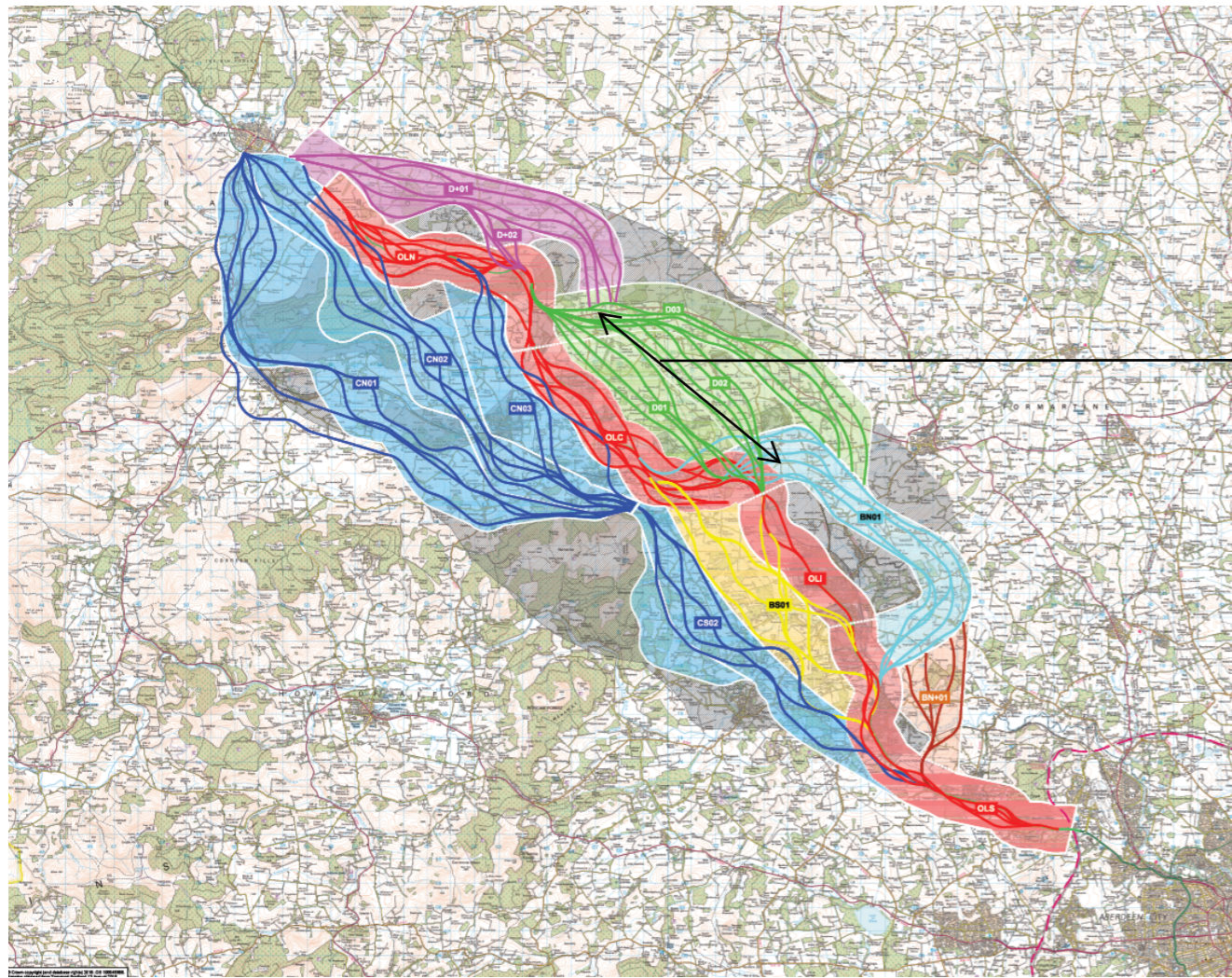


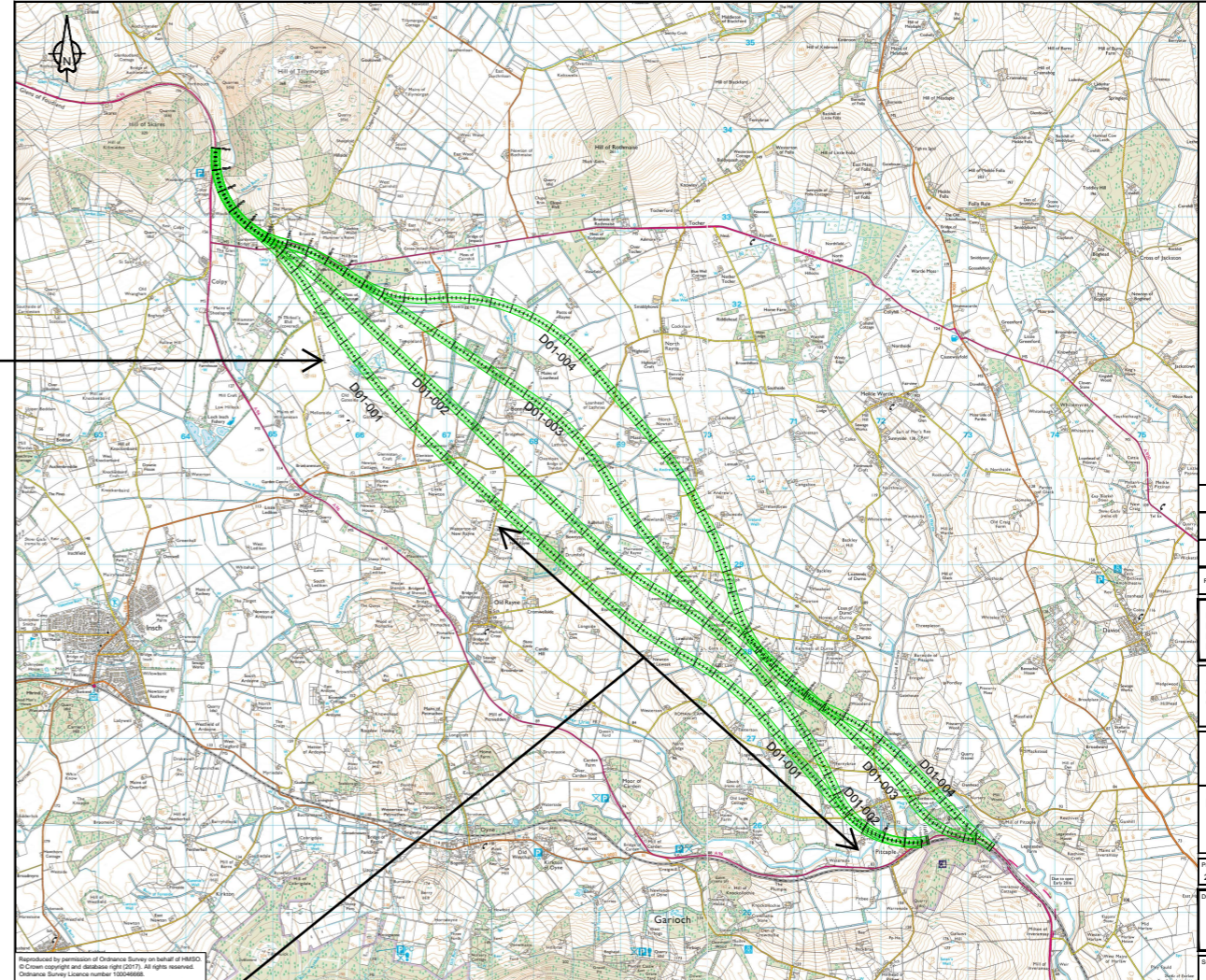
Appendix A

First Fix Alignments Plan and Profile Drawings

Note: The first fix alignments will be subject to further development as the scheme progresses as will the location and form of junctions. Connections to local accesses and Non-Motorised User routes will be developed following the identification of the preferred route option.

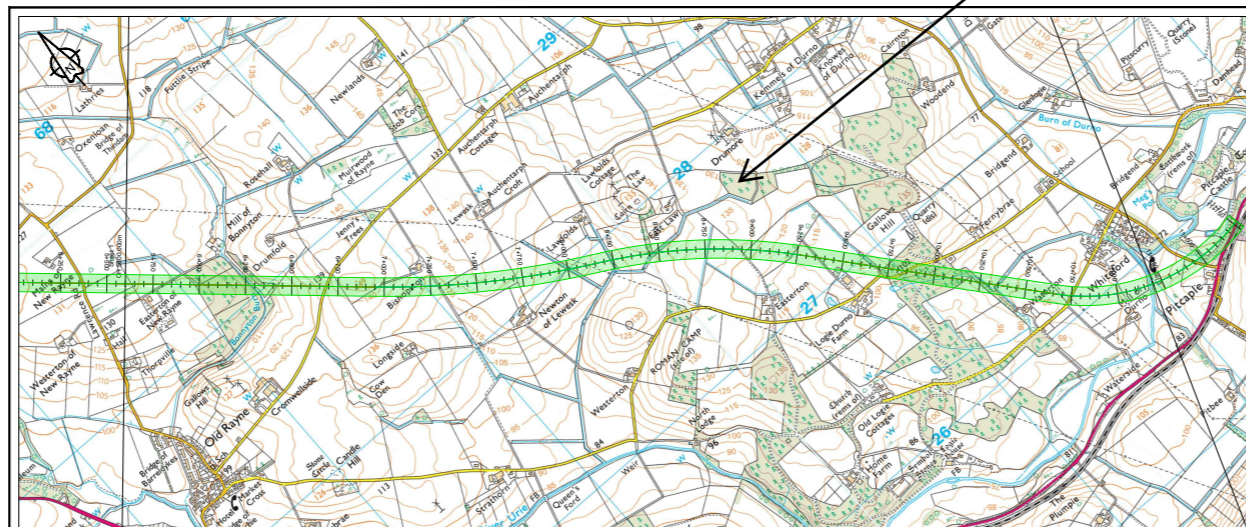


Combined First Fix Alignments



First Fix Alignments - Corridor option D01

Project Name	A96 Dualling East of Huntly to Aberdeen		
Client	58 Port Dundas Road, Glasgow, G4 0HF		
Design	Precision House, McNeil Drive, Motherwell, ML1 4UR	Amey	
Project Ref. No.	250002-02	Scale	1:2000
Revision	S2	Subsidiary Description	FF For Information

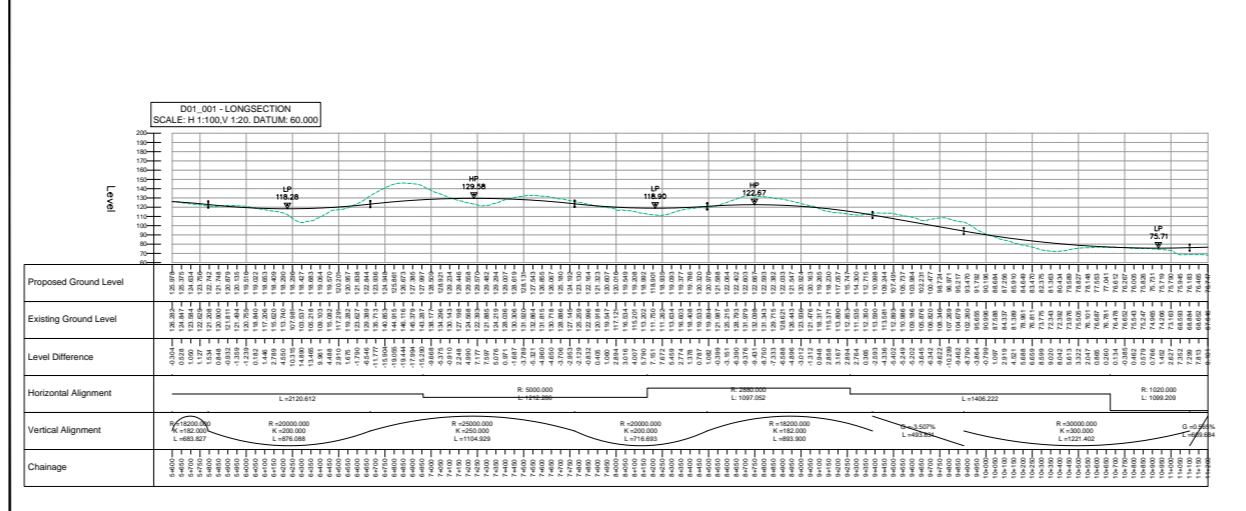


RESIDUAL DESIGN HAZARDS
 (The following information has been collected from Precipitation Information and the Amey A15 J12 CDM Hazard Management Plan.)

Please enter other specific hazards here.

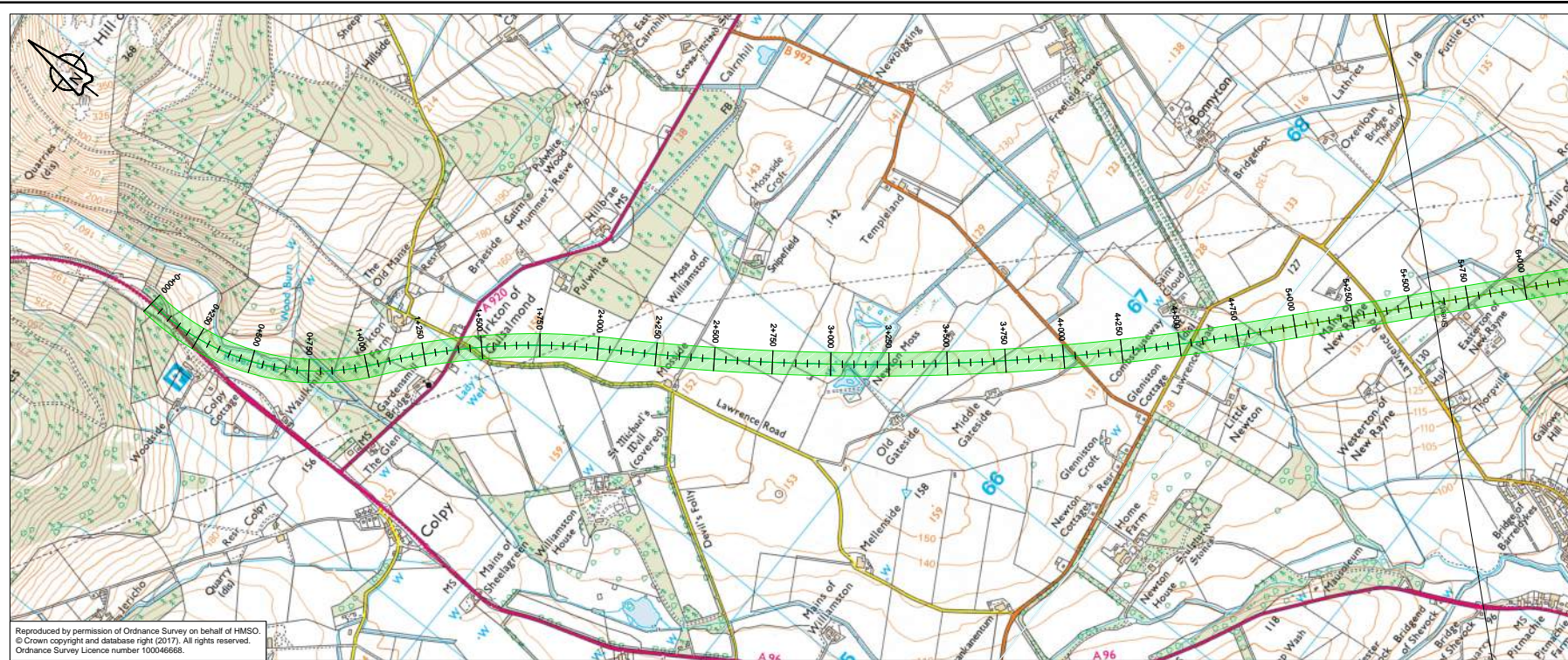
NOTES
 Please type your text here. Please type your text here. Please type your text here. Please type your text here. Please type your text here. Please type your text here. Please type your text here. Please type your text here. Please type your text here. Please type your text here. Please type your text here. Please type your text here. Please type your text here. Please type your text here. Please type your text here.

First Fix Alignment D01-001 Sheet 2 of 3



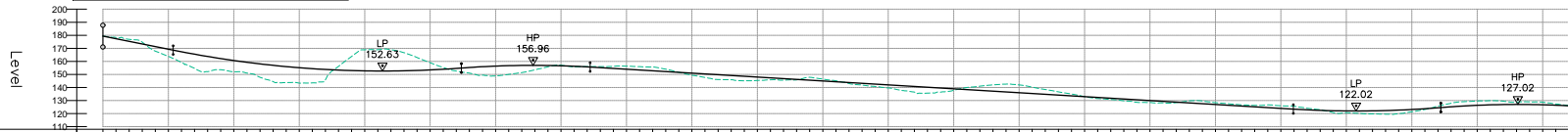
Project Name	A96 Dualling: East of Huntly to Aberdeen		
Client	58 Port Dundas Road, Glasgow, G4 0HF		
Design	Precision House, McNeil Drive, Motherwell, ML1 4UR	Amey	
Project Ref. No.	250002-02	Scale	1:2000
Revision	S2	Subsidiary Description	Work in Progress

First Fix Alignments To Plan And Profile Drawings Guide

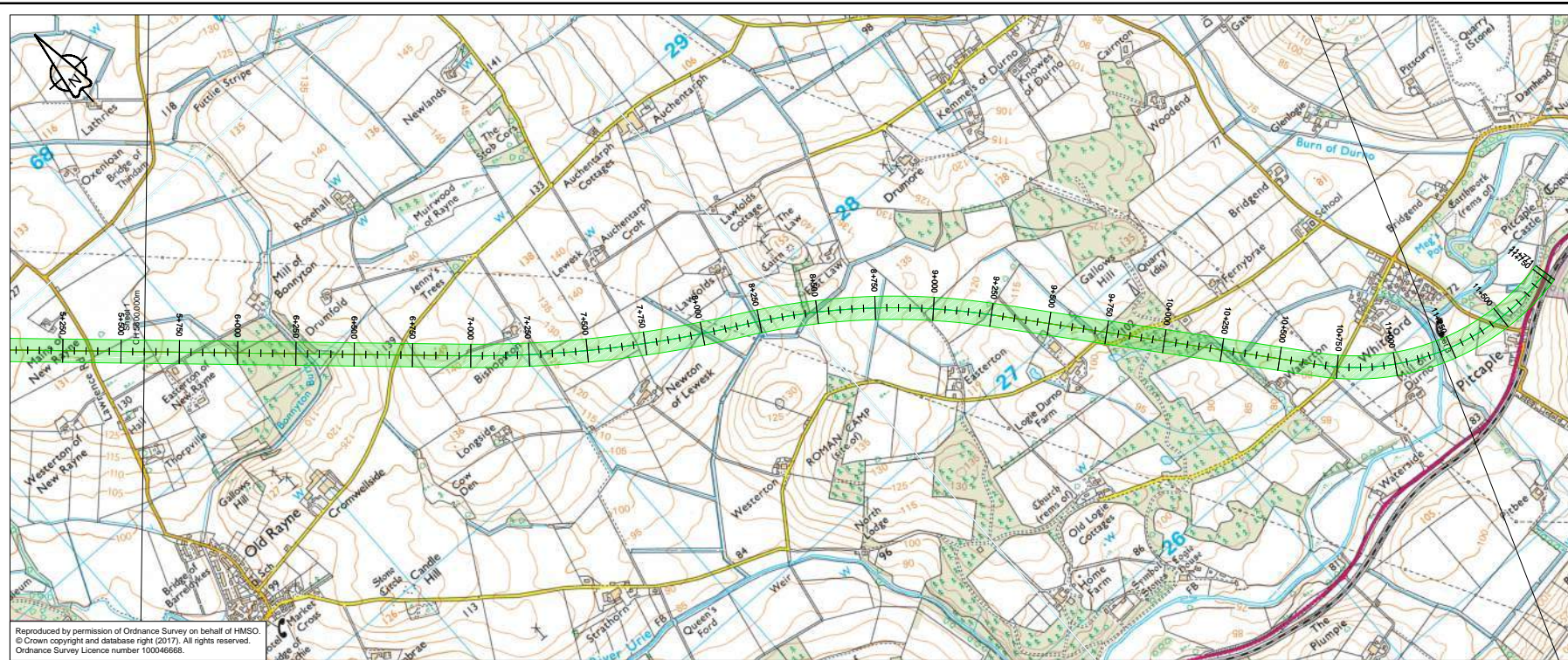


Reproduced by permission of Ordnance Survey on behalf of HMSO.
 © Crown copyright and database right (2017). All rights reserved.
 Ordnance Survey Licence number 100046668.

D01_001 - LONGSECTION
 SCALE: H 1:10000,V 1:2000. DATUM: 110.000

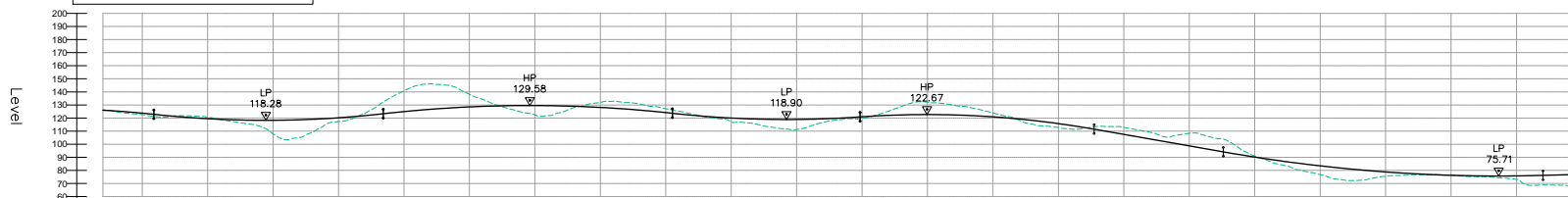


Proposed Ground Level	179.353 177.353 177.353 177.353 176.341 176.341 176.341 176.341 175.329 175.329 175.329 175.329 174.317 174.317 174.317 174.317 173.305 173.305 173.305 173.305 172.293 172.293 172.293 172.293 171.281 171.281 171.281 171.281 170.269 170.269 170.269 170.269 169.257 169.257 169.257 169.257 168.245 168.245 168.245 168.245 167.233 167.233 167.233 167.233 166.221 166.221 166.221 166.221 165.209 165.209 165.209 165.209 164.197 164.197 164.197 164.197 163.185 163.185 163.185 163.185 162.173 162.173 162.173 162.173 161.161 161.161 161.161 161.161 160.149 160.149 160.149 160.149 159.137 159.137 159.137 159.137 158.125 158.125 158.125 158.125 157.113 157.113 157.113 157.113 156.101 156.101 156.101 156.101 155.089 155.089 155.089 155.089 154.077 154.077 154.077 154.077 153.065 153.065 153.065 153.065 152.053 152.053 152.053 152.053 151.041 151.041 151.041 151.041 150.029 150.029 150.029 150.029 149.017 149.017 149.017 149.017 148.005 148.005 148.005 148.005 146.993 146.993 146.993 146.993 145.981 145.981 145.981 145.981 144.969 144.969 144.969 144.969 143.957 143.957 143.957 143.957 142.945 142.945 142.945 142.945 141.933 141.933 141.933 141.933 140.921 140.921 140.921 140.921 139.909 139.909 139.909 139.909 138.897 138.897 138.897 138.897 137.885 137.885 137.885 137.885 136.873 136.873 136.873 136.873 135.861 135.861 135.861 135.861 134.849 134.849 134.849 134.849 133.837 133.837 133.837 133.837 132.825 132.825 132.825 132.825 131.813 131.813 131.813 131.813 130.801 130.801 130.801 130.801 129.789 129.789 129.789 129.789 128.777 128.777 128.777 128.777 127.765 127.765 127.765 127.765 126.753 126.753 126.753 126.753 125.741 125.741 125.741 125.741 124.729 124.729 124.729 124.729 123.717 123.717 123.717 123.717 122.705 122.705 122.705 122.705 121.693 121.693 121.693 121.693 120.681 120.681 120.681 120.681 119.669 119.669 119.669 119.669 118.657 118.657 118.657 118.657 117.645 117.645 117.645 117.645 116.633 116.633 116.633 116.633 115.621 115.621 115.621 115.621 114.609 114.609 114.609 114.609 113.597 113.597 113.597 113.597 112.585 112.585 112.585 112.585 111.573 111.573 111.573 111.573 110.561 110.561 110.561 110.561 109.549 109.549 109.549 109.549 108.537 108.537 108.537 108.537 107.525 107.525 107.525 107.525 106.513 106.513 106.513 106.513 105.501 105.501 105.501 105.501 104.489 104.489 104.489 104.489 103.477 103.477 103.477 103.477 102.465 102.465 102.465 102.465 101.453 101.453 101.453 101.453 100.441 100.441 100.441 100.441 99.429 99.429 99.429 99.429 98.417 98.417 98.417 98.417 97.405 97.405 97.405 97.405 96.393 96.393 96.393 96.393 95.381 95.381 95.381 95.381 94.369 94.369 94.369 94.369 93.357 93.357 93.357 93.357 92.345 92.345 92.345 92.345 91.333 91.333 91.333 91.333 90.321 90.321 90.321 90.321 89.309 89.309 89.309 89.309 88.297 88.297 88.297 88.297 87.285 87.285 87.285 87.285 86.273 86.273 86.273 86.273 85.261 85.261 85.261 85.261 84.249 84.249 84.249 84.249 83.237 83.237 83.237 83.237 82.225 82.225 82.225 82.225 81.213 81.213 81.213 81.213 80.201 80.201 80.201 80.201 79.189 79.189 79.189 79.189 78.177 78.177 78.177 78.177 77.165 77.165 77.165 77.165 76.153 76.153 76.153 76.153 75.141 75.141 75.141 75.141 74.129 74.129 74.129 74.129 73.117 73.117 73.117 73.117 72.105 72.105 72.105 72.105 71.093 71.093 71.093 71.093 70.081 70.081 70.081 70.081 69.069 69.069 69.069 69.069 68.057 68.057 68.057 68.057 67.045 67.045 67.045 67.045 66.033 66.033 66.033 66.033 65.021 65.021 65.021 65.021 64.009 64.009 64.009 64.009 63.997 63.997 63.997 63.997 62.985 62.985 62.985 62.985 61.973 61.973 61.973 61.973 60.961 60.961 60.961 60.961 59.949 59.949 59.949 59.949 58.937 58.937 58.937 58.937 57.925 57.925 57.925 57.925 56.913 56.913 56.913 56.913 55.901 55.901 55.901 55.901 54.889 54.889 54.889 54.889 53.877 53.877 53.877 53.877 52.865 52.865 52.865 52.865 51.853 51.853 51.853 51.853 50.841 50.841 50.841 50.841 49.829 49.829 49.829 49.829 48.817 48.817 48.817 48.817 47.805 47.805 47.805 47.805 46.793 46.793 46.793 46.793 45.781 45.781 45.781 45.781 44.769 44.769 44.769 44.769 43.757 43.757 43.757 43.757 42.745 42.745 42.745 42.745 41.733 41.733 41.733 41.733 40.721 40.721 40.721 40.721 39.709 39.709 39.709 39.709 38.697 38.697 38.697 38.697 37.685 37.685 37.685 37.685 36.673 36.673 36.673 36.673 35.661 35.661 35.661 35.661 34.649 34.649 34.649 34.649 33.637 33.637 33.637 33.637 32.625 32.625 32.625 32.625 31.613 31.613 31.613 31.613 30.601 30.601 30.601 30.601 29.589 29.589 29.589 29.589 28.577 28.577 28.577 28.577 27.565 27.565 27.565 27.565 26.553 26.553 26.553 26.553 25.541 25.541 25.541 25.541 24.529 24.529 24.529 24.529 23.517 23.517 23.517 23.517 22.505 22.505 22.505 22.505 21.493 21.493 21.493 21.493 20.481 20.481 20.481 20.481 19.469 19.469 19.469 19.469 18.457 18.457 18.457 18.457 17.445 17.445 17.445 17.445 16.433 16.433 16.433 16.433 15.421 15.421 15.421 15.421 14.409 14.409 14.409 14.409 13.397 13.397 13.397 13.397 12.385 12.385 12.385 12.385 11.373 11.373 11.373 11.373 10.361 10.361 10.361 10.361 9.349 9.349 9.349 9.349 8.337 8.337 8.337 8.337 7.325 7.325 7.325 7.325 6.313 6.313 6.313 6.313 5.301 5.301 5.301 5.301 4.289 4.289 4.289 4.289 3.277 3.277 3.277 3.277 2.265 2.265 2.265 2.265 1.253 1.253 1.253 1.253 0.241 0.241 0.241 0.241 0.000 0.000 0.000 0.000	
Existing Ground Level	179.353 177.353 177.353 177.353 176.341 176.341 176.341 176.341 175.329 175.329 175.329 175.329 174.317 174.317 174.317 174.317 173.305 173.305 173.305 173.305 172.293 172.293 172.293 172.293 171.281 171.281 171.281 171.281 170.269 170.269 170.269 170.269 169.257 169.257 169.257 169.257 168.245 168.245 168.245 168.245 167.233 167.233 167.233 167.233 166.221 166.221 166.221 166.221 165.209 165.209 165.209 165.209 164.197 164.197 164.197 164.197 163.185 163.185 163.185 163.185 162.173 162.173 162.173 162.173 161.161 161.161 161.161 161.161 160.149 160.149 160.149 160.149 159.137 159.137 159.137 159.137 158.125 158.125 158.125 158.125 157.113 157.113 157.113 157.113 156.101 156.101 156.101 156.101 155.089 155.089 155.089 155.089 154.077 154.077 154.077 154.077 153.065 153.065 153.065 153.065 152.053 152.053 152.053 152.053 151.041 151.041 151.041 151.041 150.029 150.029 150.029 150.029 149.017 149.017 149.017 149.017 148.005 148.005 148.005 148.005 146.993 146.993 146.993 146.993 145.981 145.981 145.981 145.981 144.969 144.969 144.969 144.969 143.957 143.957 143.957 143.957 142.945 142.945 142.945 142.945 141.933 141.933 141.933 141.933 140.921 140.921 140.921 140.921 139.909 139.909 139.909 139.909 138.897 138.897 138.897 138.897 137.885 137.885 137.885 137.885 136.873 136.873 136.873 136.873 135.861 135.861 135.861 135.861 134.849 134.849 134.849 134.849 133.837 133.837 133.837 133.837 132.825 132.825 132.825 132.825 131.813 131.813 131.813 131.813 130.801 130.801 130.801 130.801 129.789 129.789 129.789 129.789 128.777 128.777 128.777 128.777 127.765 127.765 127.765 127.765 126.753 126.753 126.753 126.753 125.741 125.741 125.741 125.741 124.729 124.729 124.729 124.729 123.717 123.717 123.717 123.717 122.705 122.705 122.705 122.705 121.693 121.693 121.693 121.693 120.681 120.681 120.681 120.681 119.669 119.669 119.669 119.669 118.657 118.657 118.657 118.657 117.645 117.645 117.645 117.645 116.633 116.633 116.633 116.633 115.621 115.621 115.621 115.621 114.609 114.609 114.609 114.609 113.597 113.597 113.597 113.597 112.585 112.585 112.585 112.585 111.573 111.573 111.573 111.573 110.561 110.561 110.561 110.561 109.549 109.549 109.549 109.549 108.537 108.537 108.537 108.537 107.525 107.525 107.525 107.525 106.513 106.513 106.513 106.513 105.501 105.501 105.501 105.501 104.489 104.489 104.489 104.489 103.477 103.477 103.477 103.477 102.465 102.465 102.465 102.465 101.453 101.453 101.453 101.453 100.441 100.441 100.441 100.441 99.429 99.429 99.429 99.429 98.417 98.417 98.417 98.417 97.405 97.405 97.405 97.405 96.393 96.393 96.393 96.393 95.381 95.381 95.381 95.381 94.369 94.369 94.369 94.369 93.357 93.357 93.357 93.357 92.345 92.345 92.345 92.345 91.333 91.333 91.333 91.333 90.321 90.321 90.321 90.321 89.309 89.309 89.309 89.309 88.297 88.297 88.297 88.297 87.285 87.285 87.285 87.285 86.273 86.273 86.273 86.273 85.261 85.261 85.261 85.261 84.249 84.249 84.249 84.249 83.237 83.237 83.237 83.237 82.225 82.225 82.225 82.225 81.213 81.213 81.213 81.213 80.201 80.201 80.201 80.201 79.189 79.189 79.189 79.189 78.177 78.177 78.177 78.177 77.165 77.165 77.165 77.165 76.153 76.153 76.153 76.153 75.141 75.141 75.141 75.141 74.129 74.129 74.129 74.129 73.117 73.117 73.117 73.117 72.105 72.105 72.105 72.105 71.093 71.093 71.093 71.093 70.081 70.081 70.081 70.081 69.069 69.069 69.069 69.069 68.057 68.057 68.057 68.057 67.045 67.045 67.045 67.045 66.033 66.033 66.033 66.033 65.021 65.021 65.021 65.021 64.009 64.009 64.009 64.009 63.997 63.997 63.997 63.997 62.985 62.985 62.985 62.985 61.973 61.973 61.973 61.973 60.961 60.961 60.961 60.961 59.949 59.949 59.949 59.949 58.937 58.937 58.937 58.937 57.925 57.925 57.925 57.925 56.913 56.913 56.913 56.913 55.901 55.901 55.901 55.901 54.889 54.889 54.889 54.889 53.877 53.877 53.877 53.877 52.865 52.865 52.865 52.865 51.853 51.853 51.853 51.853 50.841 50.841 50.841 50.841 49.829 49.829 49.829 49.829 48.817 48.817 48.817 48.817 47.805 47.805 47.805 47.805 46.793 46.793 46.793 46.793 45.781 45.781 45.781 45.781 44.769 44.769 44.769 44.769 43.757 43.757 43.757 43.757 42.745 42.745 42.745 42.745 41.733 41.733 41.733 41.733 40.721 40.721 40.721 40.721 39.709 39.709 39.709 39.709 38.697 38.697 38.697 38.697 37.685 37.685 37.685 37.685 36.673 36.673 36.673 36.673 35.661 35.661 35.661 35.661 34.649 34.649 34.649 34.649 33.637 33.637 33.637 33.637 32.625 32.625 32.625 32.625 31.613 31.613 31.613 31.613 30.601 30.601 30.601 30.601 29.589 29.589 29.589 29.589 28.577 28.577 28.577 28.577 27.565 27.565 27.565 27.565 26.553 26.553 26.553 26.553 25.541 25.541 25.541 25.541 24.529 24.529 24.529 24.529 23.517 23.517 23.517 23.517 22.505 22.505 22.505 22.505 21.493 21.493 21.493 21.493 20.481 20.481 20.481 20.481 19.469 19.469 19.469 19.469 18.457 18.457 18.457 18.457 17.445 17.445 17.445 17.445 16.433 16.433 16.433 16.433 15.421 15.421 15.421 15.421 14.409 14.409 14.409 14.409 13.397 13.397 13.397 13.397 12.385 12.385 12.385 12.385 11.373 11.373 11.373 11.373 10.361 10.361 10.361 10.361 9.349 9.349 9.349 9.349 8.337 8.337 8.337 8.337 7.325 7.325 7.325 7.325 6.313 6.313 6.313 6.313 5.301 5.301 5.301 5.301 4.289 4.289 4.289 4.289 3.277 3.277 3.277 3.277 2.265 2.265 2.265 2.265 1.253 1.253 1.253 1.253 0.241 0.241 0.241 0.241 0.000 0.000 0.000 0.000	
Level Difference	0.000 -0.996 -1.567 -1.445 3.607 167.886 8.181 10.851 15.665 165.521 163.788 162.180 160.689 87.713 151.894 10.296 147.211 158.107 12.462 144.508 157.000 11.782 143.377 155.159 10.302 143.205 154.405 12.867 156.203 153.336 -10.842 163.820 152.978 -16.314 168.952 152.638 16.289 168.623 152.855 -9.906 162.971 153.064 -1.383 155.357 153.974 2.045 152.571 154.616 4.335 150.991 153.304 7.573 148.825 156.398 6.673 150.048 156.721 3.411 153.548 158.989 1.019 155.855 156.871 0.935 155.890 159.295 -0.227 156.012 155.786 -0.822 156.013 156.190 -1.612 156.203 159.591 0.743 143.060 143.804 1.532 141.771 142.204 2.936 139.650 145.008 3.600 137.808 141.406 4.375 136.432 140.887 4.511 135.697 140.208 1.177 137.857 139.005 1.554 139.864 138.410 -3.209 141.020 137.811 -4.823 142.034 137.211 -5.987 142.598 136.612 -6.898 141.281 135.413 -3.647 135.845 134.814 -2.452 136.867 134.215 -1.376 134.591 133.615 -0.021 133.037 133.016 0.012 130.856 131.818 1.410 129.806 131.218 1.981 128.638 130.619 1.508 128.512 130.020 -1.243 124.140 122.887 -0.500 122.991 122.481 1.303 120.703 122.054 2.359 120.159 122.023 2.792 119.544 122.337 2.786 119.895 122.681 0.544 123.180 123.744 -1.292 125.759 124.463 -2.702 127.930 125.227 -3.300 128.161 126.960 3.339 129.694 126.369 2.522 129.487 126.935 -1.837 128.855 127.018 -1.582 128.956 126.964 -1.972 128.745 126.773 -0.347 127.291 126.444 126.946	
Horizontal Alignment	R: 1020.000 L: 1034.039	R: 2880.000 L



Reproduced by permission of Ordnance Survey on behalf of HMSO.
© Crown copyright and database right (2017). All rights reserved.
Ordnance Survey Licence number 100046668.

D01_001 - LONGSECTION
SCALE: H 1:100,V 1:20. DATUM: 60.000



Proposed Ground Level	126.978 126.375 124.841 124.634 123.656 123.756 122.742 122.879 120.879 120.135 118.516 118.022 116.683 116.064 115.200 114.200 113.200 112.200 111.200 110.200 109.200 108.200 107.200 106.200 105.200 104.200 103.200 102.200 101.200 100.200 99.200 98.200 97.200 96.200 95.200 94.200 93.200 92.200 91.200 90.200 89.200 88.200 87.200 86.200 85.200 84.200 83.200 82.200 81.200 80.200 79.200 78.200 77.200 76.200 75.200 74.200 73.200 72.200 71.200 70.200 69.200 68.200 67.200 66.200 65.200 64.200 63.200 62.200 61.200 60.200
Existing Ground Level	126.292 124.841 123.656 123.756 122.742 122.879 120.879 120.135 118.516 118.022 116.683 116.064 115.200 114.200 113.200 112.200 111.200 110.200 109.200 108.200 107.200 106.200 105.200 104.200 103.200 102.200 101.200 100.200 99.200 98.200 97.200 96.200 95.200 94.200 93.200 92.200 91.200 90.200 89.200 88.200 87.200 86.200 85.200 84.200 83.200 82.200 81.200 80.200 79.200 78.200 77.200 76.200 75.200 74.200 73.200 72.200 71.200 70.200 69.200 68.200 67.200 66.200 65.200 64.200 63.200 62.200 61.200 60.200
Level Difference	-0.304 -0.528 1.050 1.127 1.534 1.534 -0.932 -1.359 -1.239 0.182 1.486 1.172 4.550 10.315 14.890 13.465 9.981 8.981 1.675 -4.546 -11.777 -11.777 -19.444 -17.594 -15.230 -9.985 -9.910 2.248 4.990 7.177 7.537 1.005 0.971 -3.789 -5.321 -4.980 7.537 -3.706 -2.129 -0.632 0.005 2.894 3.016 4.007 5.790 7.537 -1.359 -4.896 -6.390 -9.376 -9.431 -2.530 -6.588 -3.012 -1.312 2.894 2.764 0.935 1.336 -3.402 -5.249 -5.202 -3.645 -3.645 -9.622 -10.269 -8.790 -3.864 1.089 4.521 5.688 6.659 8.042 5.613 3.322 2.047 0.260 0.134 -0.385 0.462 0.579 1.452 2.627 7.299 7.813 76.183 76.465 76.747
Horizontal Alignment	L=2120.612 R=5000.000 L=1212.286 R=2880.000 L=1097.052 L=1406.222 R=1020.000 L=1099.209
Vertical Alignment	R=18200.000 K=182.000 L=683.827 R=20000.000 K=200.000 L=876.088 R=25000.000 K=250.000 L=1104.929 R=20000.000 K=200.000 L=716.693 R=18200.000 K=182.000 L=693.900 G=-3.507% L=493.864 R=30000.000 K=300.000 L=1221.402 G=0.563% L=699.684
Chainage	5+600 5+650 5+700 5+750 5+800 5+850 5+900 5+950 5+1000 5+1050 5+1100 5+1150 5+1200 5+1250 5+1300 5+1350 5+1400 5+1450 5+1500 5+1550 5+1600 5+1650 5+1700 5+1750 5+1800 5+1850 5+1900 5+1950 5+2000 5+2050 5+2100 5+2150 5+2200 5+2250 5+2300 5+2350 5+2400 5+2450 5+2500 5+2550 5+2600 5+2650 5+2700 5+2750 5+2800 5+2850 5+2900 5+2950 5+3000 5+3050 5+3100 5+3150 5+3200 5+3250 5+3300 5+3350 5+3400 5+3450 5+3500 5+3550 5+3600 5+3650 5+3700 5+3750 5+3800 5+3850 5+3900 5+3950 5+4000 5+4050 5+4100 5+4150 5+4200 5+4250 5+4300 5+4350 5+4400 5+4450 5+4500 5+4550 5+4600 5+4650 5+4700 5+4750 5+4800 5+4850 5+4900 5+4950 5+5000

P01	Revision details				
	KB	RO	FM	GW	AGF
	23/02/18	23/02/18	23/02/18	19/04/18	19/04/18
Revision	Revision details				
	Created	Checked	Reviewed	Approved	Authorised
	dd/mm/yy	dd/mm/yy	dd/mm/yy	dd/mm/yy	dd/mm/yy

Designer
Precision House
McNeil Drive
Motherwell
ML1 4UR

Client
58 Port Dundas Road
Glasgow
G4 0HF

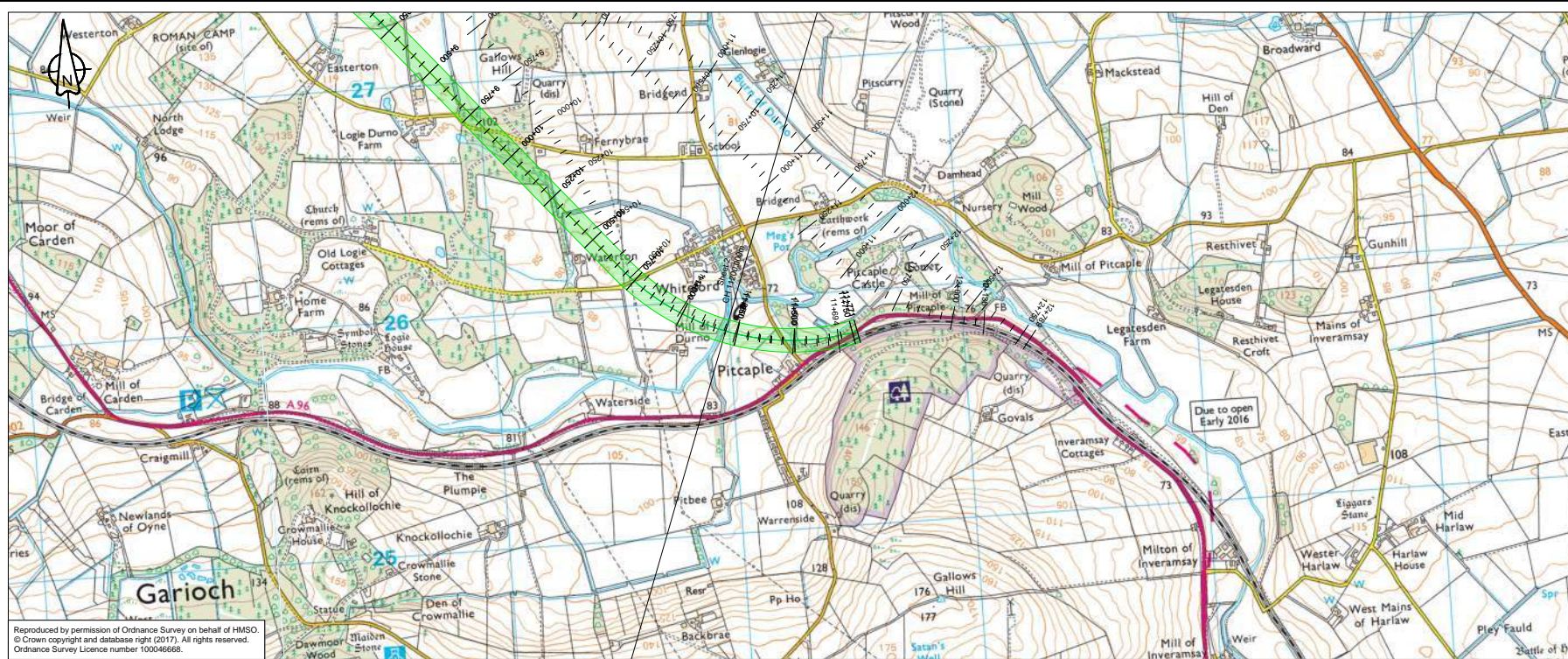
Project Name
A96 Dualling East of Huntly to Aberdeen

Drawing Title
D01-001 First Fix Alignment Plan and Profile
Sheet 2 of 3

Project Ref. No.	Stage	Scale
250002-92	2	1:1000H 1:2000V @ A1
		Dimensions : M

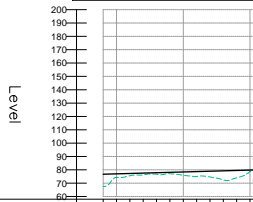
Drawing Number	Originator	Volume
A96PEA - AMAR - HGN -		
CD	-DR-CH-	001102
Location	Type	Role

Suitability	Suitability Description	Revision
S2	Fit for Information	P01



Reproduced by permission of Ordnance Survey on behalf of HMSO.
 © Crown copyright and database right (2017). All rights reserved.
 Ordnance Survey Licence number 100046668.

D01_001 - LONGSECTION
 SCALE: H 1:100,V 1:20. DATUM: 60.000



Proposed Ground Level	76.747 77.020 77.312 77.594 77.876 78.158 78.441 78.723 79.006 79.288 79.570 79.852
Existing Ground Level	67.646 74.347 75.594 76.235 77.068 77.949 78.441 78.723 74.887 74.862 72.453 72.453 73.714
Level Difference	9.101 2.682 1.728 1.359 1.090 2.492 3.737 4.324 4.324 4.425 7.117 6.448
Horizontal Alignment	—
Vertical Alignment	G = 0.565% L = 669.684
Chainage	11+200 11+300 11+350 11+400 11+450 11+500 11+550 11+600 11+650 11+700

P01	Revision details				
	KB	RO	FM	GW	AGF
	23/02/18	23/02/18	23/02/18	19/04/18	19/04/18
Revision	Revision details				
	Created	Checked	Reviewed	Approved	Authorised
	dd/mm/yy	dd/mm/yy	dd/mm/yy	dd/mm/yy	dd/mm/yy

Designer
 Precision House
 McNeil Drive
 Mothenwell
 ML1 4UR

Client
 58 Port Dundas Road
 Glasgow
 G4 0HF

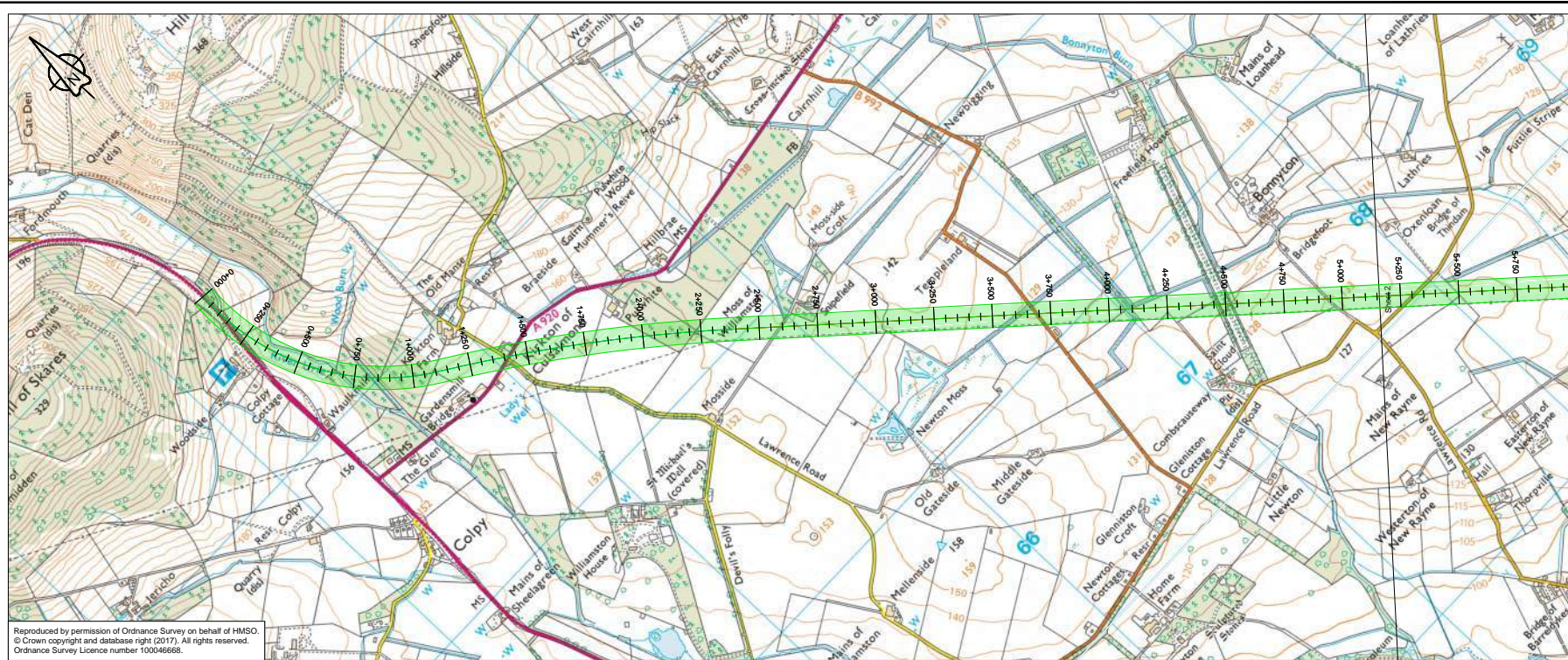
Project Name
A96 Dualling East of Huntly to Aberdeen

Drawing Title
D01-001 First Fix Alignment Plan and Profile
 Sheet 3 of 3

Project Ref. No.	Stage	Scale : 1:1000H 1:2000V @ A1
250002-92	2	Dimensions : M

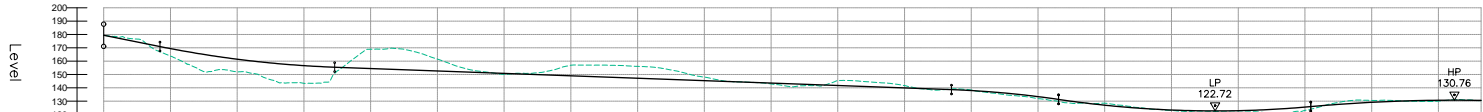
Drawing Number	Project	Originator	Volume
A96PEA - AMAR - HGN -	CD	-DR-CH-	001103
	Location	Type	Role
			Number

Suitability	Suitability Description	Revision
S2	Fit for Information	P01



Reproduced by permission of Ordnance Survey on behalf of HMSO.
© Crown copyright and database right (2017). All rights reserved.
Ordnance Survey Licence number 100046668.

D01_002 - LONGSECTION
SCALE: H 1:10000, V 1:2000, DATUM: 120.000



Proposed Road Level	179.353 -0.995 -1.386 3.470 5.563 8.359 11.184 12.031 8.466 9.157 11.337 13.675 13.561 13.591 12.517 9.570 -8.995 -8.975 -14.455 -15.604 -11.970 -8.863 -5.826 -5.826 -1.017 -0.151 -0.431 -0.762 -4.907 -8.971 -8.801 -7.859 -4.313 -7.914 -0.096 -0.063 0.084 0.671 -3.573 -4.076 0.153 -0.757 -0.414 0.512 0.932 1.148 1.493 1.526 0.909 0.909 -1.468 -0.764 -0.266 -0.040 0.641 0.899 0.752 1.080 2.159 3.101 3.214 2.430 0.996 -2.264 -1.462 -1.140 -0.360 0.638 0.638 -0.332 -0.221
Existing Ground Level	179.353 176.346 175.355 171.356 169.355 167.556 166.842 164.253 161.450 160.237 158.148 155.209 152.794 150.719 147.525 145.029 144.865 144.302 143.506 142.849 142.122 141.789 141.065 140.668 140.304 139.941 139.577 139.213 138.849 138.470 137.971 137.335 136.561 135.690 134.670 133.454 133.015 132.623 132.082 129.689 128.404 128.025 125.179 124.458 123.861 123.361 122.861 122.361 121.861 121.361 120.861 120.361 119.861 119.361 118.861 118.361 117.861 117.361 116.861 116.361 115.861 115.361 114.861 114.361 113.861 113.361 112.861 112.361 111.861 111.361 110.861 110.361 109.861 109.361 108.861 108.361 107.861 107.361 106.861 106.361 105.861 105.361 104.861 104.361 103.861 103.361 102.861 102.361 101.861 101.361 100.861 100.361 99.861 99.361 98.861 98.361 97.861 97.361 96.861 96.361 95.861 95.361 94.861 94.361 93.861 93.361 92.861 92.361 91.861 91.361 90.861 90.361 89.861 89.361 88.861 88.361 87.861 87.361 86.861 86.361 85.861 85.361 84.861 84.361 83.861 83.361 82.861 82.361 81.861 81.361 80.861 80.361 79.861 79.361 78.861 78.361 77.861 77.361 76.861 76.361 75.861 75.361 74.861 74.361 73.861 73.361 72.861 72.361 71.861 71.361 70.861 70.361 69.861 69.361 68.861 68.361 67.861 67.361 66.861 66.361 65.861 65.361 64.861 64.361 63.861 63.361 62.861 62.361 61.861 61.361 60.861 60.361 59.861 59.361 58.861 58.361 57.861 57.361 56.861 56.361 55.861 55.361 54.861 54.361 53.861 53.361 52.861 52.361 51.861 51.361 50.861 50.361 49.861 49.361 48.861 48.361 47.861 47.361 46.861 46.361 45.861 45.361 44.861 44.361 43.861 43.361 42.861 42.361 41.861 41.361 40.861 40.361 39.861 39.361 38.861 38.361 37.861 37.361 36.861 36.361 35.861 35.361 34.861 34.361 33.861 33.361 32.861 32.361 31.861 31.361 30.861 30.361 29.861 29.361 28.861 28.361 27.861 27.361 26.861 26.361 25.861 25.361 24.861 24.361 23.861 23.361 22.861 22.361 21.861 21.361 20.861 20.361 19.861 19.361 18.861 18.361 17.861 17.361 16.861 16.361 15.861 15.361 14.861 14.361 13.861 13.361 12.861 12.361 11.861 11.361 10.861 10.361 9.861 9.361 8.861 8.361 7.861 7.361 6.861 6.361 5.861 5.361 4.861 4.361 3.861 3.361 2.861 2.361 1.861 1.361 0.861 0.361 -0.140 -0.221
Level Difference	0.000 -0.995 -1.386 3.470 5.563 8.359 11.184 12.031 8.466 9.157 11.337 13.675 13.561 13.591 12.517 9.570 -8.995 -8.975 -14.455 -15.604 -11.970 -8.863 -5.826 -5.826 -1.017 -0.151 -0.431 -0.762 -4.907 -8.971 -8.801 -7.859 -4.313 -7.914 -0.096 -0.063 0.084 0.671 -3.573 -4.076 0.153 -0.757 -0.414 0.512 0.932 1.148 1.493 1.526 0.909 0.909 -1.468 -0.764 -0.266 -0.040 0.641 0.899 0.752 1.080 2.159 3.101 3.214 2.430 0.996 -2.264 -1.462 -1.140 -0.360 0.638 0.638 -0.332 -0.221
Horizontal Alignment	R: 1020.000 L: 1110.019 R: 7000.000 L: 1281.949 L: 4209.346
Vertical Alignment	G = -0.999% L = 210.844 R = 20000.000 K = 200.000 L = 654.314 G = -0.727% L = 2310.498 R = 18200.000 K = 182.000 L = 401.347 G = 20000.000 K = 945.108 R = 30000.000 K = 300.000 L = 1251.459
Chainage	0+000 0+100 0+200 0+300 0+400 0+500 0+600 0+700 0+800 0+900 0+1000 1+000 1+100 1+200 1+300 1+400 1+500 1+600 1+700 1+800 1+900 2+000 2+100 2+200 2+300 2+400 2+500 2+600 2+700 2+800 2+900 3+000 3+100 3+200 3+300 3+400 3+500 3+600 3+700 3+800 3+900 4+000 4+100 4+200 4+300 4+400 4+500 4+600 4+700 4+800 4+900 5+000 5+100 5+100

P01	Revision details				
	KB	RO	FM	GW	AGF
	23/02/18	23/02/18	23/02/18	19/04/18	19/04/18
Revision	Revision details				
	Created	Checked	Reviewed	Approved	Authorised
	dd/mm/yy	dd/mm/yy	dd/mm/yy	dd/mm/yy	dd/mm/yy

Designer
Precision House
McNeil Drive
Mothwell
ML1 4UR

Client
58 Port Dundas Road
Glasgow
G4 0HF

Project Name
A96 Dualling East of Huntly to Aberdeen

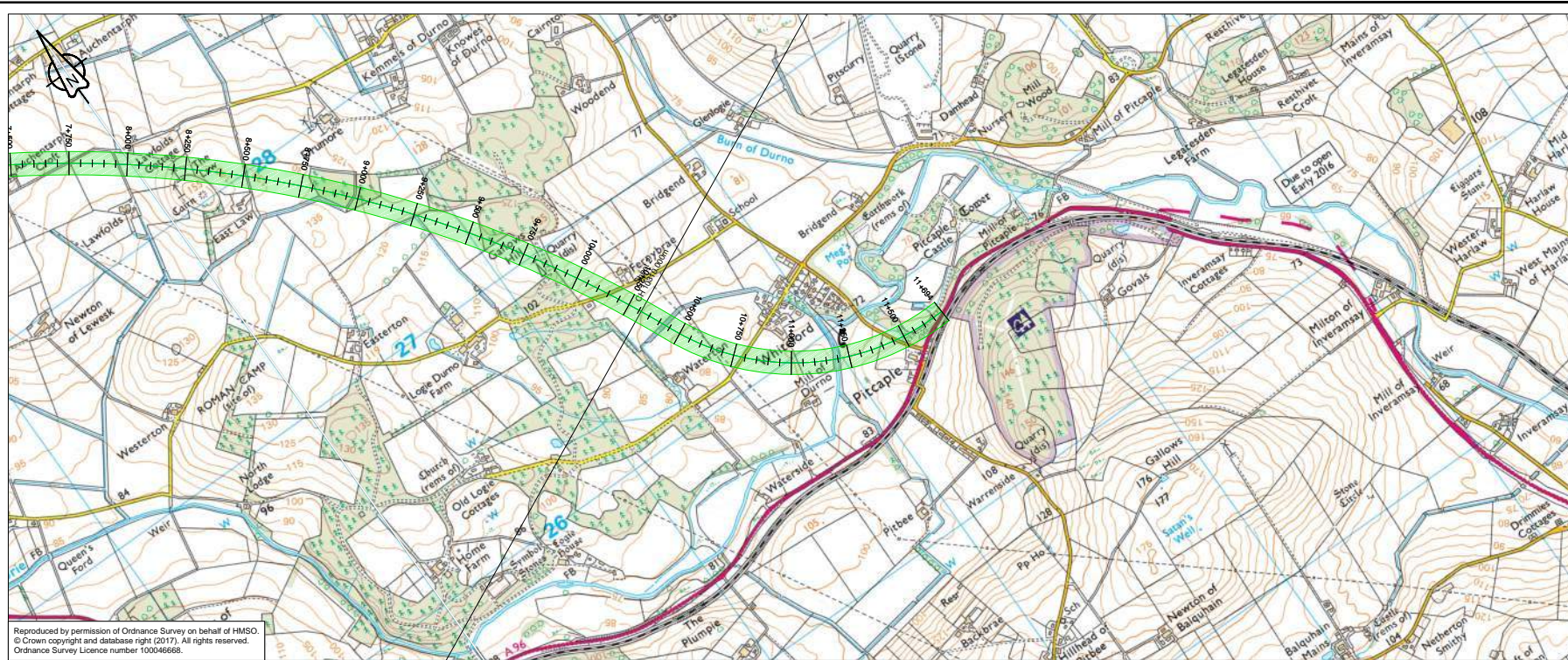
Drawing Title
D01-002 First Fix Alignment Plan and Profile
Sheet 1 of 3

Project Ref. No.	Stage	Scale
250002-92	2	1:10000H 1:2000V @ A1
Dimensions : M		

Drawing Number
Project
Originator
Volume

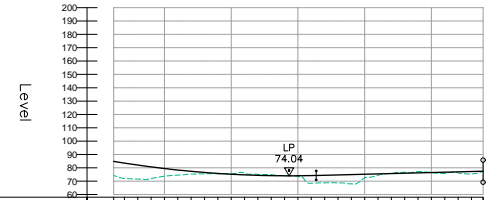
A96PEA - AMAR - HGN -
CD -DR-CH- 001201
Location
Type | Role | Number

Suitability	Suitability Description	Revision
S2	Fit for Information	P01



Reproduced by permission of Ordnance Survey on behalf of HMSO.
 © Crown copyright and database right (2017). All rights reserved.
 Ordnance Survey Licence number 100046668.

D01_002 - LONGSECTION
 SCALE: H 1:10000, V 1:2000. DATUM: 60.000



Proposed Road Level	84.628 85.553 86.073 86.718 78.386 77.405 76.550 75.821 75.216 74.827 74.153 74.048 74.089 74.214 74.716 74.969 75.223 75.478 75.732 76.246 76.442 76.495 76.750 77.004 77.258 77.461	
Existing Ground Level	74.268 72.036 71.814 71.917 74.156 75.950 75.448 75.553 75.515 75.037 74.873 74.257 73.468 68.435 68.711 68.029 72.606 74.433 75.796 77.264 76.442 75.816 76.203 75.386 77.461	
Level Difference	10.596 11.514 10.459 8.801 5.822 2.055 1.101 0.288 -0.288 -0.251 -0.229 0.691 5.779 6.034 6.940 2.617 -0.084 -0.023 0.054 0.933 0.891 1.872 0.000	
Horizontal Alignment	R=6000.000 L: 3168.108	R: 1020.000 L: 1233.420
Vertical Alignment	$R = 20000.000$ $L = 816.020$	
Chainage	10+310 10+350 10+400 10+450 10+500 10+550 10+600 10+650 10+700 10+750 10+800 10+850 10+900 10+950 11+000 11+050 11+100 11+150 11+200 11+250 11+300 11+350 11+400 11+450 11+500	$G = 0.509\%$ $L = 5625.091$

P01	Revision details				
	KB	RD	FM	GW	AGF
	23/02/18	23/02/18	23/02/18	19/04/18	19/04/18
Revision	Revision details				
	Created	Checked	Reviewed	Approved	Authorised
	dd/mm/yy	dd/mm/yy	dd/mm/yy	dd/mm/yy	dd/mm/yy

Designer
 Precision House
 McNeil Drive
 Mothenwell
 ML1 4UR

Client
 58 Port Dundas Road
 Glasgow
 G4 0HF

Project Name
A96 Dualling East of Huntly to Aberdeen

Drawing Title
D01-002 First Fix Alignment Plan and Profile
 Sheet 3 of 3

Project Ref. No.	Stage	Scale
250002-92	2	1:10000H 1:2000V @ A1
Dimensions		M

Drawing Number	Project	Originator	Volume
A96PEA	- AMAR -	HGN -	
CD	-DR-CH- 001203		
Location		Type	Role
			Number

Suitability	Suitability Description	Revision
S2	Fit for Information	P01