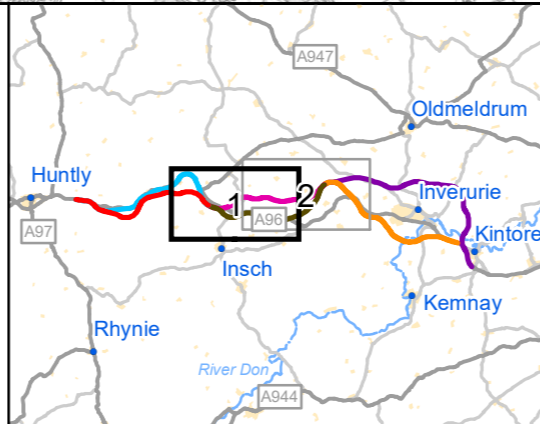


- Route Option**
- Pink
 - Adjoining
 - 500m Buffer
- Faults and Rock Segments**
- Fault, Inferred
 - ▲ Reverse or Thrust Fault
 - Slide, Inferred
- Bedrock Geology**
- INSMZ-NGBN - Insch Pluton, Middle Zone
 - INSUZ-MZDO - Insch Pluton, Upper Zone
 - INSUZ-OLGBFE - Insch Pluton, Upper Zone
 - NEGRA-GRPA - North-East Grampian Granitic Suite (Ordovician)



ASS DUALLING EAST OF HUNTLY TO ABERDEEN

Amey Arup

TRANSPORT SCOTLAND

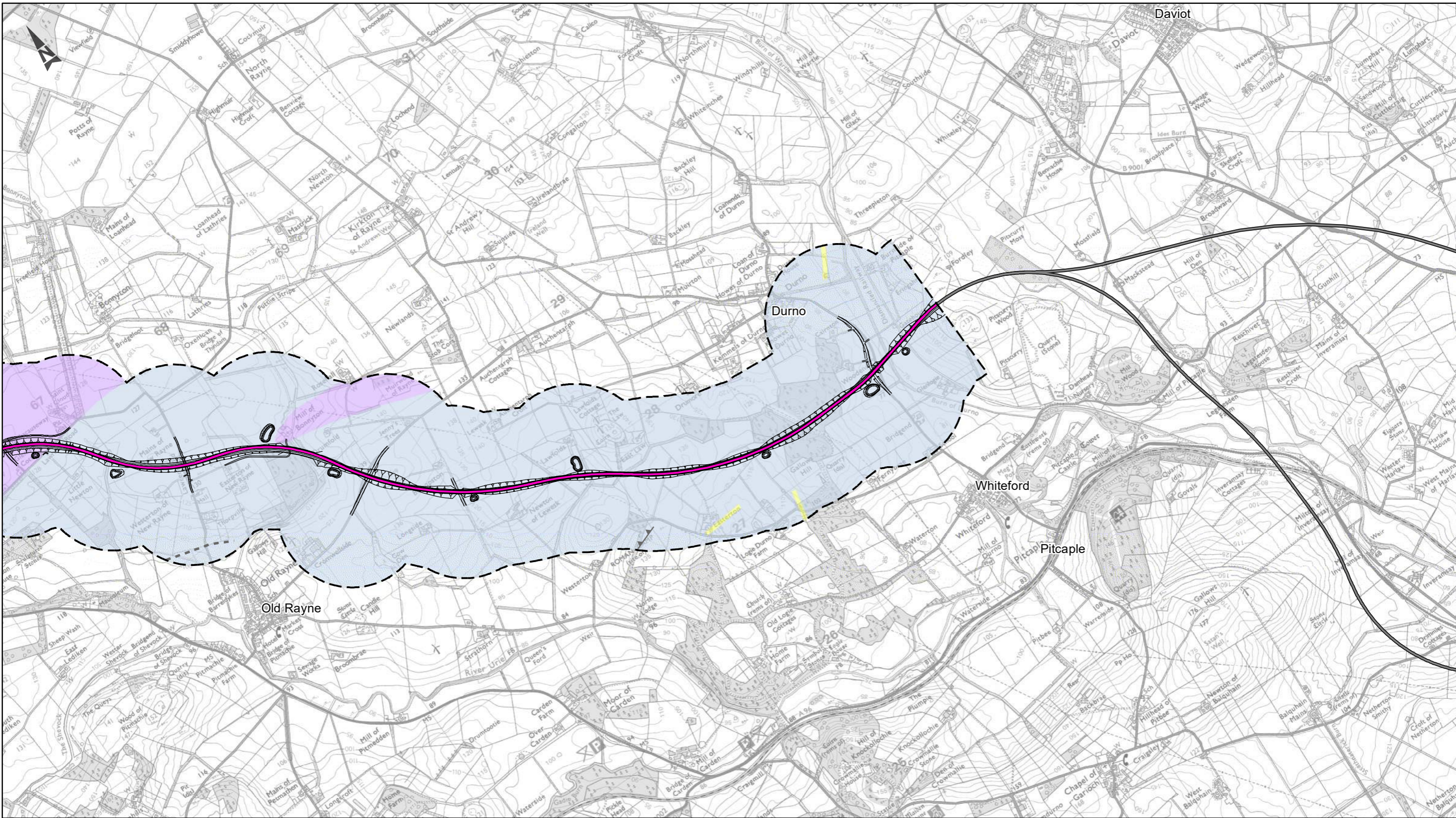
C01	First Issue				
	LPAG	MMAT	ALOW	FMAX	GMAC
	18/03/20	18/03/20	25/03/20	03/04/20	03/12/20
Revision	Created	Checked	Reviewed	Approved	Authorised

0 1 2 Kilometres

Scale @ A3: 1:25,000 | Project Ref. No. A96PEA | Stage: Stage 2

© Crown copyright and database right (2020). All rights reserved. OS 100046668.
 © Scottish Environment Protection Agency and database right (2020).
 Reproduced with the permission of the British Geological Survey ©UKRI. All rights Reserved

Project Name A96 Dualling East of Huntly to Aberdeen			
Map Title Figure 6.9 Solid Geology Pink Route Option Sheet 1 of 2			
Map Number Project A96PEA	Originator AMAR	Volume EGT	
SWI Location	MP - CE - 000017 Type Role Number		
Suitability A	Suitability Description Approved for Stage Complete	Revision C01	



Route Option

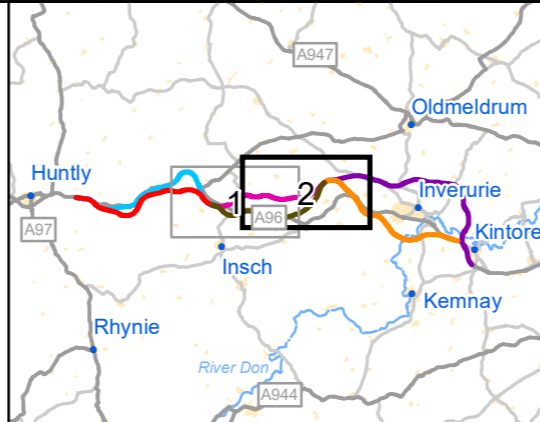
- Pink
- Adjoining
- 500m Buffer Area

Faults and Rock Segments

- Fault, Inferred
- ▲ Reverse or Thrust Fault
- Slide, Inferred

Bedrock Geology

- INSMZ-NGBN - Insch Pluton, Middle Zone
- INSUZ-OLGBFE - Insch Pluton, Upper Zone
- NEGRA-GRPA - North-East Grampian Granitic Suite (Ordovician)
- NEGRA-PEG - North-East Grampian Granitic Suite (Ordovician)



ASS DUALLING EAST OF HUNTLY TO ABERDEEN

Amey Arup

TRANSPORT SCOTLAND

C01	First Issue				
	LPAG	MMAT	ALOW	FMAX	GMAC
Revision	Created	Checked	Reviewed	Approved	Authorised
	18/03/20	18/03/20	25/03/20	03/04/20	03/12/20

Kilometres

0 1 2

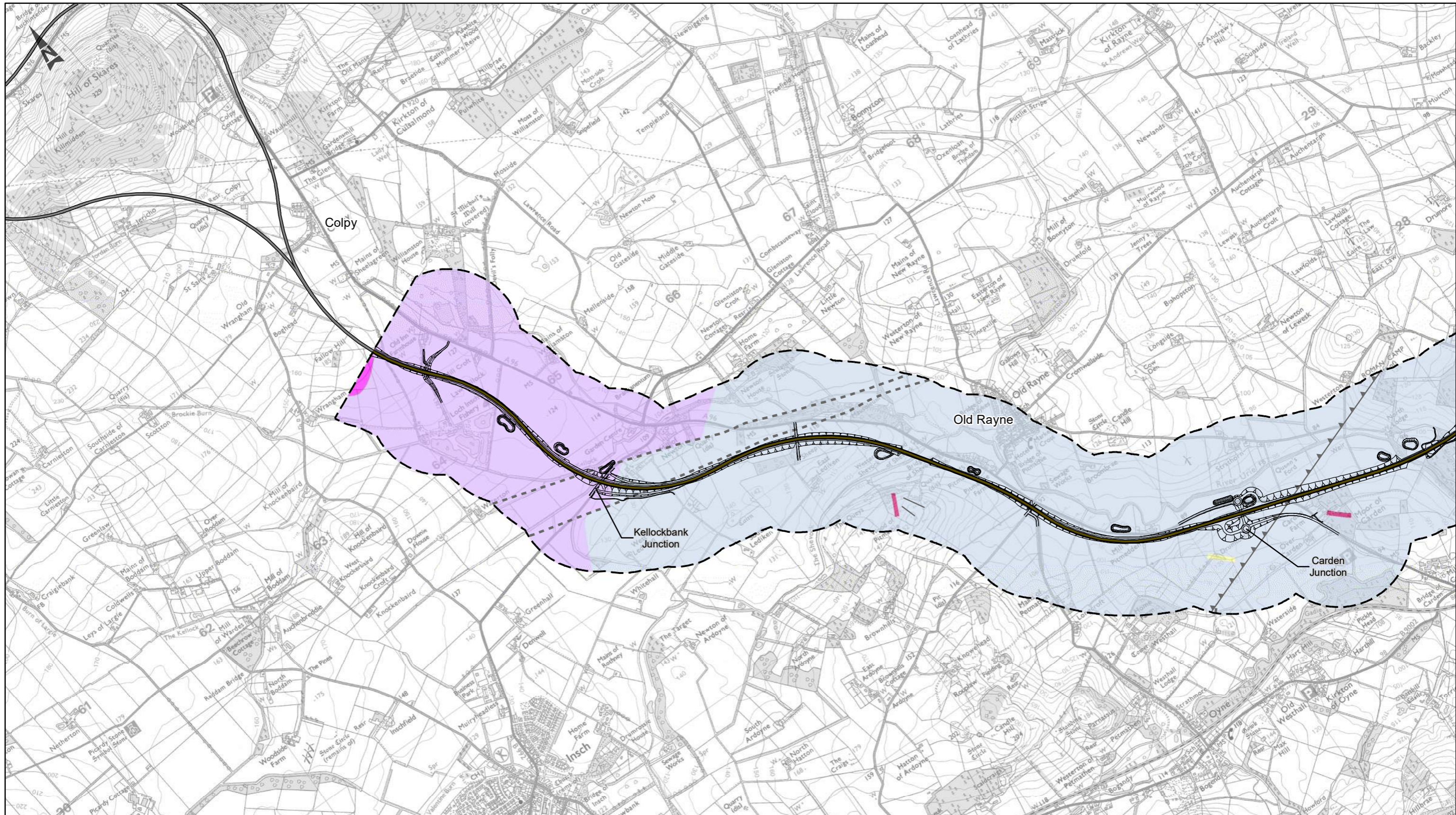
Scale @ A3: 1:25,000 | Project Ref. No. A96PEA | Stage: Stage 2

© Crown copyright and database right (2020). All rights reserved. OS 100046668.
 © Scottish Environment Protection Agency and database right (2020).
 Reproduced with the permission of the British Geological Survey ©UKRI. All rights Reserved

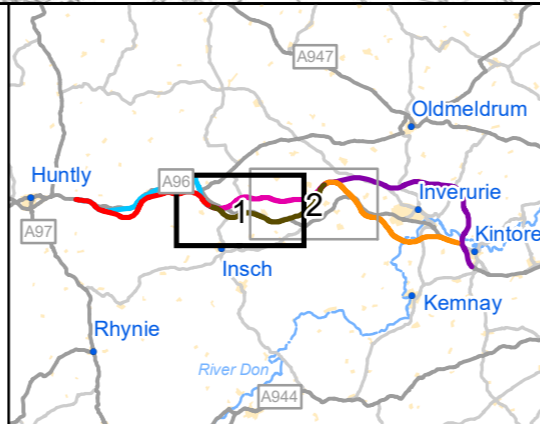
Project Name
A96 Dualling East of Huntly to Aberdeen

Map Title
Figure 6.10 Solid Geology Pink Route Option Sheet 2 of 2

Map Number	Project	Originator	Volume
A96PEA	-	AMAR	- EGT
SWI	-	MP	- CE - 000018
Location	-	Type	Role Number
Suitability	Suitability Description		Revision
A	Approved for Stage Complete		C01



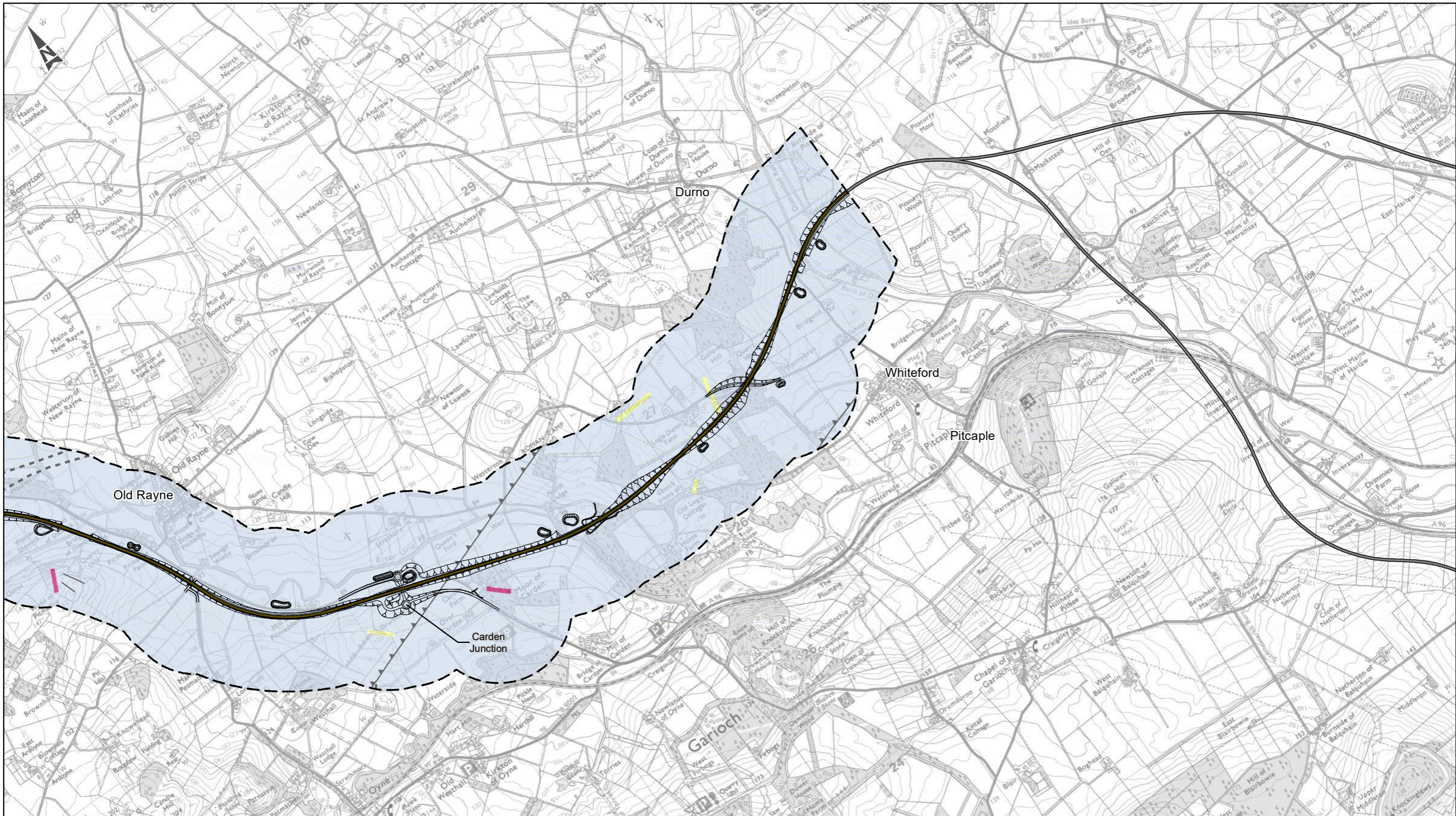
Route Option	Faults and Rock Segments	Bedrock Geology
Brown	Fault, Inferred	BENN-VQ - Bannachie Pluton
Adjoining	Reverse or Thrust Fault	INSMZ-NGBN - Insh Pluton, Middle Zone
500m Buffer Area	Slide, Inferred	INSUZ-MZDO - Insh Pluton, Upper Zone
		INSUZ-OLGBFE - Insh Pluton, Upper Zone
		NEGRA-GRPA - North-East Grampian Granitic Suite (Ordovician)
		NEGRA-PEG - North-East Grampian Granitic Suite (Ordovician)



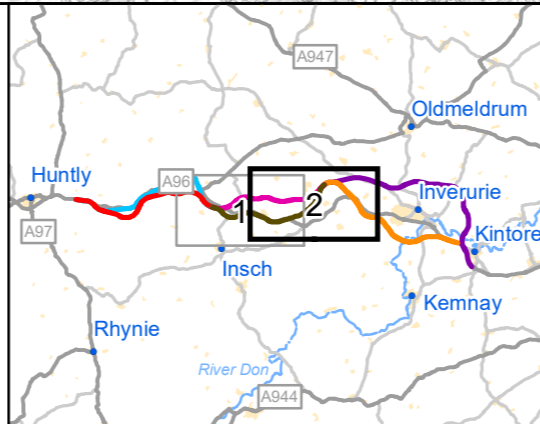
C01	First Issue				
	LPAG	MMAT	ALOW	FMAX	GMAC
	18/03/20	18/03/20	25/03/20	03/04/20	03/12/20
Revision	Created	Checked	Reviewed	Approved	Authorised

Scale @ A3: 1:25,000 | Project Ref. No. A96PEA | Stage: Stage 2
 © Crown copyright and database right (2020). All rights reserved. OS 100046668.
 © Scottish Environment Protection Agency and database right (2020).
 Reproduced with the permission of the British Geological Survey ©UKRI. All rights Reserved

Project Name A96 Dualling East of Huntly to Aberdeen			
Map Title Figure 6.11 Solid Geology Brown Route Option Sheet 1 of 2			
Map Number Project A96PEA	Originator AMAR	Volume EGT	
SWI Location	MP Type	CE Role	000019 Number
Suitability A	Suitability Description Approved for Stage Complete		Revision C01



- Route Option**
- Brown line: Route Option
 - Thick black line: Adjoining
 - Dashed black line: 500m Buffer
- Faults and Rock Segments**
- Dashed line: Fault, Inferred
 - Triangle symbol: Reverse or Thrust Fault
 - Line with triangles: Slide, Inferred
- Bedrock Geology**
- Yellow: BENN-VQ - Bennachie
 - Blue: INSMZ-NGBN - Insch Pluton, Middle
 - Pink: NEGRA-GRPA - North-East Grampian Granitic Suite
 - Light Green: NEGRA-PEG - North-East Grampian Granitic Suite



ASS DUALLING EAST OF HUNTLY TO ABERDEEN

Amey Arup

C01	First Issue	LPAG	MMAT	ALOW	FMAX	GMAC
	Created	18/03/20	18/03/20	25/03/20	03/04/20	03/12/20
Revision	Created	Checked	Reviewed	Approved	Authorised	

Kilometres

Scale @ A3: 1:25,000 | Project Ref. No. A96PEA | Stage: Stage 2

© Crown copyright and database right (2020). All rights reserved. OS 100046668.
 © Scottish Environment Protection Agency and database right (2020).
 Reproduced with the permission of the British Geological Survey ©UKRI. All rights Reserved

Project Name A96 Dualling East of Huntly to Aberdeen			
Map Title Figure 6.12 Solid Geology Brown Route Option Sheet 2 of 2			
Map Number Project	Originator	Volume	
A96PEA	AMAR	EGT	
SWI	MP	CE	000020
Location	Type	Role	Number
Suitability A	Suitability Description Approved for Stage Complete		Revision C01