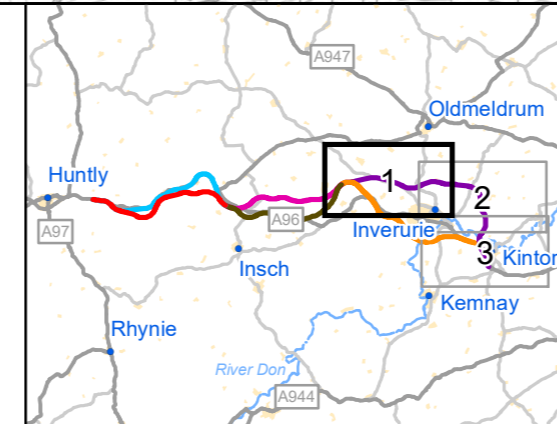


Route Option	Faults and Rock Segments	Bedrock Geology
Violet	Fault, Inferred	ABDN-HSPS - Aberdeen Formation
Adjoining	Reverse or Thrust Fault	ABDN-PSSP - Aberdeen Formation
500m Buffer Area	Slide, Inferred	BENN-PEG - Bennachie Pluton
		INSLZ-TROCT - Inch Pluton, Lower Zone
		INSMZ-NGBN - Inch Pluton, Middle Zone
		NEGRA-MCGNA - North-East Grampian Granitic Suite (Ordovician)
		NEGRA-PEG - North-East Grampian Granitic Suite (Ordovician)
		SDCAD-FELSP - North Britain Siluro-Devonian Calc-Alkaline Dyke Suite



ASS DUALLING
EAST OF HUNTLY TO ABERDEEN

TRANSPORT SCOTLAND

Amey Arup

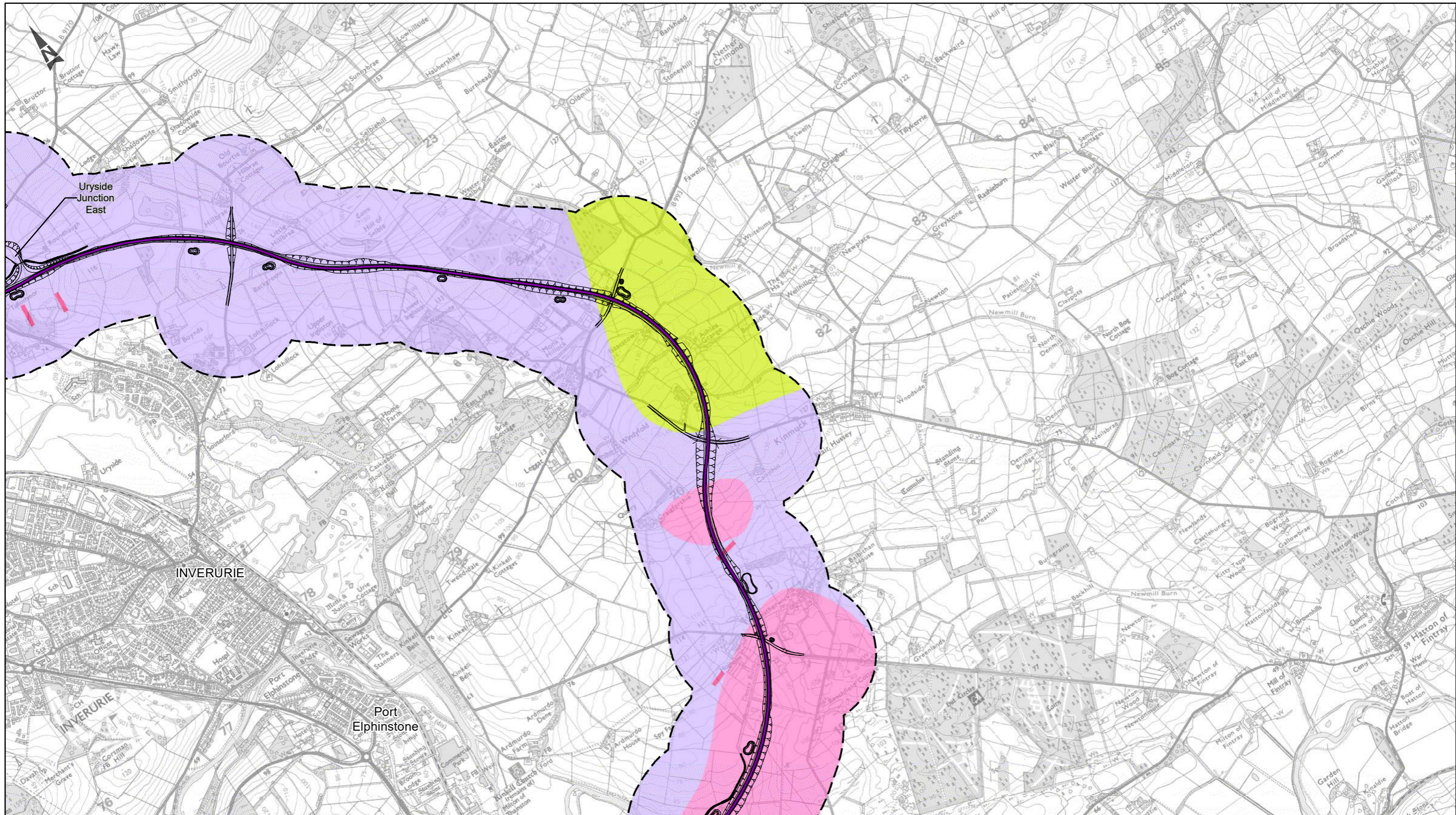
C01	First Issue				
	LPAG	MMAT	ALOW	FMAX	GMAC
	18/03/20	18/03/20	25/03/20	03/04/20	03/12/20
Revision	Created	Checked	Reviewed	Approved	Authorised

Kilometres

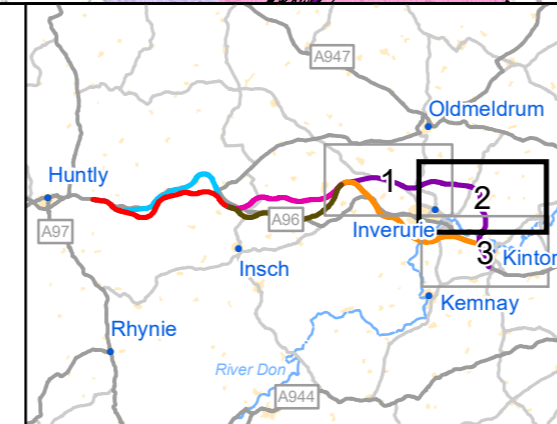
Scale @ A3: 1:25,000 | Project Ref. No. A96PEA | Stage: Stage 2

© Crown copyright and database right (2020). All rights reserved. OS 100046668.
© Scottish Environment Protection Agency and database right (2020).
Reproduced with the permission of the British Geological Survey ©UKRI. All rights Reserved

Project Name A96 Dualling East of Huntly to Aberdeen			
Map Title Figure 7.13 Solid Geology Violet Route Option Sheet 1 of 3			
Map Number Project A96PEA	Originator AMAR	Volume EGT	
Location SWI		MP - CE - 000030	
Suitability A		Description Approved for Stage Complete	
Revision C01			



Route Option	Faults and Rock Segments	Bedrock Geology
Violet	Fault, Inferred	ABDN-PESP - Aberdeen
Adjoining	Reverse or Thrust Fault	ABDN-PSSP - Aberdeen
500m Buffer Area	Slide, Inferred	BENN-PEG - Bennachie Pluton
		KEMN-GNMBF - Kemnay Pluton
		SDCAD-FELSP - North Britain Siluro-Devonian Calc-Alkaline Dyke Suite



East of Huntly to Aberdeen

TRANSPORT SCOTLAND

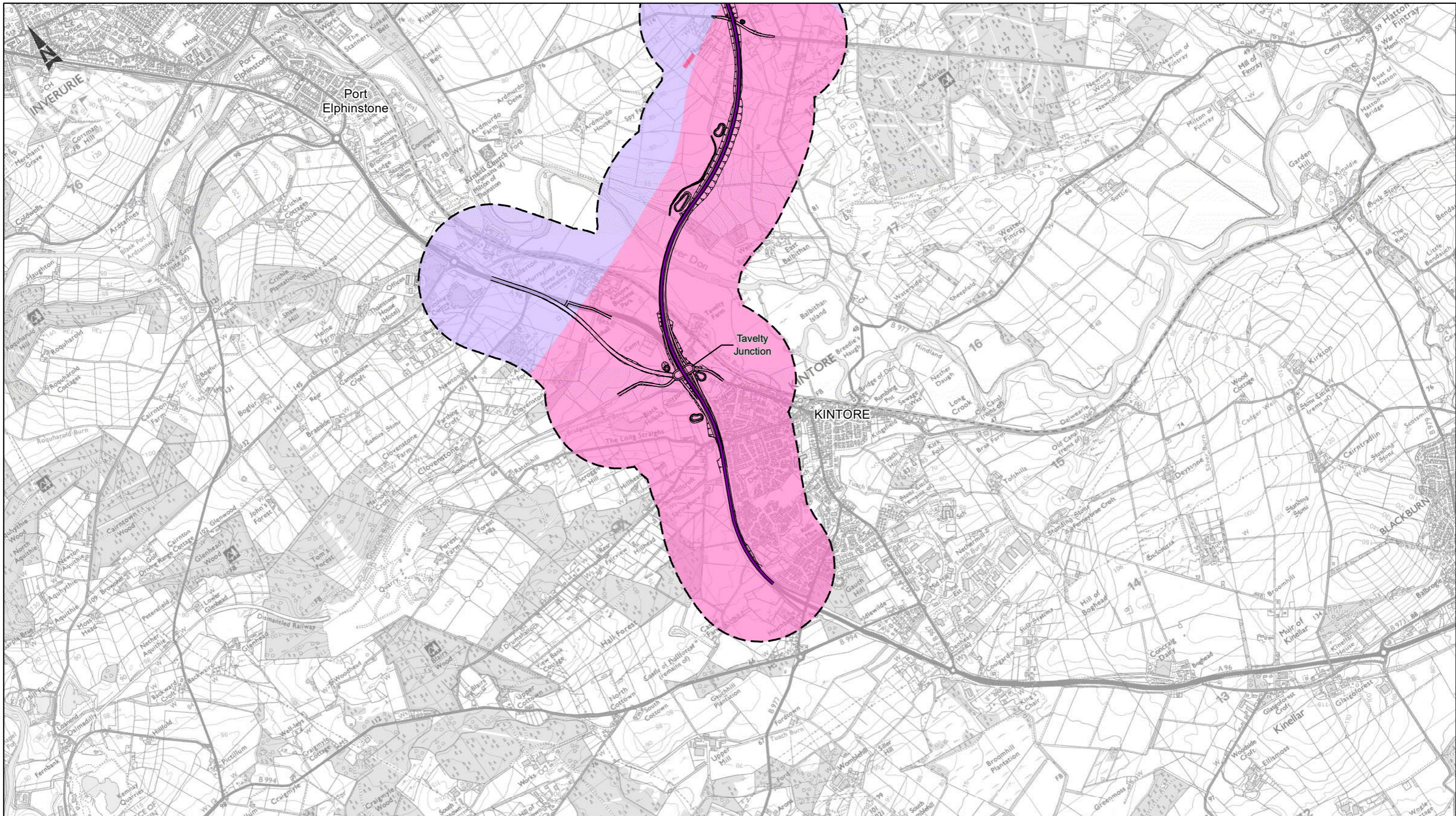
C01	First Issue				
	LPAG	MMAT	ALOW	FMAX	GMAC
	18/03/20	18/03/20	25/03/20	03/04/20	03/12/20
Revision	Created	Checked	Reviewed	Approved	Authorised

Kilometres

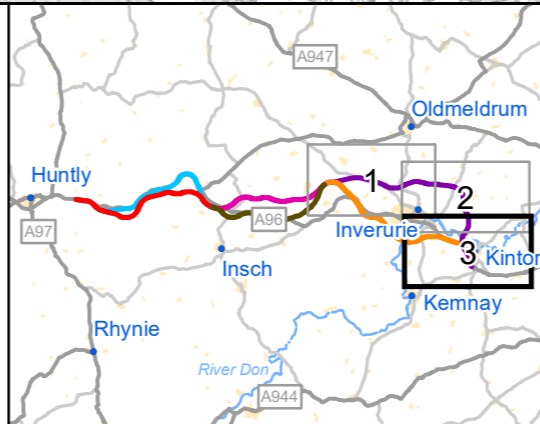
Scale @ A3: 1:25,000 | Project Ref. No. A96PEA | Stage: Stage 2

© Crown copyright and database right (2020). All rights reserved. OS 100046668.
© Scottish Environment Protection Agency and database right (2020).
Reproduced with the permission of the British Geological Survey ©UKRI. All rights Reserved

Project Name A96 Dualling East of Huntly to Aberdeen			
Map Title Figure 7.14 Solid Geology Violet Route Option Sheet 2 of 3			
Map Number Project A96PEA	Originator - AMAR	Volume - EGT	
SWI Location	- Type	MP - CE - 000031 Role	Number Revision
Suitability A	Suitability Description Approved for Stage Complete		C01



Route Option	Faults and Rock Segments	Bedrock Geology
Violet	Fault, Inferred	ABDN-PSSP - Aberdeen Formation
Adjoining	Reverse or Thrust Fault	KEMN-GNMBF - Kemnay Pluton
500m Buffer Area	Slide, Inferred	SDCAD-FELSP - North Britain Siluro-Devonian Calc-Alkaline Dyke Suite

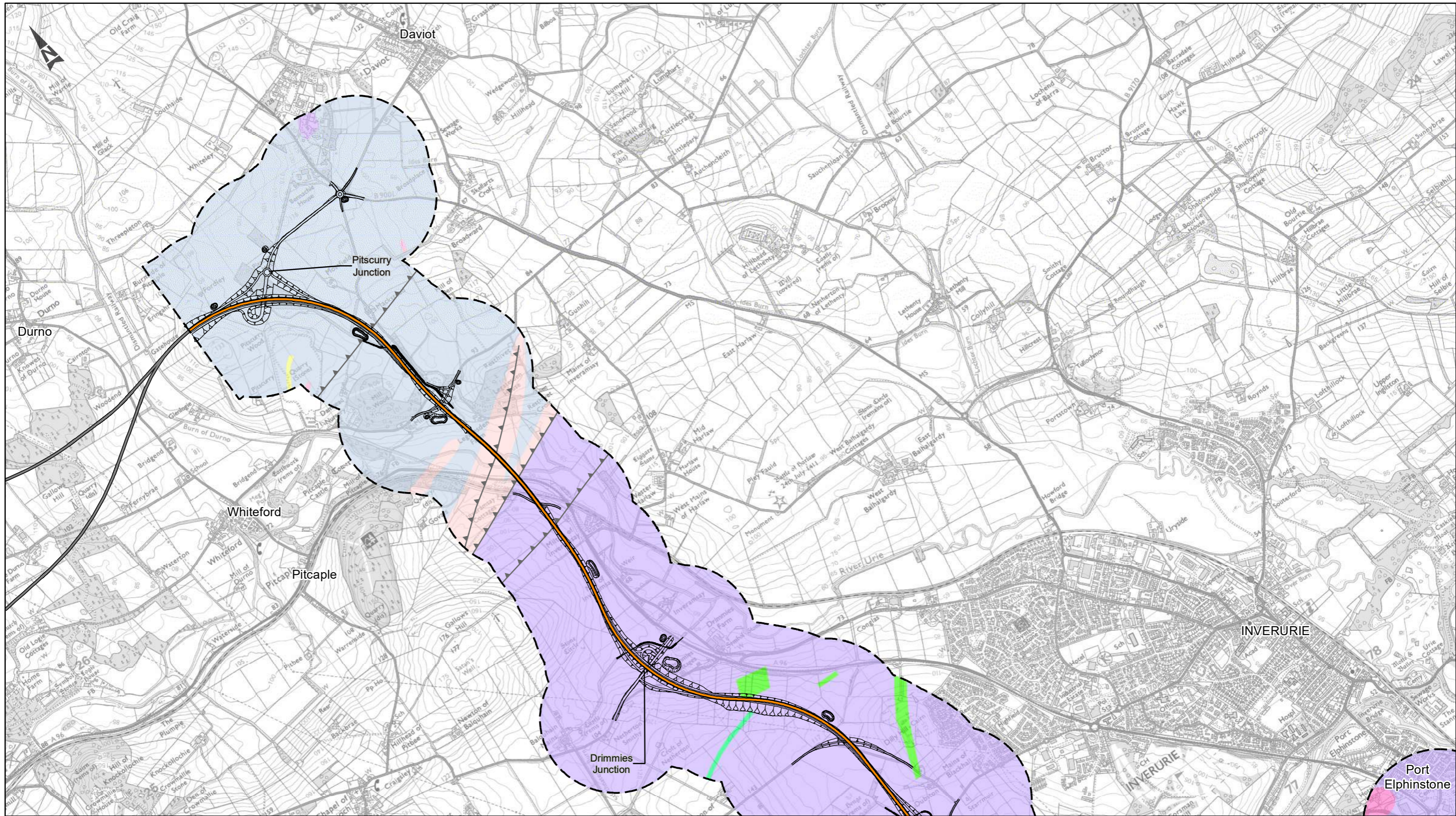


C01	First Issue				
	LPAG	MMAT	ALOW	FMAX	GMAC
Revision	Created	Checked	Reviewed	Approved	Authorised
	18/03/20	18/03/20	25/03/20	03/04/20	03/12/20

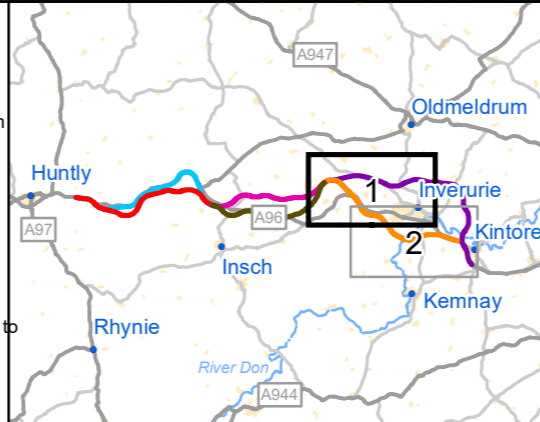
Scale @ A3: 1:25,000 | Project Ref. No. A96PEA | Stage: Stage 2




© Crown copyright and database right (2020). All rights reserved. OS 100046668.
© Scottish Environment Protection Agency and database right (2020).
Reproduced with the permission of the British Geological Survey ©UKRI. All rights Reserved

Project Name A96 Dualling East of Huntly to Aberdeen			
Map Title Figure 7.15 Solid Geology Violet Route Option Sheet 3 of 3			
Map Number Project	Originator	Volume	
A96PEA	AMAR	EGT	
SWI	MP	CE	000032
Location	Type	Role	Number
Suitability A	Suitability Description Approved for Stage Complete		Revision C01

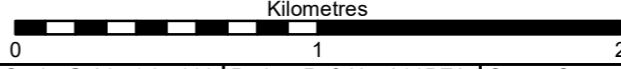


Route Option	Faults and Rock Segments	Bedrock Geology
Orange	- - - Fault, Inferred	ABDN-HSPS - Aberdeen
Adjoining	▲ Reverse or Thrust Fault	ABDN-PSSP - Aberdeen
500m Buffer	— Slide, Inferred	CSTD-MCQGB - Central Scotland Late Carboniferous Tholeiitic Dyke Swarm
		INSMZ-NGBN - Inch Pluton, Middle Zone
		INSUZ-OLGBFE - Inch Pluton, Upper Zone
		KEMN-GNMBF - Kemnay Pluton
		NEGRA-MCGNA - North-East Grampian Granitic Suite (Ordovician)
		NEGRA-PEG - North-East Grampian Granitic Suite (Ordovician)
		UMIGP-AMHS - Unnamed Metamorphosed Igneous Rocks, Pre-Caledonian to Caledonian



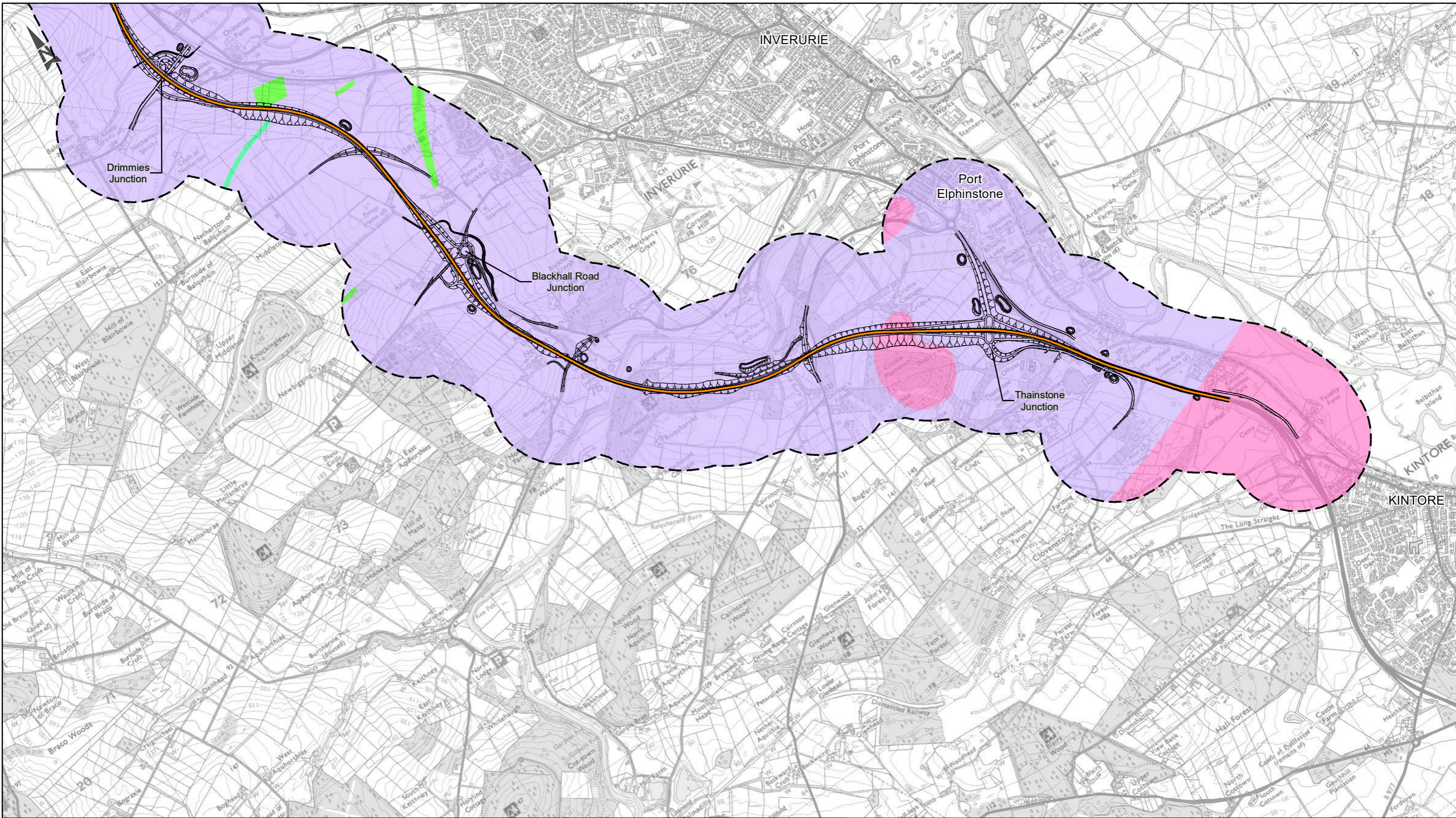
C01	First Issue				
	LPAG	MMAT	ALOW	FMAX	GMAC
	18/03/20	18/03/20	25/03/20	03/04/20	03/12/20
Revision	Created	Checked	Reviewed	Approved	Authorised



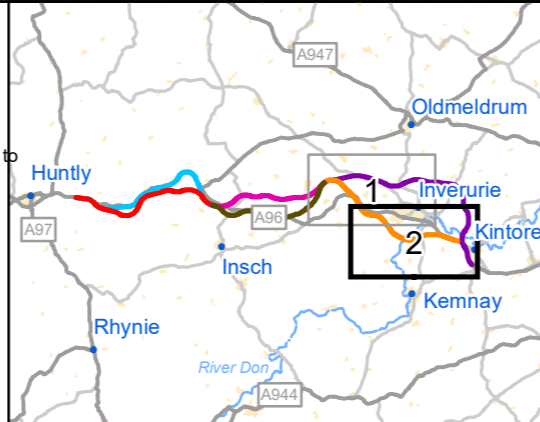
Scale @ A3: 1:25,000 | Project Ref. No. A96PEA | Stage: Stage 2

© Crown copyright and database right (2020). All rights reserved. OS 100046668.
© Scottish Environment Protection Agency and database right (2020).
Reproduced with the permission of the British Geological Survey ©UKRI. All rights Reserved

Project Name A96 Dualling East of Huntly to Aberdeen			
Map Title Figure 7.16 Solid Geology Orange Route Option Sheet 1 of 2			
Map Number A96PEA	Project SWI	Originator AMAR	Volume EGT
Location Aberdeen		Type MP	Role CE
Suitability A		Description Approved for Stage Complete	Revision C01



Route Option	Faults and Rock Segments	Bedrock Geology
Orange line	- - - Fault, Inferred	ABDN-PSSP - Aberdeen
Black line	▲ Reverse or Thrust Fault	CSTD-MCQGB - Central Scotland Late Carboniferous Tholeiitic Dyke
Dashed line	— Slide, Inferred	KEMN-GNMBF - Kemnay Pluton
Dashed line		UMIGP-AMHS - Unnamed Metamorphosed Igneous Rocks, Pre-Caledonian to Caledonian



ASS DUALLING
EAST OF HUNTLY TO ABERDEEN

TRANSPORT SCOTLAND

Amey Arup

C01	First Issue				
	LPAG	MMAT	ALOW	FMAX	GMAC
	18/03/20	18/03/20	25/03/20	03/04/20	03/12/20
Revision	Created	Checked	Reviewed	Approved	Authorised

Kilometres

Scale @ A3: 1:25,000 | Project Ref. No. A96PEA | Stage: Stage 2

© Crown copyright and database right (2020). All rights reserved. OS 100046668.
© Scottish Environment Protection Agency and database right (2020).
Reproduced with the permission of the British Geological Survey ©UKRI. All rights Reserved

Project Name			
A96 Dualling East of Huntly to Aberdeen			
Map Title			
Figure 7.17			
Solid Geology			
Orange Route Option			
Sheet 2 of 2			
Map Number	Project	Originator	Volume
A96PEA	-	AMAR	-
SWI	-	MP	CE
Location	-	Type	Role
			Number
Suitability	Suitability Description		Revision
A	Approved for Stage Complete		C01