

Route Option

- Violet
- Adjoining
- 500m Buffer Area

Constraints

- Active Mineral Site (BGS recorded site)

Current & Historic OS Map Features

- Well, Pump or Spring
- Watercourse
- Marshland
- Quarry or Pit

BGS - Artificial ground

- Infilled Ground
- Made Ground
- Worked Ground

Landmark Information Group - Infilled Ground

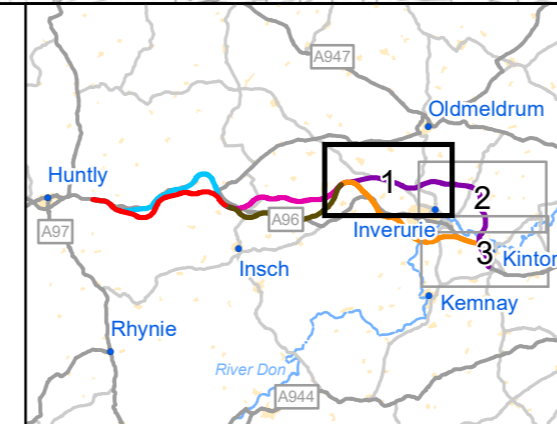
- Potentially infilled land (non-water feature)
- Potentially infilled land (water feature)

Compressible Ground Stability Hazard¹

- High
- Moderate

Landslide Ground Stability Hazard¹

- Moderate



A96 DUALLING

Amey Arup

C01	First Issue	LPAG	ACED	ALOW	FMAX	GMAC
	Created	16/11/20	16/11/20	17/11/20	19/11/20	03/12/20
Revision	Created	Checked	Reviewed	Approved	Authorised	

Kilometres

Scale @ A3: 1:25,000 | Project Ref. No. A96PEA | Stage: Stage 2

© Crown copyright and database right (2020). All rights reserved. OS 100046668.
 © Scottish Environment Protection Agency and database right (2020).
 © Crown Copyright and Landmark Information Group Limited (2020). All rights reserved.
 Reproduced with the permission of the British Geological Survey ©UKRI. All rights Reserved.

Project Name
A96 Dualling East of Huntly to Aberdeen

Map Title
Figure 7.18 Geotechnical Constraints Violet Route Option Sheet 1 of 3

Map Number	Project	Originator	Volume
A96PEA	-	AMAR	- EGT
SWI	-	MP	- CE - 000035
Location		Type	Role

Suitability	Suitability Description	Revision
A	Approved for Stage Complete	C01

Note:
¹ Due to extensive coverage and overlay of Geotechnical Hazard Layers, only areas of Moderate and High hazard are indicated. Areas of lower hazard are described in Vol 1 Part 1 of the report and included in the GIS database.



Route Option

- Violet
- Adjoining
- 500m Buffer Area

Constraints

- Active Mineral Site (BGS recorded site)

Current & Historic OS Map Features

- Well, Pump or Spring
- Watercourse
- Marshland
- Quarry or Pit

BGS - Artificial ground

- Infilled Ground
- Made Ground
- Worked Ground

Landmark Information Group - Infilled Ground

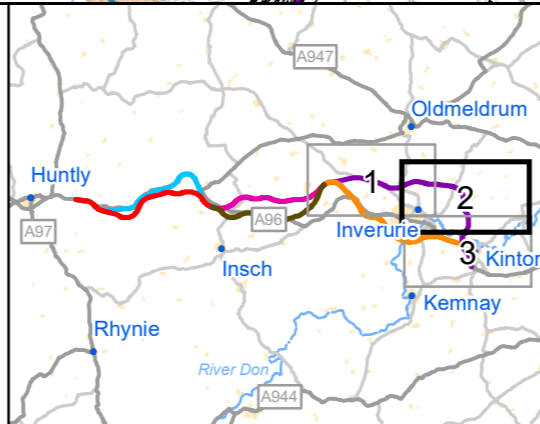
- Potentially infilled land (non-water feature)
- Potentially infilled land (water feature)

Compressible Ground Stability Hazard¹

- High
- Moderate

Landslide Ground Stability Hazard¹

- Moderate



A96 DUALLING EAST OF HUNTLY TO ABERDEEN

Amey Arup

TRANSPORT SCOTLAND

C01	First Issue				
	LPAG	ACED	ALOW	FMAX	GMAC
Revision	Created	Checked	Reviewed	Approved	Authorised
	16/11/20	16/11/20	17/11/20	19/11/20	03/12/20

Kilometres

Scale @ A3: 1:25,000 | Project Ref. No. A96PEA | Stage: Stage 2

© Crown copyright and database right (2020). All rights reserved. OS 100046668.
 © Scottish Environment Protection Agency and database right (2020).
 © Crown Copyright and Landmark Information Group Limited (2020). All rights reserved.
 Reproduced with the permission of the British Geological Survey ©UKRI. All rights Reserved.

Project Name
A96 Dualling East of Huntly to Aberdeen

Map Title
Figure 7.19

Geotechnical Constraints

Violet Route Option

Sheet 2 of 3

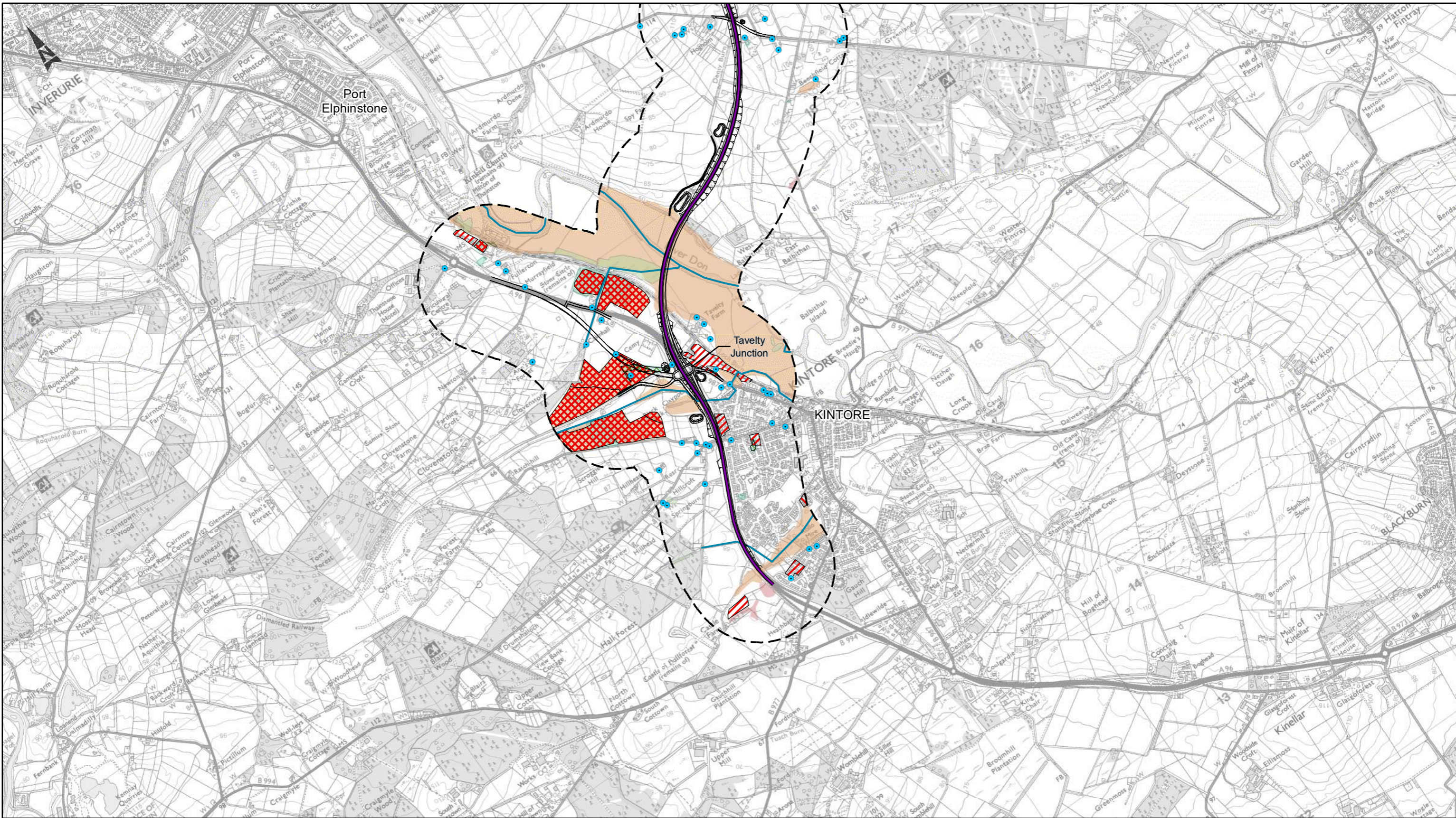
Map Number	Project	Originator	Volume
A96PEA	-	AMAR	-
SWI	-	MP	-
Location	-	Type	Role
			Number

Suitability
A

Suitability Description
Approved for Stage Complete

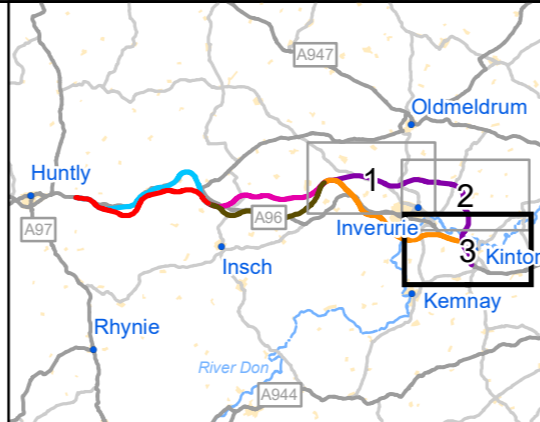
Revision
C01

Note:
¹ Due to extensive coverage and overlay of Geotechnical Hazard Layers, only areas of Moderate and High hazard are indicated. Areas of lower hazard are described in Vol 1 Part 1 of the report and included in the GIS database.



- Route Option**
- Violet
 - Adjoining
 - 500m Buffer Area
- Constraints**
- Active Mineral Site (BGS recorded site)
- Current & Historic OS Map Features**
- Well, Pump or Spring
 - Watercourse
 - Marshland
 - Quarry or Pit
- BGS - Artificial ground**
- Infilled Ground
 - Made Ground
 - Worked Ground

- Landmark Information Group - Infilled Ground**
- Potentially infilled land (non-water feature)
 - Potentially infilled land (water feature)
- Compressible Ground Stability Hazard¹**
- High
 - Moderate
- Landslide Ground Stability Hazard¹**
- Moderate



ASS DUALLING EAST OF HUNTY TO ABERDEEN

Amey Arup

TRANSPORT SCOTLAND

C01	First Issue	LPAG	ACED	ALOW	FMAX	GMAC
		16/11/20	16/11/20	17/11/20	19/11/20	03/12/20
Revision	Created	Checked	Reviewed	Approved	Authorised	

Kilometres

0 1 2

Scale @ A3: 1:25,000 | Project Ref. No. A96PEA | Stage: Stage 2

© Crown copyright and database right (2020). All rights reserved. OS 100046668.
 © Scottish Environment Protection Agency and database right (2020).
 © Crown Copyright and Landmark Information Group Limited (2020). All rights reserved.
 Reproduced with the permission of the British Geological Survey ©UKRI.
 All rights Reserved

Project Name
A96 Dualling East of Huntly to Aberdeen

Map Title
Figure 7.20 Geotechnical Constraints Violet Route Option Sheet 3 of 3

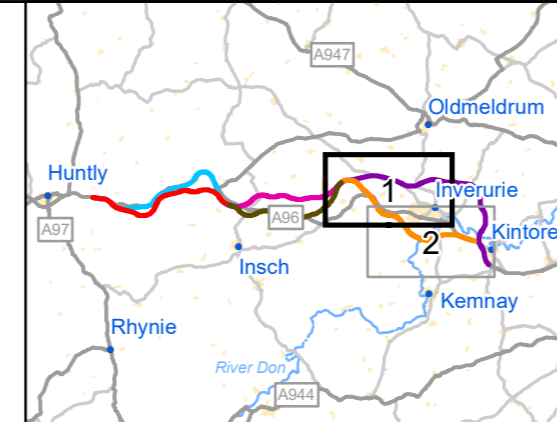
Map Number	Project	Originator	Volume
A96PEA	-	AMAR	-
SWI	-	MP	-
Location	-	CE	-
		Type	Role
			Number
Suitability	Suitability Description		Revision
A	Approved for Stage Complete		C01

Note:
¹ Due to extensive coverage and overlay of Geotechnical Hazard Layers, only areas of Moderate and High hazard are indicated. Areas of lower hazard are described in Vol 1 Part 1 of the report and included in the GIS database.



- Route Option**
- Orange
 - Adjoining
 - 500m Buffer Area
- Constraints**
- Active Mineral Site (BGS recorded site)
- Current & Historic OS Map Features**
- Well, Pump or Spring
 - Watercourse
 - Marshland
 - Quarry or Pit
- BGS - Artificial ground**
- Infilled Ground
 - Made Ground
 - Worked Ground

- Landmark Information Group - Infilled Ground**
- Potentially infilled land (non-water feature)
 - Potentially infilled land (water feature)
- Compressible Ground Stability Hazard¹**
- High
 - Moderate
- Landslide Ground Stability Hazard¹**
- Moderate



A96 DUALLING EAST OF HUNTLY TO ABERDEEN

TRANSPORT SCOTLAND

Amey Arup

C01	First Issue				
	LPAG	ACED	ALOW	FMAX	GMAC
	16/11/20	16/11/20	17/11/20	19/11/20	03/12/20
Revision	Created	Checked	Reviewed	Approved	Authorised

Kilometres

0 1 2

Scale @ A3: 1:25,000 | Project Ref. No. A96PEA | Stage: Stage 2

© Crown copyright and database right (2020). All rights reserved. OS 100046668.
 © Scottish Environment Protection Agency and database right (2020).
 © Crown Copyright and Landmark Information Group Limited (2020). All rights reserved.
 Reproduced with the permission of the British Geological Survey ©UKRI.
 All rights Reserved

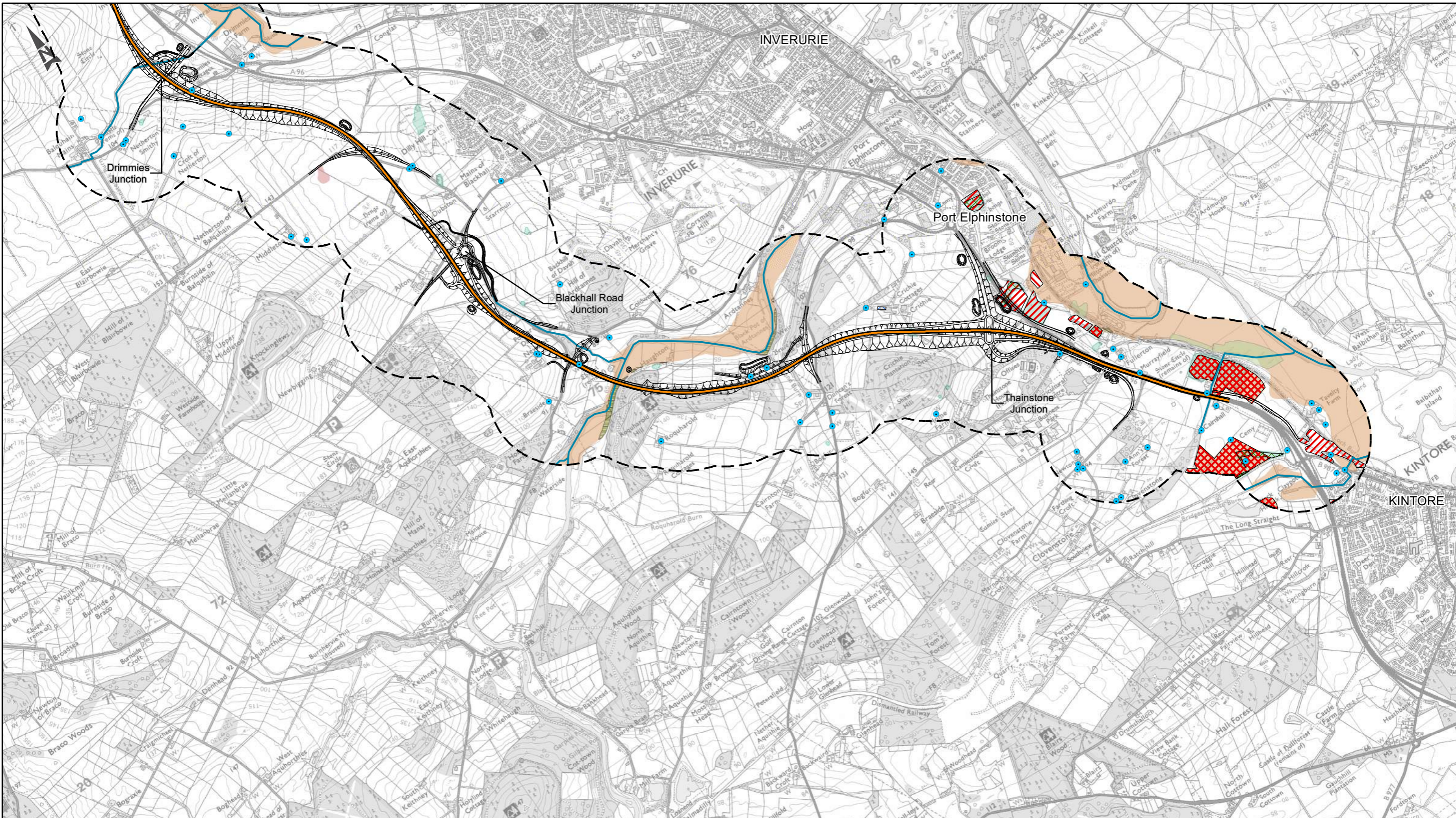
Project Name
A96 Dualling East of Huntly to Aberdeen

Map Title
Figure 7.21 Geotechnical Constraints Orange Route Option Sheet 1 of 2

Map Number	Project	Originator	Volume
A96PEA	-	AMAR	-
SWI	-	MP	-
Location		Type	Role
			Number

Suitability: **A** | Suitability Description: **Approved for Stage Complete** | Revision: **C01**

Note:
¹ Due to extensive coverage and overlay of Geotechnical Hazard Layers, only areas of Moderate and High hazard are indicated. Areas of lower hazard are described in Vol 1 Part 1 of the report and included in the GIS database.



Route Option

- Orange
- Adjoining
- 500m Buffer Area

Constraints

- Active Mineral Site (BGS recorded site)

Current & Historic OS Map Features

- Well, Pump or Spring
- Watercourse
- Marshland
- Quarry or Pit

BGS - Artificial ground

- Infilled Ground
- Made Ground
- Worked Ground

Landmark Information Group - Infilled Ground

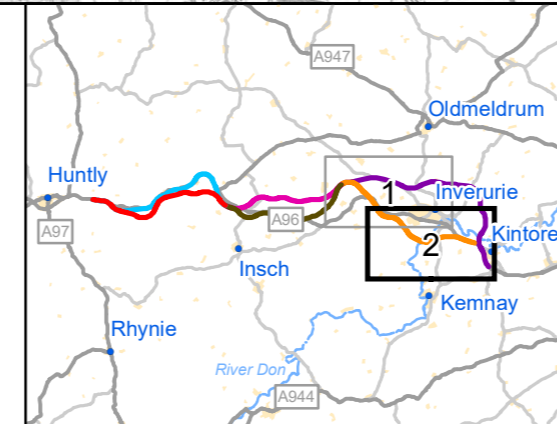
- Potentially infilled land (non-water feature)
- Potentially infilled land (water feature)

Compressible Ground Stability Hazard¹

- High
- Moderate

Landslide Ground Stability Hazard¹

- Moderate



ASS DUALLING EAST OF HUNTLY TO ABERDEEN

Transport Scotland

Amey Arup

C01	First Issue	LPAG	ACED	ALOW	FMAX	GMAC
	Created	16/11/20	16/11/20	17/11/20	19/11/20	03/12/20
Revision	Created	Checked	Reviewed	Approved	Authorised	

0 1 2 Kilometres

Scale @ A3: 1:25,000 | Project Ref. No. A96PEA | Stage: Stage 2

© Crown copyright and database right (2020). All rights reserved. OS 100046668.
 © Scottish Environment Protection Agency and database right (2020).
 © Crown Copyright and Landmark Information Group Limited (2020). All rights reserved.
 Reproduced with the permission of the British Geological Survey ©UKRI.
 All rights Reserved

Project Name
A96 Dualling East of Huntly to Aberdeen

Map Title
Figure 7.22

Geotechnical Constraints

Orange Route Option

Sheet 2 of 2

Map Number	Project	Originator	Volume
A96PEA	-	AMAR	-
SWI	-	MP	-
Location	-	CE	-
		Type	Role
			Number

Suitability
A

Suitability Description
Approved for Stage Complete

Revision
C01

Note:
¹ Due to extensive coverage and overlay of Geotechnical Hazard Layers, only areas of Moderate and High hazard are indicated. Areas of lower hazard are described in Vol 1 Part 1 of the report and included in the GIS database.