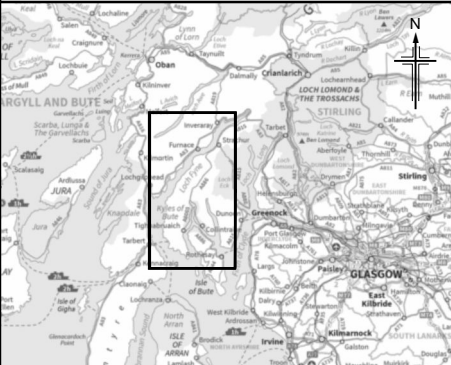
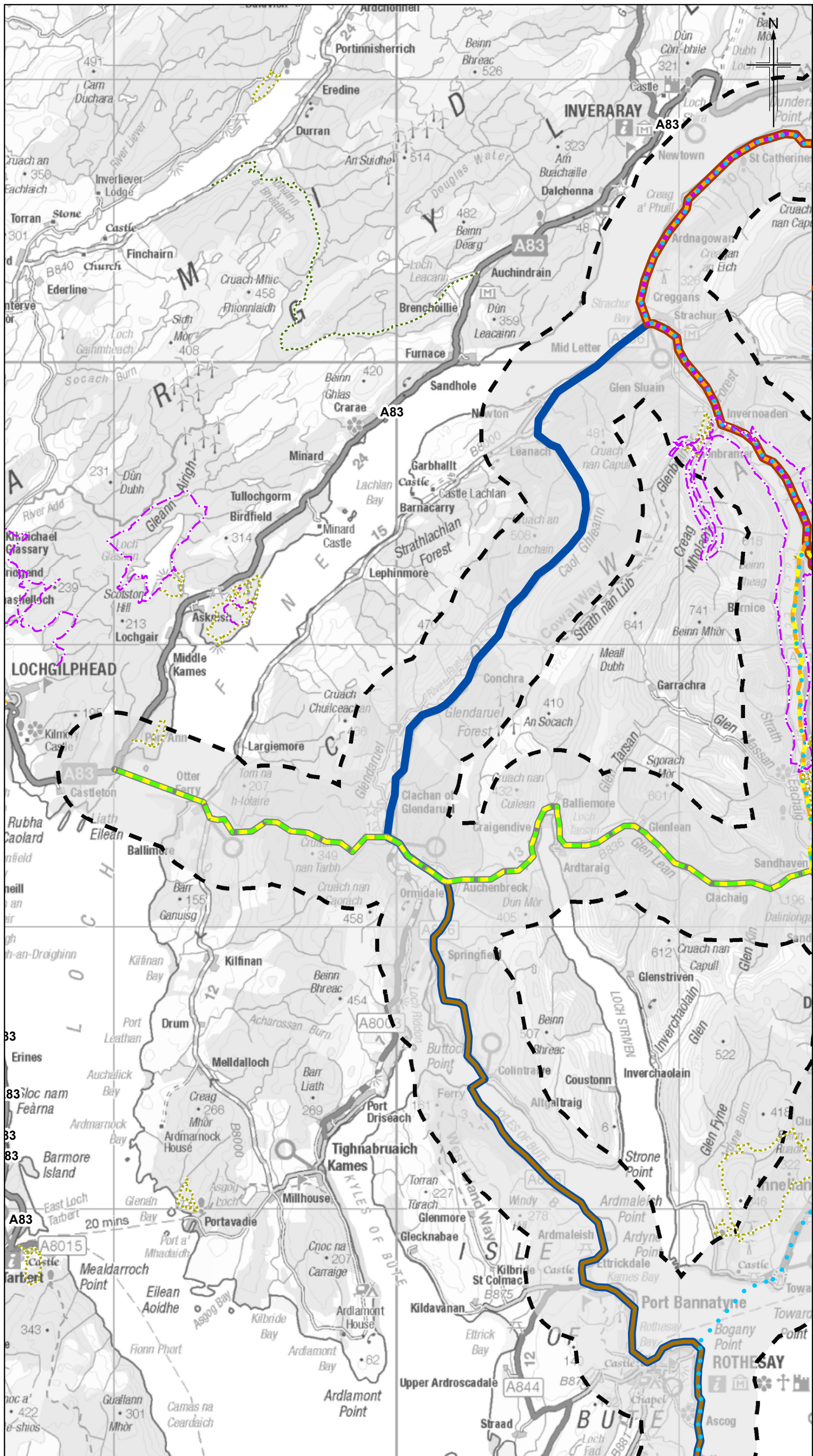


FIGURE 3



- Legend**
- Corridor Option 1
 - Corridor Option 2
 - Corridor Option 3
 - Corridor Option 4
 - Corridor Option 5
 - Corridor Option 6
 - Corridor Option 7
 - Corridor Option 8a
 - Corridor Option 8b
 - Corridor Option 9
 - Corridor Option 10
 - Corridor Option 11
- 2km Route Corridor Study Area
- Walking and Cycling Routes**
- National Cycle Network
 - Forest Recreation Routes
 - Cycling Route
 - Forest Drive Route
 - Walking Route

C02	DEC 2020	Scoping Report Publication	LM	SI	PS	DR
Rev.	Rev. Date	Purpose of revision	Orig/Dwn	Checked	Rev'd	Appr'd

Jacobs
 95 Botwell Street, Glasgow, G2 7HX, UK
 Tel: +44(0)141 243 8000
 www.jacobs.com

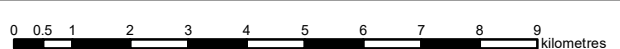
Client: **TRANSPORT SCOTLAND**
 COMHAIL ALBA

Project: **ACCESS TO ARGYLL AND BUTE (A83)**

Drawing title: **SEA SCOPING REPORT ENVIRONMENTAL CONSTRAINTS AND OPPORTUNITIES POPULATION AND HUMAN HEALTH**

Sheet 2 of 3

Drawing Status	A - Approved As Stage Complete	
Scale	1:130,000 @ A3	DO NOT SCALE
Jacobs No.	B2356701	
BIM No.		
Drawing number	A83AAB-JAC-EGN-XX-DR-LE-0014	Rev C02



© Copyright 2020 Jacobs U.K. Limited. The concepts and information contained in this document are the property of Jacobs. Use or copying of this document in whole or in part without the written permission of Jacobs constitutes an infringement of copyright. Limitation: This drawing has been prepared on behalf of, and for the exclusive use of Jacobs' Client, and is subject to, and issued in accordance with, the provisions of the contract between Jacobs and the Client. Jacobs accepts no liability or responsibility whatsoever for, or in respect of, any use of, or reliance upon, this drawing by any third party.