

- Legend**
- Corridor 4 extents
 - Corridor 5 extents
 - Corridor 4 & 5 extents
 - Corridor 4 – approximate centre of corridor
 - Corridor 5 – approximate centre of corridor
 - Corridor 4 & 5 – approximate centre of corridor
 - A Listed Building
 - Great Trails
 - Core Paths
 - Scheduled Monument
 - Conservation Area
 - Garden and Designed Landscape
 - Special Protection Area (SPA)
 - Special Area of Conservation (SAC)
 - Wetlands of International Importance (Ramsar Sites)
 - Ancient Woodland Inventory
 - Site of Special Scientific Interest (SSSI)
 - Marine Protected Area (MPA)
 - National Scenic Area
 - Loch Lomond and the Trossachs National Park
 - Flood Mapping Coastal Extents – Medium Likelihood
 - Flood Mapping River Extents – Medium Likelihood

Rev.	Rev. Date	Purpose of revision	TS	RC	SB	DR
P01	12/02/2021	For information				

Jacobs AECOM

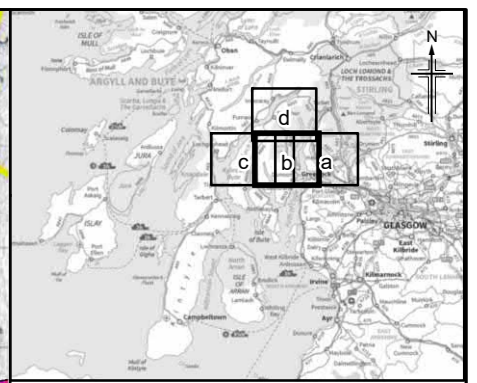
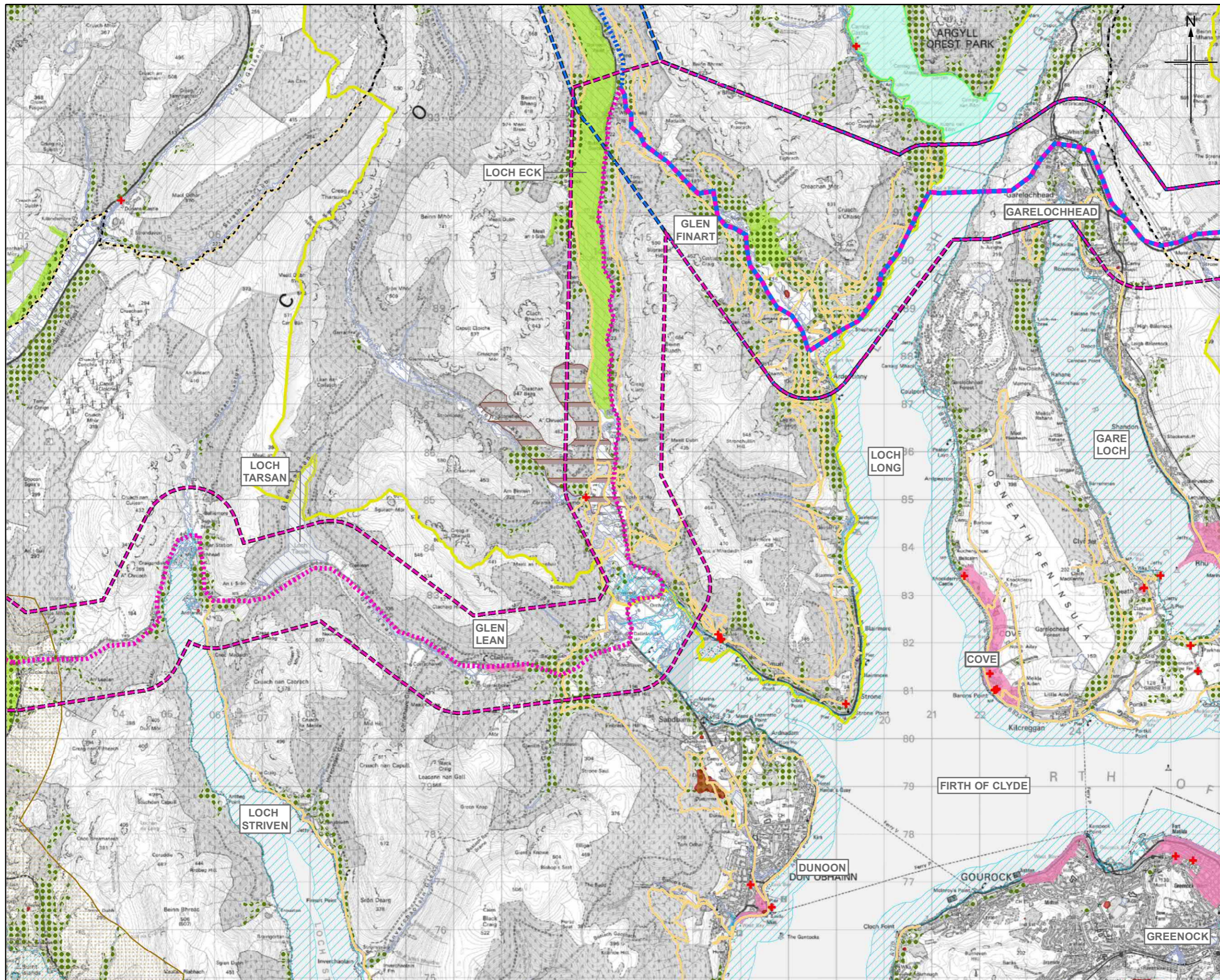


Client
Project
Drawing title
**FIGURE C.2A
PRELIMINARY ASSESSMENT
CORRIDORS 4, 5**

Drawing Status	FOR INFORMATION	Suitability	S2
Scale	1:75,000 @ A3	DO NOT SCALE	
Jacobs No.	B2356701		
Client No.			
Drawing number	A83AAB-JAC-GEN-XX XX-DR-CX-9001	Rev	P01

© Copyright 2021 Jacobs UK Ltd and AECOM Limited. The concepts and information contained in this document are the property of Jacobs and AECOM. Use or copying of this document in whole or in part without the written permission of Jacobs and AECOM constitutes an infringement of copyright.
Limitation: This document has been prepared on behalf of, and for the exclusive use of Jacobs and AECOM client, and is subject to, and issued in accordance with, the provisions of the contract between Jacobs, AECOM and the client. Jacobs and AECOM accepts no liability or responsibility whatsoever for, or in respect of, any use of, or reliance upon, this document by any third party.





- Legend**
- Corridor 4 extents
 - Corridor 5 extents
 - Corridor 4 & 5 extents
 - Corridor 4 – approximate centre of corridor
 - Corridor 5 – approximate centre of corridor
 - Corridor 4 & 5 – approximate centre of corridor
 - A Listed Building
 - Great Trails
 - Core Paths
 - Scheduled Monument
 - Conservation Area
 - Garden and Designed Landscape
 - Special Protection Area (SPA)
 - Special Area of Conservation (SAC)
 - Wetlands of International Importance (Ramsar Sites)
 - Ancient Woodland Inventory
 - Site of Special Scientific Interest (SSSI)
 - Marine Protected Area (MPA)
 - National Scenic Area
 - Loch Lomond and the Trossachs National Park
 - Flood Mapping Coastal Extents – Medium Likelihood
 - Flood Mapping River Extents – Medium Likelihood

Rev.	12/02/2021	For Information	TS	RC	SB	DR
Rev.	Rev. Date	Purpose of revision	Orig/Dwn	Checkd	Rev'd	Apprv'd

JACOBS AECOM



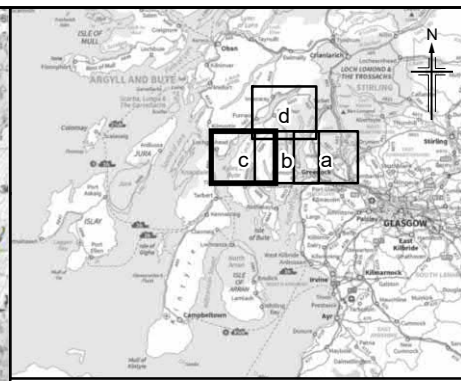
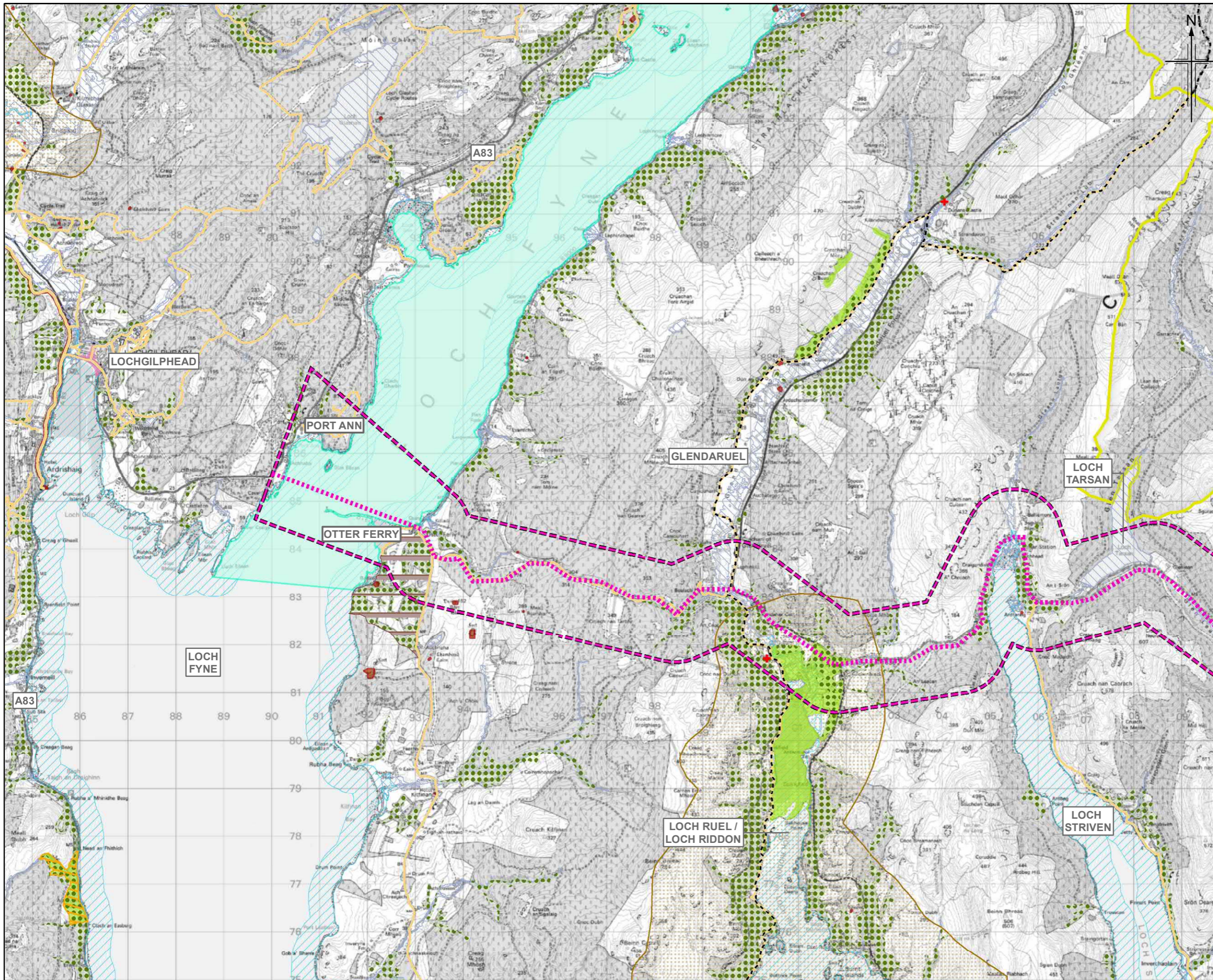
Drawing title
FIGURE C.2B
PRELIMINARY ASSESSMENT
CORRIDORS 4, 5

Sheet 02 of 04

Drawing Status	FOR INFORMATION	Suitability	S2
Scale	1:75,000 @ A3	DO NOT SCALE	
JACOBS No.	B2356701		
Client No.			
Drawing number	A83AAB-JAC-GEN-XX XX-DR-CX-9001	Rev	P01



Limitation: This document has been prepared on behalf of, and for the exclusive use of Jacobs and AECOM client, and is subject to, and issued in accordance with, the provisions of the contract between Jacobs, AECOM and the client. Jacobs and AECOM accepts no liability or responsibility whatsoever for, or in respect of, any use of, or reliance upon, this document by any third party.



- Legend**
- Corridor 4 extents
 - Corridor 5 extents
 - Corridor 4 & 5 extents
 - Corridor 4 – approximate centre of corridor
 - Corridor 5 – approximate centre of corridor
 - Corridor 4 & 5 – approximate centre of corridor
 - A Listed Building
 - Great Trails
 - Core Paths
 - Scheduled Monument
 - Conservation Area
 - Garden and Designed Landscape
 - Special Protection Area (SPA)
 - Special Area of Conservation (SAC)
 - Wetlands of International Importance (Ramsar Sites)
 - Ancient Woodland Inventory
 - Site of Special Scientific Interest (SSSI)
 - Marine Protected Area (MPA)
 - National Scenic Area
 - Loch Lomond and the Trossachs National Park
 - Flood Mapping Coastal Extents – Medium Likelihood
 - Flood Mapping River Extents – Medium Likelihood

Rev.	Date	Purpose of revision	TS	RC	SB	DR
P01	12/02/2021	For information				

Jacobs AECOM

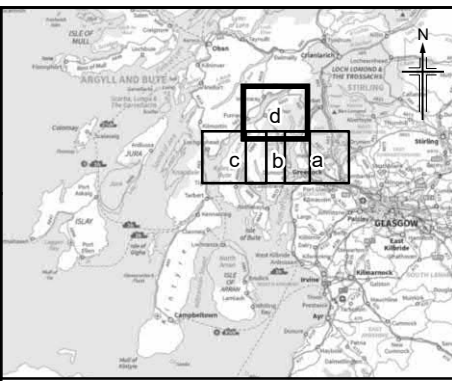
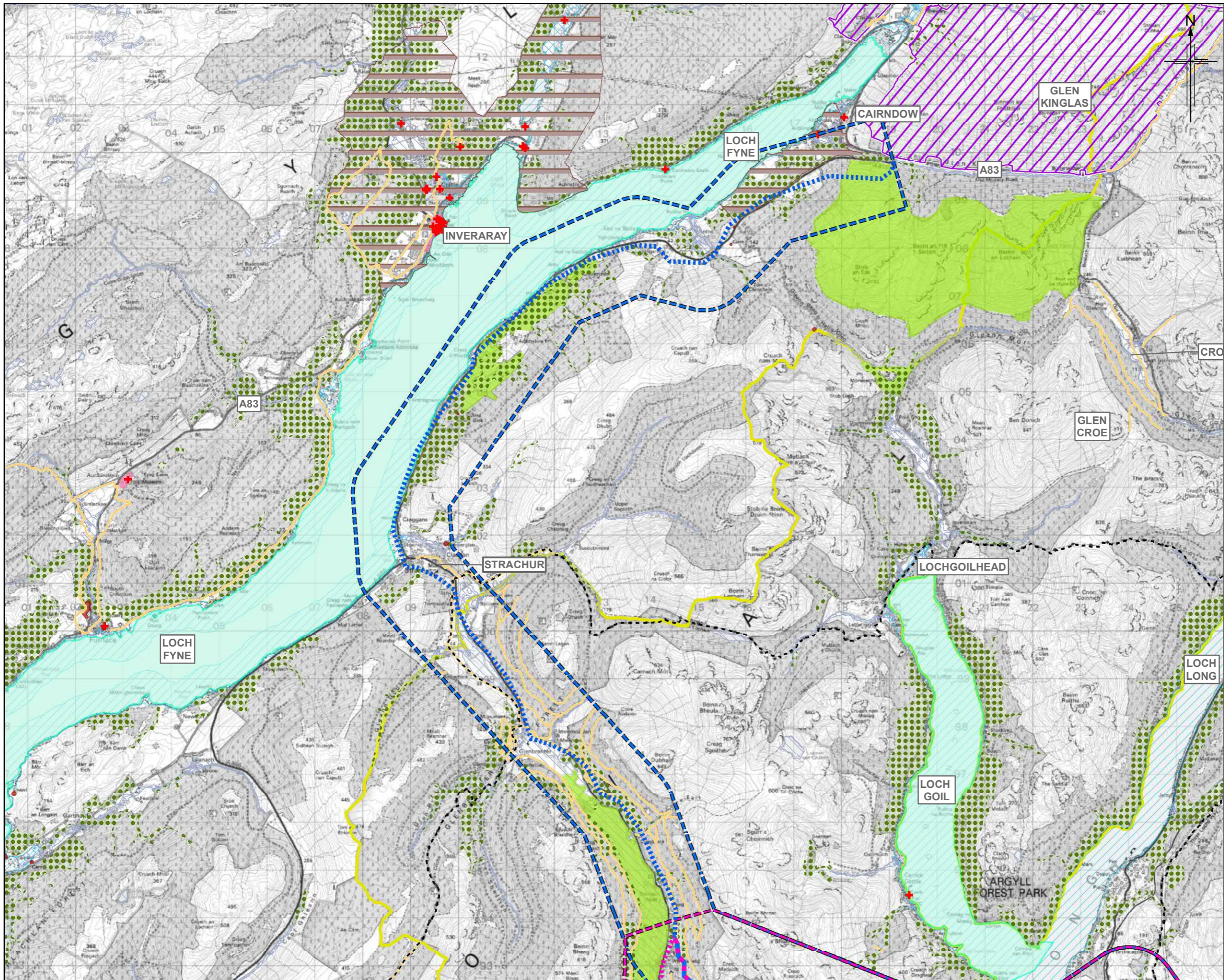


FIGURE C.2C
PRELIMINARY ASSESSMENT
CORRIDORS 4, 5

Sheet 03 of 04

Drawing Status	FOR INFORMATION	Suitability	S2
Scale	1:75,000 @ A3	DO NOT SCALE	
Jacobs No.	B2356701		
Client No.			
Drawing number	A83AAB-JAC-GEN-XX XX-DR-CX-9001	Rev	P01





Legend

- Corridor 4 extents
- Corridor 5 extents
- Corridor 4 & 5 extents
- Corridor 4 – approximate centre of corridor
- Corridor 5 – approximate centre of corridor
- Corridor 4 & 5 – approximate centre of corridor
- A Listed Building
- Great Trails
- Core Paths
- Scheduled Monument
- Conservation Area
- Garden and Designed Landscape
- Special Protection Area (SPA)
- Special Area of Conservation (SAC)
- Wetlands of International Importance (Ramsar Sites)
- Ancient Woodland Inventory
- Site of Special Scientific Interest (SSSI)
- Marine Protected Area (MPA)
- National Scenic Area
- Loch Lomond and the Trossachs National Park
- Flood Mapping Coastal Extents – Medium Likelihood
- Flood Mapping River Extents – Medium Likelihood

Rev.	Rev. Date	For Information Purpose of revision	TS	RC	SB	DR
P01	12/02/2021					
Rev.	Rev. Date	Purpose of revision	Orig/Dwn	Checkd	Rev'd	Apprv'd

Jacobs AECOM	
Client	
Project	
Drawing title	
FIGURE C.2D PRELIMINARY ASSESSMENT CORRIDORS 4, 5	
Sheet 04 of 04	
Drawing Status	FOR INFORMATION Suitability S2
Scale	1:75,000 @ A3 DO NOT SCALE
Jacobs No.	B2356701
Client No.	
Drawing number	A83AAB-JAC-GEN-XX XX-DR-CX-9001 Rev P01

