

- Legend**
- Corridor 6 extents
  - Corridor 7 extents
  - Corridor 6 & 7 extents
  - Corridor 6 – approximate centre of corridor
  - Corridor 7 – approximate centre of corridor
  - Corridor 6 & 7 – approximate centre of corridor
  - A Listed Building
  - Great Trails
  - Core Paths
  - Scheduled Monument
  - Conservation Area
  - Garden and Designed Landscape
  - Special Protection Area (SPA)
  - Special Area of Conservation (SAC)
  - Wetlands of International Importance (Ramsar Sites)
  - Ancient Woodland Inventory
  - Site of Special Scientific Interest (SSSI)
  - Marine Protected Area (MPA)
  - National Scenic Area
  - Loch Lomond and the Trossachs National Park
  - Flood Mapping Coastal Extents – Medium Likelihood
  - Flood Mapping River Extents – Medium Likelihood

Rev.	Rev. Date	Purpose of revision	TS	RC	SB	DR
P01	12/02/2021	For information				

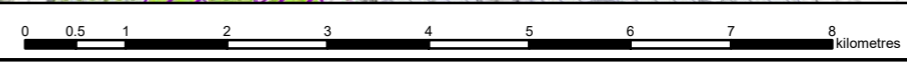
**JACOBS AECOM**

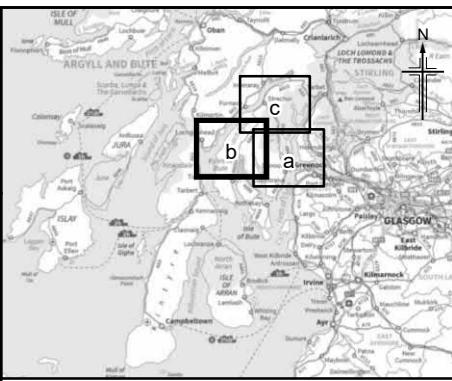
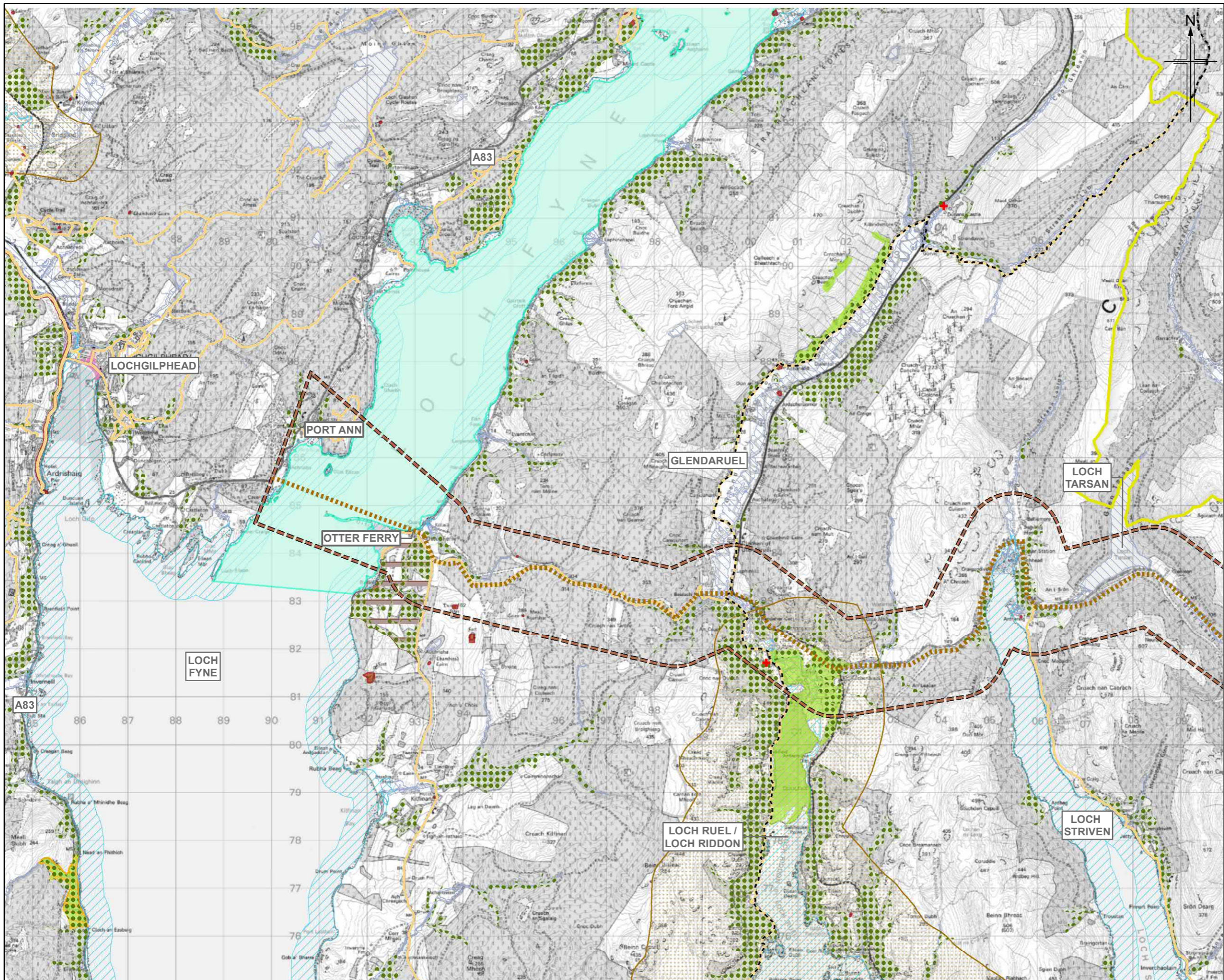


Drawing title  
**FIGURE C.3A  
 PRELIMINARY ASSESSMENT  
 CORRIDORS 6, 7**

Drawing Status	FOR INFORMATION	Suitability	S2
Scale	1:75,000 @ A3	DO NOT SCALE	
JACOBS No.	B2356701		
Client No.			
Drawing number	A83AAB-JAC-GEN-XX XX-DR-CX-9002	Rev	P01

© Copyright 2021 Jacobs UK Ltd and AECOM Limited. The concepts and information contained in this document are the property of Jacobs and AECOM. Use or copying of this document in whole or in part without the written permission of Jacobs and AECOM constitutes an infringement of copyright.  
 Limitation: This document has been prepared on behalf of, and for the exclusive use of Jacobs and AECOM client, and is subject to, and issued in accordance with, the provisions of the contract between Jacobs, AECOM and the client. Jacobs and AECOM accepts no liability or responsibility whatsoever for, or in respect of, any use of, or reliance upon, this document by any third party.





- Legend**
- Corridor 6 extents
  - Corridor 7 extents
  - Corridor 6 & 7 extents
  - Corridor 6 – approximate centre of corridor
  - Corridor 7 – approximate centre of corridor
  - Corridor 6 & 7 – approximate centre of corridor
  - A Listed Building
  - Great Trails
  - Core Paths
  - Scheduled Monument
  - Conservation Area
  - Garden and Designed Landscape
  - Special Protection Area (SPA)
  - Special Area of Conservation (SAC)
  - Wetlands of International Importance (Ramsar Sites)
  - Ancient Woodland Inventory
  - Site of Special Scientific Interest (SSSI)
  - Marine Protected Area (MPA)
  - National Scenic Area
  - Loch Lomond and the Trossachs National Park
  - Flood Mapping Coastal Extents – Medium Likelihood
  - Flood Mapping River Extents – Medium Likelihood

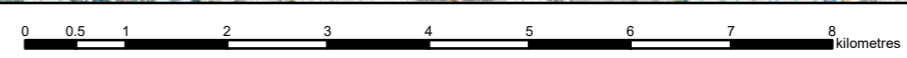
Rev.	Rev. Date	12/02/2021	For Information	TS	RC	SB	DR

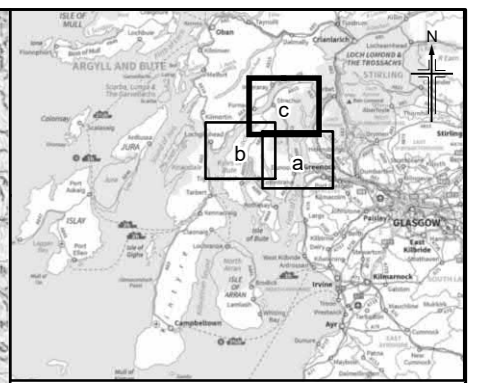
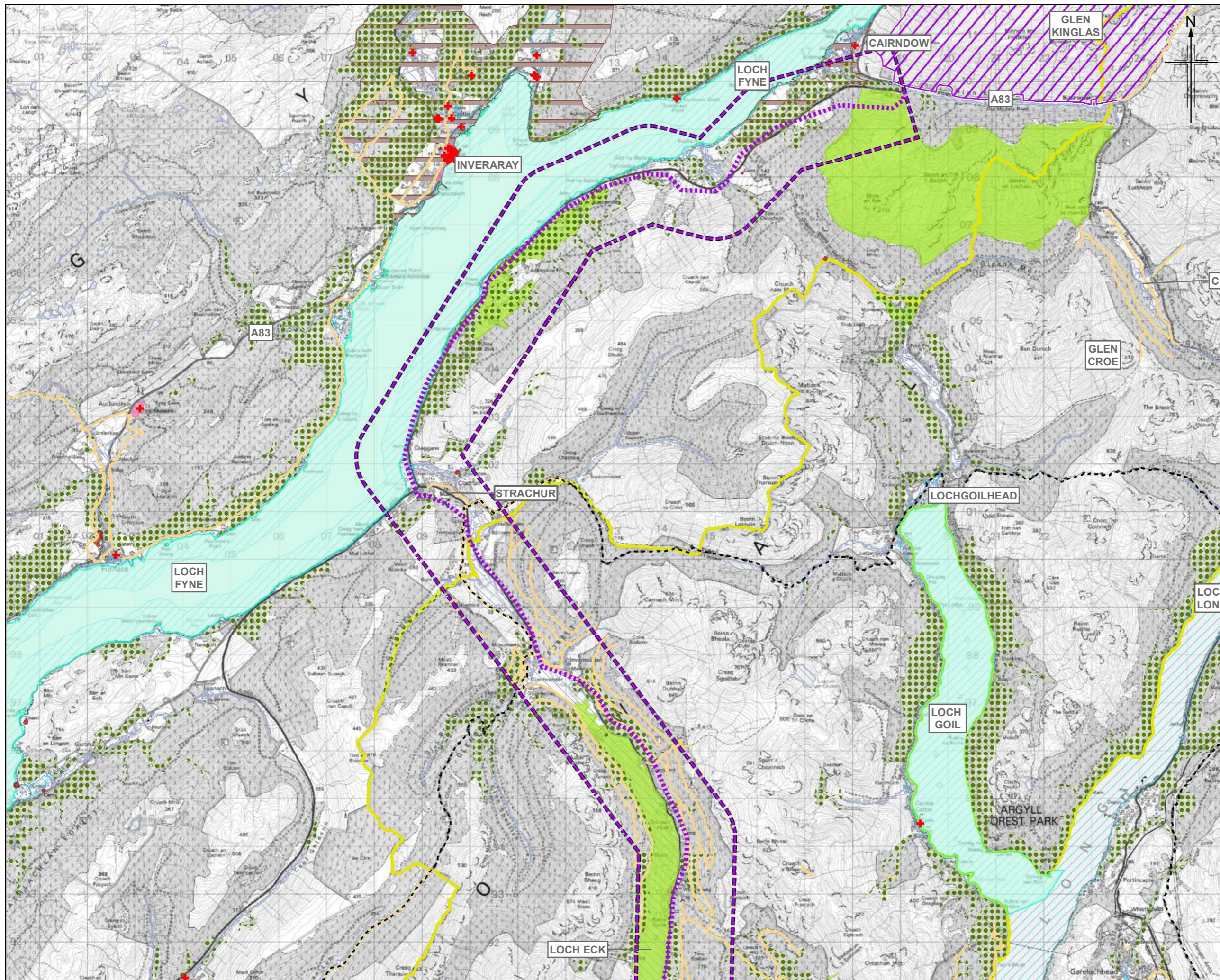
**Jacobs AECOM**



Client  
Project  
Drawing title  
**FIGURE C.3B  
PRELIMINARY ASSESSMENT  
CORRIDORS 6, 7**

Sheet 02 of 03	
Drawing Status: <b>FOR INFORMATION</b>	Suitability: <b>S2</b>
Scale: <b>1:75,000 @ A3</b>	<b>DO NOT SCALE</b>
Jacobs No. <b>B2356701</b>	
Client No.	
Drawing number <b>A83AAB-JAC-GEN-XX XX-DR-CX-9002</b>	Rev <b>P01</b>





**Legend**

- Corridor 6 extents
- Corridor 7 extents
- Corridor 6 & 7 extents
- Corridor 6 – approximate centre of corridor
- Corridor 7 – approximate centre of corridor
- Corridor 6 & 7 – approximate centre of corridor
- A Listed Building
- Great Trails
- Core Paths
- Scheduled Monument
- Conservation Area
- Garden and Designed Landscape
- Special Protection Area (SPA)
- Special Area of Conservation (SAC)
- Wetlands of International Importance (Ramsar Sites)
- Ancient Woodland Inventory
- Site of Special Scientific Interest (SSSI)
- Marine Protected Area (MPA)
- National Scenic Area
- Loch Lomond and the Trossachs National Park
- Flood Mapping Coastal Extents – Medium Likelihood
- Flood Mapping River Extents – Medium Likelihood

Rev.	Rev. Date	For Information	TS	RC	SB	DR
P01	12/02/2021	For Information				
Rev.	Rev. Date	Purpose of revision	Orig/Dwn	Checkd	Rev'd	Apprv'd

Sheet 03 of 03

**Jacobs AECOM**

Client:

Project:

Drawing title: **FIGURE C.3C  
PRELIMINARY ASSESSMENT  
CORRIDORS 6, 7**

Drawing Status: <b>FOR INFORMATION</b>	Suitability: <b>S2</b>
Scale: <b>1:75,000 @ A3</b>	<b>DO NOT SCALE</b>
Jacobs No. <b>B2356701</b>	
Drawing number: <b>A83AAB-JAC-GEN-XX XX-DR-CX-9002</b>	Rev: <b>P01</b>

© Copyright 2021 Jacobs UK Ltd and AECOM Limited. The concepts and information contained in this document are the property of Jacobs and AECOM. Use or copying of this document in whole or in part without the written permission of Jacobs and AECOM constitutes an infringement of copyright.  
Limitation: This document has been prepared on behalf of, and for the exclusive use of Jacobs and AECOM client, and is subject to, and issued in accordance with, the provisions of the contract between Jacobs, AECOM and the client. Jacobs and AECOM accepts no liability or responsibility whatsoever for, or in respect of, any use of, or reliance upon, this document by any third party.

