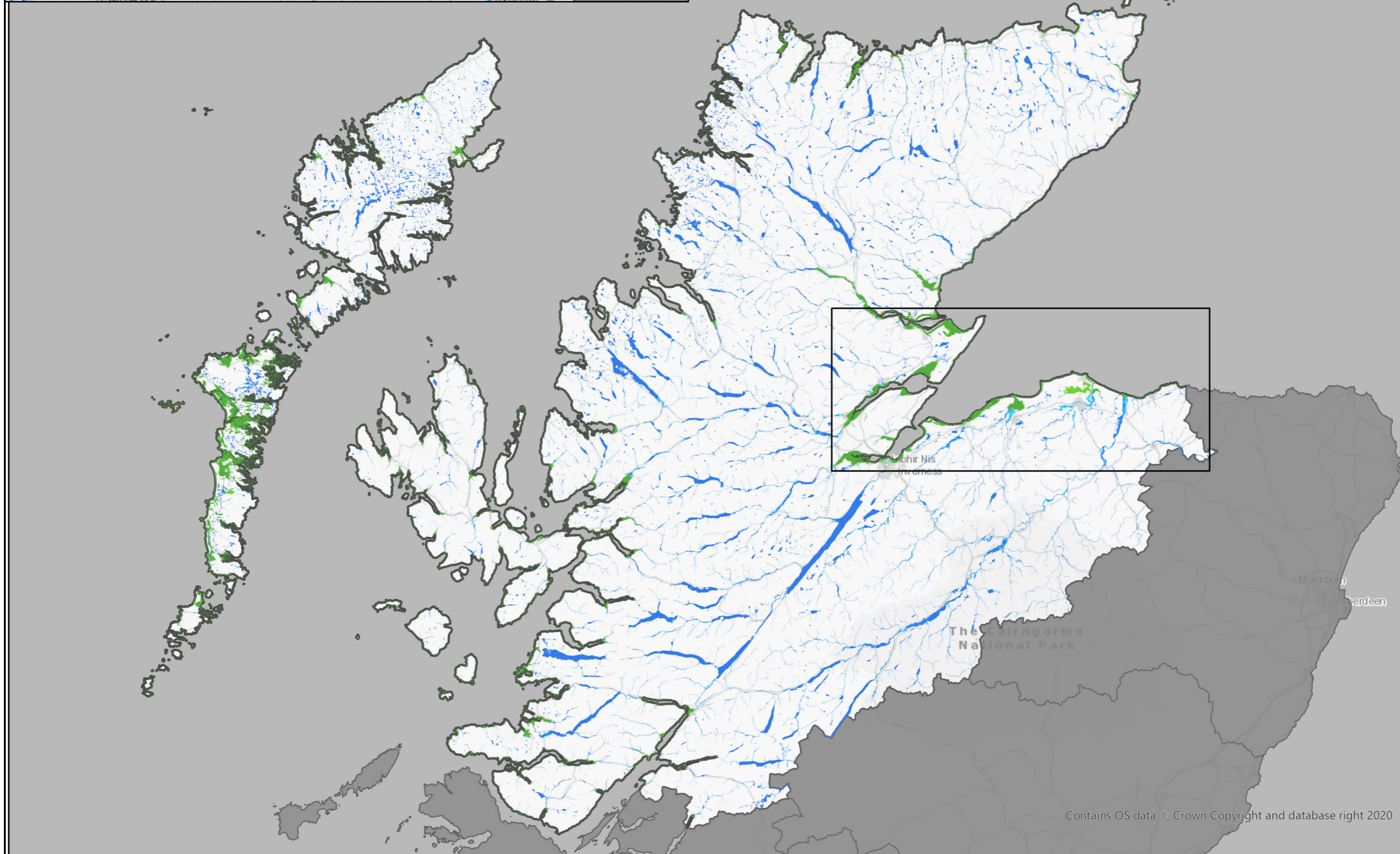
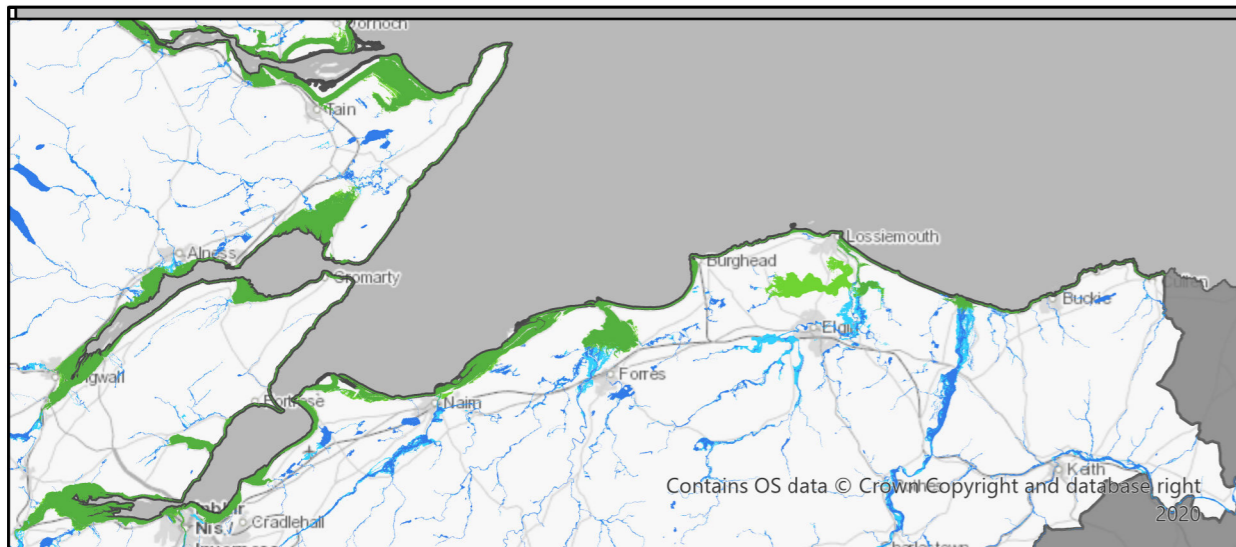


- ### Environmental Constraints
- Air Quality Management Areas (AQMAs) - July 2020
  - Battlefields Inventory Boundary
  - Cairngorms National Park
  - Conservation Areas
  - Core Paths
  - Gardens and Designed Landscapes
  - Geological Conservation Review Sites
  - National Cycle Network Routes
  - National Nature Reserve (NNR)
  - National Scenic Areas (NSA)
  - Nature Conservation Marine Protected Area (NCMPA)
  - Ramsar
  - Sites of Special Scientific Interest (SSSI)
  - Special Areas of Conservation (SAC)
  - Special Protection Areas (SPA)
  - World Heritage Sites

<b>Jacobs</b> <b>AECOM</b>
Client
Project
Drawing title <b>Highlands and Islands - Environmental Constraints</b>

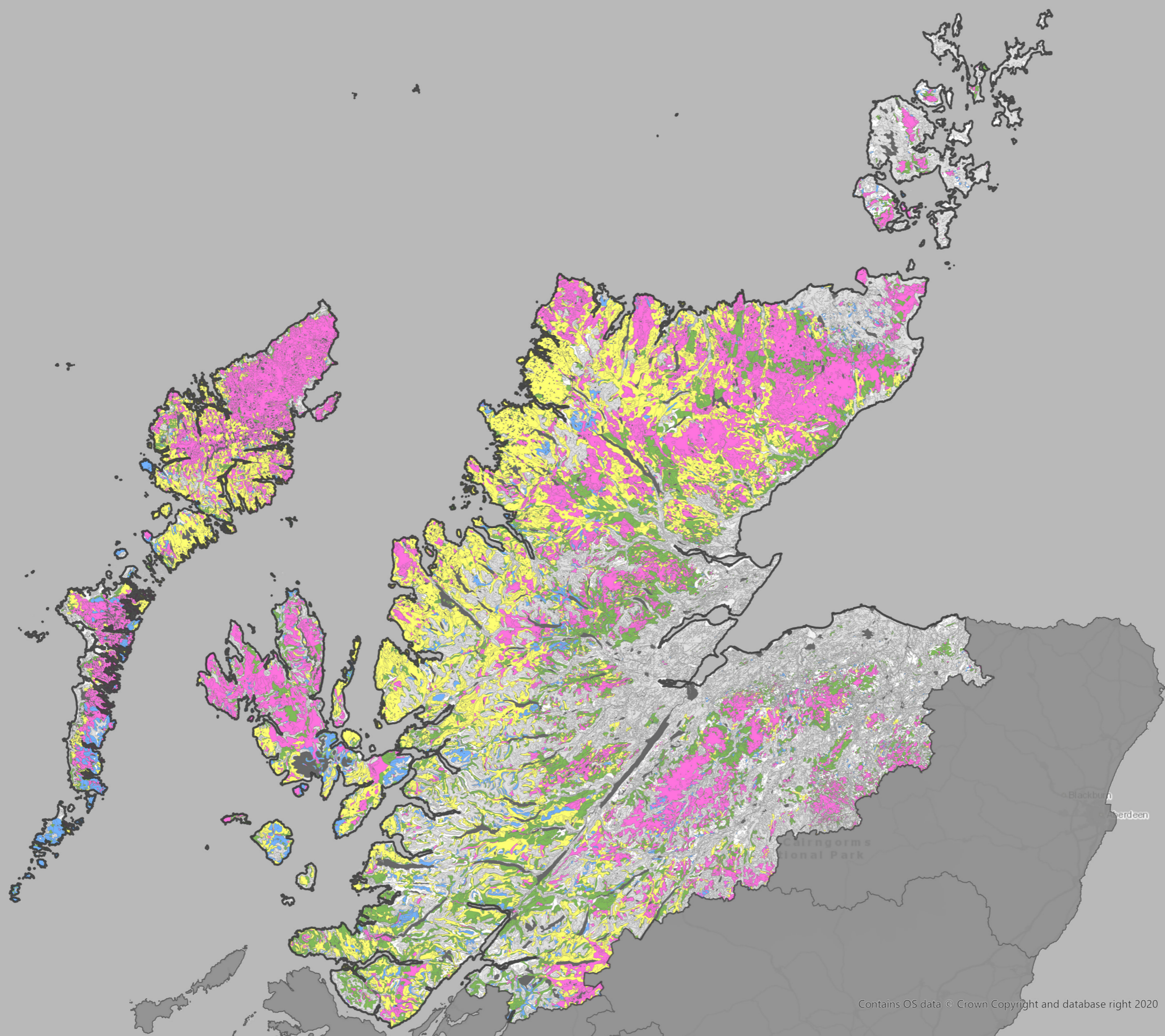


- Flood Areas & Likelihood**
- █ Coastal Flooding - High Probability
  - █ Coastal Flooding - Medium Probability
  - █ River Flooding - High Probability
  - █ River Flooding - Medium Probability


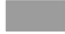
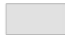


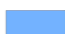


	<b>Jacobs AECOM</b>
Client	 TRANSPORT SCOTLAND <small>COIRIOMHAL ALBA</small>
Project	
Drawing title	<b>Highlands and Islands - High and Medium Flood Likelihood Extents</b>

© Copyright 2021 Jacobs U.K. Limited. The concepts and information contained in this document are the property of Jacobs. Use or copying of this document in whole or in part without the written permission of Jacobs constitutes an infringement of copyright. Limitation: This drawing has been prepared on behalf of, and for the exclusive use of Jacobs' Client, and is subject to, and issued in accordance with, the provisions of the contract between Jacobs and the Client. Jacobs accepts no liability or responsibility whatsoever for, or in respect of, any use of, or reliance upon, this drawing by any third party.

N



# Carbon and Peatland Map 2016

-  Non-Soil
-  Unknown Soil
-  Mineral Soil
-  Class 1
-  Class 2
-  Class 3
-  Class 4
-  Class 5

Jacobs AECOM

Client



Project



Drawing title

**Highlands and Islands - Carbon and Peatland Map 2016**

Contains OS data © Crown Copyright and database right 2020