
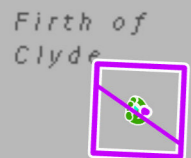

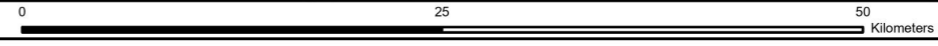


- ### Environmental Constraints
-  Battlefields Inventory Boundary
 -  Conservation Areas
 -  Core Paths
 -  Gardens and Designed Landscapes
 -  Geological Conservation Review Sites
 -  National Cycle Network Routes
 -  National Scenic Areas (NSA)
 -  Nature Conservation Marine Protected Areas (NCMPA)
 -  National Nature Reserve (NNR)
 -  Ramsar
 -  Special Areas of Conservation (SAC)
 -  Special Protection Areas (SPA)
 -  Sites of Special Scientific Interest (SSSI)

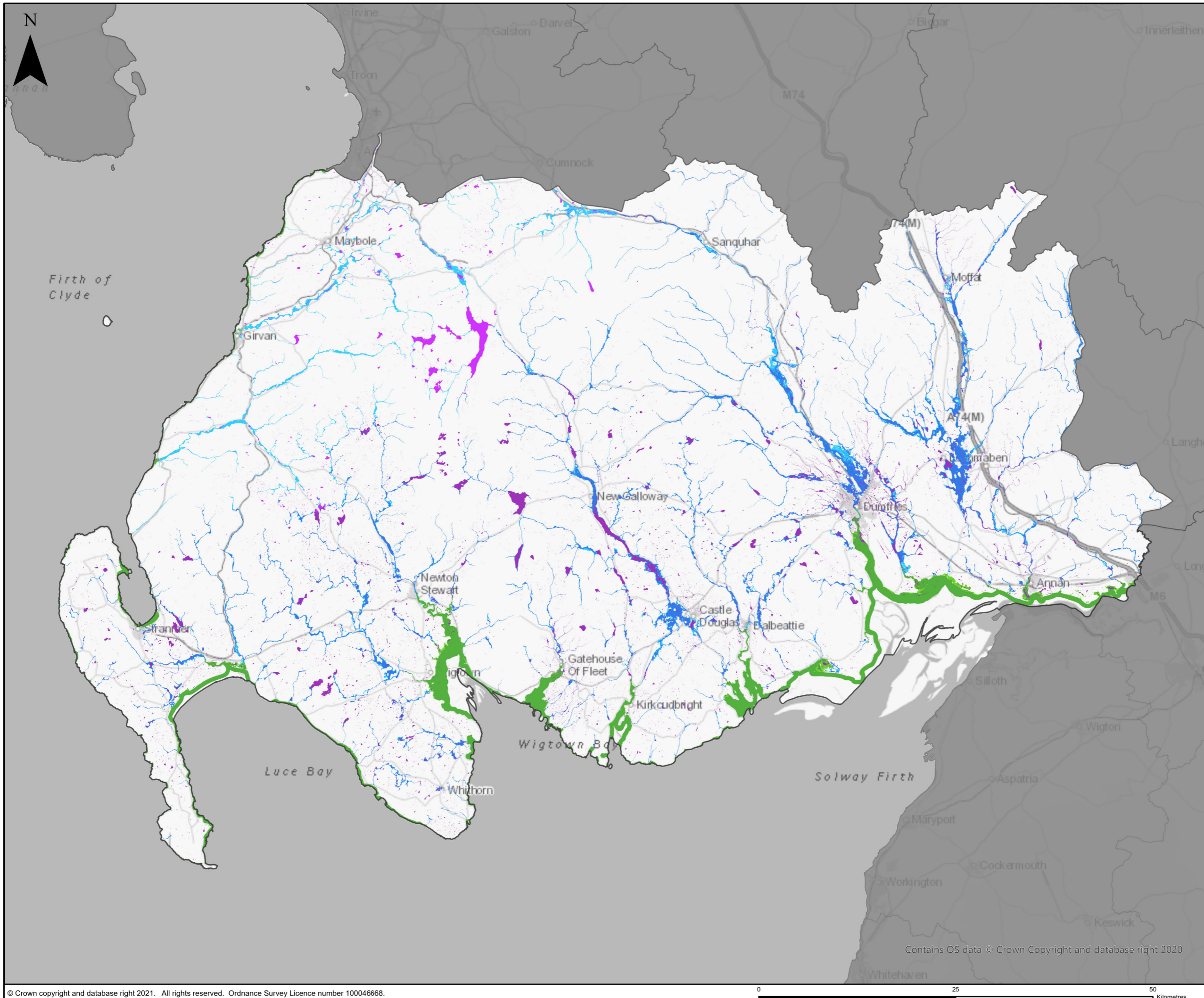


Jacobs AECOM
Client 
Project 
Drawing title South West - Environmental Constraints

Contains OS data © Crown Copyright and database right 2020



© Copyright 2021 Jacobs U.K. Limited. The concepts and information contained in this document are the property of Jacobs. Use or copying of this document in whole or in part without the written permission of Jacobs constitutes an infringement of copyright. Limitation: This drawing has been prepared on behalf of, and for the exclusive use of Jacobs' Client, and is subject to, and issued in accordance with, the provisions of the contract between Jacobs and the Client. Jacobs accepts no liability or responsibility whatsoever for, or in respect of, any use of, or reliance upon, this drawing by any third party.



Flood Areas and Likelihood

- Surface Flooding - Medium Probability
- Surface Flooding - High Probability
- Coastal Flooding - Medium Probability
- Coastal Flooding - High Probability
- River Flooding - Medium Probability
- River Flooding - High Probability

JACOBS AECOM

Client



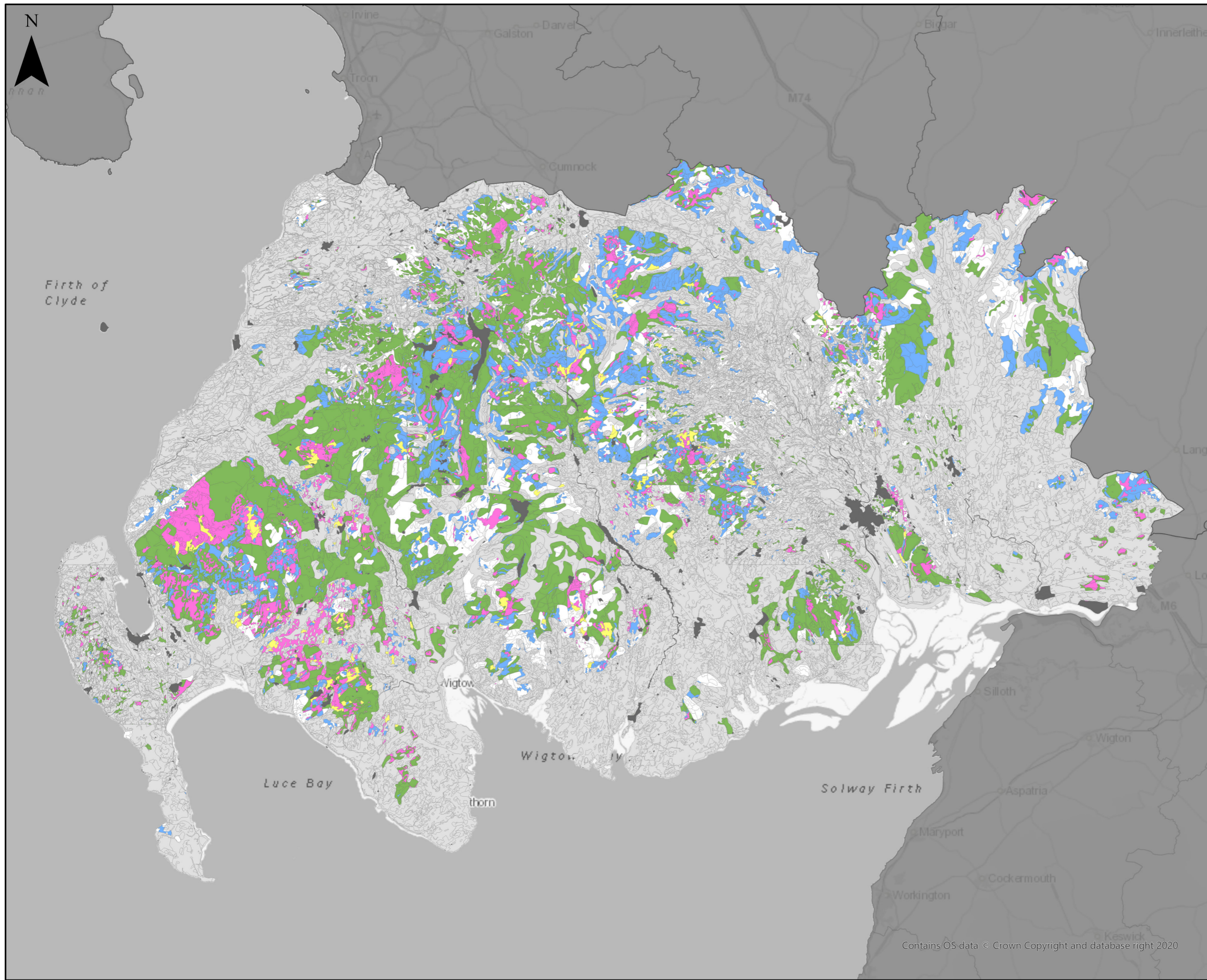
Project



Drawing title

South West of Scotland Region - Medium and High Flood Likelihood Extents

Contains OS data © Crown Copyright and database right 2020



Carbon and Peatland Map 2016

- Non-Soil
- Mineral Soil
- Class 1
- Class 2
- Class 3
- Class 4
- Class 5

Jacobs AECOM



Drawing title

South West Scotland Region - Carbon and Peatland Map 2016

Contains OS data © Crown Copyright and database right 2020