

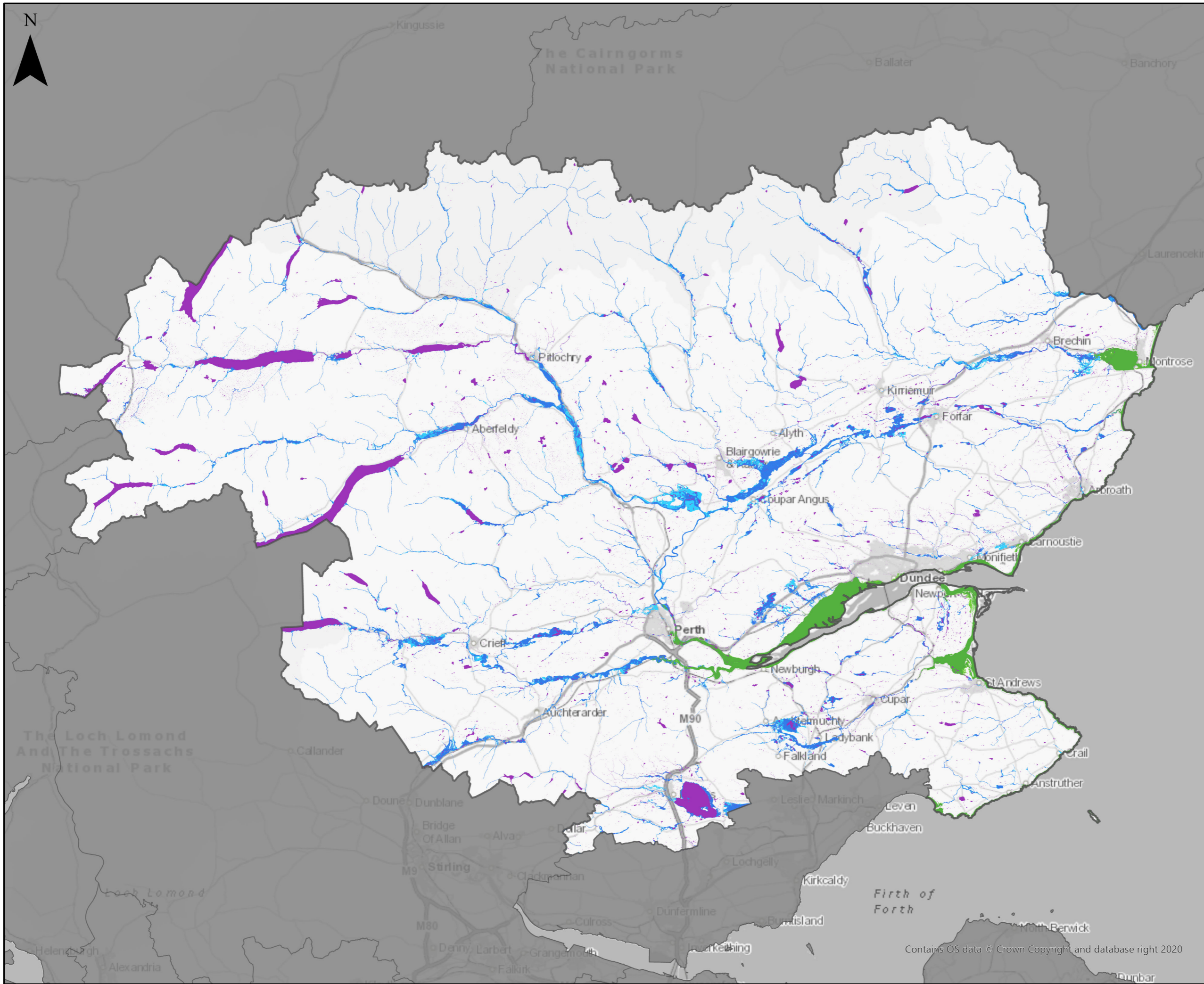


- ### Environmental Constraints
- Air Quality Management Areas (AQMAs)
  - Battlefields Inventory Boundary
  - Conservation Areas
  - Core Paths
  - Gardens and Designed Landscapes
  - Geological Conservation Review Sites
  - Ramsar
  - Nature Conservation Marine Protected Areas (NCMPA)
  - National Cycle Network Routes
  - National Nature Reserve (NNR)
  - National Parks Scotland
  - National Scenic Areas (NSA)
  - Sites of Special Scientific Interest (SSSI)
  - Special Areas of Conservation (SAC)
  - Special Protection Areas (SPA)





|  |   |
|--|---|
| <b>Jacobs AECOM</b>  |   |
| Client   |  |
| Project  |  |
| Drawing title  |   |
| <b>Tay Cities - Environmental Constraints</b>  |   |
| <p>© Copyright 2021 Jacobs U.K. Limited. The concepts and information contained in this document are the property of Jacobs. Use or copying of this document in whole or in part without the written permission of Jacobs constitutes an infringement of copyright. Limitation: This drawing has been prepared on behalf of, and for the exclusive use of Jacobs' Client, and is subject to, and issued in accordance with, the provisions of the contract between Jacobs and the Client. Jacobs accepts no liability or responsibility whatsoever for, or in respect of, any use of, or reliance upon, this drawing by any third party.</p> |   |

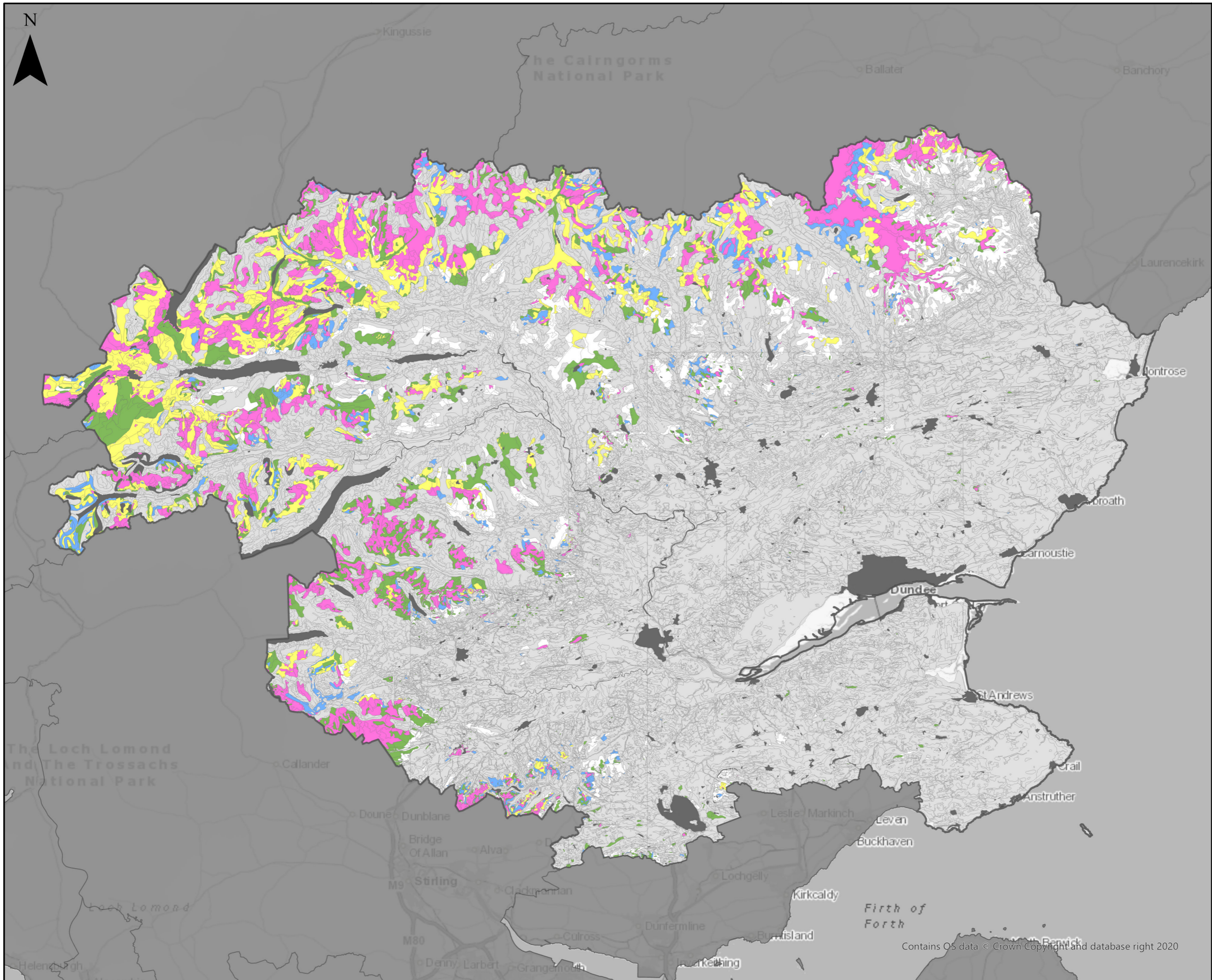


**Flood Areas & Likelihood**

- Surface Flooding - Medium Probability
- Surface Flooding - High Probability
- Coastal Flooding - Medium Probability
- Coastal Flooding - High Probability
- River Flooding - Medium Probability
- River Flooding - High Probability

|                     |   |
|---------------------|---|
| <b>Jacobs AECOM</b> |   |
| Client              |  |
| Project             |  |
| Drawing title       | <b>Tay Cities - Medium and High Flood Likelihood Extents</b>                          |

© Copyright 2021 Jacobs U.K. Limited. The concepts and information contained in this document are the property of Jacobs. Use or copying of this document in whole or in part without the written permission of Jacobs constitutes an infringement of copyright. Limitation: This drawing has been prepared on behalf of, and for the exclusive use of Jacobs' Client, and is subject to, and issued in accordance with, the provisions of the contract between Jacobs and the Client. Jacobs accepts no liability or responsibility whatsoever for, or in respect of, any use of, or reliance upon, this drawing by any third party.



**Carbon and Peatland Map 2016**

- Non-Soil
- Mineral Soil
- Class 1
- Class 2
- Class 3
- Class 4
- Class 5

**JACOBS AECOM**

Client



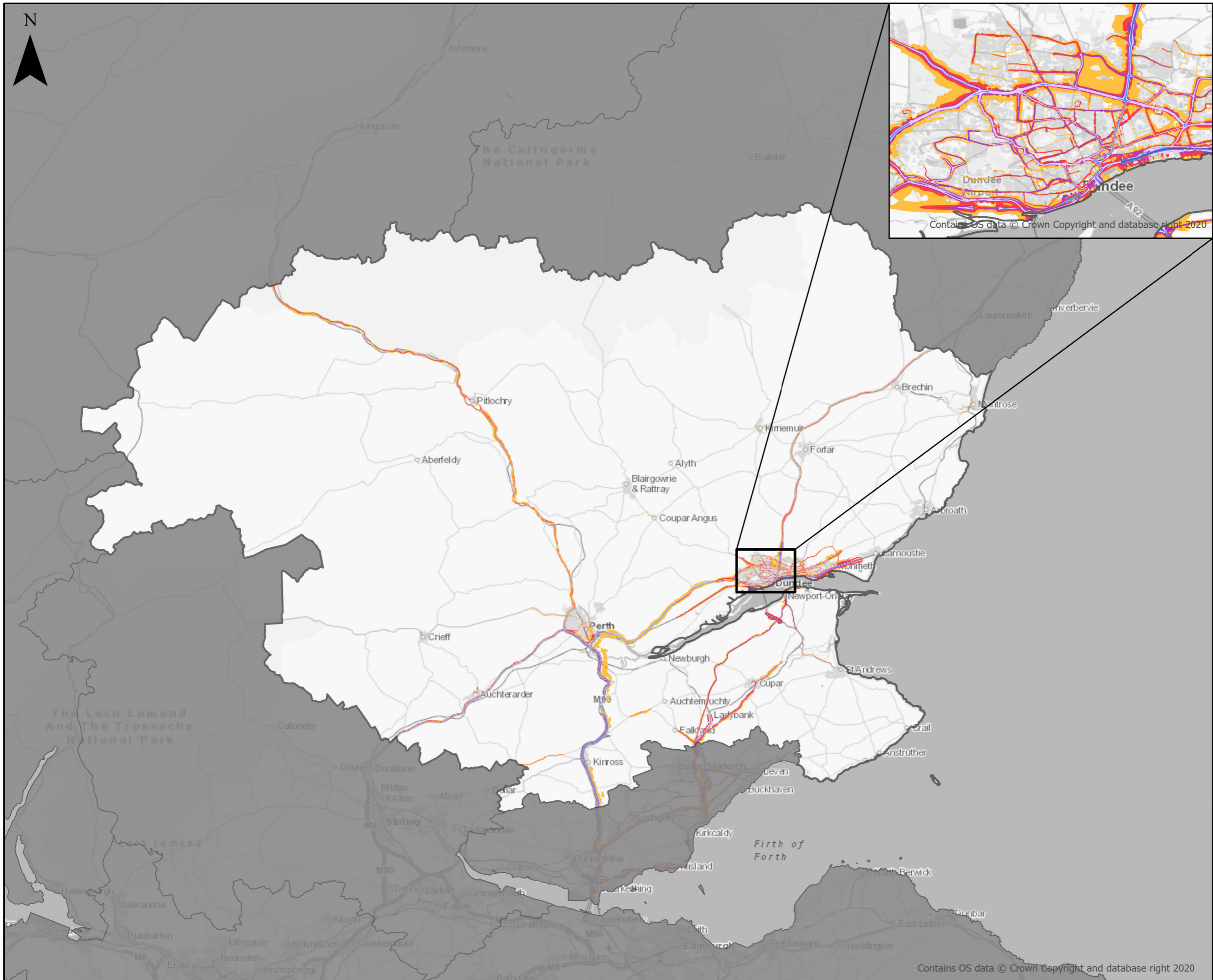
Project



Drawing title

**Tay Cities - Carbon and Peatland Map 2016**

Contains OS data © Crown Copyright and database right 2020



**Round 3 Noise (Day, Evening & Night)**

- 55 => x < 60 dB
- 60 => x < 65 dB
- 65 => x < 70 dB
- 70 => x < 75 dB
- 75 => x < 80 dB
- x >= 80 dB

Contains OS data © Crown Copyright and database right 2020

Contains OS data © Crown Copyright and database right 2020

|  |
|--|
| <b>Jacobs</b> <b>AECOM</b>   |
| Client   |
| Project  |
| Drawing title<br><b>Tay Cities Region - Round 3 Noise (Day, Evening &amp; Night)</b> |

© Copyright 2021 Jacobs U.K. Limited. The concepts and information contained in this document are the property of Jacobs. Use or copying of this document in whole or in part without the written permission of Jacobs constitutes an infringement of copyright. Limitation: This drawing has been prepared on behalf of, and for the exclusive use of Jacobs' Client, and is subject to, and issued in accordance with, the provisions of the contract between Jacobs and the Client. Jacobs accepts no liability or responsibility whatsoever for, or in respect of, any use of, or reliance upon, this drawing by any third party.