

FIGURE 3.1



LEGEND



Route Corridors



VEHICLE FERRY
FROM ABERDEEN TO
Lerwick 14 Hrs
Stromness 8-14 Hrs

Rev	Date	Purpose of Revision	Dwn	Chkd	Appd

JE JACOBS
 95 Bothwell Street, Glasgow, G2 7HX, UK
 Tel: 0141 204 2511 Fax: 0141 226 3109
 www.jacobsbatle.com

Client: Aberdeen Western Peripheral Route

Project: Aberdeen Western Peripheral Route Environmental Statement, Part A - The Scheme

Title: City Bypass & Cross Country Route

Drawing Status	FINAL	Revisions	
JB No.	0010332	Date	July 2007
Figure No.	FIGURE 3.1	Checked	AMM
Scale	1:50,000	Approved	SH
Drawn	BL	Checked	AMM

Based upon the Ordnance Survey mapping with the permission of Ordnance Survey on behalf of the controller of Her Majesty's Stationery Office © Crown Copyright 2006. Unauthorised reproduction infringes Crown Copyright and may lead to prosecution or civil proceedings. Scottish Executive Licence number: SE100020540 (2007)

This drawing is not to be used in whole or part other than for the intended purpose and project as defined on this drawing. Refer to the contract for full terms and conditions. Maps produced by Jacobs UK Ltd. This map should NOT be rescaled. Copyright reserved.

FIGURE 3.2



LEGEND

- Route Corridors
- Test Schemes

Rev	Date	Purpose of Revision	Drwn	Chkd	Appd

JE JACOBS
 95 Bothwell Street, Glasgow, G2 7HX, UK
 Tel: 0141 204 2511 Fax: 0141 226 3109
 www.jacobsbatle.com

Client: **Aberdeen Western Peripheral Route**

Project: **Aberdeen Western Peripheral Route Environmental Statement, Part A - The Scheme**

Title: **Western Leg Route Corridors 1-12 May 1992**

Drawing Status	FINAL	Revisions	
JB No.	0010332	Date	July 2007
Figure No.	FIGURE 3.2	Checked	AMM
Scale	1:75,000	Approved	SH
Drawn	RB	Checked	AMM

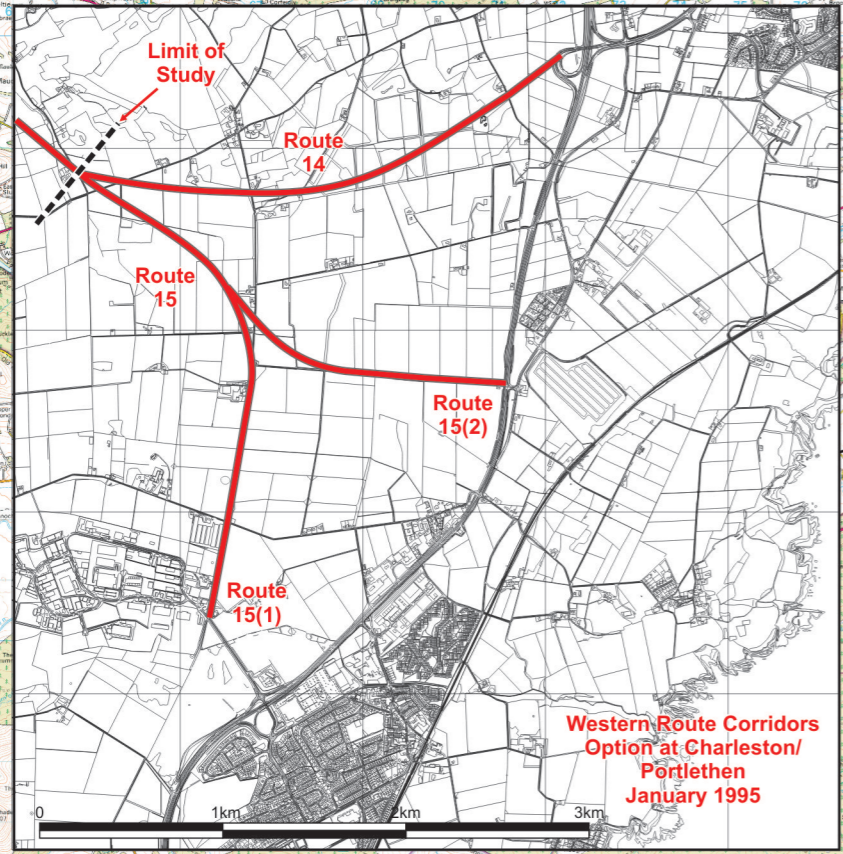
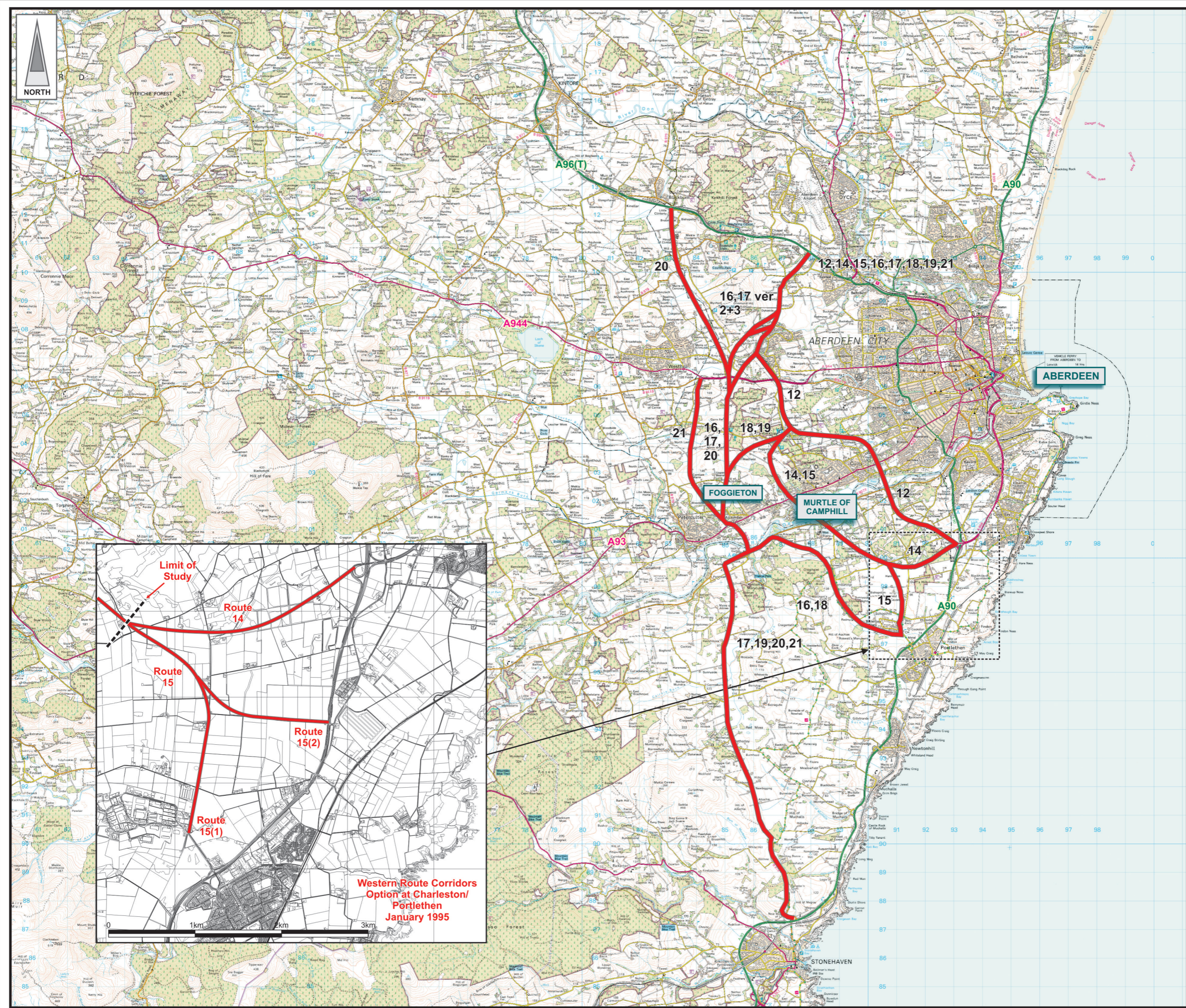
Based upon the Ordnance Survey mapping with the permission of Ordnance Survey on behalf of the controller of Her Majesty's Stationery Office © Crown Copyright 2006. Unauthorised reproduction infringes Crown Copyright and may lead to prosecution or civil proceedings. Scottish Executive Licence number: SE100020540 (2007)

FIGURE 3.3



LEGEND

-  Route Corridors
-  Test Schemes



Rev	Date	Purpose of Revision	Drwn	Chkd	Appd

JE JACOBS
 95 Bothwell Street, Glasgow, G2 7HX, UK
 Tel: 0141 204 2511 Fax: 0141 226 3109
 www.jacobsbatle.com

Client: **Aberdeen Western Peripheral Route**

Project: **Aberdeen Western Peripheral Route Environmental Statement, Part A - The Scheme**

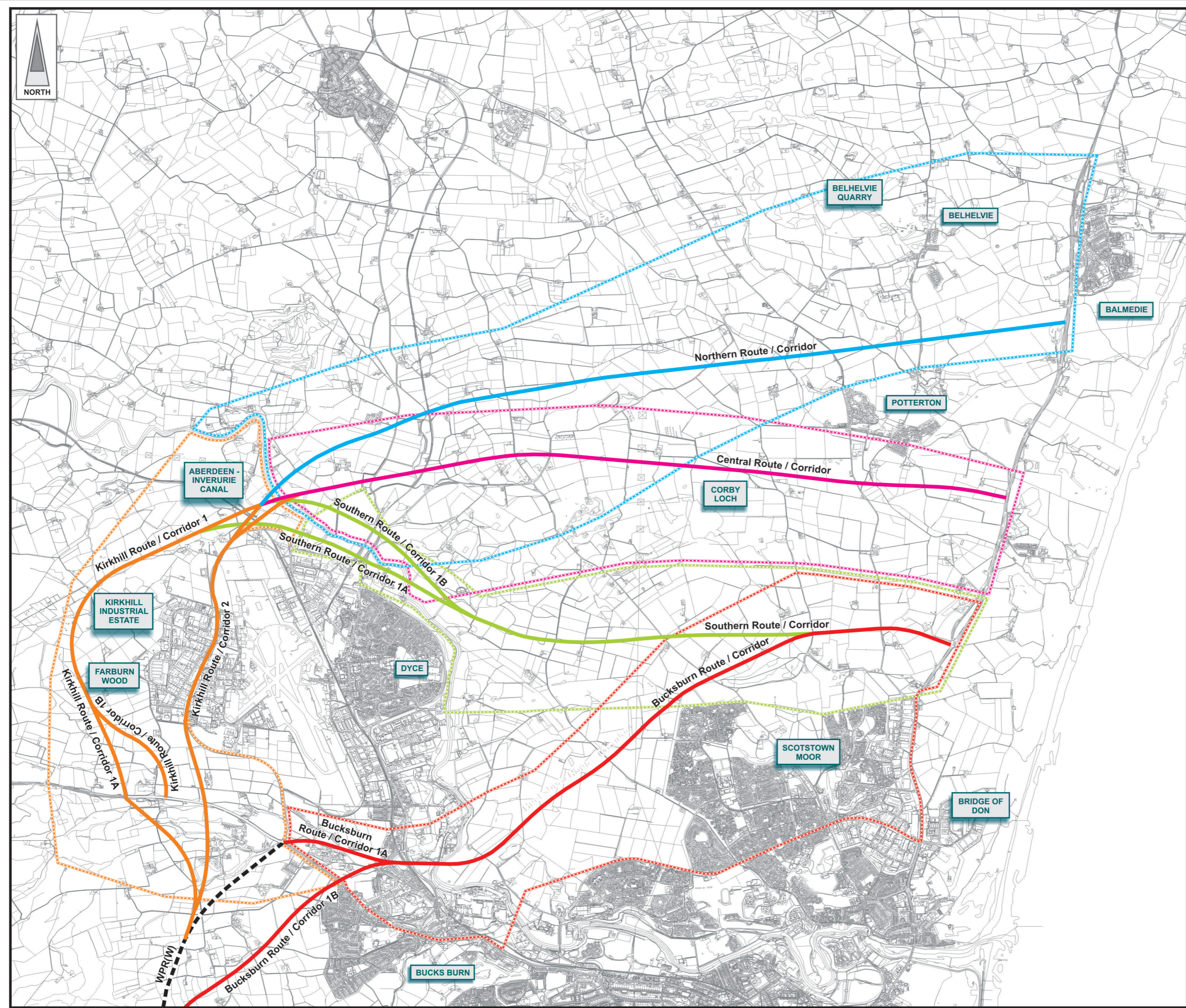
Title: **Western Leg Route Corridors 12-21 November 1994**

Drawing Status	FINAL	Revisions	
JB No.	0010332	Date	July 2007
Figure No.	FIGURE 3.3	Approved	SH
Scale	1:125,000	Checked	AMM
Drawn	RB	signature	signature

Based upon the Ordnance Survey mapping with the permission of Ordnance Survey on behalf of the controller of Her Majesty's Stationery Office © Crown Copyright 2006. Unauthorised reproduction infringes Crown Copyright and may lead to prosecution or civil proceedings. Scottish Executive Licence number: SE100020540 (2007)

This drawing is not to be used in whole or part other than for the intended purpose and project as defined on this drawing. Refer to the contract for full terms and conditions. Maps produced by Jacobs UK Ltd. This map should NOT be rescaled. Copyright reserved.

FIGURE 3.4



LEGEND

- Bucksburn Route/Corridor
- Kirkhill Route/Corridor
- Northern Route/Corridor
- Central Route/Corridor
- Southern Route/Corridor
- WPR (W) Corridor

Rev	Date	Purpose of Revision	Drwn	Chkd	Appd

JE JACOBS
 95 Bothwell Street, Glasgow, G2 7HX, UK
 Tel: 0141 204 2511 Fax: 0141 226 3109
 www.jacobsbabtie.com

Client: **Aberdeen Western Peripheral Route**

Project: **Aberdeen Western Peripheral Route Environmental Statement, Part A - The Scheme**

Title: **Northern Leg Stage 1 Preferred Corridors May 2002**

Drawing Status	FINAL	Revisions	
JB No.	0010332	Date	July 2007
Figure No.	FIGURE 3.4	Drawn	RB
Scale	As Shown	Checked	AMM
		Approved	SH

Based upon the Ordnance Survey mapping with the permission of Ordnance Survey on behalf of the controller of Her Majesty's Stationery Office © Crown Copyright 2006. Unauthorised reproduction infringes Crown Copyright and may lead to prosecution or civil proceedings. Scottish Executive Licence number: SE100020540 (2007)

This drawing is not to be used in whole or part other than for the intended purpose and project as defined on this drawing. Refer to the contract for full terms and conditions. Maps produced by Jacobs UK Ltd. This map should NOT be rescaled. Copyright reserved.

FIGURE 3.5



LEGEND

- Northern Leg Route Corridor
- WPR (W) Corridor

Rev	Date	Purpose of Revision	Drwn	Chkd	Appd

JE JACOBS
 95 Bothwell Street, Glasgow, G2 7HX, UK
 Tel: 0141 204 2511 Fax: 0141 226 3109
 www.jacobsbattle.com

Client: Aberdeen Western Peripheral Route

Project: **Aberdeen Western Peripheral Route**
 Environmental Statement, Part A - The Scheme

Title: **Northern Leg: Stage 2 Corridors**
 November 2002

Drawing Status	FINAL	Revisions	
JB No.	0010332	Date	July 2007
Figure No.	FIGURE 3.5	Approved	SH
Scale	As Shown	Checked	AMM
Drawn	RB	signature	signature