

Legend

— Proposed scheme (Stage 3 design)

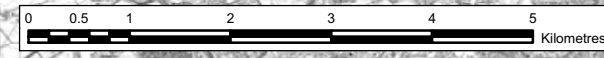
Designations

- Candidate for Special Landscape Area
- Historic Gardens and Designed Landscapes
- Conservation Areas
- Areas of Great Landscape Value
- Areas of Outstanding Landscape Quality


Local Landscape Character Areas

- Coastal flat
- Coastal hills
- Designed wooded landscape
- Disturbed farmland
- Firth of Forth
- Industrial
- Lowland hill and valley farmland
- Lowland plain
- Existing road corridor
- Urban
- Wooded lowland hill and valley

This map is based on Ordnance Survey material with the permission of Ordnance Survey on behalf of the Controller of Her Majesty's Stationery Office © Crown copyright. Unauthorised reproduction infringes Crown copyright and may lead to prosecution or civil proceedings. Scottish Government 100020540 2009.



Client



TRANSPORT SCOTLAND

An agency of The Scottish Government



JACOBS ARUP

Project
FORTH REPLACEMENT CROSSING
Environmental Statement

Drawing title
Overview of Local Landscape Character Areas and Landscape Designated Areas

Drawing Status
FINAL

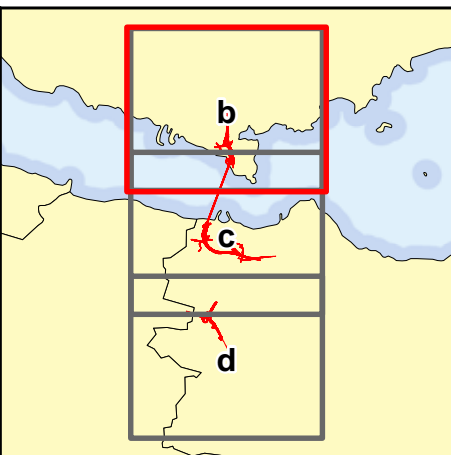
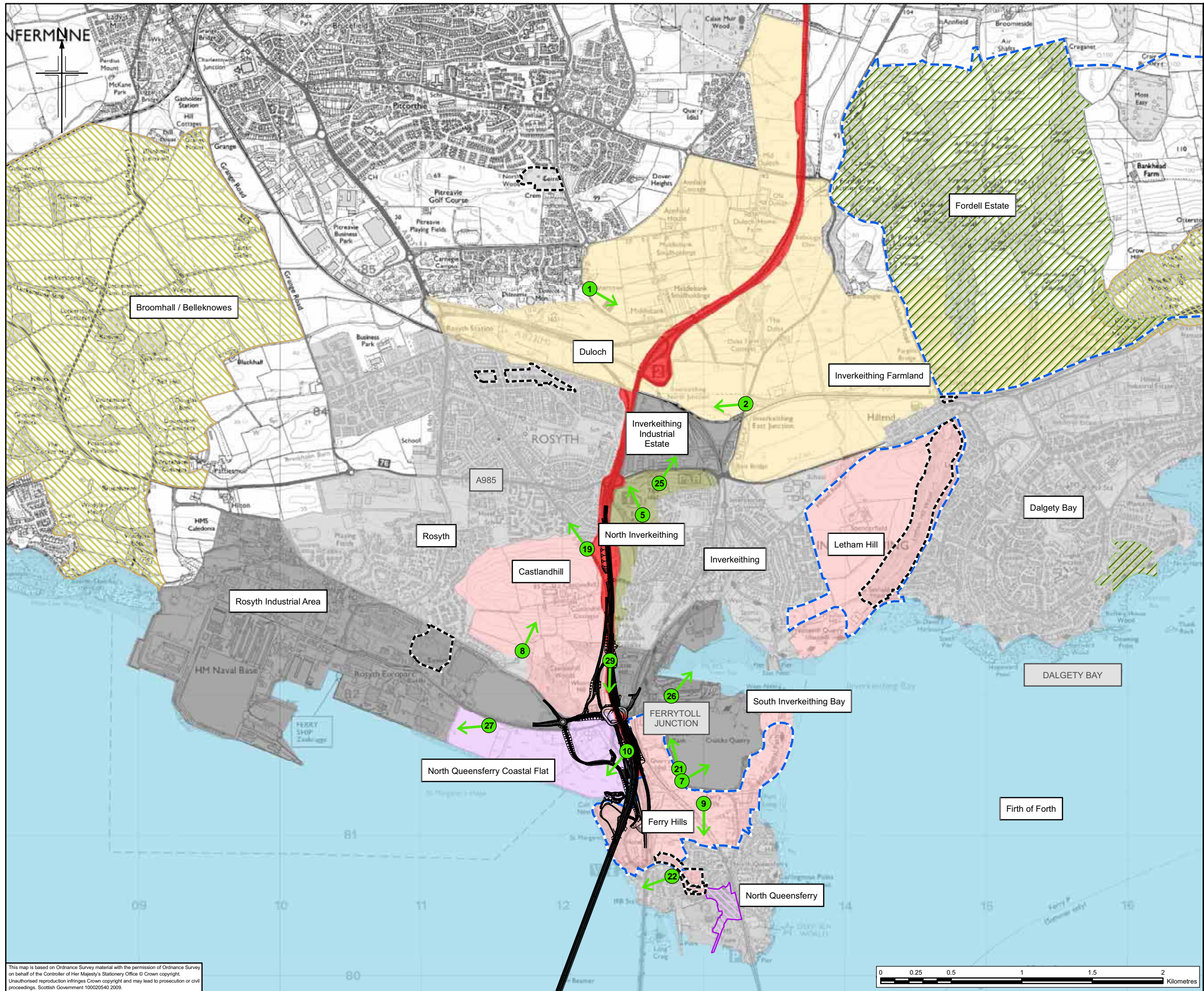
Scale
1:75,000 @ A3 DO NOT SCALE

Client no.
RD001675

Drawing number
FIGURE 12.1a

Rev
0

This drawing is not to be used in whole or part other than for the intended purpose and project as defined on this drawing. Refer to the contract for full terms and conditions.



- Legend**
- Proposed scheme (Stage 3 design)
- Designations**
- Tree Preservation Order
 - Candidate for Special Landscape Area
 - Historic Gardens and Designed Landscapes
 - Conservation Areas
 - Areas of Great Landscape Value
 - Areas of Outstanding Landscape Quality
- Local Landscape Character Areas**
- Coastal flat
 - Coastal hills
 - Designed wooded landscape
 - Disturbed farmland
 - Firth of Forth
 - Industrial
 - Lowland hill and valley farmland
 - Lowland plain
 - Existing road corridor
 - Urban
 - Wooded lowland hill and valley
- Photograph viewpoint location

Client

An agency of The Scottish Government

JACOBS ARUP

Project
FORTH REPLACEMENT CROSSING Environmental Statement

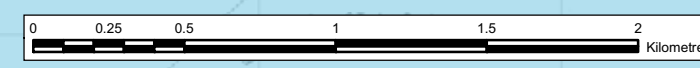
Drawing title
Local Landscape Character Areas and Landscape Designated Areas

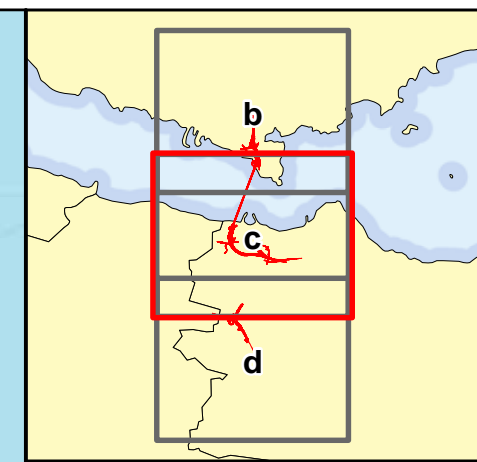
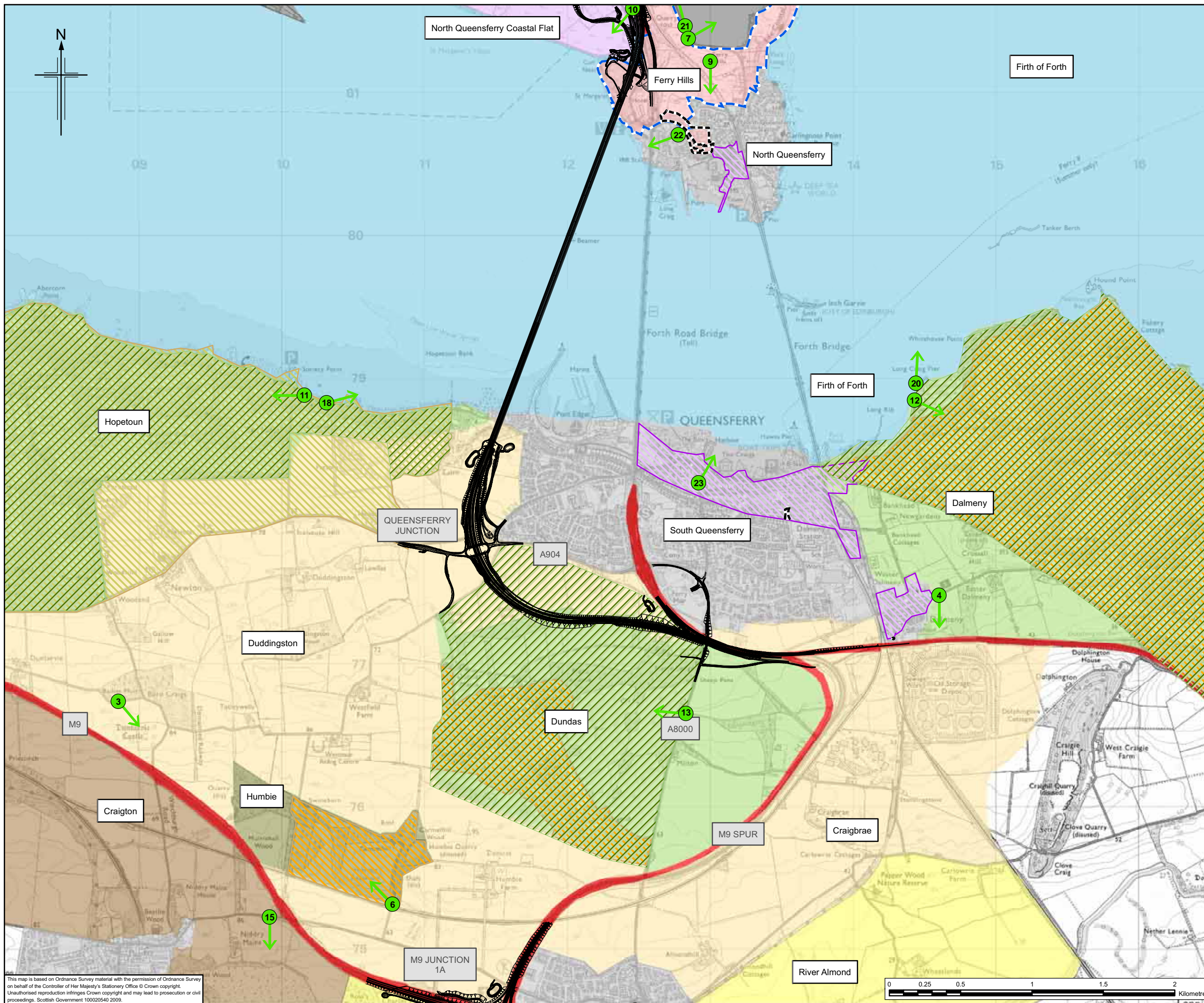
Drawing Status: FINAL

Scale	1:25,000 @ A3	DO NOT SCALE
Client no.	RD001675	
Drawing number	FIGURE 12.1b	Rev 0

This drawing is not to be used in whole or part other than for the intended purpose and project as defined on this drawing. Refer to the contract for full terms and conditions.

This map is based on Ordnance Survey material with the permission of Ordnance Survey on behalf of the Controller of Her Majesty's Stationery Office © Crown copyright. Unauthorised reproduction infringes Crown copyright and may lead to prosecution or civil proceedings. Scottish Government 100020540 2009.





Legend

— Proposed scheme (Stage 3 design)

Designations

- Tree Preservation Order
- Candidate for Special Landscape Area
- Historic Gardens and Designed Landscapes
- Conservation Areas
- Areas of Great Landscape Value
- Areas of Outstanding Landscape Quality

Local Landscape Character Areas

- Coastal flat
- Coastal hills
- Designed wooded landscape
- Disturbed farmland
- Firth of Forth
- Industrial
- Lowland hill and valley farmland
- Lowland plain
- Existing road corridor
- Urban
- Wooded lowland hill and valley

↑ Photograph viewpoint location

Client

An agency of The Scottish Government

JACOBS ARUP

Project
FORTH REPLACEMENT CROSSING Environmental Statement

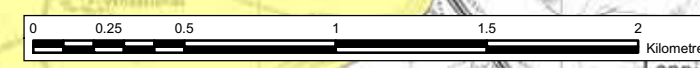
Drawing title
Local Landscape Character Areas and Landscape Designated Areas

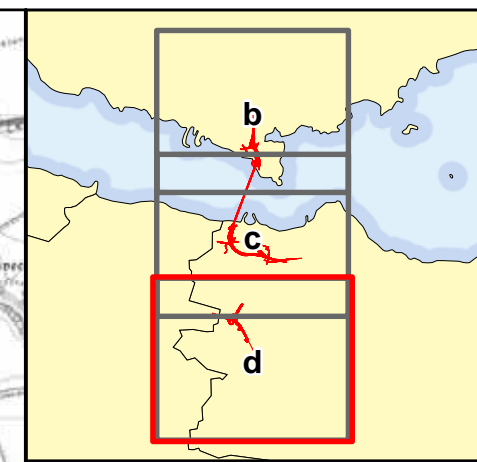
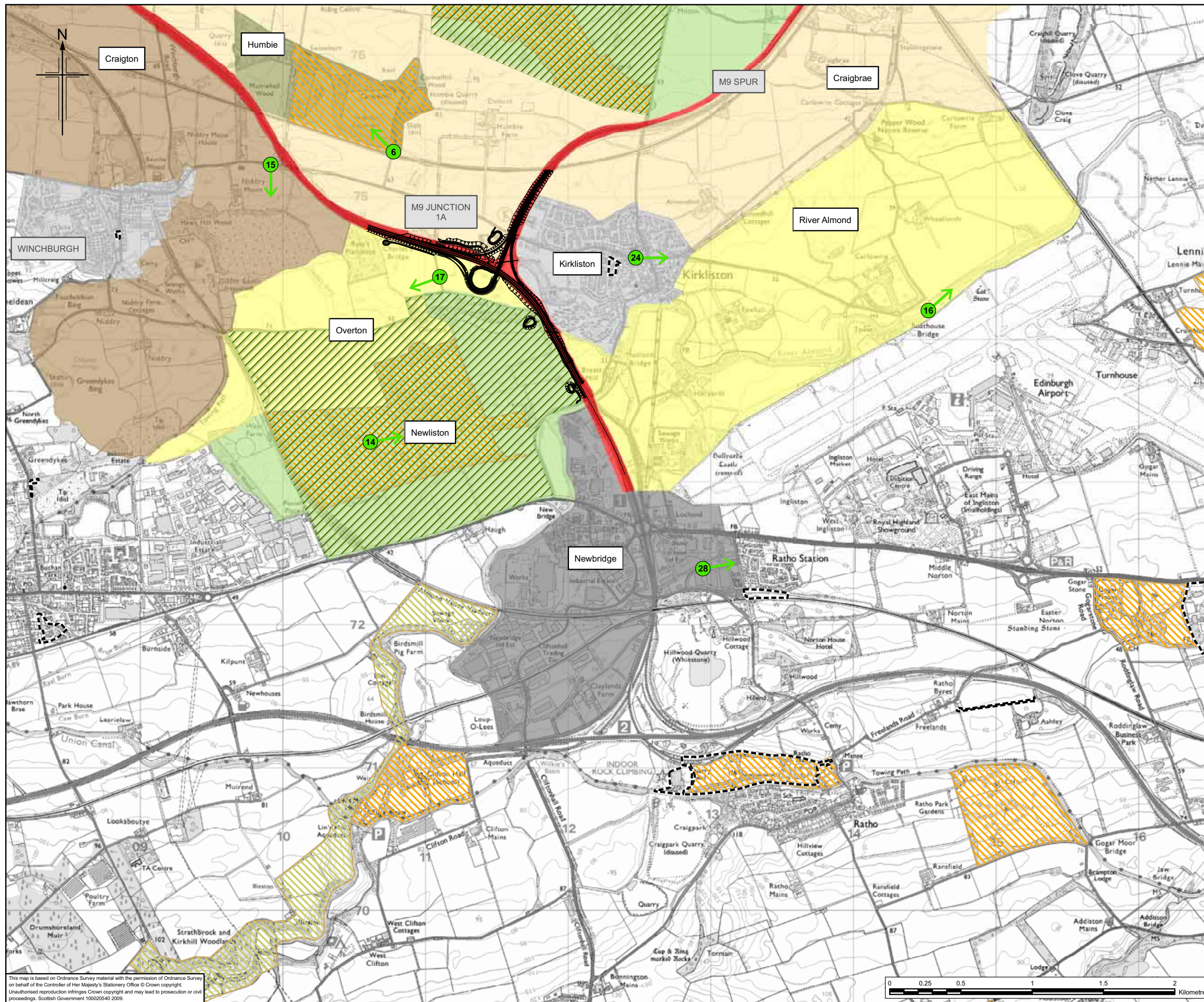
Drawing Status: FINAL

Scale	1:25,000 @ A3	DO NOT SCALE
Client no.	RD001675	
Drawing number	FIGURE 12.1c	Rev 0

This drawing is not to be used in whole or part other than for the intended purpose and project as defined on this drawing. Refer to the contract for full terms and conditions.

This map is based on Ordnance Survey material with the permission of Ordnance Survey on behalf of the Controller of Her Majesty's Stationery Office © Crown copyright. Unauthorised reproduction infringes Crown copyright and may lead to prosecution or civil proceedings. Scottish Government 100020540 2009.





Legend

— Proposed scheme (Stage 3 design)

Designations

- Tree Preservation Order
- Candidate for Special Landscape Area
- Historic Gardens and Designed Landscapes
- Conservation Areas
- Areas of Great Landscape Value
- Areas of Outstanding Landscape Quality

Local Landscape Character Areas

- Coastal flat
- Coastal hills
- Designed wooded landscape
- Disturbed farmland
- Firth of Forth
- Industrial
- Lowland hill and valley farmland
- Lowland plain
- Existing road corridor
- Urban
- Wooded lowland hill and valley

↑ Photograph viewpoint location

Client

An agency of The Scottish Government

JACOBS ARUP

Project
FORTH REPLACEMENT CROSSING Environmental Statement

Drawing title
Local Landscape Character Areas and Landscape Designated Areas

Drawing Status: FINAL

Scale: 1:25,000 @ A3 DO NOT SCALE

Client no.: RD001675

Drawing number: **FIGURE 12.1d** Rev 0

This drawing is not to be used in whole or part other than for the intended purpose and project as defined on this drawing. Refer to the contract for full terms and conditions.

This map is based on Ordnance Survey material with the permission of Ordnance Survey on behalf of the Controller of Her Majesty's Stationery Office © Crown copyright. Unauthorised reproduction infringes Crown copyright and may lead to prosecution or civil proceedings. Scottish Government 100020540 2009.

