

Legend

- Proposed scheme (Stage 3 design)
- ▭ Built visual receptors
- a) a) Receptor number *
- b) b) Impact Winter Year of Opening
- c) c) Impact Summer 15 Years after Opening
- ▭ Severe adverse impact
- ▭ Substantial adverse impact
- ▭ Moderate adverse impact
- ▭ Slight adverse impact
- ▭ Negligible adverse impact
- ▭ Major neutral impact
- ▭ Substantial neutral impact
- ▭ Moderate neutral impact
- ▭ Slight neutral impact
- ▭ Negligible neutral impact
- ▭ Slight beneficial impact

* For the main crossing, impacts are generally considered to be neutral and represent a significance of change. Where visual impacts are considered to be adverse as a result of the proximity of the receptor to the bridge structure, receptor numbers are shown in red (123).

This map is based on Ordnance Survey material with the permission of Ordnance Survey on behalf of the Controller of Her Majesty's Stationery Office © Crown copyright. Unauthorised reproduction infringes Crown copyright and may lead to prosecution or civil proceedings. Scottish Government 100020540 2009.

Client

JACOBS ARUP

Project
FORTH REPLACEMENT CROSSING
Environmental Statement

Drawing title
Main Crossing: Visual Impact on Built Receptors

Drawing Status: FINAL

Scale: 1:10,000 @ A3 DO NOT SCALE

Client no. RD001675

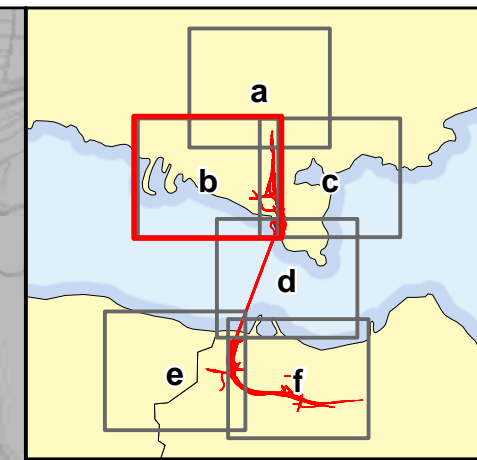
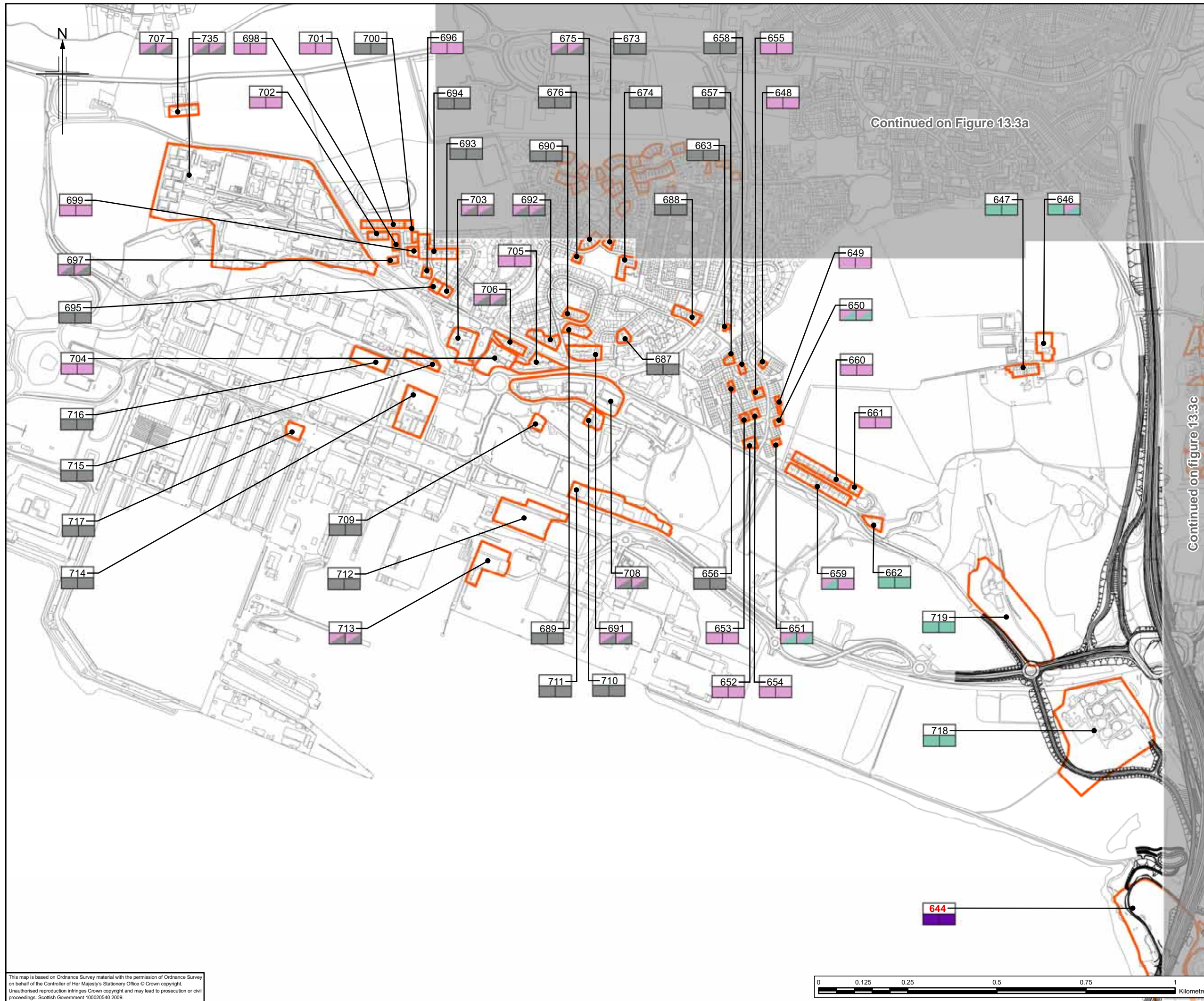
Drawing number **FIGURE 13.3a** Rev 0

This drawing is not to be used in whole or part other than for the intended purpose and project as defined on this drawing. Refer to the contract for full terms and conditions.

Continued on Figure 13.3b

Continued on Figure 13.3c

Continued on Figure 13.3b



Legend

- Proposed scheme (Stage 3 design)
- Built visual receptors
- a) a) Receptor number *
- b) b) Impact Winter Year of Opening
- c) c) Impact Summer 15 Years after Opening
- Severe adverse impact
- Substantial adverse impact
- Moderate adverse impact
- Slight adverse impact
- Negligible adverse impact
- Major neutral impact
- Substantial neutral impact
- Moderate neutral impact
- Slight neutral impact
- Negligible neutral impact
- Slight beneficial impact

* For the main crossing, impacts are generally considered to be neutral and represent a significance of change. Where visual impacts are considered to be adverse as a result of the proximity of the receptor to the bridge structure, receptor numbers are shown in red (123).

Client

TRANSPORT SCOTLAND
An agency of The Scottish Government

JACOBS ARUP

Project
**FORTH REPLACEMENT CROSSING
Environmental Statement**

Drawing title
**Main Crossing: Visual
Impact on Built Receptors**

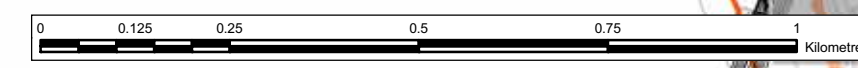
Drawing Status: FINAL

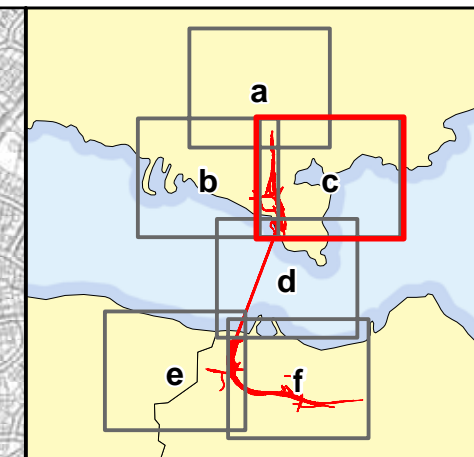
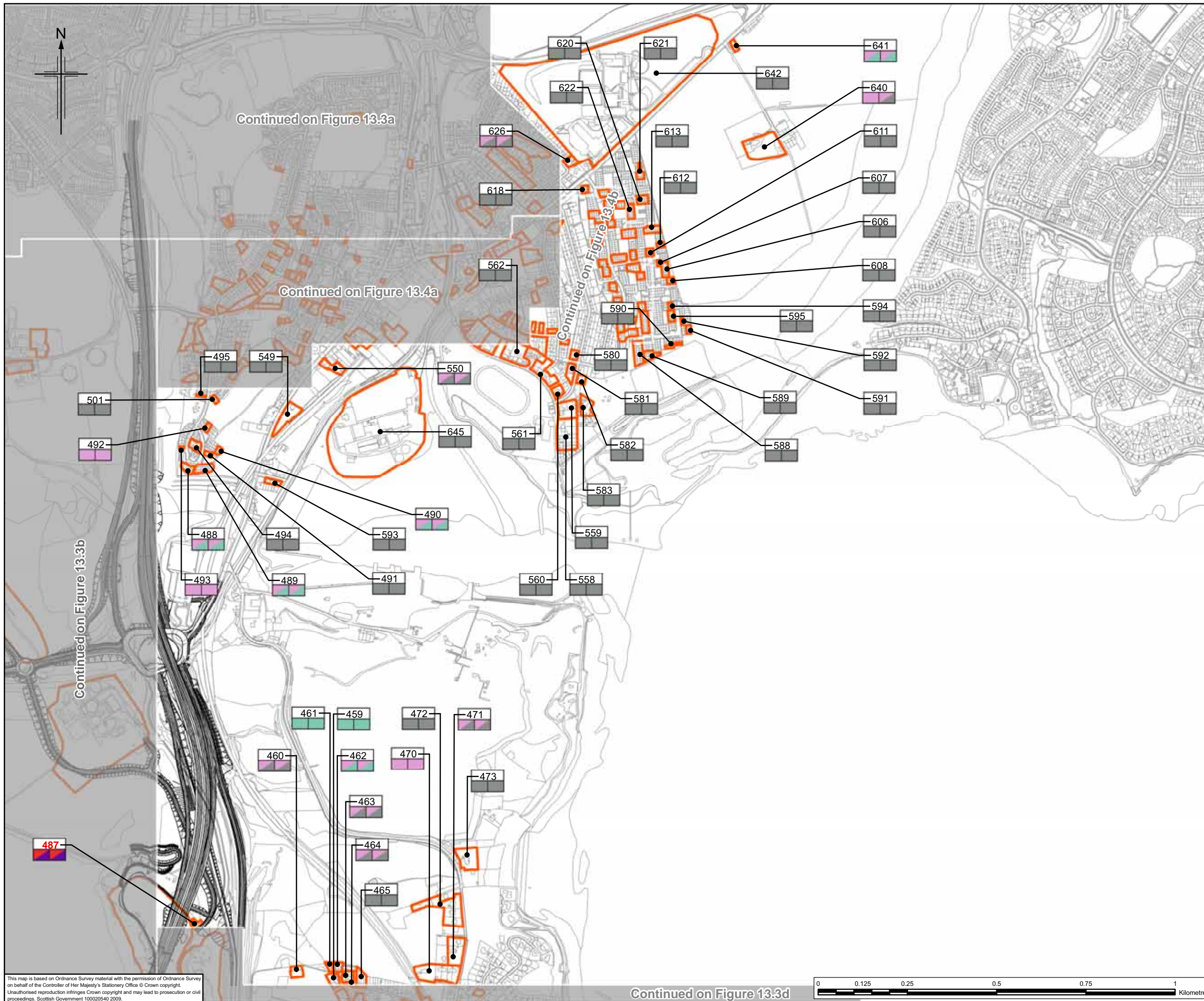
Scale: 1:10,000 @ A3 DO NOT SCALE

Client no. RD001675

Drawing number **FIGURE 13.3b** Rev 0

This map is based on Ordnance Survey material with the permission of Ordnance Survey on behalf of the Controller of Her Majesty's Stationery Office © Crown copyright. Unauthorised reproduction infringes Crown copyright and may lead to prosecution or civil proceedings. Scottish Government 100020540 2009.





Legend

- Proposed scheme (Stage 3 design)
- Built visual receptors
- a) a) Receptor number *
- b) b) Impact Winter Year of Opening
- c) c) Impact Summer 15 Years after Opening
- Severe adverse impact
- Substantial adverse impact
- Moderate adverse impact
- Slight adverse impact
- Negligible adverse impact
- Major neutral impact
- Substantial neutral impact
- Moderate neutral impact
- Slight neutral impact
- Negligible neutral impact
- Slight beneficial impact

* For the main crossing, impacts are generally considered to be neutral and represent a significance of change. Where visual impacts are considered to be adverse as a result of the proximity of the receptor to the bridge structure, receptor numbers are shown in red (123).

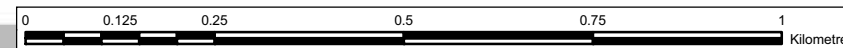


JACOBS ARUP

Project
**FORTH REPLACEMENT CROSSING
Environmental Statement**

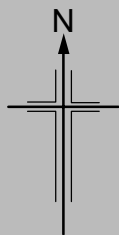
Drawing title
**Main Crossing: Visual
Impact on Built Receptors**

Drawing Status: FINAL
Scale: 1:10,000 @ A3 DO NOT SCALE
Client no.: RD001675
Drawing number: **FIGURE 13.3c** Rev 0



This map is based on Ordnance Survey material with the permission of Ordnance Survey on behalf of the Controller of Her Majesty's Stationery Office © Crown copyright. Unauthorised reproduction infringes Crown copyright and may lead to prosecution or civil proceedings. Scottish Government 100020540 2009.

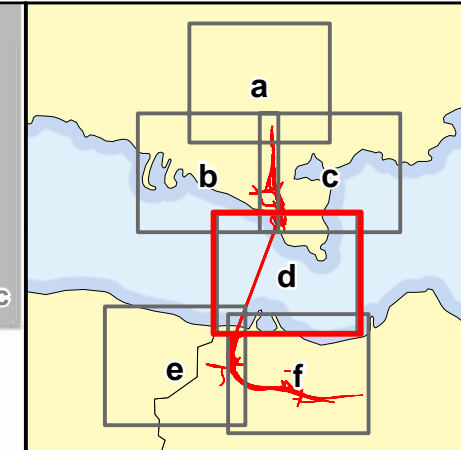
Continued on Figure 13.3d





Continued on Figure 13.3b












Continued on Figure 13.3c

Continued on Figure 13.4c



Legend

-  Proposed scheme (Stage 3 design)
-  Built visual receptors
- | | | |
|----|----|----|
| a) | b) | c) |
|----|----|----|

 a) Receptor number *
b) Impact Winter Year of Opening
c) Impact Summer 15 Years after Opening
-  Severe adverse impact
-  Substantial adverse impact
-  Moderate adverse impact
-  Slight adverse impact
-  Negligible adverse impact
-  Major neutral impact
-  Substantial neutral impact
-  Moderate neutral impact
-  Slight neutral impact
-  Negligible neutral impact
-  Slight beneficial impact

* For the main crossing, impacts are generally considered to be neutral and represent a significance of change. Where visual impacts are considered to be adverse as a result of the proximity of the receptor to the bridge structure, receptor numbers are shown in red (123).

This map is based on Ordnance Survey material with the permission of Ordnance Survey on behalf of the Controller of Her Majesty's Stationery Office © Crown copyright. Unauthorised reproduction infringes Crown copyright and may lead to prosecution or civil proceedings. Scottish Government 100020540 2009.

Client



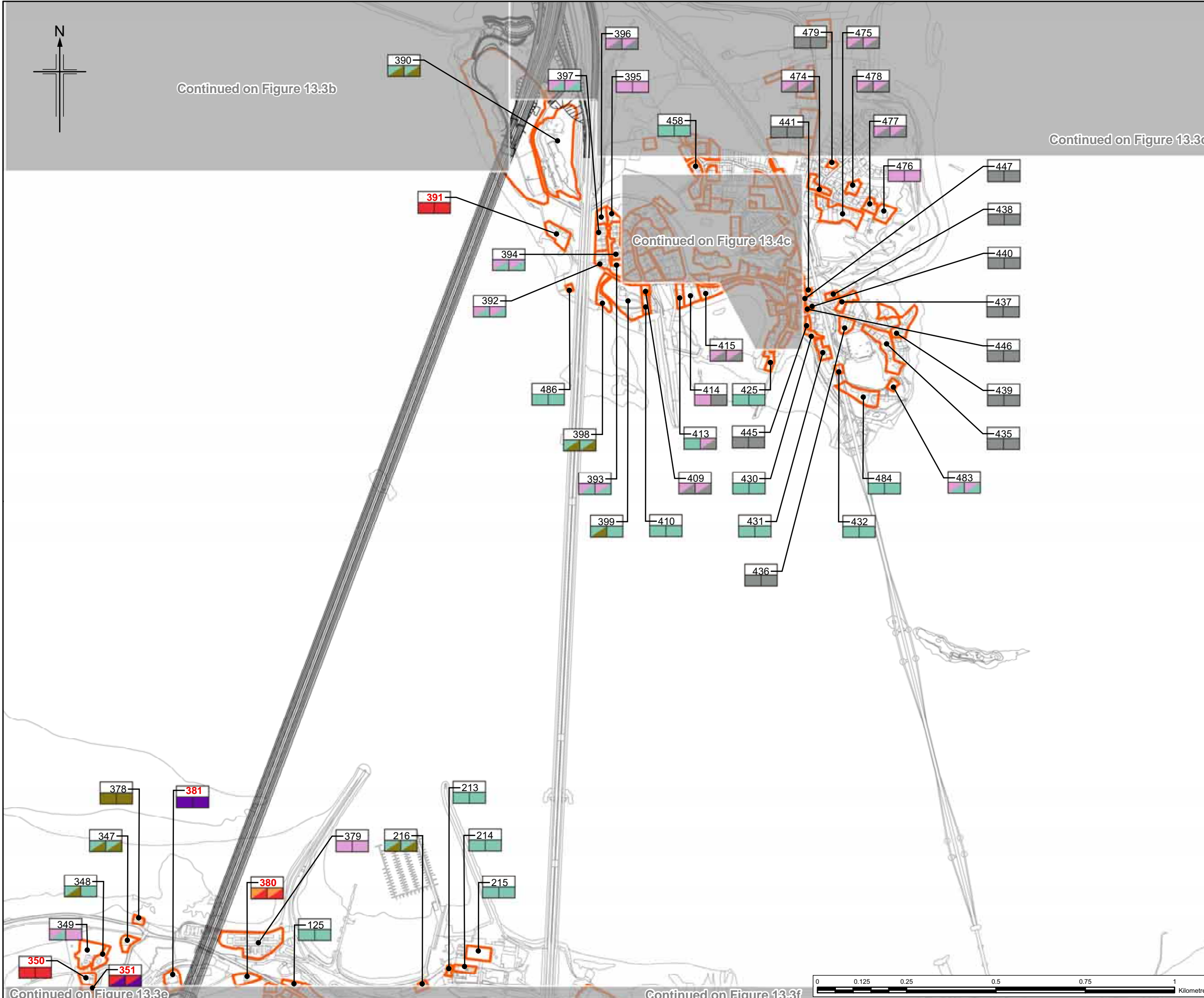
JACOBS ARUP

Project
FORTH REPLACEMENT CROSSING
Environmental Statement

Drawing title
Main Crossing: Visual Impact on Built Receptors

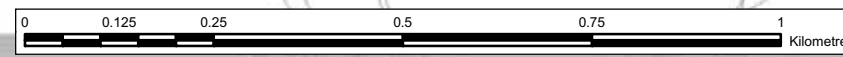
Drawing Status	FINAL	
Scale	1:10,000 @ A3	DO NOT SCALE
Client no.	RD001675	
Drawing number	FIGURE 13.3d	Rev 0

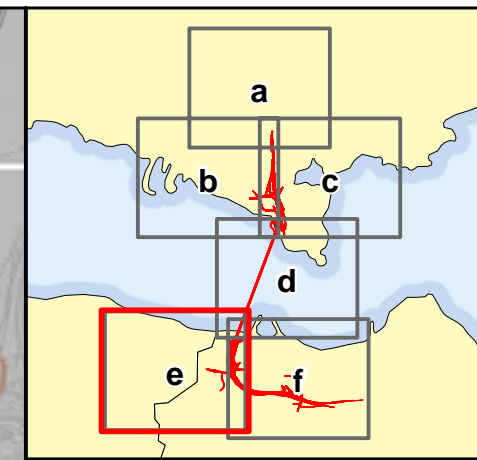
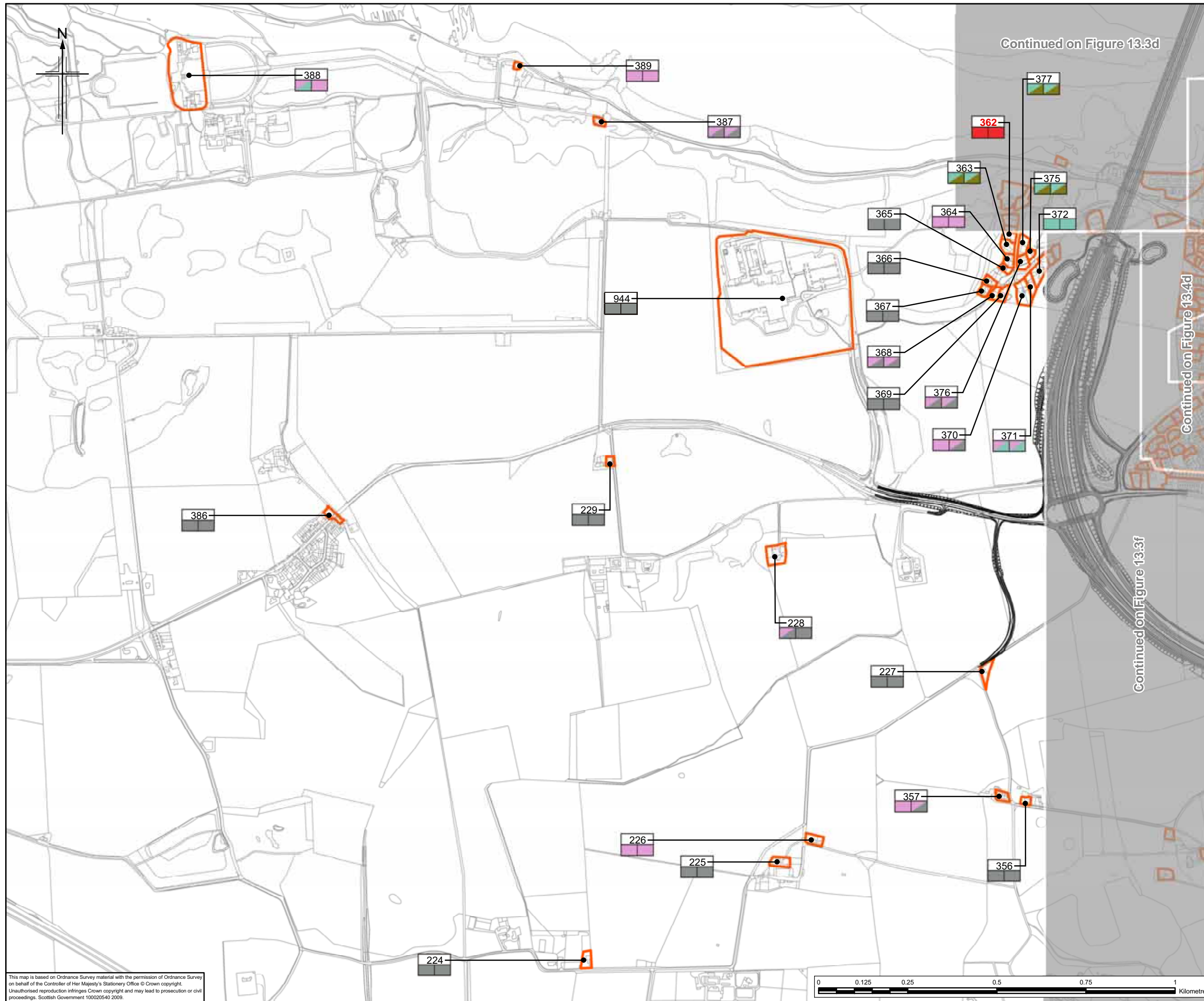
This drawing is not to be used in whole or part other than for the intended purpose and project as defined on this drawing. Refer to the contract for full terms and conditions.



Continued on Figure 13.3e

Continued on Figure 13.3f






Legend

- Proposed scheme (Stage 3 design)
- Built visual receptors
- a) a) Receptor number *
- b) b) Impact Winter Year of Opening
- c) c) Impact Summer 15 Years after Opening
- Severe adverse impact
- Substantial adverse impact
- Moderate adverse impact
- Slight adverse impact
- Negligible adverse impact
- Major neutral impact
- Substantial neutral impact
- Moderate neutral impact
- Slight neutral impact
- Negligible neutral impact
- Slight beneficial impact

* For the main crossing, impacts are generally considered to be neutral and represent a significance of change. Where visual impacts are considered to be adverse as a result of the proximity of the receptor to the bridge structure, receptor numbers are shown in red (123).

Client



TRANSPORT SCOTLAND
An agency of The Scottish Government

JACOBS ARUP

Project
**FORTH REPLACEMENT CROSSING
Environmental Statement**

Drawing title
**Main Crossing: Visual
Impact on Built Receptors**

Drawing Status: FINAL

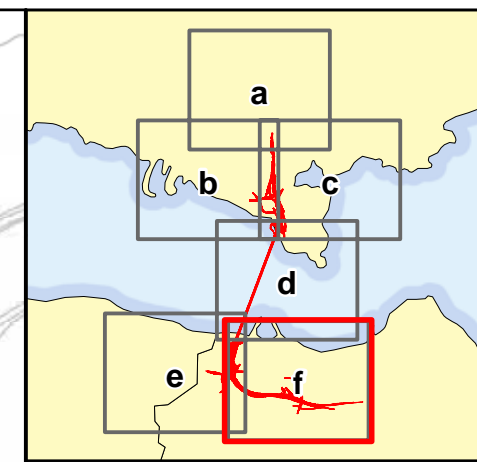
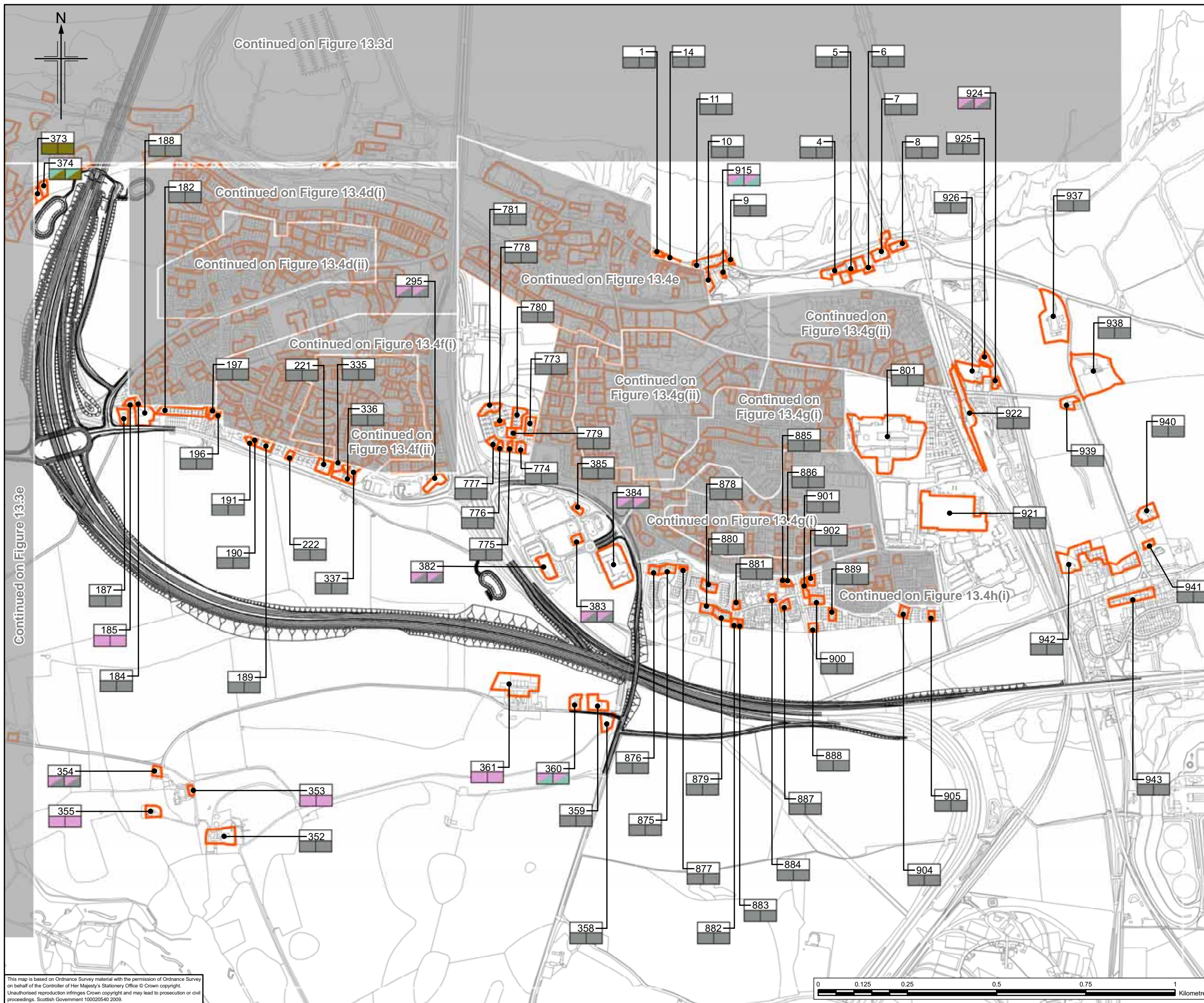
Scale: 1:10,000 @ A3 DO NOT SCALE

Client no. RD001675

Drawing number **FIGURE 13.3e** Rev 0

This drawing is not to be used in whole or part other than for the intended purpose and project as defined on this drawing. Refer to the contract for full terms and conditions.

This map is based on Ordnance Survey material with the permission of Ordnance Survey on behalf of the Controller of Her Majesty's Stationery Office © Crown copyright. Unauthorised reproduction infringes Crown copyright and may lead to prosecution or civil proceedings. Scottish Government 100020540 2009.



Legend

- Proposed scheme (Stage 3 design)
- Built visual receptors
- a) Receptor number *
- b) Impact Winter Year of Opening
- c) Impact Summer 15 Years after Opening
- Severe adverse impact
- Substantial adverse impact
- Moderate adverse impact
- Slight adverse impact
- Negligible adverse impact
- Major neutral impact
- Substantial neutral impact
- Moderate neutral impact
- Slight neutral impact
- Negligible neutral impact
- Slight beneficial impact

* For the main crossing, impacts are generally considered to be neutral and represent a significance of change. Where visual impacts are considered to be adverse as a result of the proximity of the receptor to the bridge structure, receptor numbers are shown in red (123).

Client

TRANSPORT SCOTLAND
An agency of The Scottish Government

JACOBS ARUP

Project
FORTH REPLACEMENT CROSSING

Drawing title
Main Crossing: Visual Impact on Built Receptors

Drawing Status: FINAL

Scale: 1:10,000 @ A3 DO NOT SCALE

Client no. RD001675

Drawing number **FIGURE 13.3f** Rev 0

This drawing is not to be used in whole or part other than for the intended purpose and project as defined on this drawing. Refer to the contract for full terms and conditions.

This map is based on Ordnance Survey material with the permission of Ordnance Survey on behalf of the Controller of Her Majesty's Stationery Office © Crown copyright. Unauthorised reproduction infringes Crown copyright and may lead to prosecution or civil proceedings. Scottish Government 100020540 2009.

