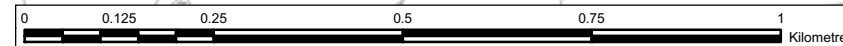


Legend

- Proposed scheme (Stage 3 design)
- Built visual receptors
- | |
|---------|
| a) |
| b) c) |

 a) Receptor number *
b) Impact Winter Year of Opening
c) Impact Summer 15 Years after Opening
- * Red number equates to adverse impact*
- Severe adverse impact
- Substantial adverse impact
- Moderate adverse impact
- Slight adverse impact
- Negligible adverse impact
- Major neutral impact
- Substantial neutral impact
- Moderate neutral impact
- Slight neutral impact
- Negligible neutral impact
- Slight beneficial impact

This map is based on Ordnance Survey material with the permission of Ordnance Survey on behalf of the Controller of Her Majesty's Stationery Office © Crown copyright. Unauthorised reproduction infringes Crown copyright and may lead to prosecution or civil proceedings. Scottish Government 100020540 2009.



Client

TRANSPORT SCOTLAND

An agency of The Scottish Government

JACOBS ARUP

Project
**FORTH REPLACEMENT CROSSING
Environmental Statement**

Drawing title
**Northern Route:
Visual Impact on Built Receptors**

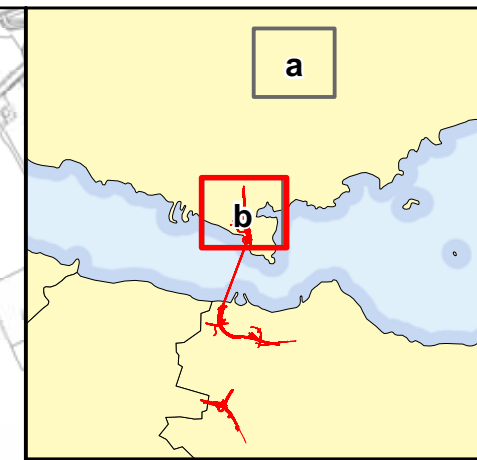
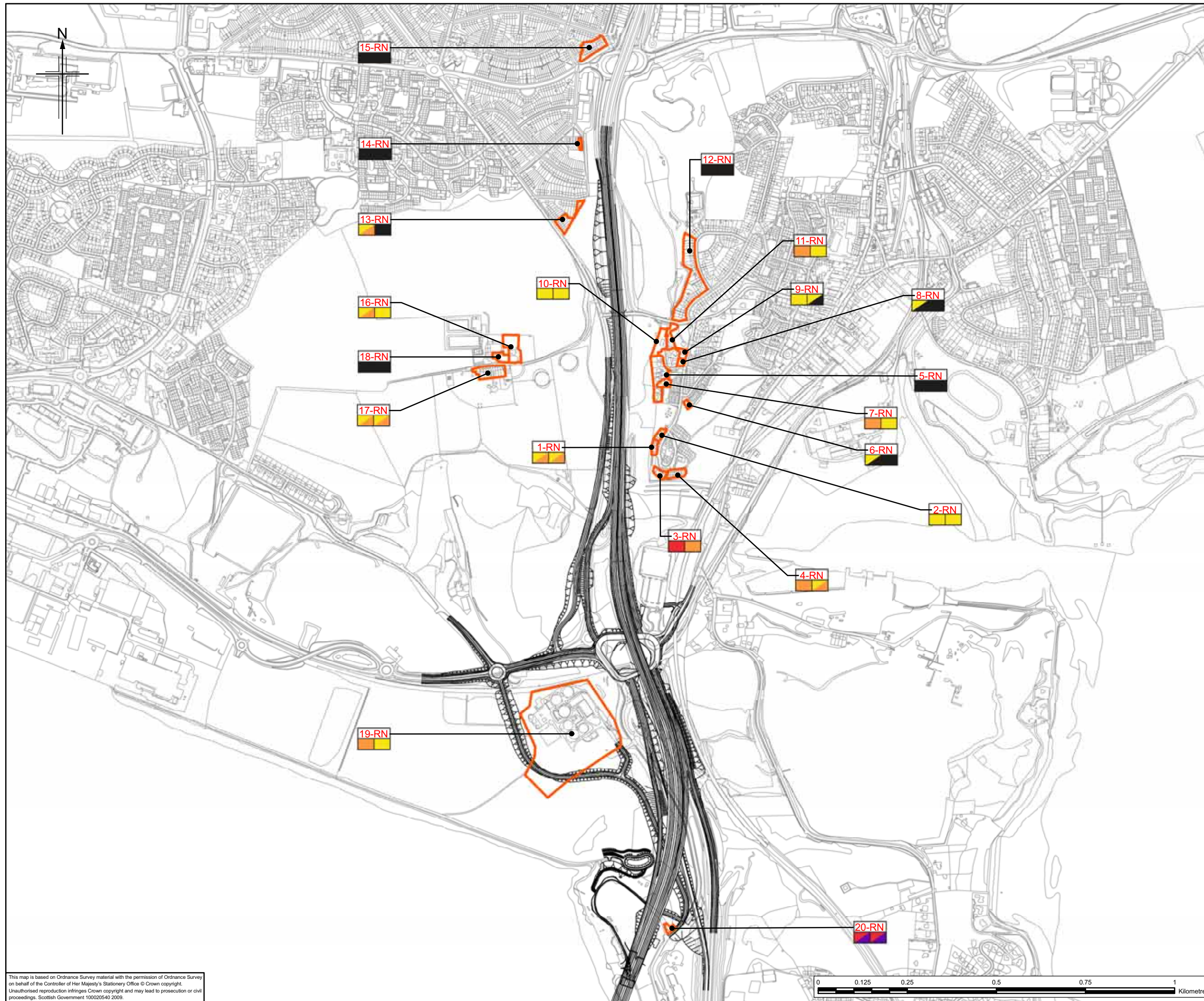
Drawing Status: **FINAL**

Scale: **1:10,000 @ A3 DO NOT SCALE**

Client no. **RD001675**

Drawing number **FIGURE 13.6a** Rev **0**

This drawing is not to be used in whole or part other than for the intended purpose and project as defined on this drawing. Refer to the contract for full terms and conditions.



Legend

- Proposed scheme (Stage 3 design)
- Built visual receptors

a)	a) Receptor number *
b)	b) Impact Winter Year of Opening
c)	c) Impact Summer 15 Years after Opening

* Red number equates to adverse impact

- Severe adverse impact
- Substantial adverse impact
- Moderate adverse impact
- Slight adverse impact
- Negligible adverse impact
- Major neutral impact
- Substantial neutral impact
- Moderate neutral impact
- Slight neutral impact
- Negligible neutral impact
- Slight beneficial impact

Client

TRANSPORT SCOTLAND

An agency of The Scottish Government

JACOBS ARUP

Project
FORTH REPLACEMENT CROSSING Environmental Statement

Drawing title
Northern Route:
Visual Impact on Built Receptors

Drawing Status: FINAL

Scale: 1:10,000 @ A3 DO NOT SCALE

Client no. RD001675

Drawing number **FIGURE 13.6b** Rev 0

This drawing is not to be used in whole or part other than for the intended purpose and project as defined on this drawing. Refer to the contract for full terms and conditions.

This map is based on Ordnance Survey material with the permission of Ordnance Survey on behalf of the Controller of Her Majesty's Stationery Office © Crown copyright. Unauthorised reproduction infringes Crown copyright and may lead to prosecution or civil proceedings. Scottish Government 100020540 2009.