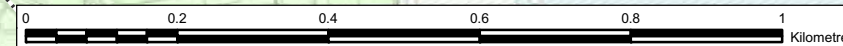


Legend

- Proposed scheme (Stage 3 design)
- Landscape**
- Adverse
- ▨ Neutral
- Visual**
- ▨ Adverse impact
- Land Use**
- ▨ Adverse impact
- Terrestrial and Freshwater Ecology**
- ▨ Adverse impact
- ▨ Beneficial impact
- Estuarine Ecology**
- ▨ Adverse impact
- Air Quality**
- Adverse impact
- Cultural Heritage**
- ▨ Adverse impact
- Noise**
- ▨ Adverse impact
- ▨ Beneficial impact
- Pedestrians**
- ▨ Adverse impact
- ▨ Beneficial impact
- Policies and Plans**
- ▨ Committed Development Locations
- 'Hotspot'

It should be noted that for the purposes of the Cumulative Impact Assessment, the illustrative areas shown for certain parameters relate to the extent of a receptor and not necessarily to the location of a specific impact. Examples include the entire landholding extent shown for land use impacts (for the landholding affected), and the full watercourse extent shown for ecology impacts (where used as commuting / foraging by otter).

This map is based on Ordnance Survey material with the permission of Ordnance Survey on behalf of the Controller of Her Majesty's Stationery Office © Crown copyright. Unauthorised reproduction infringes Crown copyright and may lead to prosecution or civil proceedings. Scottish Government 100020540 2009.



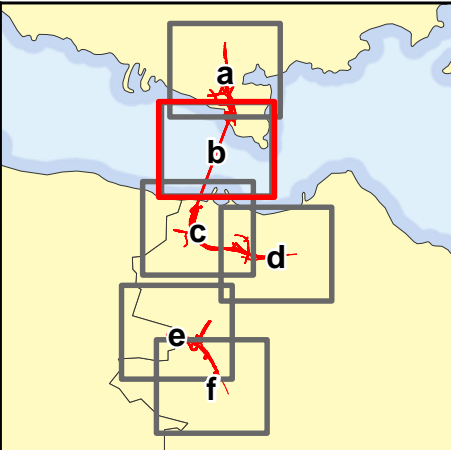
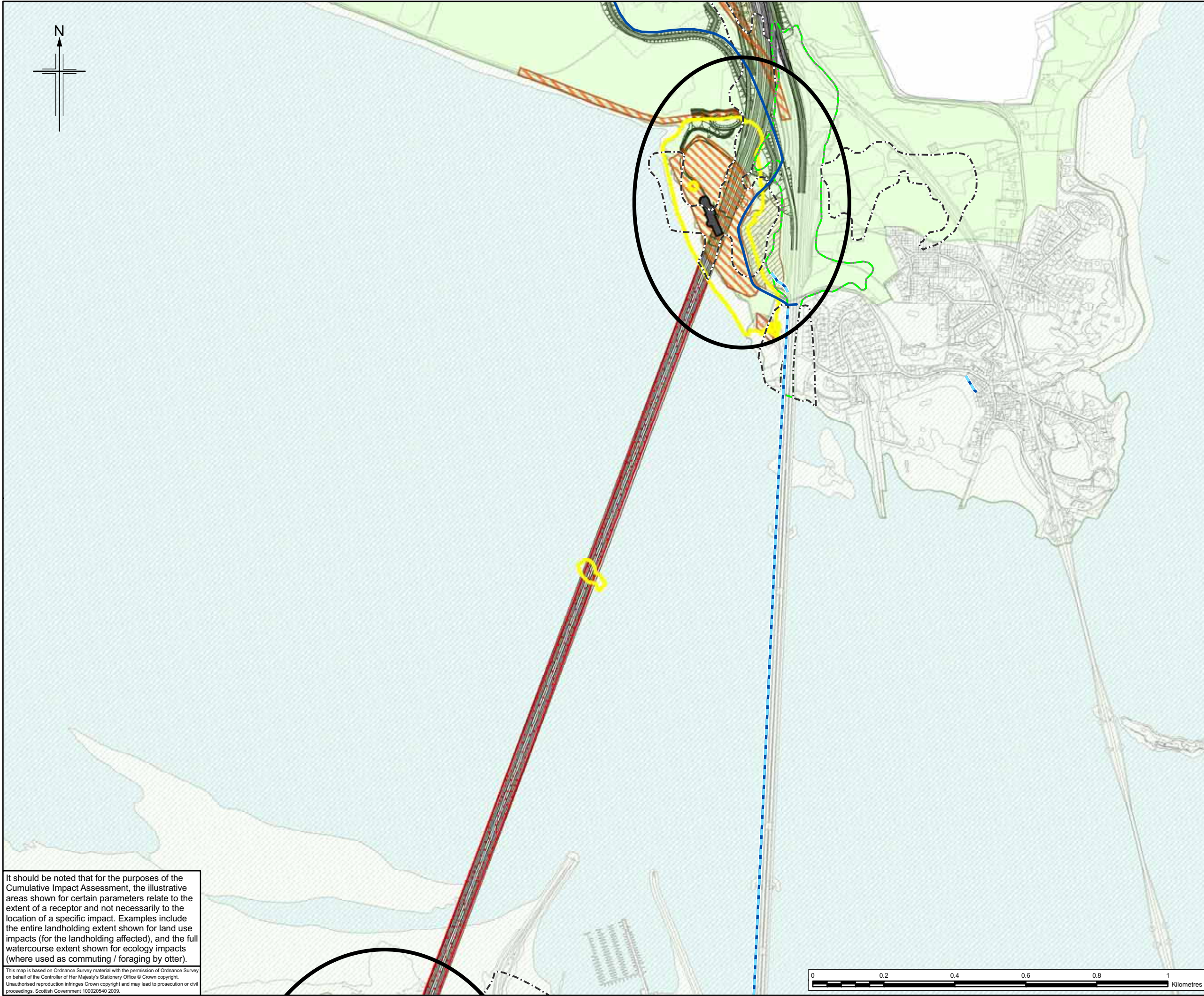
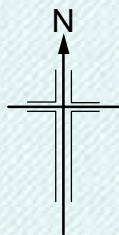
JACOBS ARUP

Project
**FORTH REPLACEMENT CROSSING
Environmental Statement**

Drawing title
**Residual Impacts Considered in the
Cumulative Impact Assessment**

Drawing Status	FINAL	
Scale	1:10,000 @ A3	DO NOT SCALE
Client no.	RD001675	
Drawing number	FIGURE 21.2a	Rev 0

This drawing is not to be used in whole or part other than for the intended purpose and project as defined on this drawing. Refer to the contract for full terms and conditions.



- Legend**
- Proposed scheme (Stage 3 design)
 - Landscape**
 - Adverse
 - Neutral
 - Visual**
 - Adverse impact
 - Land Use**
 - Adverse impact
 - Terrestrial and Freshwater Ecology**
 - Adverse impact
 - Beneficial impact
 - Estuarine Ecology**
 - Adverse impact
 - Air Quality**
 - Adverse impact
 - Cultural Heritage**
 - Adverse impact
 - Noise**
 - Adverse impact
 - Beneficial impact
 - Pedestrians**
 - Adverse impact
 - Beneficial impact
 - Policies and Plans**
 - Committed Development Locations
 - 'Hotspot'



JACOBS ARUP

Client
FORTH REPLACEMENT CROSSING Environmental Statement

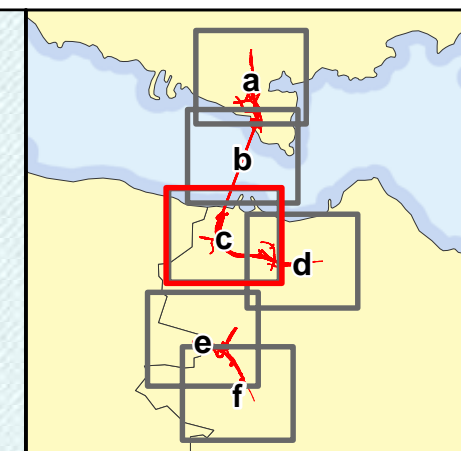
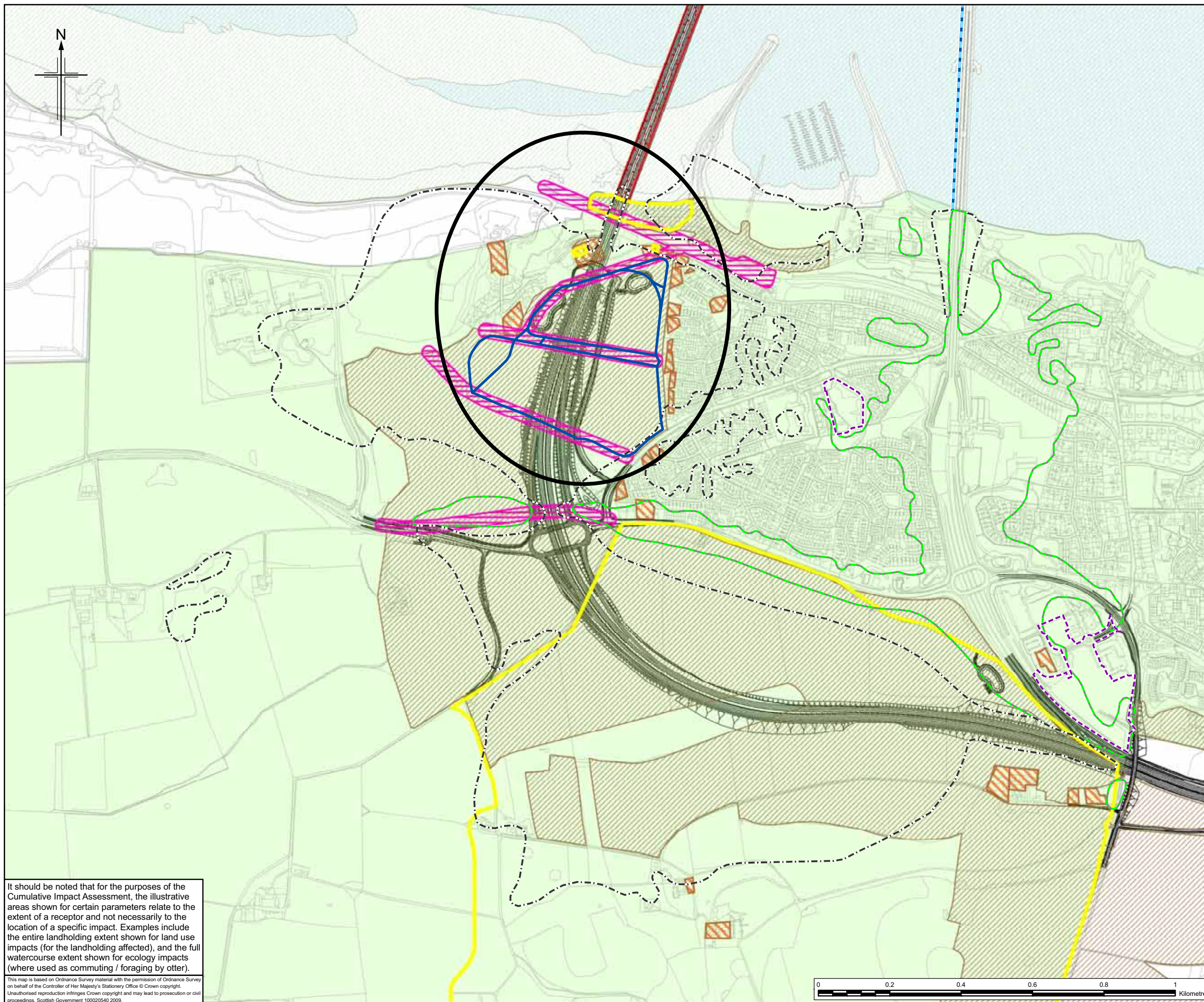
Drawing title
Residual Impacts Considered in the Cumulative Impact Assessment

Drawing Status	FINAL
Scale	1:10,000 @ A3 DO NOT SCALE
Client no.	RD001675
Drawing number	FIGURE 21.2b
Rev	0

It should be noted that for the purposes of the Cumulative Impact Assessment, the illustrative areas shown for certain parameters relate to the extent of a receptor and not necessarily to the location of a specific impact. Examples include the entire landholding extent shown for land use impacts (for the landholding affected), and the full watercourse extent shown for ecology impacts (where used as commuting / foraging by otter).

This map is based on Ordnance Survey material with the permission of Ordnance Survey on behalf of the Controller of Her Majesty's Stationery Office © Crown copyright. Unauthorised reproduction infringes Crown copyright and may lead to prosecution or civil proceedings. Scottish Government 100020540 2009.

This drawing is not to be used in whole or part other than for the intended purpose and project as defined on this drawing. Refer to the contract for full terms and conditions.



- Legend**
- Proposed scheme (Stage 3 design)
 - Landscape**
 - █ Adverse
 - ▨ Neutral
 - Visual**
 - ▨ Adverse impact
 - Land Use**
 - ▨ Adverse impact
 - Terrestrial and Freshwater Ecology**
 - ▨ Adverse impact
 - ▨ Beneficial impact
 - Estuarine Ecology**
 - █ Adverse impact
 - Air Quality**
 - █ Adverse impact
 - Cultural Heritage**
 - █ Adverse impact
 - Noise**
 - ▨ Adverse impact
 - ▨ Beneficial impact
 - Pedestrians**
 - █ Adverse impact
 - █ Beneficial impact
 - Policies and Plans**
 - ▨ Committed Development Locations
 - 'Hotspot'

It should be noted that for the purposes of the Cumulative Impact Assessment, the illustrative areas shown for certain parameters relate to the extent of a receptor and not necessarily to the location of a specific impact. Examples include the entire landholding extent shown for land use impacts (for the landholding affected), and the full watercourse extent shown for ecology impacts (where used as commuting / foraging by otter).

This map is based on Ordnance Survey material with the permission of Ordnance Survey on behalf of the Controller of Her Majesty's Stationery Office © Crown copyright. Unauthorised reproduction infringes Crown copyright and may lead to prosecution or civil proceedings. Scottish Government 100020540 2009.



JACOBS ARUP

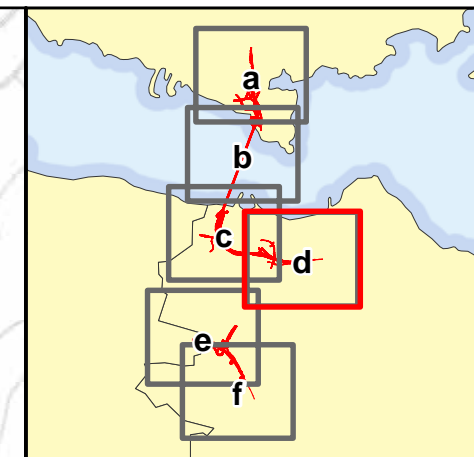
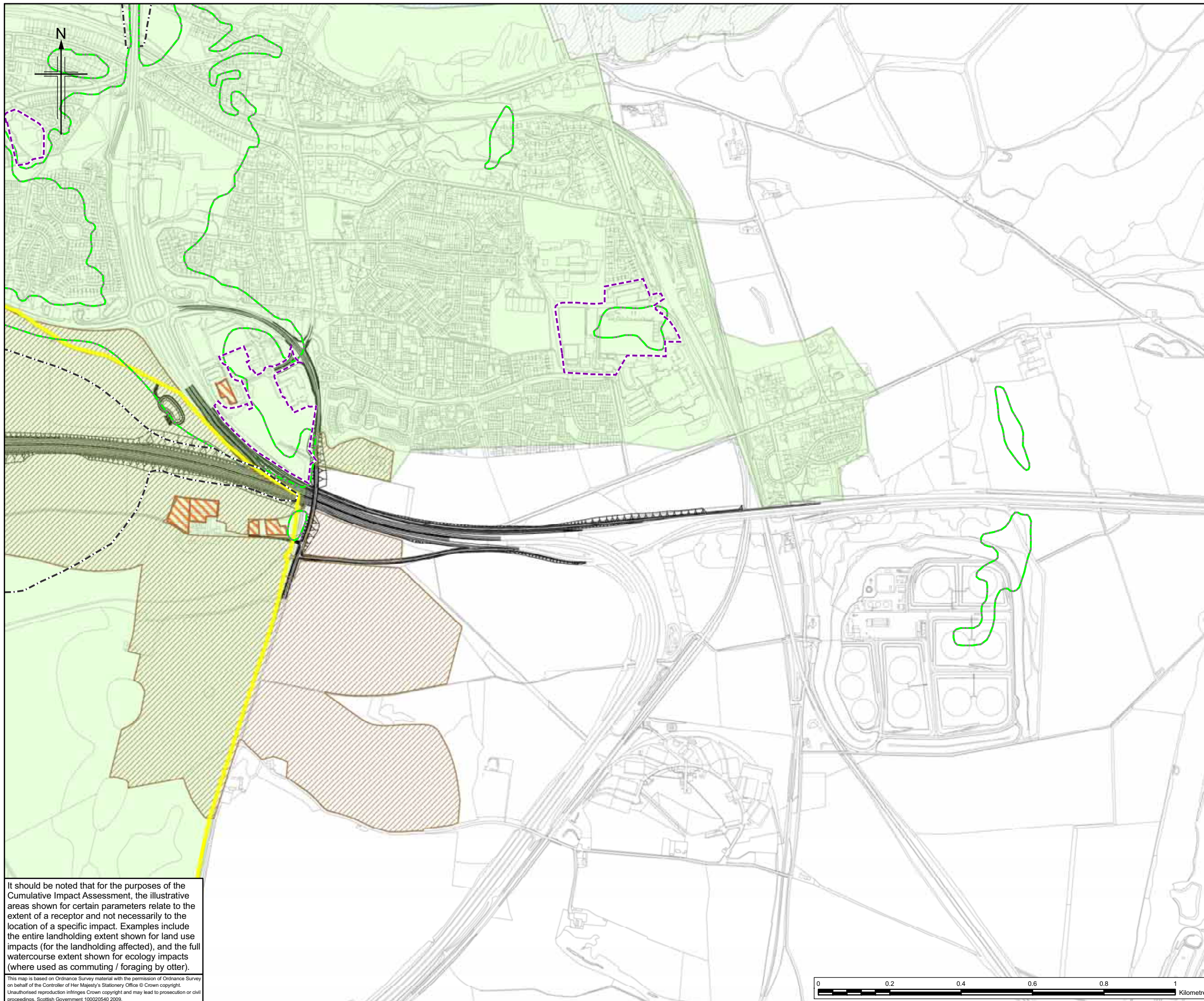
Client
FORTH REPLACEMENT CROSSING Environmental Statement

Drawing title
Residual Impacts Considered in the Cumulative Impact Assessment

Drawing Status: **FINAL**
 Scale: **1:10,000 @ A3 DO NOT SCALE**
 Client no.: **RD001675**

Drawing number: **FIGURE 21.2c** Rev **0**

This drawing is not to be used in whole or part other than for the intended purpose and project as defined on this drawing. Refer to the contract for full terms and conditions.



Legend

- Proposed scheme (Stage 3 design)
- Landscape**
 - █ Adverse
 - █ Neutral
- Visual**
 - █ Adverse impact
- Land Use**
 - █ Adverse impact
- Terrestrial and Freshwater Ecology**
 - █ Adverse impact
 - █ Beneficial impact
- Estuarine Ecology**
 - █ Adverse impact
- Air Quality**
 - █ Adverse impact
- Cultural Heritage**
 - █ Adverse impact
- Noise**
 - █ Adverse impact
 - █ Beneficial impact
- Pedestrians**
 - █ Adverse impact
 - █ Beneficial impact
- Policies and Plans**
 - █ Committed Development Locations
 - 'Hotspot'

It should be noted that for the purposes of the Cumulative Impact Assessment, the illustrative areas shown for certain parameters relate to the extent of a receptor and not necessarily to the location of a specific impact. Examples include the entire landholding extent shown for land use impacts (for the landholding affected), and the full watercourse extent shown for ecology impacts (where used as commuting / foraging by otter).

This map is based on Ordnance Survey material with the permission of Ordnance Survey on behalf of the Controller of Her Majesty's Stationery Office © Crown copyright. Unauthorised reproduction infringes Crown copyright and may lead to prosecution or civil proceedings. Scottish Government 100020540 2009.



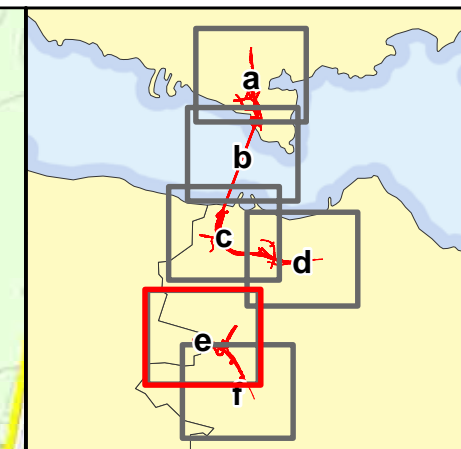
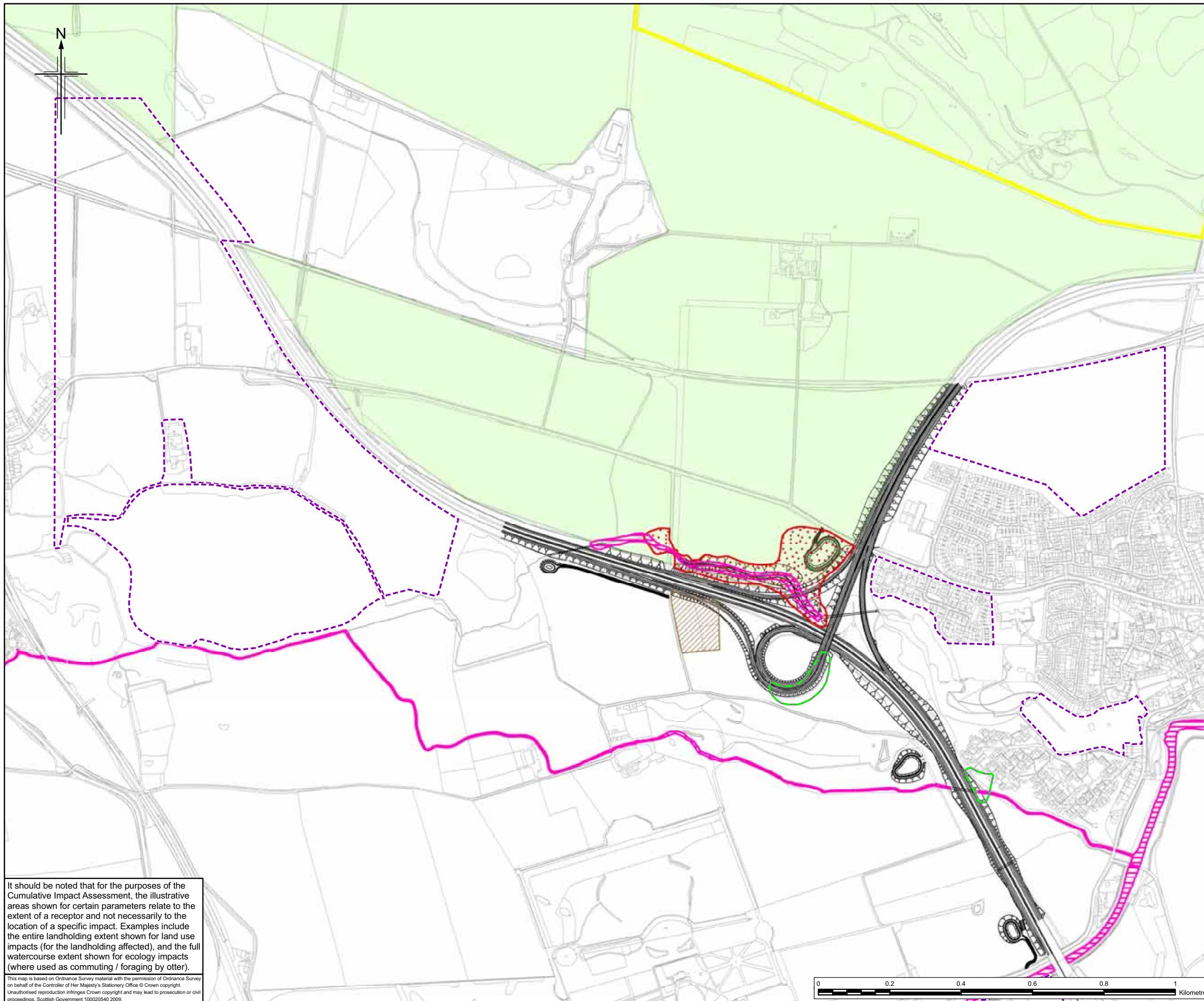
JACOBS ARUP

Project
**FORTH REPLACEMENT CROSSING
Environmental Statement**

Drawing title
**Residual Impacts Considered in the
Cumulative Impact Assessment**

Drawing Status: FINAL
Scale: 1:10,000 @ A3 DO NOT SCALE
Client no.: RD001675
Drawing number: **FIGURE 21.2d** Rev 0

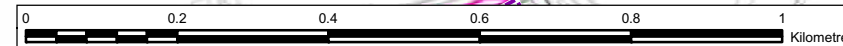
This drawing is not to be used in whole or part other than for the intended purpose and project as defined on this drawing. Refer to the contract for full terms and conditions.



- Legend**
- Proposed scheme (Stage 3 design)
 - Landscape**
 - Adverse
 - Neutral
 - Visual**
 - Adverse impact
 - Land Use**
 - Adverse impact
 - Terrestrial and Freshwater Ecology**
 - Adverse impact
 - Beneficial impact
 - Estuarine Ecology**
 - Adverse impact
 - Air Quality**
 - Adverse impact
 - Cultural Heritage**
 - Adverse impact
 - Noise**
 - Adverse impact
 - Beneficial impact
 - Pedestrians**
 - Adverse impact
 - Beneficial impact
 - Policies and Plans**
 - Committed Development Locations
 - 'Hotspot'

It should be noted that for the purposes of the Cumulative Impact Assessment, the illustrative areas shown for certain parameters relate to the extent of a receptor and not necessarily to the location of a specific impact. Examples include the entire landholding extent shown for land use impacts (for the landholding affected), and the full watercourse extent shown for ecology impacts (where used as commuting / foraging by otter).

This map is based on Ordnance Survey material with the permission of Ordnance Survey on behalf of the Controller of Her Majesty's Stationery Office © Crown copyright. Unauthorised reproduction infringes Crown copyright and may lead to prosecution or civil proceedings. Scottish Government 100020540 2009.



JACOBS ARUP

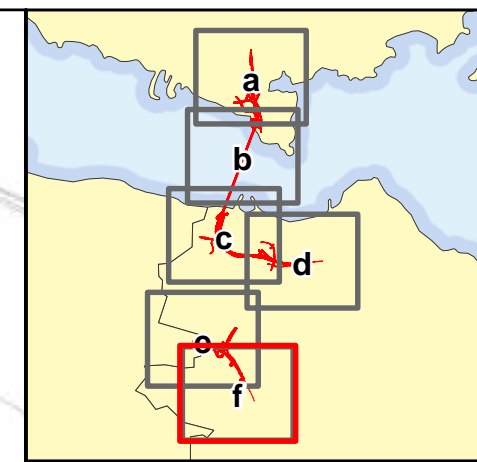
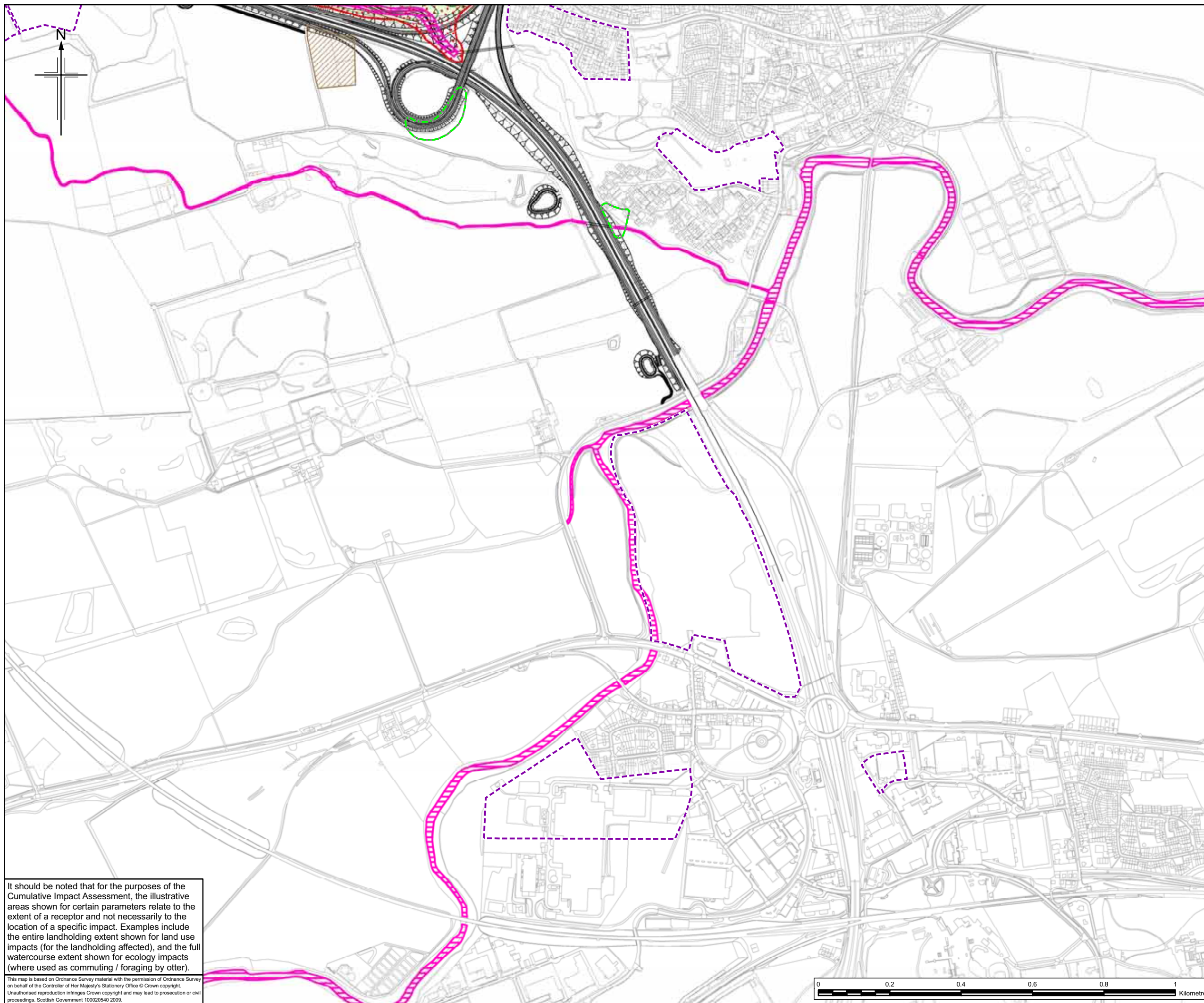
Project
FORTH REPLACEMENT CROSSING Environmental Statement

Drawing title
Residual Impacts Considered in the Cumulative Impact Assessment

Drawing Status: FINAL
Scale: 1:10,000 @ A3 DO NOT SCALE
Client no.: RD001675

Drawing number: **FIGURE 21.2e** Rev 0

This drawing is not to be used in whole or part other than for the intended purpose and project as defined on this drawing. Refer to the contract for full terms and conditions.



Legend

— Proposed scheme (Stage 3 design)

Landscape

- Adverse
- Neutral

Visual

- Adverse impact

Land Use

- Adverse impact

Terrestrial and Freshwater Ecology

- Adverse impact
- Beneficial impact

Estuarine Ecology

- Adverse impact

Air Quality

- Adverse impact

Cultural Heritage

- Adverse impact

Noise

- Adverse impact
- Beneficial impact

Pedestrians

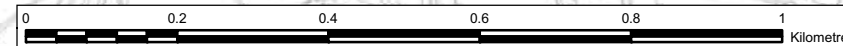
- Adverse impact
- Beneficial impact

Policies and Plans


- Committed Development Locations
- 'Hotspot'

It should be noted that for the purposes of the Cumulative Impact Assessment, the illustrative areas shown for certain parameters relate to the extent of a receptor and not necessarily to the location of a specific impact. Examples include the entire landholding extent shown for land use impacts (for the landholding affected), and the full watercourse extent shown for ecology impacts (where used as commuting / foraging by otter).

This map is based on Ordnance Survey material with the permission of Ordnance Survey on behalf of the Controller of Her Majesty's Stationery Office © Crown copyright. Unauthorised reproduction infringes Crown copyright and may lead to prosecution or civil proceedings. Scottish Government 100020540 2009.




Client



TRANSPORT SCOTLAND

An agency of The Scottish Government



JACOBS ARUP

Project
FORTH REPLACEMENT CROSSING Environmental Statement

Drawing title
Residual Impacts Considered in the Cumulative Impact Assessment

Drawing Status: FINAL

Scale: 1:10,000 @ A3 DO NOT SCALE

Client no.: RD001675

Drawing number: **FIGURE 21.2f** Rev 0

This drawing is not to be used in whole or part other than for the intended purpose and project as defined on this drawing. Refer to the contract for full terms and conditions.